

SUMMARY

PIERS collects import/export data from Bills of Lading for all waterborne cargo vessels that enter or exit U.S. ports. This data is analyzed and augmented with supplementary datasets to produce the PIERS trade intelligence data resources. PIERS provides comprehensive trade data that contains detailed information on commodity description, tonnage shipped, TEUs, estimated value, and import/export companies profiles. It also provides historical records dating from 1950. PIERS data can be used for multiple purposes including market share and trend analysis by different users such as manufacturing industries or government agencies.

MORE ABOUT THE DATA

Developer: JOC Group (IHS Inc.)

Update Frequency: Daily

Latest Year Available: 2016

Temporal Coverage: Annual

Geographical Coverage: National & Worldwide

Geographical Resolution: Major U.S. Ports

Modal Coverage: Maritime (Water)

Data Format: MS Excel, PDF
Automated platform (Dashboards, Online Queries)

Licensing Agreement: Subscription agreement required

Acquisition Cost: Variable

Contact:

[FDOT Seaports and Waterways Office](#)

(850) 414-4527

[FDOT TRANSTAT](#)

(850) 414-4848

CURRENT APPLICATIONS

- » State Seaport and Waterways Office
 - » Florida Seaport System Plan, 2015
 - » Florida Seaport System Plan, 2010
 - » Office Research and Statistical Analysis, Ongoing
- » Florida Ports Council and Individual Florida Ports
 - » Five-year Florida Seaport Mission Plan, Annual
 - » Analysis of Global Opportunities and Challenges for Florida Seaports, 2013
- » Florida Chamber Foundation
 - » Florida Trade and Logistics Study 2.0, 2012
 - » Florida Trade and Logistics Study, 2010
- » TRANSTAT
 - » Florida Statewide Freight Model (FreightSIM), 2015
 - » Reducing Traffic Congestion in South Florida, 2008

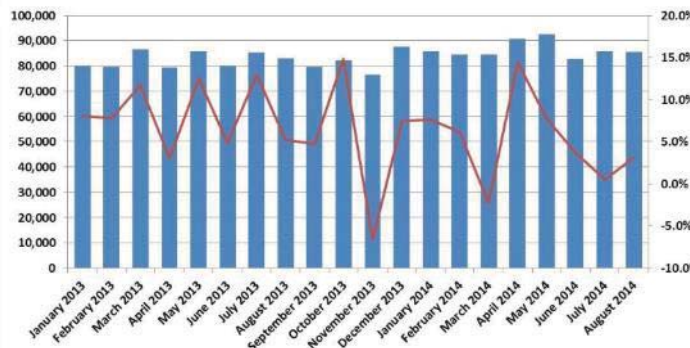
POTENTIAL APPLICATIONS

- » Economic Development Planning
- » Modal Shift Analysis
- » Environmental Planning
- » Intermodal Trade Corridor Planning
- » Freight Mobility Planning
- » Operations/Services
- » Terminal and Border Access Planning
- » Sustainable Transportation Investment
- » Land Use Planning
- » Congestion Management

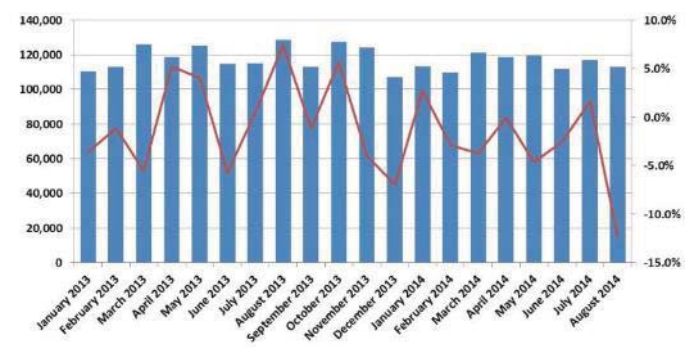
Port Everglades Import Commodity Flows, 2013



Import Volume in TEUs



Export Volume in TEUs



Source: Florida Seaports Market Trends: Extracting Intelligence From Trade Data, 2014

Complexity Measure	Spatial Coverage	Commodity Coverage	Industry Coverage	Modal Coverage	Temporal Coverage	Collection Frequency/update	Accuracy	Access	Usability
Rating	●	●	●	◐	●	◐	●	◐	●

