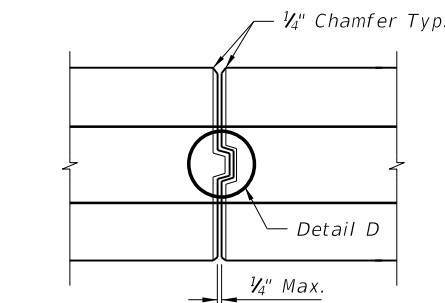
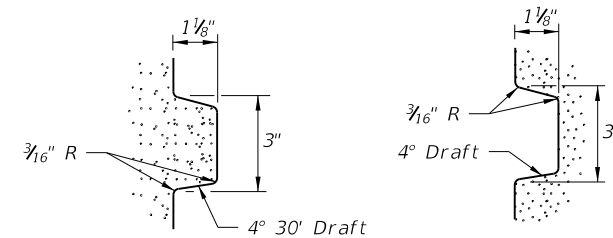


DOWELED TRANSVERSE CONSTRUCTION JOINT WHEN ABUTTING SEGMENT(S) LESS THAN 40' IN LENGTH

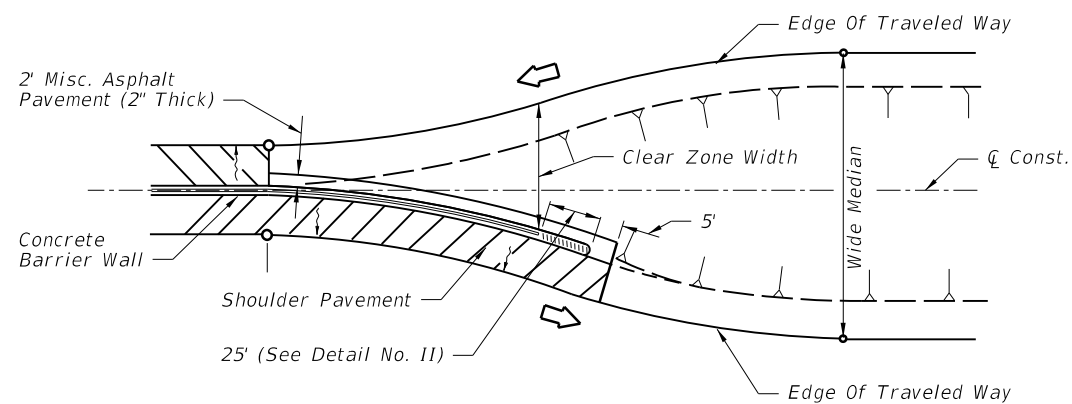
DETAIL B



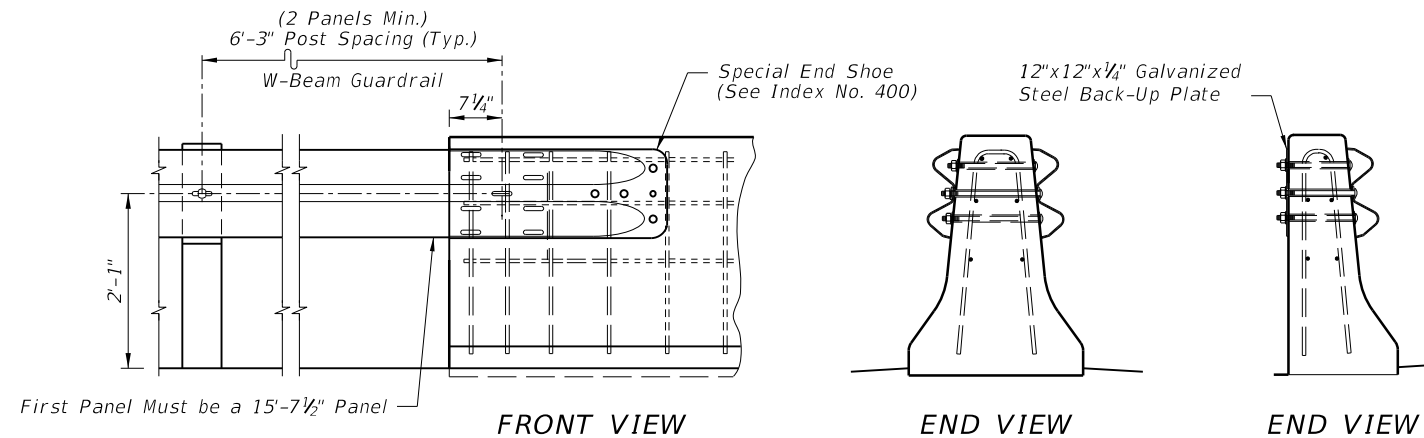
TOP VIEW  
PRECAST BARRIER TRANSVERSE JOINTS  
DETAIL C



TOP VIEW  
STRAIGHT TONGUE AND GROOVE  
DETAIL D



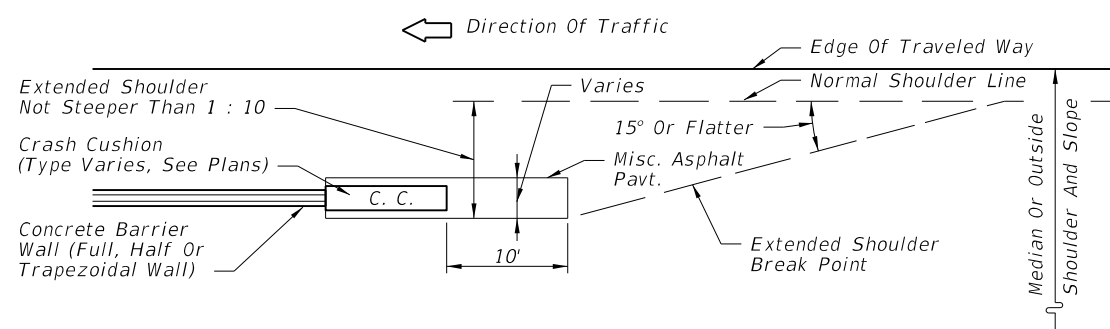
CONCRETE BARRIER WALL TRANSITION BETWEEN WIDE AND NARROW MEDIANS WHEN BARRIER WALL END LOCATED OUTSIDE APPROACH CLEAR ZONE OR HORIZONTAL CLEARANCE



NOTES

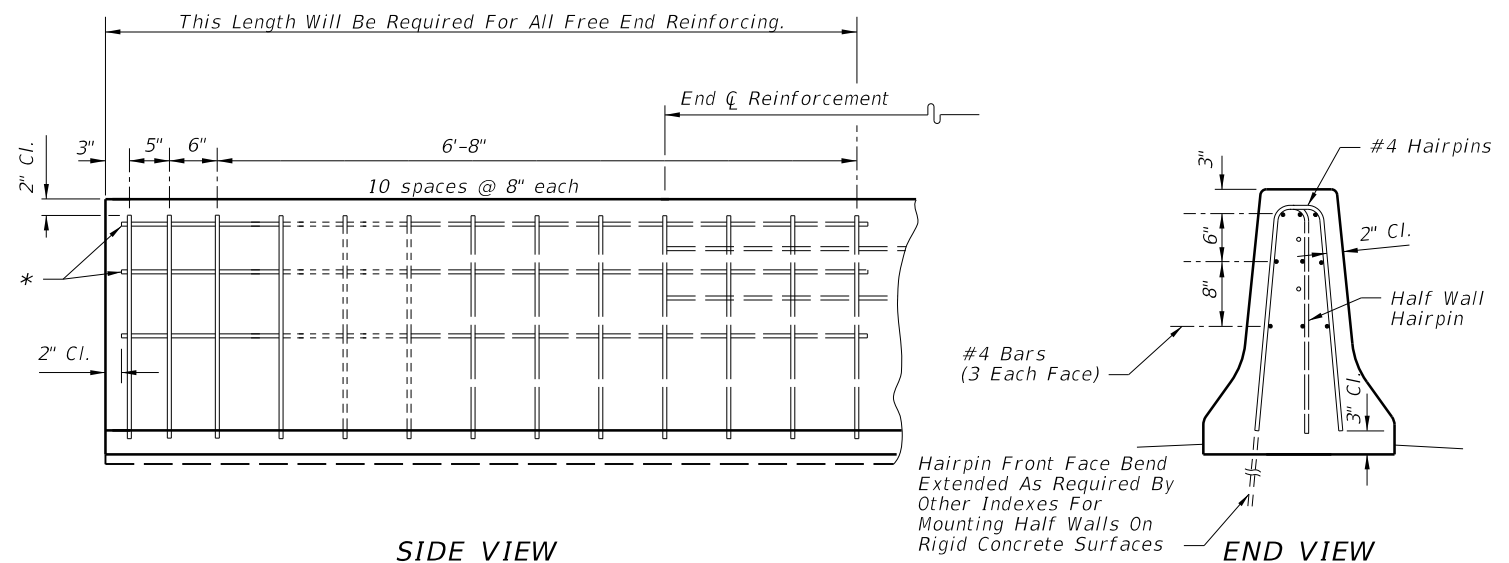
- End of wall flush mounted connections are not applicable to two-lane two-way facilities. See Sheets 20, 24, and 25 for trailing end connections on two-lane two-way facilities and for approach guardrail connections.
- Trailing guardrail connections to double face safety shaped walls will be under one of the following traffic conditions and mounting methods:
  - One-way traffic trailing condition one side only - flush mount with flat steel back-up plate on back side.
  - One-way traffic trailing condition both sides - flush mount both sides.
  - For trailing condition one side and approach traffic condition opposite side - see "Median Barrier Wall" mounting, Sheet 25.

W-BEAM GUARDRAIL CONNECTION TO CONCRETE BARRIER WALL TRAILING ENDS



SHOULDER TREATMENT WHEN CRASH CUSHIONS SHIELDING CONCRETE BARRIER WALL END LOCATED INSIDE APPROACH CLEAR ZONE OR HORIZONTAL CLEARANCE

DETAIL A



SIDE VIEW

FREE END REINFORCEMENT

\* Note: Free end reinforcement required for nonreinforced walls at the following locations: All exposed ends; abutting ends of true joints; ends with guardrail connections; ends with redirective crash cushion connections; and, ends connecting to bridge traffic rails or other rigid barrier walls.

3/4/2014 8:34:02 AM KJACMP C:\projects\standards\roadway\0400-sv\ev\00410-02of27-REV.dgn

LAST REVISION 07/01/13	DESCRIPTION: Revised W-beam Mounting Height to 2' 1" and post spacing.	 FDOT 2014 DESIGN STANDARDS	CONCRETE BARRIER WALL	INDEX NO. 410	SHEET NO. 2 of 27
---------------------------	---	--	-----------------------	------------------	----------------------