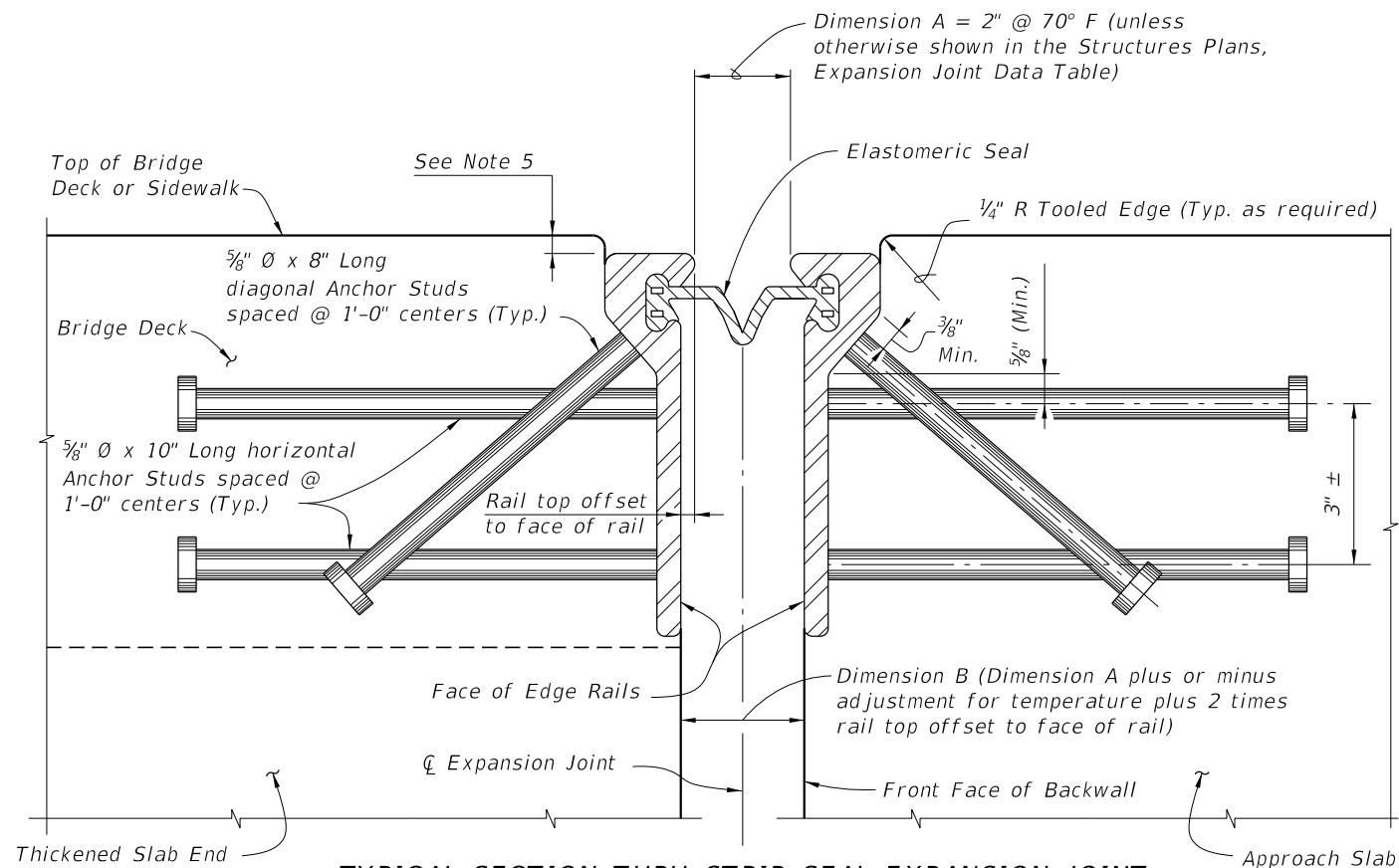
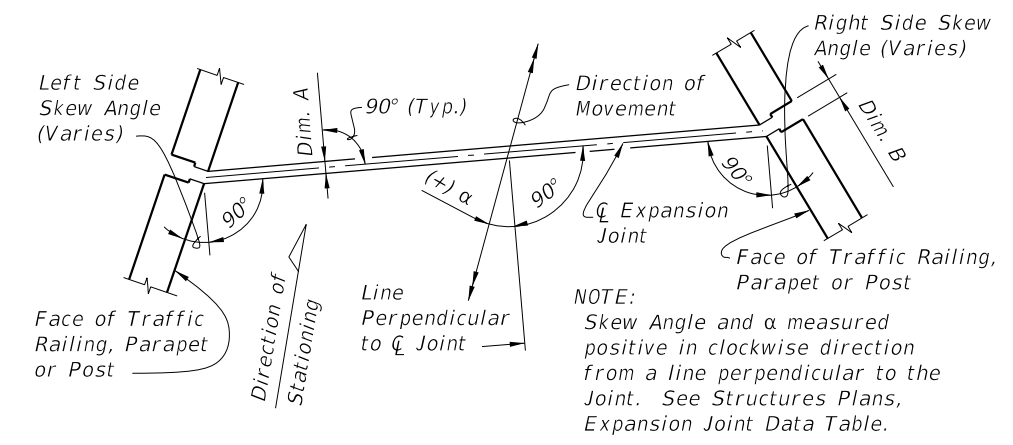


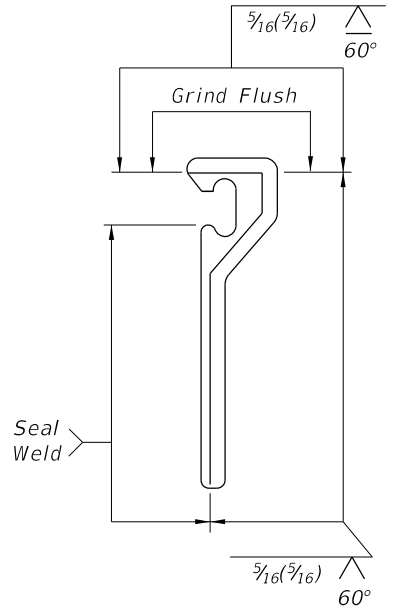
12/30/2011 11:51:17 AM rd960rh C:\projects\standards\structures\current\read\4release\2012book\_draft\21100-1of3.dgn



**TYPICAL SECTION THRU STRIP SEAL EXPANSION JOINT**  
 (Begin or End Concrete Girder Bridge shown, Intermediate Supports and Steel Girder Bridge similar. Reinforcing Steel and Girder details not shown for clarity.)



**MOVEMENT SCHEMATIC**



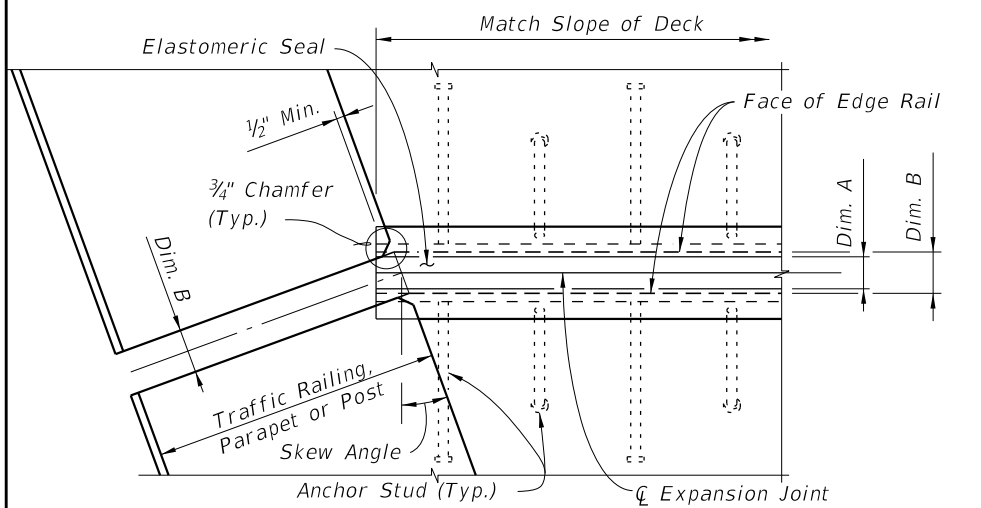
**SHOP SPLICE DETAIL**

**GENERAL NOTES:**

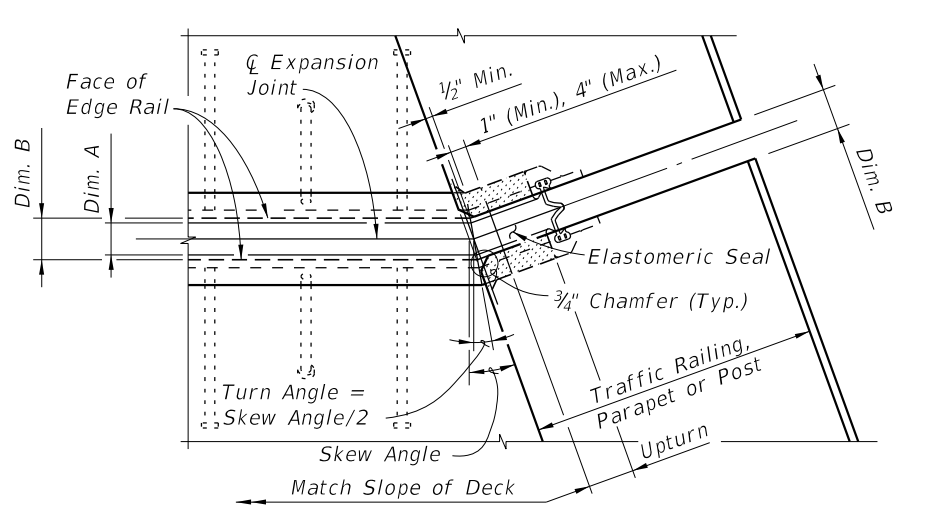
1. Furnish Strip Seal Expansion Joint Systems in accordance with Specification Section 458.
2. Shape of Edge Rail shown is representative, minor variations depending on manufacturer are permitted.
3. Recess the Edge Rail below the concrete surface in accordance with Specification Section 458.
4. Refer to Specification 458 and the Expansion Joint Data Table in the Structures Plans for installation and fabrication requirements and adjustments to Dimension A.

LAST REVISION	01/01/12	DESCRIPTION:		<b>FDOT DESIGN STANDARDS</b> FY 2012/2013	<b>STRIP SEAL EXPANSION JOINT</b>	INDEX NO.	21100	SHEET NO.	1
---------------	----------	--------------	--	--	-----------------------------------	-----------	-------	-----------	---

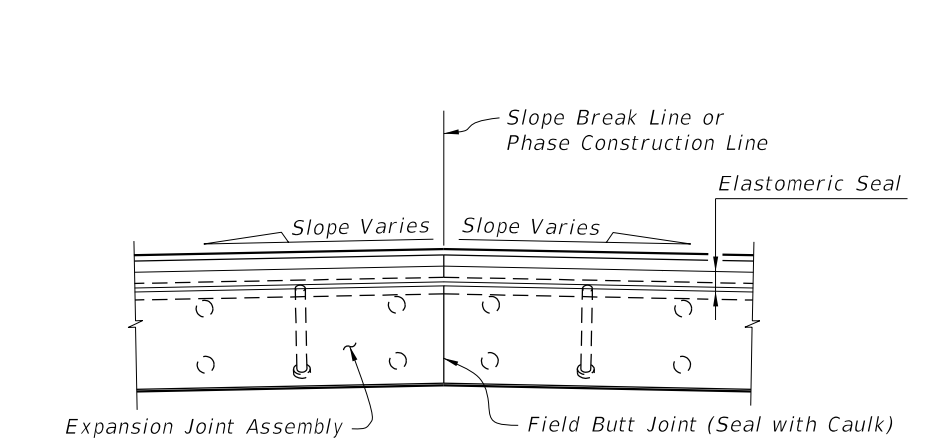
12/30/2011 11:51:18 AM rd960rh C:\projects\standards\structures\current\ready\4release\_2012\book\_draft\21100-2of3.dgn



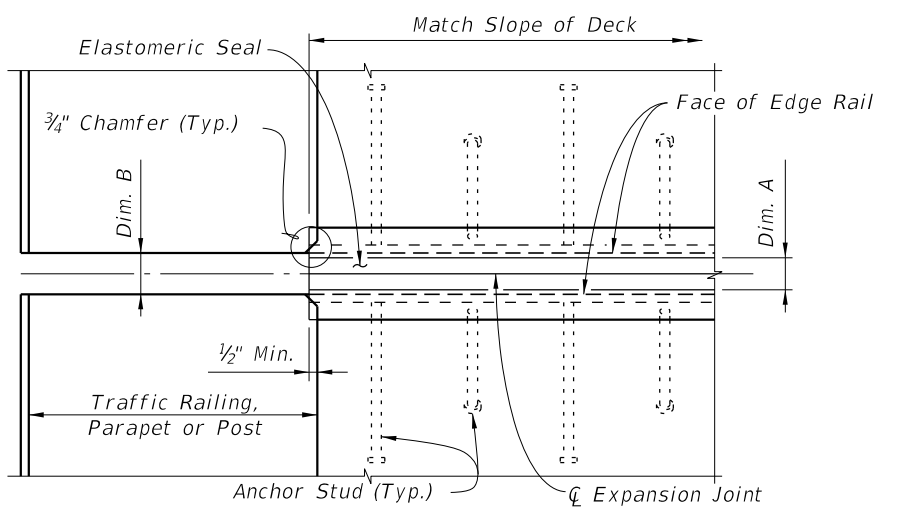
**PARTIAL PLAN VIEW OF SKEWED JOINTS**



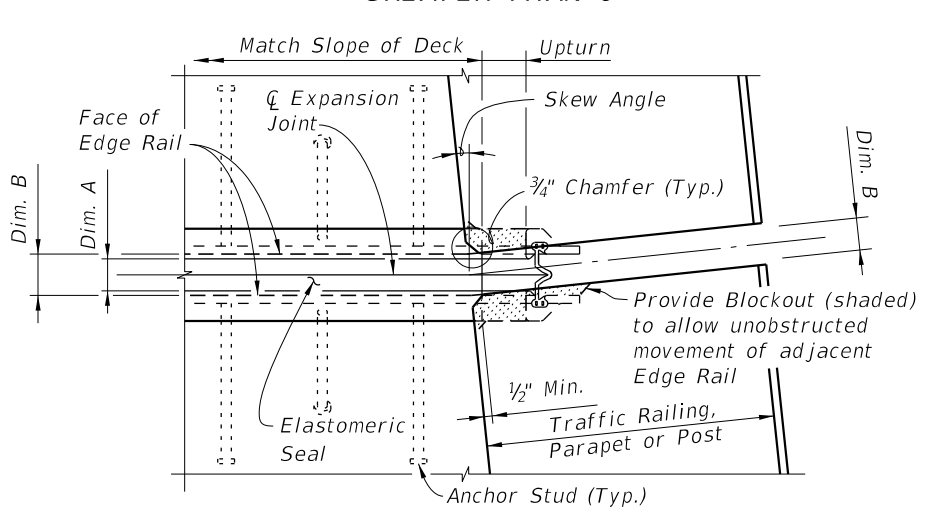
**PARTIAL PLAN VIEW OF JOINTS SKEWED GREATER THAN 6°**



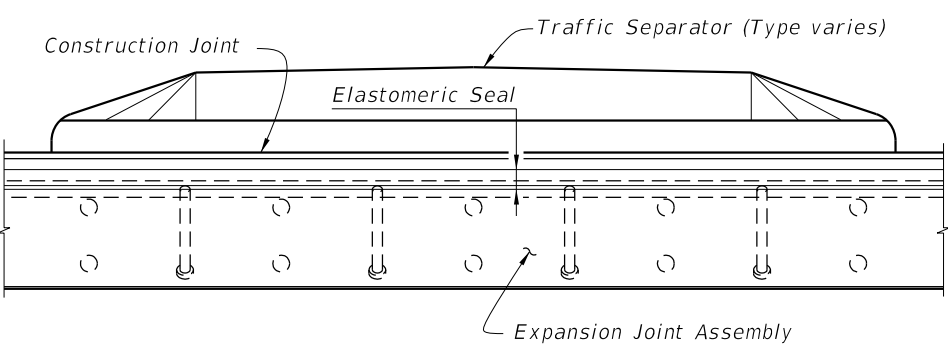
**PARTIAL SECTION ALONG Q JOINT AT FIELD BUTT JOINT LOCATION (CROWNED DECK OR SLAB SHOWN)**



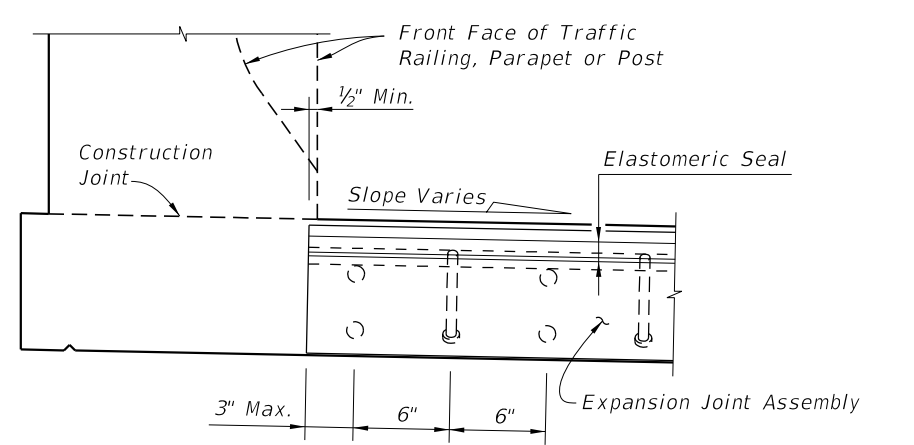
**PARTIAL PLAN VIEW OF NONSKEWED JOINTS**



**PARTIAL PLAN VIEW OF NONSKEWED JOINTS & JOINTS SKEWED 6° OR LESS**

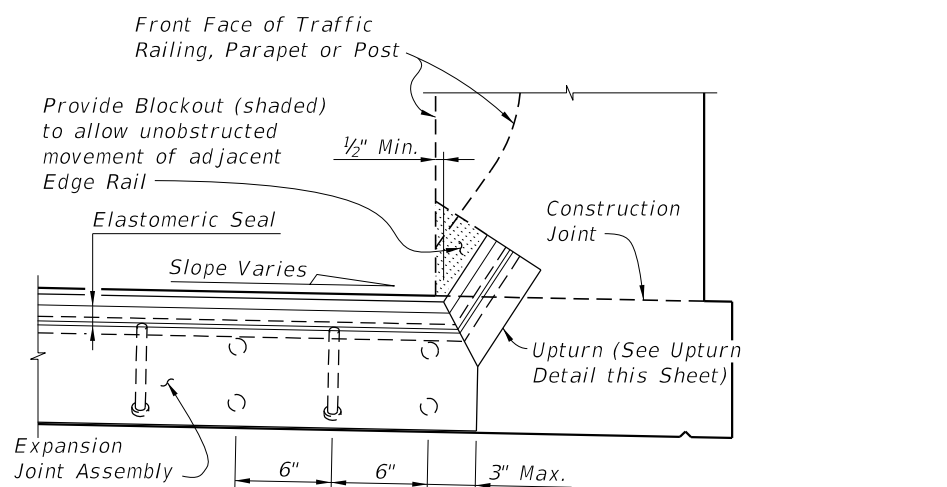


**PARTIAL SECTION ALONG Q JOINT THRU TRAFFIC SEPARATOR**



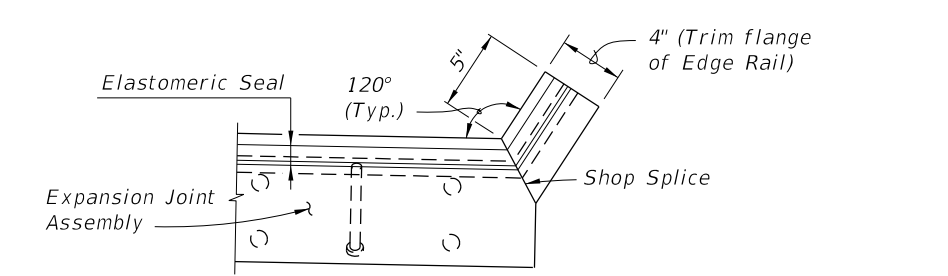
**PARTIAL SECTION ALONG Q JOINT**

**JOINT TREATMENT AT HIGH SIDE OF DECK WITH SLOPE ≥ 2%**  
 (Sidewalk Cover Plate where applicable not shown for clarity)



**PARTIAL SECTION ALONG Q JOINT**

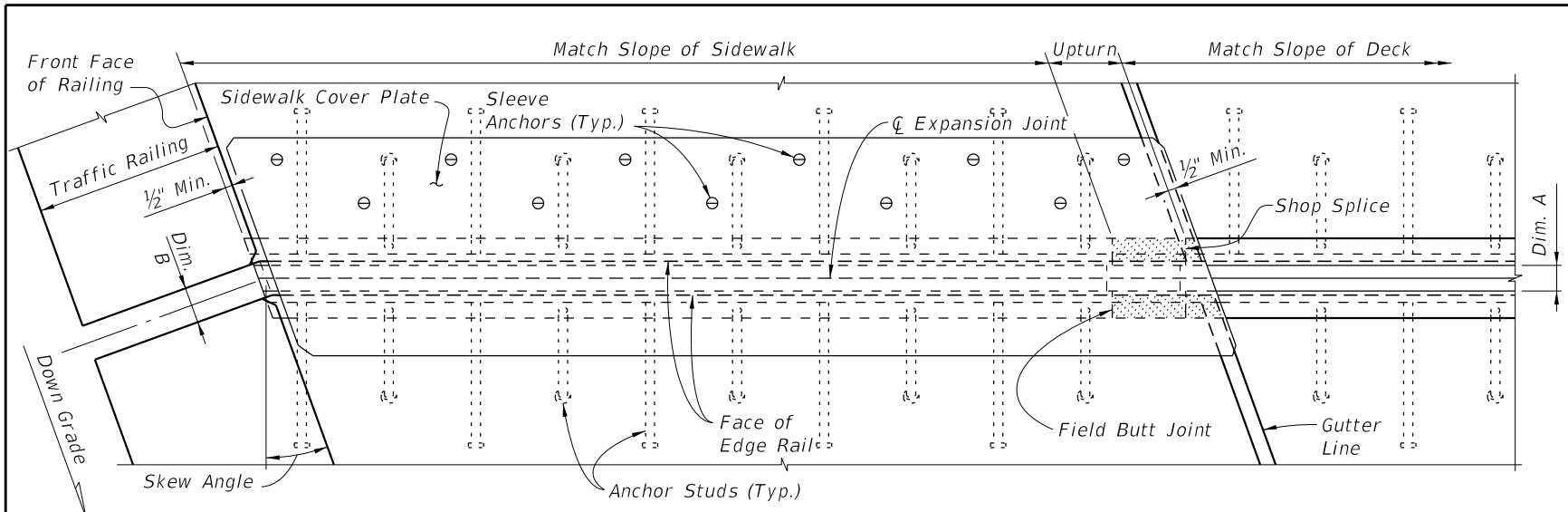
**JOINT TREATMENT AT LOW SIDE OF DECK & HIGH SIDE OF DECK WITH SLOPE < 2%**  
 (Sidewalk Cover Plate where applicable not shown for clarity)



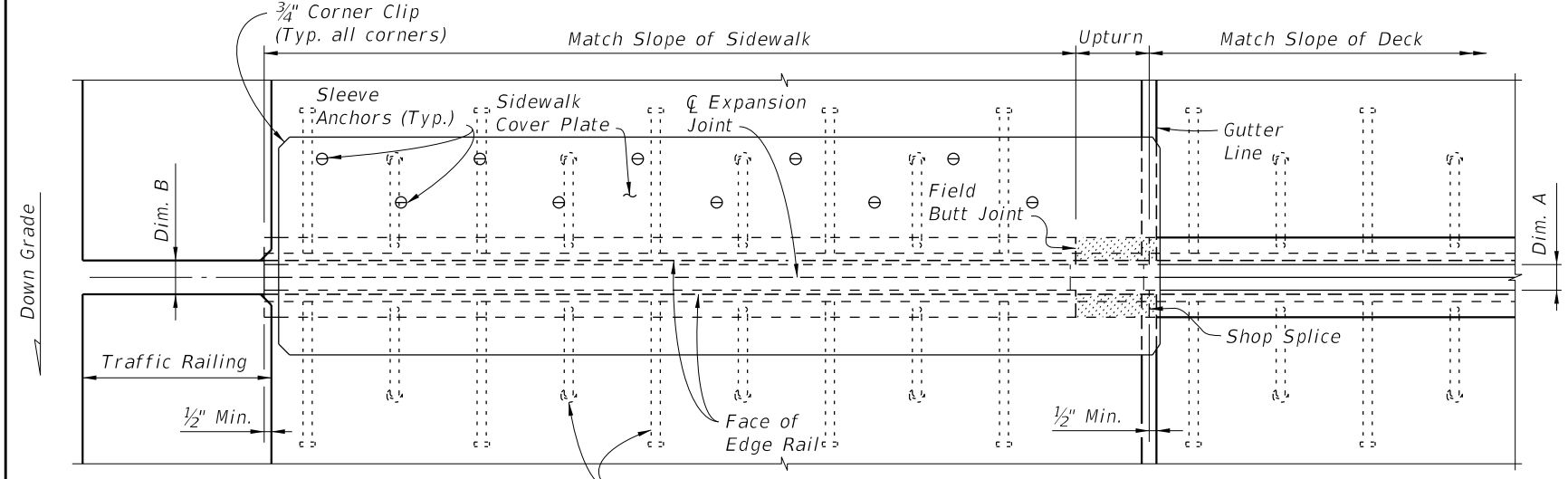
**UPTURN DETAIL (TYPICAL AT TRAFFIC BARRIERS AND PARAPETS)**

LAST REVISION	REVISION	DESCRIPTION:	 <b>FDOT DESIGN STANDARDS</b> FY 2012/2013	<b>STRIP SEAL EXPANSION JOINT</b>	INDEX NO.	SHEET NO.
	01/01/11					21100

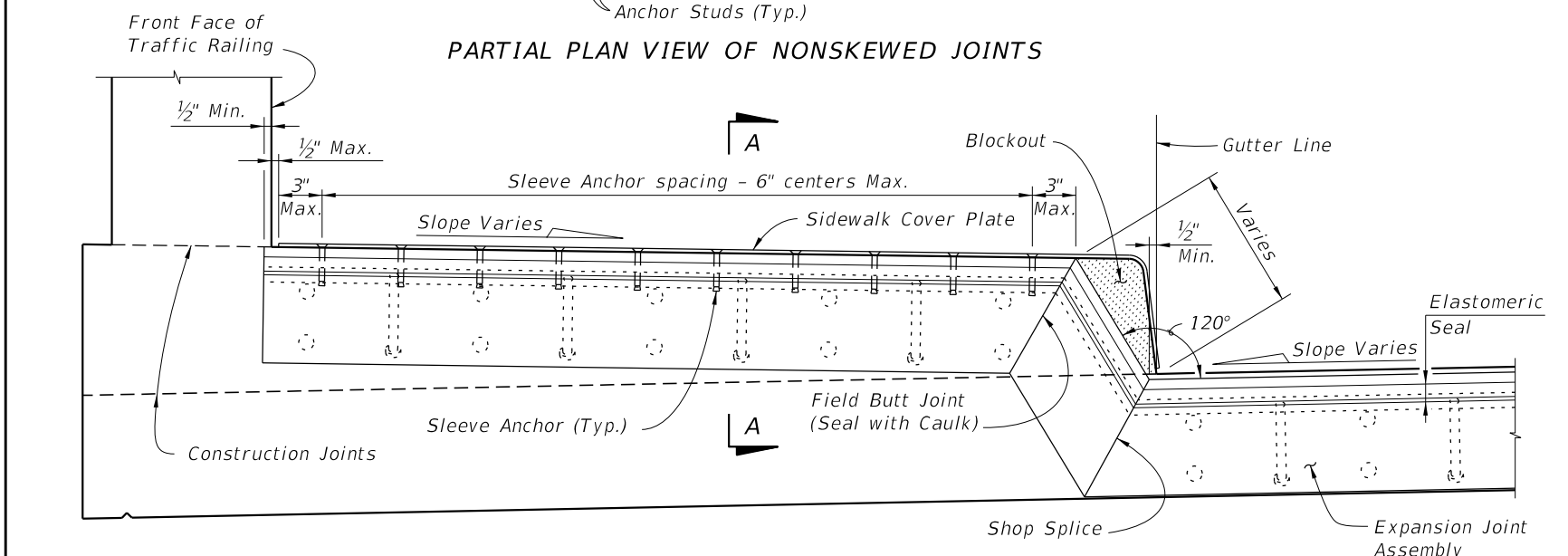
12/30/2011 11:51:19 AM r0960rh C:\projects\standards\structures\current\ready\4release\2012book\_draft\21100-3of3.dgn



**PARTIAL PLAN VIEW OF SKEWED JOINTS**

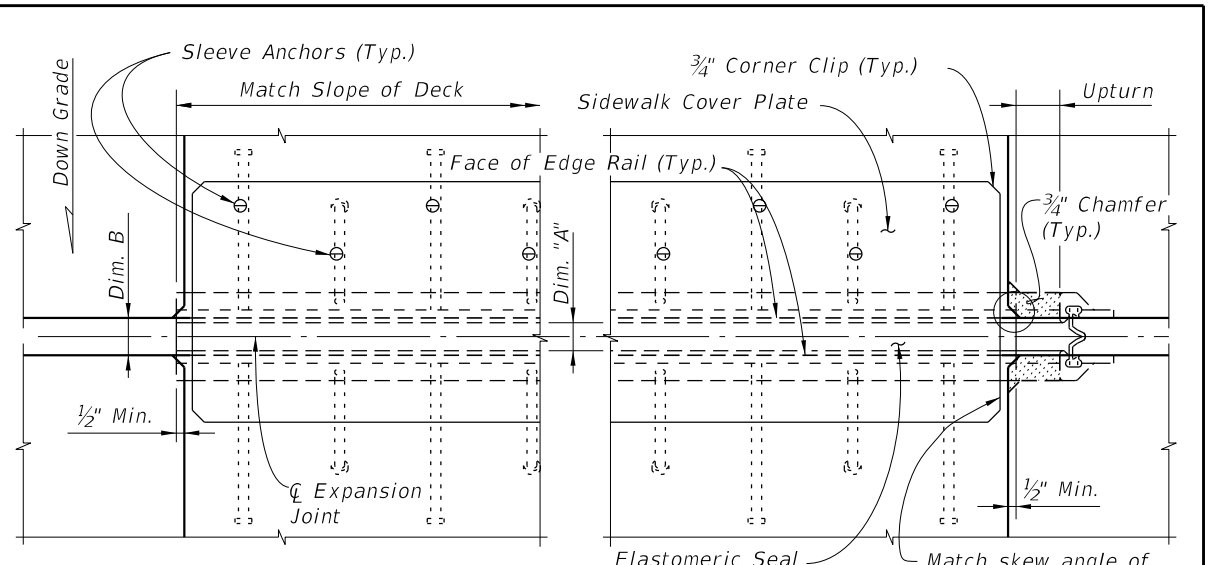


**PARTIAL PLAN VIEW OF NONSKEWED JOINTS**

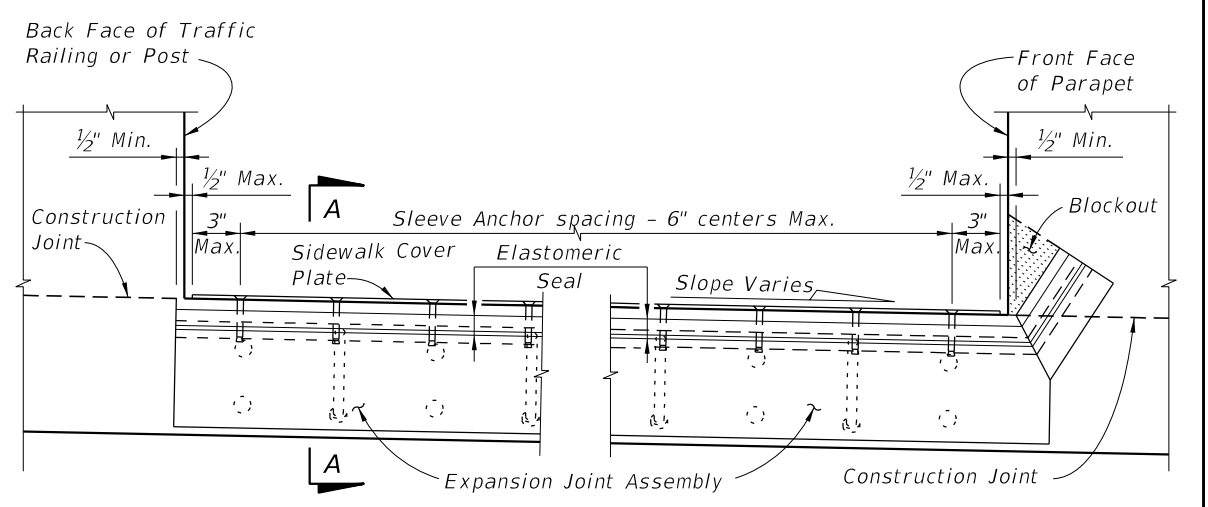


**PARTIAL SECTION ALONG Q JOINT**

**RAISED SIDEWALK DETAIL**

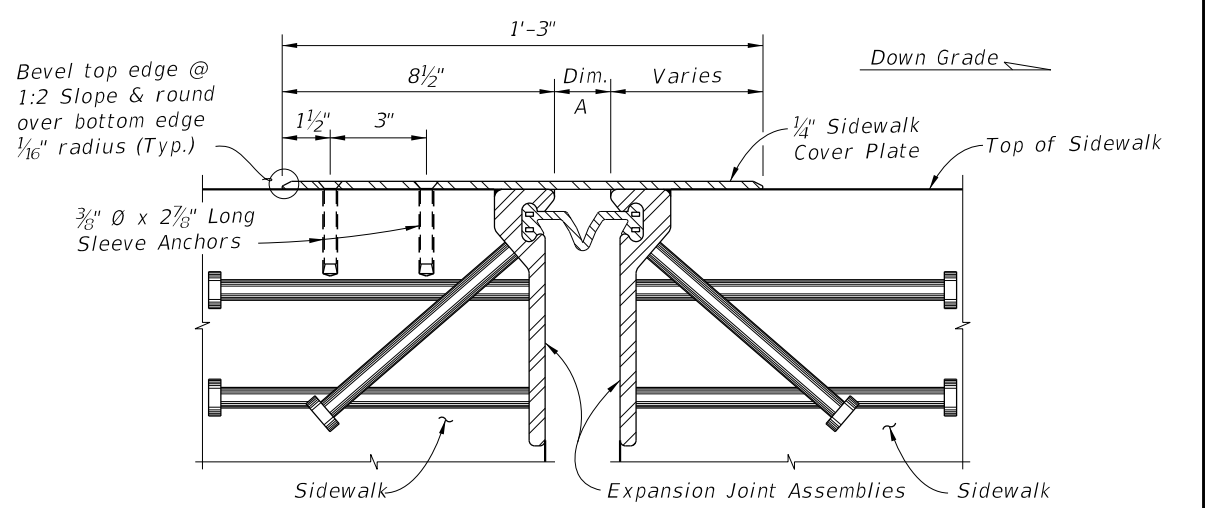


**PARTIAL PLAN VIEW**



**PARTIAL SECTION ALONG Q JOINT**

**FLUSH SIDEWALK DETAIL**



**SECTION A-A**

LAST REVISION	REVISION	DESCRIPTION:	 <b>FDOT DESIGN STANDARDS</b> FY 2012/2013	<b>STRIP SEAL EXPANSION JOINT</b>	INDEX NO.	SHEET NO.
	01/01/09					21100