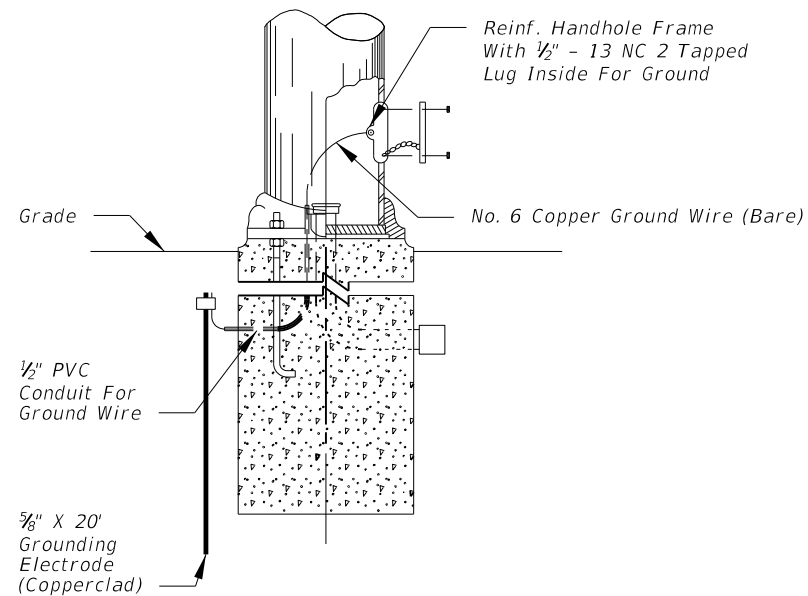
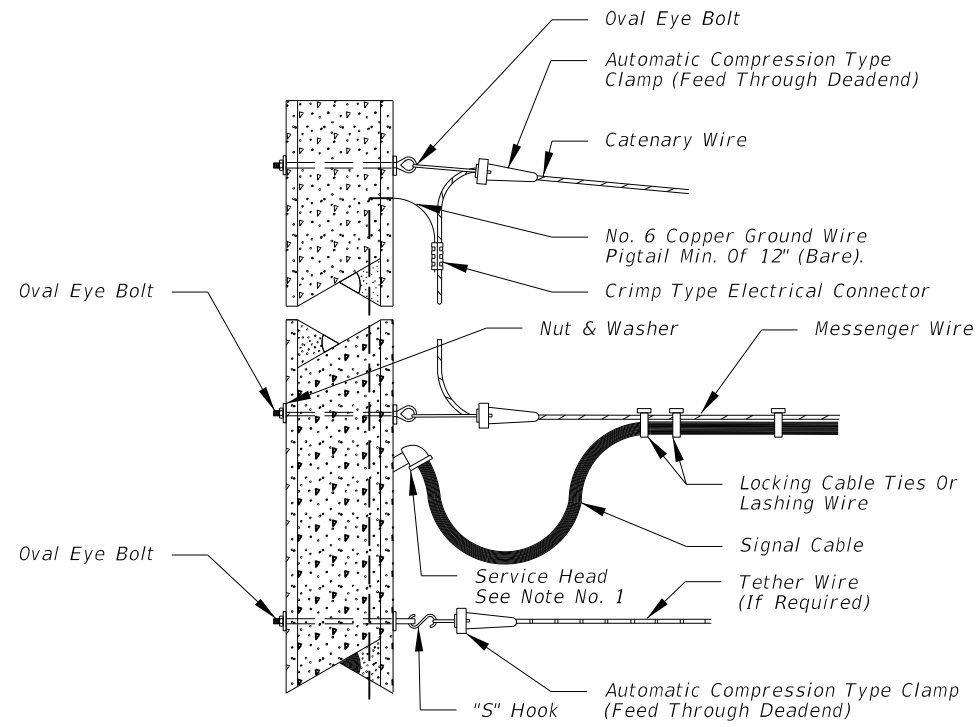
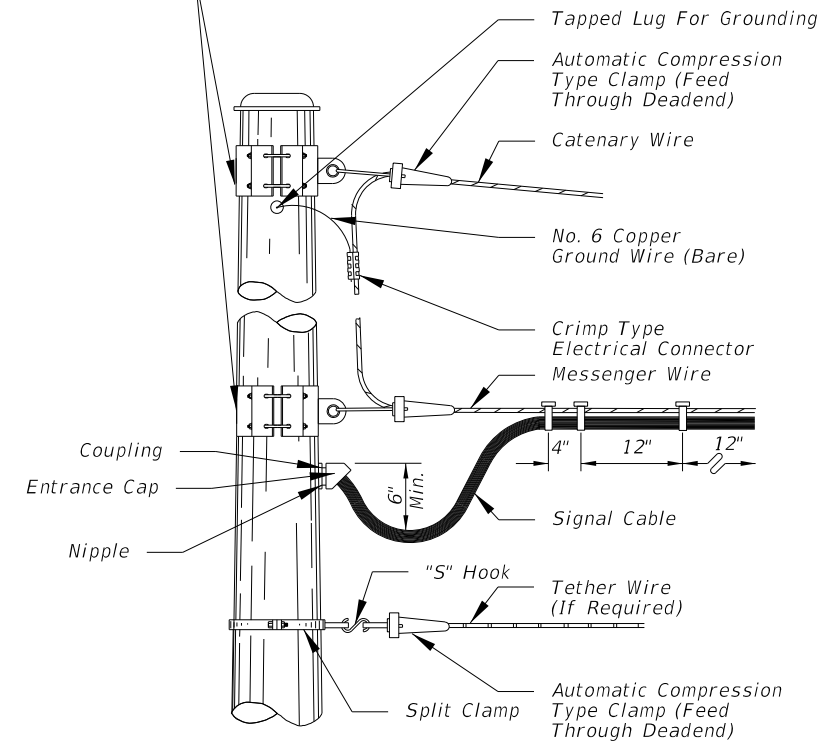
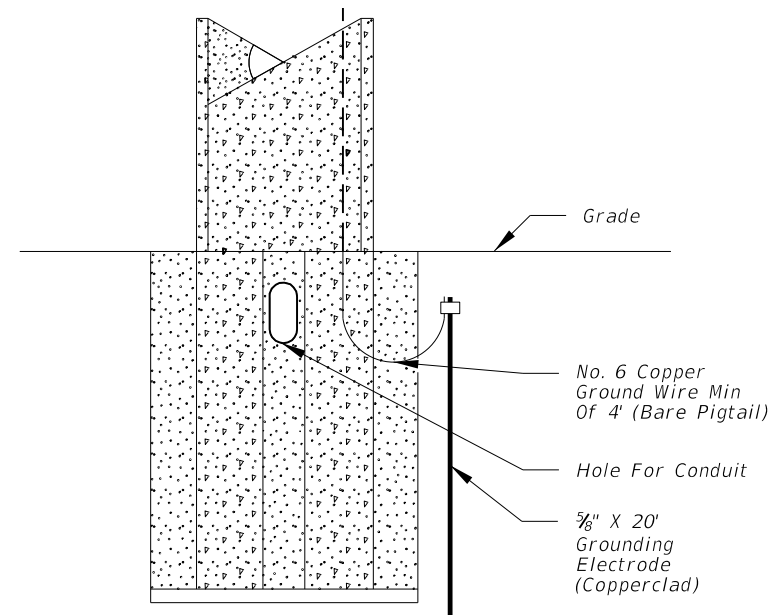


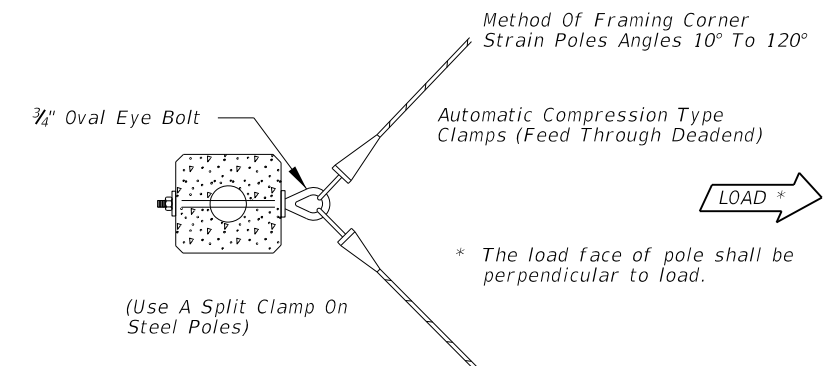
Clamp And Clevis
See Index 17723



STEEL POLE



PRESTRESSED CONCRETE POLE



Notes:

1. With the approval of the resident engineer, the service head hole for joint use poles may be drilled by the utility company at an angle of 90° but not less than 45° to the face of the pole.
2. Lashing wire should normally be used for distances of 12' or greater.
3. All hardware for signal attachment shall be stainless steel.
4. Meet all grounding requirements of Section 620 of the Standard Specifications.

C:\projects\standards\roadway\17700-s\17727-01.dgn
smg70re
7:26:09 PM
6/24/2013

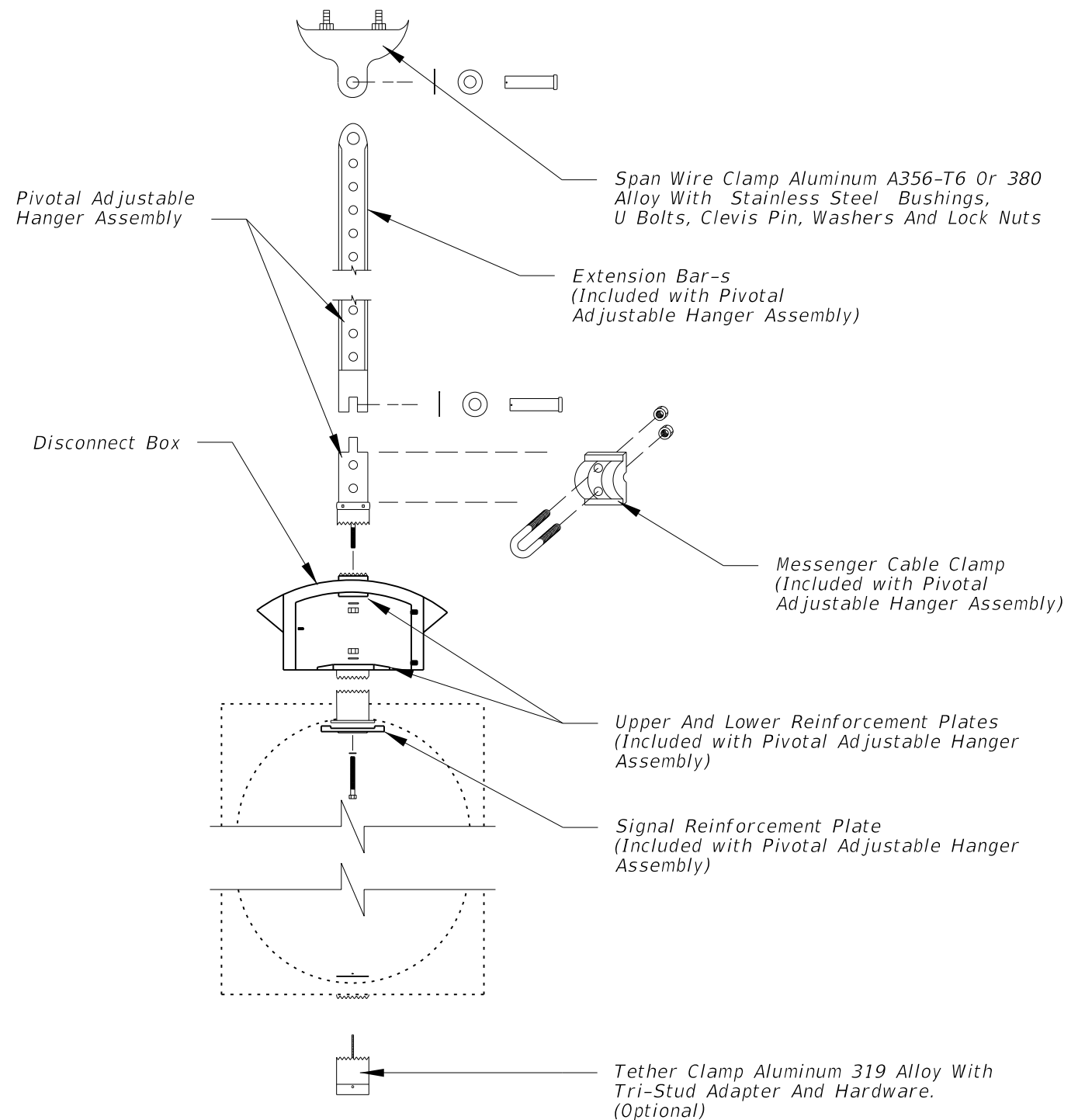
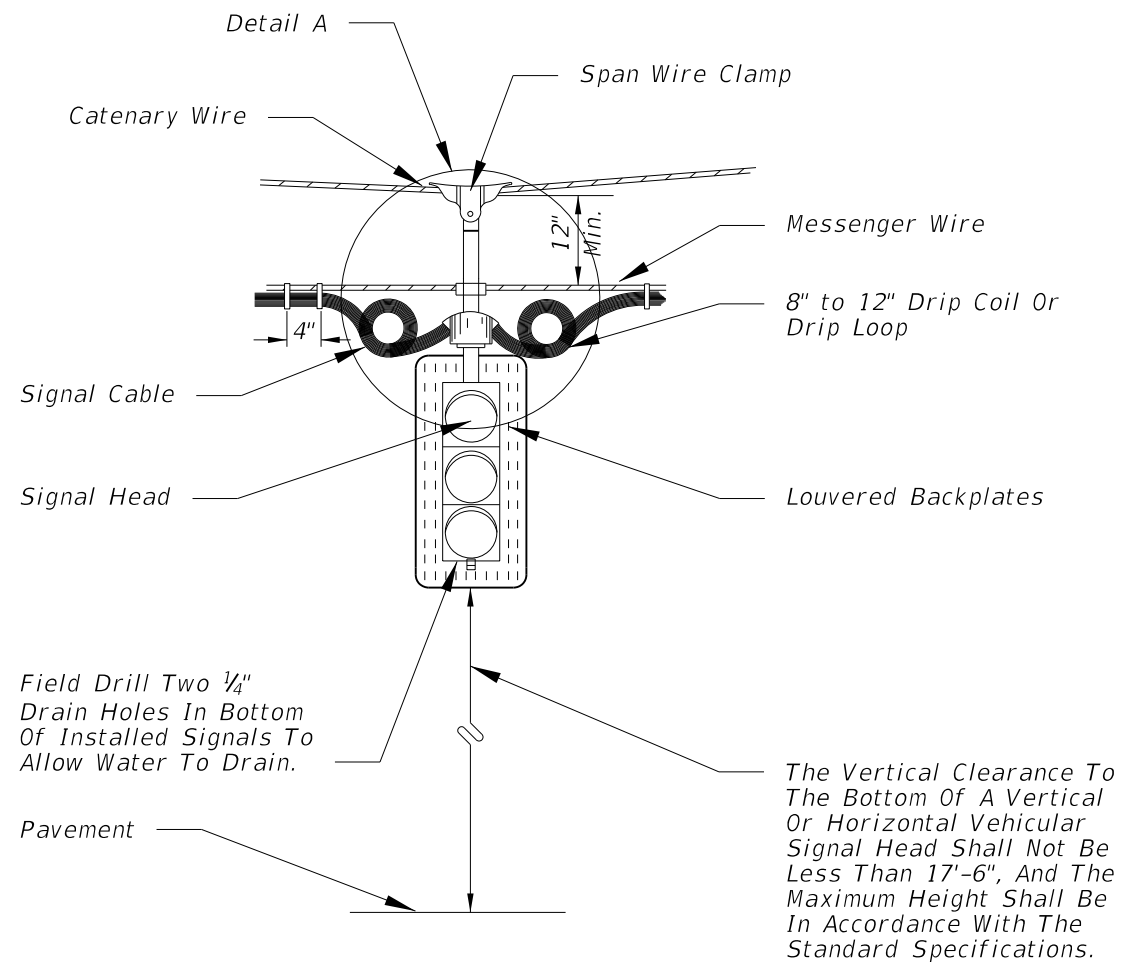
LAST REVISION	10/29/12
---------------	----------

DESCRIPTION:	R2013-03 Removed Singal Point Attachment And Revised Two Point Attachment
--------------	---



SIGNAL CABLE & SPAN WIRE
INSTALLATION DETAILS

INDEX NO.	17727
SHEET NO.	1 of 2




Detail A

Notes:

1. This drawing is representative of a Proprietary Pivotal Adjustable Hanger Assembly listed on the Department's Approved Products List (APL). For specific details and requirements see the vendor drawings on the APL at www3.dot.state.fl.us/trafficcontrolproducts/. The proprietary pivotal adjustable hanger assembly shall be assembled in accordance with the manufacturer's detailed drawings, procedures and specifications.
2. With the approval of the resident engineer, the service head hole for joint use poles may be drilled by the utility company at an angle of 90° but not less than 45° to the face of the pole.
3. Lashing wire should normally be used for distances of 12' or greater.
4. The overlapped connection of adjustable hangers shall use a minimum of 2 bolts with a minimum spacing of 2" between bolts.
5. Meet all grounding requirements of Section 620 of the Standard Specifications.

TWO POINT ATTACHMENT

C:\projects\standards\roadway\17700-s\17727-02.dgn smg70re 7:26:11 PM 6/24/2013

LAST REVISION 07/01/13	REVISION	DESCRIPTION:	 <p>FDOT 2014 DESIGN STANDARDS</p>	<p>SIGNAL CABLE & SPAN WIRE INSTALLATION DETAILS</p>	<p>INDEX NO. 17727</p>	<p>SHEET NO. 2 of 2</p>
---------------------------	----------	--------------	---	--	----------------------------	-----------------------------