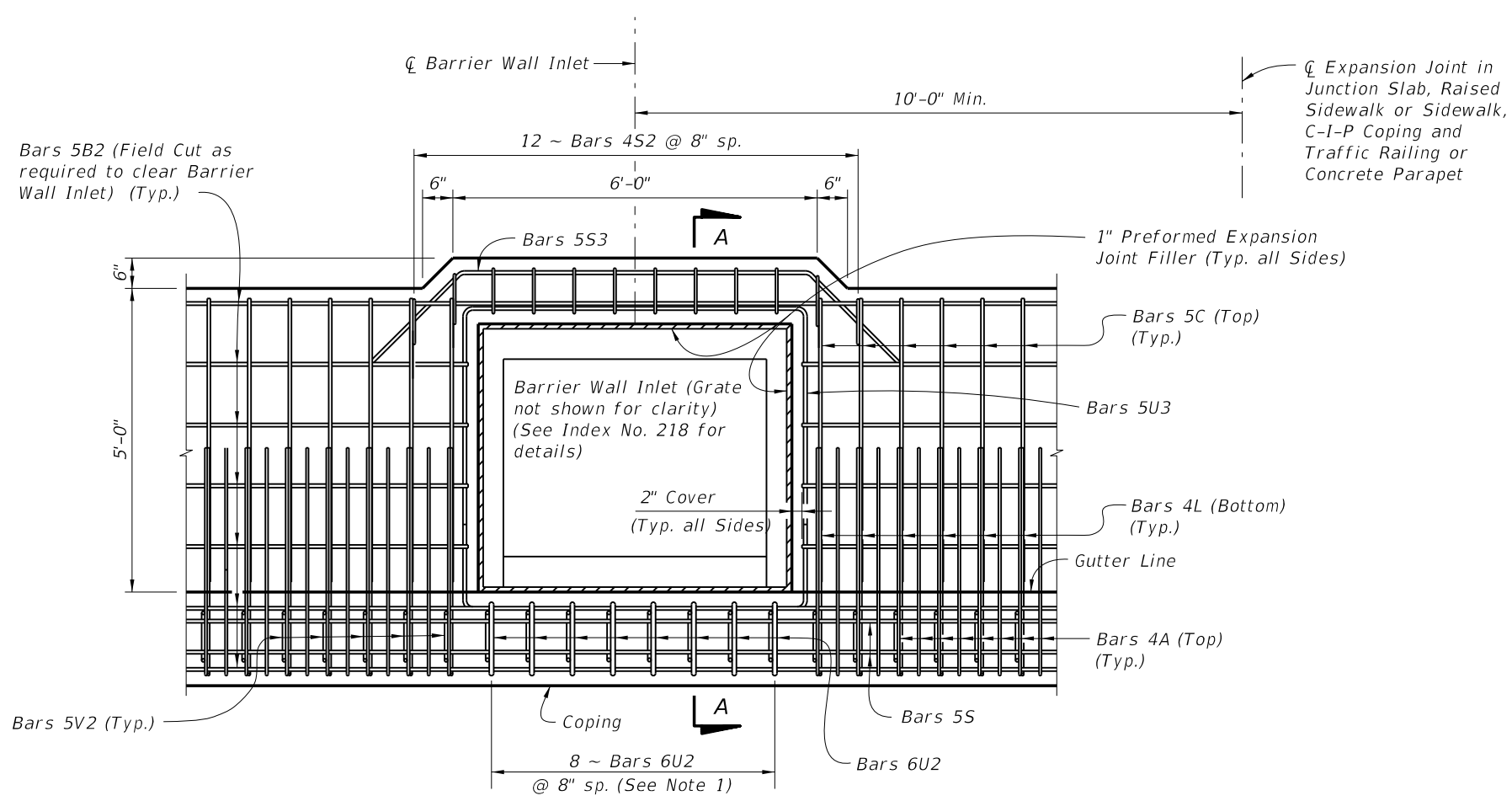
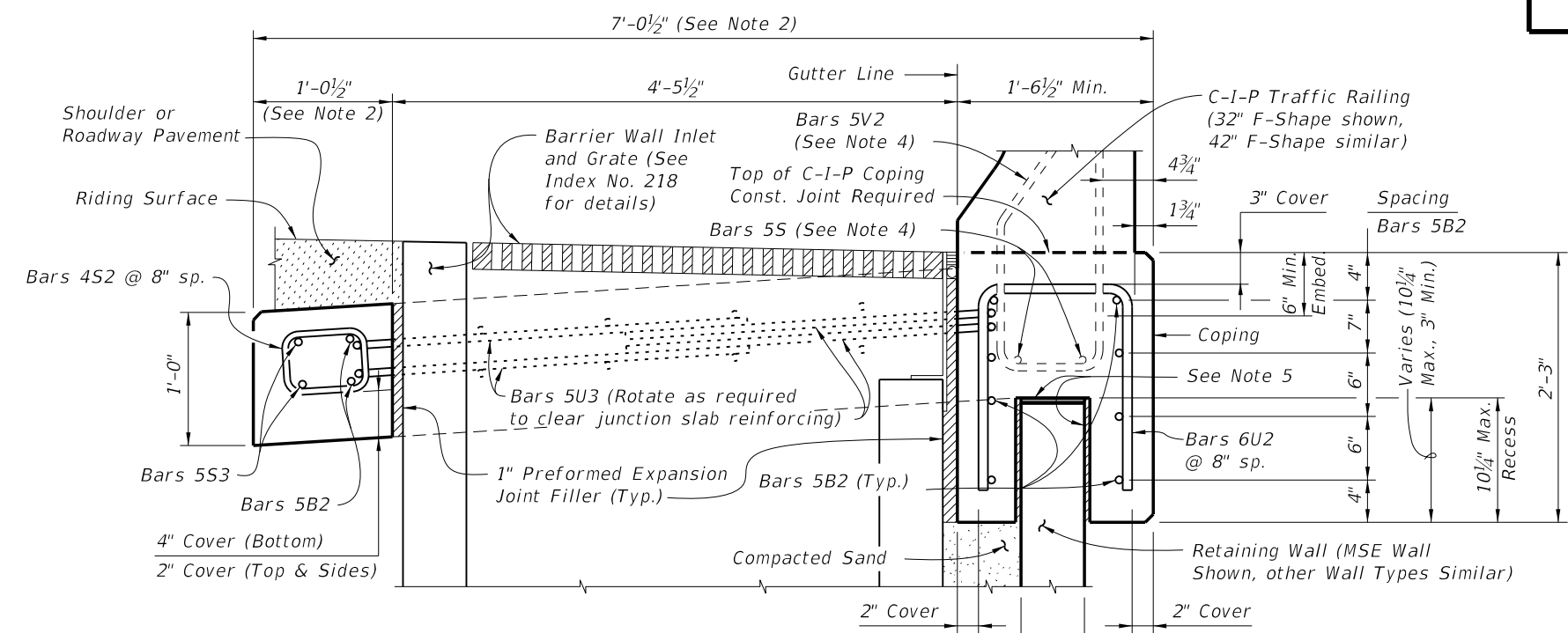


C:\projects\standards\structures\current\ready\4release\2014\B00K\06201-1\of1.dgn  
 sm970re  
 7:02:16 PM  
 6/24/2013



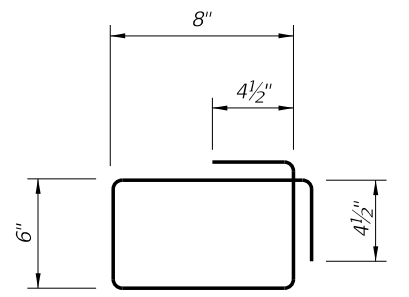
**PLAN VIEW**  
(Junction Slab Shown, Raised Sidewalk Similar)



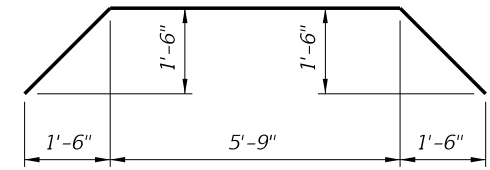
**SECTION A-A**  
SECTION THRU JUNCTION SLAB, BARRIER WALL INLET AND RETAINING WALL  
(Junction Slab Shown, Raised Sidewalk Similar)

**REINFORCING STEEL BENDING DIAGRAMS - DRAINAGE**

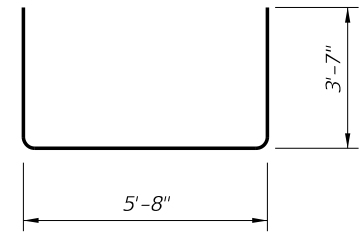
BILL OF REINFORCING STEEL			
MARK	REQD.	SIZE	LENGTH
S2	12	4	3'-1"
S3	2	5	10'-0"
U2	8	6	VARIES
U3	4	5	12'-10"



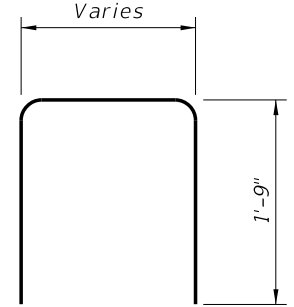
**STIRRUP BAR 4S2**



**BAR 5S3**



**BAR 5U3**



**BAR 6U2**

**REINFORCING STEEL NOTES:**

1. All bar dimensions in the bending diagrams are out to out.
2. All reinforcing steel at open joints will have a 2" minimum cover.
3. See Index Nos. 6110, 6120 & 6130 for Bars 4A (or 5A), 5B, 5C and 4L (or 5L).
4. The Contractor may use Welded Wire Reinforcement (WWR) when approved by the Engineer. WWR must consist of Deformed wire meeting the requirements of Specification Section 931.

**NOTES:**

1. Spacing shown is along the Gutter Line. Spacing shown is for C-I-P Junction Slab. For C-I-P Raised Sidewalks or Sidewalks, match bar spacing and size shown in Typical Sections (i.e., 11 ~ Bars 5U2 and 15 ~ Bars 4S2 @ 6" spacing for Raised Sidewalks).
2. Dimensions shown are for junction slab. Increase width as required for C-I-P Raised Sidewalk and Sidewalks.
3. Actual location & width vary depending on type of Retaining Wall used.
4. See Index No. 6110 for Bars 5V2 and 5S.
5. Two Layers 30Lb. Roofing Felt (Top) & Expanded Polystyrene shown hatched (1/2" Each Side).
6. Locate  $\bar{C}$  Barrier Wall Inlet a minimum of 10'-0" away from  $\bar{C}$  Expansion Joints in Junctions Slab, Raised Sidewalk or Sidewalk, C-I-P Coping and Traffic Railing or Concrete Parapet.
7. Work this Index with the following as appropriate:  
 Index No. 6110  
 Index No. 6120  
 Index No. 6130