

## Index 20299 Build-Up and Deflection Data for Florida-U Beams

### Design Criteria

**AASHTO LRFD Bridge Design Specifications**, 6th Edition; **Structures Detailing Manual (SDM)**; **Structures Design Guidelines (SDG)**

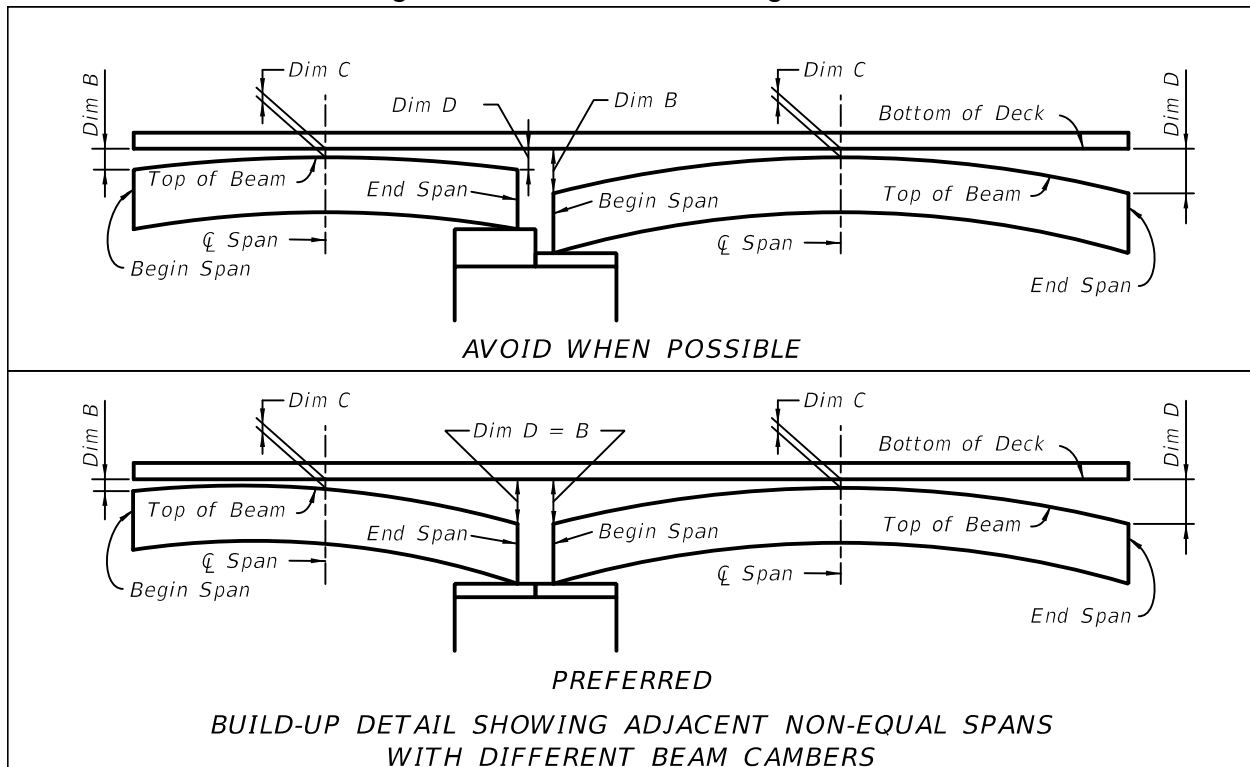
### Design Assumptions and Limitations

Use this standard in conjunction with Indexes 20210, 20248, 20254, 20263 and 20272.

Unless otherwise required as a design parameter, beam camber for computing the theoretical build-up must be based on 120-day old beam concrete.

Consider the effects of horizontal curvature with bridge deck cross slope when determining the minimum theoretical build-up over the tip of the inside flange.

For a given size and type of beam, beam camber and associated Dim B and Dim D will vary due to span lengths and beam spacings. Dim B and Dim D will also vary from span to span along the length of a bridge due to deck geometry. To provide for better aesthetics and potentially easier detailing of the supporting pedestals, where possible adjust the values of Dim B and Dim D over equal height beams in adjacent spans so as to allow the beam bottom flanges to line up. Dim B and Dim D do not necessarily have to be the same value for a single beam. See the following sketch:



### Plan Content Requirements

Complete the following "Build-Up and Deflection Data Table for Florida-U Beams" and include it on the superstructure detail sheets. See [Introduction I.3](#) for more information regarding use of Data Tables.

BUILD-UP & DEFLECTION DATA TABLE FOR FLORIDA-U BEAMS										Table Date 01/01/12
LOCATION		REQUIRED THEORETICAL BUILD-UP OVER Q LEFT FLANGE			REQUIRED THEORETICAL BUILD-UP OVER Q RIGHT FLANGE			NET BEAM CAMBER (PRESTRESS - DEAD LOAD OF BEAM) @ 120 DAYS	DEAD LOAD DEFLECTION DURING DECK POUR @ 120 DAYS DIM A	BUILD-UP CASE NO.
SPAN NO.	BEAM NO.	AT BEGIN SPAN DIM B	AT Q SPAN DIM C	AT END SPAN DIM D	AT BEGIN SPAN DIM B	AT Q SPAN DIM C	AT END SPAN DIM D			

NOTES: Work this sheet with Design Standard Index No. 20299.

### Payment

Include estimated build-up concrete quantities with the estimated deck concrete quantities. Do not break out estimated build-up concrete quantities.

In the absence of more refined calculations, the following method to calculate estimated concrete build-up quantities may be used:

For Case 1, 2 & 3  
 V = Left Flange + Right Flange: 
$$V = \frac{LW \left[ C + \left( \frac{B + D - 2C}{6} \right) \right]}{27} + \frac{LW \left[ C + \left( \frac{B + D - 2C}{6} \right) \right]}{27}$$

For Case 4  
 V = Left Flange + Right Flange: 
$$V = \frac{LW \left[ \left( \frac{B + D}{2} \right) + \left( \frac{2}{3} \left( C - \frac{B + D}{2} \right) \right) \right]}{27} + \frac{LW \left[ \left( \frac{B + D}{2} \right) + \left( \frac{2}{3} \left( C - \frac{B + D}{2} \right) \right) \right]}{27}$$

- Where:
- V = Total Volume of build-up per beam (CY)
  - L = Beam Length (ft)
  - W = Width of beam top flange (ft)
  - B; C; D = Build-up Thickness (ft)