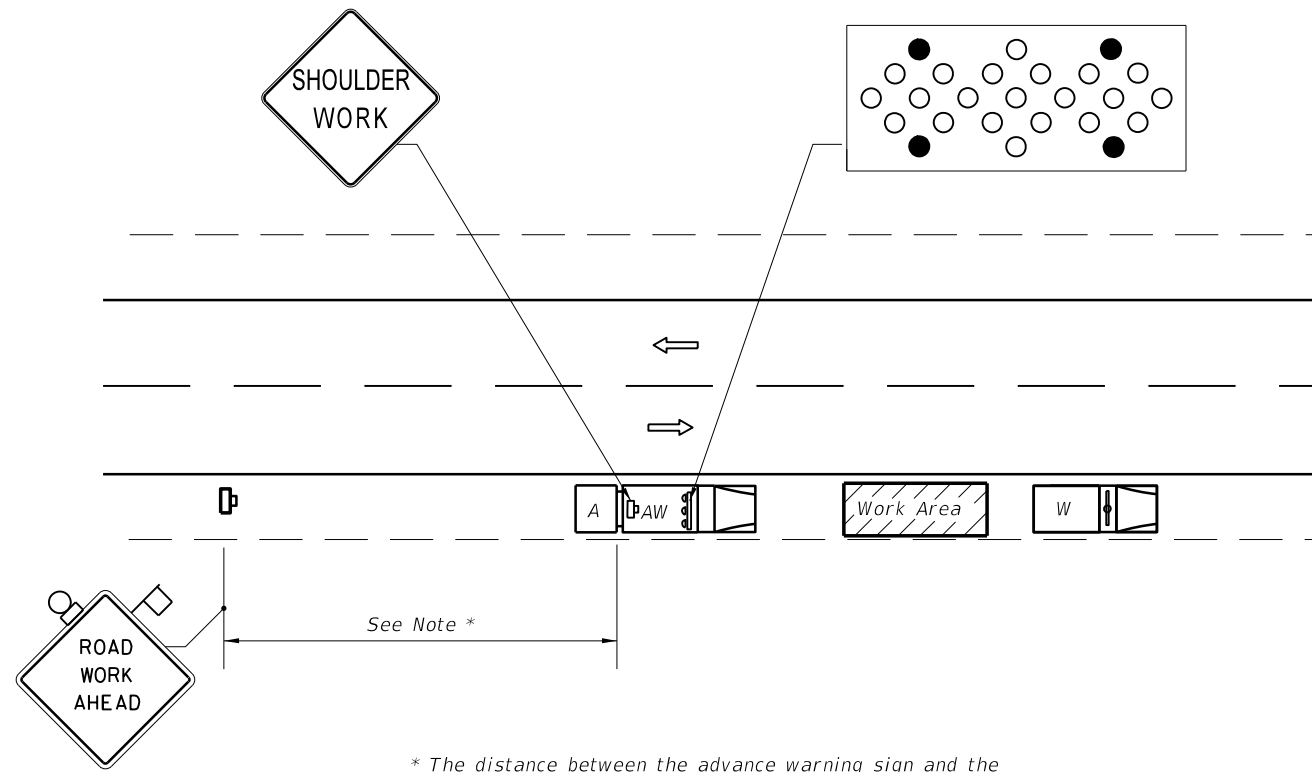
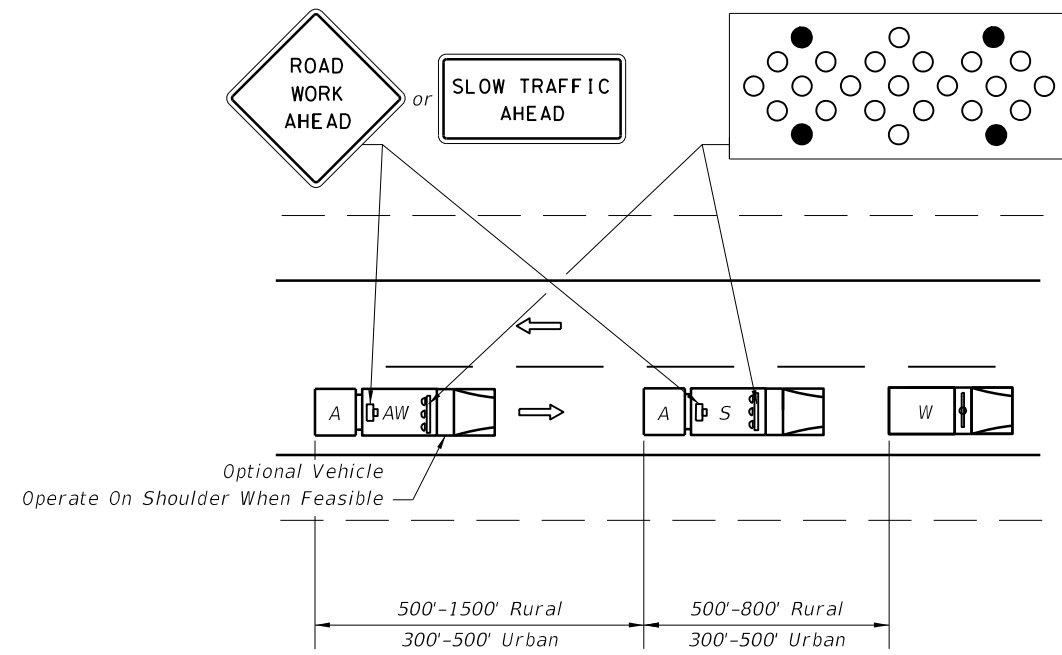


C:\projects\standards\roadway\00600-s\00607-01.dgn  
r0960rh  
10:47:45 AM  
6/28/2012



\* The distance between the advance warning sign and the work location should not exceed 5 miles.

**WORK ON SHOULDER**



**ADVANCE WARNING ARROW BOARD MODE • CAUTION**

The Advance Warning Vehicle (Optional) may be used at the direction of the Engineer. If an Advance Warning Vehicle is operated within the travel way, an approved Truck Mounted Attenuator will be required on the Advance Warning Vehicle but not required on the Shadow Vehicle. The Advance Warning Arrow Board and Warning Sign are required on both the Advance Warning and Shadow Vehicles.

**WORK IN TRAVEL WAY**

**GENERAL NOTES**

1. Where work activities within 2' of the edge of travel way are incidental (i.e., Mowing, Litter Removal), the Engineer may delete requirements for signs and the advance warning vehicle provided vehicles in the work area have high-intensity rotating, flashing, oscillating, or strobe lights operating.
2. If an arrow board is used, the caution mode shall be used.
3. Shadow and Advance Warning Vehicle shall display rotating/strobe lights.
4. For general TCZ requirements and additional information, refer to Index No. 600.

**SYMBOLS**

- Work Area
- Sign With 18" x 18" (Min.) Orange Flag And Type B Light
- Work Zone Sign
- Lane Identification + Direction of Traffic
- Work Vehicle With Rotating/Strobe Lights
- Shadow (S) Or Advance Warning (AW)
- Vehicle with Advance Warning Arrow Board and Sign Message
- Truck/Trailer Mounted Attenuator (TMA)
- Advanced Warning Arrow Board

**CONDITIONS**

WHERE ANY VEHICLE, EQUIPMENT, WORKERS OR THEIR ACTIVITIES REQUIRE AN INTERMITTENT OR CONTINUOUS MOVING OPERATION.

LAST REVISION	07/01/09	DESCRIPTION:	 <b>FDOT DESIGN STANDARDS</b> 2013	<b>TWO-LANE, TWO-WAY, MOBILE OPERATION, WORK ON SHOULDER AND WORK WITHIN THE TRAVEL WAY</b>	INDEX NO.	SHEET NO.
					607	1