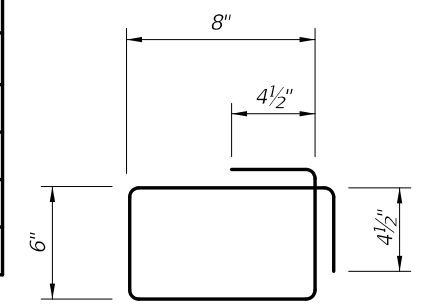
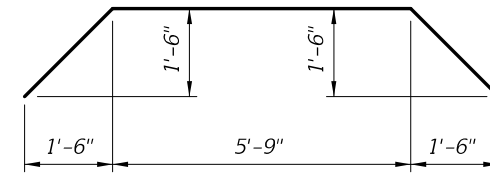


REINFORCING STEEL BENDING DIAGRAMS - DRAINAGE

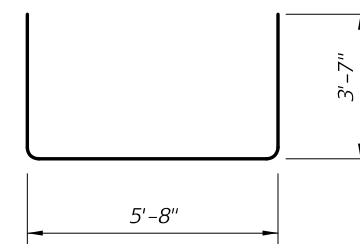
| BILL OF REINFORCING STEEL | | | |
|---------------------------|-------|------|---------|
| MARK | REQD. | SIZE | LENGTH |
| S2 | 12 | 4 | 3'-1" |
| S3 | 2 | 5 | 10'-0" |
| U2 | 8 | 6 | VARIES |
| U3 | 4 | 5 | 12'-10" |



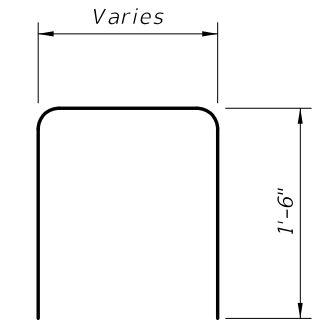
STIRRUP BAR 452



BAR 553



BAR 5U3



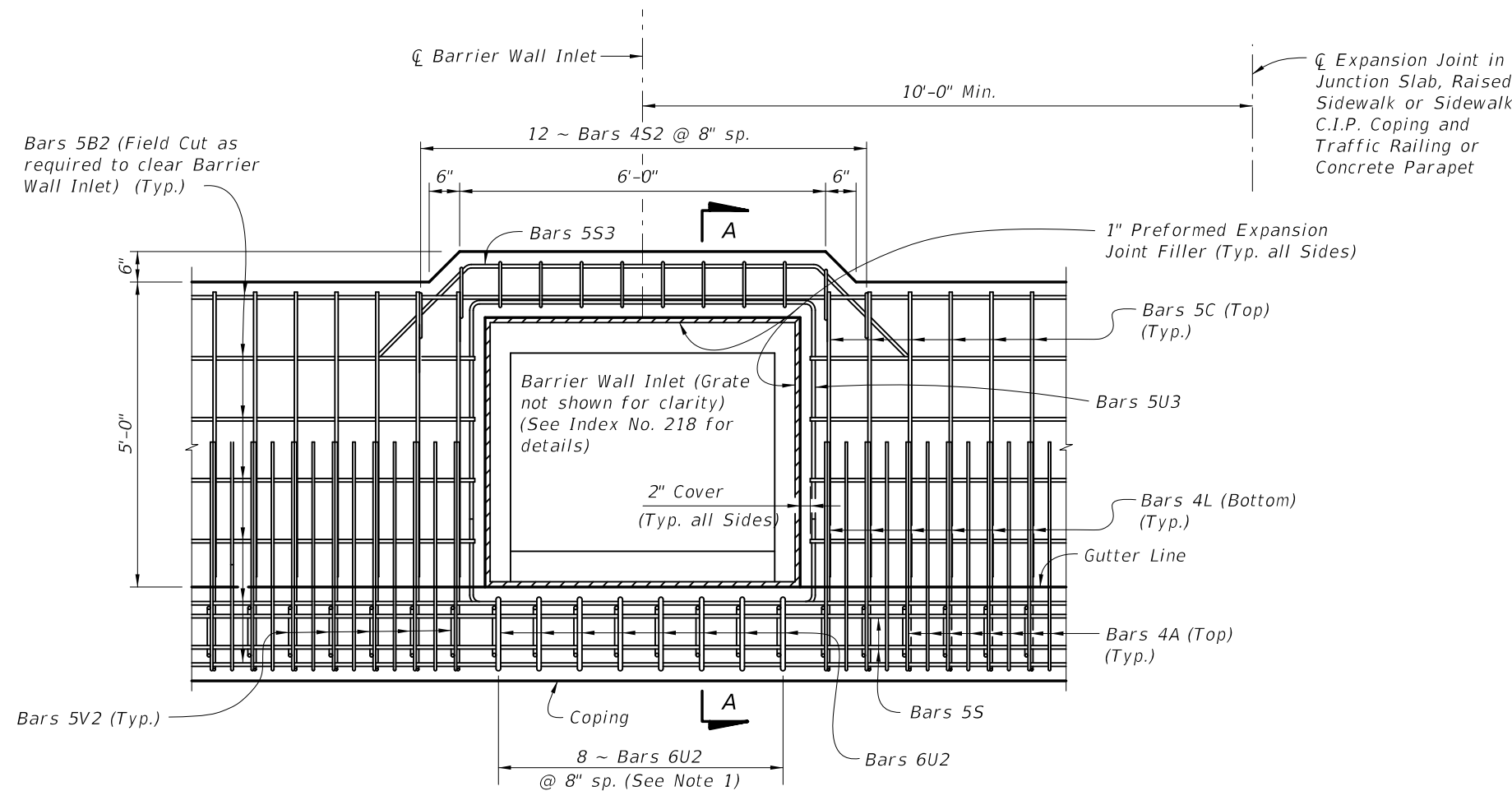
BAR 6U2

REINFORCING STEEL NOTES:

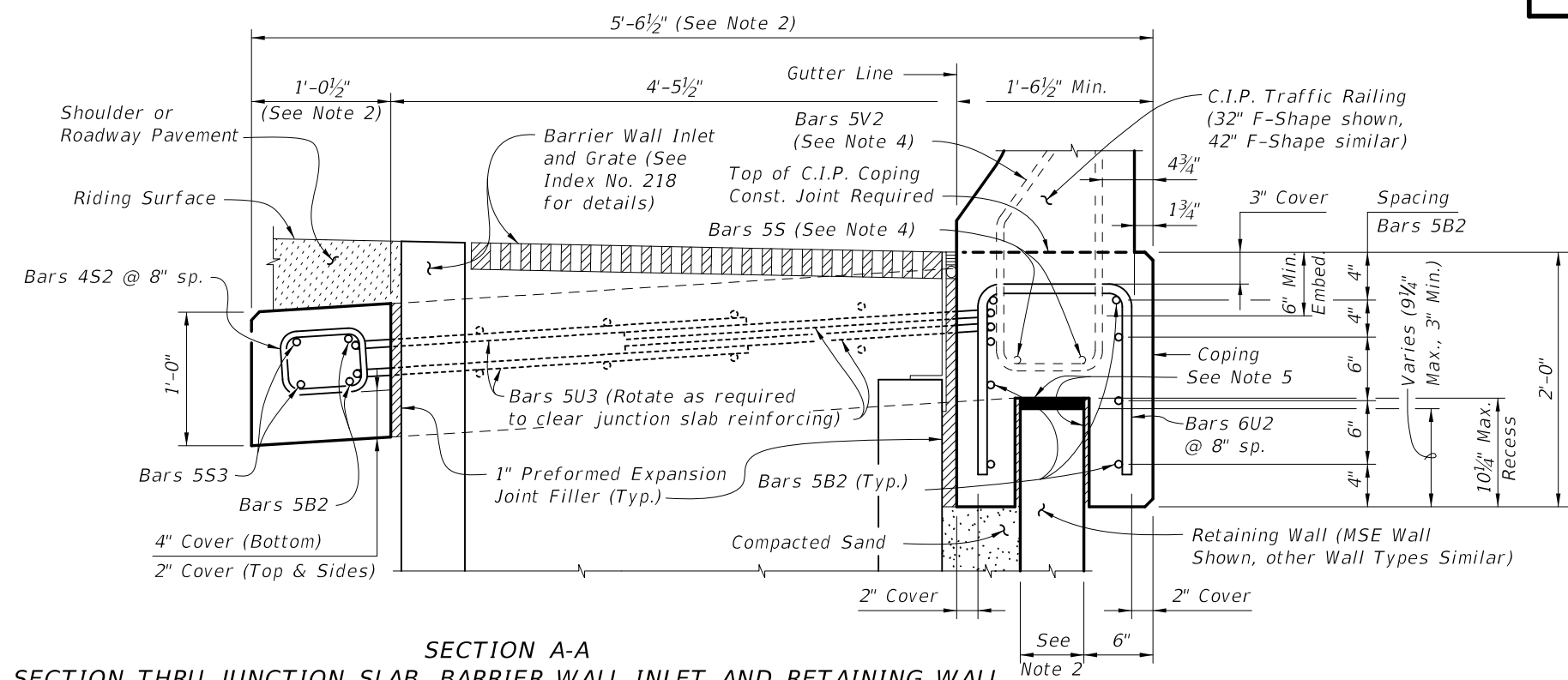
1. All bar dimensions in the bending diagrams are out to out.
2. All reinforcing steel at open joints will have a 2" minimum cover.
3. See Index Nos. 6110, 6120 & 6130 for Bars 4A (or 5A), 5B, 5C and 4L (or 5L).
4. The Contractor may use Welded Wire Reinforcement when approved by the Engineer. Welded Wire Reinforcement will conform to ASTM A 497.

NOTES:

1. Spacing shown is along the Gutter Line. Spacing shown is for C.I.P. Junction Slab. For C.I.P. Raised Sidewalks or Sidewalks, match bar spacing and size shown in Typical Sections (i.e., 11 ~ Bars 5U2 and 15 ~ Bars 452 @ 6" spacing for Raised Sidewalks).
2. Dimensions shown are for junction slab. Increase width as required for C-I-P Raised Sidewalk and Sidewalks.
3. Actual location & width vary depending on type of Retaining Wall used.
4. See Index No. 6110 for Bars 5V2 and 5S.
5. 1" Preformed Joint Filler (Top) & Expanded Polystyrene shown hatched (1/2" Each Side).
6. Locate \bar{C} Barrier Wall Inlet a minimum of 10'-0" away from \bar{C} Expansion Joints in Junctions Slab, Raised Sidewalk or Sidewalk, C.I.P. Coping and Traffic Railing or Concrete Parapet.
7. Work this Index with the following as appropriate:
Index No. 6110
Index No. 6120
Index No. 6130



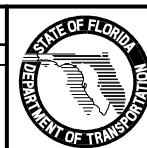
PLAN VIEW
(Junction Slab Shown, Raised Sidewalk Similar)



SECTION A-A
SECTION THRU JUNCTION SLAB, BARRIER WALL INLET AND RETAINING WALL
(Junction Slab Shown, Raised Sidewalk Similar)

REVISIONS

| DATE | BY | DESCRIPTION | DATE | BY | DESCRIPTION |
|----------|-----|---|------|----|-------------|
| 01/01/11 | SJN | New Index No. & Title (Previously Index No. 5300, Sheet 19 of 19); Changed junction slab notes & Bar S2; Added Bar 5S3. | | | |



2010 Interim Design Standard

JUNCTION SLAB AT DRAINAGE INLET OPENINGS

| | |
|--------------|-----------|
| Interim Date | Sheet No. |
| 01/01/11 | 1 of 1 |
| Index No. | |
| 6201 | |