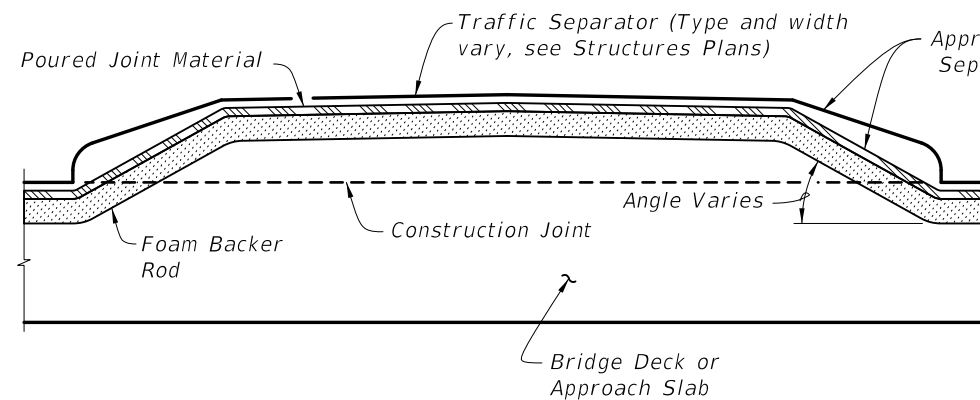
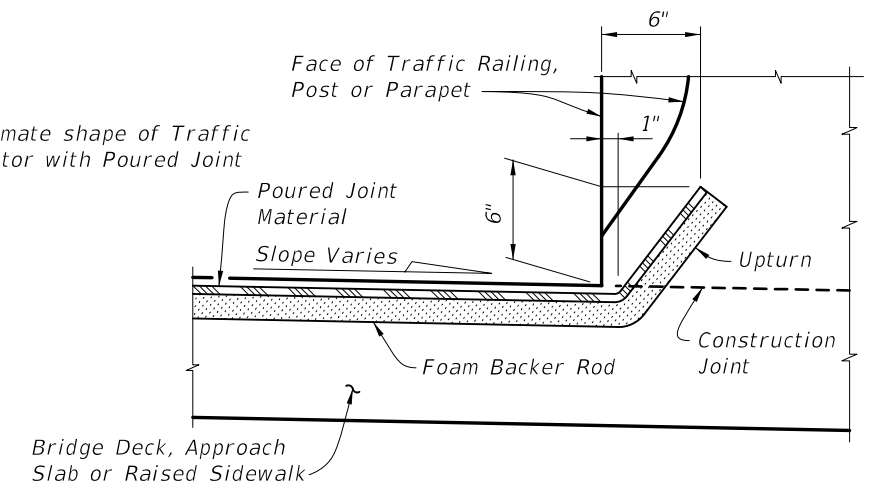


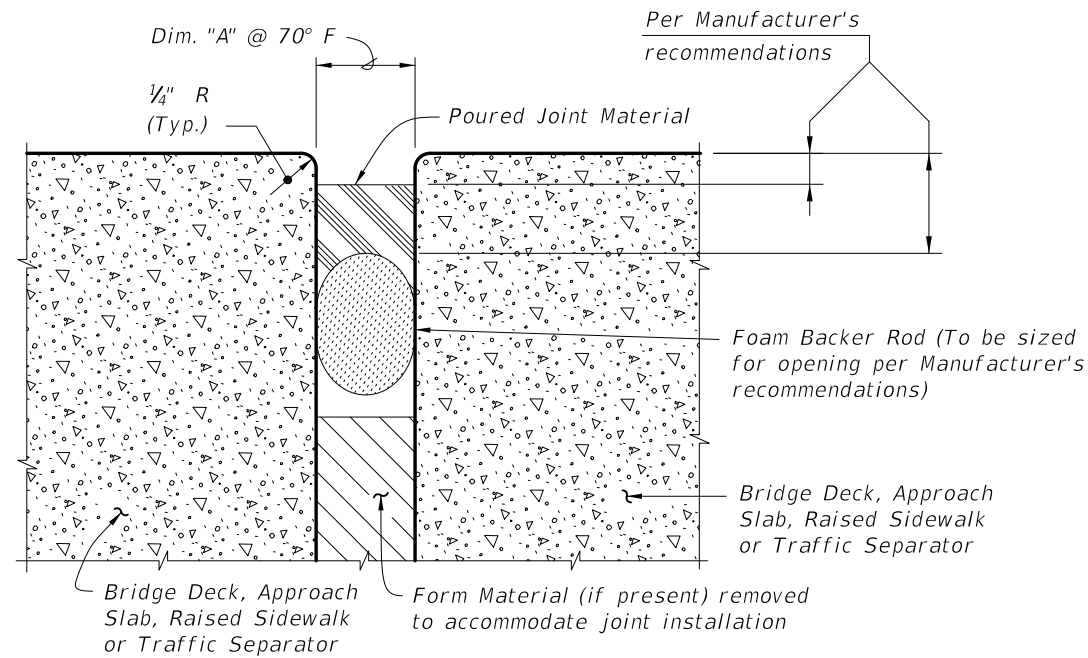
PARTIAL SECTION ALONG \mathcal{C} JOINT
JOINT TREATMENT AT HIGH SIDE OF
DECK WITH SLOPES 2% OR GREATER



PARTIAL SECTION ALONG \mathcal{C} JOINT,
JOINT TREATMENT AT TRAFFIC SEPARATOR



PARTIAL SECTION ALONG \mathcal{C} JOINT
JOINT TREATMENT AT LOW SIDE OF DECK OR
HIGH SIDE OF DECK WITH SLOPES < 2%



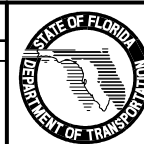
TYPICAL SECTION THRU JOINT

GENERAL NOTES:

1. Furnish Poured Joint With Backer Rod Expansion Joint Systems in accordance with Specification Section 458 and 932.
2. Submit shop drawings for Sidewalk Cover Plates showing all materials and project specific details and dimensions.
3. Refer to Specification Section 458 for installation and construction requirements.
4. Refer to the Structures Plans, Poured Expansion Joint Data Table for Dim. "A" @ 70° F.

REVISIONS

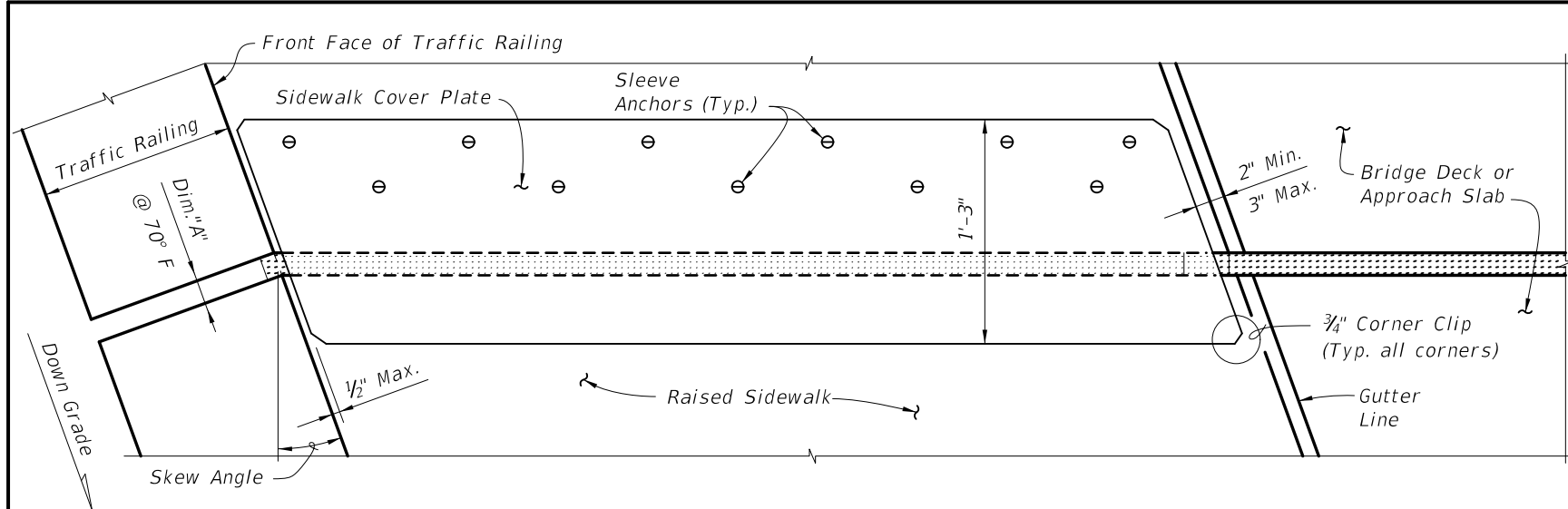
DATE	BY	DESCRIPTION	DATE	BY	DESCRIPTION
01/01/11	CMH	Deleted "INSTRUCTION TO DESIGNERS" note, and Notes 2, 3 & 5.			



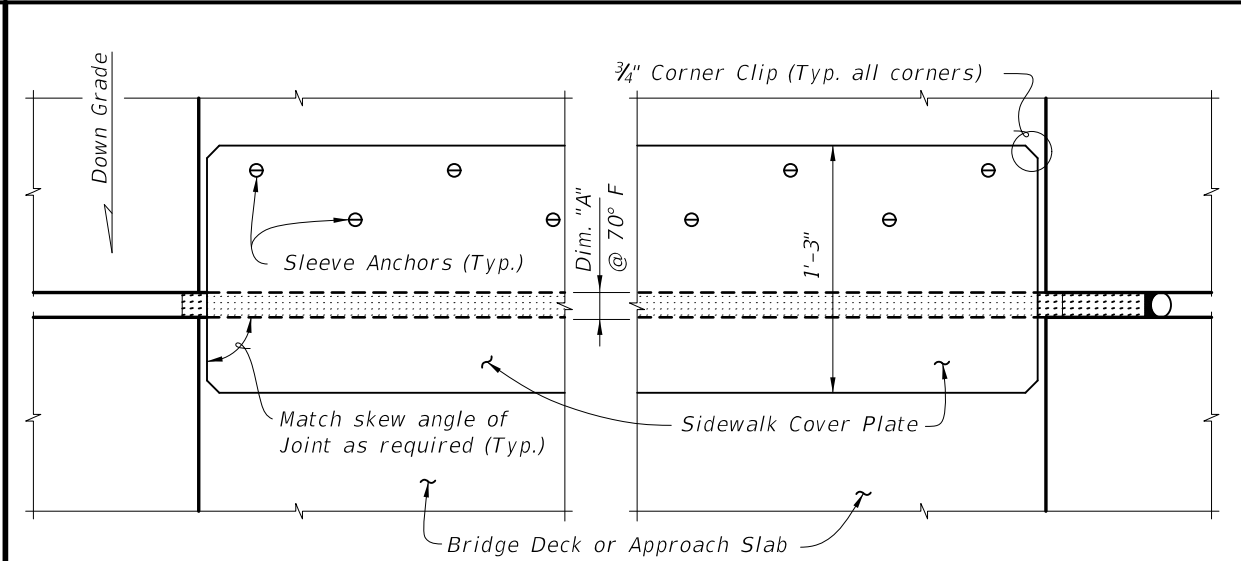
2010 Interim Design Standard

POURED JOINT WITH BACKER ROD
EXPANSION JOINT SYSTEM

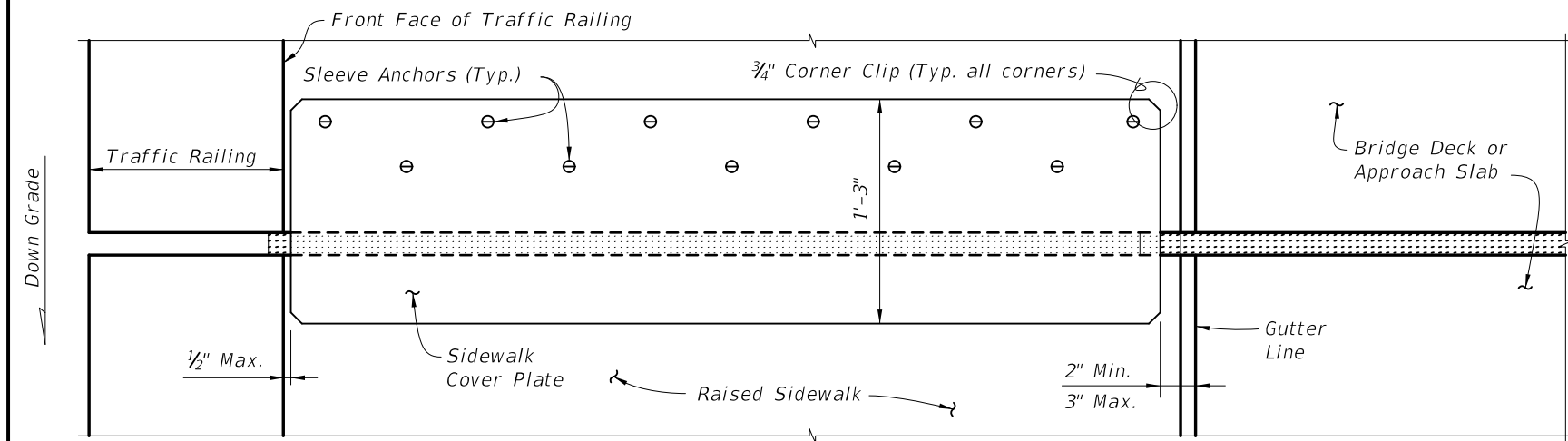
Interim Date	Sheet No.
01/01/11	1 of 2
Index No.	
21110	



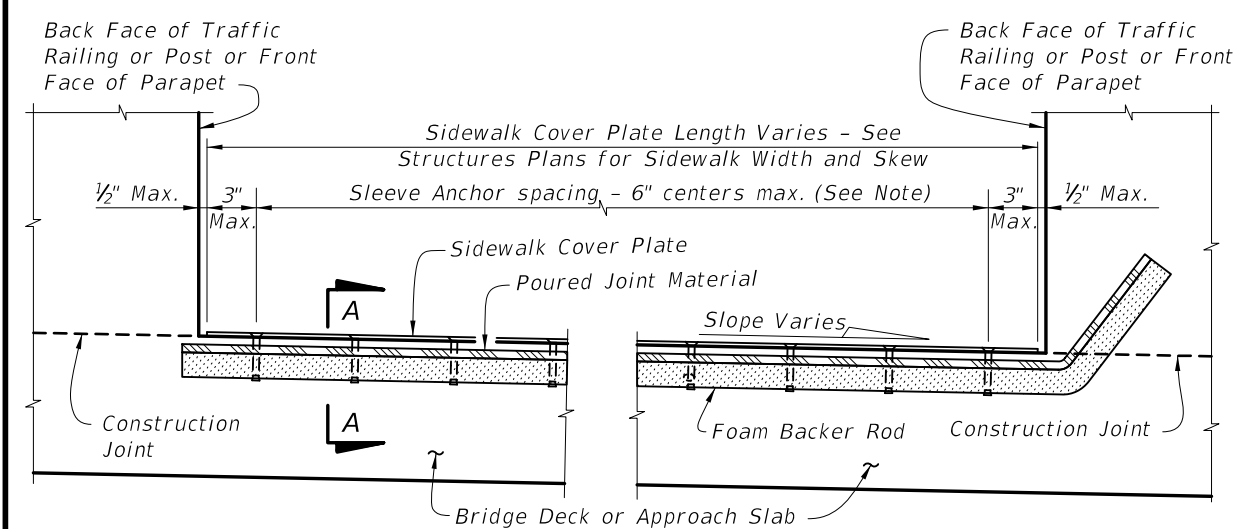
PARTIAL PLAN VIEW OF SKEWED JOINTS



PARTIAL PLAN VIEW

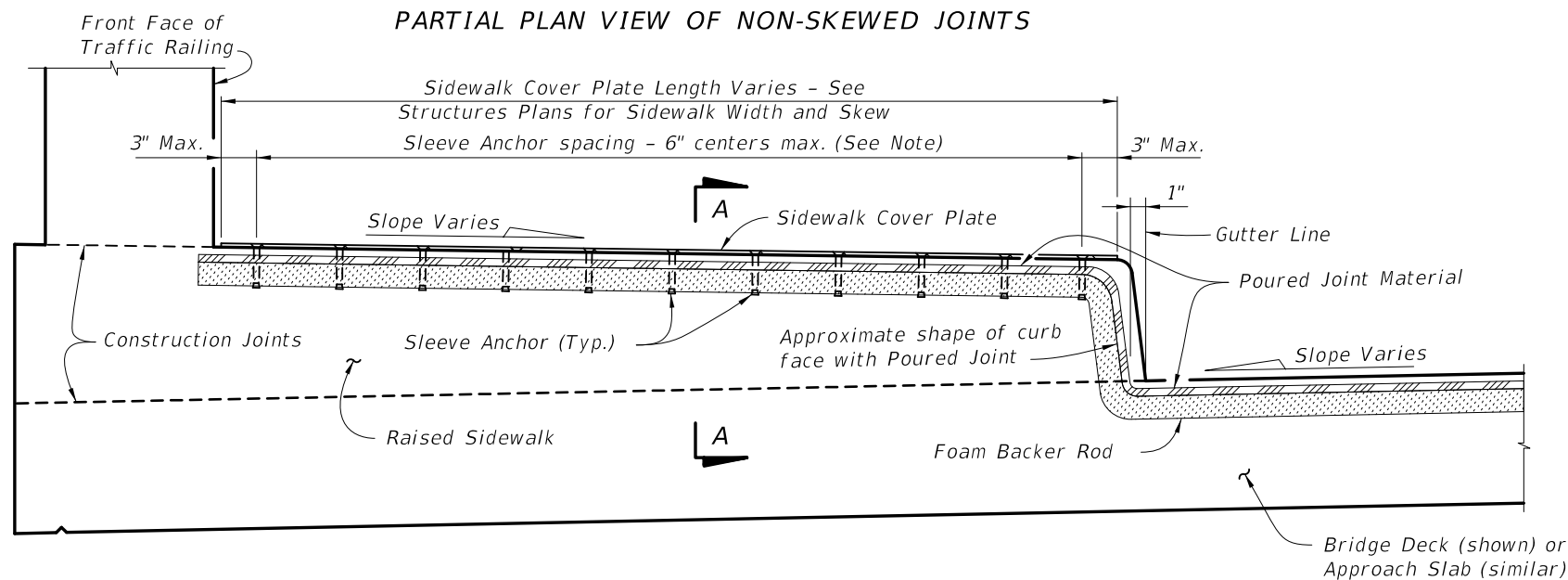


PARTIAL PLAN VIEW OF NON-SKEWED JOINTS



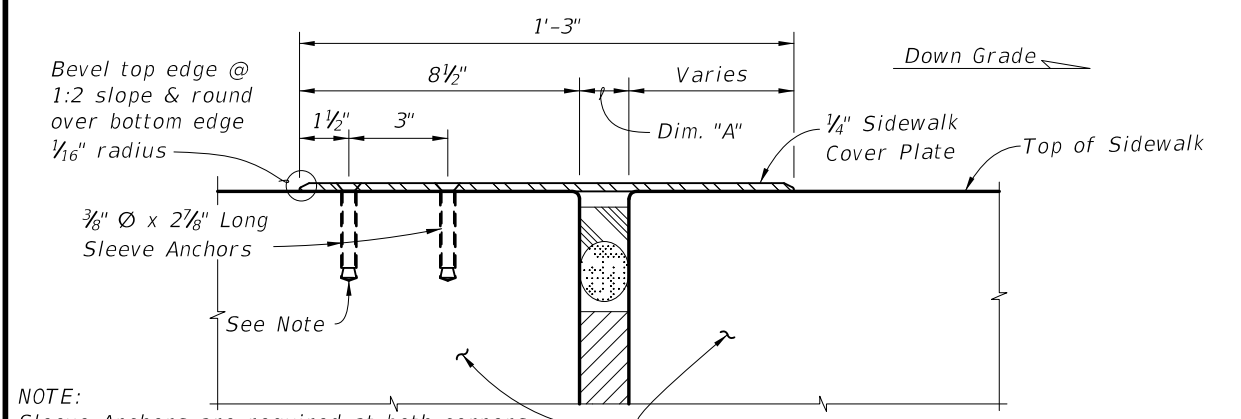
PARTIAL SECTION ALONG Q JOINT

FLUSH SIDEWALK DETAIL



PARTIAL SECTION ALONG Q JOINT

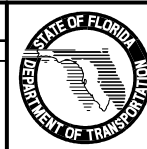
RAISED SIDEWALK DETAIL



NOTE: Sleeve Anchors are required at both corners of Sidewalk Cover Plate. Reduce Sleeve Anchor max. spacing to provide uniform spacing.

SECTION A-A

REVISIONS					
DATE	BY	DESCRIPTION	DATE	BY	DESCRIPTION
01/01/11	SJN	Added Note to Section A-A.			



2010 Interim Design Standard

POURED JOINT WITH BACKER ROD
EXPANSION JOINT SYSTEM

Interim Date	Sheet No.
01/01/11	2 of 2
Index No.	
21110	