

### GENERAL NOTES

1. *TWO-WAY TRAFFIC* sign(s) shall be repeated every  $\frac{1}{4}$  mile in each direction, throughout the tangent distance (T).
2.  $L$  (min.) =  $WS$  for speeds  $\geq 45$  mph  
 $= \frac{WS^2}{60}$  for speeds  $\leq 40$  mph  
 Where:  
 $W$  = Width of lateral transition in feet.  
 $S$  = Posted speed limit (mph).
3. Where the tangent distance (T) exceeds 250', spacing between Type I or II barricades or vertical panels or drums may be increased to 100' within the limits of the tangent, or post mounted delineators at 50' centers may be substituted for barricades, vertical panels or drums.
4. All existing pavement markings within the realignment which conflict with the revised traffic pattern are to be removed and removable pavement markings used for making new edge lines.
5. When side roads, cross roads or interchanges intersects the highway within the TTC zone, additional TTC devices shall be placed in accordance with other applicable TCZ Indexes.
6. For general TCZ requirements and additional information, refer to Index No. 600.




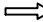
### SCHEME APPLICATIONS

- Scheme 1: *Restricted Construction Limits.*
- Scheme 2: *Unrestricted Construction Limits And Light To Moderate Traffic.*
- Scheme 3: *Unrestricted Construction Limits And Moderate To Heavy Traffic.*

Where: *Construction Limits Are The Outward Beginning Or Ending Of Lane Reductions.*

Where: *Unless A Specific Scheme Is Called For In The Plans, Scheme Selection Shall Be At The Contractor's Option And As Approved By The Engineer.*

### SYMBOLS

-  Sign With 18" x 18" (Min.) Orange Flag And Type B Light
- Channelizing Device (See Index No. 600)
-  Work Zone Sign
-  Advance Warning Arrow Panel
-  Lane Identification + Direction of Traffic

### CONDITIONS

WHERE ANY VEHICLE, EQUIPMENT, WORKERS OR THEIR ACTIVITIES REQUIRE THE CLOSURE OF ONE ROADWAY AND THE OPPOSING ROADWAY IS CONVERTED TO TEMPORARY TWO-WAY TRAVEL BY WAY OF CROSSOVERS.

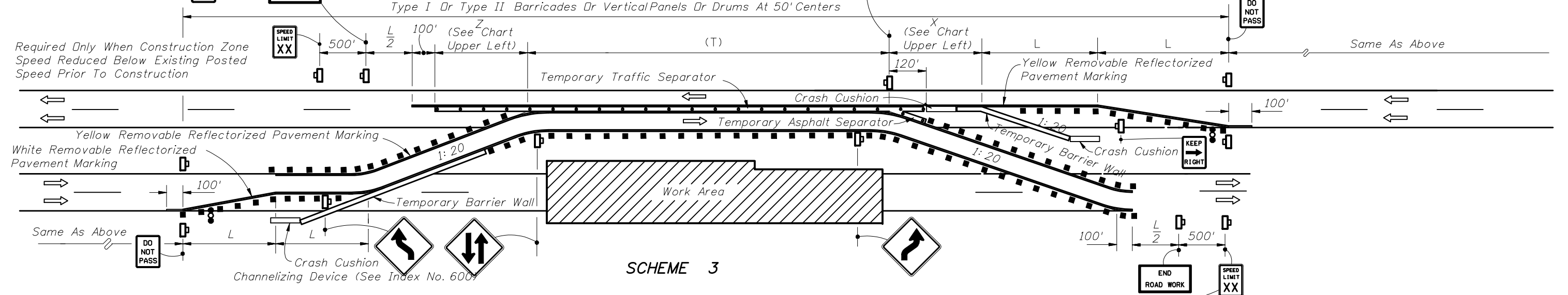
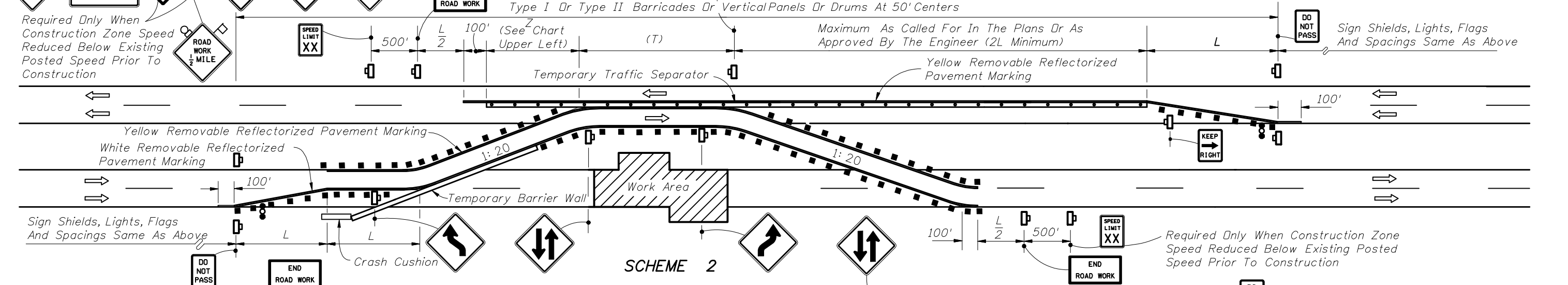
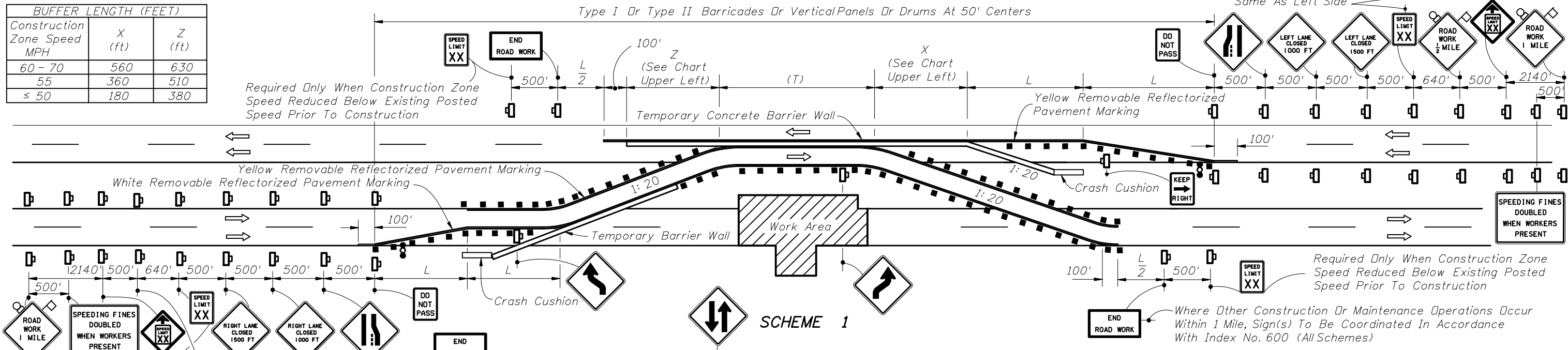


2010 FDOT Design Standards

## MULTILANE DIVIDED, TEMPORARY DIVERSION CONNECTION

Last Revision	Sheet No.
07/01/09	1 of 2
Index No.	
620	

BUFFER LENGTH (FEET)		
Construction Zone Speed MPH	X (ft)	Z (ft)
60-70	560	630
55	360	510
≤ 50	180	380



Note: See Sheet 1 of 2 for Scheme Applications

