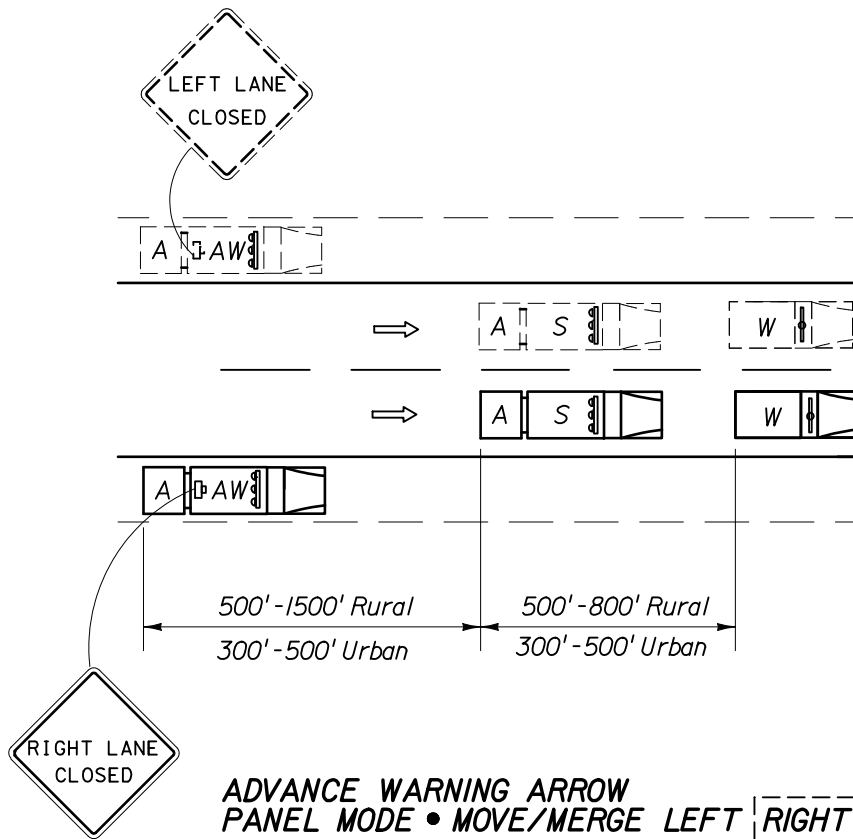


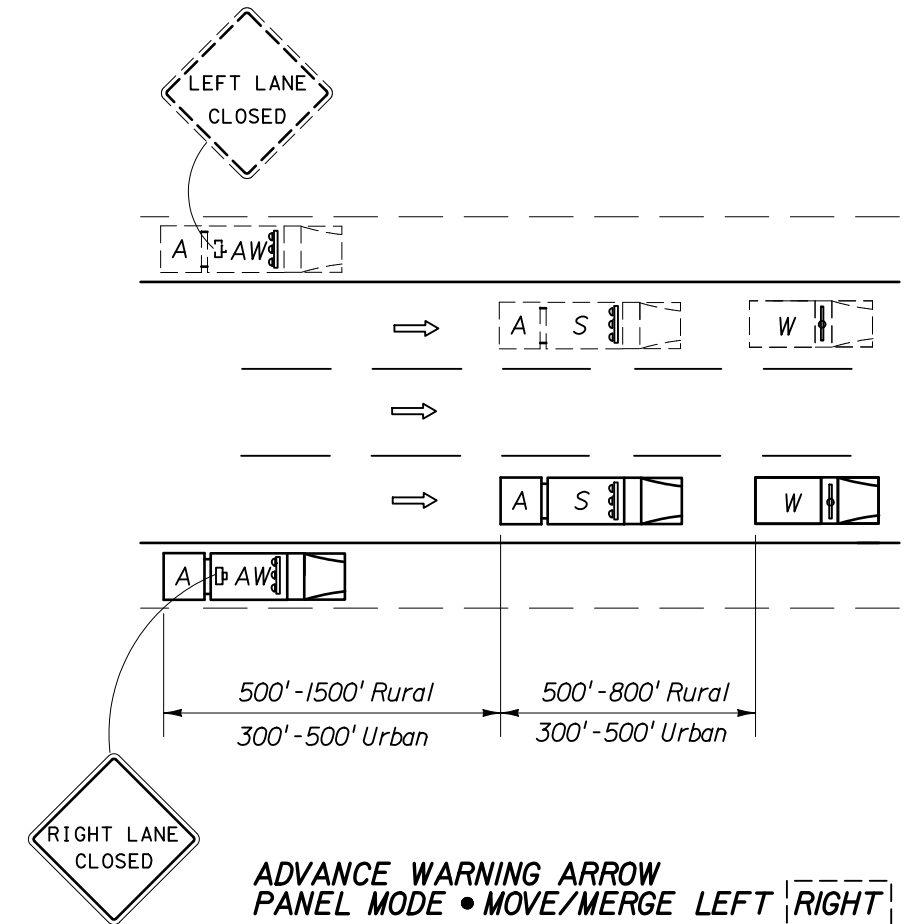
\* The distance between the advance warning sign and the work location should not exceed 5 miles.

## WORK ON SHOULDER



**ADVANCE WARNING ARROW  
PANEL MODE • MOVE/MERGE LEFT [RIGHT]**

Where adequate shoulder width is not available, the advance warning vehicle may drive in the lane.



**ADVANCE WARNING ARROW  
PANEL MODE • MOVE/MERGE LEFT [RIGHT]**

Where adequate shoulder width is not available, the advance warning vehicle may drive in the lane.

## WORK WITHIN TRAVEL LANE

### GENERAL NOTES

1. These illustrations are representative of general conditions.
2. The intensity of light and position of panels shall be as specified in Index No. 600.
3. Vehicle-mounted signs shall be mounted with the bottom of the sign at a minimum height of 48 inches above the pavement. Sign legends shall be covered or turned from view when work is not in progress.
4. If the work vehicle speed exceeds the minimum legal speed limit on limited access facilities and one half the posted speed limit on other facilities, the engineer in charge may delete requirements for shadow vehicle and attenuators. The work vehicle will be required to have an advance warning arrow panel and sign message.
5. Where work activities within 2' of the edge of travel way are incidental (i.e., Mowing, Litter Removal), the Engineer may delete requirements for signs and the advance warning vehicle provided vehicles in the work area have high-intensity rotating, flashing, oscillating, or strobe lights operating.
6. Shadow and Advance Warning Vehicle shall display rotating/strobe lights.
7. For general TCZ requirements and additional information, refer to Index No. 600.

### SYMBOLS

- Work Vehicle With Rotating/Strobe Lights
- Shadow (S) Or Advance Warning (AW) Vehicle with Advance Warning Arrow Panel and Sign Message
- Truck Mounted Attenuator (TMA)
- Lane Identification And Direction Of Traffic

### CONDITIONS MOVING OPERATION



2008 FDOT Design Standards

**MULTILANE, MOBILE OPERATIONS  
WORK ON SHOULDER, WORK WITHIN THE TRAVEL WAY**

Last Revision	Sheet No.
07/01/05	1 of 1
Index No.	
619	