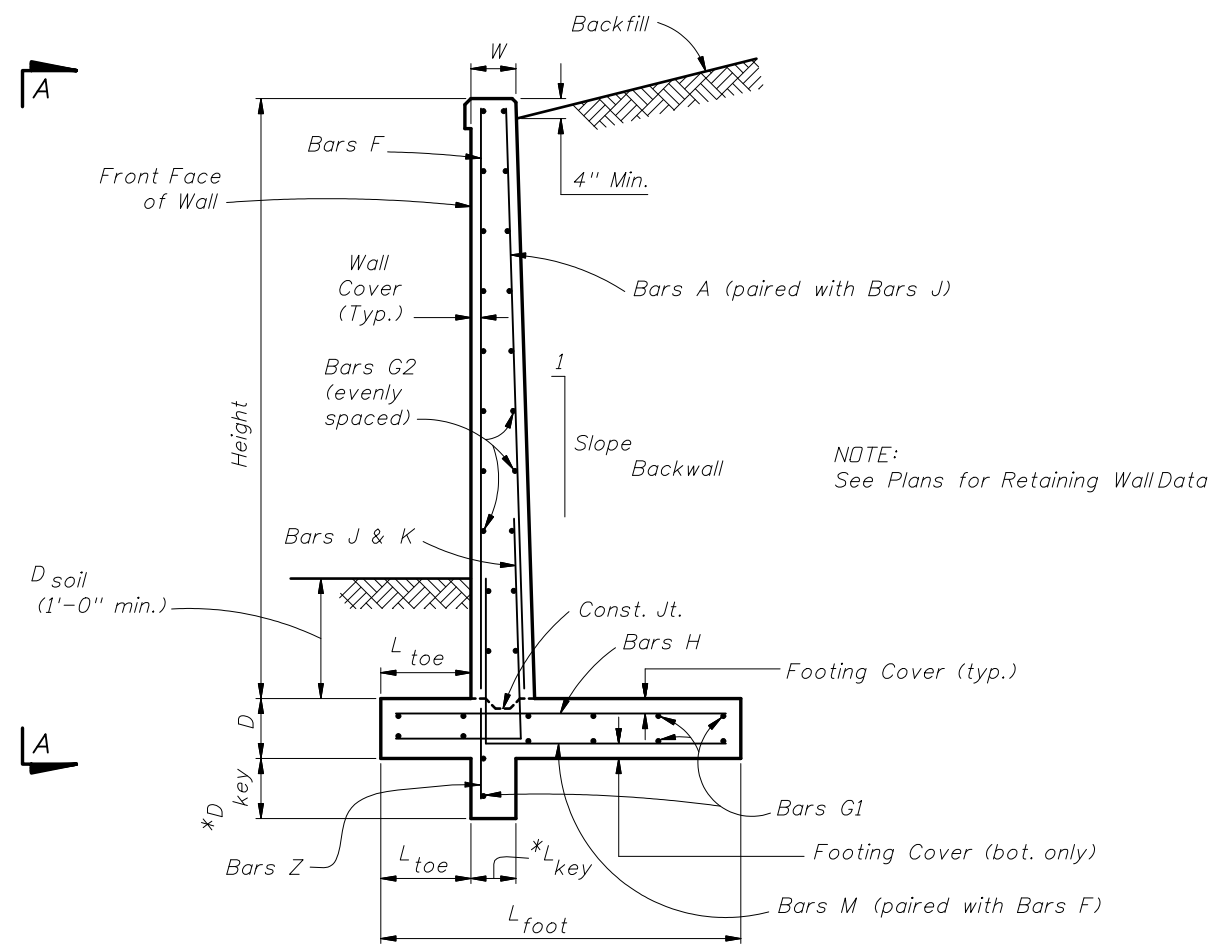


VIEW A-A
(Shear key not shown)

NOTES

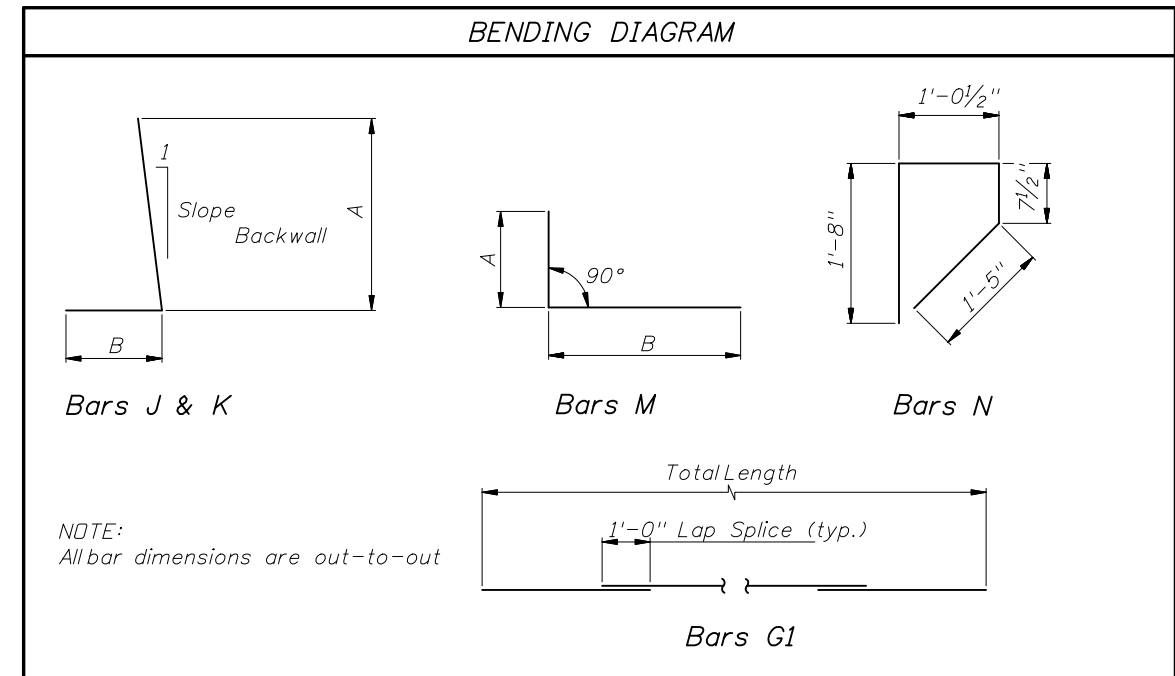
- DESIGN SPECIFICATIONS:**
 American Assoc. of State Highway and Transportation Officials (AASHTO) LRFD Bridge Design Specifications (current edition).
 Florida Dept. of Transportation Structures Design Guidelines (current edition).
- MATERIALS:**
 All reinforcing steel shall conform to ASTM A615 Grade 60.
- SURFACE FINISH:**
 A Class 5 Applied Finish Coating shall be applied to the top of the wall and the exposed face above ground line.
- ARCHITECTURAL TREATMENT:**
 Alternate Architectural Treatments may be substituted for the Striated Pattern shown when approved by the Engineer.
 Concrete required for Architectural Treatment is not included in the quantities.
- TRAFFIC RAILING BARRIER:**
 If there is a Traffic Railing Barrier on the wall, Wall Joints and Barrier V-Grooves shall align and Wall Expansion Joints and Barrier Open Joints shall align.
- FOUNDATION:** Prepare the soil below the footing in accordance with the requirements for spread footings in Specification Section 455.
- PAYMENT:**
 All Retaining Wall costs, including all miscellaneous costs, shall be paid for at the unit contract price for either Class II, III or IV Concrete (Retaining Walls) (CY) and Reinforcing Steel (Retaining Walls) (LBS).
 Retaining Wall quantities shall not include concrete nor reinf. steel for Traffic Railings.
 Traffic Railing (including Bars 5V) shall be paid for under Concrete Traffic Railing (Bridge).



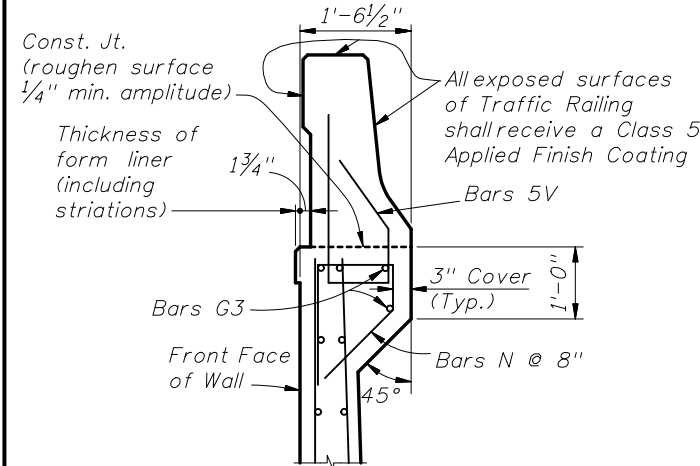
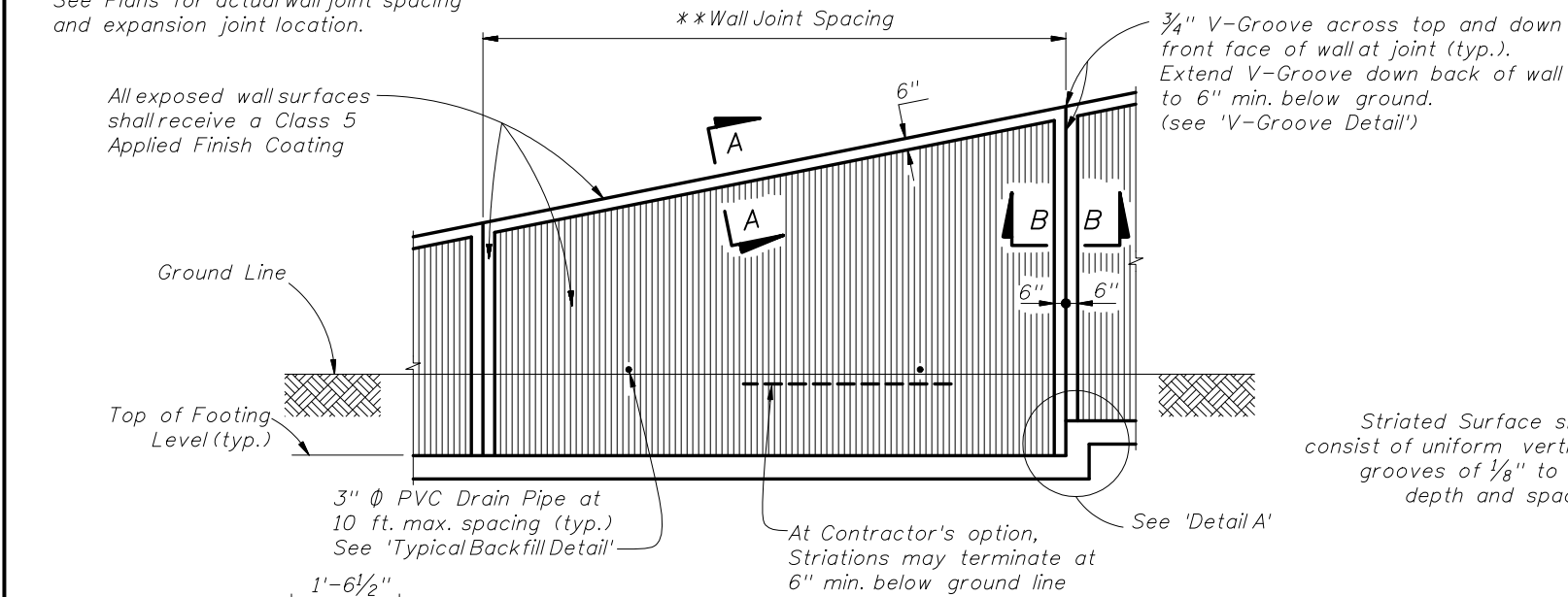
NOTE:
See Plans for Retaining Wall Data

* Shear Key is required only when specified by the Engineer

TYPICAL SECTION

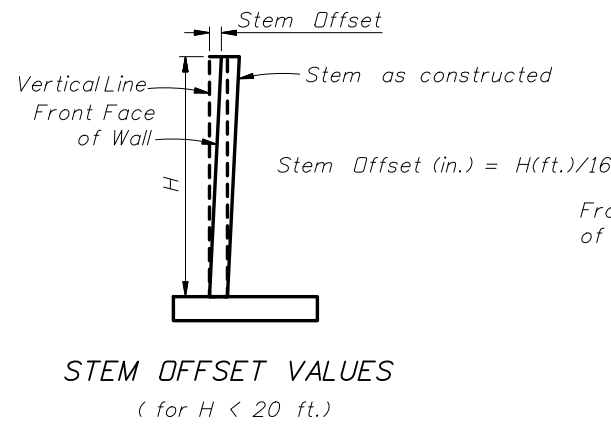


**Wall joint spacing 25 ft. maximum.
At minimum, every fourth wall joint
to be an expansion joint.
See Plans for actual wall joint spacing
and expansion joint location.

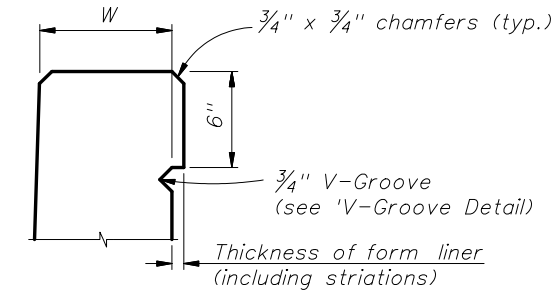


FRONT ELEVATION

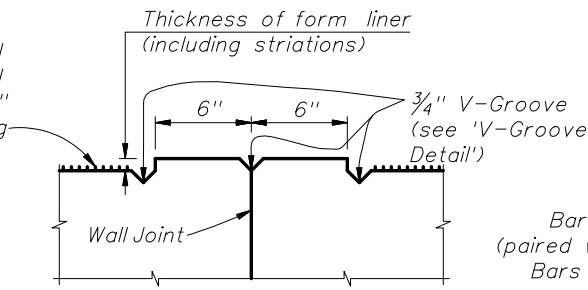
V-GROOVE DETAIL



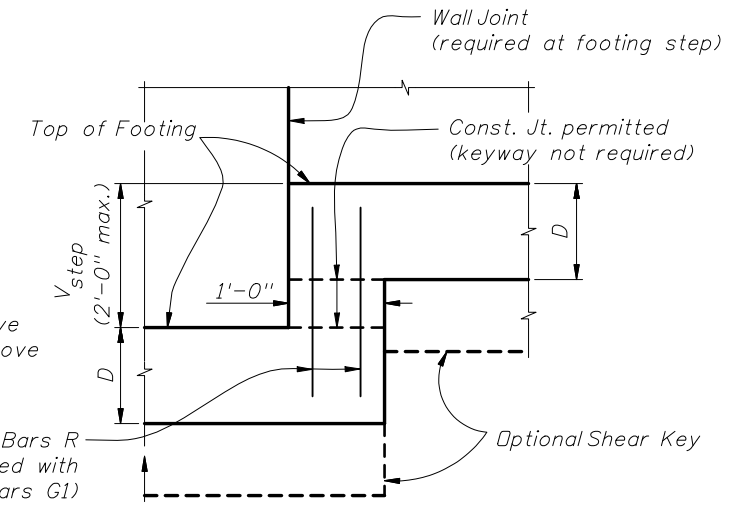
STEM OFFSET VALUES
(for H < 20 ft.)



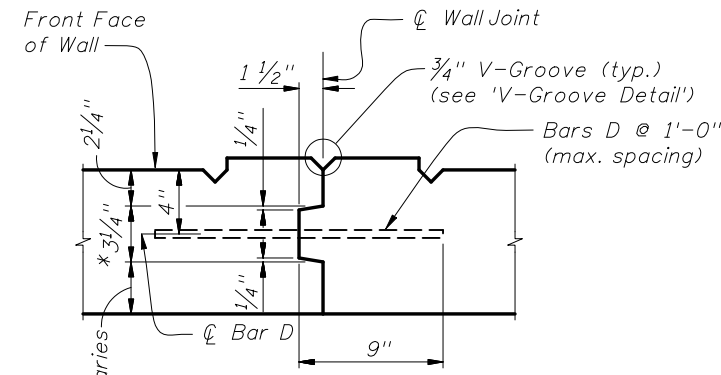
SECTION A-A



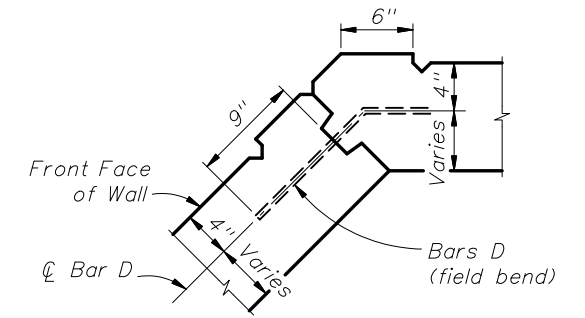
SECTION B-B



DETAIL A

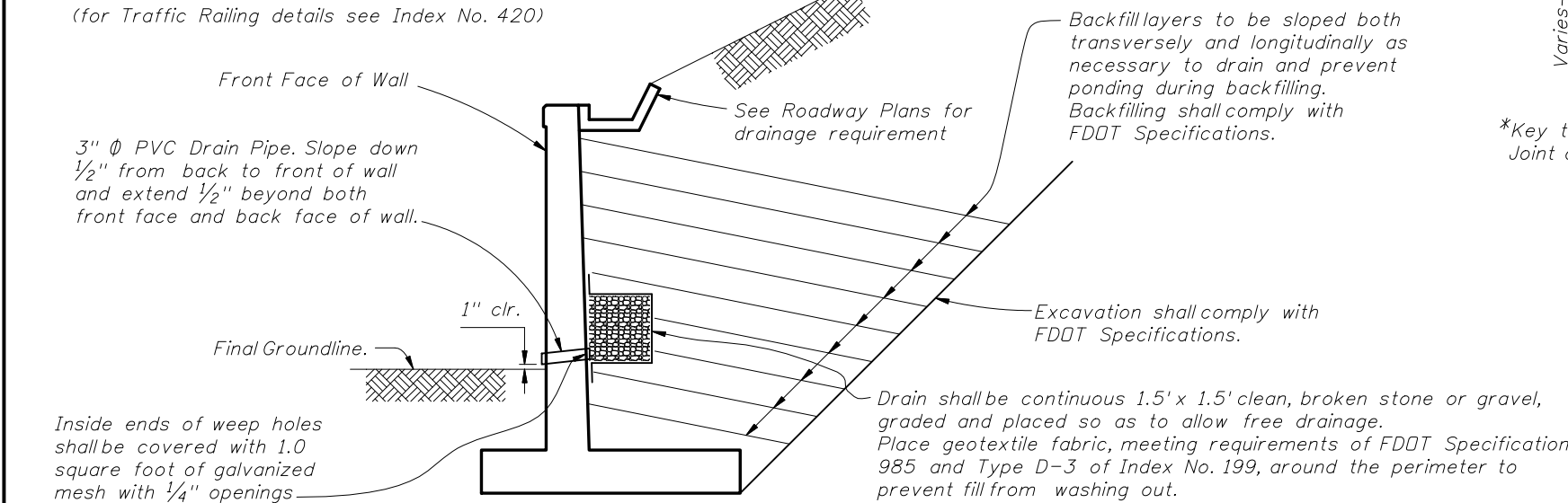


WALL JOINT DETAIL



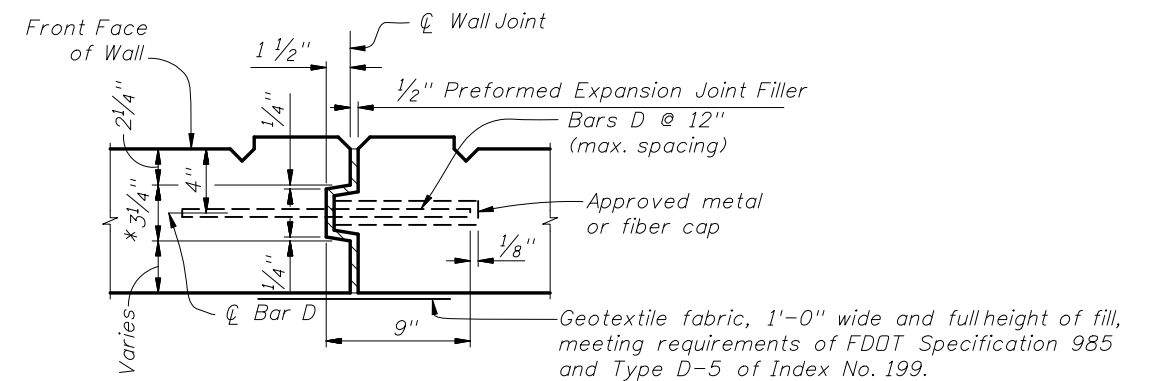
TYPICAL CORNER JOINT DETAIL

TRAFFIC RAILING ON WALL DETAIL
(for Traffic Railing details see Index No. 420)



TYPICAL BACKFILL DETAIL

*Key to stop 6" from top of wall.
Joint across top of wall to be straight line.



EXPANSION JOINT DETAIL

Geotextile fabric, 1'-0" wide and full height of fill, meeting requirements of FDOT Specification 985 and Type D-5 of Index No. 199. Apply an adhesive approved by the Engineer to the back of wall for attachment of fabric material.



2008 FDOT Design Standards

RETAINING WALL - CAST IN PLACE

Last Revision	Sheet No.
07/01/05	2 of 2
Index No.	
5100	