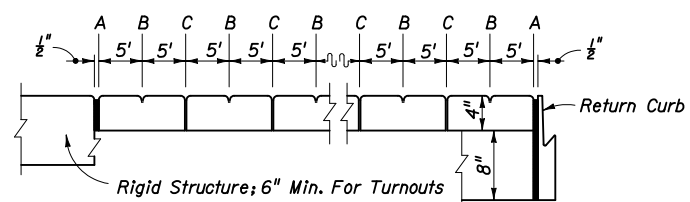


***"E" Joints Required When Length Exceeds 30'
SAWED JOINTS



OPEN JOINTS

EXAGGERATED SCALE
LONGITUDINAL SECTION

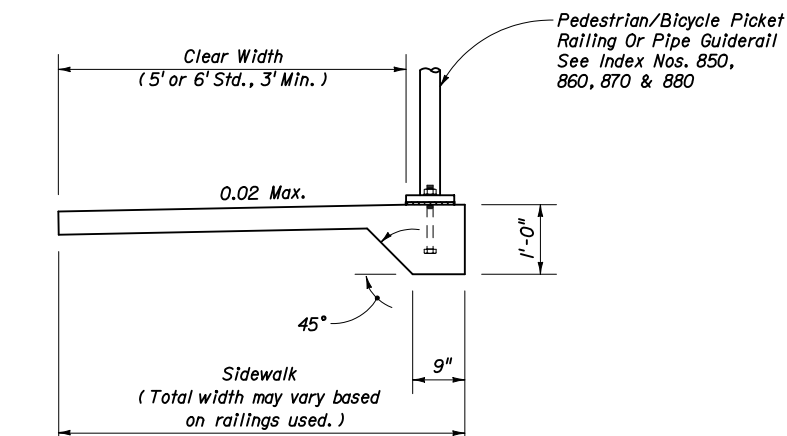
SIDEWALK JOINTS

JOINT LEGEND

- A- $\frac{1}{2}$ " Expansion Joints (Preformed Joint Filler)
- B- $\frac{1}{8}$ " Dummy Joints, Tooled
- C- $\frac{1}{8}$ " Formed Open Joints
- D- $\frac{3}{16}$ " Saw Cut Joints, $1\frac{1}{2}$ " Deep (96 Hour) Max. 5' Centers
- E- $\frac{3}{16}$ " Saw Cut Joints, $1\frac{1}{2}$ " Deep (12 Hour) Max. 30' Centers
- F- $\frac{1}{2}$ " Expansion Joint When Run Of Sidewalk Exceeds 120'. Intermediate locations when called for in the plans or at locations as directed by the Engineer.
- G- Cold Joint With Bond Breaker, Tooled

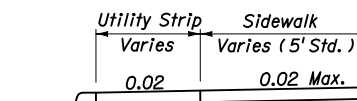
NOTES FOR CONCRETE SIDEWALK ON CURBED ROADWAYS

1. Sidewalks shall be constructed in accordance with Section 522 of the FDOT Standard Specifications except for public sidewalk curb ramp runs which shall be finished in accordance with Index No. 304.
2. Bond breaker material can be any impermeable coated or sheet membrane or preformed material having a thickness of not less than 6 mils nor more than $\frac{1}{2}$ ".
3. For public sidewalk curb ramps see Index No. 304.
4. For turnouts see Index No. 515.
5. Construct sidewalks with 1" thick Edge Beam through the limits of any surface mounted Pedestrian/Bicycle Picket Railing or Pipe Guiderail shown in the plans.
6. Sidewalk shall be paid for under the contract unit price for Sidewalk Concrete (___ Thick), S.Y.

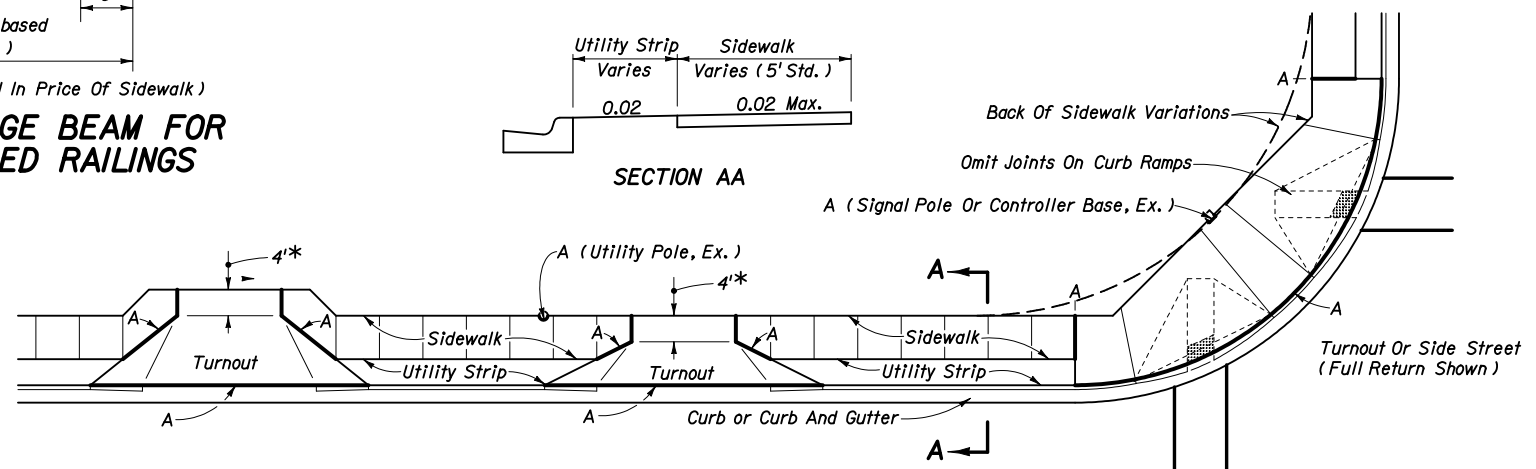


(Cost Of Edge Beam To Be Included In Price Of Sidewalk)

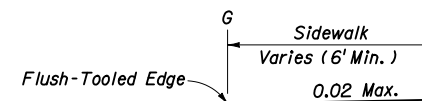
SIDEWALK WITH EDGE BEAM FOR SURFACE MOUNTED RAILINGS



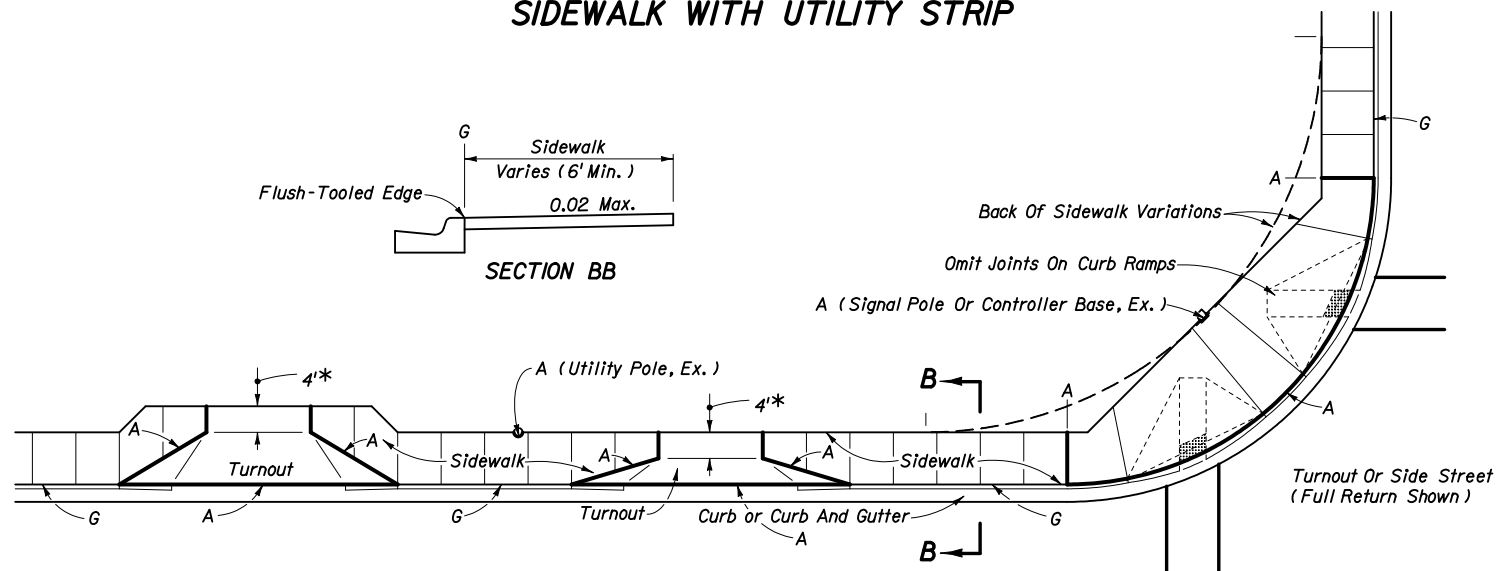
SECTION AA



SIDEWALK WITH UTILITY STRIP



SECTION BB



SIDEWALK WITHOUT UTILITY STRIP

* 4', May Be Reduced To 3' In Restricted Conditions When Approved By The Engineer

CONCRETE SIDEWALK FOR CURBED ROADWAYS



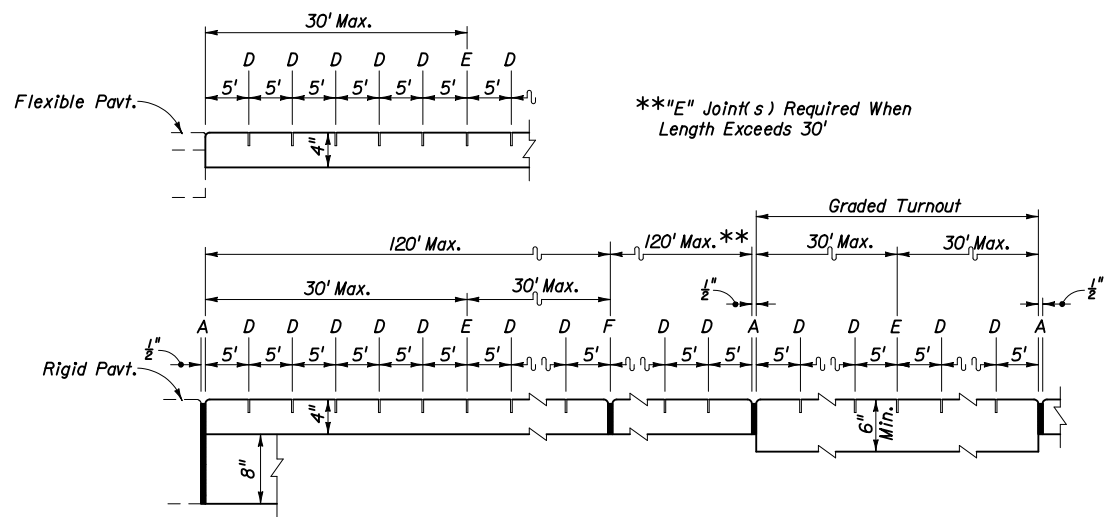
2008 FDOT Design Standards

CONCRETE SIDEWALK

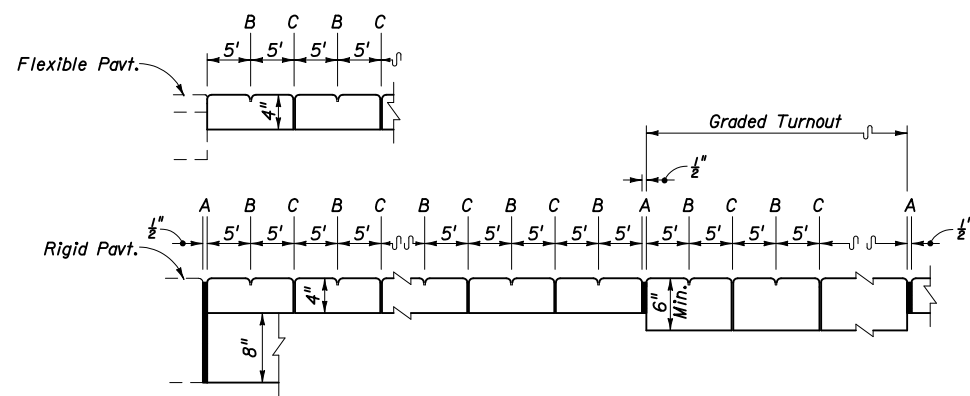
Last Revision
07/01/07

Sheet No.
1 of 2

Index No.
310



SAWED JOINTS



OPEN JOINTS

EXAGGERATED SCALE
LONGITUDINAL SECTIONS
SIDEWALK JOINTS

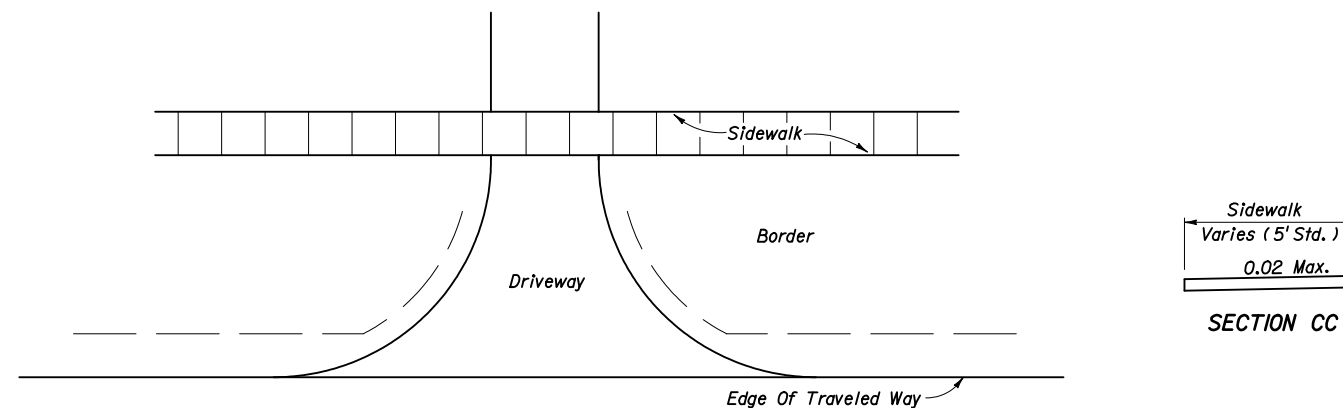
JOINT LEGEND

- A - 1/2" Expansion Joints (Preformed Joint Filler)
- B - 1/8" Dummy Joints, Tooled
- C - 1/8" Formed Open Joints
- D - 3/8" Saw Cut Joints, 1 1/2" Deep (96 Hour) Max. 5' Centers
- E - 3/8" Saw Cut Joints, 1 1/2" Deep (12 Hour) Max. 30' Centers
- F - 1/2" Expansion Joint When Run Of Sidewalk Exceeds 120'. Intermediate locations when called for in the plans or at locations as directed by the Engineer.

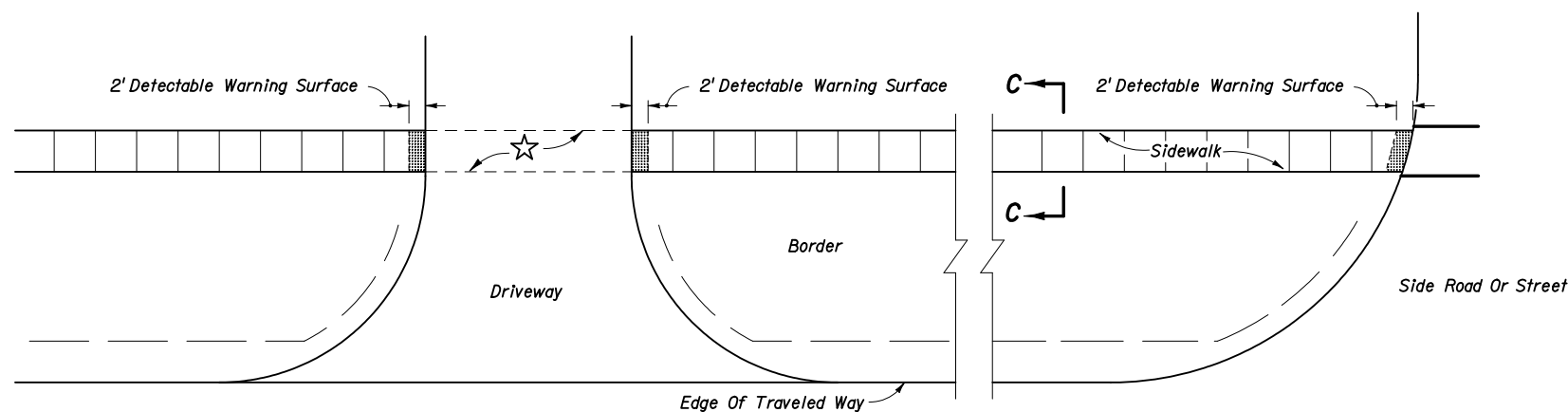
NOTES FOR CONCRETE SIDEWALKS ON UNCURBED ROADWAYS

1. Sidewalks shall be constructed in accordance with Section 522 of the FDOT Standard Specifications.
2. Sidewalks adjoining driveways 24' and wider, right in-right out composite driveways and side roads and streets shall have a detectable warning surface that extends the full width of the sidewalk and 24" (610 mm) from the edge of driveways and edge of side roads and streets. Detectable warning surfaces shall conform to the requirements described in the General Notes on Index No. 304.

For sidewalks continuous through driveways, detectable warning surfaces are not required.
3. For turnouts see Index No. 515.
4. Construct sidewalks with 1" thick Edge Beam through the limits of any surface mounted Pedestrian/Bicycle Picket Railing or Pipe Guiderail shown in the plans. See Sheet 1 for details.
5. Sidewalk shall be paid for under the contract unit price for Sidewalk Concrete (___ Thick), SY.



CONTINUOUS SIDEWALK



DISCONTINUOUS SIDEWALK

PLAN

CONCRETE SIDEWALK FOR UNCURBED ROADWAYS



2008 FDOT Design Standards

CONCRETE SIDEWALK

Last Revision 07/01/07	Sheet No. 2 of 2
Index No. 310	