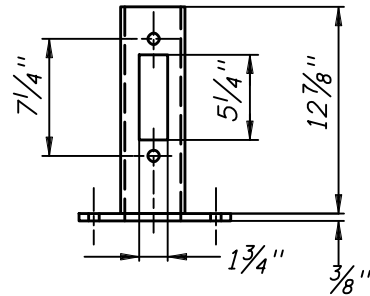


Air Terminal
(See Index 18102)

Tenon Bolted To Pole
So The Rectangular
Openings Are 90°
From The Handhole Boxes

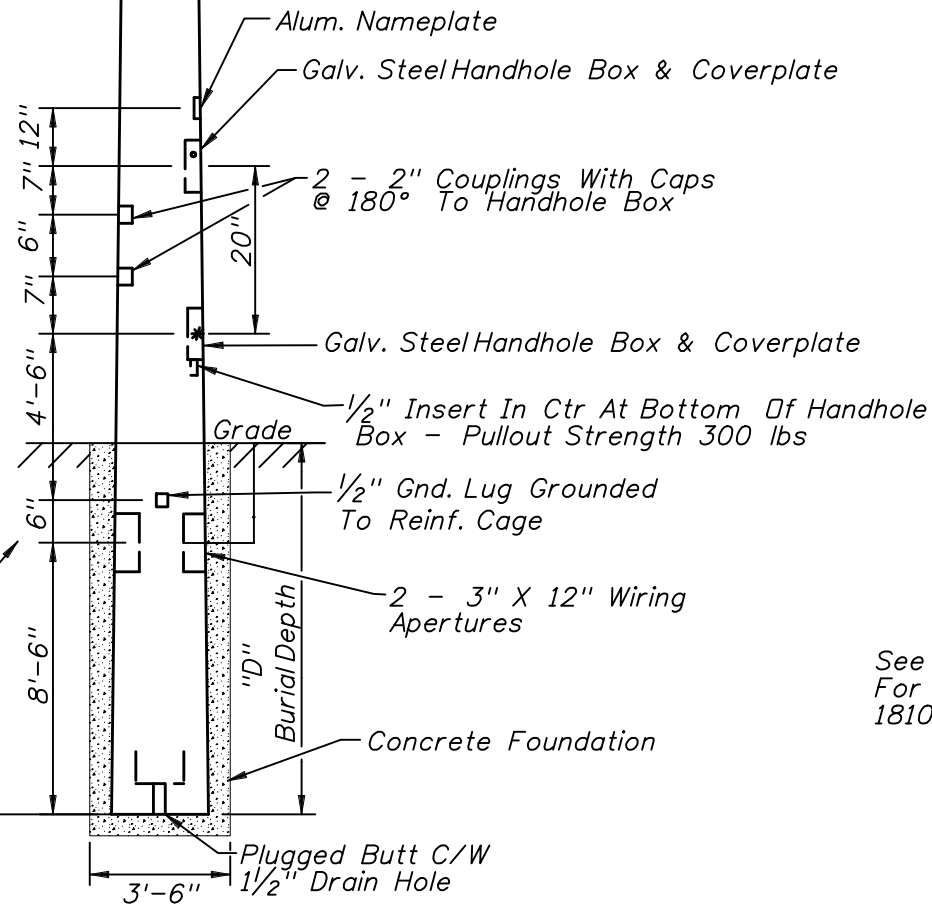
1" Lifting Hole

Plug Top Of Pole With Concrete
A Minimum Depth Of 3"

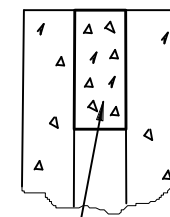


TENON DETAIL

"L"



WITH LOWERING DEVICE



Air Terminal
(See Index 18102)

1" Lifting Hole

1 - 2" Coupling With Cap
@ 180° To Handhole Box

Cabling To Camera
(See Index 18110)

Alum. Nameplate

Galv. Steel Handhole Box & Coverplate

2 - 2" Couplings With Caps
@ 180° To Handhole Box

Galv. Steel Handhole Box & Coverplate

1/2" Insert In Ctr At Bottom
Of Handhole Box - Pullout
Strength 300 lbs.

1/2" Gnd. Lug Grounded
To Reinf. Cage

2 - 3" X 12" Wiring Holes

Concrete Foundation

Plugged Butt C/W
1 1/2" Drain Hole

"L"

7" 12"

6"

7"

4'-6"

6"

8'-6"

3'-6"

20"

1"

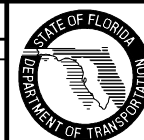
See Index 18102
For Grounding &
18108 For Conduit

WITHOUT LOWERING DEVICE

Not To Scale

REVISIONS

Date	By	Description	Date	By	Description
01/01/06	ITS	New Design Standard Index.			



2006 Interim Design Standard

CONCRETE CCTV POLE

Interim Date	Sheet No.
01/01/06	1 of 2
Index No.	
18113	

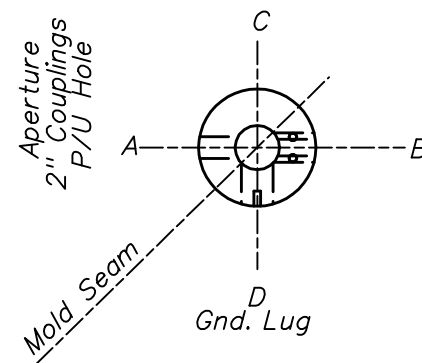
SPECIFICATIONS:

Pole Top:	8/4" Dia.
Pole Butt:	(0.18 X L) + 8 1/4"
Pole Taper:	0.18"
Pole Length:	"L" See Chart
Pole Weight:	"W" See Chart
Defl Spec:	1" Max. In 30 mph (Non-Gust)
Max. Camera EPA:	5.60 Sq. Ft. Total
Max. Camera Wgt:	240 lbs Total

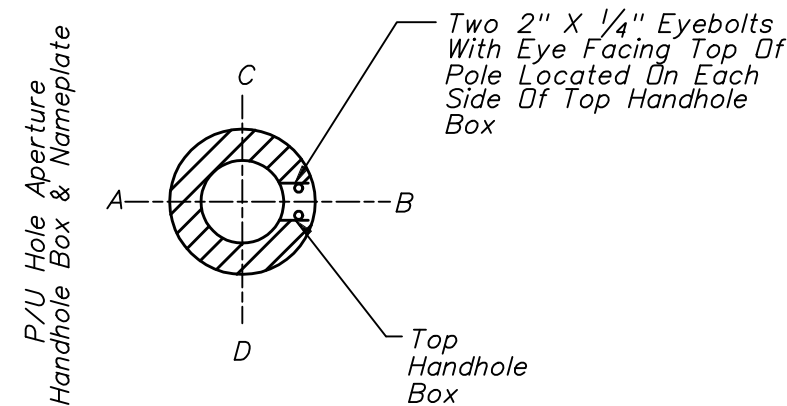
"L"	Pole Class	"W"
25'	G	2,016 lbs
30'	G	2,571 lbs
35'	G	3,179 lbs
41'	G	3,978 lbs
46'	G	4,691 lbs
52'	G	5,630 lbs
57'	G	6,444 lbs
63'	G	7,494 lbs
70'	G	8,750 lbs
75'	G	9,739 lbs
80'	J	11,000 lbs
85'	J	12,113 lbs
90'	J	13,278 lbs

GENERAL NOTES:

1. All cables run shall be secured in a manner that prevents them from interfering with or being damaged by the lowering cable that moves within the pole.
2. Lowering arm shall be mounted perpendicular to the roadway or as directed by the engineer. The CCTV pole shall be positioned so that the dome enclosure can be safely lowered without requiring lane closures.
3. Pole shall include lowering device which includes top J-box, mounting hardware, lowering cable, contact block, waterproof electrical connectors, camera J-box, housing and concrete pole.
4. Design Criteria: Designed in accordance with the 2001 AASHTO Standard Specifications For Structural Supports For Highway Signs, Luminaires and Traffic Signals.
5. The contractor shall submit shop drawings and capacity calculations for the proposed poles, signed and sealed by a professional engineer registered in the state of Florida, to the engineer for review and approval.
6. Burial depth "D" and concrete foundation by engineering design.



TOP VIEW

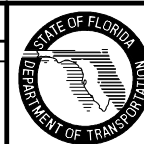


SECTIONAL VIEW
THROUGH TOP
HAND HOLE BOX

Not To Scale

REVISIONS

Date	By	Description	Date	By	Description
01/01/06	ITS	New Design Standard Index.			



2006 Interim Design Standard

CONCRETE CCTV POLE

Interim Date	Sheet No.
01/01/06	2 of 2
Index No.	
18113	