



136 S. Bronough Street
Tallahassee, Florida 32301



800 N. Magnolia Avenue, Suite 1100
Orlando, Florida 32803
(407) 956-5600



1580 Waldo Palmer Lane, Suite 1
Tallahassee, Florida 32308
(850) 921-1119



A message from Governor
Scott on the future of
Florida's Freight and Trade

BRADFORD COUNTY FREIGHT & LOGISTICS OVERVIEW

FLORIDA DEPARTMENT OF TRANSPORTATION

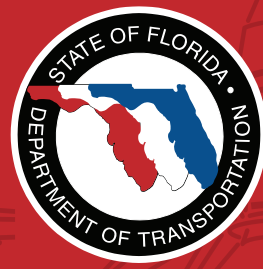
FDOT CONTACTS

Ananth Prasad, P.E.
Secretary of Transportation
Phone (850) 414-5205
Ananth.Prasad@dot.state.fl.us

Juan Flores
Administrator, Freight Logistics &
Passenger Operations
Phone (850) 414-5245
Juan.Flores@dot.state.fl.us

Richard Biter
Assistant Secretary for Intermodal
Systems Development
Phone (850) 414-5235
Richard.Biter@dot.state.fl.us

Greg Evans
District 2, Secretary
Phone (386) 961-7800
Greg.Evans@dot.state.fl.us



Federal Legislative Contacts

United States Senate
Bill Nelson
Phone (202) 224-5274

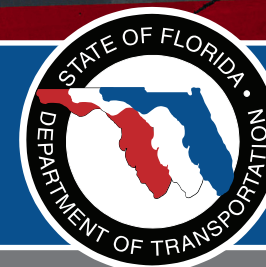
United States Senate
Marco Rubio
Phone (202) 224-3071

US House of Representatives
District 3, Ted Yoho
Phone (202) 225-5744

State Legislative Contacts:

Florida Senate
District 7, Rob Bradley
Phone (850) 487-5007

Florida House of Representatives
District 19, Charles E. VanZant
Phone (850) 717-5019



FDOT MISSION:
THE DEPARTMENT WILL PROVIDE A SAFE TRANSPORTATION SYSTEM THAT ENSURES THE MOBILITY OF PEOPLE AND GOODS, ENHANCES ECONOMIC PROSPERITY AND PRESERVES THE QUALITY OF OUR ENVIRONMENT AND COMMUNITIES.



In recognition of the significant role that freight mobility plays as an economic driver for the state, an Office of Freight, Logistics and Passenger Operations has been created at FDOT. This office has been tasked with meeting the requirements of legislation in Florida House Bill 599, as well as meeting national freight guidance offered in H.R. 4348, the Moving Ahead for Progress in the 21st Century Act (MAP-21).

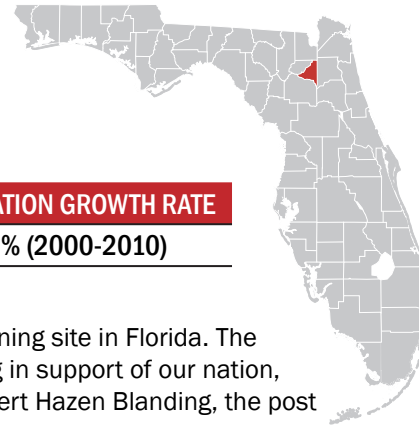
HB599 requires FDOT to lead the development of a plan to "enhance the integration and connectivity of the transportation system across and between transportation modes throughout the state." For this reason, Florida is already on schedule to meet MAP-21 guidelines and has become a leader in freight issues through its ongoing work in developing a Freight Mobility and Trade Plan. For more information, please see www.freightmovesflorida.com.



January 2013

Bradford County

FREIGHT & LOGISTICS OVERVIEW



COUNTY SEAT	LARGEST CITY	AREA	POPULATION	POPULATION GROWTH RATE
Starke, FL	Lawtey, FL	300 square miles	28,520	9.3% (2000-2010)

Primary Economic Development Contact: <http://www.bradford-co-fla.org/>

- Camp Blanding Joint Training Center (CBJTC) near Starke is the National Guard's premier training site in Florida. The 72,000-acre post provides resources to enhance joint, interagency and multinational training in support of our nation, state, and communities. Named after former Chief of the National Guard Bureau Lt. Gen. Albert Hazen Blanding, the post has been an important training site for U.S. military members since World War II.
- Bradford County is the home of the Florida State Prison as well as several other state correctional facilities.
- Starke has been the location of several Hollywood films, including: "G.I. Jane", which was filmed east on Camp Blanding, "Tigerland", and "What's Love Got to do With It".



Top 5 Growing Industries

INDUSTRY	NET JOB CREATION
1. Transportation and Warehousing	148
2. Administrative, Support, Waste Management, and Remediation Services	39
3. Wholesale Trade	15
4. Professional, Scientific, and Technical Services	14
5. Construction	9

Source: Florida Department of Economic Opportunity, Labor Market Statistics Center, LEHD State of Florida County Reports-Quarterly Workforce Indicators 2010-2011.



Largest Industry Sectors by Employment

INDUSTRY SECTORS	% OF WORKFORCE
1. Trade, Transportation, and Utilities	19.0%
2. Education and Health Services	12.5%
3. Leisure and Hospitality	11.3%

Source: Enterprise Florida



Major Private Sector Employers

EMPLOYER	BUSINESS LINE	NUMBER OF EMPLOYEES
1. Du Pont Titanium Technologies	Mining	250
2. Wal-Mart	Retail Sales	250
3. Shands Starke	Hospital	200
4. Bradford Terrace, LLC	Nursing Home/ Rehab	100
5. Davis Express	Long Haul Carrier/ Trucking	100

Source: Enterprise Florida

Florida infrastructure moves 762 million tons of freight traffic annually.

The state highway system sees 195,755 million annual vehicle miles of travel.

Truck travel accounted for approximately 11% of vehicle miles traveled on the SIS in 2010.

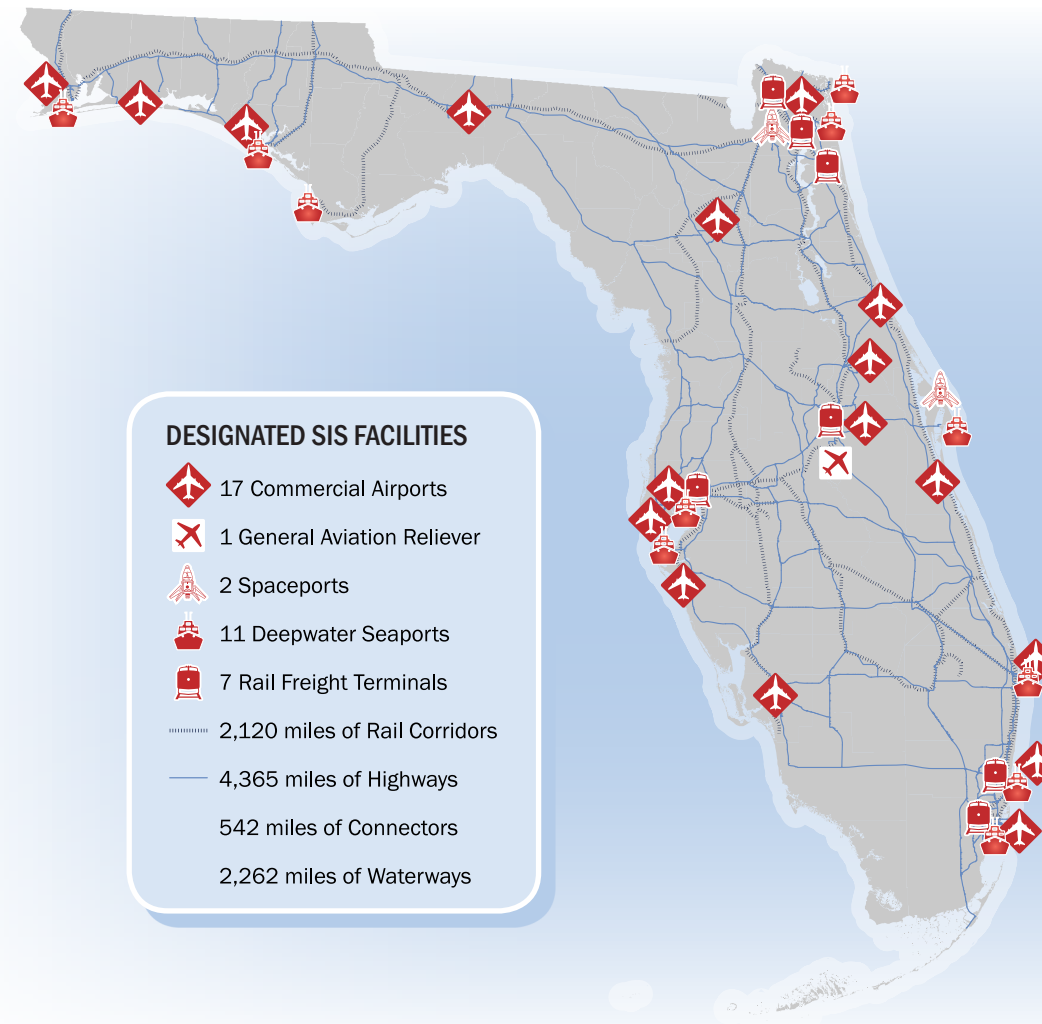
Florida has over 2,700 miles of rail lines, which move over 98 million tons of freight annually.

Florida's Strategic Intermodal System (SIS)

- **Strategic** – Consists of statewide and regionally significant facilities and services
- **Intermodal** – Contains all forms of transportation for moving both people and goods, including linkages for smooth and efficient transfers between modes and major facilities
- **System** – Integrates individual facilities, services, forms of transportation (modes) and linkages into a single, integrated transportation network

The SIS was established to:

- Efficiently serve the mobility needs of Florida's citizens, businesses and visitors
- Help Florida become a worldwide economic leader, enhance economic prosperity and competitiveness, enrich quality of life and reflect responsible environmental stewardship



DESIGNATED SIS FACILITIES

- 17 Commercial Airports
- 1 General Aviation Reliever
- 2 Spaceports
- 11 Deepwater Seaports
- 7 Rail Freight Terminals
- 2,120 miles of Rail Corridors
- 4,365 miles of Highways
- 542 miles of Connectors
- 2,262 miles of Waterways

Florida has 784 aviation facilities, 129 public use, and 19 have commercial service.

The state boasts 2 spaceports and 5 active launch facilities.

Florida's 15 deepwater seaports moved 106.4 million tons of cargo and handled 2.8 million TEU's (20 foot equivalent container unit) in 2010.

Seven of the 15 seaports in Florida carried 12.7 million passengers, 12.1 million of which sailed on multi-day cruises in 2010.

100% of SIS waterborne freight in Florida is on a coastal or international shipping route.

16 Fortune 500 companies have their headquarters in Florida.

Florida

FREIGHT & LOGISTICS OVERVIEW

POPULATION	POPULATION RANK	AREA	AREA RANK	POPULATION GROWTH RATE
18.8 million	4th	53,625 sq. mi.	22nd	17.6% (2000-2010)

Chamber of Commerce website: <http://www.flchamber.org>

Top Employment Sectors

(Nonagricultural Business Groups by Industry)

1. Trade, Transportation, and Utilities
2. Education and Health Services
3. Government Services
4. Professional and Business Services
5. Healthcare and Social Assistance
6. Leisure and Hospitality

Source: Department of Economic Opportunity-Current Employment Statistics (2012)

Top Business Sector Initiatives for Retention and Promotion

1. Clean Energy
2. Information Technology
3. Life Sciences
4. Aviation/ Aerospace
5. Homeland Security/ Defense
6. Financial/ Professional Services

Source: Florida Chamber of Commerce

Top International Trade Partners

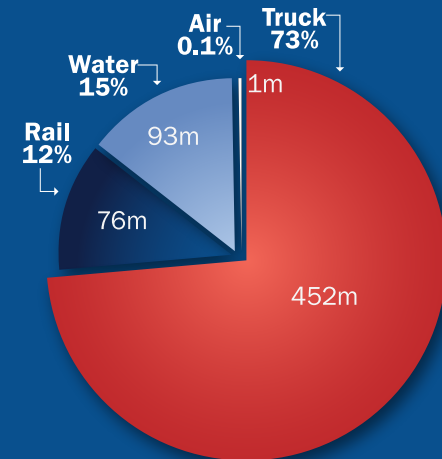
The state of

Florida is a major international hub accounting for approximately \$149 billion in international trade activity in 2011.

EXPORTS		IMPORTS	
1. Switzerland		1. China	
2. Brazil		2. Mexico	
3. Venezuela		3. Japan	
4. Canada		4. Canada	
5. Colombia		5. Colombia	

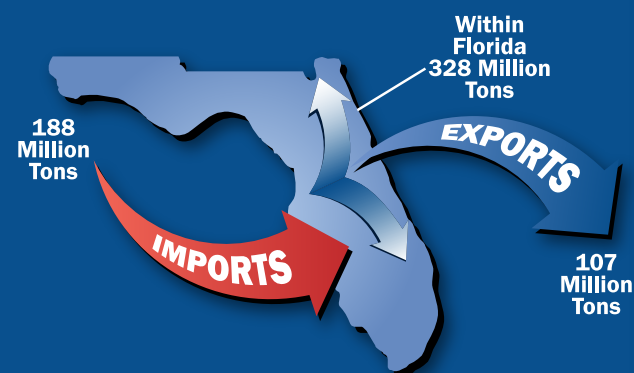
Source: Trade & Logistics Study, Florida Chamber 2009

DOMESTIC AND INTERNATIONAL MODAL MIX (millions of tons)



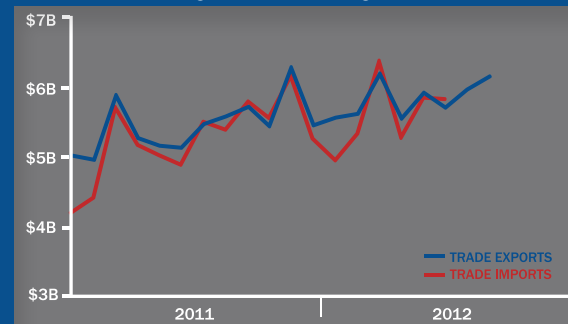
Source: Trade & Logistics Study, Florida Chamber 2009

TOTAL FREIGHT FLOWS



Source: Trade & Logistics Study, Florida Chamber 2009

FLORIDA TRADE ACTIVITY



Key Transportation and Freight Facilities

STRATEGIC INTERMODAL SYSTEM (SIS) HIGHWAYS		US 301, SR 100
SIS RAILROADS		CSX
SIS AIRPORTS		Gainesville Regional Airport
SEAPORTS		Jacksonville Port Authority
NON SIS STATE HIGHWAYS		SR 16, SR 18, SR 230
GENERAL AVIATION AIRPORTS		Keystone Airpark



Top Imports

INBOUND FREIGHT	TRUCK TONNAGE
1. Bulk Movement in Boxcars	66,702
2. Nonmetallic Minerals	61,990
3. Food or Kindred Products	45,859
4. Clay, Concrete, Glass or Stone	20,435
5. Farm Products	13,532

Source: IHS Global Inc.'s Transearch, 2011

Top Exports

OUTBOUND FREIGHT	TRUCK TONNAGE
1. Lumber or Wood Products	63,502
2. Bulk Movement in Boxcars	61,682
3. Farm Products	50,730
4. Metallic Ores	26,865
5. Waste or Scrap Materials	9,682

Source: IHS Global Inc.'s Transearch, 2011



Top Trading Partners

IMPORTS	TRUCK TONNAGE
Columbia County, FL	30,926
Duval County, FL	29,484
Miami-Dade County, FL	22,778
Suwannee County, FL	20,807
Mitchell County, GA	15,265

Source: IHS Global Inc.'s Transearch, 2011

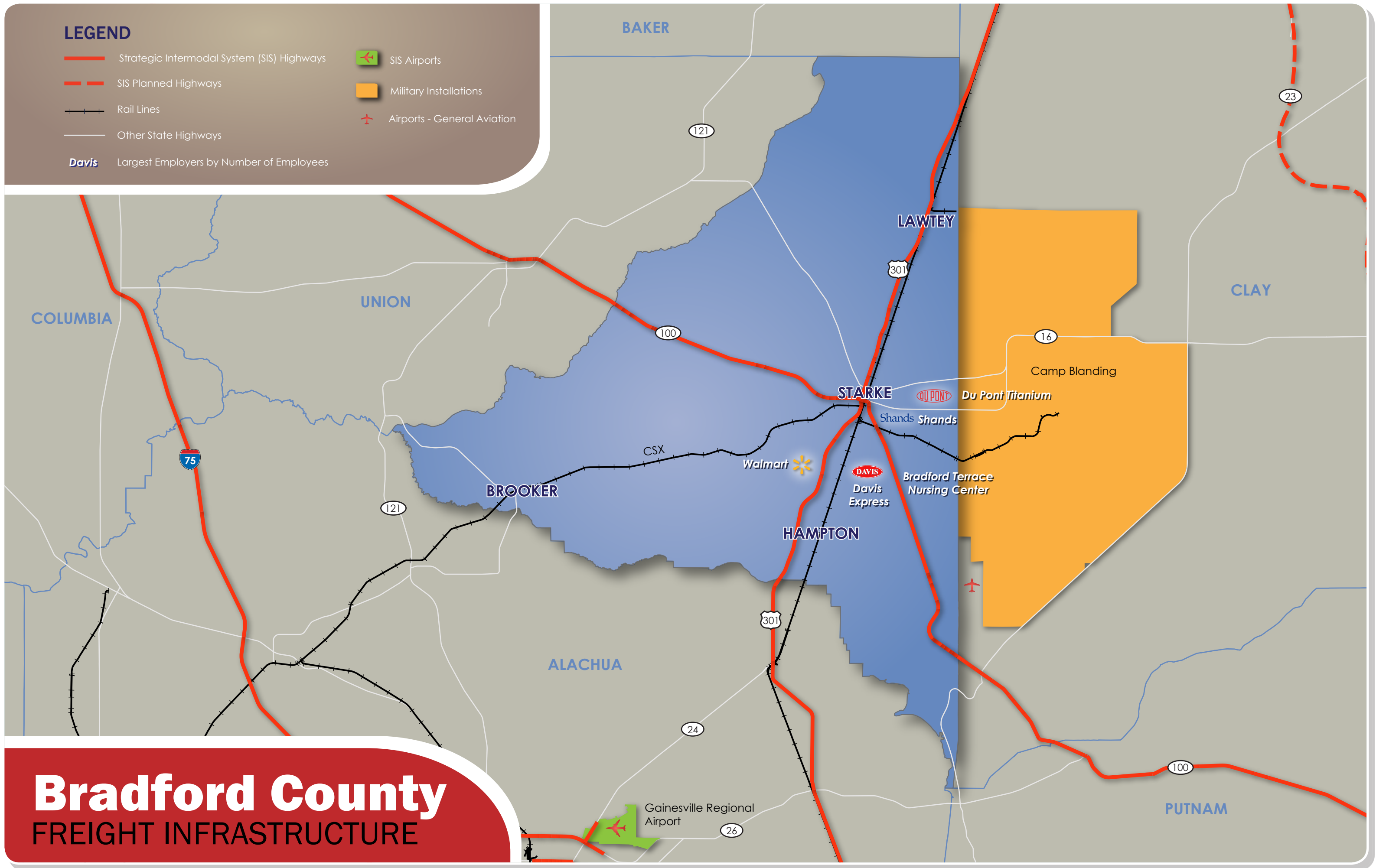
Top Trading Partners

EXPORTS	TRUCK TONNAGE
Orange County, FL	24,495
Duval County, FL	21,865
Union County, NC	15,900
Volusia County, FL	12,464
Cherokee County, AL	12,004

Source: IHS Global Inc.'s Transearch, 2011

LEGEND

- Strategic Intermodal System (SIS) Highways
- SIS Planned Highways
- Rail Lines
- Other State Highways
- Davis** Largest Employers by Number of Employees
- ✈ SIS Airports
- 🏠 Military Installations
- ✈ Airports - General Aviation



Bradford County

FREIGHT INFRASTRUCTURE