

# FREIGHT CONNECTOR

Operational Quick Fixes

FLORIDA  
DEPARTMENT OF TRANSPORTATION



FDOT Systems Planning Office  
Intermodal System Development

FY 2017/18 through FY 2022/23

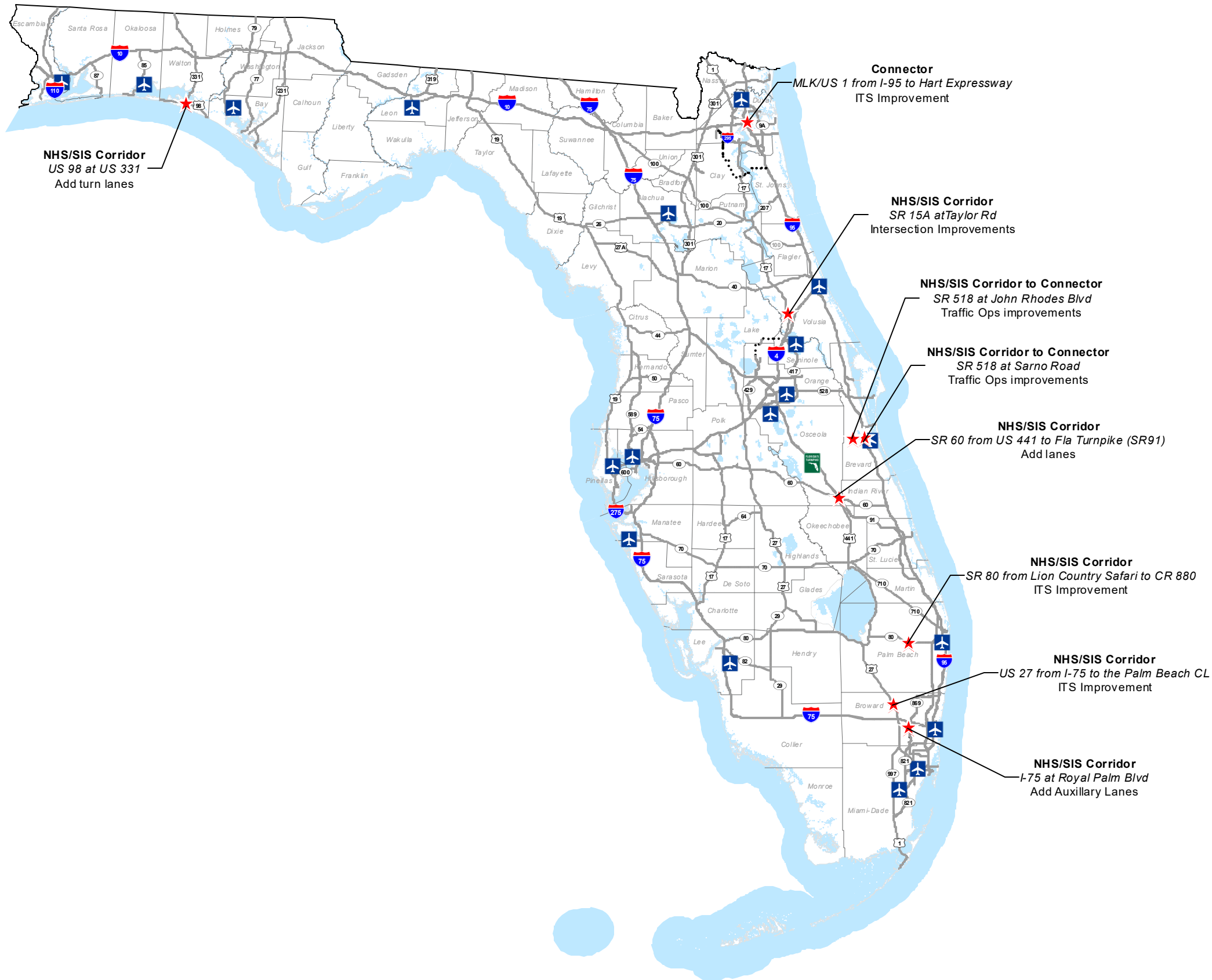


## NHS and SIS Freight Connector Program FY 2017/18 - FY 2022/23 (Operational Quickfix)

District	FM #	NHS/SIS	Hub/Corridor	Facility	Improvement	Ph	FUND	2017/18	2018/19	2019/20	2020/21	2021/22	2022/23
2	4357561	NHS/SIS	Connector	MLK/US 1 from I-95 to Hart Expressway	ITS -Deployment of communication infrastructure	31	DIH				\$35,000		
						32	DI				\$400,000		
						39	DIOH				\$14,969		
						52	ACNP						\$2,189,393
						59	DIOH						\$72,688
						61	ACNP						\$58,191
						62	ACNP						\$370,446
							ACNP						\$136,920
							ACNP						\$28,525
	69	DIOH						\$21,068					
3	4397741	NHS/SIS	Corridor	US 98 at US 331	Add turn lanes	31	ACNP				\$70,000		
						32	ACNP				\$700,000		
						39	DIOH				\$26,677		
						52	ACNP						
						59	DIOH						
						61	ACNP						
						62	ACNP						
	69	DIOH											
4	4215483	NHS/SIS	Corridor	I-75 at Royal Palm Blvd	Add Auxillary Lanes	31	ACNP				\$40,000		
						32	ACNP				\$390,914		
						39	DIOH				\$14,948		
						52	ACNP						\$2,613,751
						59	DIOH						\$86,777
						61	ACNP						\$111,084
						62	ACNP						\$333,254
							62	ACNP					\$39,207
	69	DIOH					\$19,773						
4	4401432	NHS/SIS	Corridor	US 27 from I-75 to the Palm Beach CL	ITS- underground power to connecto to TMC	31	ACNP						
						32	ACNP						
						39	ACNP						
						52	ACNP				\$655,951		
						59	ACNP				\$21,778		
						61	ACNP				\$39,357		
						62	ACNP				\$98,393		
							ACNP				\$10,636		
	69	ACNP			\$6,283								
4	4413441	NHS/SIS	Corridor	SR 80 from Lion Country Safari to CR 880	ITS- install fiber optic cable to connect to TMC	31	ACNP				\$10,000		
						32	ACNP				\$71,518		
						39	DIOH						
						52	ACNP						\$603,851

District	FM #	NHS/SIS	Hub/Corridor	Facility	Improvement	Ph	FUND	2017/18	2018/19	2019/20	2020/21	2021/22	2022/23
						59	DIOH						
						61	ACNP						\$36,231
						62	ACNP						\$90,578
							ACNP						\$9,058
5	4410361	NHS/SIS	Corridor	SR 60 from US 441 to Fla Turnpike (SR91)	Add lanes	31	ACNP	\$20,000					
						32	ACNP	\$500,000					
						39	DIOH	\$17,402					
						52	ACNP				\$3,599,730		
						59	DIOH				\$119,511		
						61	ACNP				\$21,620		
						62	ACNP				\$324,300		
							ACNP				\$86,480		
						69	DIOH				\$14,565		
5	4389682	NHS/SIS	Corridor	SR 15A at Taylor Rd	Intersection Improvements	31	ACNP	\$20,000					
						32	ACNP	\$500,000					
						39	DIOH	\$17,402					
						52	ACNP				\$835,225		
						59	DIOH				\$27,729		
						61	ACNP				\$21,620		
						62	ACNP				\$108,100		
							ACNP				\$54,050		
						69	DIOH				\$6,719		
5	4397791	NHS/SIS	Corridor to Connector	SR 518 at John Rhodes Blvd	Traffic Ops improvements	31	ACNP	\$20,000					
						32	ACNP	\$400,000					
						39	DIOH	\$14,142					
						52	ACNP				\$2,719,104		
						59	DIOH				\$90,274		
						61	ACNP				\$282,798		
						62	ACNP				\$324,300		
							ACNP				\$43,420		
						69	DIOH				\$32,039		
5	4397781	NHS/SIS	Corridor to Connector	SR 518 at Sarno Road	Traffic Ops improvements	31	ACNP	\$20,000					
						32	ACNP	\$500,000					
						39	DIOH	\$17,402					
						52	ACNP				\$2,740,295		
						59	DIOH				\$90,978		
						61	ACNP				\$282,798		
						62	ACNP				\$324,300		
							ACNP				\$43,240		
						69	DIOH				\$32,039		
<b>TOTAL</b>								\$2,046,348	\$0	\$0	\$14,831,658	\$0	\$6,820,795
<b>GRAND TOTAL</b>													\$23,698,801

# NHS and SIS Freight Corridor and Connector Program FY 18-23



## FREIGHT CONNECTORS

### Operational Quick Fix Projects

Statewide

State of Florida Department of Transportation  
Systems Planning Office

---

LEGEND

★

Freight Connector /Corridor  
Operational Quick Fix Projects

---

Source:  
Florida Department of Transportation  
-Systems Planning Office  
-Rail Office

---

**Existing Conditions**

<span style="display: inline-block; width: 20px; height: 2px; background-color: gray; margin-right: 5px;"></span> SIS Highways	<span style="display: inline-block; width: 15px; height: 15px; background-color: lightblue; margin-right: 5px;"></span> Water
<span style="display: inline-block; width: 20px; border-bottom: 2px dashed black; margin-right: 5px;"></span> SIS Corridor Planned Add	<span style="display: inline-block; width: 15px; height: 15px; background-color: orange; margin-right: 5px;"></span> Urban Areas

# FREIGHT CONNECTORS

Operational Quick Fix Projects

## MLK/US 1

State of Florida Department of Transportation  
Systems Planning Office

### LEGEND

#### SIS Hubs

- Airports
- Seaports
- Passenger Terminals
- Passenger Terminals (Planned)
- Spaceport
- Intermodal Freight - Rail Terminals

#### Emerging SIS Hubs

- Airports
- Seaports
- Passenger Terminals
- Intermodal Freight - Rail Terminals

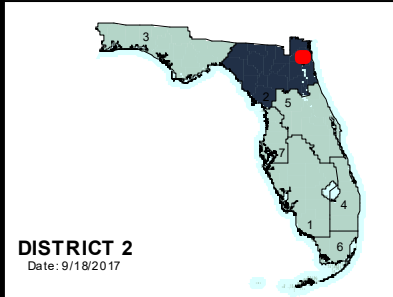
#### Projects

- NHS/SIS Connector Projects

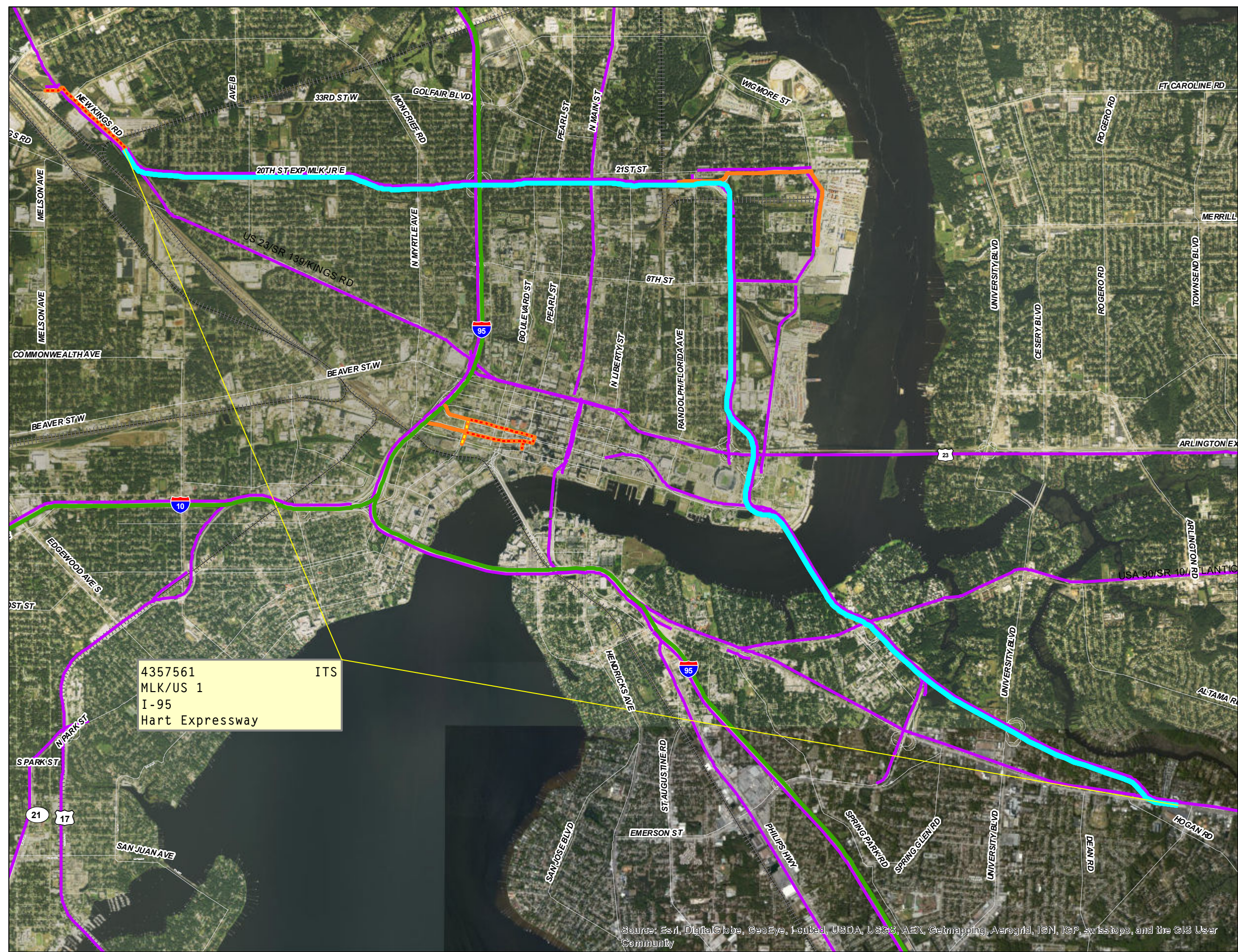
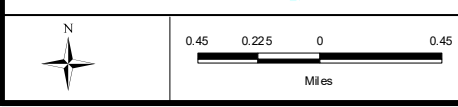
### NHS and SIS Highway System

- SIS Highway Corridor
- SIS Highway Corridor (Planned Add)
- SIS Highway Corridor (Planned Drop)
- Emerging SIS Highway Corridor
- Emerging SIS Highway Corridor (Planned Add)
- Emerging SIS Highway Corridor (Planned Drop)
- SIS Highway Connector
- SIS Highway Connector (Planned Add)
- SIS Highway Connector (Planned Drop)
- SIS Military Access Facility
- SIS Military Access Facility (Planned Add)
- SIS Military Access Facility (Planned Drop)
- NHS

Work Program Item No.	1961143	RE_SUR
Location/Route number	SR 45 (US 41/TAMIAMI TRAIL) AT PINEY POINT RD (PORT MANATEE)	
Limit		

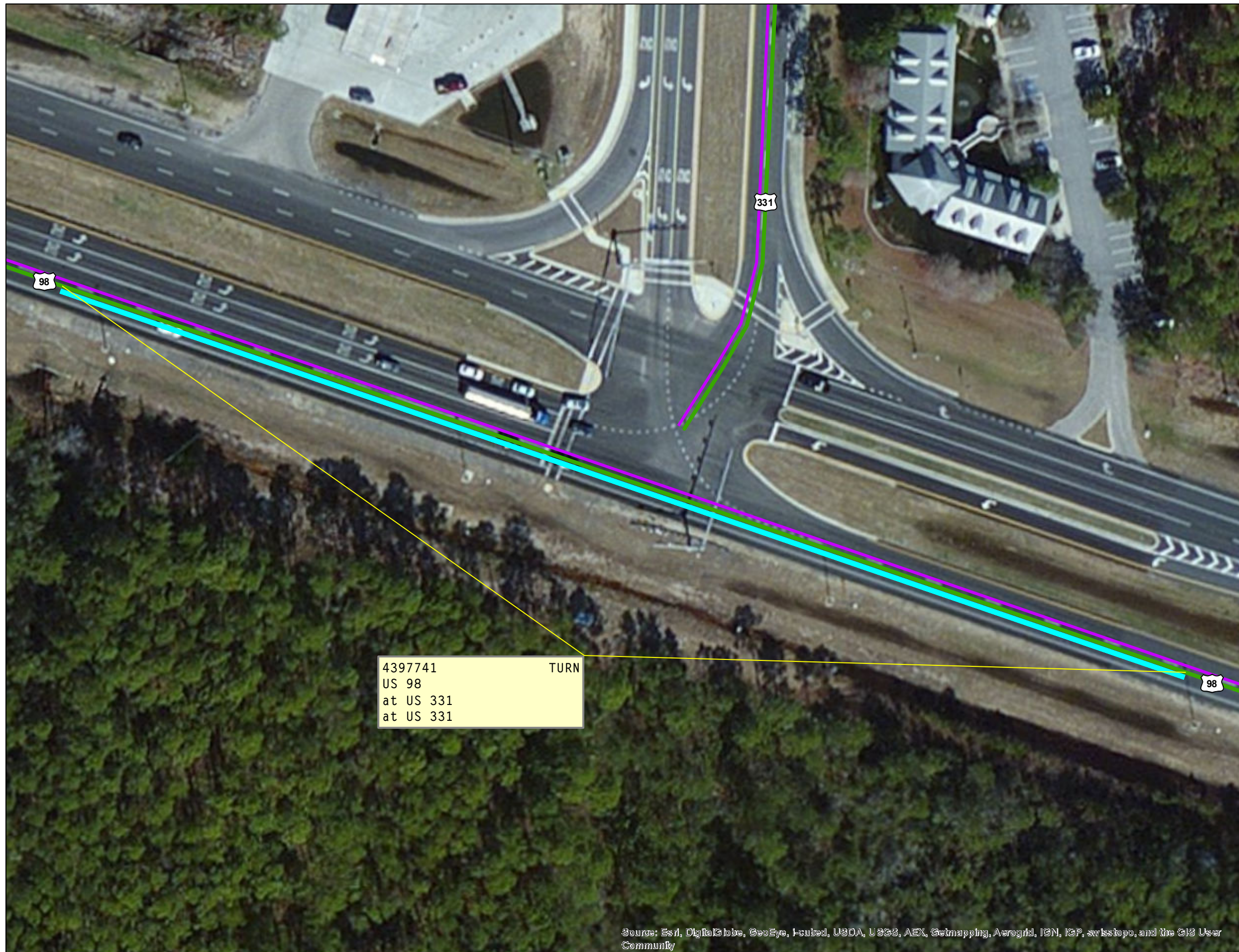


**DISTRICT 2**  
Date: 9/18/2017



4357561 ITS  
MLK/US 1  
I-95  
Hart Expressway

Source: Esri, DigitalGlobe, GeoEye, Earthstar, USDA, USGS, AEX, Getmapping, Aerogrid, IGN, IGP, swisstopo, and the GIS User Community



4397741 TURN  
 US 98  
 at US 331  
 at US 331

Source: Esri, DigitalGlobe, GeoEye, i-cubed, USDA, USGS, AEX, Getmapping, Aerogrid, IGN, IGP, swisstopo, and the GIS User Community

**FREIGHT CONNECTOR**  
 Operational Quick Fix Projects

**US 98 at US 331**  
 Florida Department of Transportation  
 Systems Planning Office

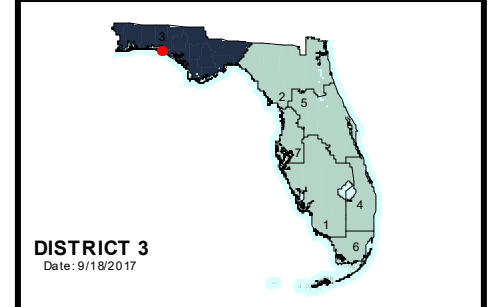
**LEGEND**

- SIS Hubs**
- Airports
  - Seaports
  - Passenger Terminals
  - Passenger Terminals (Planned)
  - Spaceport
  - Intermodal Freight - Rail Terminals
- Emerging SIS Hubs**
- Airports
  - Seaports
  - Passenger Terminals
  - Intermodal Freight - Rail Terminals
- Projects**
- NHS/SIS Connector Projects

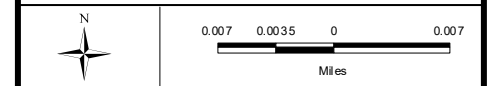
**NHS and SIS Highway System**

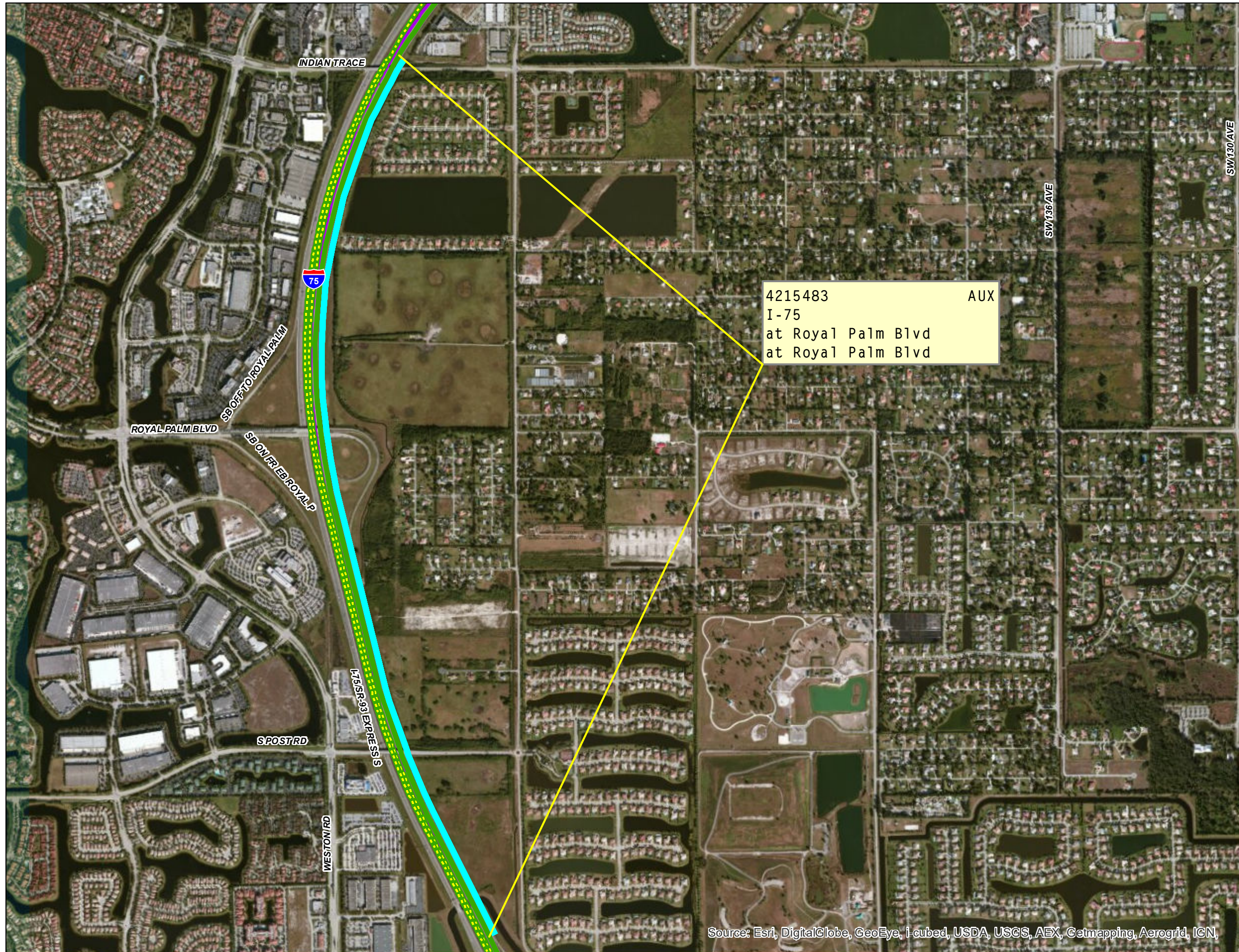
- SIS Highway Corridor
- SIS Highway Corridor (Planned Add)
- SIS Highway Corridor (Planned Drop)
- Emerging SIS Highway Corridor
- Emerging SIS Highway Corridor (Planned Add)
- Emerging SIS Highway Corridor (Planned Drop)
- SIS Highway Connector
- SIS Highway Connector (Planned Add)
- SIS Highway Connector (Planned Drop)
- SIS Military Access Facility
- SIS Military Access Facility (Planned Add)
- SIS Military Access Facility (Planned Drop)
- NHS

Work Program Item No.	1961143	RE_SUR
Location/Route number	SR 45 (US 41/TAMIAMI TRAIL) AT PINEY POINT RD (PORT MANATEE)	
Limit		



**DISTRICT 3**  
 Date: 9/18/2017





Source: Esri, DigitalGlobe, GeoEye, i-cubed, USDA, USGS, AEX, Getmapping, Aerogrid, IGN,

## FREIGHT CONNECTOR

Operational Quick Fix Projects

### I-75 at Royal Palm Blvd

State of Florida Department of Transportation  
Systems Planning Office

---

**LEGEND**

**SIS Hubs**

- Airports
- Seaports
- Passenger Terminals
- Passenger Terminals (Planned)
- Space port
- Intermodal Freight - Rail Terminals

**Emerging SIS Hubs**

- Airports
- Seaports
- Passenger Terminals
- Intermodal Freight - Rail Terminals

**Projects**

- NHS/SIS Connector Projects

---

**NHS and SIS Highway System**

- SIS Highway Corridor
- SIS Highway Corridor (Planned Add)
- SIS Highway Corridor (Planned Drop)
- Emerging SIS Highway Corridor
- Emerging SIS Highway Corridor (Planned Add)
- Emerging SIS Highway Corridor (Planned Drop)
- SIS Highway Connector
- SIS Highway Connector (Planned Add)
- SIS Highway Connector (Planned Drop)
- SIS Military Access Facility
- SIS Military Access Facility (Planned Add)
- SIS Military Access Facility (Planned Drop)

**NHS**

Work Program Item No. 1961143 RE\_SUR

Location/Route number SR 45 (US 41/TAMIAMI TRAIL) AT PINEY POINT RD (PORT MANATEE)

Units (PORT MANATEE)

Improvement Type

**DISTRICT 4**  
Date: 9/18/2017

Miles



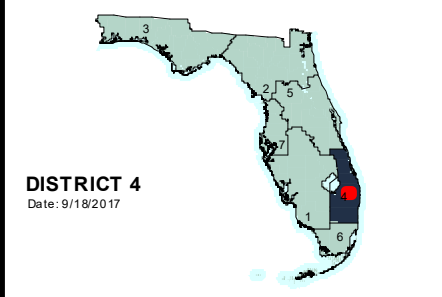
4413441 ITS  
 SR 80  
 Lion Country Safari  
 CR 880

- LEGEND**
- SIS Hubs**
- Airports
  - Seaports
  - Passenger Terminals
  - Passenger Terminals (Planned)
  - Space port
  - Intermodal Freight - Rail Terminals
- Emerging SIS Hubs**
- Airports
  - Seaports
  - Passenger Terminals
  - Intermodal Freight - Rail Terminals
- Projects**
- NHS/SIS Connector Projects

**NHS and SIS Highway System**

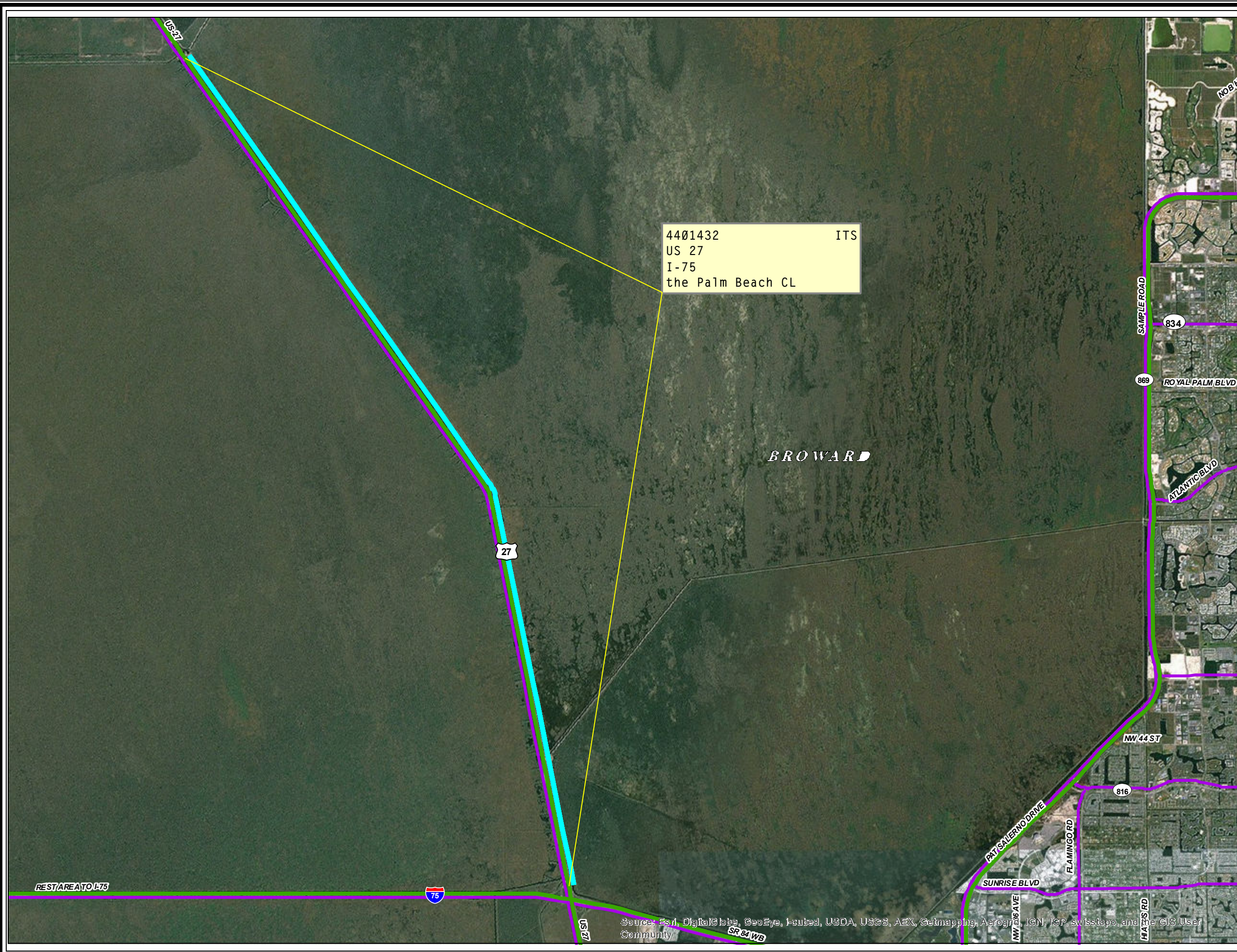
- SIS Highway Corridor
- SIS Highway Corridor (Planned Add)
- SIS Highway Corridor (Planned Drop)
- Emerging SIS Highway Corridor
- Emerging SIS Highway Corridor (Planned Add)
- Emerging SIS Highway Corridor (Planned Drop)
- SIS Highway Connector
- SIS Highway Connector (Planned Add)
- SIS Highway Connector (Planned Drop)
- SIS Military Access Facility
- SIS Military Access Facility (Planned Add)
- SIS Military Access Facility (Planned Drop)
- NHS

Work Program Reseg No.	Location/Route number	Limit	Improvement Type
1961143	SR 45 (US 41/TAMIAMI TRAIL) AT PINEY POINT RD (PORT MANATEE)		RE_SR



Source: Esri, DigitalGlobe, GeoEye, Earthstar, USDA, USGS, AEX, Getmapping, Aerogrid, IGN, IGP, swisstopo, and the GIS User Community





4401432 ITS  
 US 27  
 I-75  
 the Palm Beach CL

**LEGEND**

**SIS Hubs**

- Airports
- Seaports
- Passenger Terminals
- Passenger Terminals (Planned)
- Space port
- Intermodal Freight - Rail Terminals

**Emerging SIS Hubs**

- Airports
- Seaports
- Passenger Terminals
- Intermodal Freight - Rail Terminals

**Projects**

- NHS/SIS Connector Projects

**NHS and SIS Highway System**

- SIS Highway Corridor
- SIS Highway Corridor (Planned Add)
- SIS Highway Corridor (Planned Drop)
- Emerging SIS Highway Corridor
- Emerging SIS Highway Corridor (Planned Add)
- Emerging SIS Highway Corridor (Planned Drop)
- SIS Highway Connector
- SIS Highway Connector (Planned Add)
- SIS Highway Connector (Planned Drop)
- SIS Military Access Facility
- SIS Military Access Facility (Planned Add)
- SIS Military Access Facility (Planned Drop)

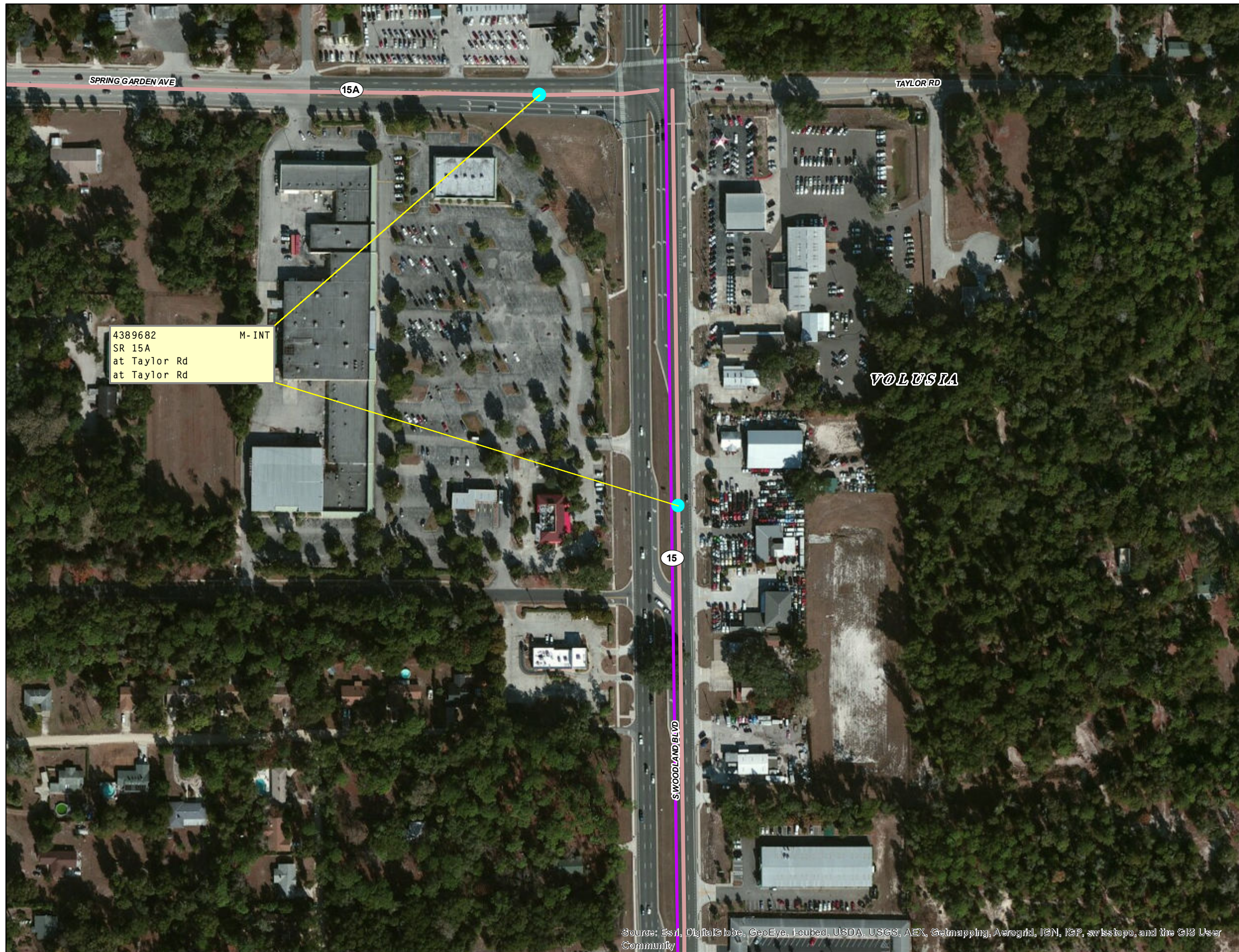
**NHS**

Work Program Item No: 1961143 RE\_SBR  
 Location/Route number: SR 45 (US 41/TAMIAMI TRAIL) AT PINEY POINT RD (PORT MANATEE)  
 Limits: (PORT MANATEE)

**DISTRICT 4**  
 Date: 9/18/2017

0.9 0.45 0 0.9  
 Miles

Source: Esri, DigitalGlobe, GeoEye, Earthstar, USDA, USGS, AEX, Getmapping, Aerogrid, IGN, IGP, swisstopo, and the GIS User Community



4389682 M-INT  
 SR 15A  
 at Taylor Rd  
 at Taylor Rd

**FREIGHT CONNECTORS**  
 Operational Quick Fix Projects

**SR 15A at Taylor Rd**  
 Florida Department of Transportation  
 Systems Planning Office

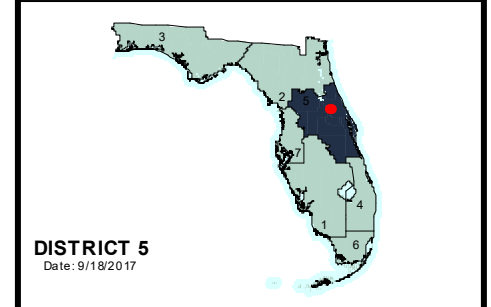
**LEGEND**

- SIS Hubs**
- Airports
  - Seaports
  - Passenger Terminals
  - Passenger Terminals (Planned)
  - Spaceport
  - Intermodal Freight - Rail Terminals
- Emerging SIS Hubs**
- Airports
  - Seaports
  - Passenger Terminals
  - Intermodal Freight - Rail Terminals
- Projects**
- NHS/SIS Connector Projects

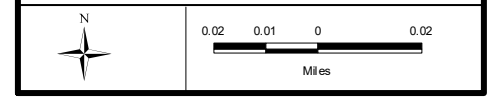
**NHS and SIS Highway System**

- SIS Highway Corridor
- SIS Highway Corridor (Planned Add)
- SIS Highway Corridor (Planned Drop)
- Emerging SIS Highway Corridor
- Emerging SIS Highway Corridor (Planned Add)
- Emerging SIS Highway Corridor (Planned Drop)
- SIS Highway Connector
- SIS Highway Connector (Planned Add)
- SIS Highway Connector (Planned Drop)
- SIS Military Access Facility
- SIS Military Access Facility (Planned Add)
- SIS Military Access Facility (Planned Drop)
- NHS

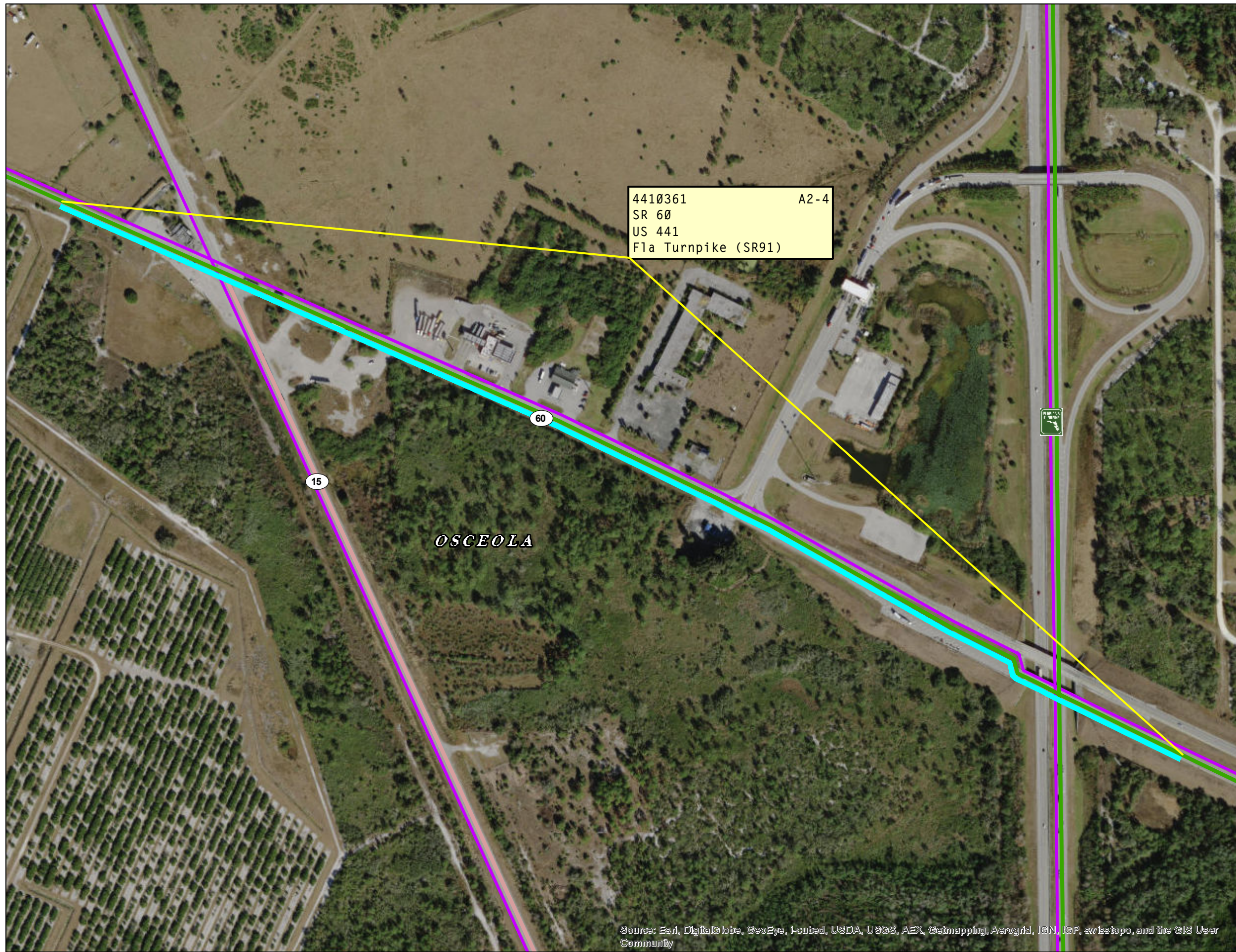
Work Program Name No.	1961143	RE_SUR
Location/Route number	SR 45 (US 41/TAMIAMI TRAIL) AT PINEY POINT RD (PORT MANATEE)	
Limit		



**DISTRICT 5**  
 Date: 9/18/2017



Source: Esri, DigitalGlobe, GeoEye, i-cubed, USDA, USGS, AEX, Getmapping, Aerogrid, IGN, IGP, swisstopo, and the GIS User Community



4410361 A2-4  
 SR 60  
 US 441  
 Fla Turnpike (SR91)

**FREIGHT CONNECTORS**  
 Operational Quick Fix Projects

SR 60 at Fla Turnpike (SR91)  
 State of Florida Department of Transportation  
 Systems Planning Office

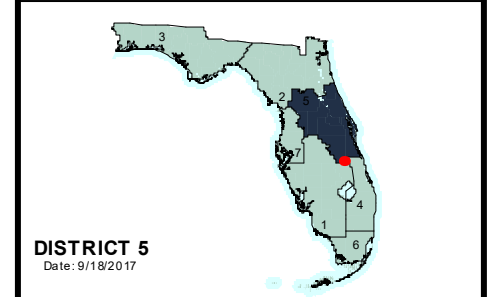
LEGEND

- SIS Hubs**
- Airports
  - Seaports
  - Passenger Terminals
  - Passenger Terminals (Planned)
  - Spaceport
  - Intermodal Freight - Rail Terminals
- Emerging SIS Hubs**
- Airports
  - Seaports
  - Passenger Terminals
  - Intermodal Freight - Rail Terminals
- Projects**
- NHS/SIS Connector Projects

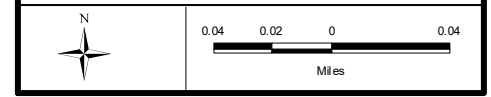
**NHS and SIS Highway System**

- SIS Highway Corridor
- SIS Highway Corridor (Planned Add)
- SIS Highway Corridor (Planned Drop)
- Emerging SIS Highway Corridor
- Emerging SIS Highway Corridor (Planned Add)
- Emerging SIS Highway Corridor (Planned Drop)
- SIS Highway Connector
- SIS Highway Connector (Planned Add)
- SIS Highway Connector (Planned Drop)
- SIS Military Access Facility
- SIS Military Access Facility (Planned Add)
- SIS Military Access Facility (Planned Drop)
- NHS

Work Program Name	1961143	RE_SUR
Location/Route number	SR 45 (US 41/TAMIAMI TRAIL) AT PINEY POINT RD (PORT MANATEE)	
Limit		



DISTRICT 5  
 Date: 9/18/2017



Source: Esri, DigitalGlobe, GeoEye, i-cubed, USDA, USGS, AEX, Getmapping, Aerogrid, IGN, IGP, swisstopo, and the GIS User Community



Source: Esri, DigitalGlobe, GeoEye, i-cubed, USDA, USGS, AEX, Getmapping, Aerogrid, IGN, ICP, swisstopo, and the GIS User Community

**FREIGHT CONNECTORS**  
Operational Quick Fix Projects

**SR 518 at Sarno Road**  
State of Florida Department of Transportation  
Systems Planning Office

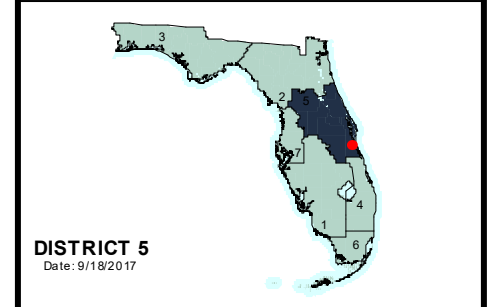
**LEGEND**

- SIS Hubs**
- Airports
  - Seaports
  - Passenger Terminals
  - Passenger Terminals (Planned)
  - Spaceport
  - Intermodal Freight - Rail Terminals
- Emerging SIS Hubs**
- Airports
  - Seaports
  - Passenger Terminals
  - Intermodal Freight - Rail Terminals
- Projects**
- NHS/SIS Connector Projects

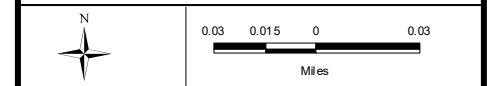
**NHS and SIS Highway System**

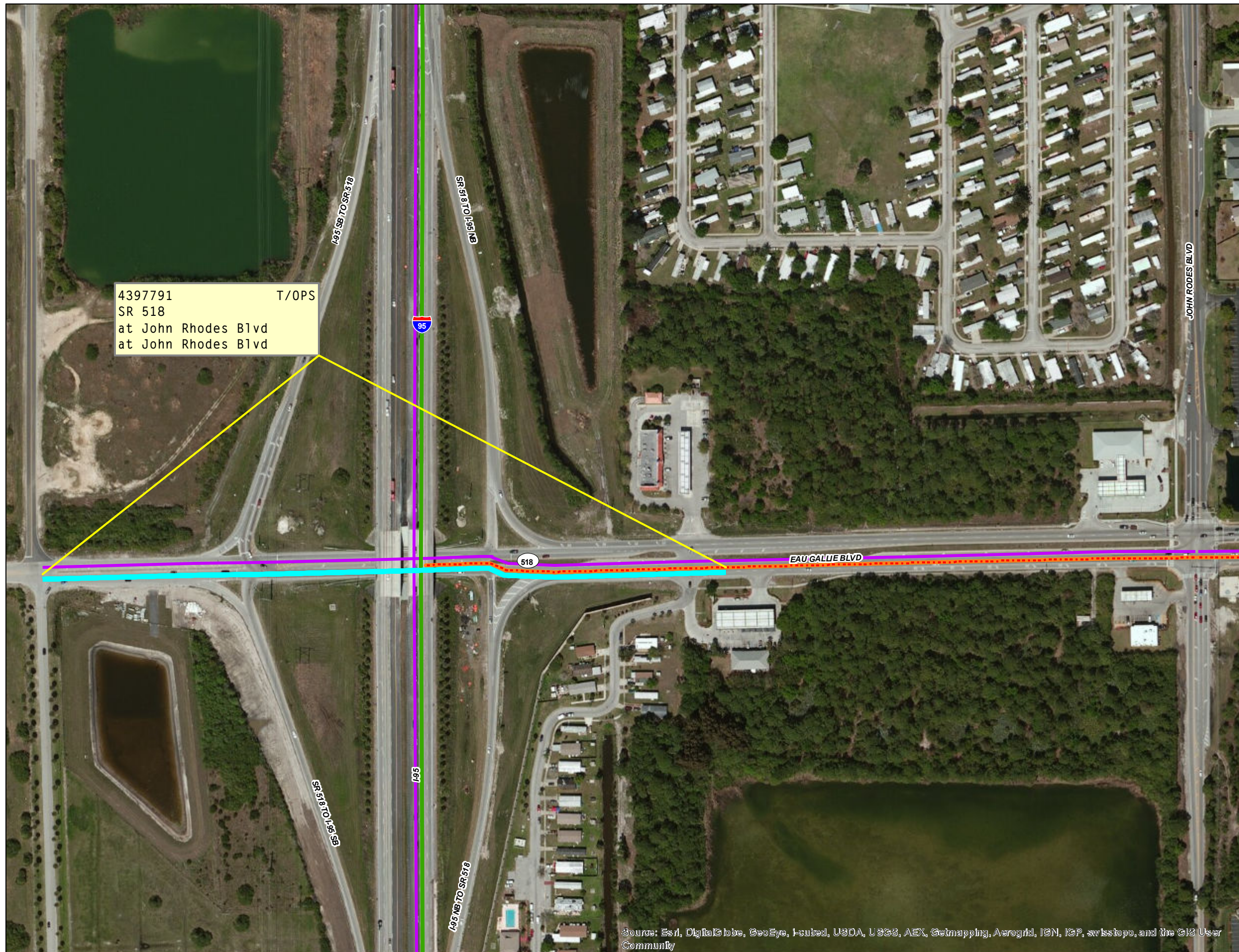
- SIS Highway Corridor
- SIS Highway Corridor (Planned Add)
- SIS Highway Corridor (Planned Drop)
- Emerging SIS Highway Corridor
- Emerging SIS Highway Corridor (Planned Add)
- Emerging SIS Highway Corridor (Planned Drop)
- SIS Highway Connector
- SIS Highway Connector (Planned Add)
- SIS Highway Connector (Planned Drop)
- SIS Military Access Facility
- SIS Military Access Facility (Planned Add)
- SIS Military Access Facility (Planned Drop)
- NHS

Work Program Item No.	1961143	RE_SUR
Location/Route number	SR 45 (US 41/TAMIAMI TRAIL) AT PINEY POINT RD (PORT MANATEE)	
Limbs		



**DISTRICT 5**  
Date: 9/18/2017





4397791 T/OPS  
 SR 518  
 at John Rhodes Blvd  
 at John Rhodes Blvd

**FREIGHT CONNECTORS**  
 Operational Quick Fix Projects

SR 518 at John Rhodes Blvd  
 Florida Department of Transportation  
 Systems Planning Office

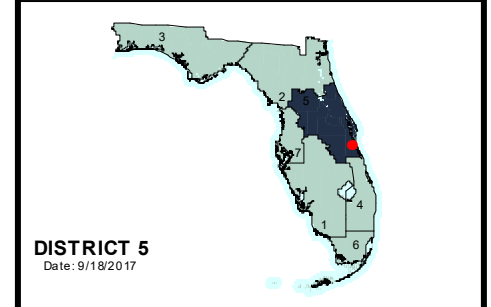
**LEGEND**

- SIS Hubs**
- Airports
  - Seaports
  - Passenger Terminals
  - Passenger Terminals (Planned)
  - Spaceport
  - Intermodal Freight - Rail Terminals
- Emerging SIS Hubs**
- Airports
  - Seaports
  - Passenger Terminals
  - Intermodal Freight - Rail Terminals
- Projects**
- NHS/SIS Connector Projects

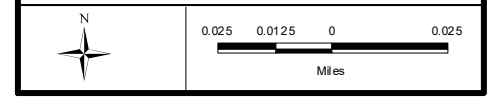
**NHS and SIS Highway System**

- SIS Highway Corridor
- SIS Highway Corridor (Planned Add)
- SIS Highway Corridor (Planned Drop)
- Emerging SIS Highway Corridor
- Emerging SIS Highway Corridor (Planned Add)
- Emerging SIS Highway Corridor (Planned Drop)
- SIS Highway Connector
- SIS Highway Connector (Planned Add)
- SIS Highway Connector (Planned Drop)
- SIS Military Access Facility
- SIS Military Access Facility (Planned Add)
- SIS Military Access Facility (Planned Drop)
- NHS

Work Program Element No.	1961143	RE_SUR
Location/Route number	SR 45 (US 41/TAMIAMI TRAIL) AT PINEY POINT RD (PORT MANATEE)	
Limbs		



**DISTRICT 5**  
 Date: 9/18/2017



Source: Esri, DigitalGlobe, GeoEye, i-cubed, USDA, USGS, AEX, Getmapping, Aerogrid, IGN, IGP, swisstopo, and the GIS User Community