

SECOND FIVE YEAR PLAN



Multi-Modal

FY 2023/2024 through FY 2027/2028

Capacity Projects on the Strategic Intermodal System
State of Florida Department of Transportation

2023/2024

FY 2027/2028

This Page is intentionally left blank

The FDOT Systems Planning Office produces a document set known as the SIS Funding Strategy, which includes three inter-related sequential documents that identify potential Strategic Intermodal System (SIS) Capacity Improvement projects in various stages of development. All of the projects identified within the SIS Funding Strategy are considered financially feasible for implementation within the next 25 year period. The Florida Legislature established the SIS in 2003 to enhance Florida's economic prosperity and competitiveness. The system encompasses transportation facilities of statewide and interregional significance, and is focused on the efficient movement of passengers and freight. The combined document set, as illustrated below, illustrates projects that are funded (Year 1), programmed for proposed funding (Years 2 through 5), planned to be funded (Years 6 through 10), and considered financially feasible based on projected State revenues (Years 11 through 25).

First Five Year Plan*

The First Five Year Plan illustrates projects on the SIS that are funded by the Legislature in the Work Program (Year 1) and projects that are programmed for proposed funding in the next 2 to 5 years.

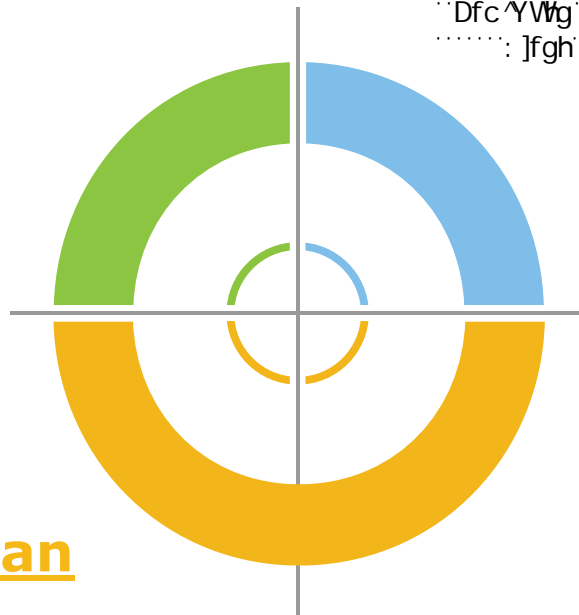
Update Cycle: Adopted annually by the FDOT Secretary, effective July 1st each year with the start of the new fiscal year.

*SIS Capacity Projects included in the Adopted Five-Year Work Program

Second Five Year Plan

The Second Five Year Plan illustrates projects that are planned to be funded in the five years (Years 6 through 10) beyond the Adopted Work Program. This plan could move forward into the Second Five as funds become available.

Update Cycle: Typically updated annually, usually in late summer following the First Five Plan update.



Cost Feasible Plan

The Cost Feasible Plan illustrates projects on the SIS that are considered financially feasible during the last fifteen years (years 11 to 25) of the SIS Funding Strategy, based on current revenue forecasts. Projects in this plan could move forward into the Second Five as funds become available or backwards into the Unfunded Needs Plan if revenues fall short of projections.

Update Cycle: Typically updated every 2 to 3 years as new revenue forecasts become available.


TABLE KEY:

Projects are listed in the table by unique Map ID numbers that correspond to the map on the facing page below.


Project facility name and limits, or in the case of an interchange project, the interchange location is identified; and the work improvement description are identified in these columns.

Project funding distribution is shown in these columns and is summarized by District, Statewide, and Locally allocated funds.

Some projects may not display on the map due to undetermined project location at this time. Most of these projects are in the early planning and engineering phases.



DISTRICT 5 SIS PLAN



MAP ID	FACILITY	DESCRIPTION	2019	2020	2021	2022	2023	TOTAL DISTRICT MANAGED	TOTAL STATE MANAGED	TOTAL LOCAL FUNDS	PD&E	PE	ROW	CON
4321931	I-4 MANAGED LANES FROM KIRKMAN TO SR 434	Managed Lanes	\$213,006	\$227,392	\$114,895	\$104,653	\$105,413	\$285,830	\$324,529	\$155,000				●
4068696	I-95 FROM 0.5 MILE N OF SR 44 SOUTH OF I-4	Add 2 Lanes to build 6 Lanes	\$0	\$500	\$0	\$0	\$0	\$500	\$0			●		
2427152	I-95 FROM 1.508 MILES S OF I-4 TO 1.6 MILES N US 92	Modify Interchange	\$0	\$200,162	\$0	\$0	\$0	\$0	\$200,162					●
2402004	SR 429 (WEKIVA PKWY) FROM ORANGE BOULEVARD TO W OF I-4 (SR 400)	New Road	\$248,933	\$0	\$0	\$0	\$0	\$150,957	\$97,976					●
2402003	SR 46 (WEKIVA PKWY) FROM W OF CENTER RD TO INTERSTATE 4	Add 2 Lanes to build 8 Lanes	\$22,467	\$0	\$0	\$0	\$0	\$268	\$22,199					●
4183211	SR 500 (US 17-92) 2 INTERSECTIONS VINE ST AND DONEGAN AVE	Add Turn Lane	\$30	\$0	\$0	\$0	\$0	\$30	\$0					●
ANNUAL TOTALS			\$484,436	\$428,054	\$114,895	\$104,653	\$105,413	\$437,585	\$644,866	\$155,000				

All Values in Thousands of "As Programmed" Dollars

PD&E –Project Development & Environmental
PE –Preliminary Engineering

ROW –Right-of-Way
CON –Construction and Support and May Include Grants

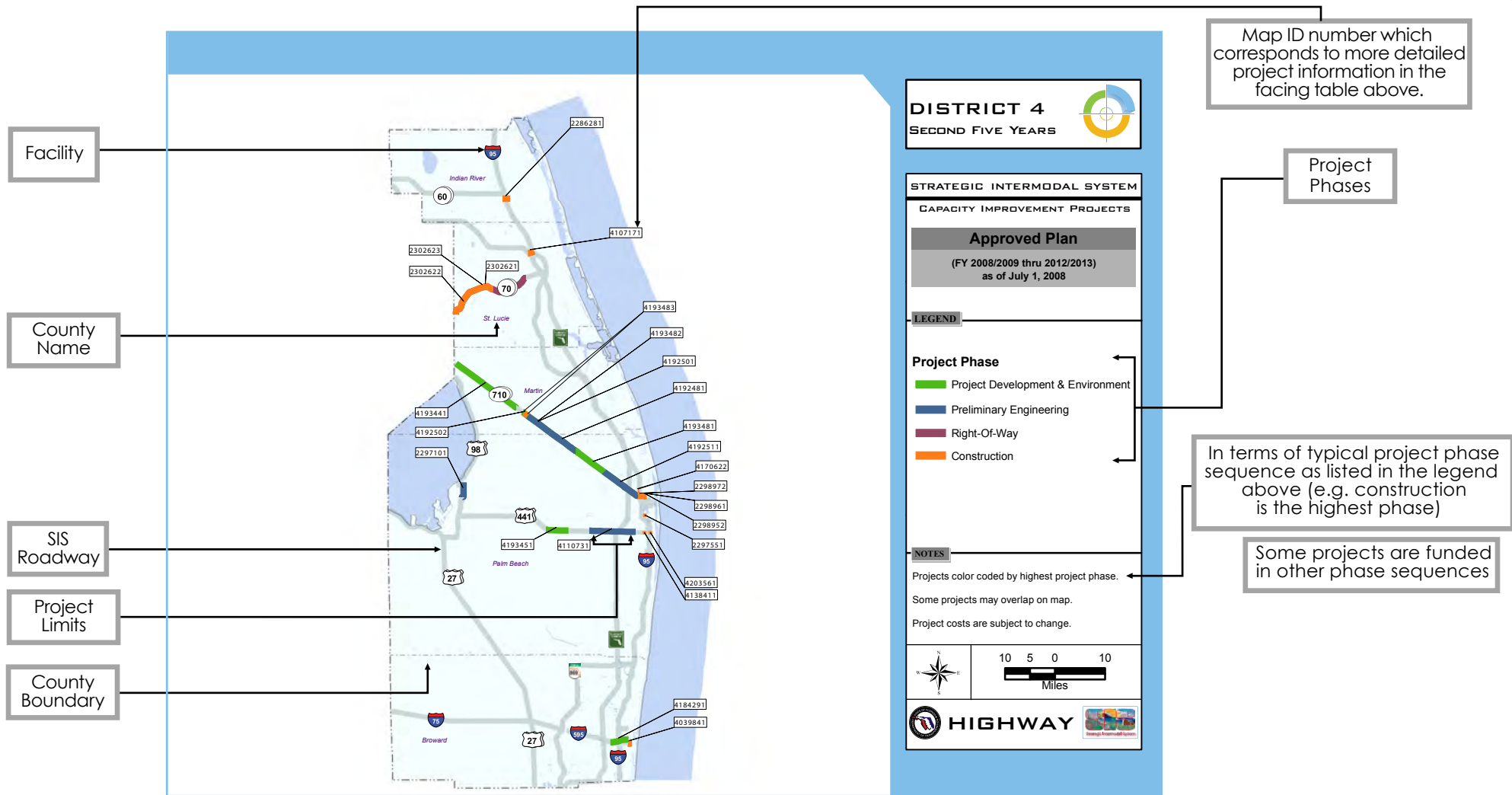
A summary row is provided for a District-wide review of project totals.

Costs are shown in thousands by year of programmed expenditure. Costs within a year could include multiple phases.

The Grant phase refers to a funding strategy where contributions are exchanged between Federal, State, and/or Local entities.

Columns on the far right give information related to project phase. A dot indicates the phase included within the five year timed period.

MAP KEY:



Project Development and Environment - study that satisfies the National Environmental Policy Act (NEPA) process resulting in a location design concept for an engineering and environmentally feasible alternative to meet the need determined in the planning phase.

Preliminary Engineering - program to further develop and analyze location and design engineering phases of highway and bridge construction projects.

Right of Way - the phase of acquiring land to support the construction projects.

Construction - phase consists of the physical work performed to build or assemble the infrastructure



District 1 SIS Plan



MAP ID	FACILITY	DESCRIPTION	2024	2025	2026	2027	2028	TOTAL STATE MANAGED	TOTAL DISTRICT MANAGED	TOTAL LOCAL FUNDS	PD&E	PE	ENV	ROW	CON
4301853	I-4 AT SR 33 INTERCHANGE MODIFICATION	Modify Interchange	\$0	\$0	\$0	\$0	\$84,820	\$84,121	\$200	\$500					●
2010325	I-75 (SR 93) AT US 301 INTERCHANGE	Modify Interchange	\$5,000	\$0	\$0	\$0	\$0	\$0	\$5,000	\$0					●
2012775	I-75 (SR93) AT BEE RIDGE ROAD	Modify Interchange	\$0	\$0	\$150,818	\$0	\$0	\$150,818	\$0	\$0					●
4206132	I-75 AT FRUITVILLE ROAD/CR 780	Modify Interchange	\$115,404	\$0	\$0	\$0	\$0	\$114,928	\$176	\$300					●
2012773	I-75 AT SR 72 (CLARK ROAD) INTERCHANGE	Modify Interchange	\$0	\$2,000	\$0	\$0	\$0	\$0	\$2,000	\$0					●
4178785	SR 29 FROM COLLIER C/L TO CR 832 (KERI RD)	Add 2 to Build 4 Lanes	\$0	\$4,155	\$5,043	\$0	\$0	\$9,199	\$0	\$0				●	
4178787	SR 29 FROM CR 832 (KERI RD) TO F RD	Add 2 to Build 4 Lanes	\$2,706	\$0	\$0	\$0	\$0	\$0	\$2,706	\$0				●	
4175405	SR 29 FROM CR 846 E TO N OF NEW MARKET ROAD N	Add 2 to Build 6 Lanes	\$5,780	\$0	\$0	\$0	\$0	\$5,780	\$0	\$0				●	
4175406	SR 29 FROM N OF NEW MARKET RD N ROAD TO SR 82	Add 2 to Build 4 Lanes	\$950	\$0	\$30,974	\$0	\$0	\$31,924	\$0	\$0				●	●
4175402	SR 29 FROM OIL WELL ROAD TO SUNNILAND NURSERY ROAD	Add 2 to Build 4 Lanes	\$8,275	\$0	\$0	\$0	\$0	\$8,275	\$0	\$0		●	●		
4178784	SR 29 FROM SR 82 TO HENDRY C/L	Add 2 to Build 4 Lanes	\$475	\$0	\$0	\$0	\$0	\$0	\$475	\$0					●
4193444	SR 710 FROM E OF L-63 CANAL TO SHERMAN WOOD RANCHES	Add 2 to Build 4 Lanes	\$0	\$7,257	\$0	\$0	\$0	\$7,257	\$0	\$0				●	
4193443	SR 710 FROM US 441 TO L-63 CANAL	New Road	\$0	\$0	\$72,067	\$0	\$0	\$71,542	\$0	\$525					●
4308491	SR 82 FROM GATOR SLOUGH LANE TO SR 29	Add 2 to Build 4 Lanes	\$0	\$1,600	\$0	\$0	\$0	\$0	\$1,600	\$0					●
4308481	SR 82 FROM HENDRY COUNTY LINE TO GATOR SLOUGH LANE	Add 2 to Build 4 Lanes	\$0	\$2,800	\$0	\$0	\$0	\$0	\$2,800	\$0					●
4192432	US 27 (SR 25) FROM HIGHLANDS COUNTY LINE TO CR 630A	Add 2 to Build 6 Lanes	\$500	\$0	\$122,712	\$0	\$0	\$121,212	\$100	\$1,900			●		●
4192433	US 27 FROM CR 630A TO PRESIDENTS DRIVE	Add 2 to Build 6 Lanes	\$70	\$0	\$75,811	\$0	\$0	\$75,811	\$70	\$0			●		●
ANNUAL TOTALS			\$139,160	\$17,812	\$457,425	\$0	\$84,820	\$680,867	\$15,127	\$3,225					

All Values in Thousands of "As Programmed" Dollars

PD&E - Project Development & Environmental;
 PE - Preliminary Engineering;
 ENV - Environmental Mitigation;

ROW - Right-of-Way;
 CON - Construction & Support (may Include Grants);
 TOTAL LOCAL FUNDS include all funds that start with LF fund code;

DISTRICT 1

Second Five Years



STRATEGIC INTERMODAL SYSTEM

Capacity Improvement Projects

Approved Plan

FY 2023/2024 through FY 2027/2028
(as of July 1, 2018)

LEGEND

Project Phase

- █ Project Development & Environment
- █ Environmental Mitigation
- █ Preliminary Engineering
- █ Right-Of-Way
- █ Construction

NOTES

- Projects color coded by highest project phase.
- Some projects may overlap on map.
- Project costs are subject to change.



HIGHWAY





District 2 SIS Plan



MAP ID	FACILITY	DESCRIPTION	2024	2025	2026	2027	2028	TOTAL STATE MANAGED	TOTAL DISTRICT MANAGED	TOTAL LOCAL FUNDS	PD&E	PE	ENV	ROW	CON
2134702	I-10(SR8) FROM BAKER C/L TO DUVAL C/L	Managed Lanes	\$0	\$860	\$0	\$0	\$0	\$0	\$860	\$0		●			
2130012	I-10(SR8) FROM WEST OF CR125 TO W SR121	Managed Lanes	\$0	\$5,050	\$0	\$5,391	\$0	\$5,391	\$5,050	\$0		●		●	
2130015	I-10(SR8) FROM WEST OF SR121 TO NASSAU C/L	Managed Lanes	\$0	\$0	\$0	\$6,087	\$0	\$2,082	\$4,005	\$0		●		●	
2133459	I-295 FROM: SR13(SAN JOSE) TO: SR21(BLANDING BLVD)	Add 2 to Build 8 Lanes	\$200	\$5,000	\$0	\$101,203	\$940	\$107,343	\$0	\$0				●	●
4355751	I-295(SR9A) @ US17 TO SOUTH OF WELLS ROAD	Modify Interchange	\$264	\$0	\$0	\$0	\$0	\$0	\$264	\$0					●
2093014	I-295(SR9A) FROM: SOUTHSIDE CONNECTOR(SR113) TO: SR202 JTB	Managed Lanes	\$2,687	\$3,423	\$0	\$0	\$370,071	\$376,181	\$0	\$0		●		●	●
4338992	I-95(SR9) @ SR115(US1)/ML KING/20TH STREET	Modify Interchange	\$352	\$0	\$0	\$0	\$0	\$0	\$352	\$0					●
4240264	I-95(SR9) FROM: INT'L GOLF PKWY TO: DUVAL CL	Managed Lanes	\$3,851	\$0	\$0	\$0	\$0	\$3,851	\$0	\$0					●
4240265	I-95(SR9) FROM: ST JOHNS C/L TO: I-295(SR9A)	Add 2 to Build 8 Lanes	\$1,085	\$0	\$0	\$0	\$0	\$1,085	\$0	\$0					●
4229388	SR23 FROM I-95 TO WEST OF CR16A	New Road	\$0	\$3,606	\$0	\$0	\$0	\$1,803	\$1,803	\$0					●
4229387	SR23 FROM WEST OF CR16A TO EAST OF CR209	New Road	\$0	\$3,364	\$0	\$0	\$0	\$1,682	\$1,682	\$0					●
2078502	SR26 CORRIDOR FROM: GILCHRIST C/L TO: CR26A E OF NEWBERRY	Add 2 to Build 4 Lanes	\$1,503	\$0	\$0	\$0	\$0	\$1,503	\$0	\$0				●	
ANNUAL TOTALS			\$9,942	\$21,303	\$0	\$112,681	\$371,011	\$500,921	\$14,016	\$0					

All Values in Thousands of "As Programmed" Dollars

PD&E - Project Development & Environmental;
 PE - Preliminary Engineering;
 ENV - Environmental Mitigation;

ROW - Right-of-Way;
 CON - Construction & Support (may Include Grants);
 TOTAL LOCAL FUNDS include all funds that start with LF fund code;

DISTRICT 2

Second Five Years



STRATEGIC INTERMODAL SYSTEM

Capacity Improvement Projects

Approved Plan
 FY 2023/2024 through FY 2027/2028
 (as of July 1, 2018)

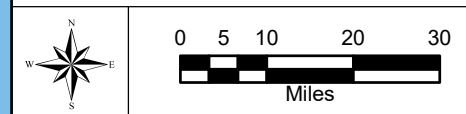
LEGEND

Project Phase

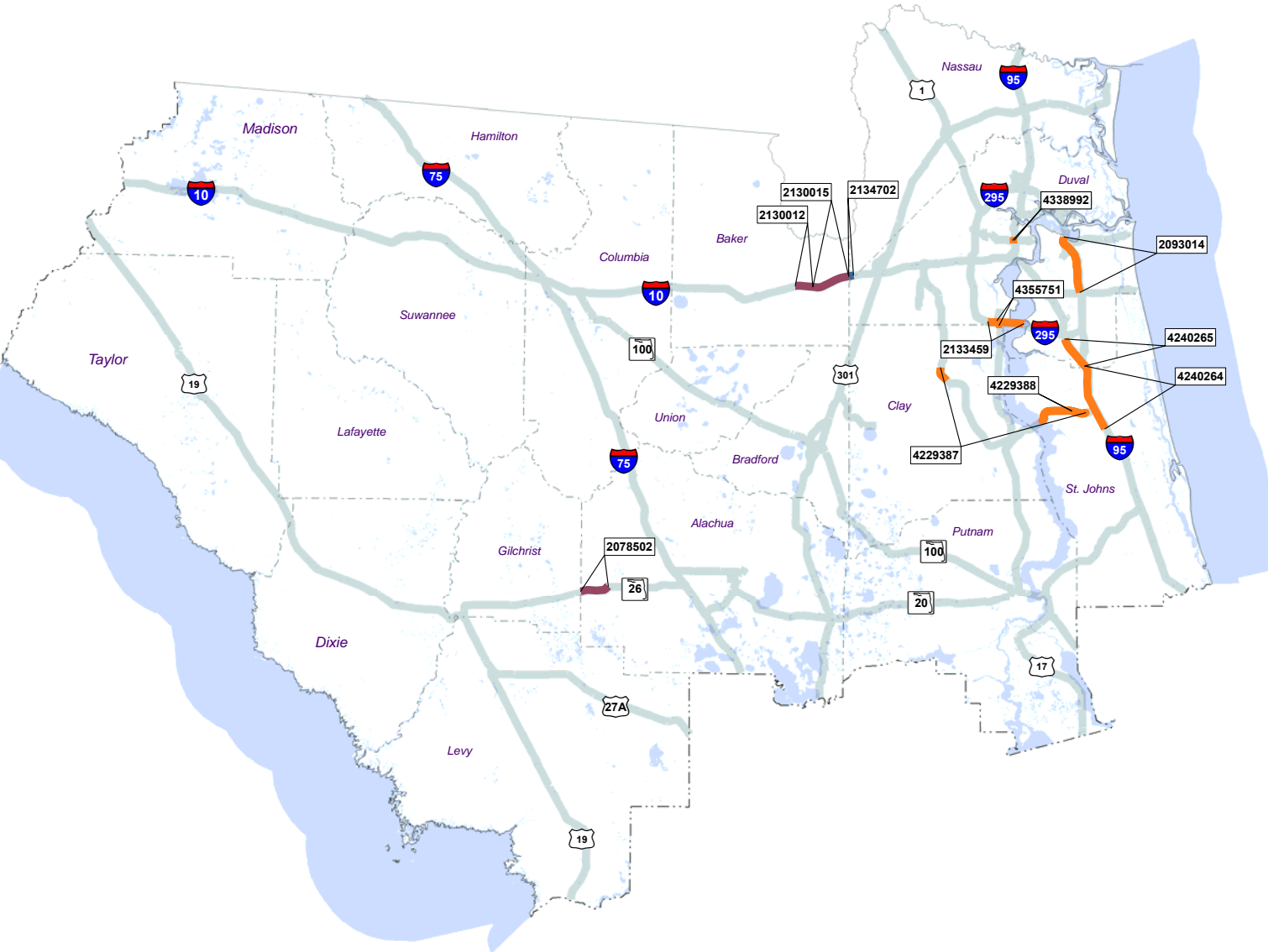
- █ Project Development & Environment
- █ Environmental Mitigation
- █ Preliminary Engineering
- █ Right-Of-Way
- █ Construction

NOTES

- Projects color coded by highest project phase.
- Some projects may overlap on map.
- Project costs are subject to change.



HIGHWAY





District 3 SIS Plan



MAP ID	FACILITY	DESCRIPTION	2024	2025	2026	2027	2028	TOTAL STATE MANAGED	TOTAL DISTRICT MANAGED	TOTAL LOCAL FUNDS	PD&E	PE	ENV	ROW	CON
4337434	SR 187 (US 331) FROM SR 10 (US 90) TO S OF HOLLEY KING RD	Right Of Way	\$1,750	\$1,021	\$0	\$0	\$0	\$2,571	\$200	\$0				●	
4371791	SR 30 (US 98) FROM COUNTY ROAD 30A TO BAY COUNTY LINE	Project Dev. & Env.	\$0	\$0	\$0	\$19,250	\$0	\$17,500	\$1,750	\$0		●			
2179103	SR 75 (US 231) FROM SOUTH OF PIPE LINE RD TO NORTH OF PENNY ROAD	Right Of Way	\$10,625	\$6,200	\$0	\$0	\$0	\$16,625	\$200	\$0				●	
2179107	SR 75 (US 231) FROM SR 30A (US 98) 15TH ST TO SR 368 23RD STREET	Add 2 to Build 6 Lanes	\$115,891	\$0	\$0	\$0	\$0	\$114,402	\$1,489	\$0					●
2179108	SR 75 (US 231) FROM SR 368 23RD STREET TO SOUTH OF PIPE LINE ROAD	Add 2 to Build 6 Lanes	\$0	\$0	\$74,840	\$0	\$0	\$73,877	\$964	\$0					●
4335902	SR 79 WAUKESHA ST FROM NORTH OF SR 8 (1-10) TO SR 10 (US 90)	Preliminary Engineering	\$0	\$15,050	\$11,250	\$4,100	\$0	\$30,400	\$0	\$0				●	
4331131	SR 8 (1-10) @ CR 99 BEULAH ROAD	Modify Interchange	\$0	\$9,427	\$152,279	\$1,600	\$0	\$111,017	\$52,289	\$0		●	●	●	●
4337433	SR 83 (US 331) FROM COY BURGESS LOOP ROAD TO SR 10 (US 90)	Add 2 to Build 4 Lanes	\$548	\$0	\$0	\$0	\$0	\$548	\$0	\$0		●			
ANNUAL TOTALS			\$128,814	\$31,698	\$238,369	\$24,950	\$0	\$366,940	\$56,892	\$0					

All Values in Thousands of "As Programmed" Dollars

PD&E - Project Development & Environmental;
 PE - Preliminary Engineering;
 ENV - Environmental Mitigation;

ROW - Right-of-Way;
 CON - Construction & Support (may Include Grants);
 TOTAL LOCAL FUNDS include all funds that start with LF fund code;

DISTRICT 3

Second Five Years



STRATEGIC INTERMODAL SYSTEM

Capacity Improvement Projects

Approved Plan

FY 2023/2024 through FY 2027/2028
(as of July 1, 2018)

LEGEND

Project Phase

- █ Project Development & Environment
- █ Environmental Mitigation
- █ Preliminary Engineering
- █ Right-Of-Way
- █ Construction

NOTES

Projects color coded by highest project phase.

Some projects may overlap on map.

Project costs are subject to change.



HIGHWAY





District 4 SIS Plan



MAP ID	FACILITY	DESCRIPTION	2024	2025	2026	2027	2028	TOTAL STATE MANAGED	TOTAL DISTRICT MANAGED	TOTAL LOCAL FUNDS	PD&E	PE	ENV	ROW	CON
4208093	I-595/SR-862/ P3 FROM E. OF I-75 TO W. OF I-95	Managed Lanes	\$96,924	\$74,461	\$75,425	\$77,664	\$109,870	\$334,536	\$99,808	\$0		●			●
4226815	I-95 FROM HIGH MEADOWS TO MARTIN/ST. LUCIE COUNTY LINE	Project Dev. & Env.	\$550	\$2,200	\$0	\$0	\$0	\$2,750	\$0	\$0	●				
4132522	I-95 FROM INDIANTOWN ROAD TO MARTIN/PALM BEACH COUNTY LINE	Project Dev. & Env.	\$125	\$575	\$0	\$0	\$0	\$700	\$0	\$0	●				
4132532	I-95 FROM MARTIN/PALM BEACH COUNTY LINE TO CR-708/BRIDGE ROAD	Project Dev. & Env.	\$550	\$1,600	\$0	\$0	\$0	\$2,150	\$0	\$0	●				
4226816	I-95 FROM MARTIN/ST. LUCIE COUNTY LINE TO SR-70	Project Dev. & Env.	\$550	\$2,110	\$0	\$0	\$0	\$2,660	\$0	\$0	●				
4192522	SR-710/WARFIELD BL. FR MARTIN FPL PWR PLANT TO CR609/SW ALLAPATTAH	Add 2 to Build 8 Lanes	\$0	\$46,807	\$0	\$0	\$0	\$46,807	\$0	\$0					●
4378681	SR-80/SOUTHERN BLVD. RAMPS AND SR-7/US-441	Add Turn Lane	\$5,172	\$0	\$0	\$0	\$0	\$5,172	\$0	\$0					●
4127331	SR-9/I-95 @ 10TH AVE NORTH IN LAKE WORTH	Modify Interchange	\$0	\$0	\$0	\$0	\$29,320	\$29,320	\$0	\$0					●
4132571	SR-9/I-95 @ HYPOLUXO ROAD	Modify Interchange	\$17,014	\$0	\$0	\$0	\$0	\$17,014	\$0	\$0					●
4132581	SR-9/I-95 @ LANTANA ROAD	Modify Interchange	\$19,678	\$0	\$0	\$0	\$0	\$19,561	\$117	\$0					●
4130482	SR-9/I-95 @ OSLO ROAD INTERCHANGE	Modify Interchange	\$42,957	\$0	\$0	\$0	\$0	\$42,957	\$0	\$0					●
4132601	SR-9/I-95 @ PALM BEACH LAKES BLVD	Modify Interchange	\$20	\$0	\$0	\$12,208	\$0	\$11,011	\$1,217	\$0			●		●
4132651	SR-9/I-95 @ PGA BOULEVARD/CENTRAL BOULEVARD	Modify Interchange	\$83,210	\$0	\$0	\$0	\$0	\$83,191	\$19	\$0					●
4355161	SR-9/I-95 @ SR-80/SOUTHERN BLVD. INTERCHG. ULTIM. IMPRVMT.	Modify Interchange	\$106,923	\$0	\$0	\$0	\$0	\$106,923	\$0	\$0					●
4355131	SR-9/I-95 @ SR-842/BROWARD BOULEVARD	Modify Interchange	\$123,024	\$0	\$0	\$0	\$0	\$123,024	\$0	\$0					●
4391711	SR-9/I-95 AT DAVIE BOULEVARD	Modify Interchange	\$1,000	\$3,637	\$0	\$18,013	\$0	\$22,649	\$0	\$0	●	●	●	●	
4391721	SR-9/I-95 AT OAKLAND PARK BOULEVARD	Modify Interchange	\$1,000	\$0	\$5,435	\$0	\$0	\$6,435	\$0	\$0	●	●	●		
4132542	SR-9/I-95 FROM CR-708/BRIDGE ROAD TO HIGH MEADOWS	Project Dev. & Env.	\$550	\$1,600	\$0	\$0	\$0	\$2,150	\$0	\$0	●				
4365191	SR-9/I-95 FROM S OF 45TH STREET TO N OF 45TH ST	Modify Interchange	\$0	\$1,000	\$78,469	\$0	\$0	\$78,469	\$1,000	\$0					●
4372791	SR-9/I-95 FROM SOUTH OF WOOLBRIGHT ROAD TO NORTH OF WOOLBRIGHT	Modify Interchange	\$11,425	\$0	\$0	\$0	\$0	\$11,425	\$0	\$0					●
4391701	SR-9/I-95 FROM SOUTH OF SHERIDAN STREET TO NORTH OF GRIFFIN ROAD	Modify Interchange	\$0	\$14,880	\$0	\$0	\$118,469	\$133,349	\$0	\$0		●	●	●	
4151521	SR-93/I-75 INTERCHNG @SR-820 PINES BLVD F N OF MIRAMAR PKWY T N OF P	Modify Interchange	\$0	\$69,074	\$0	\$0	\$0	\$69,074	\$0	\$0					●
ANNUAL TOTALS			\$510,672	\$217,944	\$159,329	\$107,885	\$257,659	\$1,151,327	\$102,161	\$0					

All Values in Thousands of "As Programmed" Dollars

PD&E - Project Development & Environmental;
 PE - Preliminary Engineering;
 ENV - Environmental Mitigation;

ROW - Right-of-Way;
 CON - Construction & Support (may Include Grants);
 TOTAL LOCAL FUNDS include all funds that start with LF fund code;

DISTRICT 4

Second Five Years



STRATEGIC INTERMODAL SYSTEM

Capacity Improvement Projects

Approved Plan

FY 2023/2024 through FY 2027/2028
(as of July 1, 2018)

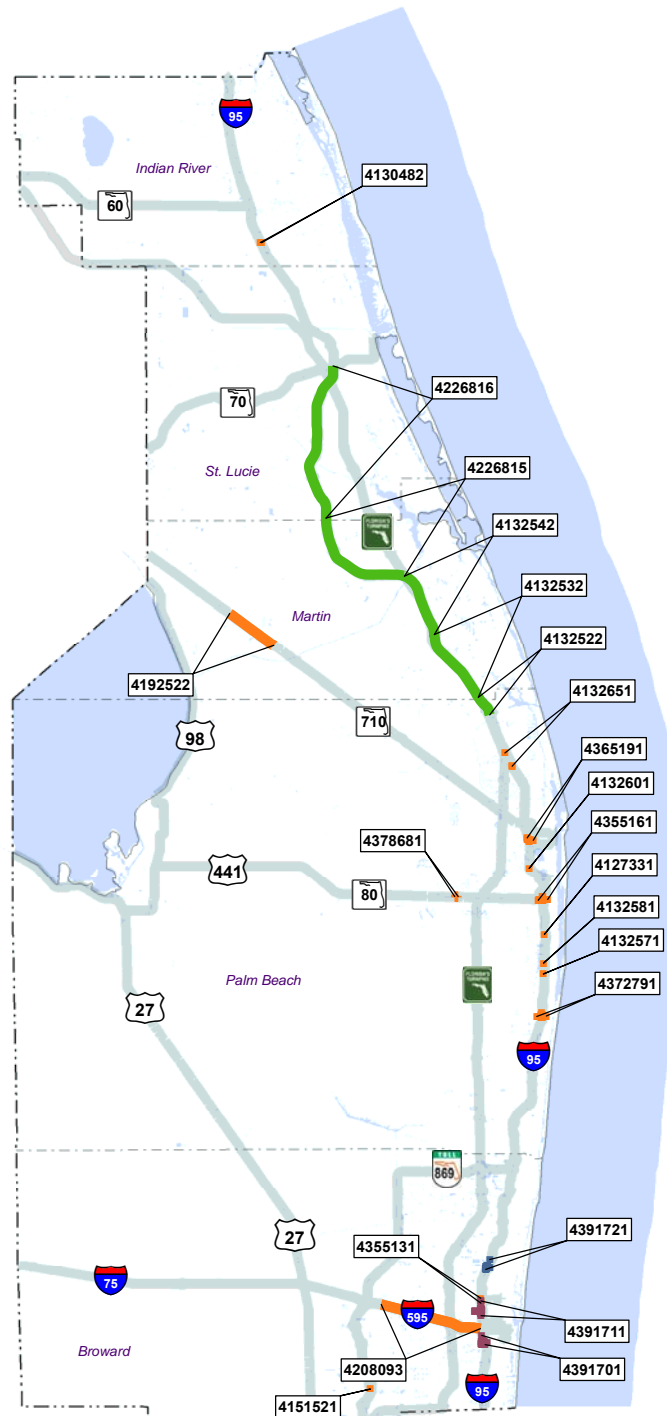
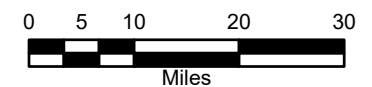
LEGEND

Project Phase

- █ Project Development & Environment
- █ Environmental Mitigation
- █ Preliminary Engineering
- █ Right-Of-Way
- █ Construction

NOTES

- Projects color coded by highest project phase.
- Some projects may overlap on map.
- Project costs are subject to change.



HIGHWAY





District 5 SIS Plan



MAP ID	FACILITY	DESCRIPTION	2024	2025	2026	2027	2028	TOTAL STATE MANAGED	TOTAL DISTRICT MANAGED	TOTAL LOCAL FUNDS	PD&E	PE	ENV	ROW	CON
4413621	I-4 BTU CONNECTION FROM 150' WEST OF CENTRAL FLORIDA PARKWAY TO S	Managed Lanes	\$50	\$0	\$0	\$0	\$0	\$50	\$0	\$0					●
4321931	I-4 MANAGED LANES FROM KIRKMAN TO SR 434	Managed Lanes	\$81,890	\$82,723	\$83,579	\$84,458	\$85,362	\$136,918	\$281,093	\$0					●
4289471	SR 40 FROM BREAKAWAY TRAIL TO WILLIAMSON BLVD	Project Dev. & Env.	\$0	\$2,260	\$3,175	\$1,650	\$1,053	\$8,018	\$120	\$0				●	
2425924	SR 400 (I-4) 1 MILE E OF SR 434 TO E OF SR 15/600 (US 17/92)	Managed Lanes	\$10,856	\$4,866	\$7,983	\$841,363	\$0	\$854,813	\$10,256	\$0		●		●	●
2424848	SR 400 (I-4) E OF SR 522 (OSCEOLA PKWY) TO WEST OF SR 528	Managed Lanes	\$4,741	\$0	\$0	\$0	\$0	\$4,741	\$0	\$0				●	
2424847	SR 400 (I-4) W OF SR 528 BEACHLINE TO W OF SR 435 KIRKMAN RD	Managed Lanes	\$148	\$0	\$0	\$0	\$0	\$148	\$0	\$0					●
4074023	SR 528 FROM E OF SR524(INDUSTRY) TO EAST OF SR 3	Add 2 to Build 6 Lanes	\$1,060	\$1,410	\$1,276	\$410	\$182	\$4,159	\$179	\$0				●	
4074024	SR 528 FROM EAST OF SR 3 TO PORT CANAVERAL INTERCHANGE	Add 2 to Build 6 Lanes	\$604	\$1,074	\$274	\$189	\$383,920	\$382,840	\$3,221	\$0				●	●
4269054	ST JOHNS HERITAGE PKWY/ELLIS RD FROM JOHN RHODES BLVD TO W OF WI	Add 2 to Build 4 Lanes	\$7,753	\$25,135	\$0	\$0	\$0	\$0	\$32,887	\$0				●	
ANNUAL TOTALS			\$107,102	\$117,468	\$96,287	\$928,070	\$470,517	\$1,391,687	\$327,756	\$0					

All Values in Thousands of "As Programmed" Dollars

PD&E - Project Development & Environmental;
 PE - Preliminary Engineering;
 ENV - Environmental Mitigation;

ROW - Right-of-Way;
 CON - Construction & Support (may Include Grants);
 TOTAL LOCAL FUNDS include all funds that start with LF fund code;

DISTRICT 5

Second Five Years



STRATEGIC INTERMODAL SYSTEM

Capacity Improvement Projects

Approved Plan

FY 2023/2024 through FY 2027/2028
(as of July 1, 2018)

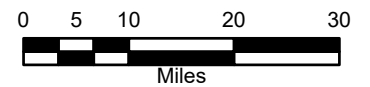
LEGEND

Project Phase

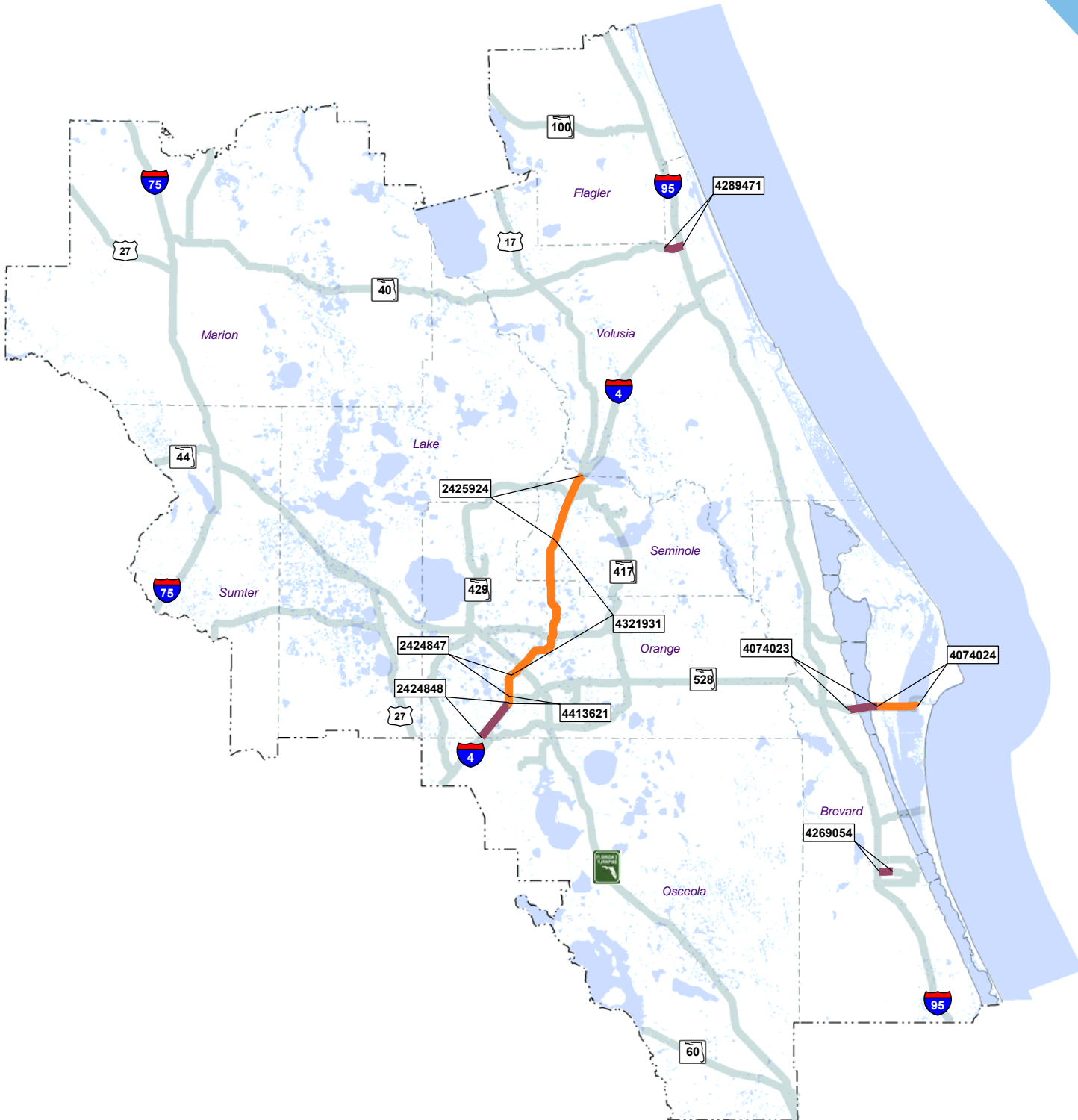
- █ Project Development & Environment
- █ Environmental Mitigation
- █ Preliminary Engineering
- █ Right-Of-Way
- █ Construction

NOTES

- Projects color coded by highest project phase.
- Some projects may overlap on map.
- Project costs are subject to change.



HIGHWAY





District 6 SIS Plan



MAP ID	FACILITY	DESCRIPTION	2024	2025	2026	2027	2028	TOTAL STATE MANAGED	TOTAL DISTRICT MANAGED	TOTAL LOCAL FUNDS	PD&E	PE	ENV	ROW	CON
2511563	PORT OF MIAMI TUNNEL FROM PORT OF MIAMI TO SR 836/I-395	New Road	\$51,038	\$52,569	\$54,147	\$55,771	\$57,444	\$253,944	\$0	\$17,025					●
4232513	SR 25/OKEECHOBEE RD FROM EAST OF NW 87 AVE TO NW 79 AVE (CONCR	Add 2 to Build 8 Lanes	\$42,858	\$0	\$0	\$0	\$0	\$42,858	\$0	\$0					●
4232514	SR 25/OKEECHOBEE RD FROM E. OF NW 116 WAY TO E. OF NW 87 AVE(CONC	Grade Separation	\$0	\$179,283	\$0	\$0	\$0	\$179,283	\$0	\$0					●
4365651	SR 25/OKEECHOBEE RD. & SR 826/PALMETTO EXPRESSWAY (VARIOUS RAMP	Project Dev. & Env.	\$75,987	\$0	\$0	\$0	\$0	\$75,987	\$0	\$0					●
4365652	SR 25/OKEECHOBEE RD. & SR 826/PALMETTO EXPRESSWAY (VARIOUS RAMP	Modify Interchange	\$0	\$0	\$0	\$61,422	\$0	\$57,143	\$4,279	\$0					●
4357603	SR 826/PALMETTO EXPY FROM E. OF NW 67 AVE TO E. OF NW 57 AVE	Managed Lanes	\$0	\$74,128	\$0	\$0	\$0	\$74,128	\$0	\$0					●
4357604	SR 826/PALMETTO EXPY FROM E. OF NW 57 AVE TO E. OF NW 42 AVE	Managed Lanes	\$0	\$86,302	\$0	\$0	\$0	\$86,302	\$0	\$0					●
4357605	SR 826/PALMETTO EXPY FROM E. OF NW 42 AVE TO E. OF NW 32 AVE	Managed Lanes	\$0	\$85,555	\$0	\$0	\$0	\$85,555	\$0	\$0					●
4357606	SR 826/PALMETTO EXPY FROM E. OF NW 32 AVE TO W. OF NW 17 AVE	Managed Lanes	\$91,317	\$0	\$0	\$0	\$0	\$91,317	\$0	\$0					●
4283583	SR 826/PALMETTO XWAY FROM W. OF NW 17TH AVENUE TO I-95 (EXPRESS LA	Managed Lanes	\$0	\$0	\$200,416	\$0	\$0	\$200,416	\$0	\$0					●
ANNUAL TOTALS			\$261,200	\$477,837	\$254,563	\$117,193	\$57,444	\$1,146,933	\$4,279	\$17,025					

All Values in Thousands of "As Programmed" Dollars


PD&E - Project Development & Environmental;
 PE - Preliminary Engineering;
 ENV - Environmental Mitigation;

ROW - Right-of-Way;
 CON - Construction & Support (may Include Grants);
 TOTAL LOCAL FUNDS include all funds that start with LF fund code;

The Following Projects Do Not Have Available Map Information:
4365652

DISTRICT 6

Second Five Years



STRATEGIC INTERMODAL SYSTEM

Capacity Improvement Projects

Approved Plan
FY 2023/2024 through FY 2027/2028
(as of July 1, 2018)

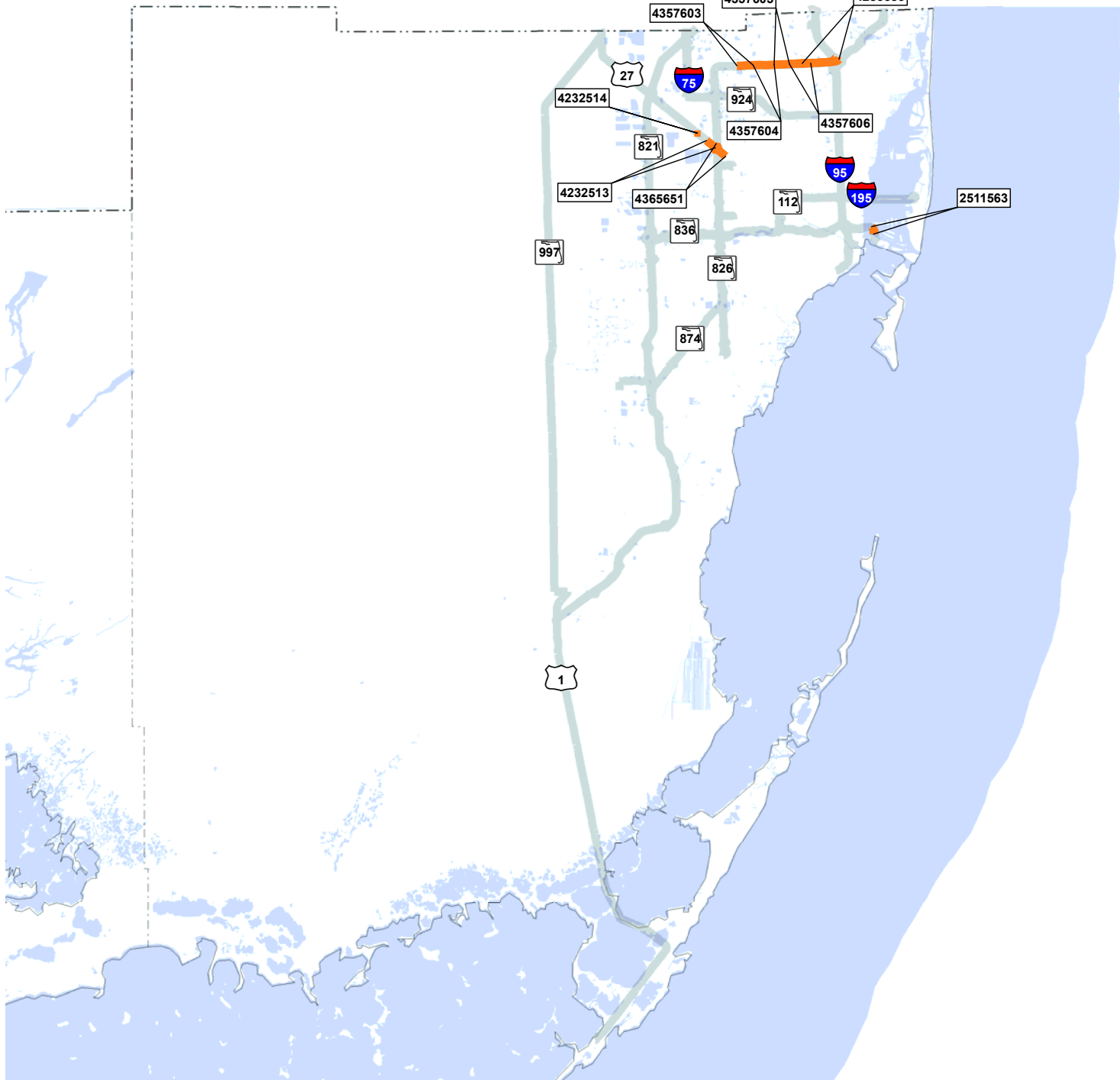
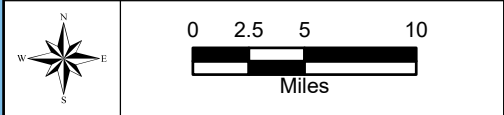
LEGEND

Project Phase

- █ Project Development & Environment
- █ Environmental Mitigation
- █ Preliminary Engineering
- █ Right-Of-Way
- █ Construction

NOTES

Projects color coded by highest project phase.
Some projects may overlap on map.
Project costs are subject to change.





District 7 SIS Plan



MAP ID	FACILITY	DESCRIPTION	2024	2025	2026	2027	2028	TOTAL STATE MANAGED	TOTAL DISTRICT MANAGED	TOTAL LOCAL FUNDS	PD&E	PE	ENV	ROW	CON
4318212	I-275 (SR 93) FROM N OF MLK TO N OF BUSCH BLVD	Managed Lanes	\$64,974	\$0	\$0	\$1,682	\$0	\$66,656	\$0	\$0		●			●
4371992	I-275 AND I-4 EXPRESS LANES - TAMPA BAY EXPRESS	Managed Lanes	\$7,194	\$0	\$0	\$0	\$0	\$7,194	\$0	\$0					●
4357261	I-4 (SR 400) FM W OF I-75 NB OFF RAMP TO E OF MANGO RD	Modify Interchange	\$4,480	\$0	\$17,682	\$0	\$43,484	\$65,646	\$0	\$0		●		●	●
4303371	I-4 (WESTBOUND) FM W OF ORIENT RD TO WEST OF I-75	Add Svc /Front/CD Sytem	\$2,024	\$0	\$72,589	\$0	\$0	\$74,613	\$0	\$0				●	●
4317462	I-4 FROM I-4/SELMON CONNECTOR TO E OF BRANCH FORBES RD	Managed Lanes	\$253,291	\$0	\$0	\$0	\$0	\$253,291	\$0	\$0		●			●
4274543	I-75 NB ON RAMP FROM NB US 301 TO I-75 NB	Modify Interchange	\$0	\$2,428	\$0	\$0	\$0	\$2,395	\$33	\$0					●
4305733	I75/I275 CD ROAD FM S OF COUNTY LINE RD TO COUNTY LINE RD (PHASE II)	New Road	\$0	\$0	\$0	\$9,456	\$0	\$9,456	\$0	\$0					●
4305732	I75/I275 FROM COUNTY LINE ROAD TO SR 56 (PHASE II)	Modify Interchange	\$0	\$0	\$0	\$55,722	\$0	\$55,722	\$0	\$0					●
4357501	SR 60 FROM VALRICO RD TO E OF DOVER RD	Add 2 to Build 6 Lanes	\$31,575	\$0	\$0	\$0	\$0	\$31,142	\$433	\$0					●
4337991	US 19 (SR 55) FROM N OF CR 95 TO S OF PINE RIDGE WAY S	Modify Interchange	\$78,652	\$0	\$0	\$0	\$0	\$78,652	\$0	\$0					●
4337961	US 19 (SR 55) FROM S OF TIMBERLANE RD TO S OF LAKE ST	Add Svc /Front/CD Sytem	\$0	\$0	\$111,355	\$0	\$0	\$111,355	\$0	\$0					●
4191822	US 41(SR45) @ SR54 FM W OF WILSON RD/SR 54 INT TO E OF OSPREY LN/SR5	Modify Interchange	\$31,937	\$0	\$0	\$0	\$183,870	\$215,807	\$0	\$0				●	●
4407491	US 41/SR 45/S 50TH ST @ CSX GRADE SEPARATION SOUTH OF CAUSEWAY BL	Grade Separation	\$0	\$0	\$60,940	\$0	\$0	\$60,940	\$0	\$0					●
ANNUAL TOTALS			\$474,127	\$2,428	\$262,566	\$66,860	\$227,354	\$1,032,869	\$466	\$0					

All Values in Thousands of "As Programmed" Dollars

PD&E - Project Development & Environmental;
 PE - Preliminary Engineering;
 ENV - Environmental Mitigation;

ROW - Right-of-Way;
 CON - Construction & Support (may Include Grants);
 TOTAL LOCAL FUNDS include all funds that start with LF fund code;

DISTRICT 7

Second Five Years



STRATEGIC INTERMODAL SYSTEM

Capacity Improvement Projects

Approved Plan

FY 2023/2024 through FY 2027/2028
(as of July 1, 2018)

LEGEND

Project Phase

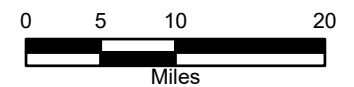
- █ Project Development & Environment
- █ Environmental Mitigation
- █ Preliminary Engineering
- █ Right-Of-Way
- █ Construction

NOTES

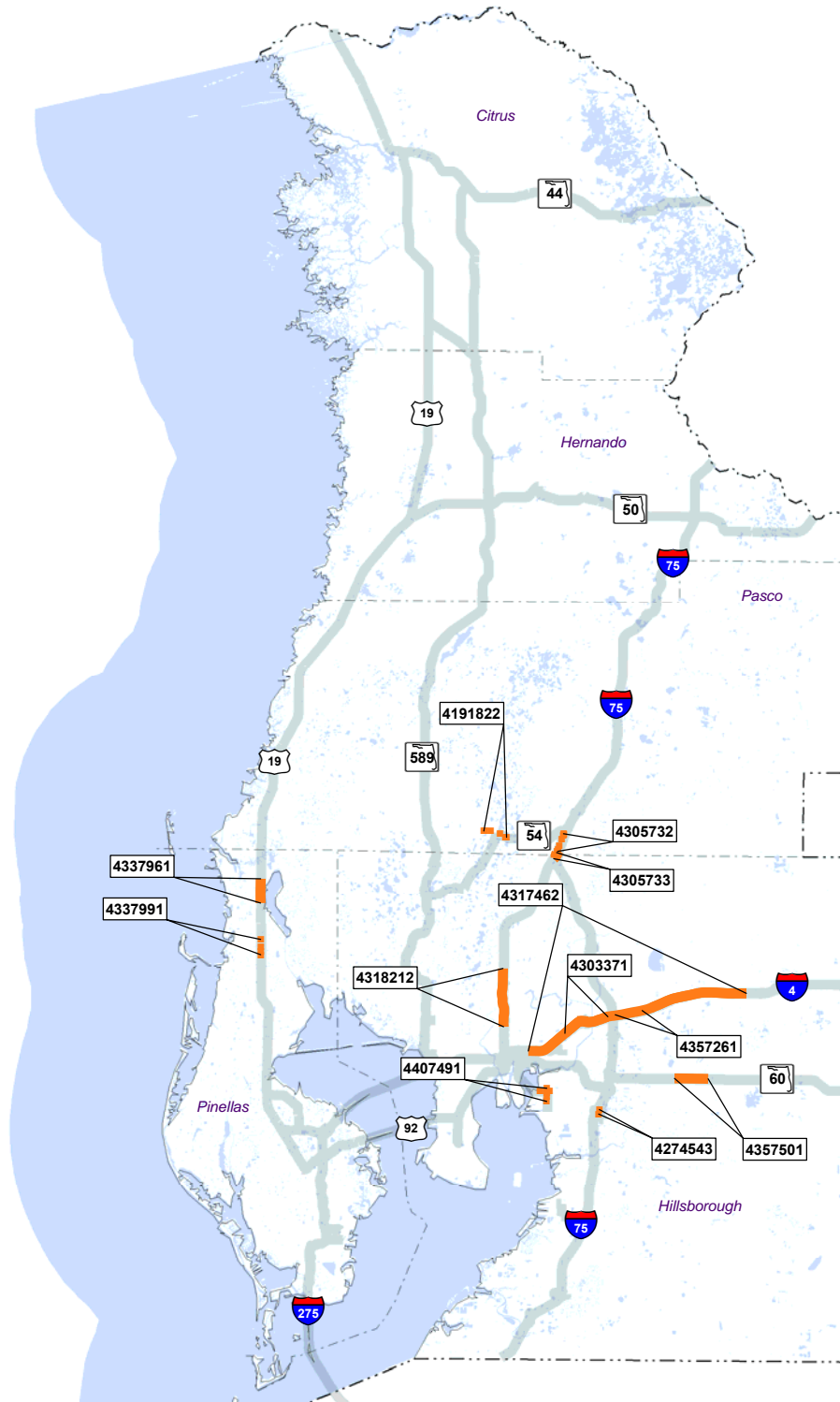
Projects color coded by highest project phase.

Some projects may overlap on map.

Project costs are subject to change.



HIGHWAY



The Following Projects Do Not Have Available Map Information: 4371992



Statewide SIS Modal Plan



MAP ID	D	FACILITY	DESCRIPTION	2024	2025	2026	2027	2028	TOTAL SIS FUNDS	TOTAL LOCAL FUNDS	TOTAL OTHER FUNDS	PD&E	PE	ENV	ROW	CON	GRA	
Aviation Capacity Improvements																		
4387531	7	TAMPA INTERNATIONAL AIRPORT - PHASE 2 AND 3 MASTER PLAN PROJEC	AIP: Airport Improvement Proj	\$50,000	\$50,000	\$50,000	\$0	\$0	\$90,000	\$60,000	\$0							●
4167863	9	STRATEGIC AIRPORT CAPACITY IMPROVEMENTS - SIS	RESERV: Reserve	\$38,014	\$33,993	\$35,078	\$65,186	\$50,000	\$222,271	\$0	\$0							●
ANNUAL TOTALS				\$88,014	\$83,993	\$85,078	\$65,186	\$50,000	\$312,271	\$60,000	\$0							
Rail Capacity Improvements																		
4167864	9	RAIL FREIGHT INVESTMENTS & IMPROVEMENTS - SIS	RESERV: Reserve	\$42,500	\$42,500	\$42,500	\$42,500	\$42,500	\$212,500	\$0	\$0							●
ANNUAL TOTALS				\$42,500	\$42,500	\$42,500	\$42,500	\$42,500	\$212,500	\$0	\$0							
Seaport Capacity Improvements																		
4402641	2	BLOUNT ISLAND BERTH IMPROVEMENTS	BERTH: Seaport Berth	\$17,500	\$17,500	\$0	\$0	\$0	\$26,250	\$8,750	\$0							●
4402642	2	BLOUNT ISLAND TERMINAL IMPROVEMENTS RELATED TO DEEPENING	TERM: Terminal Development	\$0	\$30,000	\$30,300	\$0	\$0	\$30,150	\$30,150	\$0							●
4373561	2	JAXPORT CHANNEL DEEPENING & WIDENING	DRCHAN: Drchan	\$65,121	\$35,635	\$0	\$0	\$0	\$50,378	\$50,378	\$0							●
4167865	9	STRATEGIC SEAPORT INVESTMENTS - SIS	RESERV: Reserve	\$10,866	\$20,146	\$39,727	\$50,000	\$50,000	\$170,739	\$0	\$0							●
ANNUAL TOTALS				\$93,487	\$103,281	\$70,027	\$50,000	\$50,000	\$277,517	\$89,278	\$0							

All Values in Thousands of "As Programmed" Dollars

PD&E - Project Development & Environmental; ROW - Right-of-Way;
 PE - Preliminary Engineering; CON - Construction & Support;
 ENV - Environmental Mitigation; GRA - Grants;

TOTAL SIS FUNDS include DI, DIS, GMR, and SIWR;
 TOTAL LOCAL FUNDS include all funds that start with LF fund code;
 TOTAL OTHER FUNDS include all funds except for DI, DIS, GMR, SIWR, and Local Funds;

MODAL

Second Five Years



STRATEGIC INTERMODAL SYSTEM

Capacity Improvement Projects

Approved Plan

FY 2023/2024 through FY 2027/2028
(as of July 1, 2018)

LEGEND

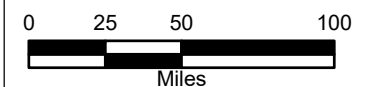
Project Year

- 2021/2022 Projects
- 2022/2023 and 2023/2024 Projects
- 2024/2025 and 2025/2026 Projects

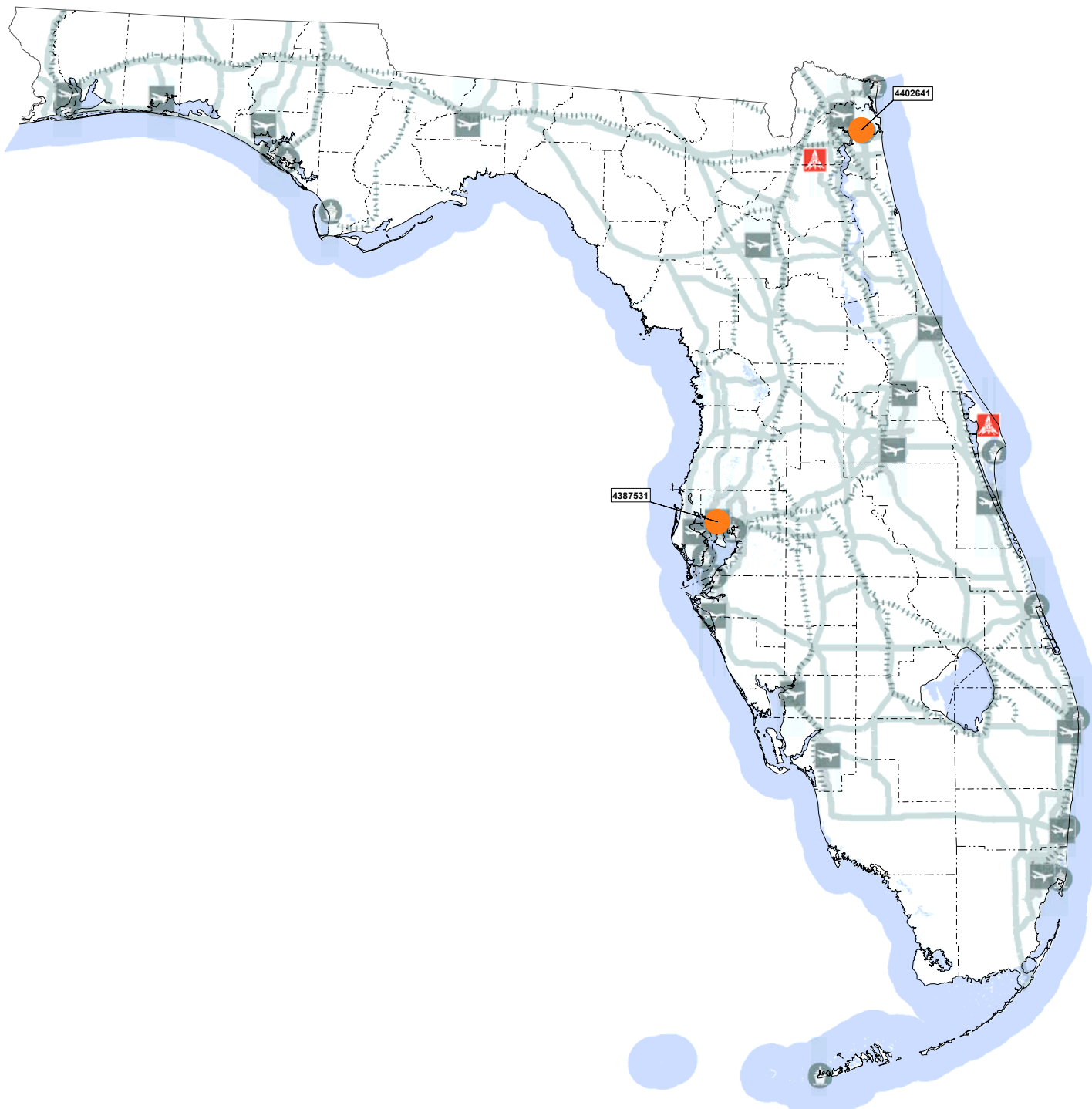
- 2021/2022 Projects
- 2022/2023 and 2023/2024 Projects
- 2024/2025 and 2025/2026 Projects

NOTES

- Projects color coded by highest project phase.
- Some projects may overlap on map.
- Project costs are subject to change.



HIGHWAY



The Following Projects Do Not Have Available Map Information:
4167863, 4167864, 4402642, 4373561, 4167865

State of Florida Department of Transportation
Intermodal Systems Development
Systems Planning Office
<http://www.dot.state.fl.us/planning/systems/>

