



Collaboration: Connecting Transportation Planning & Health

A Lunch and Learn Webinar

December 7, 2016
12:00 PM -1:00 PM

Moderator Melanie Weaver Carr (FDOT)



Florida BPPC Coordinator

Ernie Bradley (FDOH)



Health and Built Environment Coordinator

Peter Gies (Broward MPO)



Regional Transportation Planner

Elizabeth Whitton (MetroPlan Orlando)



Transportation Planner

Health, The Built Environment, and Complete Streets

Ernie Bradley, Health and Built Environment Coordinator

Florida Department of Health

Wednesday, December 7, 2016



Today's Agenda

- What is the built environment?
- How did the built environment start?
- How do public health & complete streets policy connect?
- What is the future of the built environment?
- Healthy Weight Community Champions

Florida Department of Health - Healthy Places



What is the Built Environment?

*Source: British Columbia's
Provincial Health Services
Authority Population & Public
Health



Florida Department of Health - Built Environment Interventions

- Complete Streets Policy Adoption
- Food Retail
 - Food Deserts
 - Farmers Markets
 - Corner Stores
 - Food Pantries
 - Food Service Guidelines
- Healthy Weight Community Champions

Robert Wood Johnson Foundation

2000

Initial funding of Built Environment's impact on health

2007

\$500 million to reduce childhood obesity

2015

Building a culture of health

National Prevention Strategy

*Source: U.S. Department of Health and Human Services



How do Complete Streets Improve Health?

- Reduce injuries
- Address some health equity issues
- More people are encouraged to bike and walk
- May improve air quality
- Complete Streets are child-friendly

Role of Health Departments in Complete Streets Process

- Cannot require counties, municipalities or public transportation agencies to implement
- Can play an important role by:
 - Convening work groups
 - Offering insight on community health issues
 - Education on the health impact of complete street policies
 - Promote the inclusion of all persons, including people in underserved communities and persons with disabilities

Complete Streets and Equity





Healthy Weight
COMMUNITY CHAMPION
2017 Recognition Program

Share how your community champions healthy weight best practices.

What is Healthy Weight Community Champions?

- 80 recognized communities statewide, with a total of 118 to date
- Policies and programs implemented by these municipalities and counties affect approximately 9.4 million Floridians

Best Practices

- Healthy Weight Community Champions “Best Practice” Categories:
 - Physical Activity
 - Nutrition
 - Leadership and Innovation
 - Other Awards and Recognitions
 - Health Promotion and Continuous Improvement

Eligibility

- Florida's municipalities (cities, towns and villages) and counties are eligible
- Submissions must be made by a municipal or county official or designee
- Unincorporated areas may submit under the sponsorship of the county in which they are located



Healthy Weight
COMMUNITY CHAMPION
2017 Recognition Program

How to Apply

The screenshot shows the HealthiestWeight Florida website. At the top, there is a navigation bar with the text "Return to the Florida Department of Health" and a social media icon for "#HealthiestWeightFL". The main header features the "HealthiestWeight" logo. Below the header is a navigation menu with buttons for "Home", "Strategies", "Activities", "Resources", and "Partners". The "Home" button is highlighted in yellow. A large banner graphic with colorful circles contains the text "65% of adults in Florida are at an unhealthy weight." Below the banner is the title "Healthy Weight Community Champion 2017 Recognition Program" and a link to "Apply Now" to be a 2017 Healthy Weight Community Champion! A section titled "The 2017 Timeline" lists key dates: "September 1, 2016: Submission Window Opens", "December 2, 2016: Submission Window Closes", and "January 13, 2017: Communities Recognized". A link for "Healthy Weight Community Champion Criteria" is also present. On the left side, there is a sidebar with the Florida Health logo and a description of the program as a public-private collaboration. At the bottom of the sidebar are buttons for "For Adults" and "For Children".

Return to the Florida Department of Health

#HealthiestWeightFL

HealthiestWeight

Home Strategies Activities Resources Partners

65% of adults in Florida are at an unhealthy weight.

Healthy Weight Community Champion 2017 Recognition Program

[Apply Now](#) to be a 2017 Healthy Weight Community Champion!

The 2017 Timeline

September 1, 2016: Submission Window Opens

December 2, 2016: Submission Window Closes

January 13, 2017: Communities Recognized

[Healthy Weight Community Champion Criteria](#)

Florida HEALTH

Healthiest Weight Florida is a public-private collaboration bringing together state agencies, not for profit organizations, businesses, and entire communities to help Florida's children and adults make choices about healthy eating and active living.

For Adults

For Children

<http://www.healthiestweightflorida.com/recognition.html>

Timeline

- September 1, 2016: Submission window opens
- December 2, 2016: Submission window closed
- **Application Window has been extended to December 16, 2016**
- January 13, 2017: Best practices posted and recognition announced

Recognition Highlights

- Featured on the Healthiest Weight Florida website
- Featured in regional and state-wide press releases
- Signed certificate from the State Surgeon General
- Custom graphic featuring name of individual jurisdiction

Thank You

Ernie Bradley

Ernest.Bradley@flhealth.gov

Health and Built Environment Coordinator

Florida Department of Health

Healthiest Weight Florida

(850) 245-4444 ext. 5362

www.healthiestweightflorida.com/recognition.html



Transportation, Health, and Complete Streets

Florida Bicycle and Pedestrian Partnership Council

December 7th, 2016

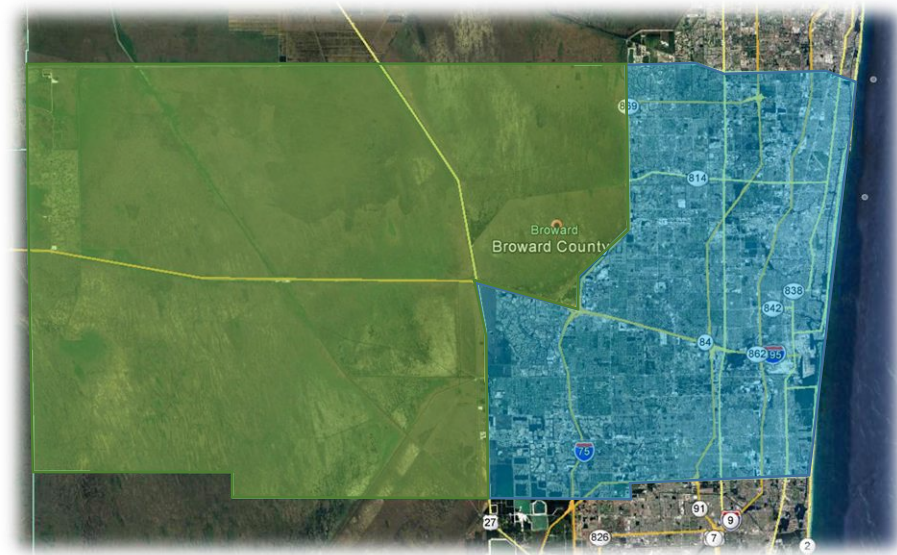
Peter Gies, AICP

Broward MPO

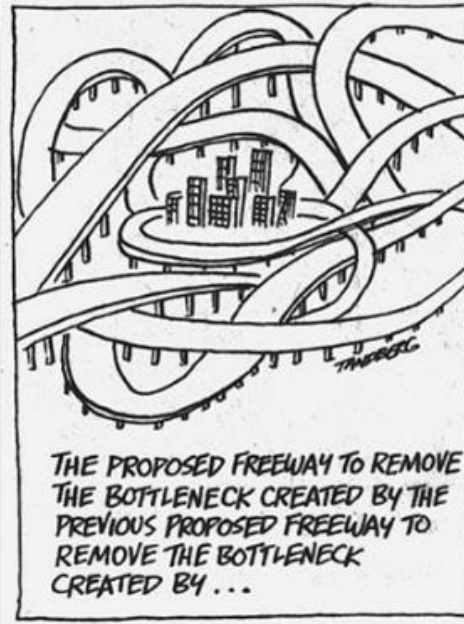


BROWARD'S URBAN CONDITION

- Population: 1.8M
- 31 Municipalities
- Developable Area: 470 s/m
- Conservation Area: 853 s/m
- Challenges ↔ Opportunities



THE FALLACY OF RELIEVING CONGESTION...



Source: FHWA

HISTORY – THE BEGINNING

- Adopted Transformation 2035 Long- Range Transportation Plan (Dec 2009)
- Focus on moving people, not cars
- Allocated large portion of funding to transit and bicycle/pedestrian projects (70%)
- Foundation for our Complete Streets Initiative

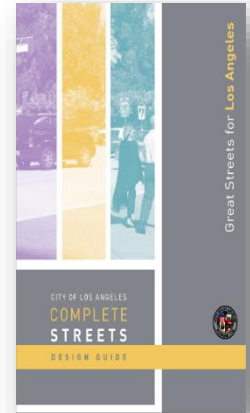


HISTORY – GAINING MOMENTUM

- Joint award with the CDC/TOUCH Initiative to incorporate health into transportation (2011)
 - Working with non-traditional partners (health community)
 - Developed the Complete Streets Guidelines
- Partners formed our Complete Streets Advisory Committee (CSAC)



Photo by Stewart Robertson, Kintyre-Hill and Associates



HISTORY - PARTNERING

- Broward MPO's Technical Assistance
 - July 2012, Board Complete Streets Guidelines
 - Policy & Planning Framework Models in 2013
 - Multi-Modal Level of Service (MMLOS) tool in 2013
- To date, approximately 13 local partners have taken action to incorporate Complete Streets into their policy initiatives



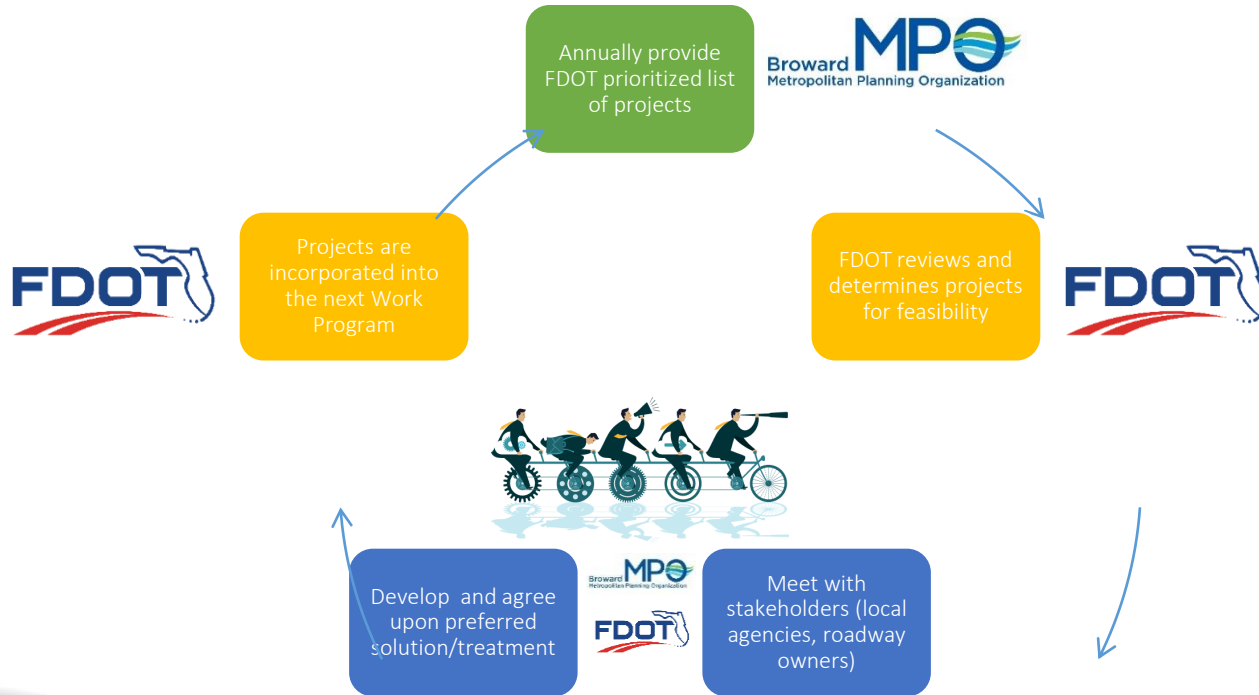
COMPLETE STREETS – NOW WHAT?

- Established necessary support for Complete Streets
- 2035 LRTP Identified list of bicycle/pedestrian improvements, but no clear path for implementation
- Funding Available



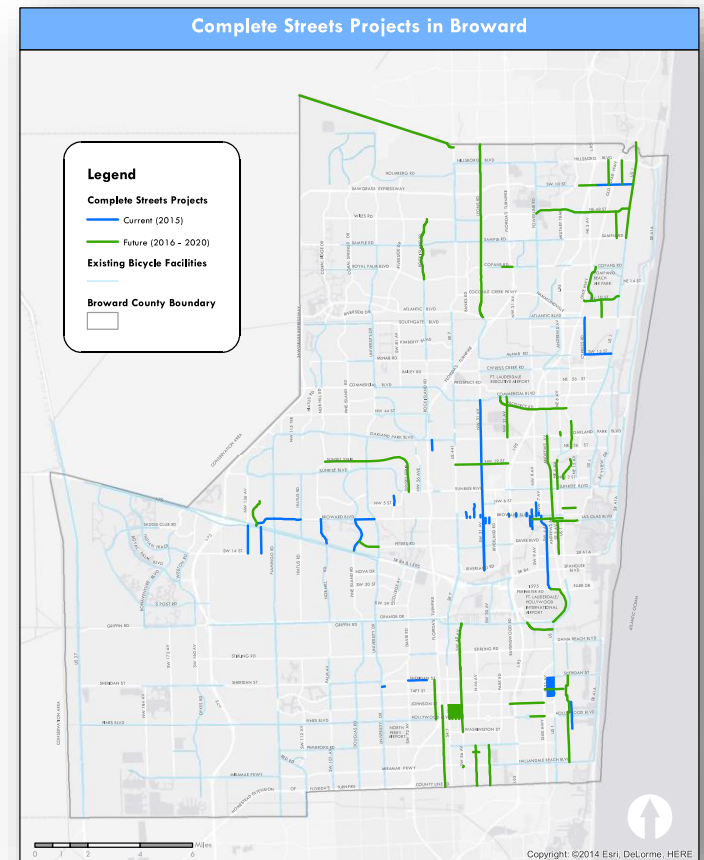
- FDOT as a partner and our construction wing
- Start with high priority projects (low-hanging fruit)
- Began programming projects in the 5-year Work Program

IMPLEMENTATION PROCESS



THE RESULT

- Broward MPO's Mobility Program
 - \$120 Million in Bicycle & Pedestrian improvements programmed for the next five years (State/Federal funding)
 - 90 miles – bicycle
 - 34 miles – pedestrian
- First Phase (Construction FY 2015)
 - 48 projects
 - \$15 million

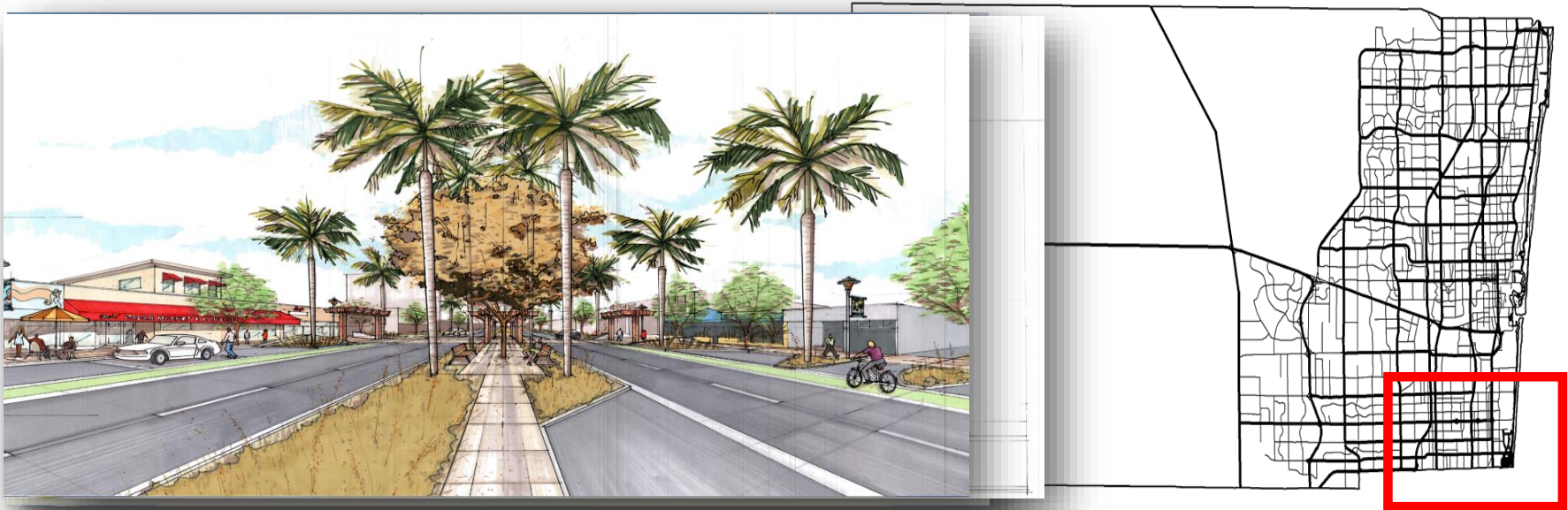


GROUND BREAKINGS

- Hollywood Blvd. (Urban)
 - Design 2016
 - Construction 2018
- Prospect Road (Industrial)
 - Design 2018
 - Construction 2020
- Loxahatchee Road (Suburban)
 - Design 2017
 - Construction 2019



HOLLYWOOD BLVD (URBAN)



PROSPECT ROAD (INDUSTRIAL)



LOXAHATCHEE ROAD (SUBURBAN)



AND A TIGER TOO...2016

- *Broward Regional Complete Streets Initiative*
- In partnership with 4 cities, Broward County, and the Florida Department of Transportation (FDOT)
- Connecting 5 existing gaps in the regional bicycle/pedestrian network
- \$19.1M project, awarded \$11.4M – remaining \$7.7M in local match
- Builds upon MPO's \$120M Mobility Program investment



LESSONS LEARNED

- Political support is key
- Mutating Roles – The Dawn of the Plangineer
- Predatory Planning
- Work within the existing process, but don't be afraid to forge a new path



THANK YOU & INFO:

Peter Gies, AICP

giesp@browardmpo.org

(954) 876-0048

Twitter: @PeterGies

Broward MPO:
[@SpeakUpBroward/SpeakUpBroward](#) (Twitter/Facebook)

To learn more about Broward's Complete Streets efforts:

<http://www.browardmpo.org/index.php/major-functions/complete-streets-initiative>



Healthy Communities through Transportation

Elizabeth Whitton, AICP

MetroPlan Orlando

December 7, 2016



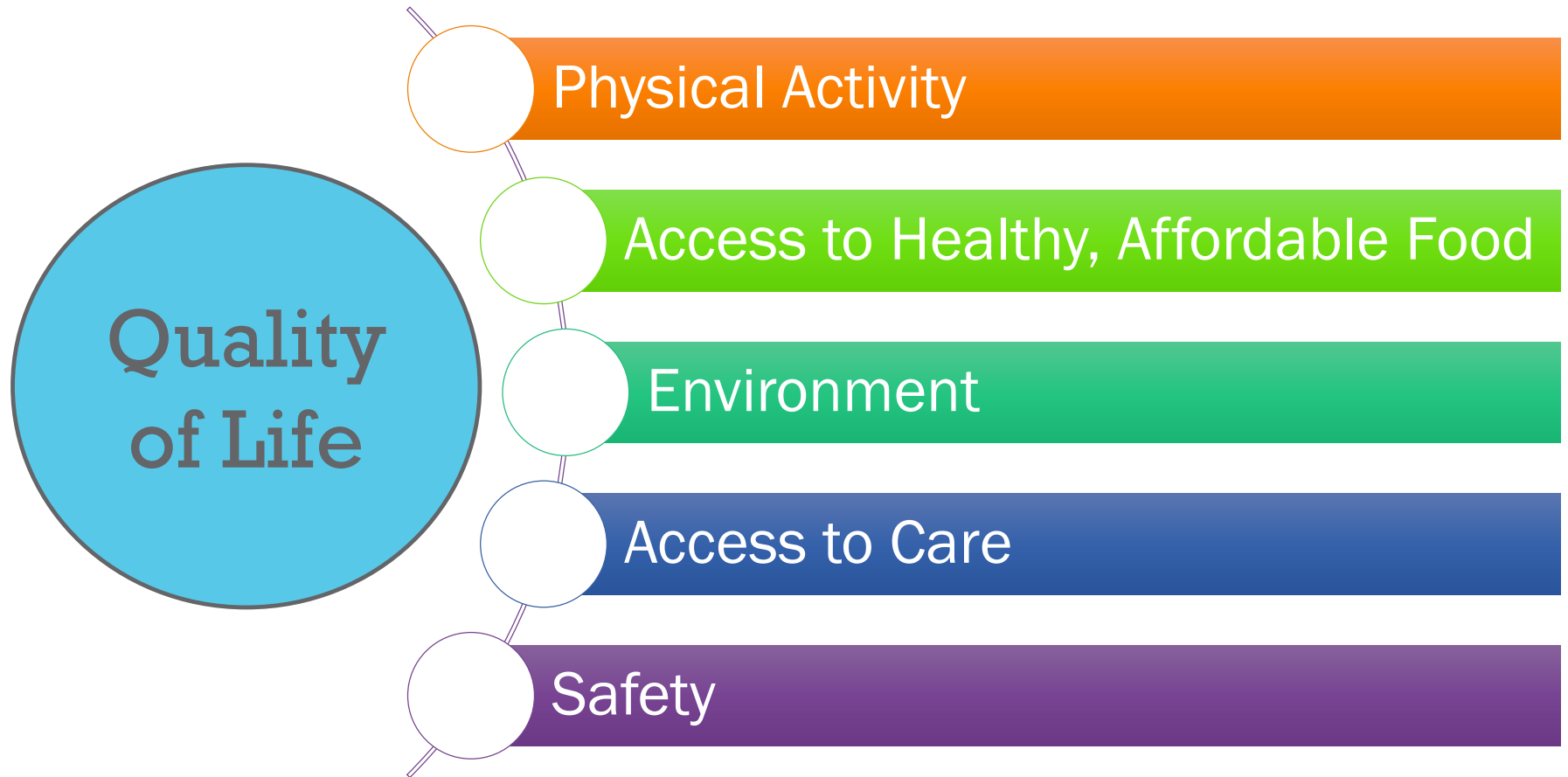
Policy

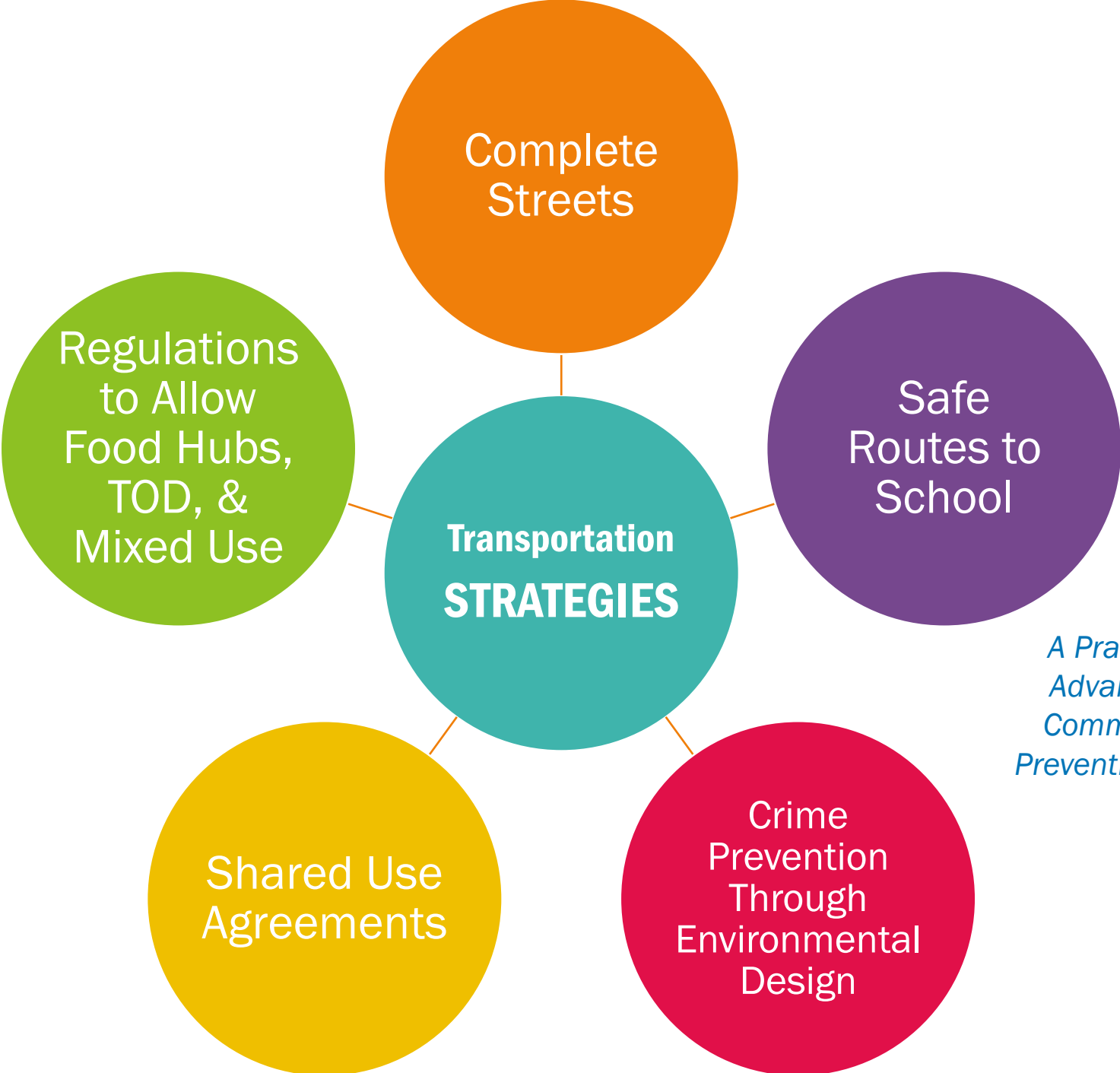
Process

Projects



Themes





**Source: CDC's
A Practitioner's Guide for
Advancing Health Equity:
Community Strategies for
Preventing Chronic Disease*

Policy



Policy Audit

Complete Streets Policy



Plan Audit Criteria



Plan



Health:
Yes,
Implied,
No



How?

Plan Audit: Health-Promoting Projects



5

Transportation
Improvement Program

27

Prioritized Project List

Draft Complete Streets Policy



- ❑ Health outcomes and economic vitality
- ❑ Policy, Systems, and Environmental change strategies to produce a regional Complete Streets network

Process



Planning Process



Cross-Sector Collaborations





Nearly \$600 million

to be invested in health-related projects

- 9.3% of total TIP
- 27% of TIP without Toll Projects, I-4, and Aviation Projects

Cross-Sector Collaborations



Health in Transportation Projects

- Corrine Drive Complete Streets Study
- Central Avenue Complete Streets Study

Transportation in Health Planning Process

- Community Health Improvement Plan

Community Projects:

- HUD Choice Planning initiative in Goldsboro

Projects



Complete Streets Pilot Project



- Test draft policy
- Test how to incorporate health at start of planning process



Developing the Scope



FDOT corridor
planning
scope



Complete
Streets
language



Health data,
indicators &
stakeholders

Health Data and Stakeholders



Stakeholders

Florida Department of Health-
Orange County

Florida Hospital's Office of
Community Impact

Indicators and Data Sources

Bicycle and Pedestrian Exposure Rate

Bicycle and Pedestrian Fatality Rate

Hospitalizations/ED Visits (AHCA)

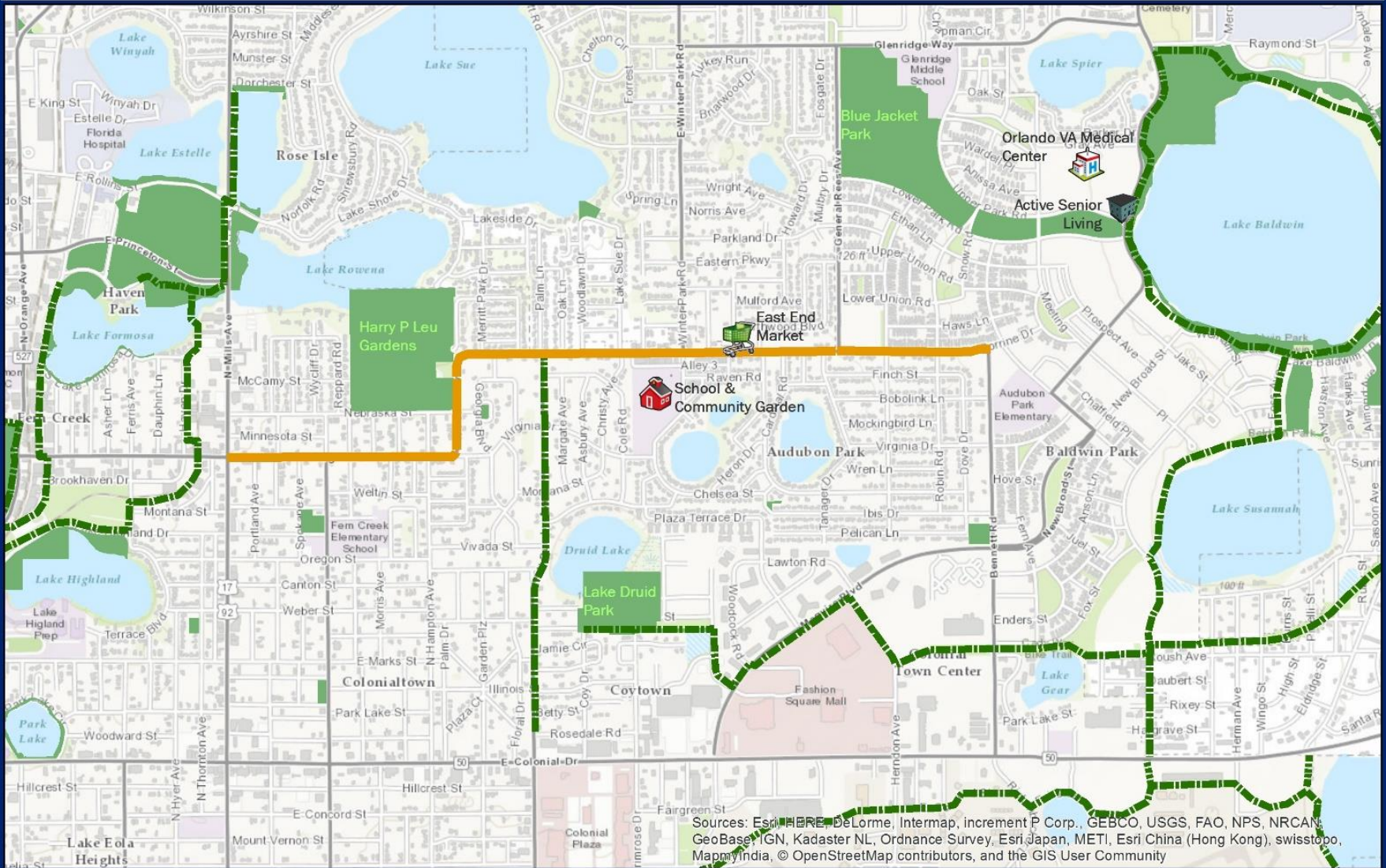
Travel Characteristics (AirSage)

Orange County Public Schools

Air Quality




2016 Community Health Needs Assessment

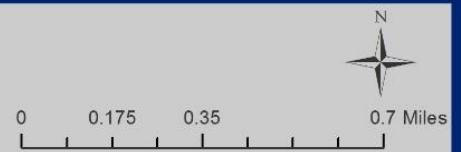
Corrine Drive



Sources: Esri, HERE, DeLorme, Intermap, increment P Corp., GEBCO, USGS, FAO, NPS, NRCAN, GeoBase, IGN, Kadaster NL, Ordnance Survey, Esri Japan, METI, Esri China (Hong Kong), swisstopo, MapmyIndia, © OpenStreetMap contributors, and the GIS User Community

Legend

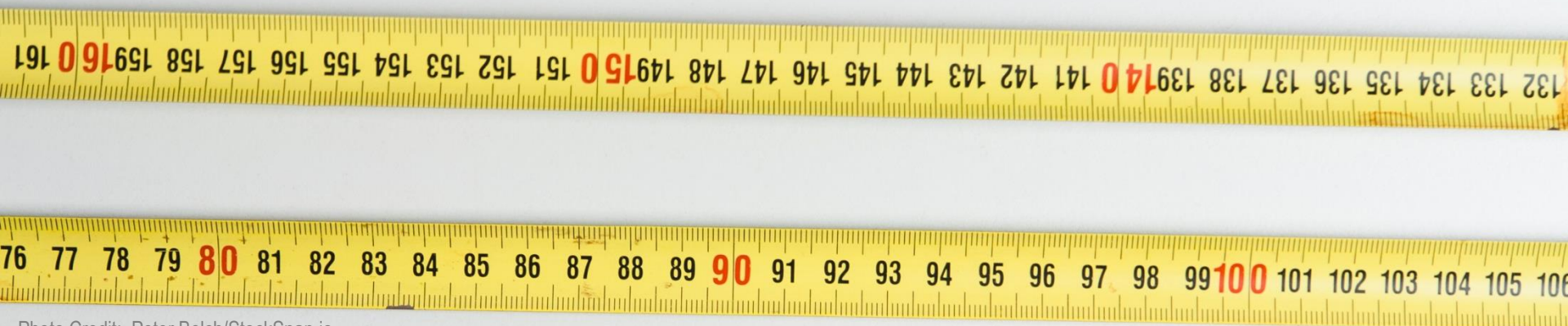
-  Corrine Drive
-  Parks
-  Shared Use Paths



Measuring Success



- Short- and long-term implementation
- Evaluation
 - Policy language and implementation
 - Freight-Health-Complete Streets
 - Performance measures



Thank You

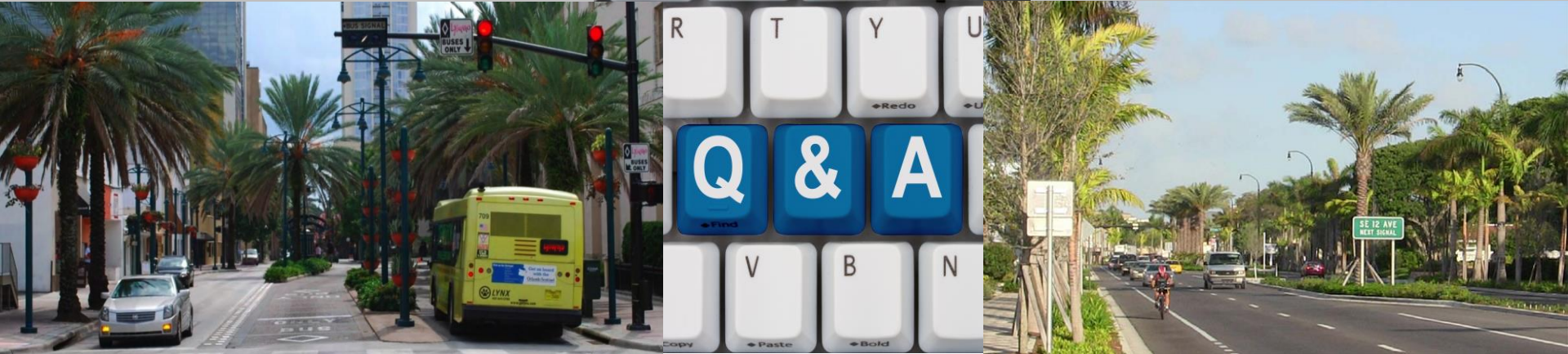
ewhitton@metroplanorlando.com

MetroPlanOrlando.com | (407) 481-5672

250 S. Orange Ave., Suite 200, Orlando, FL 32801



Questions and Answers



More Information

Please visit

<http://www.fdot.gov/planning/Policy/BikePed/webinar.shtm>

For Webinar Recordings and
Follow-up Questions
Contact Melanie Weaver Carr

Melanie.carr@dot.state.fl.us

850-414-4817