

# Approach Terminal Identification Guide

MELT Pg. 2 & 3



CAT350 Pg. 4 & 5



ET 2000 Pg. 6 & 7



ET Plus Pg. 6 & 7



SKT Pg. 8 & 9



FLEAT Pg. 8 & 10



SoftStop Pg. 11



SRT Pg. 12



X-Lite Pg. 13



X-Tension Pg. 14

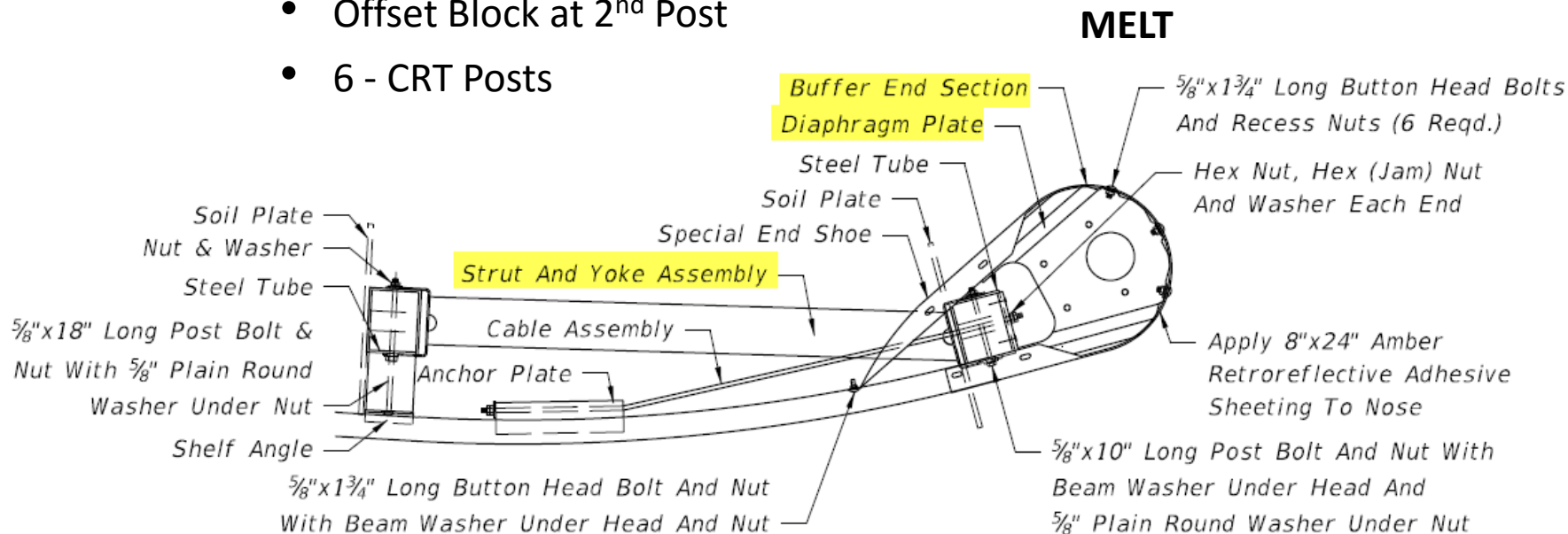


## Approach Terminal (End Anchorage Assembly)

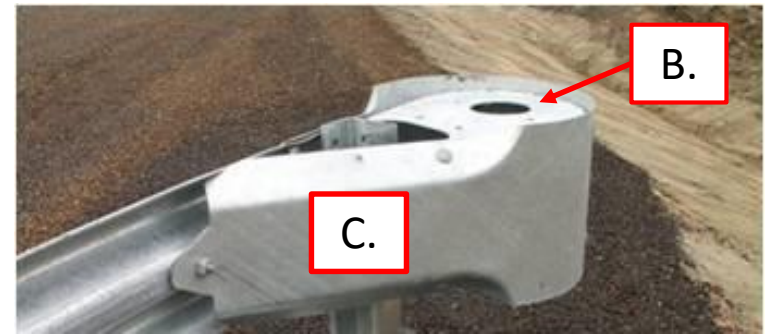
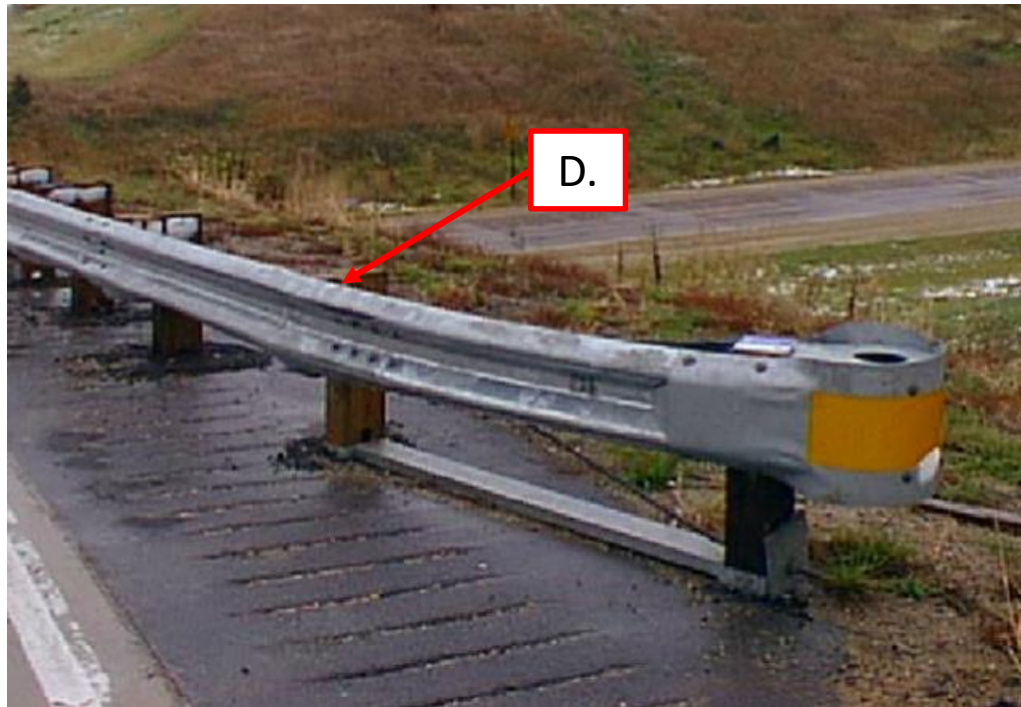
### Modified Eccentric Loader Terminal (MELT) – Non-Proprietary

#### Prominent Features:

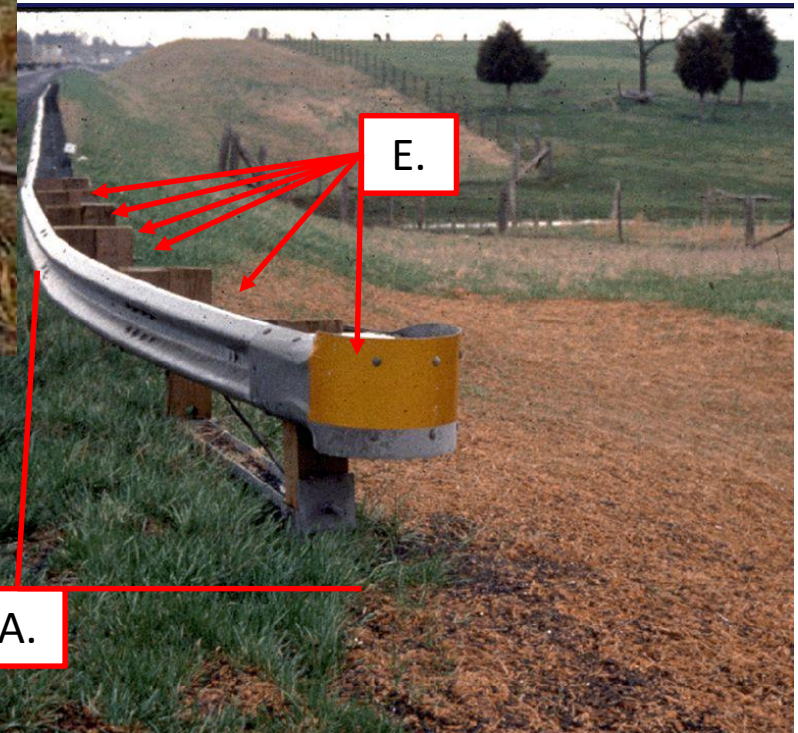
- 27" Guardrail Only
- Flared Installation
- Diaphragm Plate
- Full Return Buffered End Section
- C-Channel Strut
- Offset Block at 2<sup>nd</sup> Post
- 6 - CRT Posts



## Modified Eccentric Loader Terminal (MELT)



(Steel Post not used by FDOT)



- A. Flared Installation
- B. Diaphragm Plate
- C. Full Return Buffered End Section
- D. Offset Block at 2<sup>nd</sup> Post
- E. 6 – Wood CRT Posts

## Approach Terminal (End Anchorage Assembly)

Crash Attenuating Terminal

(CAT 350) – Proprietary

Prominent Features:

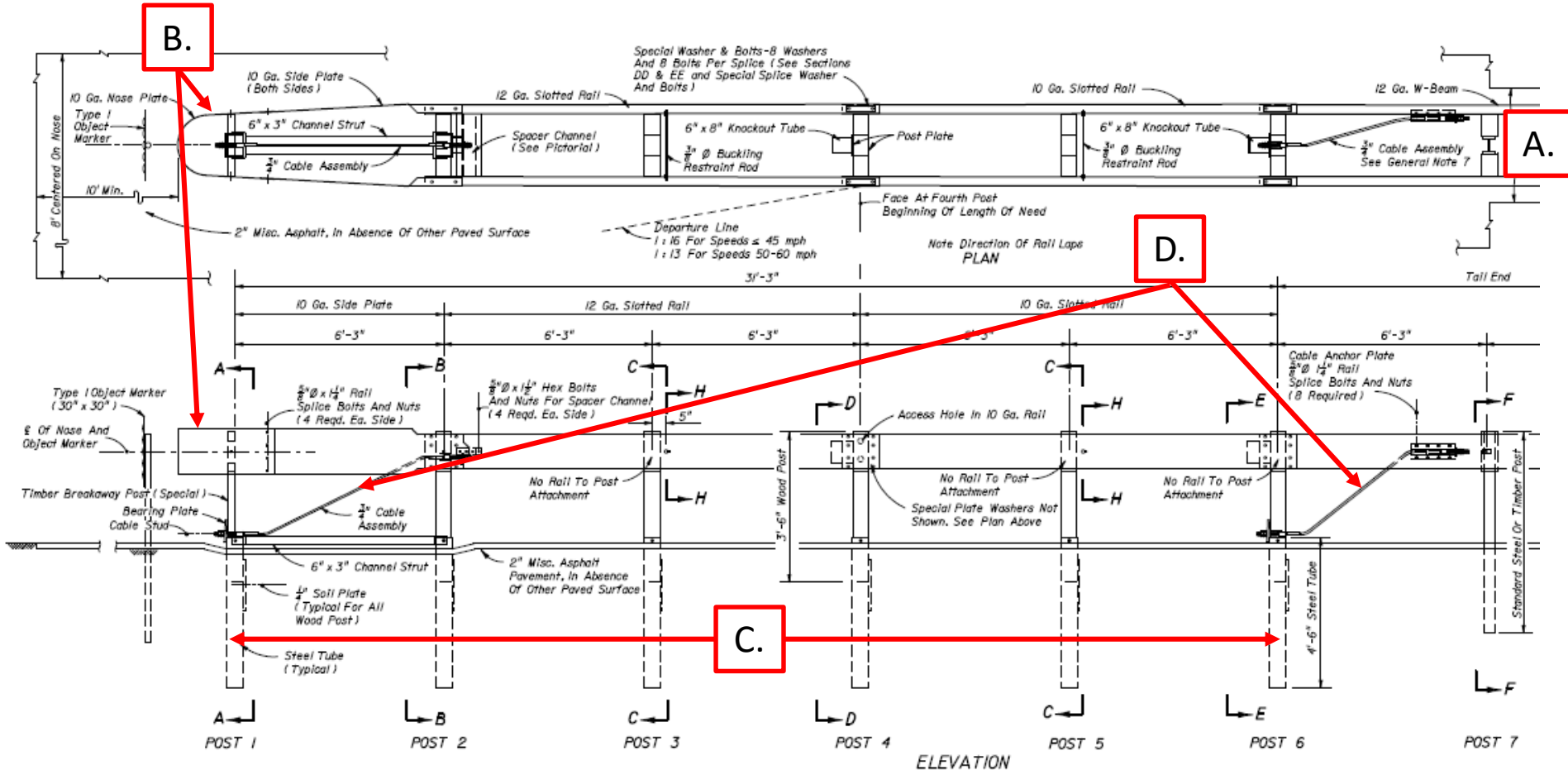
- 27" Guardrail Only
- Parallel Installation
- Double Faced Guardrail
- 6 – Steel Tube Foundations
- 2 – Anchorage Cables



**CAT 350**



## Crash Cushion Attenuating Terminal (CAT 350)



- A. Double Faced Guardrail
- B. Special Length Smooth Nose Plate
- C. 6 – Steel Tube Foundations
- D. 2 – Anchorage Cable Locations

## Approach Terminal (End Anchorage Assembly)

### Energy Absorbing Terminals

#### ET-2000 and ET-Plus – Proprietary

Trinity Highway Products, LLC.

#### Prominent Features:

- 27" Guardrail Only
- Extruding Rail Design
- Parallel Treatment
- Single Strut on Extrusion Head
- ET-2000
  - Square Head
  - C-Channel Post Strut
- ET-Plus
  - Rectangular Head
  - Flanges on Sides of Head Only
  - Angle Strut

ET-2000



ET-Plus



## Approach Terminal (End Anchorage Assembly)

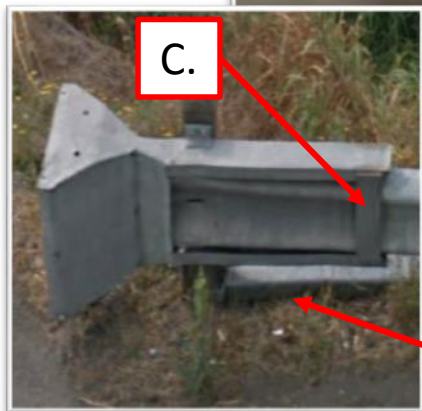
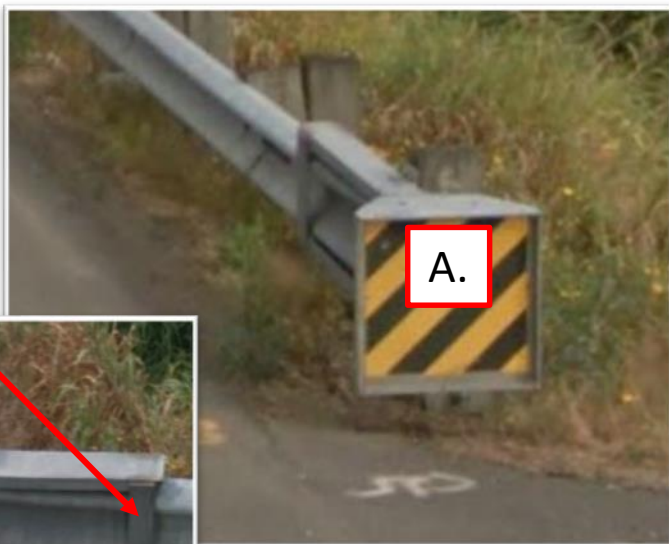
ET-2000 and ET-Plus – Proprietary

Trinity Highway Products, LLC.

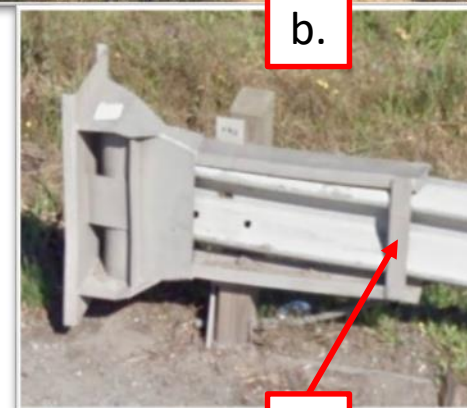
**ET-2000** Unique Features:

- A. Square Head
- B. C-Channel Post Strut
- C. Single Strut on Extrusion Head

**ET-2000**



**ET-Plus**



**ET-Plus** Unique Features:

- a. Rectangular Head
- b. Flanges on Sides of Head Only
- c. Single Angle Strut
- d. Single Strut on Extrusion Head

## Approach Terminal (End Anchorage Assembly)

### Energy Absorbing Terminals

#### SKT & FLEAT – Proprietary

Road Systems, Inc.

Unique Features:

- 27" & 31" Guardrail
- Extruding Rail Design
- Steel and Wood Post Options
- SKT (Sequential Kinking Terminal)
  - Parallel Treatment
  - Square Head
  - Rail Extrudes Away From Traffic Lanes
- FLEAT (Flared Energy Absorbing Terminal)
  - Flared Treatment
  - Somewhat Rectangular Head
  - Rail Extrudes Towards Traffic Lanes

SKT



FLEAT





## Approach Terminal (End Anchorage Assembly)

### SKT (Sequential Kinking Terminal)

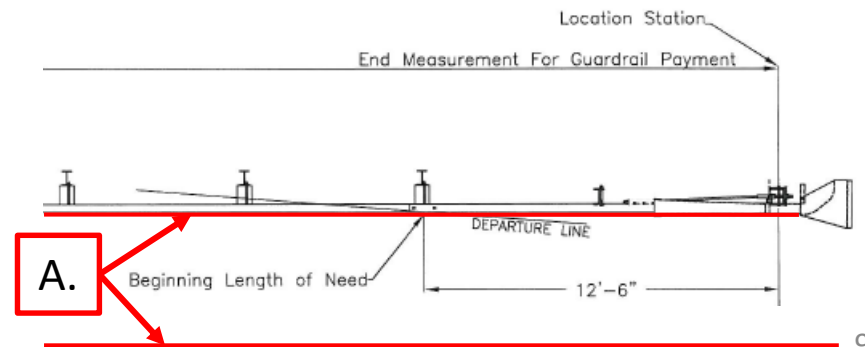
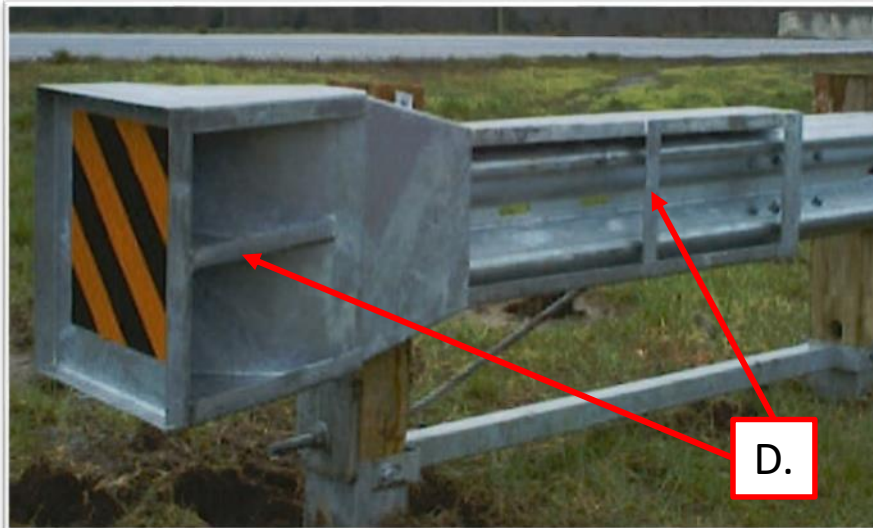
Road Systems, Inc.

Unique Features:

- A. Parallel Treatment
- B. Square Head
- C. Rail Extrudes Away From Traffic Lanes
- D. Secondary Struts in Head Unit



SKT



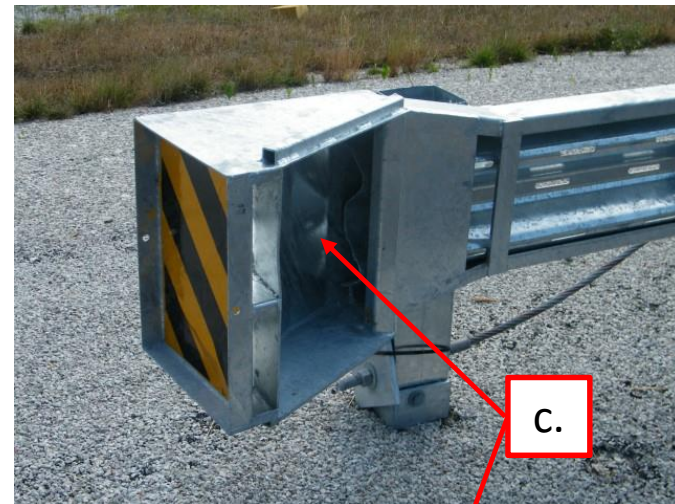
## Approach Terminal (End Anchorage Assembly)

### FLEAT (FLared E<sub>n</sub>ergy A<sub>b</sub>sorbing T<sub>e</sub>rmi<sub>n</sub>al)

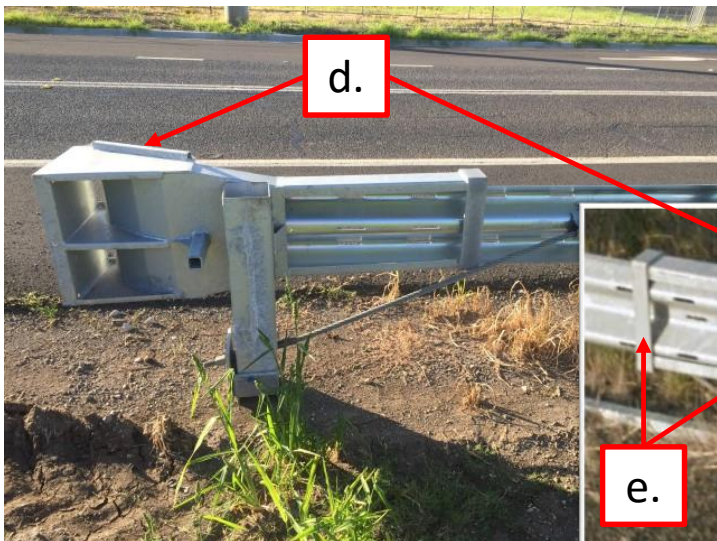
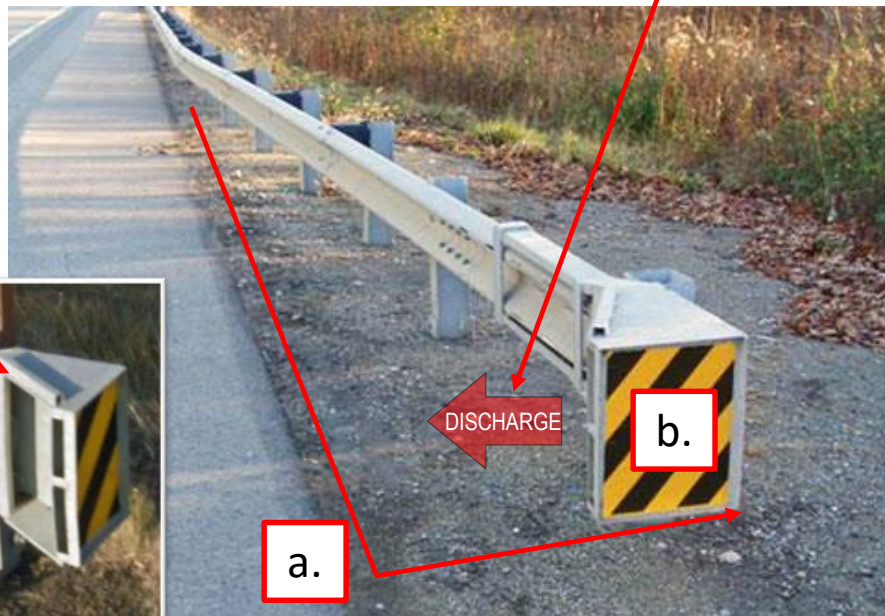
Road Systems, Inc.

Unique Features:

- a. Flared Treatment
- b. Somewhat Rectangular Head
- c. Rail Extrudes Towards Traffic Lanes
- d. Square Tube On Top Of Head
- e. Dual Struts on Head Unit



**FLEAT**



## Approach Terminal (End Anchorage Assembly)

### Energy Absorbing Terminals

SoftStop – Proprietary

Trinity Highway Products, LLC.

- 31" Guardrail Only
- Parallel Installations
- Steel Posts Only

Unique Feature:

- Tension Extrusion Head  
Chute Design
- Forward Anchorage



SoftStop



## Approach Terminal (End Anchorage Assembly)

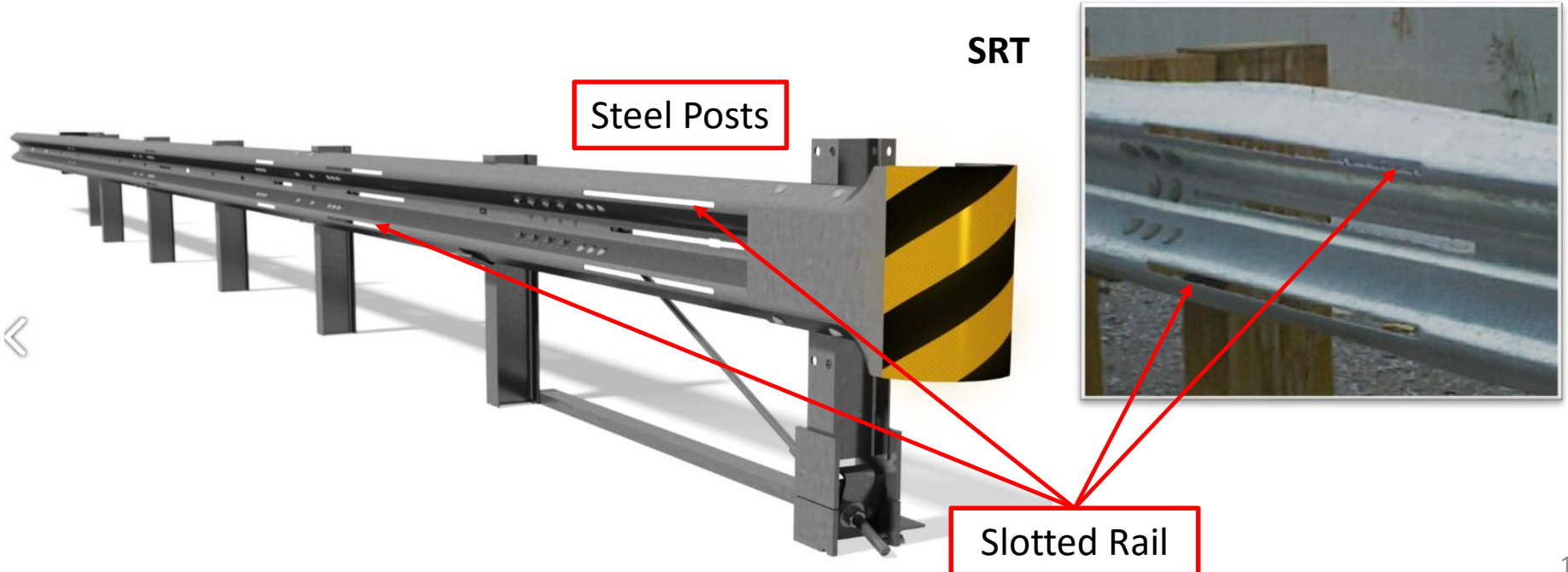
Slotted Rail Terminal (SRT) – Proprietary

Trinity Highway Products, LLC.

- 27" & 31" Guardrail
- Flared Installations
- Wood & Steel Post Options

Unique Feature:

- Slotted Rail



## Approach Terminal (End Anchorage Assembly)

X-Lite – Proprietary

Lindsay Transportation Solutions/Barrier Systems

- 27" & 31" Guardrail
- Flared & Parallel Installations
- Steel Post Only

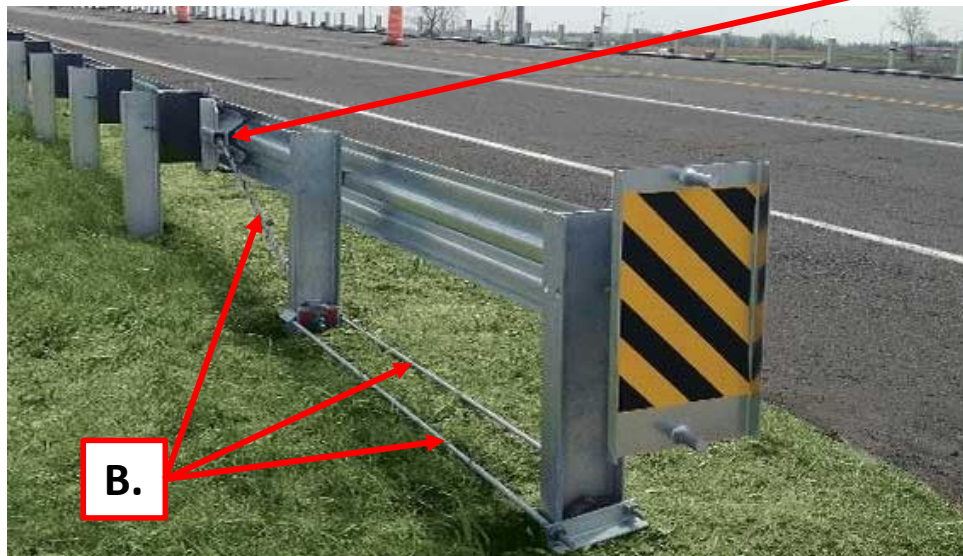
Unique Feature:

- A. Direct Mounted Head
- B. Tension Rods (in lieu of Strut)
- C. Slider Bracket

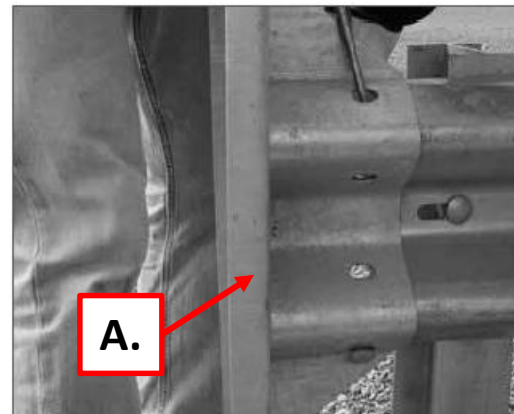


**C.**

**X-LITE**



**B.**



**A.**

## Approach Terminal (End Anchorage Assembly)

X-Tension – Proprietary

Lindsay Transportation Solutions/Barrier Systems

- 27" & 31" Guardrail
- Flared & Parallel Installations
- Steel & Wood Posts

Unique Feature:

- A. Direct Mounted Head
- B. Forward Anchorage
- C. Slider Bracket
- D. Duel Tension Cables

X-Tension

