



**NEPA Assignment:
OEM NEPA Review Process
for District Practitioners**




2016




Outline

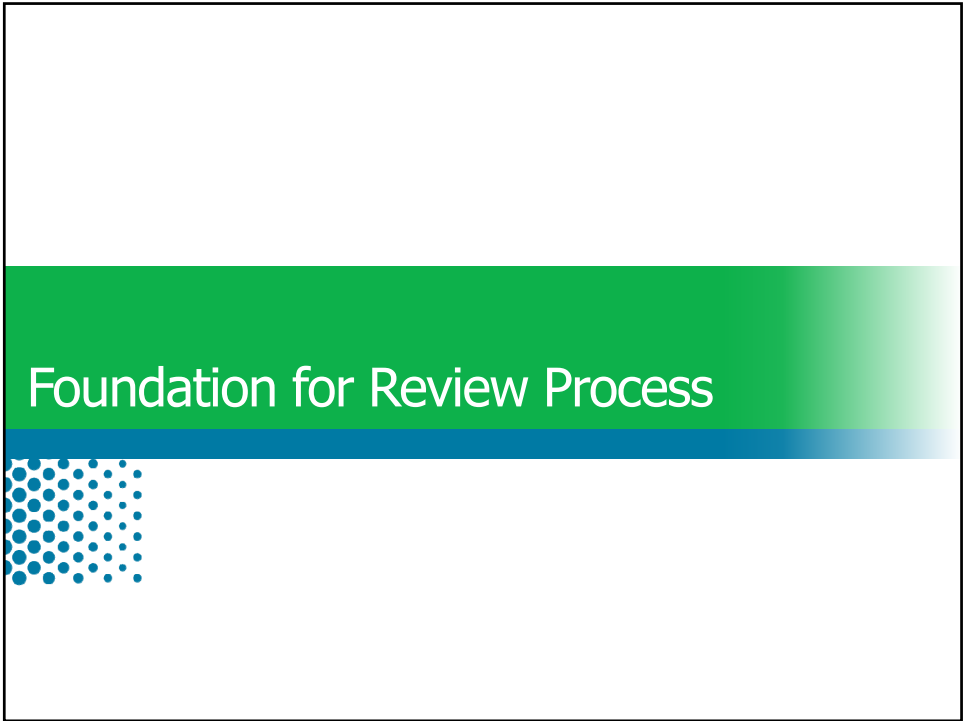
- Foundation for Review Process
- OEM Organization
- Your OEM Team
- Your District
- Environmental Review Process
- Quality Assurance and Quality Control



NEPA Assignment: OEM NEPA Review Process for District Practitioners



2





Laws and Regulations

Regulatory Authority


- Efficient Environmental Reviews for Project Decision Making; 23 United States Code (U.S.C.) § 139
- Integration of Planning and Environmental Review; 23 U.S.C. § 168
- Transportation Planning Studies and Project Development; 23 C.F.R. § 450 and 450.318
- Linking the Transportation Planning and NEPA Process; Appendix A of 23 Code of Federal Regulations (C.F.R.) 450

Fixing America's Surface Transportation (FAST) Act

- Additional direction for using planning decisions in NEPA
- Amends the Efficient Environmental Review Process to expedite project delivery; consultation requirements
- Transparency in environmental review process
 - National Permitting Dashboard
 - Public website of project review and permitting status



NEPA Assignment: OEM NEPA Review Process for District Practitioners



4

FHWA Guidance

Federal-aid Highway Program Policy and Guidance Center

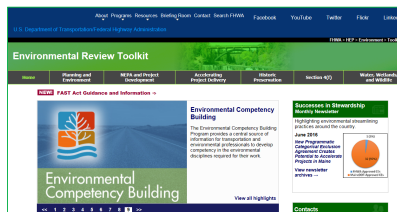
- <http://www.fhwa.dot.gov/pgc/>

Office of Planning Environment Website

- <http://www.fhwa.dot.gov/environment/>

Environmental Review Toolkit (and FAST Act Guidance)

- <https://www.environment.fhwa.dot.gov/index.asp>
- https://www.environment.fhwa.dot.gov/strmlng/environmental_provisions.asp#fast



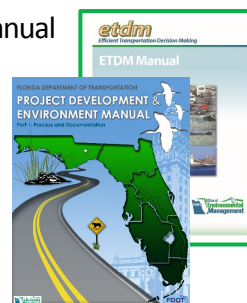
NEPA Assignment: OEM NEPA Review Process for District Practitioners

5



FDOT Manuals, Standards and Guidance

- Project Development and Environment (PD&E) Manual
- Efficient Transportation Decision Making (ETDM) Manual
- Design Standards
- Plans Preparation Manual (PPM)
- Interchange Access Request User's Guide
- Public Involvement Resources for the Practitioner
- Public Involvement Handbook
- Construction Project Administration Manual (CPAM)
- Guidance Documents and Training Materials available on FDOT's website under EMO Resources: <http://www.dot.state.fl.us/emo/resources.shtm>



NEPA Assignment: OEM NEPA Review Process for District Practitioners

6



Programmatic Agreements (PA)

Programmatic Agreement is a binding agreement between FDOT and other state and/or Federal agencies that streamline the environmental review and project delivery process.

- Project Specific: A PA that describes the action that will be taken in order to meet environmental compliance responsibilities
- Procedural: establishes a process through which compliance responsibilities will be met for an agency program, a category of projects or a particular type of resource
 - PA for Categorical Exclusions
 - PA for Section 106
 - PA for Interchange Access Requests



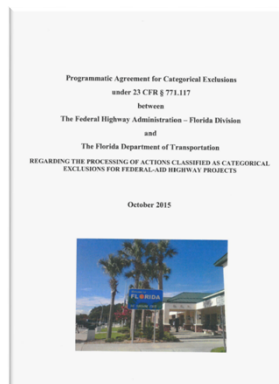
NEPA Assignment: OEM NEPA Review Process for District Practitioners

7



PA for Categorical Exclusions

- On the effective date of the NEPA Assignment Program, the existing PA is suspended as FDOT assumes authority for CE approvals



NEPA Assignment: OEM NEPA Review Process for District Practitioners

8



PA for Section 106

PA among FHWA, Advisory Council on Historic Preservation, the Florida Division of Historic Resources and FDOT Regarding Implementation of the Federal-Aid Highway Program in Florida

- Specifies procedures for resolving conflicts with external agencies
- Under NEPA Assignment, FDOT assumes FHWA's role in the PA
- Section III – Responsibilities and General Requirements of the FDOT



NEPA Assignment: OEM NEPA Review Process for District Practitioners

9



PA for Interchange Access Requests

PA between the FHWA Division and the FDOT Regarding the Review and Approval of Specific Types of Changes in Interstate-system Access

- Moving Ahead for Progress in the 21st Century (MAP-21) Section 1318 (d) – Programmatic Agreements
 - Allows FHWA to delegate to FDOT the review and approval of certain IAR documents
 - Requires FDOT to meet stipulations in the PA
 - Applies to projects that qualify
 - No changes to required documentation
 - NEPA must still be completed for final approval



NEPA Assignment: OEM NEPA Review Process for District Practitioners

10



PA for Interchange Access Requests

IARs Eligible for PA process

- New and major modifications to service interchanges outside Transportation Management Areas (TMAs)
- Modifications to service interchanges inside TMAs
- Completion of partial interchanges
- Interchange Operation Analysis Reports (IOARs) will qualify similar to Interchange Modification Reports (IMRs)



NEPA Assignment: OEM NEPA Review Process for District Practitioners

11



PA for Interchange Access Requests

IARs Not Eligible for PA process

- New and modified system to system interchanges
- New service interchanges inside of TMAs
- New partial interchanges
- Closure of access points
- Locked gate access
- Projects with EISs
- Projects with issues of National Policy or Substantial Controversy
- Any other Project required by FHWA
- Completion of basic movements at existing partial interchanges



NEPA Assignment: OEM NEPA Review Process for District Practitioners

12





A New Logo A Video Break

<https://www.google.com/url?sa=t&rct=j&q=&esrc=s&source=web&cd=7&cad=rja&uact=8&ved=0ahUKewjDos3lnZTPAhUjLcAKHU4dBiyQtwlILTAG&url=https%3A%2F%2Fwww.youtube.com%2Fwatch%3Fv%3DUfTBdqF5Vgw&usg=AFQjCNHq425FagNyUHII38ZdjJ1tVvDMA>

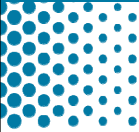


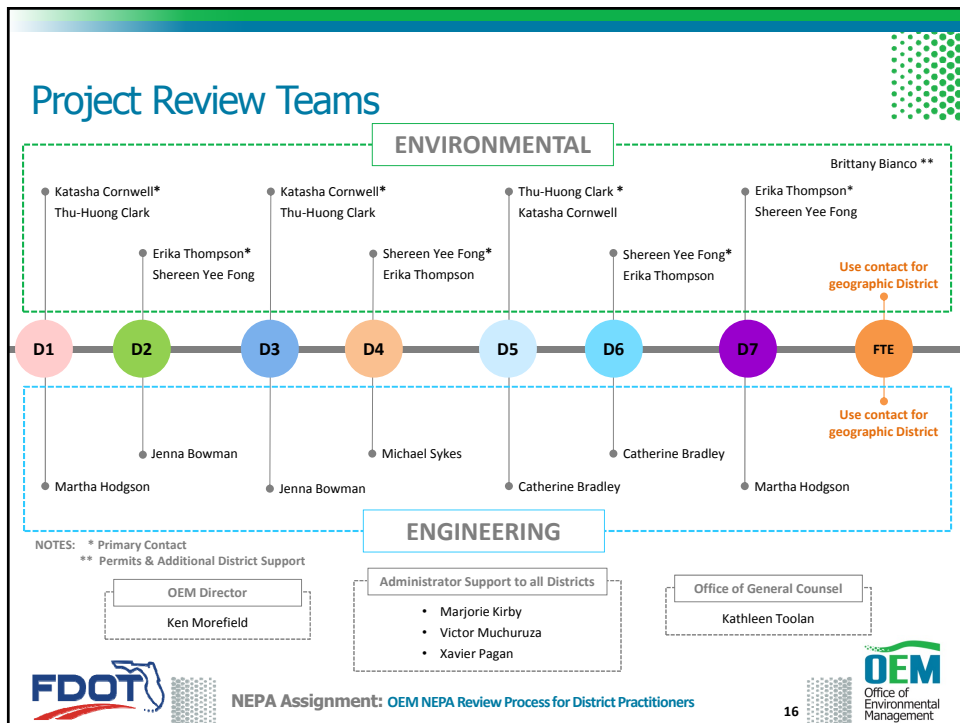
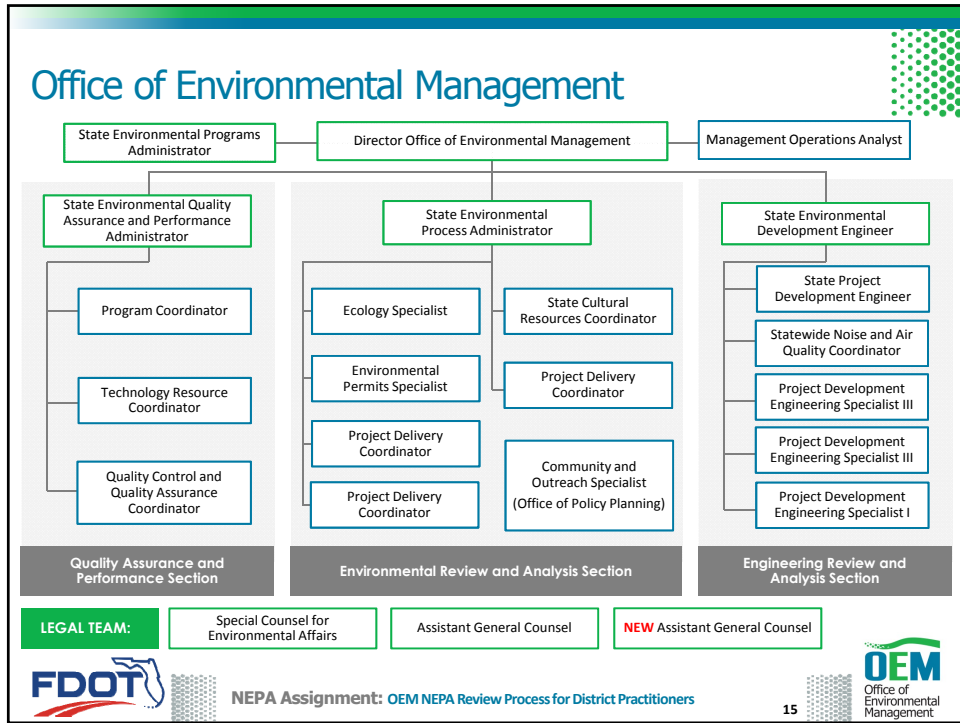
NEPA Assignment: OEM NEPA Review Process for District Practitioners



13

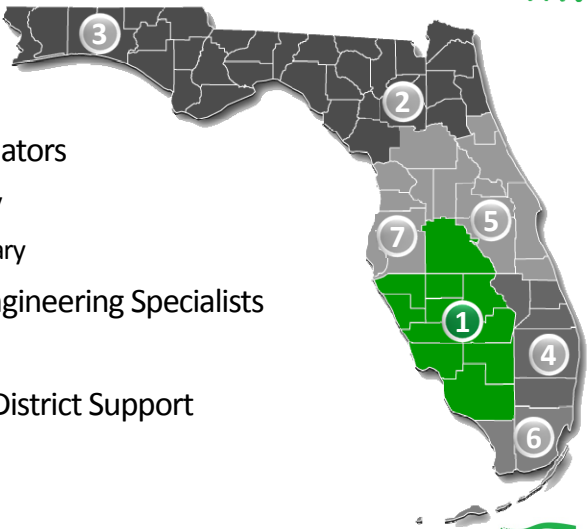
OEM Organization





Your OEM Team

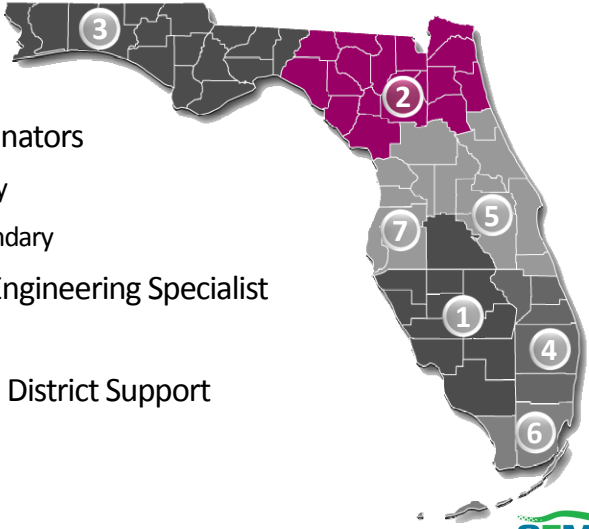
OEM Points of Contacts and Lead Review Team



- DISTRICT 1**
 - Project Delivery Coordinators
 - Katasha Cornwell - Primary
 - Thu-Huong Clark - Secondary
 - Project Development Engineering Specialists
 - Martha Hodgson
 - Permits and Additional District Support
 - Brittany Bianco



FDOT NEPA Assignment: OEM NEPA Review Process for District Practitioners **OEM** Office of Environmental Management 18

OEM Points of Contacts and Lead Review Team



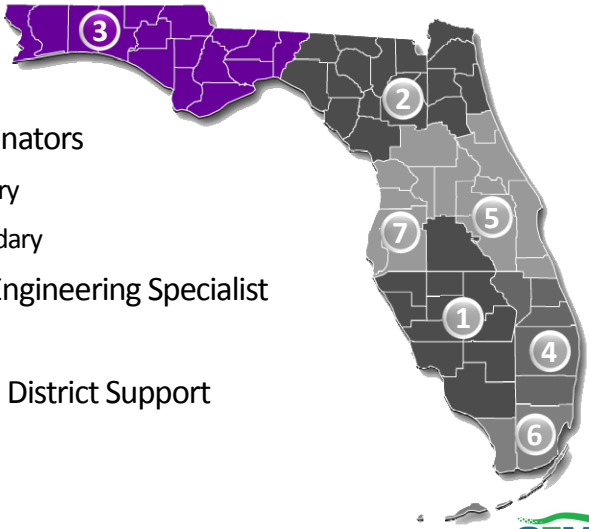
DISTRICT 2

- Project Delivery Coordinators
 - Erika Thompson - Primary
 - Shereen Yee Fong - Secondary
- Project Development Engineering Specialist
 - Jenna Bowman
- Permits and Additional District Support
 - Brittany Bianco



NEPA Assignment: OEM NEPA Review Process for District Practitioners 19

OEM Points of Contacts and Lead Review Team



DISTRICT 3

- Project Delivery Coordinators
 - Katasha Cornwell - Primary
 - Thu-Huong Clark - Secondary
- Project Development Engineering Specialist
 - Jenna Bowman
- Permits and Additional District Support
 - Brittany Bianco

NEPA Assignment: OEM NEPA Review Process for District Practitioners 20

OEM Points of Contacts and Lead Review Team

DISTRICT 4

- Project Delivery Coordinators
 - Shereen Yee Fong - Primary
 - Erika Thompson - Secondary
- Project Development Engineering Specialist
 - Michael Sykes
- Permits and Additional District Support
 - Brittany Bianco

NEPA Assignment: OEM NEPA Review Process for District Practitioners

21

OEM Points of Contacts and Lead Review Team

DISTRICT 5

- Project Delivery Coordinators
 - Thu-Huong Clark - Primary
 - Katasha Cornwell - Secondary
- Project Development Engineering Specialists
 - Catherine Bradley
- Permits and Additional District Support
 - Brittany Bianco

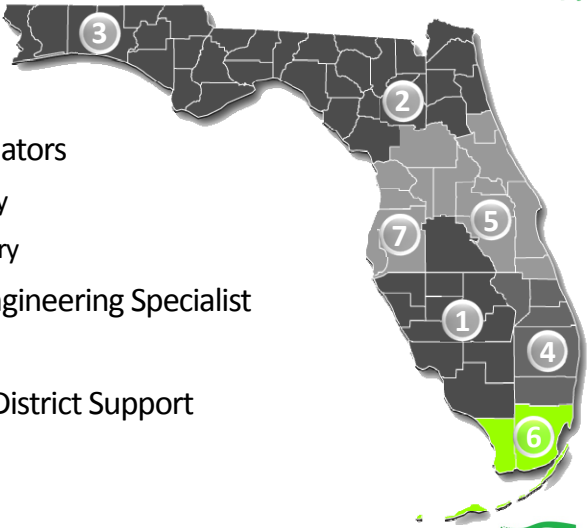
FLORIDA'S TURNPIKE

- Use contacts for geographic District

NEPA Assignment: OEM NEPA Review Process for District Practitioners

22

OEM Points of Contacts and Lead Review Team

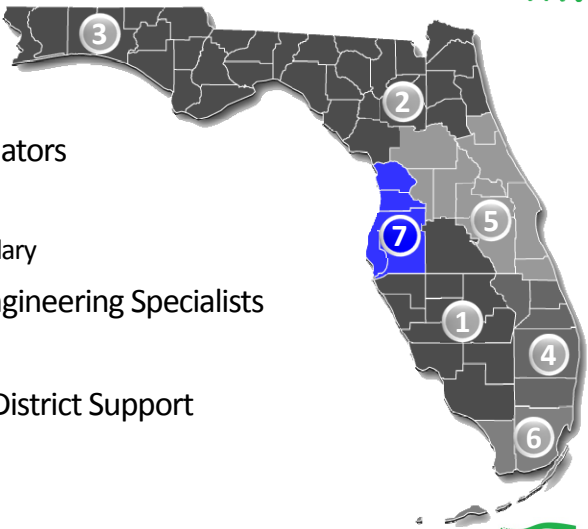


DISTRICT 6

- Project Delivery Coordinators
 - Shereen Yee Fong - Primary
 - Erika Thompson - Secondary
- Project Development Engineering Specialist
 - Catherine Bradley
- Permits and Additional District Support
 - Brittany Bianco

FDOT NEPA Assignment: OEM NEPA Review Process for District Practitioners **OEM** Office of Environmental Management 23

OEM Points of Contacts and Lead Review Team



DISTRICT 7

- Project Delivery Coordinators
 - Erika Thompson - Primary
 - Shereen Yee Fong - Secondary
- Project Development Engineering Specialists
 - Martha Hodgson
- Permits and Additional District Support
 - Brittany Bianco

FDOT NEPA Assignment: OEM NEPA Review Process for District Practitioners **OEM** Office of Environmental Management 24

OEM and District Communication

Project Kick-off Meeting

- Communicate mutual expectations about project
- Discuss review schedule and document review milestones
- District provides project summary and issue discussion
- Schedule monthly coordination meetings

Coordination Meetings

- Review status of engineering, environmental process and public involvement activities
- Get ahead of issues and formulate a plan
- Document submittals
- Project schedule updates

District and Project Site visits



NEPA Assignment: OEM NEPA Review Process for District Practitioners

25



Additional Collaboration

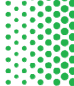

- Statewide Acceleration and Transformation (SWAT) Kick-off Meeting (Additional training to be provided at a later date)
- Alternative Corridor Evaluation (ACE) process, range of Alternatives
- ETDM Programming Screen / Class of Action evaluation
- PD&E Scope of Services Development
- At project initiation; once Consultant is on board
- At key Public Involvement Milestones
- Changes in Class of Action



NEPA Assignment: OEM NEPA Review Process for District Practitioners

26







A Teleconference in Real Life

A Video Break


https://youtu.be/DYu_bGbZiiQ



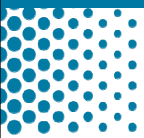
NEPA Assignment: OEM NEPA Review Process for District Practitioners



27



Your District



Districts' Role Prior to PD&E Phase

Similar to before NEPA Assignment with additional guidance and measures to ensure program success:

- MPO Coordination
- Work Program Development
- SWAT Planning and Kick-off meetings
- ETDM Planning and Programming screens
- Alternative Corridor Evaluation Process
- Recommending potential participating and cooperating agencies to OEM



NEPA Assignment: OEM NEPA Review Process for District Practitioners

29



Districts' Role Prior to PD&E Phase

- Propose planning products to be adopted as part of NEPA
- Propose Class of Action
- Advanced Notification
- PD&E Scope of Services
- Statement to be included on cover of planning products to be adopted:

“This planning product may be adopted into the environmental review process, pursuant to Title 23 USC § 168 of the state project development process.”



NEPA Assignment: OEM NEPA Review Process for District Practitioners

30



Interagency Coordination and Public Outreach

INTERAGENCY

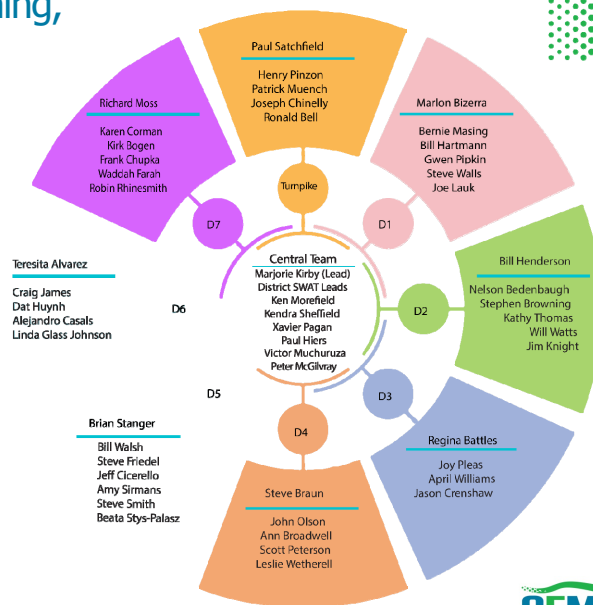
- ETDM provides initial groundwork
- District leads coordination and OEM provides support
- OEM will request formal consultation

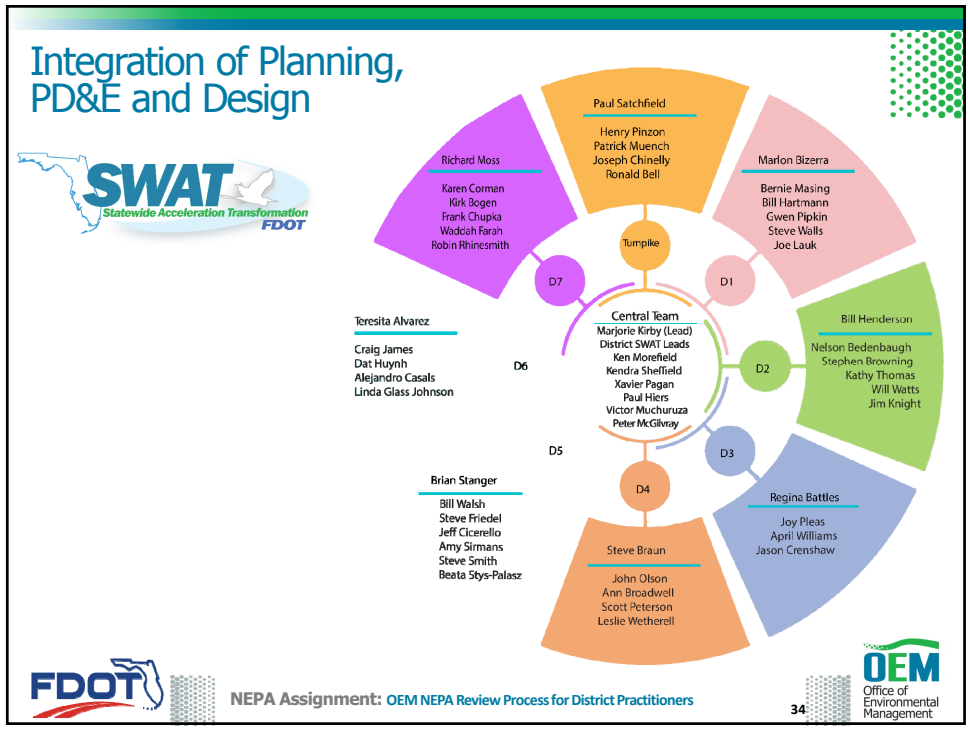
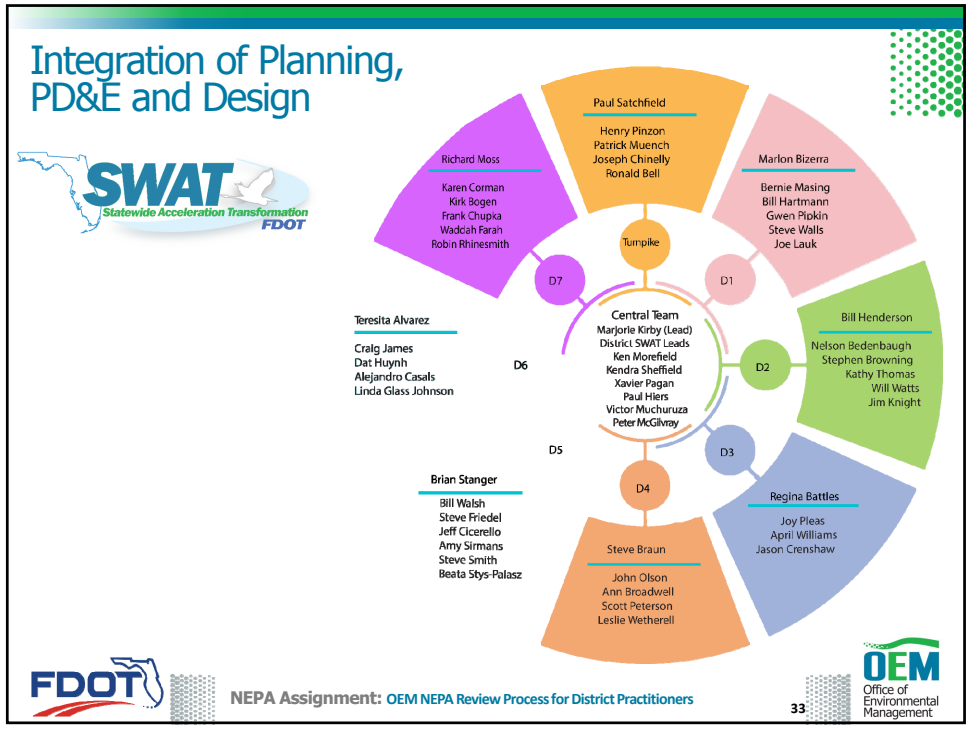
PUBLIC OUTREACH

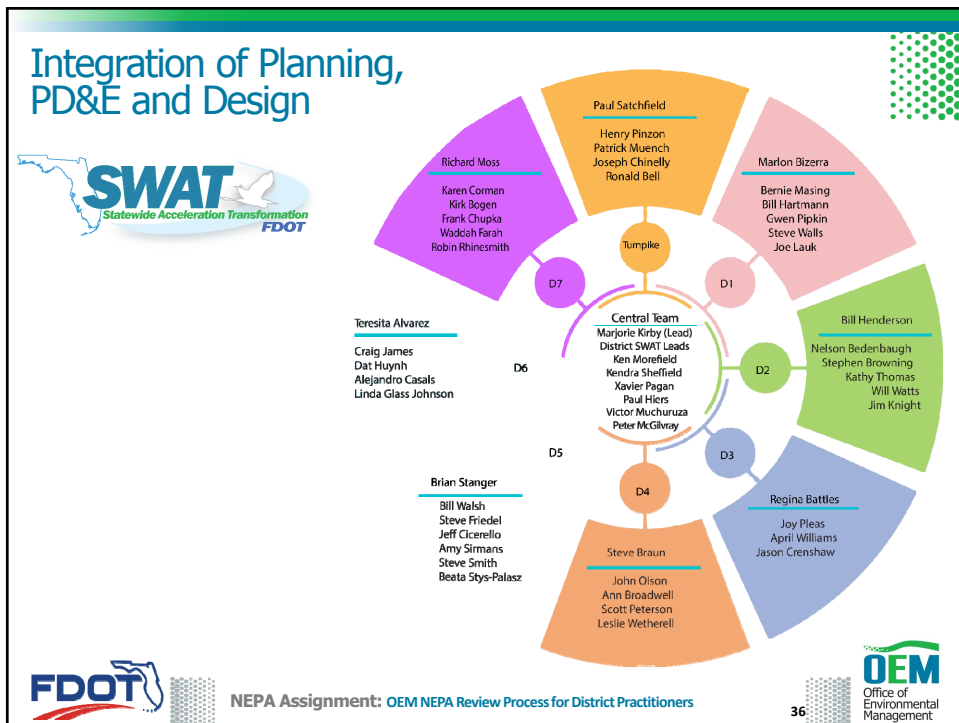
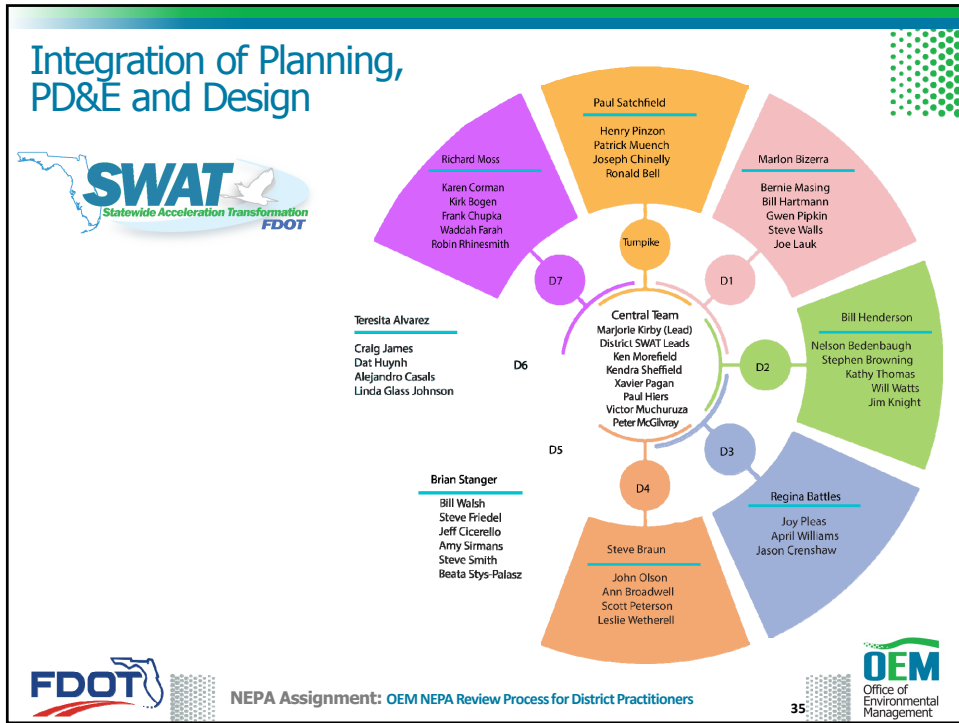
- OEM may attend public meetings
- OEM can provide support in response to comments, as needed

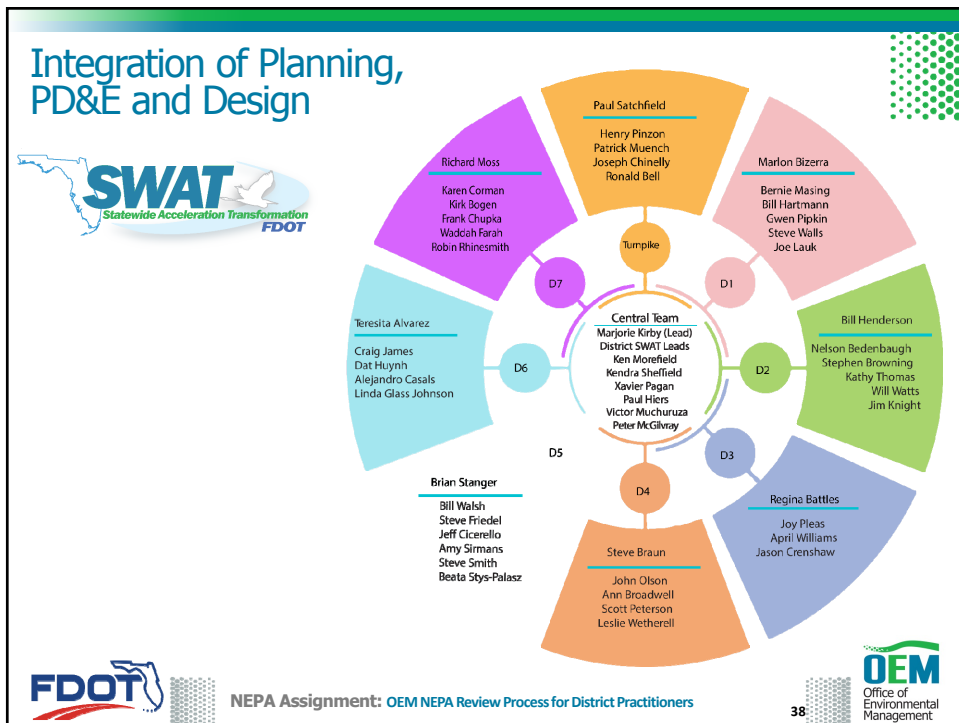
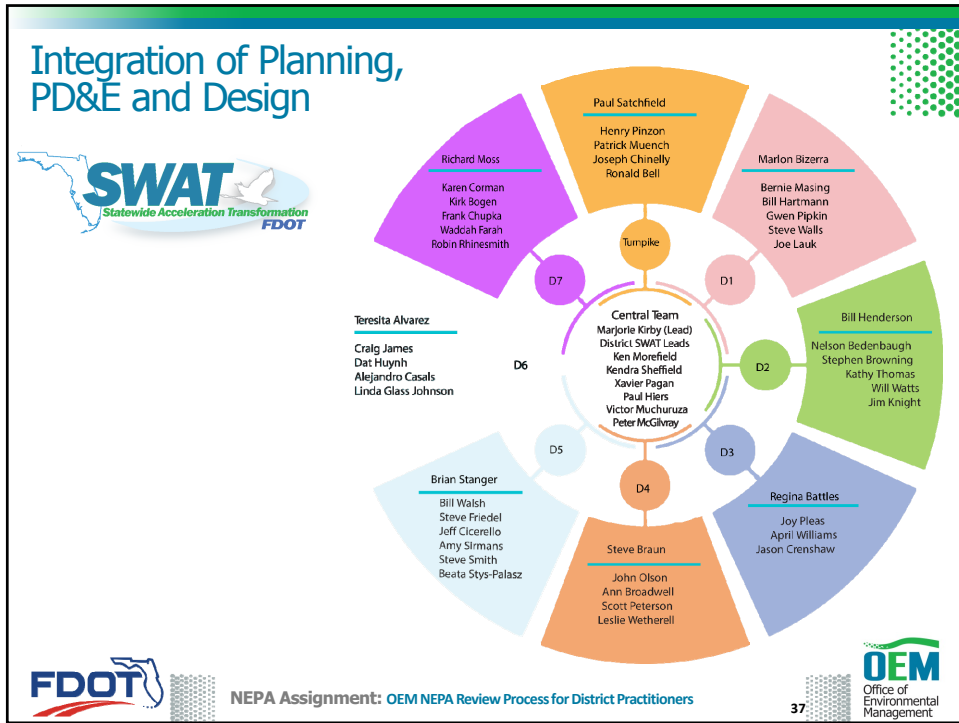


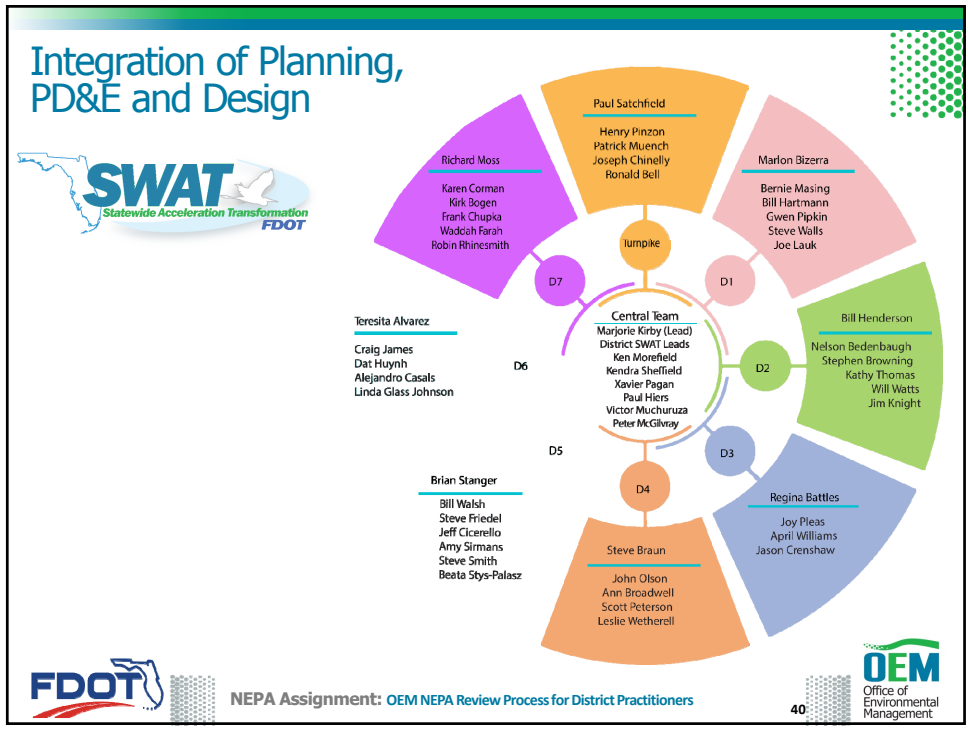
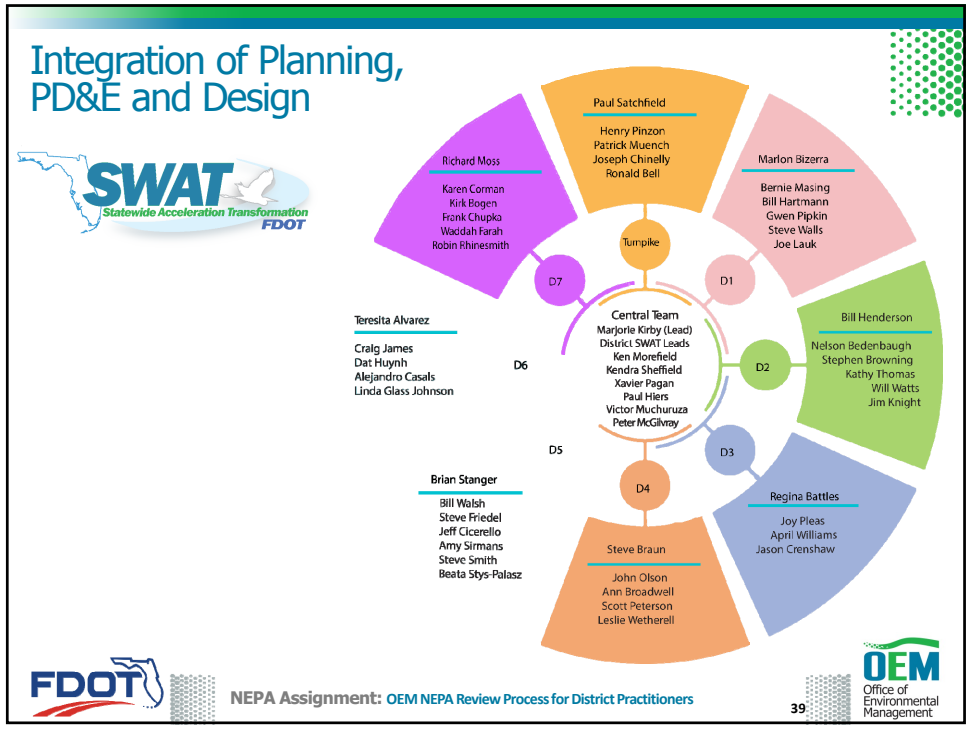
Integration of Planning, PD&E and Design

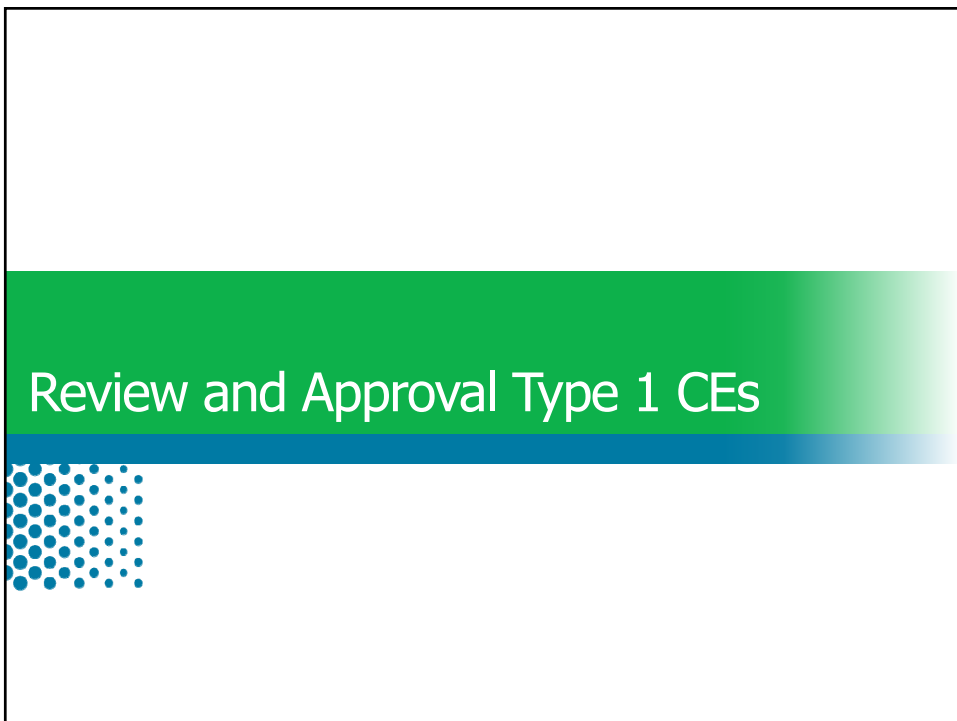
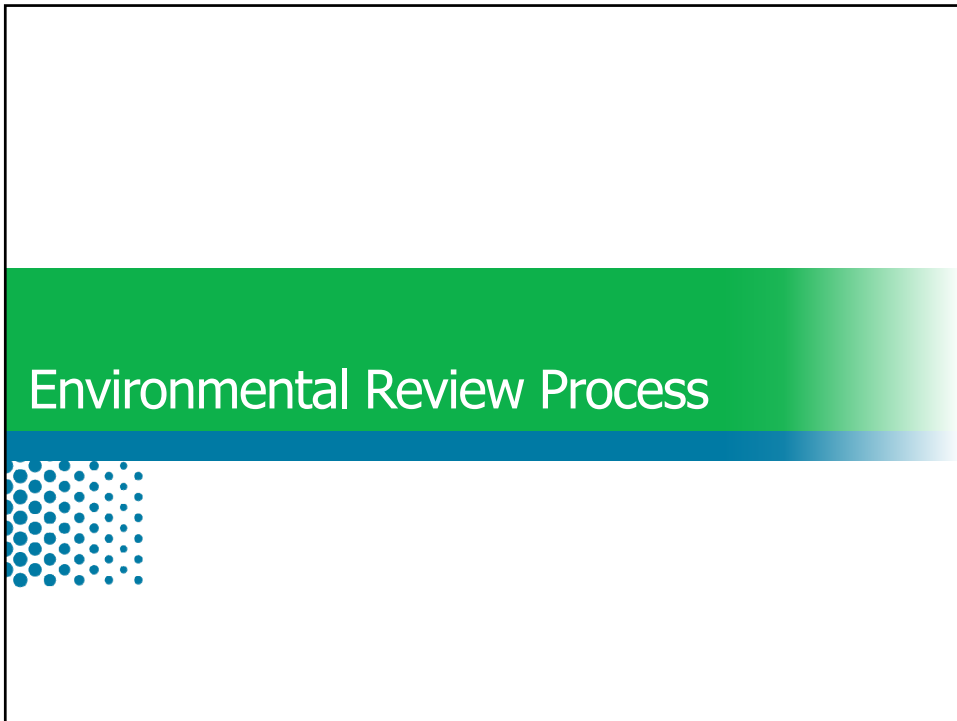












Type 1 Categorical Exclusion Overview

Qualify as Categorical Exclusions if meet certain criteria contained in:

- 23 C.F.R. § 771.117 (a)

Actions listed in:

- 23 C.F.R. § 771.117 (c), or
- 23 C.F.R. § 771.117 (d)
- Part 1, Chapter 2 – PD&E Manual



NEPA Assignment: OEM NEPA Review Process for District Practitioners

43



Type 1 Categorical Exclusions - Documentation

• Type 1 Categorical Exclusion Checklist

- Part 1, Chapter 2 - PD&E Manual
- Form No. 650-050-12

• Checklist is the Environmental Document

• Include supporting documentation in File

- Agency Coordination
- Technical Memos

• Minor Categorical Exclusion (MICE) process

STATE OF FLORIDA DEPARTMENT OF TRANSPORTATION TYPE 1 CATEGORICAL EXCLUSION CHECKLIST		REVISIONS
Financial Management No. _____		ENVIRONMENTAL MANAGEMENT SYSTEM
FAP No. _____		
CE Number: <input type="checkbox"/> (a), <input type="checkbox"/> (b), or <input type="checkbox"/> (c)		
Project Description (include project title, limits, and brief description of the proposed scope of work):		
Note: The criteria below also consider the conditions listed in 23 CFR 771.117(e) for the CEs described in 23 CFR 771.117(c)(26), (27) and (28).		
1	Will the action cause major adverse impacts on travel patterns, planned growth, land use for the area or access control?	YES <input type="checkbox"/> NO <input type="checkbox"/>
2	Will the action cause adverse impacts to air, noise or water quality?	<input type="checkbox"/>
3	Will the action cause wetland impacts that would require an individual Section 404 Permit from the U.S. Army Corps of Engineers (USACE) under the Clean Water Act, Section 404, 33 U.S.C. § 1344 and/or section 10 of the Rivers and Harbors Act?	<input type="checkbox"/>
4	Will the action cause impacts to navigation that would require an individual U.S. Coast Guard (USCG) Bridge Permit?	<input type="checkbox"/>
5	Will the action cause impacts greater than minimal floodplain encroachments, which will affect flood heights or base floodplain limits?	<input type="checkbox"/>
6	Will the action require construction in, across, or adjacent to a river designated as a component of or proposed for inclusion in, the National System of Wild and Scenic Rivers (for 23 CFR 771.117 (c)(26), (27) and (28))?	<input type="checkbox"/>
7	Will the action result in a determination other than (1) "no involvement," (2) "no effect," or (3) with concurrence from US Fish and Wildlife Service or National Marine Fisheries Service, as appropriate, "a "may affect but not likely to adversely affect" determination concerning impacts to endangered and threatened species and/or their critical habitat in accordance with Section 7 of the Endangered Species Act of 1973, as amended, 16 U.S.C. § 1536(a)-(d)?	<input type="checkbox"/>
8	Will the action require more than minor amounts of right-of-way and result in any residential or non-residential displacements?	<input type="checkbox"/>
9	Will the action impact any properties protected by Section 4(f) of the U.S. Department of Transportation Act, 49 U.S.C. § 3037? (NOTE: If it has been determined that Section 4(f) is not applicable in accordance with 23 CFR 774 and Part 2, Chapter 13 of the PD&E Manual then the answer to this question is no.)	<input type="checkbox"/>



NEPA Assignment: OEM NEPA Review Process for District Practitioners

44



NEPA Review for Type 1 CEs

- **Approvals of Type 1 CEs delegated to Districts**
 - Currently delegated; no change
 - Districts responsible for internal Quality Assurance / Quality Control
 - Review and Approval is **NOT REQUIRED** from OEM; however OEM can provide support as needed
- **Document uploaded to the State Wide Environmental Project Tracker (SWEPT)**



NEPA Assignment: OEM NEPA Review Process for District Practitioners

45



Type 1 CEs in SWEPT

The screenshot displays the SWEPT interface with the following details:

- Project Name:** TAMARAC BIKEWAY WALKWAY SYSTEM (PHASE 3) VARIOUS LOCATION
- District:** FDOT District 4
- County Name:** Broward County
- Federal-Aid Program (FAP) Number:** 886-222-A
- CE Activity Type:** (c) (3) Construction of bicycle and pedestrian lanes, paths, and facilities.

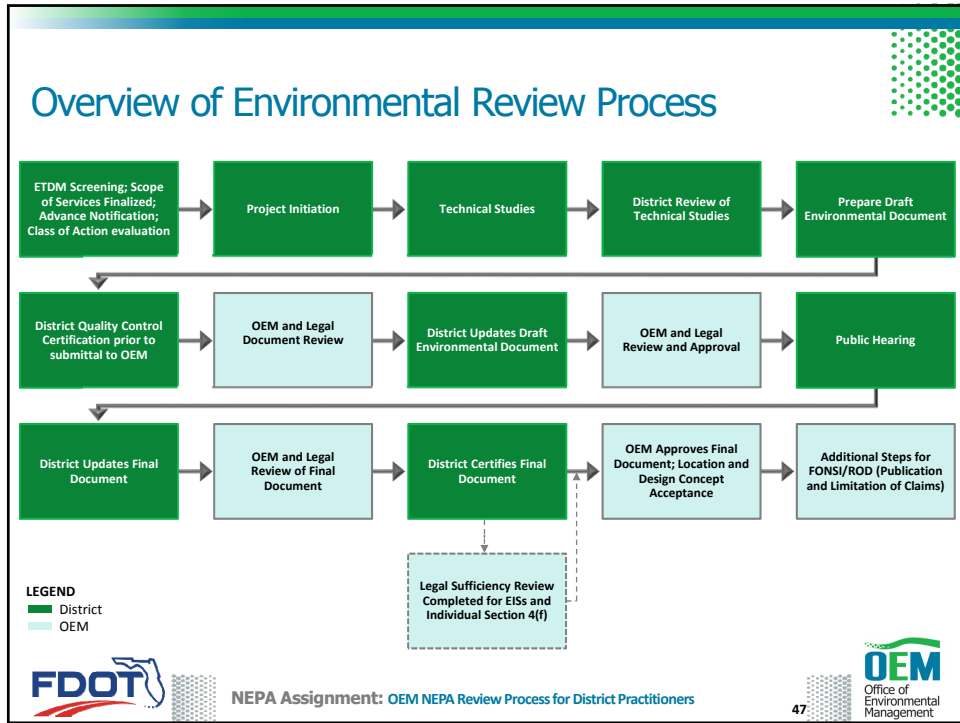
Question	Response	Documentation
1. Will the action cause major adverse impacts on travel patterns, planned growth, land use for the area or access control?	No	1
2. Will the action cause adverse impacts to air, noise or water quality?	No	1
3. Will the action cause wetland impacts that would require an individual Section 404 Permit from the U.S. Army Corps of Engineers (USACE) under the Clean Water Act, Section 404.33 U.S.C. § 1344 and/or section 10 of the Rivers and Harbors Act?	No	1
4. Will the action cause impacts to navigation that would require an individual U.S. Coast Guard (USCG) Bridge Permit?	No	1
5. Will the action cause impacts greater than minimal floodplain encroachments, which will affect flood heights or base floodplain limits?	No	1
6. Will the action require construction in, across, or adjacent to a river designated as a component of, or proposed for inclusion in, the National System of Wild and Scenic Rivers (for 23 CFR 771.117 (c)(26), (27) and (28)?	No	1
7. Will the action result in a determination other than, (1) "no involvement," (2) "no effect," or (3) with concurrence from US Fish and Wildlife Service or National Marine Fisheries Service, as	No	1



NEPA Assignment: OEM NEPA Review Process for District Practitioners

46





Efficient Transportation Decision Making (ETDM)

ETDM Screening; Scope of Services Finalized; Advance Notification; Class of Action evaluation

14 Day Pre-Screening OEM Review

- Prior to release for ETAT review
- Project Description
- Purpose and Need
- Preliminary Environmental Discussion (PED)

Possible Outcomes

- Ok to proceed as is
- Ok to proceed with comments
- Not Ok to proceed, let's discuss

Advance Notification

NEPA Assignment: OEM NEPA Review Process for District Practitioners

48

Efficient Transportation Decision Making (ETDM)

**ETDM
Screening;
Scope of
Services
Finalized;
Advance
Notification;
Class of
Action
evaluation**

During ETDM Screening events


- OEM will not comment as a member of the Environmental Technical Advisory Team (ETAT)

Alternative Corridor Evaluation (ACE) Process


- OEM approves ACE Methodology Memorandum
- OEM approves ACE Report (ACER)

Alternatives

- OEM approves alternatives moving forward as well as alternatives being eliminated



NEPA Assignment: OEM NEPA Review Process for District Practitioners



49

Efficient Transportation Decision Making (ETDM)


**ETDM
Screening;
Scope of
Services
Finalized;
Advance
Notification;
Class of
Action
evaluation**

Cooperating and Participating Agencies


- District recommends; OEM formally invites

At conclusion of ETDM Screening event

- OEM approves Purpose and Need at Programming Screen
- OEM accepts Purpose and Need as “understood” in Planning



NEPA Assignment: OEM NEPA Review Process for District Practitioners




50

Scope of Services and Class of Action


**ETDM
Screening;
Scope of
Services
Finalized;
Advance
Notification;
Class of
Action
evaluation**

Scope of Services

- Prior to procuring PD&E Study, determine approach
- PD&E and Design can begin concurrently if preliminary design activities comply with 23 C.F.R. Part 771 and 40 C.F.R. 1500-1508
 - **CANNOT** limit choice of reasonable alternatives
 - **CANNOT** advance beyond 60% until Location Design Concept Acceptance (LDCA)
- OEM can review concurrent with Districts



NEPA Assignment: OEM NEPA Review Process for District Practitioners




51

Scope of Services and Class of Action


**ETDM
Screening;
Scope of
Services
Finalized;
Advance
Notification;
Class of
Action
evaluation**

Class of Action (COA)

- May be approved during ETDM or during PD&E phase
- Additional studies may be needed prior to finalizing COA
- MICE process



NEPA Assignment: OEM NEPA Review Process for District Practitioners



52

Project Initiation

Project Initiation

SWAT Kick-off Meeting after ETDM




- Identifies project activities based on scope
- Develops initial project schedule
 - FDOT project schedule templates
 - Project Schedule and Management (PSM) codes

Initiation Defined as

- Notice of Intent (NOI) issued for EISs
- PSM Codes for Type 2 and EA project schedules

During PD&E Study

- Project Consultant develops detailed schedule and updates periodically
- Primavera P3




   53

Project Initiation

Project Initiation

OEM Lead Review Team assigns

- Subject Matter Experts
- Office of General Counsel
- Planning staff



   54

Environmental Technical Studies

Technical Studies

Districts Conduct Environmental Technical Studies

- OEM requires concurrent review prior to Agency submittal
 - Natural Resources Evaluation (NRE)
 - Cultural Resources Assessment Survey (CRAS)
- OEM can review other environmental technical studies upon request

 **NEPA Assignment: OEM NEPA Review Process for District Practitioners**  55



Engineering Technical Studies

Technical Studies

District Review of Technical Studies

Districts Conduct Engineering Technical Studies

- OEM review after District QC
 - Project Traffic Analysis Report
 - Preliminary Engineering Report
- OEM can review other engineering technical studies upon request

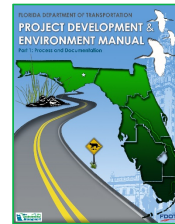
 **NEPA Assignment: OEM NEPA Review Process for District Practitioners**  56

Draft Environmental Document

Prepare Draft Environmental Document

District Prepares Environmental Document

- Follow the PD&E Manual
- Address Public, local government, agency comments and tribal comments
- Reference technical studies
- Include Standard statements as applicable
- Include project commitments



NEPA Assignment: OEM NEPA Review Process for District Practitioners

57



District Quality Control Certification

District Quality Control Certification prior to submittal to OEM

- Districts responsible for conducting their own Quality Control
- District completes Environmental Document Submittal Form (Form 650-050-15) in **SWEPT**
- Draft environmental document and technical studies are uploaded into the **Electronic Review Comment** system
- OEM Lead Review Team confirms submittal is complete and ready for review



NEPA Assignment: OEM NEPA Review Process for District Practitioners

58



District Quality Control Certification

District Quality Control Certification prior to submittal to OEM

ENVIRONMENTAL DOCUMENT SUBMITTAL FORM

Submittal Type: **Select**
 Document Type: **Select**
 ETCM Number: _____
 Project Title: _____
 Project Phase: **Select**
 LRP Project: **Select** LRP Agency: _____
 Anticipated Letting Type: **Select** if other, please specify: _____
 District Project Manager: _____ Phone: _____
 District Environmental Lead: _____ Phone: _____

Re-evaluation Type:
 Preliminary Engineering Right of Way Design Change Construction Advertisement
 Contents of Submittal - include a list of the documents and technical reports being submitted.

State of Documents: This expenditure is that only complete documents will be submitted for review; however, if an incomplete document is submitted, provide justification to support request for review.

List Cooperating Agencies

Document sent to Cooperating Agency: **Select**
 District Quality Control Completion Date: _____

We certify that this document is complete and ready for review or approval.

Signature: _____ Phone: _____
 Print Name: _____
 Signature: _____ Phone: _____
 Print Name: _____

Submittal Type: **Select**
 Select
 Initial
 Comment Resolution

Document Type: **Select**
 Select
 Type 2 CE
 EA
 EA for public availability
 EA with FONSI
 DEIS



NEPA Assignment: OEM NEPA Review Process for District Practitioners



DISTRICT 1 ERC Submittal Reviewers

District Quality Control Certification prior to submittal to OEM

Districts assign OEM Lead Reviewers in ERC

- Katasha Cornwell
- Thu-Huong Clark
- Martha Hodgson
- Marjorie Kirby
- Xavier Pagan
- Victor Muchuruza



NEPA Assignment: OEM NEPA Review Process for District Practitioners



DISTRICT 2 ERC Submittal Reviewers

District
Quality
Control
Certification
prior to
submittal to
OEM

Districts assign OEM Lead Reviewers in ERC

- Erika Thompson
- Shereen Yee Fong
- Jenna Bowman
- Marjorie Kirby
- Xavier Pagan
- Victor Muchuruza



NEPA Assignment: OEM NEPA Review Process for District Practitioners

61



DISTRICT 3 ERC Submittal Reviewers

District
Quality
Control
Certification
prior to
submittal to
OEM

Districts assign OEM Lead Reviewers in ERC

- Katasha Cornwell
- Thu-Huong Clark
- Jenna Bowman
- Marjorie Kirby
- Xavier Pagan
- Victor Muchuruza



NEPA Assignment: OEM NEPA Review Process for District Practitioners

62



DISTRICT 4 ERC Submittal Reviewers

District
Quality
Control
Certification
prior to
submittal to
OEM

Districts assign OEM Lead Reviewers in ERC

- Shereen Yee Fong
- Erika Thompson
- Michael Sykes
- Marjorie Kirby
- Xavier Pagan
- Victor Muchuruza



NEPA Assignment: OEM NEPA Review Process for District Practitioners

63



DISTRICT 5 ERC Submittal Reviewers

District
Quality
Control
Certification
prior to
submittal to
OEM

Districts assign OEM Lead Reviewers in ERC

- Thu-Huong Clark
- Katasha Cornwell
- Catherine Bradley
- Marjorie Kirby
- Xavier Pagan
- Victor Muchuruza



NEPA Assignment: OEM NEPA Review Process for District Practitioners

64



DISTRICT 6 ERC Submittal Reviewers

District
Quality
Control
Certification
prior to
submittal to
OEM

Districts assign OEM Lead Reviewers in ERC

- Shereen Yee Fong
- Erika Thompson
- Catherine Bradley
- Marjorie Kirby
- Xavier Pagan
- Victor Muchuruza



NEPA Assignment: OEM NEPA Review Process for District Practitioners

65



DISTRICT 7 ERC Submittal Reviewers

District
Quality
Control
Certification
prior to
submittal to
OEM

Districts assign OEM Lead Reviewers in ERC

- Erika Thompson
- Shereen Yee Fong
- Martha Hodgson
- Marjorie Kirby
- Xavier Pagan
- Victor Muchuruza



NEPA Assignment: OEM NEPA Review Process for District Practitioners

66





Florida's Turnpike ERC Submittal Reviewers

District Quality Control Certification prior to submittal to OEM

Districts assign OEM Lead Reviewers in ERC

- Use contact for geographic District
- Marjorie Kirby
- Xavier Pagan
- Victor Muchuruza



 **NEPA Assignment: OEM NEPA Review Process for District Practitioners**  **67**

Florida's Turnpike ERC Submittal Reviewers

District Quality Control Certification prior to submittal to OEM

Districts assign OEM Lead Reviewers in ERC

- Use contact for geographic District
- Marjorie Kirby
- Xavier Pagan
- Victor Muchuruza

 **NEPA Assignment: OEM NEPA Review Process for District Practitioners**  **68**

OEM and Legal Draft Document Review

OEM and Legal Document Review

- **Project Briefing (Optional) Scheduled by District Project Manager**
 - Summarize issues and coordination held
- **30 Day OEM and Legal Review**
- **Cooperating Agencies**
 - Districts upload documents into the Environmental Screening Tool for concurrent agency review



NEPA Assignment: OEM NEPA Review Process for District Practitioners

69



District Updates Draft Environmental Document

District Updates Draft Environmental Document

- **ERC response to comments should include references to where change was made**
- **OEM Comment Resolution Meeting (Optional)**
 - Requested by Districts as needed
 - Discuss comments not understood
- **Environmental Document Submittal Form**
 - "OEM Comment Resolution" once all comments addressed



NEPA Assignment: OEM NEPA Review Process for District Practitioners



70



District Updates Draft Environmental Document

District Updates Draft Environmental Document



- **Options to ensure changes were made (On a case by case basis)**
 - “Track Changes”
 - Errata Sheets
 - Highlighted text changes

 **NEPA Assignment: OEM NEPA Review Process for District Practitioners**  71


OEM and Legal Review and Approval for Public Availability

OEM and Legal Review and Approval


- **15 Day OEM and Legal Review to verify comments were addressed**
- **EAs and EISs**
 - Approval for public availability

 **NEPA Assignment: OEM NEPA Review Process for District Practitioners**  72


Public Hearing



- **EAs and EISs require a Public Hearing**
- **Some Type 2 CE's require Public Hearings**
 - Per Section 339.155 F.S.
- **Type 2 CE's do not require approval by OEM for Public Hearing unless requested by a District**




NEPA Assignment: OEM NEPA Review Process for District Practitioners




73


District Updates Final Document



- **Address comments from Public Hearing**
- **Prepare document for Location Design Concept Acceptance (LDCA)**



NEPA Assignment: OEM NEPA Review Process for District Practitioners




74


OEM and Legal Review of Final Document

**OEM and
Legal
Review of
Final
Document**

- **30 Day Review by OEM Lead Review Team and Legal prior to LDCA**



NEPA Assignment: OEM NEPA Review Process for District Practitioners




75

Final Document Approval


**District
Certifies
Final
Document**

- **District Certifies Final Document**
- **30 Day Legal Sufficiency Review (when required)**
 - Draft Final EISs and Individual Section 4(f) Evaluations
 - Assesses whether the Environmental Document adequately addresses the NEPA procedures, laws and policies concerning the project
 - Evaluates potential litigation risk
- **Final OEM Review**
 - Districts complete and submit Environmental Document Submittal Form: "Request for Approval"
 - Districts upload final documents into SWEPT for approval
 - Recommend LDCA to OEM Director

**Legal
Sufficiency
Review
Completed
for EISs and
Individual
Section 4(f)**



NEPA Assignment: OEM NEPA Review Process for District Practitioners



76

Final Document Approval

OEM Approves Final Document; Location and Design Concept Acceptance

- **Director of OEM or designee signs Environmental Document**
 - Type 2 CE = Location Design Concept Acceptance
 - EA/FONSI
 - DEIS & FEIS/ROD
- **Advertise LDCA in local newspaper**
- **Additional Steps for EAs and EISs**
- **Determine if Limitation of Claims should be published**

Additional Steps for FONSI/ROD (Publication and Limitation of Claims)

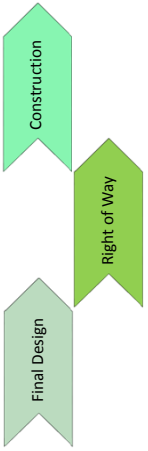



NEPA Assignment: OEM NEPA Review Process for District Practitioners




What is a Re-evaluation

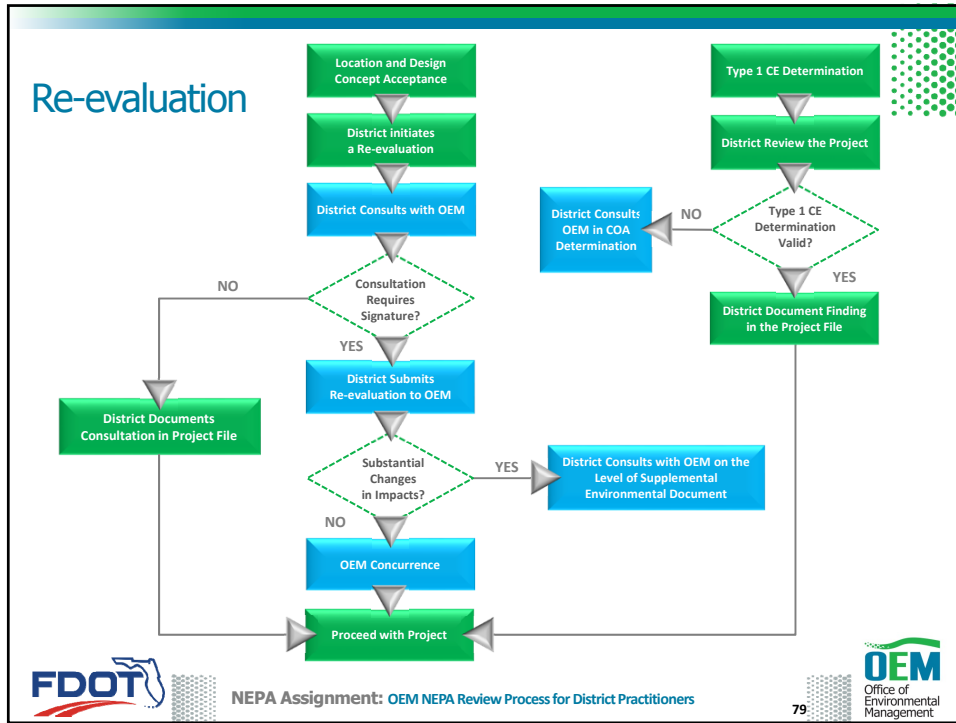
- Documents whether changes have occurred since the approval of the original Environmental Document
- Required:
 - Prior to requesting federal-aid authorization for subsequent project phases (final design, right of way and construction)
 - Major design/project changes (e.g. Design-Build project)
 - Project changes due to changes in law or regulation
 - Project changes from the federal process to the state process
 - Acceptable FEIS was not submitted 3 years after DEIS





NEPA Assignment: OEM NEPA Review Process for District Practitioners





OEM's Role in Alternative Project Delivery

Review Request for Proposals

- Confirm commitments are included in the Request for Proposal (RFP)
- Decision-making authority remains with FDOT
- Re-evaluation for design changes required during D/B and prior to construction

Scheduling

- OEM needs to be involved and considered for the review process
- Districts should advise OEM of upcoming re-evaluations due to design changes

FDOT NEPA Assignment: OEM NEPA Review Process for District Practitioners 80 OEM Office of Environmental Management

The Importance of Project (NEPA) Commitments

Commitments are a critical component of a transportation project as they provide assurance to agencies and other stakeholders that identified issues will be appropriately addressed in a future phase of project delivery.



NEPA Assignment: OEM NEPA Review Process for District Practitioners



81

STATE OF FLORIDA DEPARTMENT OF TRANSPORTATION

700-02-15
Construction
7-14

Project Commitments Record

Project Name: _____ FM#: _____ Project Limits: _____ Original FAP#: _____

Project Development & Environment

Project Manager: _____ Environmental Document Approval Date: _____

Environmental Document Type: (Type 1 or 2 CE, EA, EIS, SEIR, or NMSA)

Project Segment Number	Commitment	External Stakeholder	Env. Commitment? (yes/no)	Implementation Phase	Status	Transmittal Date	Completion Date	Comments

Design

Project Manager: _____ FM #: _____

Project Segment Number	Commitment	External Stakeholder	Env. Commitment? (yes/no)	Confirmed no impact to Env. commitment (yes/no)	Commitment Approval Date	Implementation Phase	Status	Transmittal Date	Completion Date	Comments

Right of Way

Project Manager: _____ FM #: _____

Project Segment Number	Commitment	External Stakeholder	Env. Commitment? (yes/no)	Confirmed no impact to Env. commitment (yes/no)	Commitment Approval Date	Implementation Phase	Status	Transmittal Date	Completion Date	Comments

Project Commitments

- Commitments are written and documented correctly
- Commitments do not repeat laws, specifications, standards
- Commitments are doable
- Coordination steps in the PCR were/can be met
- Responsible party for commitments
- Recognize difference between permit conditions and commitments
- For Re-evaluations, Districts provide status of NEPA Commitments to OEM
- Commitments procedure PD&E Manual: Part 2, Chapter 32

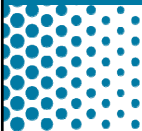


NEPA Assignment: OEM NEPA Review Process for District Practitioners

83

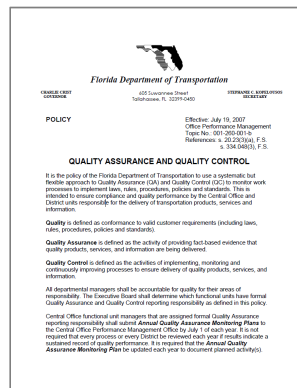


Quality Assurance and Quality Control



FDOT Quality Assurance / Quality Control Policy

- QA/QC Policy, Topic Number 001-260-001
- Ensures compliance and quality performance by the Central Office and District staff responsible for the delivery of transportation products, services, and information



Quality Assurance / Quality Control (QA/QC)

CONSULTANTS

- Develop individual QC Plans for each project
- Adhere to QC Plan
- QC prior to document submittal
- Submit Consultant QC certification form with submittal
- Maintain QC markups and QC certification

Guidance:

- QA/QC Policy Topic No.: 001-260-001
- FDOT Project Management Handbook, Part 1, Chapter 16



Quality Assurance / Quality Control (QA/QC)

DISTRICTS

- Ensure consultant QC Plan is being adhered
- Use Electronic Review Comment (ERC) system
- Utilize technical reviewers and District resources
- Request OEM support when needed
- Maintain records of QC certifications, and, when requested, QC markups
- Upload Final Documents using SWEPT

Guidance:

- QA/QC Policy Topic No.: 001-260-001
- FDOT Project Management Handbook, Part 1, Chapter 16



NEPA Assignment: OEM NEPA Review Process for District Practitioners

87



Quality Assurance / Quality Control (QA/QC)

OEM

- Review and Monitor Processes and Performance
 - Project Decisions
 - Completion of Environmental Analysis
 - Project File Documentation
 - Checking for errors and omissions
 - Legal Sufficiency Reviews

Guidance:

- QA/QC Policy Topic No.: 001-260-001
- FDOT Project Management Handbook, Part 1, Chapter 16



NEPA Assignment: OEM NEPA Review Process for District Practitioners

88



Summary

OEM NEPA Review Process

Type 1 CEs

ETDM Preparation

OEM & District Issue Discussion


SME Assignment?

Type 2 CE, EAs and EISs


Legal Sufficiency

FONSI/ROD

Project Commitments



NEPA Assignment: OEM NEPA Review Process for District Practitioners



89

Survey

Any questions....Who you gonna call?

- a. FHWA
- b. OEM
- c. Ghostbusters



Any questions....Who you gonna call?

- a. FHWA
- b. OEM**
- c. Ghostbusters



The existing Programmatic Agreements for Section 106 and Interchange Access Requests will be suspended on the effective date of NEPA Assignment.

- a. True
- b. False



The existing Programmatic Agreements for Section 106 and Interchange Access Requests will be suspended on the effective date of NEPA Assignment.

- a. True
- b. False**



Under NEPA Assignment, FDOT will **not** need any approvals from FHWA for Interstate Interchange Access Requests

- a. True
- b. False



Under NEPA Assignment, FDOT will **not** need any approvals from FHWA for Interstate Interchange Access Requests

- a. True
- b. **False**



Under NEPA Assignment, OEM will approve Type 1 Categorical Exclusions

- a. True
- b. False



NEPA Assignment: OEM NEPA Review Process for District Practitioners

97



Under NEPA Assignment, OEM will approve Type 1 Categorical Exclusions

- a. True
- b. False**



NEPA Assignment: OEM NEPA Review Process for District Practitioners

98



Prior to submitting a document for OEM review, what is required from the District?

- a. Electronic Review Comment (ERC) Submittal Report as proof of internal review
- b. Environmental Document Submittal Form
- c. A copy of the District's Quality Control set
- d. Efficient Transportation Decision Making (ETDM) summary report



NEPA Assignment: OEM NEPA Review Process for District Practitioners

99



Prior to submitting a document for OEM review, what is required from the District?

- a. Electronic Review Comment (ERC) Submittal Report as proof of internal review
- b. Environmental Document Submittal Form**
- c. A copy of the District's Quality Control set
- d. Efficient Transportation Decision Making (ETDM) summary report



NEPA Assignment: OEM NEPA Review Process for District Practitioners

100



Who signs the final environmental document for Location Design Concept Acceptance (LDCA)?

- a. Consultant
- b. District Environmental Administrator
- c. District Project Development Engineer
- d. OEM Director or designee



Who signs the final environmental document for Location Design Concept Acceptance (LDCA)?

- a. Consultant
- b. District Environmental Administrator
- c. District Project Development Engineer
- d. **OEM Director or designee**



If a project does not have major design changes, it can advance to the next phase from design to construction without a re-evaluation.

- a. True
- b. False



If a project does not have major design changes, it can advance to the next phase from design to construction without a re-evaluation.

- a. True
- b. False**



Which statement is true?

- a. Commitments are not needed anymore due to NEPA Assignment
- b. Commitments will continue to provide assurance to agencies and other stakeholders that identified issues will be addressed in future phases of the project
- c. Commitments will be developed by OEM



Which statement is true?

- a. Commitments are not needed anymore due to NEPA Assignment
- b. Commitments will continue to provide assurance to agencies and other stakeholders that identified issues will be addressed in future phases of the project**
- c. Commitments will be developed by OEM



