



Florida Department of Transportation

JEB BUSH
GOVERNOR

STATE MATERIALS OFFICE
5007 Northeast 39th Avenue, Gainesville, Florida 32609
Telephone: (352) 955-6600, Fax: (352) 955-6613

DENVER J. STUTLER, JR.
SECRETARY

October 13, 2005

This Memo Has Expired

MATERIALS BULLETIN NO. 11-05

DCE MEMORANDUM NO. 26-05

(FHWA Approved: 10/12/05)

TO: DISTRICT MATERIALS ENGINEERS
DISTRICT CONSTRUCTION ENGINEERS

FROM: Thomas O. Malerk, P.E., Director, Office of Materials
Brian Blanchard, P.E., Director, Office of Construction

COPIES: Greg Schiess, Jack Banning, Bob Burleson, Jim Warren,
Jim Musselman, John Shoucair

SUBJECT: Use of Approved Aggregate Products without
Producer Certification at Hot-Mix Asphalt Plants

Occasionally, in order to mitigate delays to Department projects, or otherwise advance the delivery of the project, a Contractor may request permission to use a quantity of uncertified aggregate, from an approved aggregate Source provided that:

- The use of such aggregate will not adversely affect the finished product,
- The aggregate is approved under the Source's Quality Control Program (QCP),
- The Contractor assumes all risks associated with incorporating the aggregate,
- There is no additional cost to the Department, and
- Remedial action at the point-of-use will allow for finished product compliance.

Approval shall be facilitated by the producer's favorable history of compliance with its Quality Control Program. The procedures herein shall be used in cases deemed exceptions rather than as a rule. The Department may consider approval under the following three situations subject to mitigation:

1. Coarse Aggregate Minus 200 content exceeds 1.75%, but is less than 3.75%, and is not attributable to clay contamination.
2. Material contains out-of-grade or over-sized product.

MATERIALS BULLETIN NO. 11-05

DCE MEMORANDUM NO. 26-05

(continued)

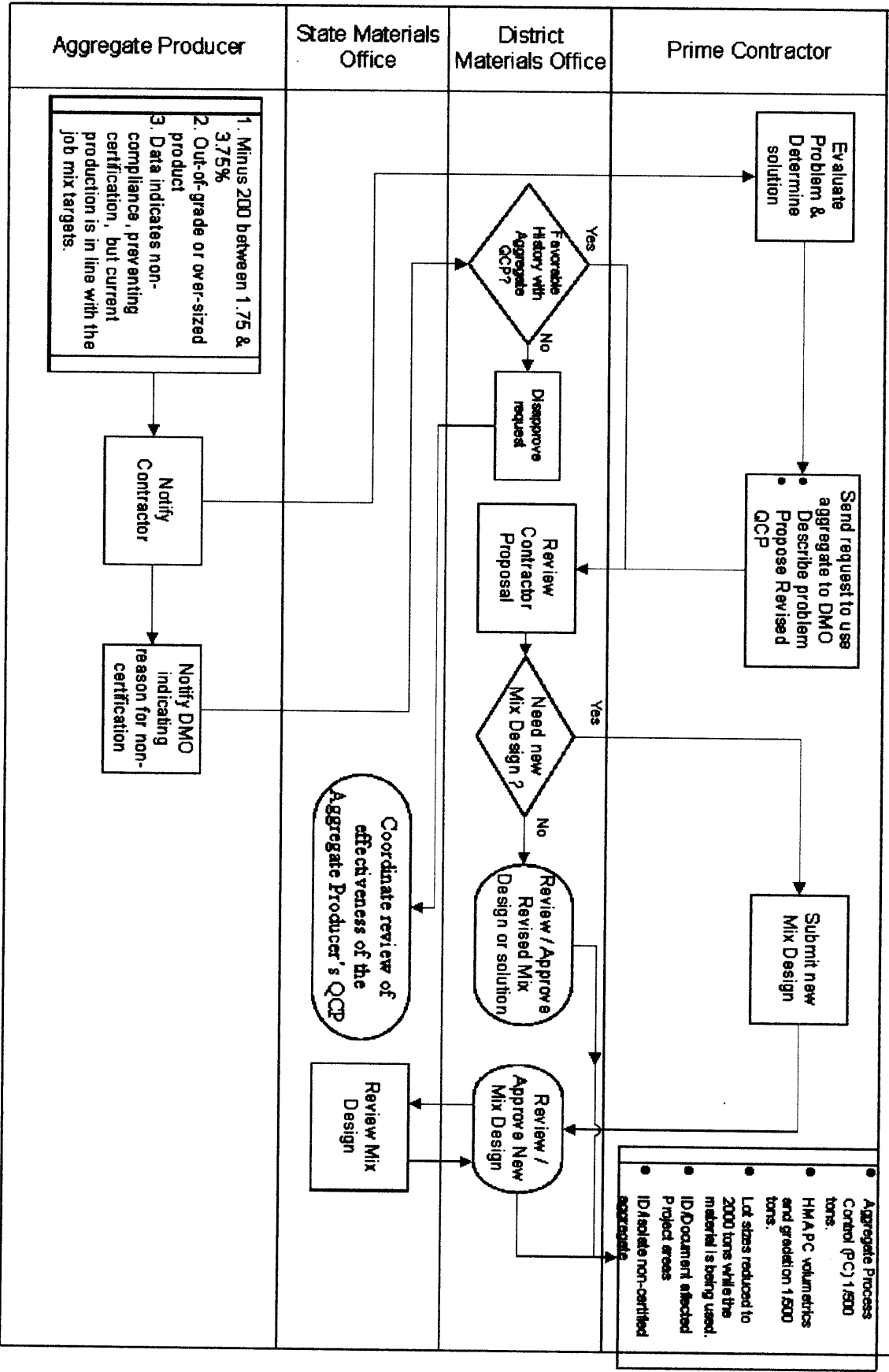
3. Data evaluation per Rule 14-103 indicates non-compliance, preventing certification as the primary method of acceptance, but current inventory production is in line with the job mix targets.

The District Materials Engineer may approve the request given the following:

1. The Prime Contractor shall:
 - a. Describe the problem (situation 1, 2, or 3 above).
 - b. Submit to the DMO for incorporation into the QCP, a plan for remedying the problem and assuring compliance of the final product. At a minimum the revised QC Plan should include the following:
 - i. To the extent practical*, Process Control (PC) frequencies are increased to 1/500 tons for incoming aggregate. (** There is no need to perform gradation tests on incoming aggregate with over-sized material if the Asphalt Contractor plans to use a power-screen and check gradation subsequently.*)
 - ii. Proposal for blend change if within allowable design mix, submitted to the District & State Bituminous personnel.
 - iii. PC volumetrics and gradation of the HMA increased to 1/500 tons.
 - iv. Lot sizes are reduced to 2000 tons while the material is being used.
 - v. Areas of the project incorporating the affected material clearly identified and documented.
 - vi. Identification and isolation of all non-complying aggregate from other approved material.
2. The Aggregate Producer shall:
 - a. Provide a letter to the District Materials Office (DMO) indicating the reason for non-certification.
 - b. Clearly denote on the shipping ticket "Not Certified for FDOT".
(Repeat Aggregate Producer QCP failures in a 12-month period preempt approval of the Contractor's request.)
3. The State Materials Office shall:
 - a. Review / approve submitted mix design revision as appropriate.
 - b. Coordinate review of effectiveness of the Aggregate Producer's QCP and assess the need for revisions thereto.
4. The District Materials Office shall:
 - a. Review/approve the Contractor's proposed blend changes as appropriate.
 - b. Determine if an existing mix design will accommodate proposed blend changes, or if such changes require a new mix design submittal.
 - c. Review/approve mix design as appropriate.

Should you have any questions concerning this matter, please contact either John Shoucair (352) 955-2925 or Jim Musselman (352) 955-2905 at the State Materials Office.

Use of Approved Aggregate Products without Producer Certification at Hot-Mix Asphalt Plants



Aggregate Producer

State Materials Office

District Materials Office

Prime Contractor

1. Minus 200 between 1.75 & 3.75%
2. Out-of-grade or over-sized product
3. Data indicates non-compliance, preventing certification, but current production is in line with the job mix targets.

Notify Contractor

Notify DMO indicating reason for non-certification

Coordinate review of effectiveness of the Aggregate Producer's QCP

Review Mix Design

- Aggregate Process Control (P/C) 1,500 tons.
- HIM/PC volumetrics and gradation 1,500 tons.
- Lot sizes reduced to 2,000 tons while the material is being used.
- ID/Document attached project areas
- ID/Isolate non-certified aggregate.