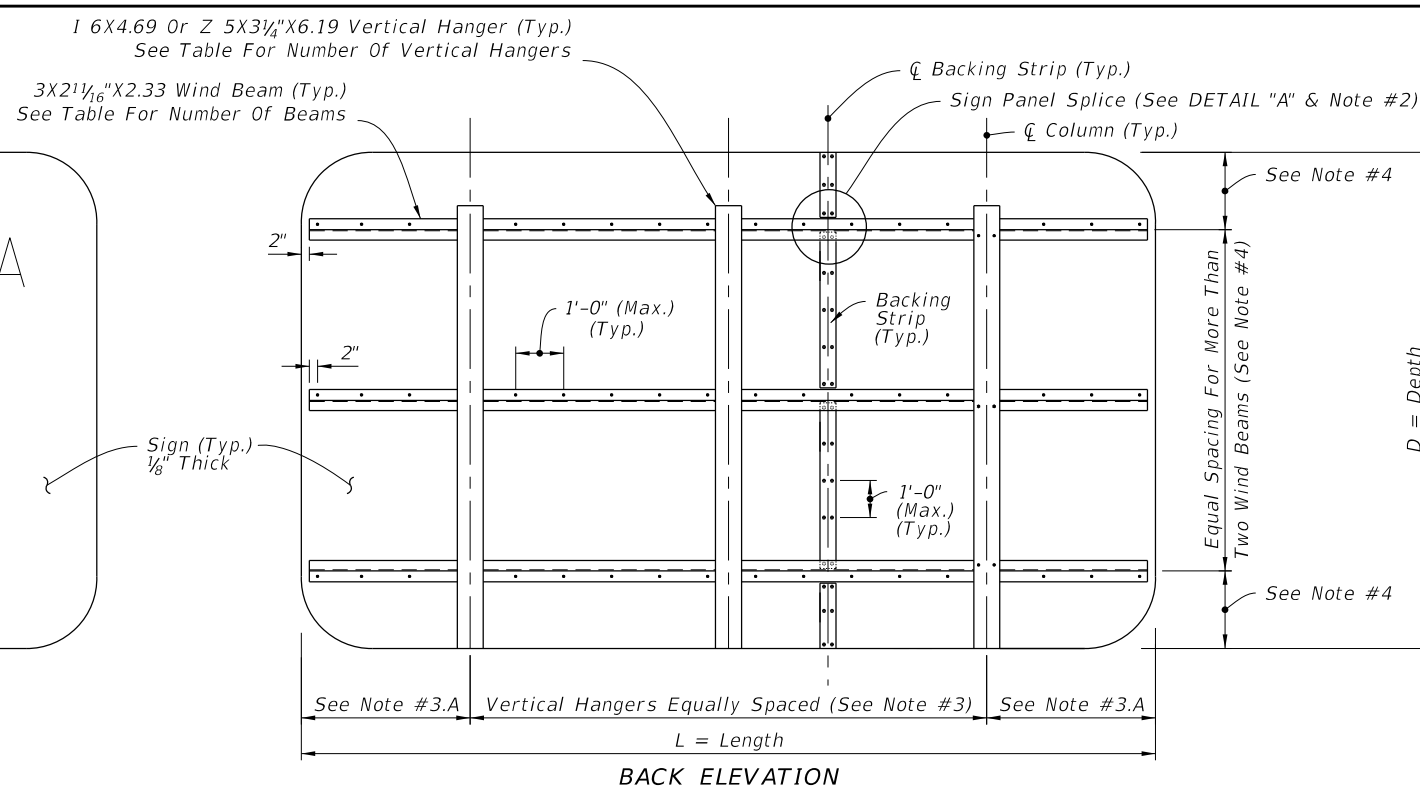
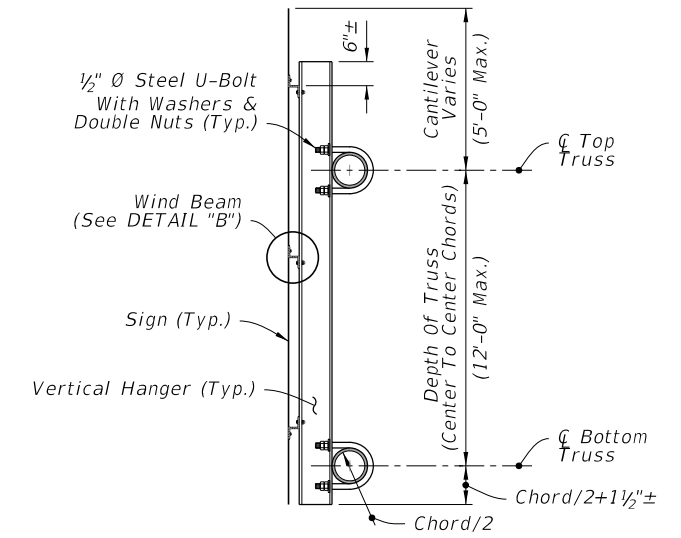


FRONT ELEVATION



BACK ELEVATION



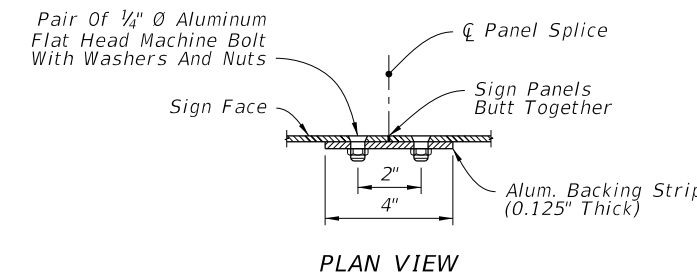
SIDE ELEVATION

TYPICAL SIGN FOR OVERHEAD TRUSS

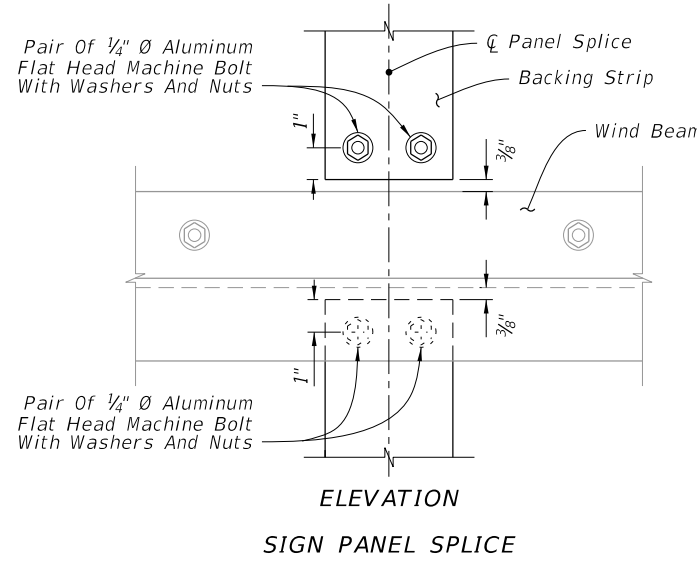
WIND BEAMS AND VERTICAL HANGERS							
Number Of Z 3x2 1/2 x2.33 Horiz. Wind Beams For Sign Depth And Wind			Number Of 16x4.69 or Z 5x3 1/4 x6.19 Vertical Hanger Beams For Sign Length				
Wind M.P.H.	No. Beams	Max. Depth	2 Hangers Max Length	3 Hangers Max Length	4 Hangers Max Length	5 Hangers Max Length	6 Hangers Max Length
170	2	5'	20'	30'	40'	45'	X
170	3	9'	20'	30'	40'	45'	X
170	4	12'	15'	22'	30'	38'	45'
170	5	15'	15'	22'	30'	38'	45'
170	6	18'	15'	22'	30'	38'	45'
150	2	5'	25'	38'	45'	X	X
150	3	9'	25'	38'	45'	X	X
150	4	12'	20'	25'	38'	45'	X
150	5	15'	20'	25'	38'	45'	X
150	6	18'	20'	25'	38'	45'	X
130	2	5'	35'	45'	X	X	X
130	3	9'	35'	45'	X	X	X
130	4	12'	25'	35'	45'	X	X
130	5	15'	25'	35'	45'	X	X
130	6	18'	25'	35'	45'	X	X

GENERAL NOTES

- Work this Index with Index 11310 and 11320.
- The number and location of the Panel Splices are determined by the Sign Face supplier.
- Spacing of Vertical Hangers:
 - A. Two Vertical Hanger = 21.0% L
 - Three Vertical Hanger = 14.5% L
 - Four Vertical Hanger = 10.7% L
 - Five Vertical Hanger = 8.5% L
 - Six Vertical Hanger = 7.0% L
- Spacing of vertical hanges may be varied slightly as necessary to clear the truss struts and diagonals at panel points
- Spacing of Wind Beams:
 - Two Wind Beams = 21.0% D
 - Three Wind Beams = 14.5% D
 - Four Wind Beams = 10.7% D
 - Five Wind Beams = 8.5% D
 - Six Wind Beams = 7.0% D
- Shop Drawings:
 - A. Required for Sign Panels deeper than 10'-0" with a horizontal panel splice.
 - B. Splice must be located in between interior Zee Supports and only allowed on signs greater than 10'-0".
- Materials:
 - A. Aluminum:
 - a. Bars, and Extruded Shapes: ASTM B 221, Alloy 6061-T6 or Alloy 6351-T5
 - b. Structural Shapes: ASTM B308, Alloy 6061-T6
 - c. Flat Head and Hex Head Machine Bolts: ASTM F468, Alloy 2024-T4
 - d. Hex Nuts: ASTM F467, Alloy 6061-T6 or Alloy 6262-T9
 - e. Lock Washers: ASTM B221, Alclad 2024-T4
 - B. Steel:
 - a. U-Bolts: ASTM A449 or ASTM A193 B7
 - b. Nuts: ASTM F563, 2 per leg
 - c. Washers: ASTM F436, (Flat Washers)
- Coatings:
 - A. Aluminum Bolts, Nuts and Washers: Anodic (0.0002 inches min) and chromate sealed.
 - B. Galvanized Steel Bolts, Nuts and Washers: ASTM F2329



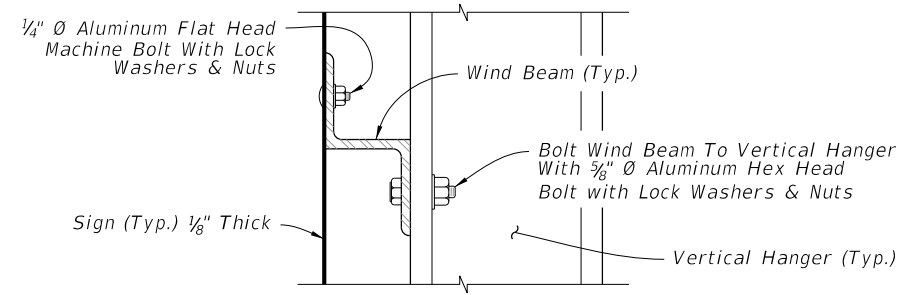
PLAN VIEW



ELEVATION

SIGN PANEL SPLICE

DETAIL "A"



DETAIL "B"

4/10/2017 6:51:52 AM

LAST REVISION	DESCRIPTION:
02/01/17	DETAIL "A" - changed the 3/8" Aluminum Flat Head Machine Screws to 1/4" Aluminum Flat Head Machine Bolts; DETAIL "B" - changed Button Head Bolts to Flat Head Machine Bolts and Lock Nuts to Lock Washers.

FY 2017-18
DESIGN STANDARDS

STEEL OVERHEAD SIGN STRUCTURES

INDEX NO.	SHEET NO.
11300	1 of 1