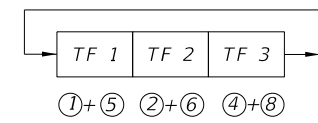
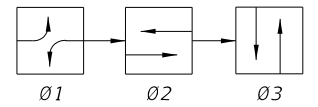
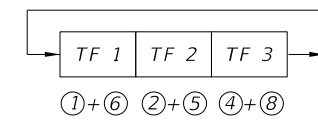
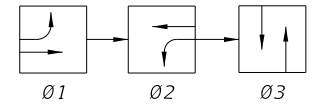


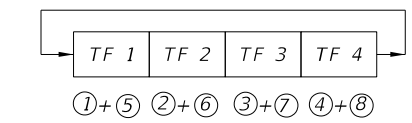
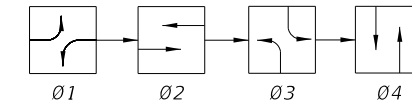
SOP 1



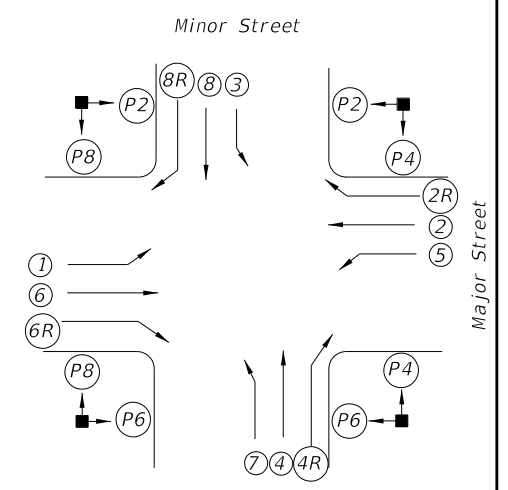
SOP 2



SOP 3



SOP 4

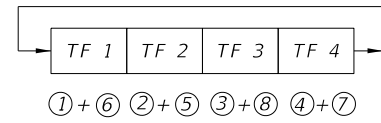
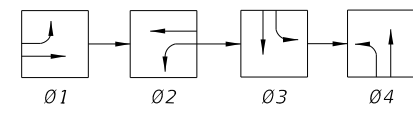


SIGNALIZED INTERSECTION

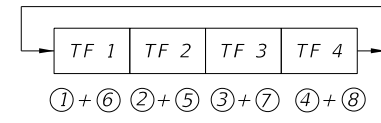
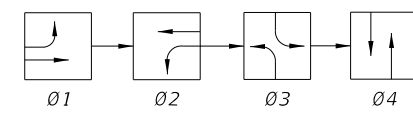
Vehicle movements & signal head number assignments are not directionally oriented but shall maintain their relative orientation about the intersection (I.E., movements 7 and 4 are always to the right of movements 1 and 6 etc.).

LEGEND

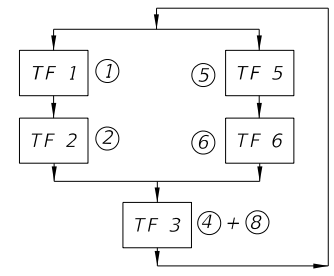
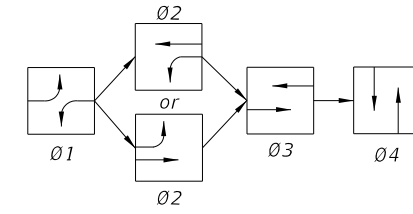
- (X) Vehicle Movement Number
- (PX) Pedestrian Movement Number
- TF X Timing Function Number
- ØX Phase Number
- ↔ Green Arrow (Left or Right)
- ↔R Red Arrow
- ↔ Yellow Arrow



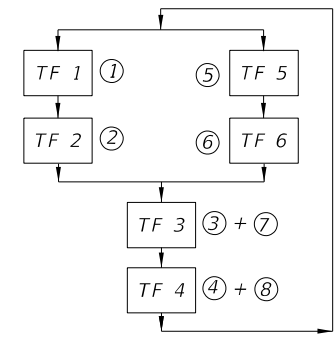
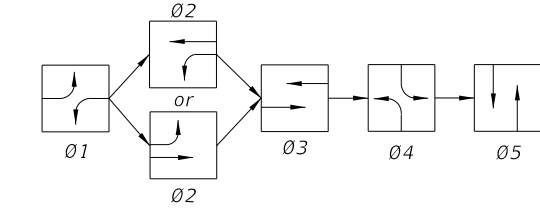
SOP 5



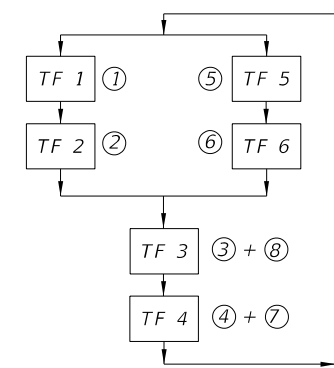
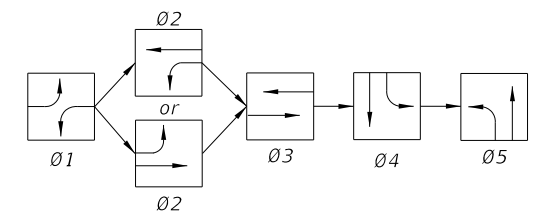
SOP 6



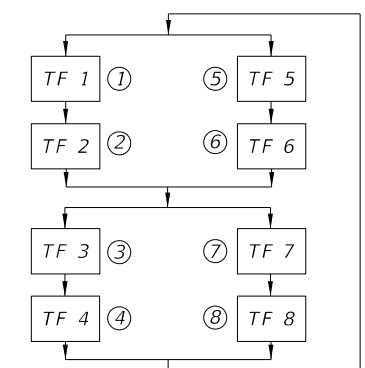
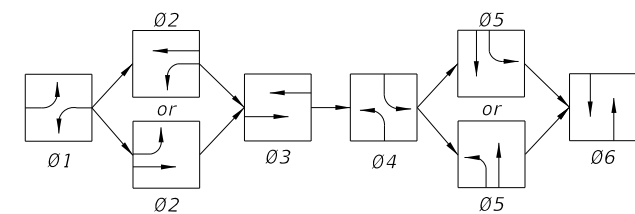
SOP 7



SOP 8



SOP 9



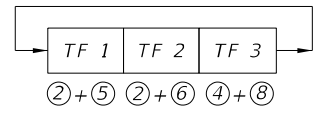
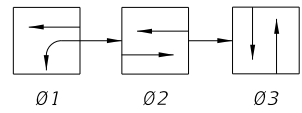
SOP 10

SIGNAL CLEARANCE TABLE
(Blank Indicates No Clearance Required)

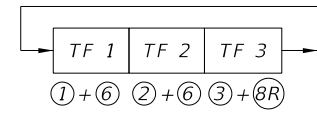
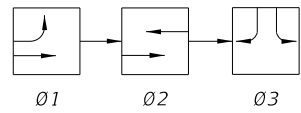
From To		SIGNAL INDICATIONS						
		R	↔	G	↔	↔	WALK	DONT WALK
SIGNAL INDICATIONS	R			Y	↔	Y		
	↔			Y	↔	Y		
	G				↔			
	↔							
	↔							
	WALK							
	DONT WALK						Flash DONT WALK	

10/14/2016 1:26:46 PM

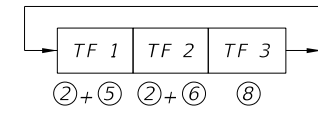
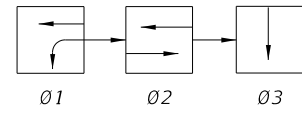
LAST REVISION 07/01/05	REVISION	DESCRIPTION:
---------------------------	----------	--------------



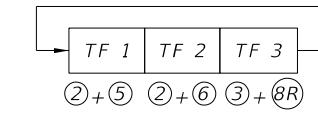
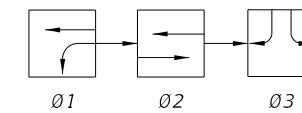
SOP 11



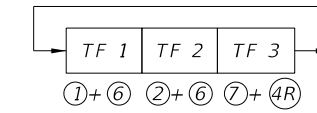
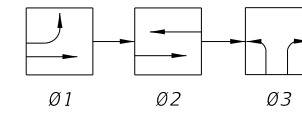
SOP 12



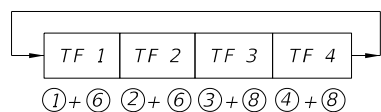
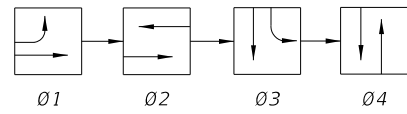
SOP 13
(ONE- WAY STREET INTERSECTION)



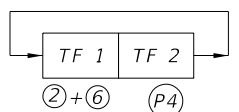
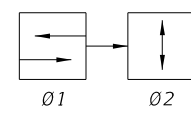
SOP 14
(DIAMOND INTERCHANGE OPERATION)



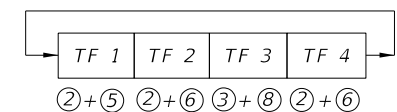
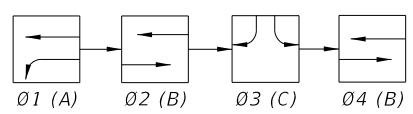
SOP 15
(DIAMOND INTERCHANGE OPERATION)



SOP 16

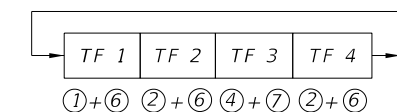
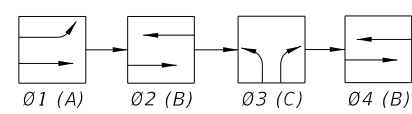


SOP 17
(MIDBLOCK)



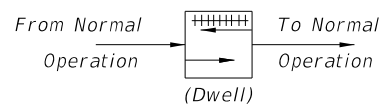
NOTE:
Only Ø2 Or Ø4 Used, Not Both To Obtain
ABC, Or ACB Operation.

SOP 18
(DIAMOND INTERCHANGE OPERATIONS)

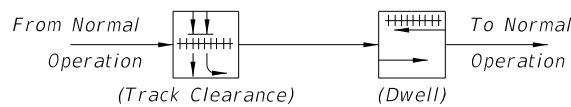


NOTE:
Only Ø2 Or Ø4 Used, Not Both To Obtain
ABC, Or ACB Operation.

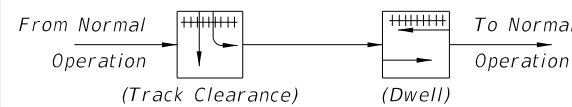
SOP 19
(DIAMOND INTERCHANGE OPERATIONS)



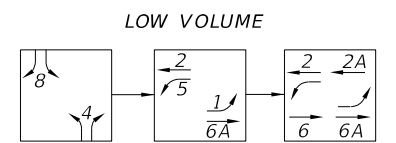
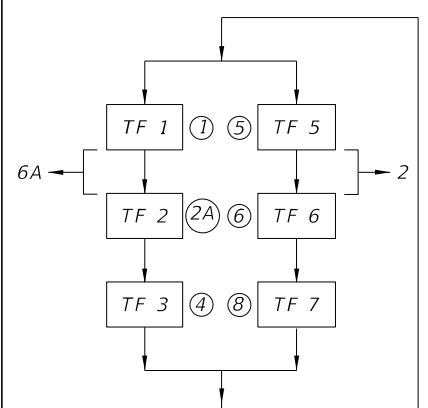
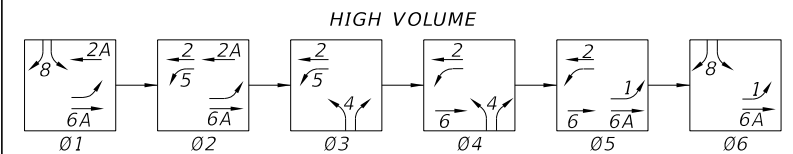
POP 1



POP 2



POP 3



SOP 20
(DIAMOND INTERCHANGE OPERATIONS)

10/14/2016 1:26:49 PM

LAST REVISION 07/01/00	REVISION	DESCRIPTION:
---------------------------	----------	--------------