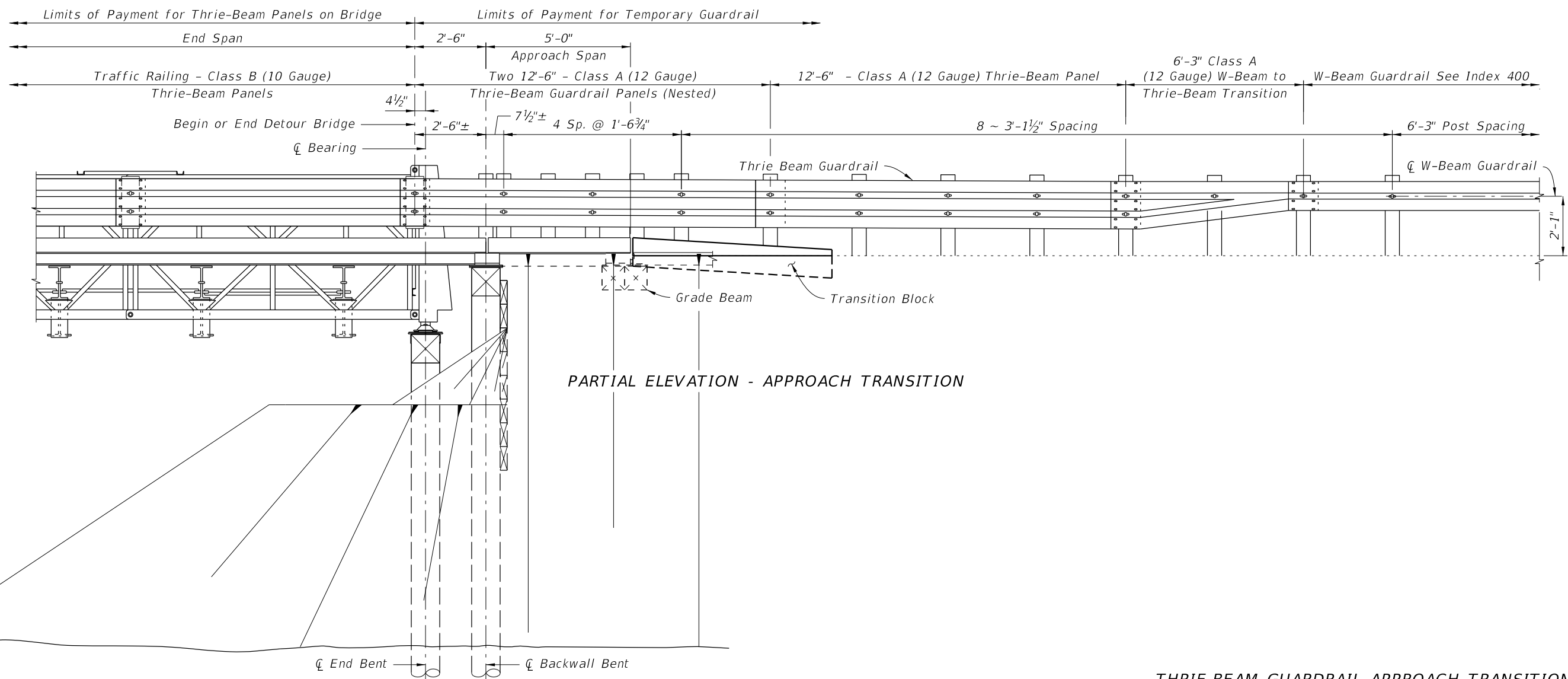



PARTIAL PLAN - APPROACH TRANSITION

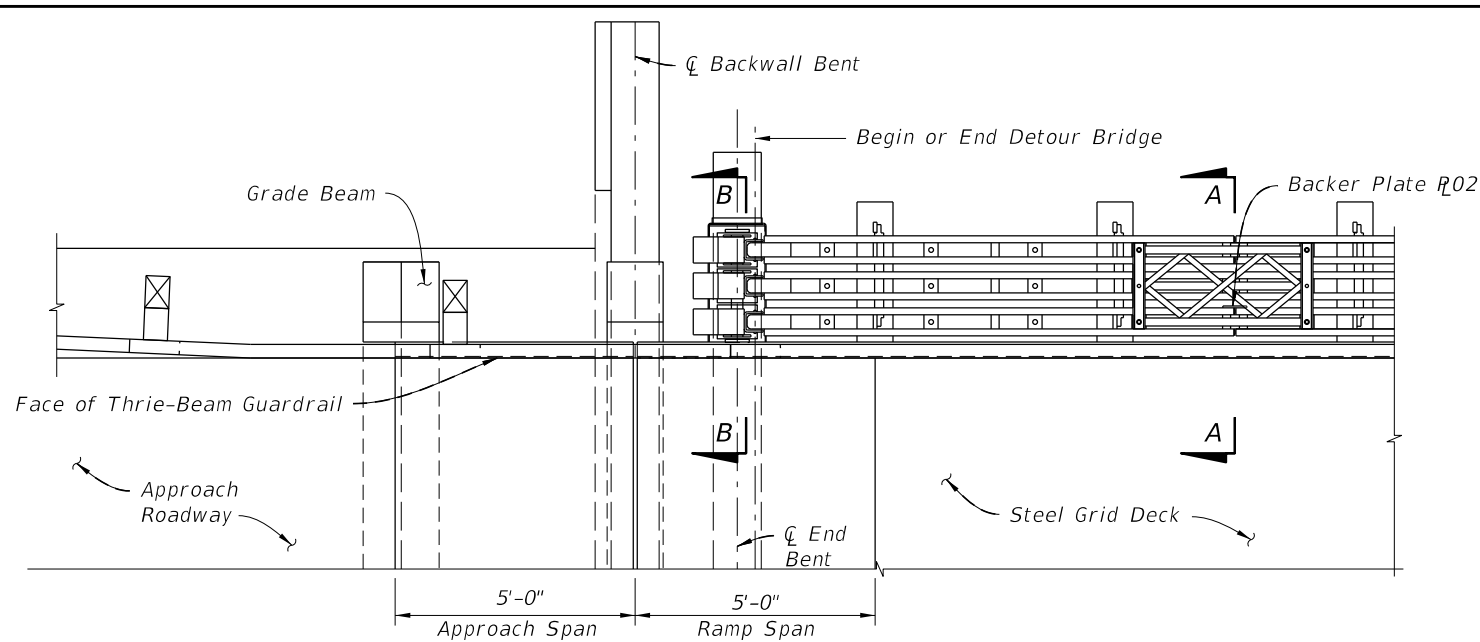


PARTIAL ELEVATION - APPROACH TRANSITION

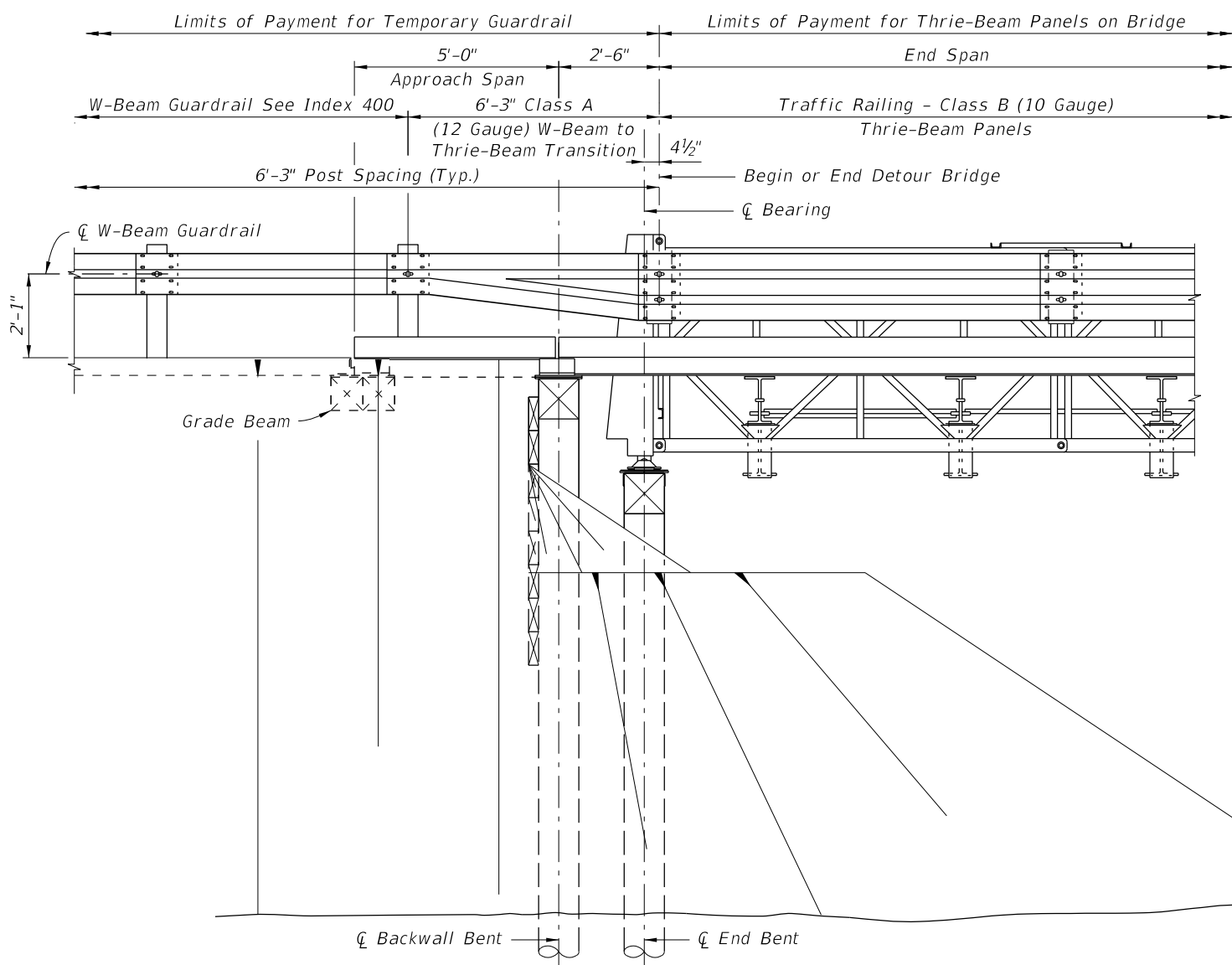
THRIE-BEAM GUARDRAIL APPROACH TRANSITION

12/17/2015 2:12:55 PM

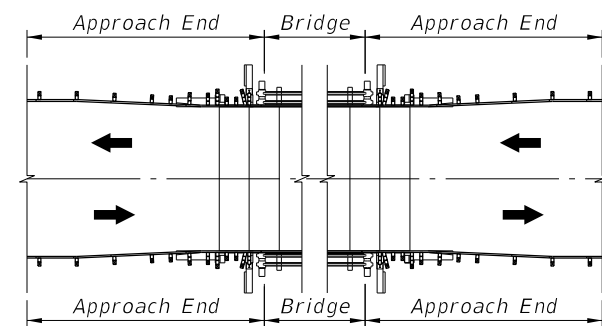
LAST REVISION 07/01/15	DESCRIPTION: 	 FY 2016-17 DESIGN STANDARDS	TEMPORARY DETOUR BRIDGE THRIE-BEAM GUARDRAIL	INDEX NO. 21640	SHEET NO. 1 of 6
---------------------------	----------------------	--	---	--------------------	---------------------



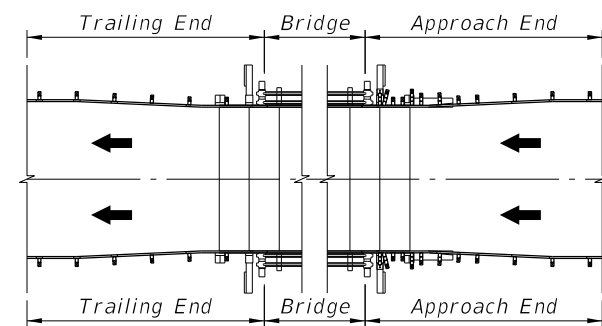
PARTIAL PLAN - TRAILING END



PARTIAL ELEVATION - TRAILING END



TWO-WAY TRAFFIC



ONE-WAY TRAFFIC

END TRANSITION APPLICATION DETAILS

12/17/2015 2:12:55 PM

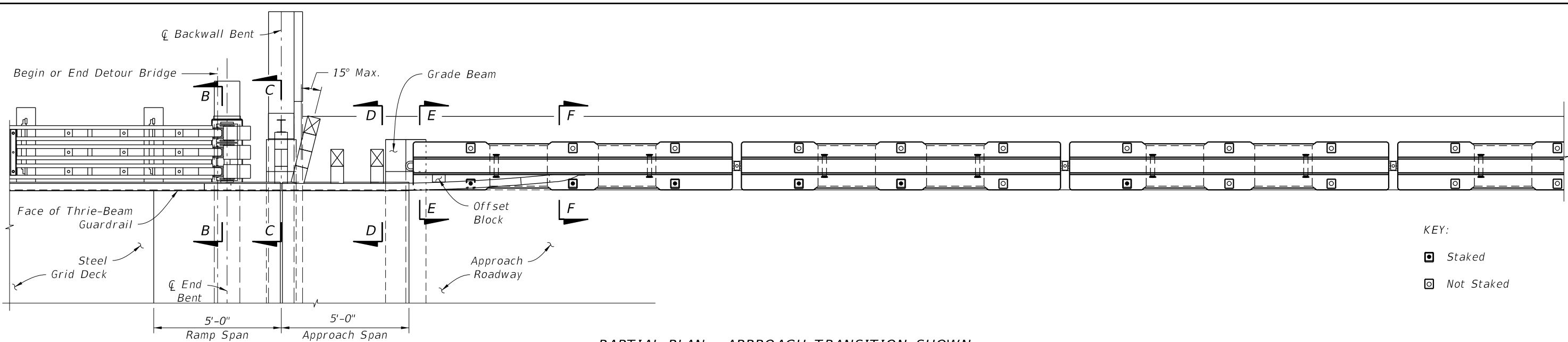
LAST REVISION	DESCRIPTION:
07/01/15	

FY 2016-17
DESIGN STANDARDS

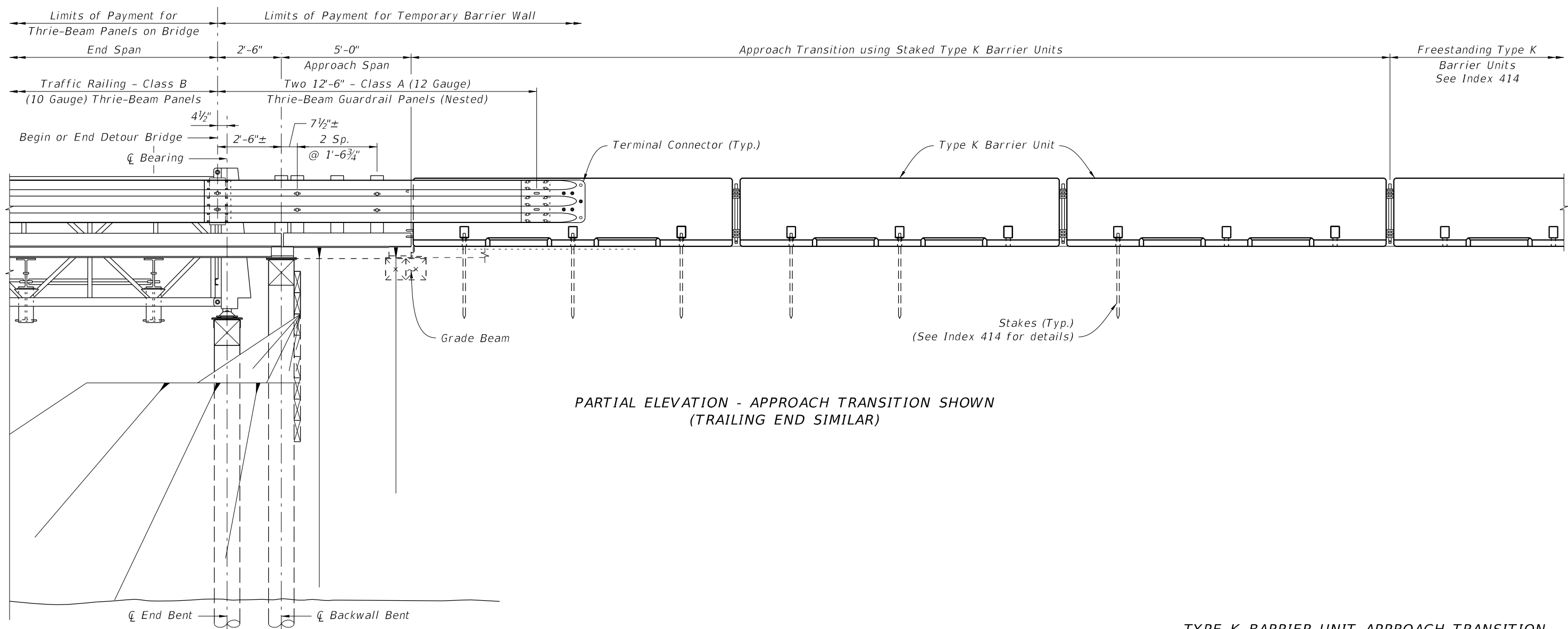
TEMPORARY DETOUR BRIDGE
THRIE-BEAM GUARDRAIL

INDEX NO.	SHEET NO.
21640	2 of 6

THRIE-BEAM GUARDRAIL TRAILING END TRANSITION



PARTIAL PLAN - APPROACH TRANSITION SHOWN
(TRAILING END SIMILAR)



PARTIAL ELEVATION - APPROACH TRANSITION SHOWN
(TRAILING END SIMILAR)

12/17/2015 2:12:56 PM

TYPE K BARRIER UNIT APPROACH TRANSITION

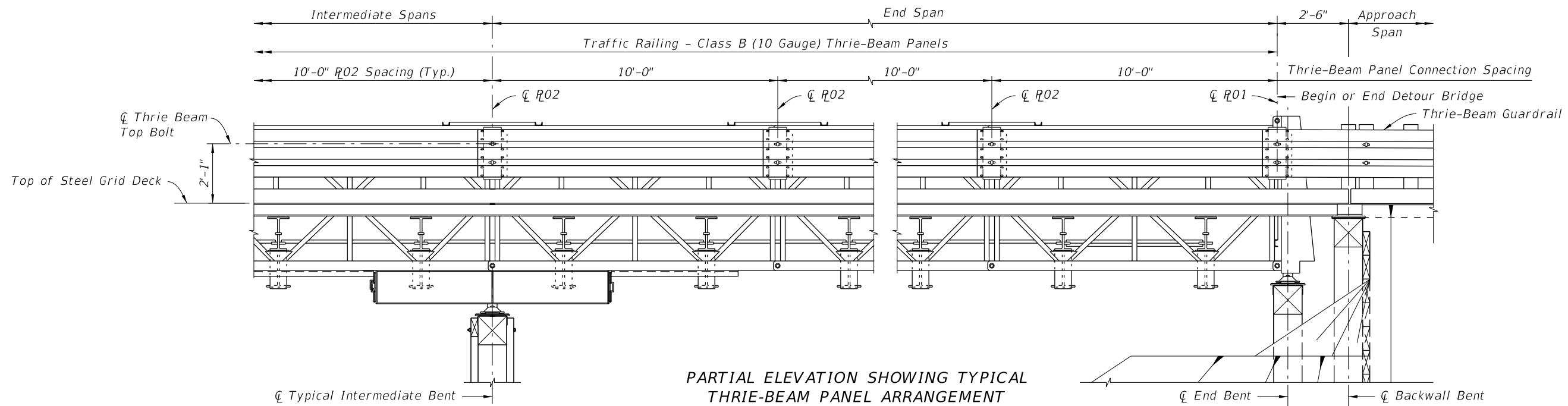
LAST REVISION 07/01/15	REVISION	DESCRIPTION:
---------------------------	----------	--------------

FDOT
FY 2016-17
DESIGN STANDARDS

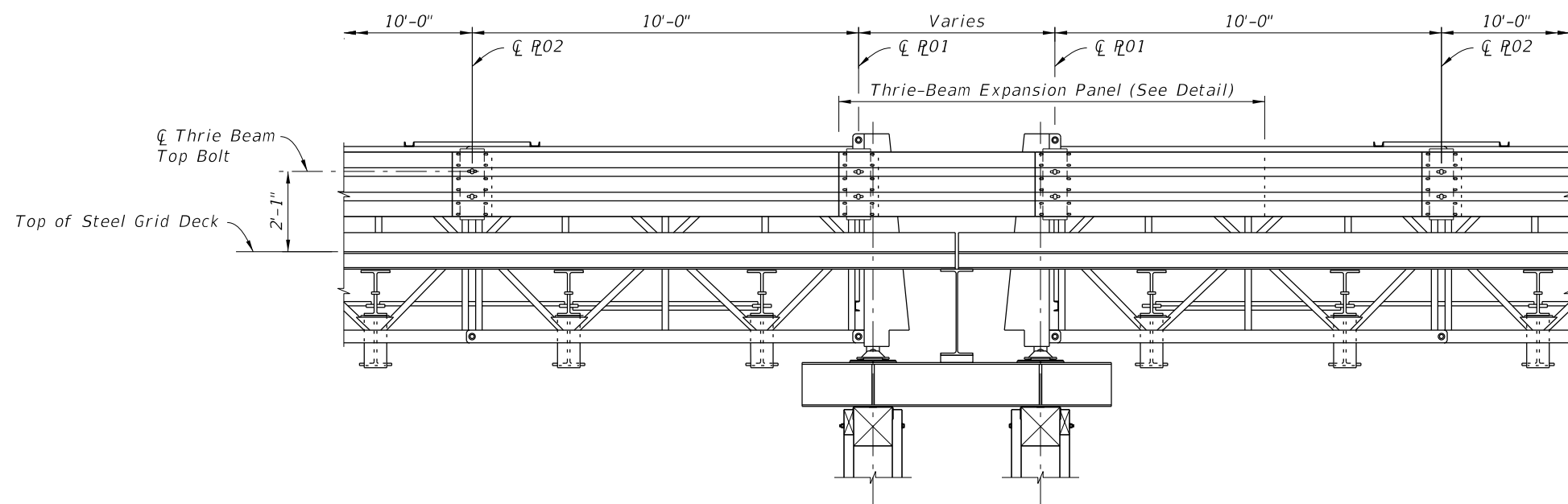
TEMPORARY DETOUR BRIDGE
THRIE-BEAM GUARDRAIL

INDEX NO.
21640

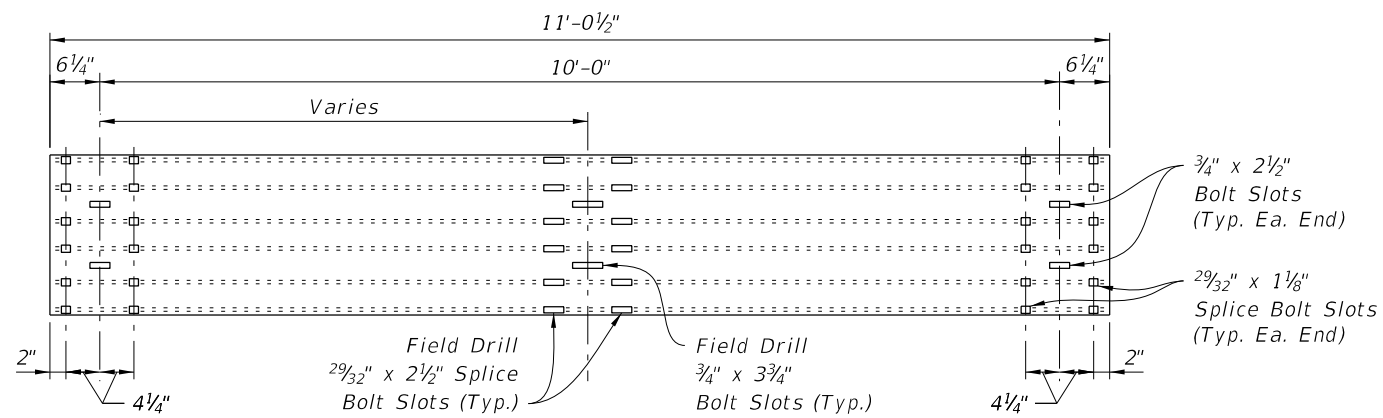
SHEET NO.
3 of 6



PARTIAL ELEVATION SHOWING TYPICAL THRIE-BEAM PANEL ARRANGEMENT



PARTIAL ELEVATION SHOWING THRIE-BEAM PANELS AT EXPANSION JOINT



THRIE-BEAM EXPANSION PANEL DETAIL

12/17/2015 2:12:59 PM

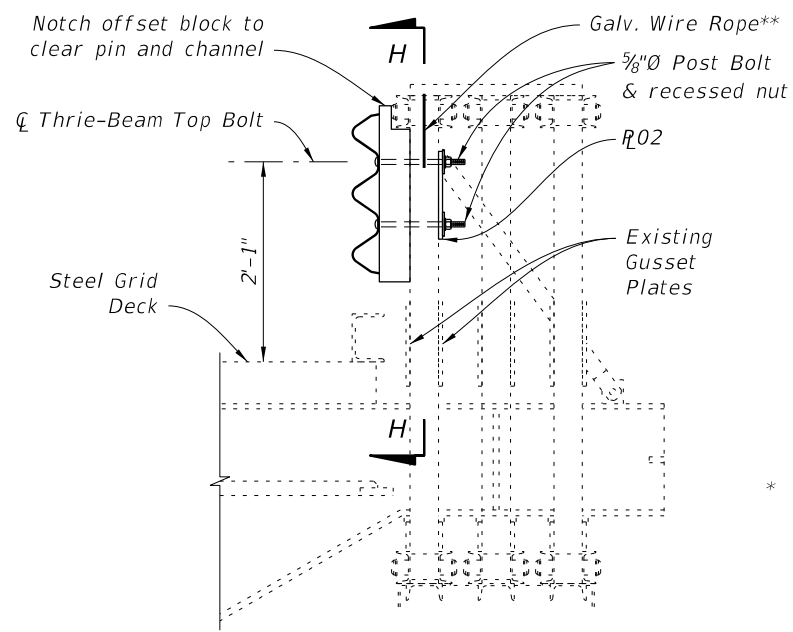
LAST REVISION	DESCRIPTION:
07/01/15	

FDOT FY 2016-17 DESIGN STANDARDS

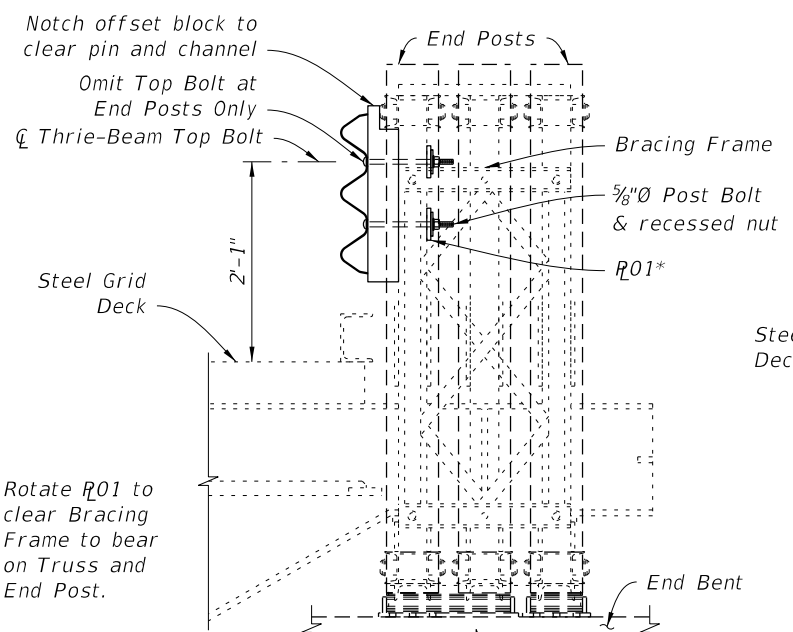
TEMPORARY DETOUR BRIDGE
THRIE-BEAM GUARDRAIL

INDEX NO.
21640

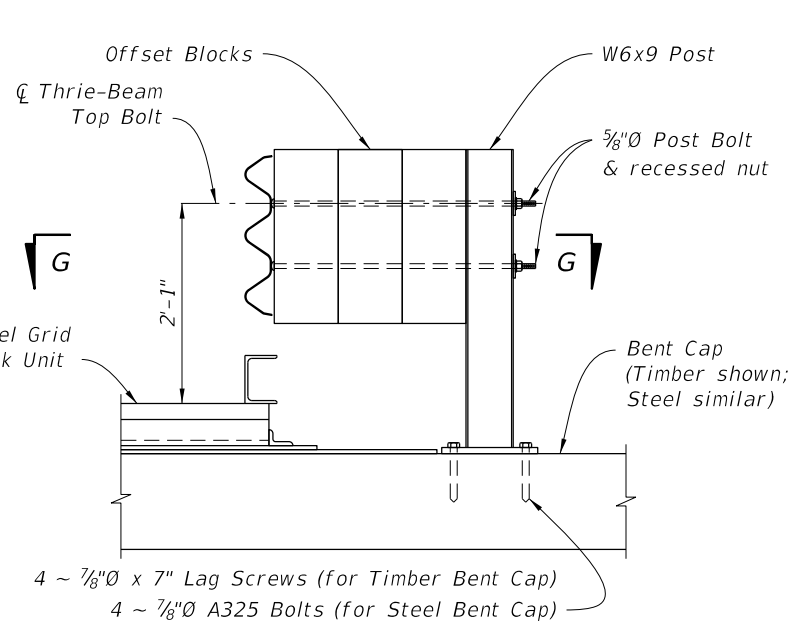
SHEET NO.
4 of 6



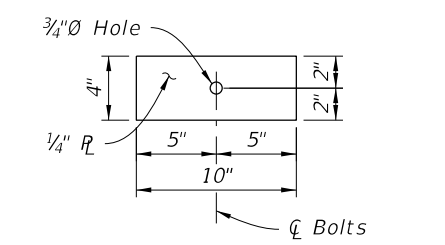
SECTION A-A



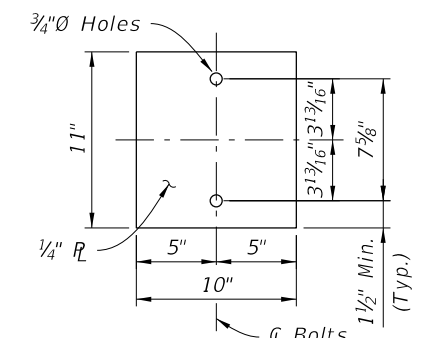
SECTION B-B



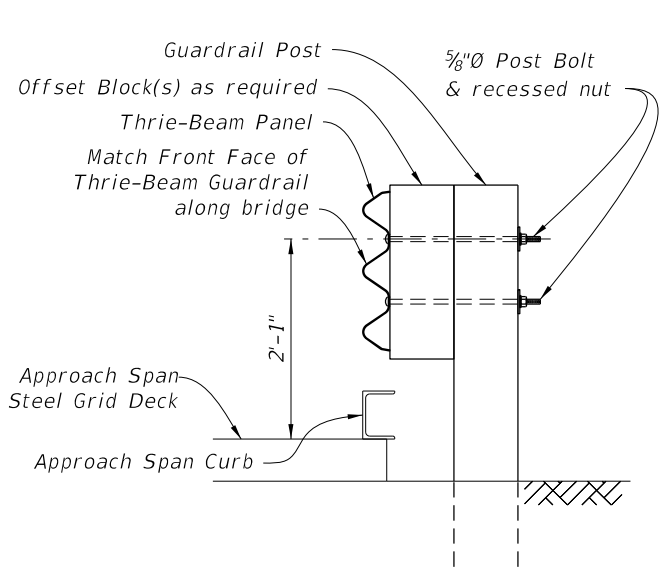
SECTION C-C



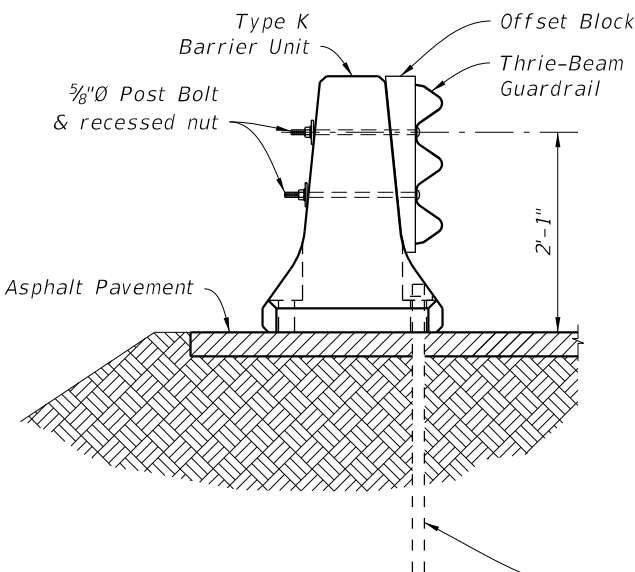
BACKER PLATE R01 DETAIL



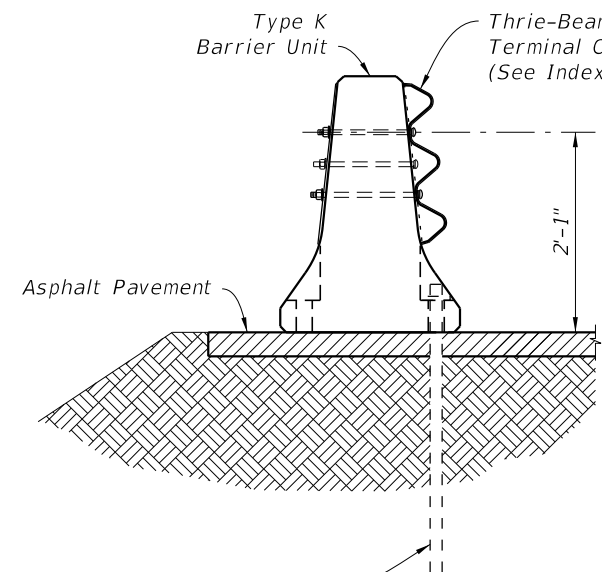
BACKER PLATE R02 DETAIL



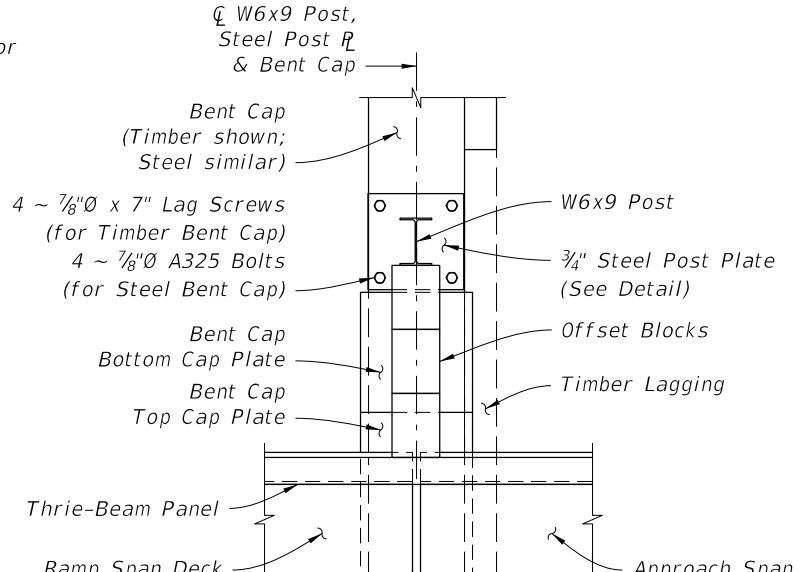
SECTION D-D



SECTION E-E

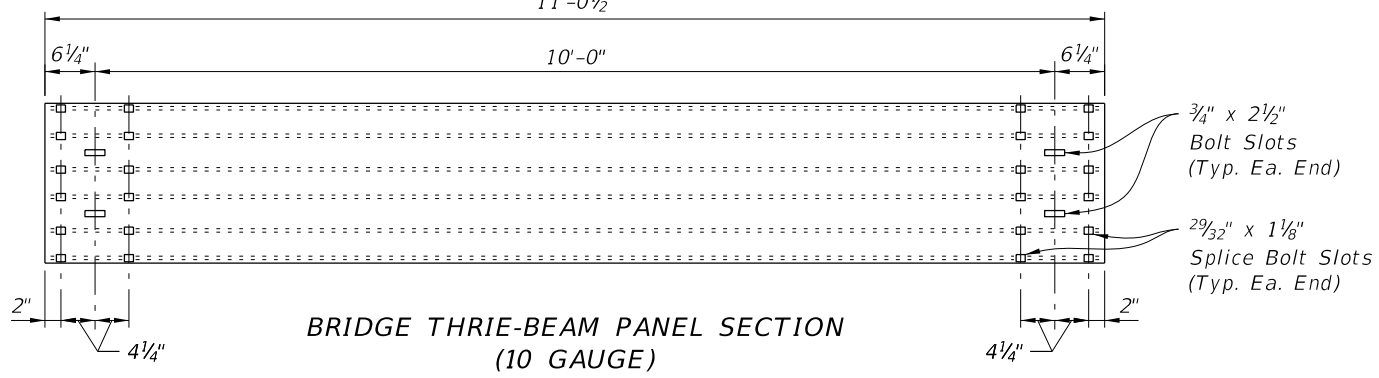


SECTION F-F

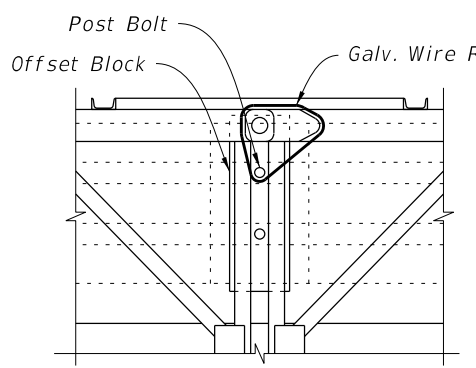


VIEW G-G

(Adjacent Post and Offset Blocks not shown for clarity)

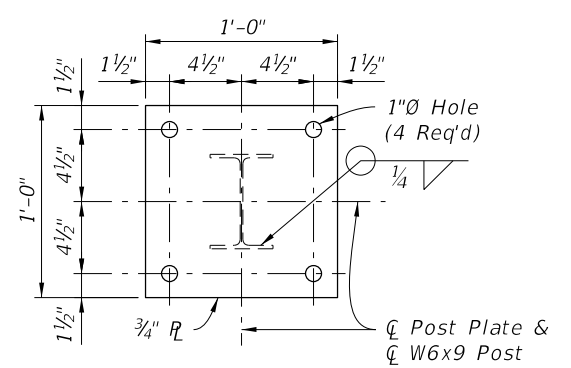


BRIDGE THRIE-BEAM PANEL SECTION (10 GAUGE)



SECTION H-H

** As directed by the Engineer in order to limit vibration induced vertical displacement of the Thrie-Beam Panels, provide Contractor supplied, one time use, commercially available 3/16 inch (Min.) Galvanized Wire Rope w/ Ferrules (or other approved wire type) positioned and tensioned as required to secure the Panels.

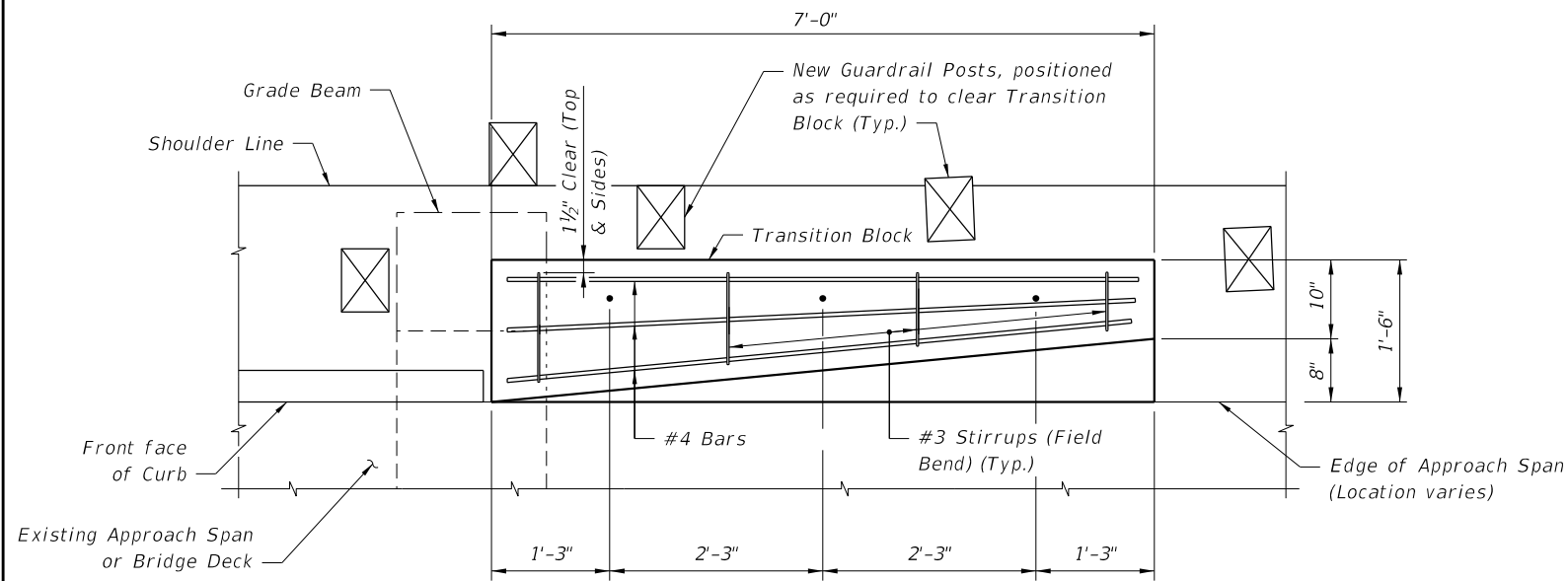


STEEL POST PLATE DETAIL

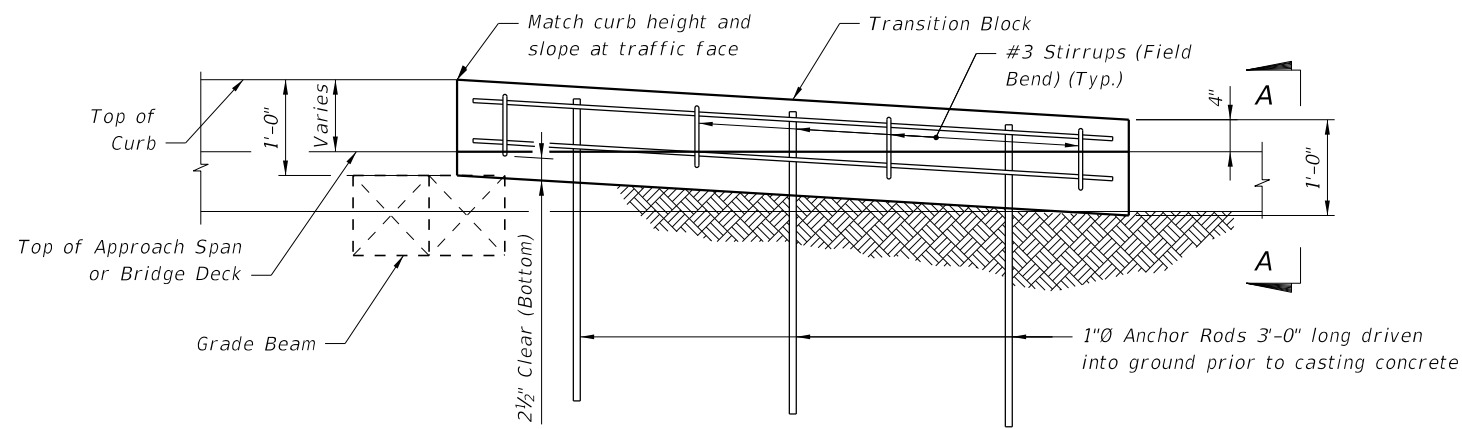
SECTIONS AND DETAILS

12/17/2015 2:13:00 PM

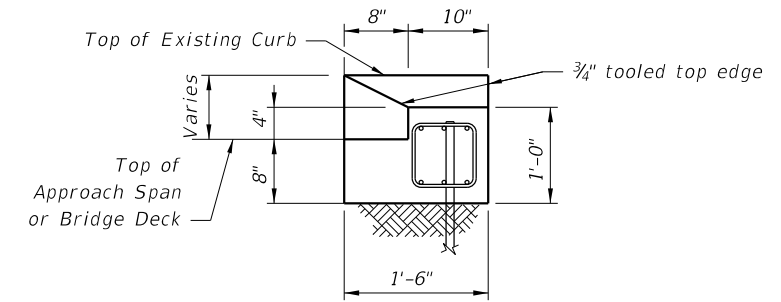
LAST REVISION	DESCRIPTION:
07/01/15	



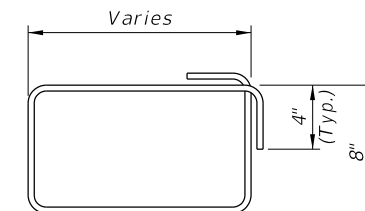
PLAN VIEW OF TRANSITION BLOCK
(GUARDRAIL NOT SHOWN FOR CLARITY)



ELEVATION OF TRANSITION BLOCK
(GUARDRAIL AND POSTS NOT SHOWN FOR CLARITY)



END VIEW A-A



#3 STIRRUP (FIELD BEND)

NOTES:

REINFORCING STEEL: Reinforcing steel shall be ASTM A615, Grade 60.

ANCHOR RODS: Steel Anchor Rods shall be ASTM A36, ASTM A709 Grade 36 or ASTM A615 Grade 60 hot-dip galvanized in accordance with Specification Section 962.

ESTIMATED QUANTITIES		
ITEM	UNIT	QUANTITY
Concrete Class NS	CY	0.4
Reinforcing Steel	LB	61
Guardrail (Reset)	LF	12.5

12/17/2015 2:13:03 PM

LAST REVISION 07/01/13	DESCRIPTION:
---------------------------	--------------