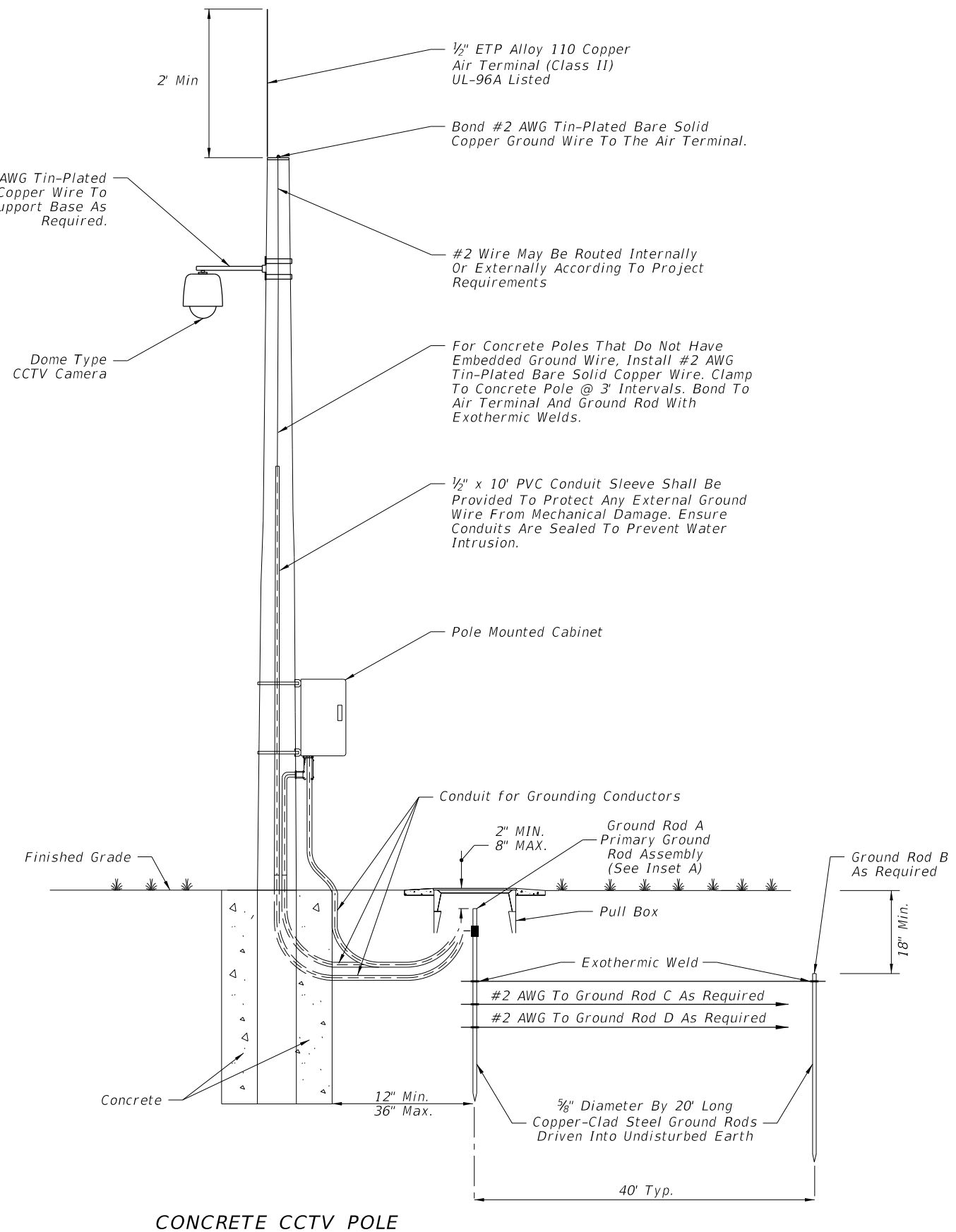


STEEL CCTV POLE



CONCRETE CCTV POLE

11/30/2015 11:30:56 AM

LAST REVISION 07/01/14

REVISION

DESCRIPTION:

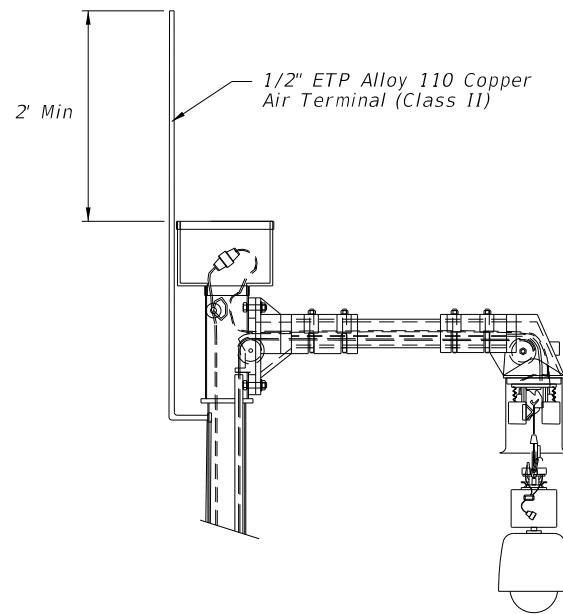


FY 2016-17 DESIGN STANDARDS

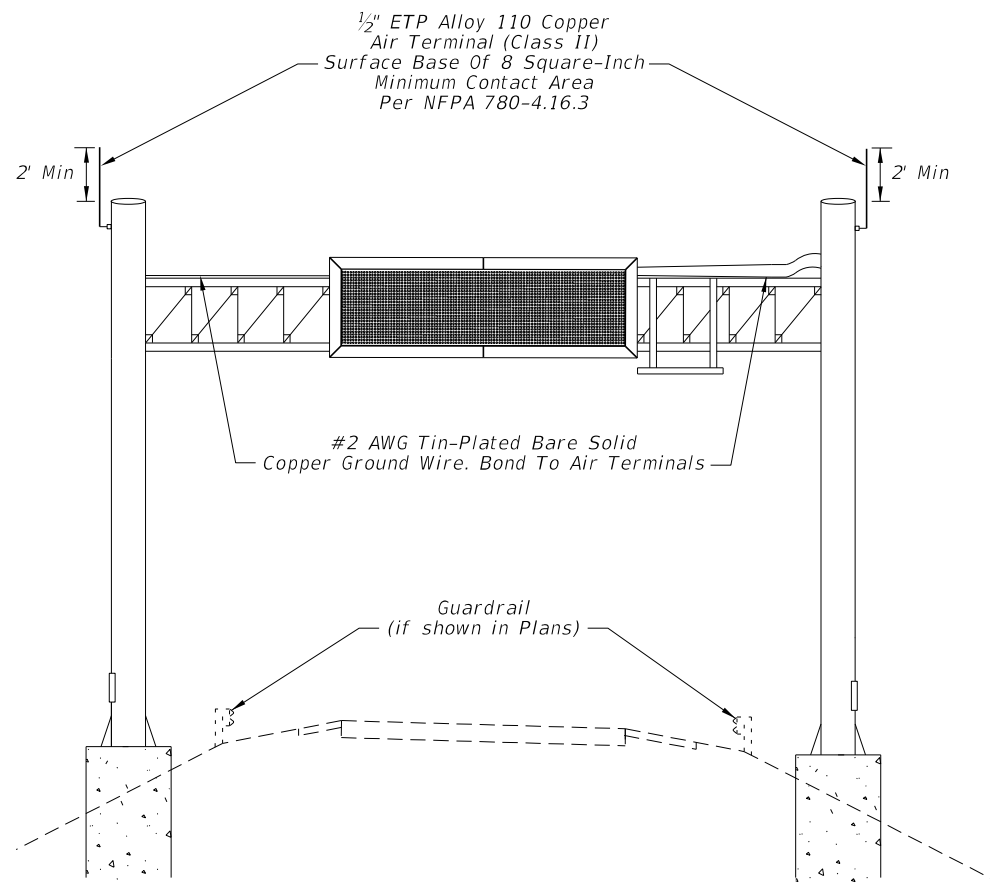
GROUNDING AND LIGHTNING PROTECTION

INDEX NO. 18102

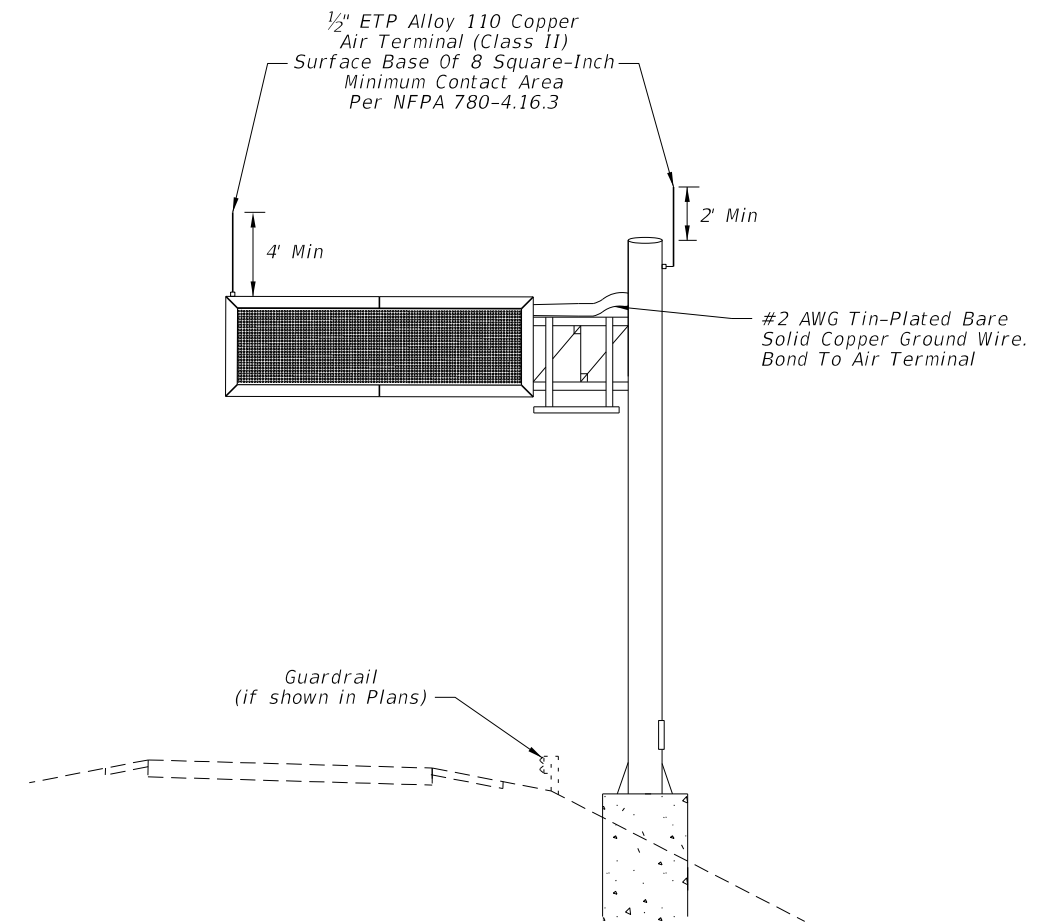
SHEET NO. 1 of 4



AIR TERMINAL PLACEMENT
(Lowering Device Pole)




AIR TERMINAL PLACEMENT
(Span DMS)

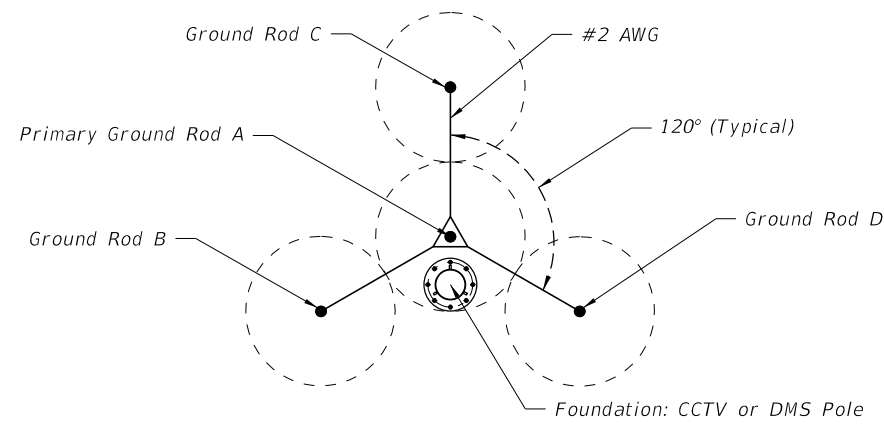


AIR TERMINAL PLACEMENT
(Cantilever DMS)

11/30/2015 11:30:57 AM

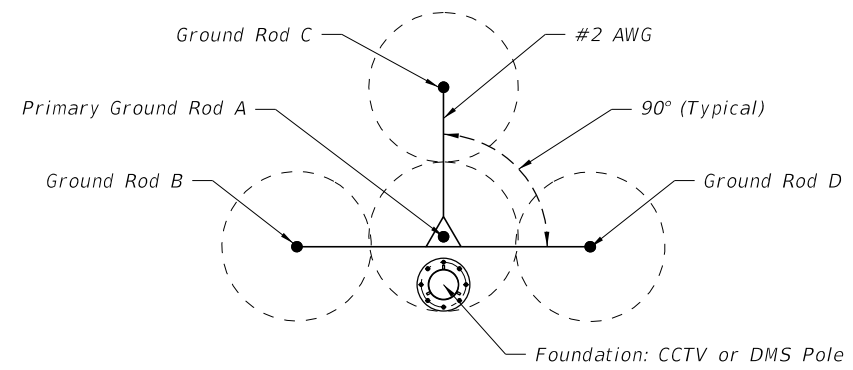
LAST REVISION 07/01/15	REVISION DESCRIPTION:	 FY 2016-17 DESIGN STANDARDS	GROUNDING AND LIGHTNING PROTECTION	INDEX NO. 18102	SHEET NO. 2 of 4
---------------------------	-----------------------	--	------------------------------------	--------------------	---------------------

"Sphere Of Influence: 120 Degree"

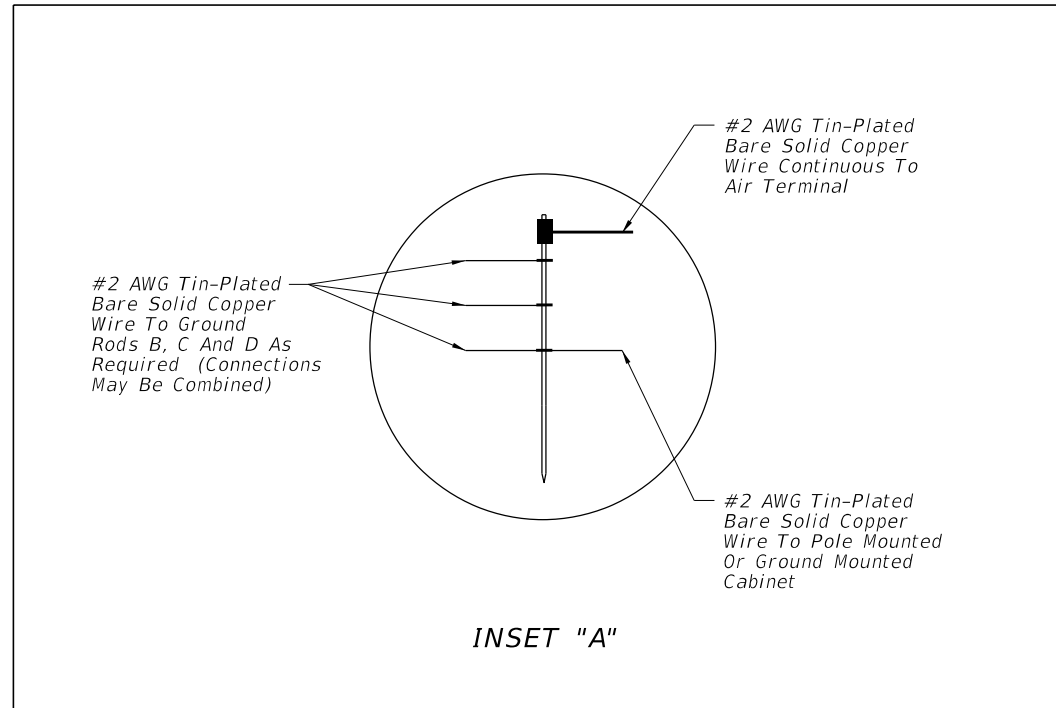


GROUND ROD ARRAY PLACEMENT
(Typical)
20' RODS, 40' SPACING

"Modified Sphere Of Influence: 90 Degree"



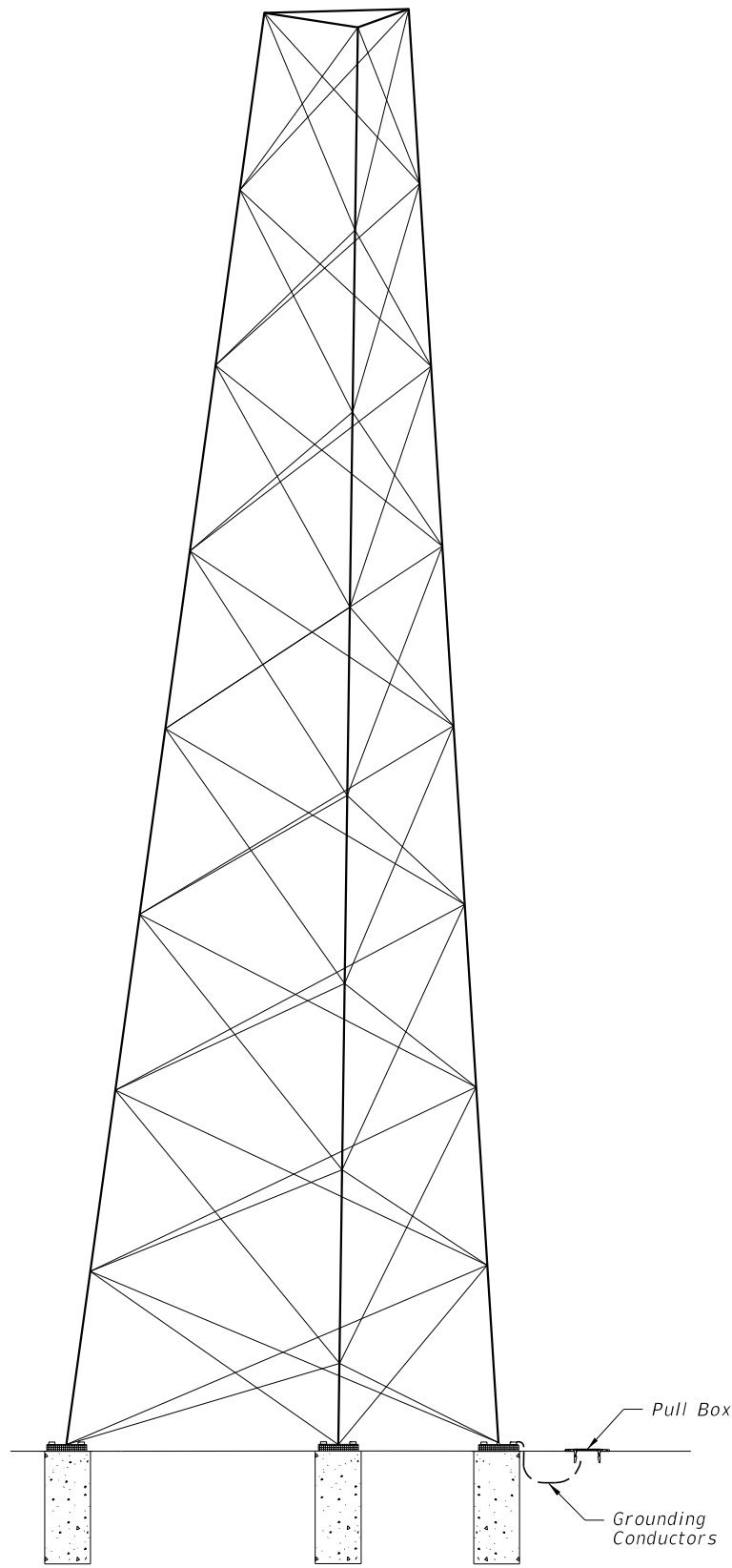
GROUND ROD ARRAY PLACEMENT
(Typical Modified)
20' RODS, 40' SPACING



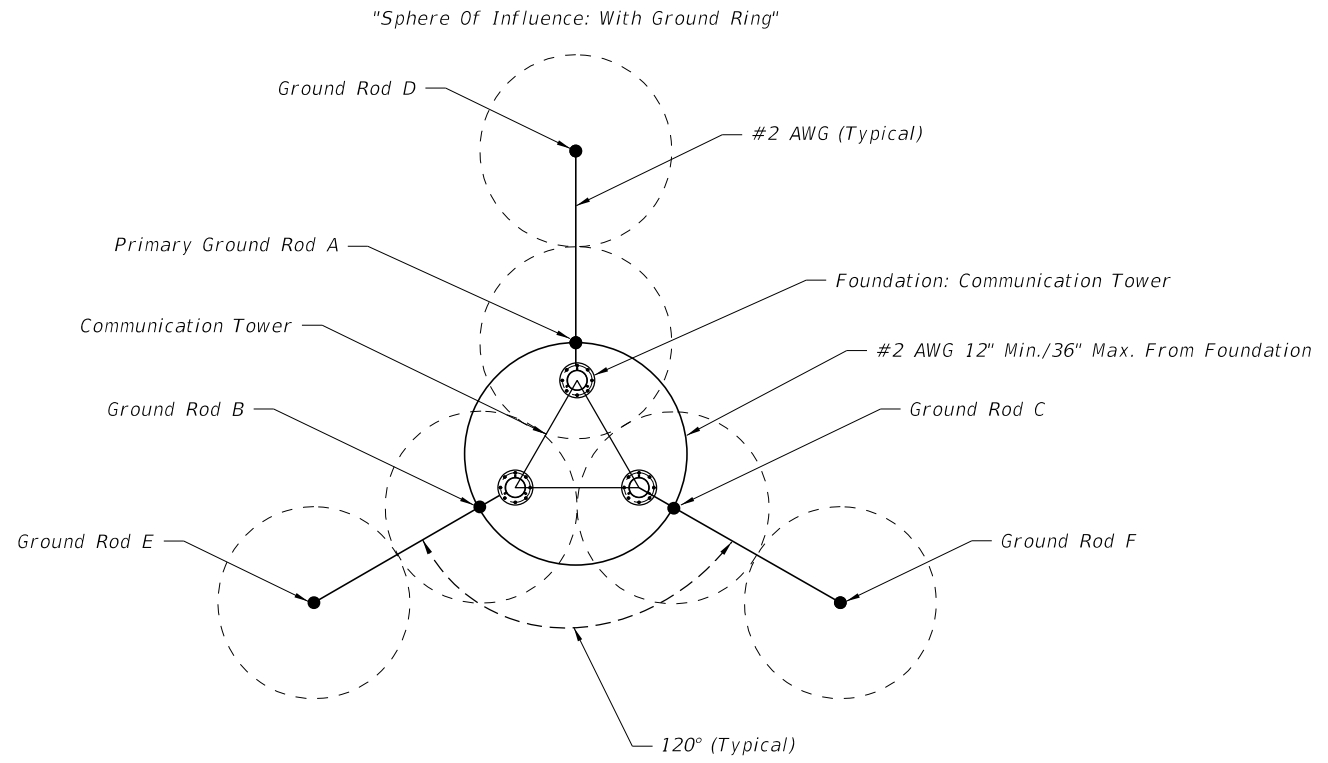
INSET "A"

11/30/2015 11:30:59 AM

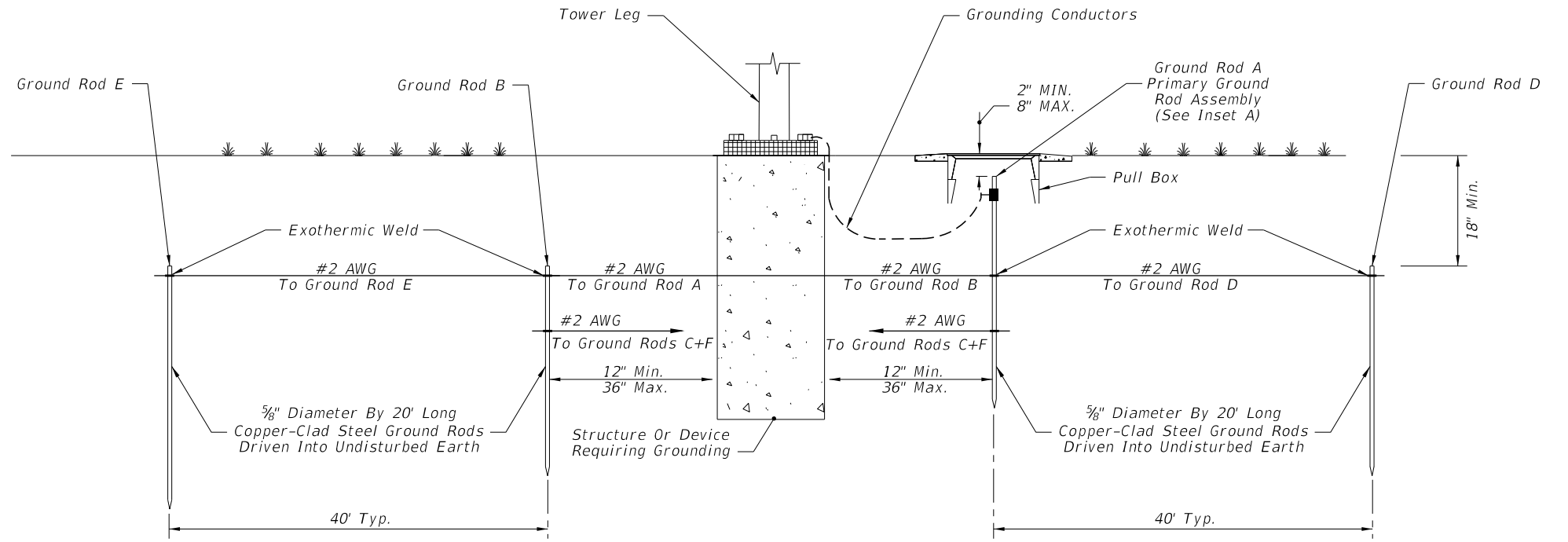
LAST REVISION 07/01/14	REVISION	DESCRIPTION:
---------------------------	----------	--------------



COMMUNICATION TOWER



GROUND ROD ARRAY PLACEMENT
(Communication Tower)
20' RODS, 40' SPACING



GROUND ROD ARRAY PROFILE
(Communication Tower)

11/30/2015 11:30:59 AM

LAST REVISION 07/01/14	REVISION	DESCRIPTION:
---------------------------	----------	--------------