

Index 20120 AASHTO Type II Beams (Rev. 01/16)

Design Criteria

AASHTO LRFD Bridge Design Specifications; Structures Detailing Manual (SDM); Structures Design Guidelines (SDG)

Design Assumptions and Limitations

Index 20120 is the standard for the AASHTO Type II Beam. Use this standard with Indexes 20005, 20199, 20510, and 20511 or 20512.

This standard must be supplemented with project specific information including a Table of Beam Variables, Strand Pattern Details and a Strand Debonding Legend which must be completed and included in the Structures Plans. This standard and the supplemental project specific information that is included in the plans provides sufficient information to permit beam fabrication without the submittal of shop drawings.

Data tables for associated Indexes 20005, 20199, 20510 and 20511 or 20512 must also be completed and included in the plans.

A Framing Plan is required for bridges meeting the criteria stated in the **SDM**.

The use of End Diaphragms is not preferred on simple span, pretensioned, I-Beam structures. In lieu of End Diaphragms, the preferred detail is a Thickened Slab End at all locations of slab discontinuity. Where End Diaphragms are required by design or for widening projects, partial depth diaphragms are preferred. See **SDM** Chapter 15 for suggested details.

Except for widening projects where special details may be required, squared beam ends are preferred on all pretensioned I-Beam structures.

The prestressed beams in these Standard Drawings are generally assumed to act as simple spans under both Dead Load and Live Load even where the deck is detailed to be continuous across the intermediate supports or back-to-back diaphragms are present. For detailing purposes, Prestressed I-Beams are assumed to be erected plumb.

When the total initial tensioning force of the fully bonded strands required by design exceeds the value shown below, shield additional strands at the end of the beam when possible. The end reinforcement may only be redesigned to accommodate an increased vertical splitting force when approved by the State Structures Design Office. If approval is granted, Index 20120 must then be modified for inclusion in the contract documents and signed and sealed by the EOR.

To limit vertical splitting forces in the webs of beams, the maximum prestress force at the beam ends from fully bonded strands must be limited to the following:

Index No.	Beam Type	Max. Bonded Prestress Force	Last Revision Date
20120	AASHTO Type II	755 Kips	07/01/05 or later

Do not apply losses when calculating the Bonded Prestress Force.

If the beam grade exceeds 2%, provide Embedded Bearing Plates and Beveled Bearing Plates at each end of the beam as shown on Index 20511 or 20512.

See additional instructions in the **SDG**.

Plan Content Requirements

In the Structures Plans:

Complete the appropriate "TABLE OF BEAM VARIABLES" and include it in the plans. Use additional sheets when the actual number of beams or strand patterns exceeds the capacity of a single plan sheet using the standard table. Supplemental details and modifications are permitted if special conditions require dimensions, details or notes. However, the "TABLE OF BEAM VARIABLES" itself should not be modified. See [Introduction I.3](#) for more information regarding use of Data Tables.

Report elastic and time dependent shortening effects (DIM R) at the top of the beam @ 120 days. The average of the calculated values for the top and bottom of the beam may be used.

Report DIM P for beams placed on grade if the calculated value is equal or greater than 1" using $\frac{1}{8}$ " increments.

Show strands in the outermost positions of the lowest row to support Bars D.

Round Angle Φ up to the nearest degree.

Specify shear stirrup spacings V1, V2 and V3 for Bars 4K or 5K to the nearest inch.

Prepare a Framing Plan for bridges meeting the criteria stated in the **SDM**.

When intermediate diaphragms are required by design, show them on the Framing Plan. Tabulate insert locations with respect to the beam ends and beam faces. Include length adjustments for beams placed on grade and for elastic and time dependent shortening effects. Show Type 33 No. 8 reinforcing bars with 3" thread lengths for attachment to the inserts on the intermediate diaphragm details. Include these bars in the Superstructure Reinforcing Bar list.

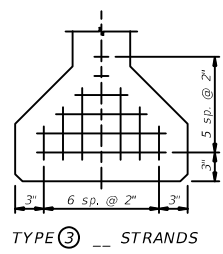
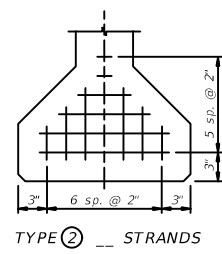
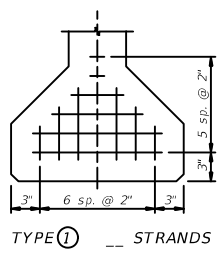
For bridge widenings where beam ends are encased in full height diaphragms and the diaphragms are to be extended, modify Index 20120 and include it in the plans as follows:

- Modify the Design Standards in accordance with Method 1, Method 2 or Method 3 as defined in the [Terms Of Use](#) for the Borderless DGNs provided in the Design Standards eBooklet.
- Remove all notes, call-outs and details regarding cutting the strands and coating the ends of the beams with epoxy.
- Insert all notes, call-outs and details to ensure proper placement of Bars 4L as shown in the 2010 Design Standards. Detail the number of bars, bar locations and bar bending diagrams

Table 20120 - AASHTO Type II Beam - Table of Beam Variables

AASHTO TYPE II BEAM - TABLE OF BEAM VARIABLES

LOCATION		CONCRETE PROPERTIES		STND.	END	PLAN VIEW		BRG. PLATE		END OF BEAM & BEARING DIMENSIONS **				BEAM		REINFORCING STEEL															
SPAN NO.	BEAM NO.	CLASS	STRENGTHS (psi)		PTRN.	ELEV.	CASE		MARK ***		ANGLE θ		DIM P	DIM J	DIM K1	DIM K2	DIMENSIONS *		3D1		3D2		4K NO. OF SPACES BARS 4K				SPACING BARS 4K *				
			28 Day	Release	TYPE	COND.	END 1	END 2	END 1	END 2	END 1	END 2					DIM L	DIM R	B	Length	B	Length	NO.	S1	S2	S3	S4	V1	V2	V3	V4



STRAND DEBONDING LEGEND

- - fully bonded strands.
- ⊙ - strands debonded "___" from end of beam.
- ⊠ - strands debonded "___" from end of beam.
- ⊡ - strands debonded "___" from end of beam.
- ◇ - strands debonded "___" from end of beam.

NOTE: On beams with skewed ends the debonded length shall be measured along the debonded strand.

NOTE: Work this sheet with Design Standards Index No. 20120.

DIMENSION NOTES

* All longitudinal beam dimensions shown on this sheet with a single asterisk (*) are measured along the top of beam at the centerline of beam.

** End of beam bearing dimensions "J" and "K" are measured along the bottom of the beam.

BEARING PLATES

*** Mark indicates beveled bearing plate and embedded bearing plate required. See Index No. 20511 or 20512 for details.

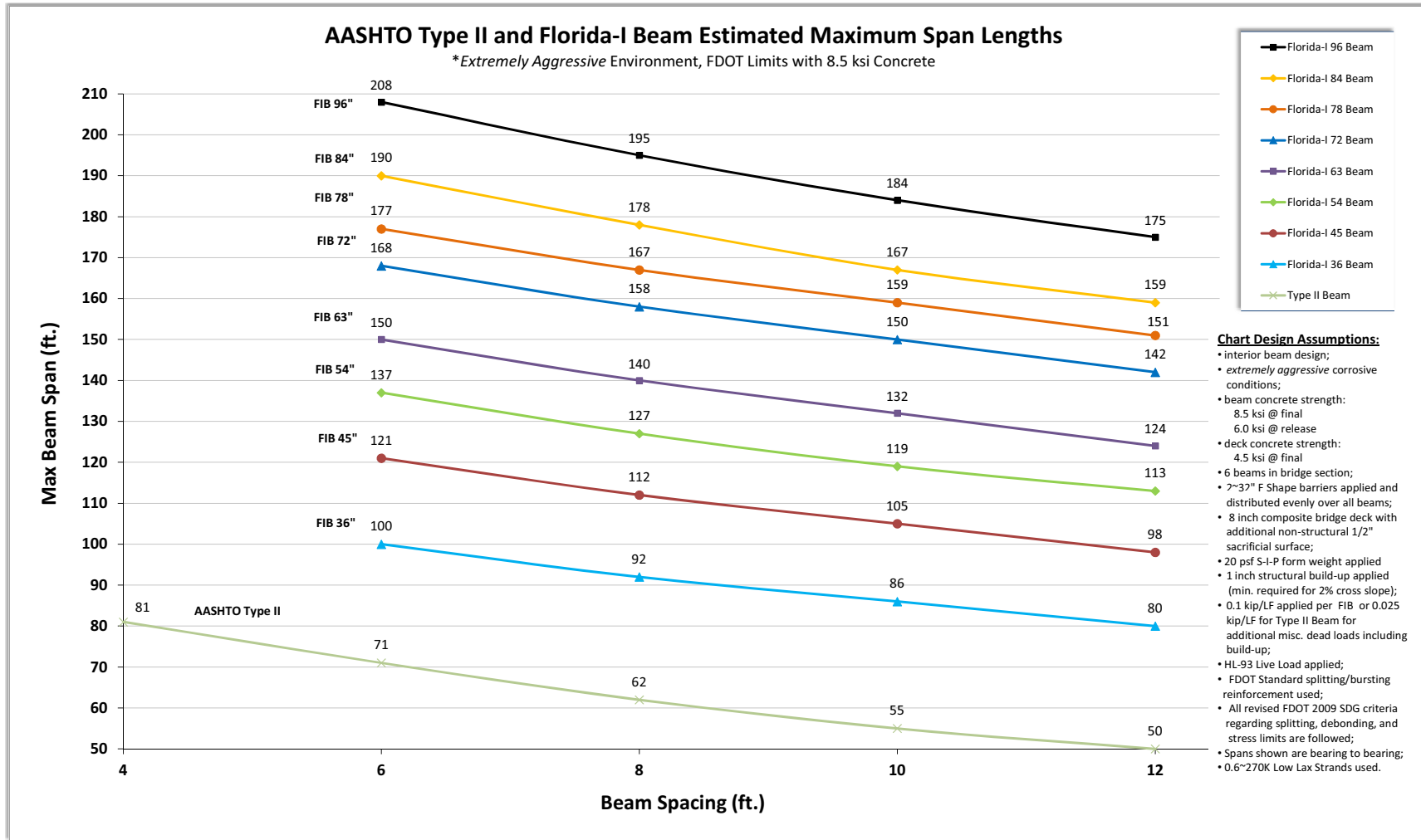
STRAND DESCRIPTION: Use ___ Diameter, Grade 270 Low-Relaxation Carbon Steel Strands stressed at ___ kips each. Area per strand equals ___ sq. in.

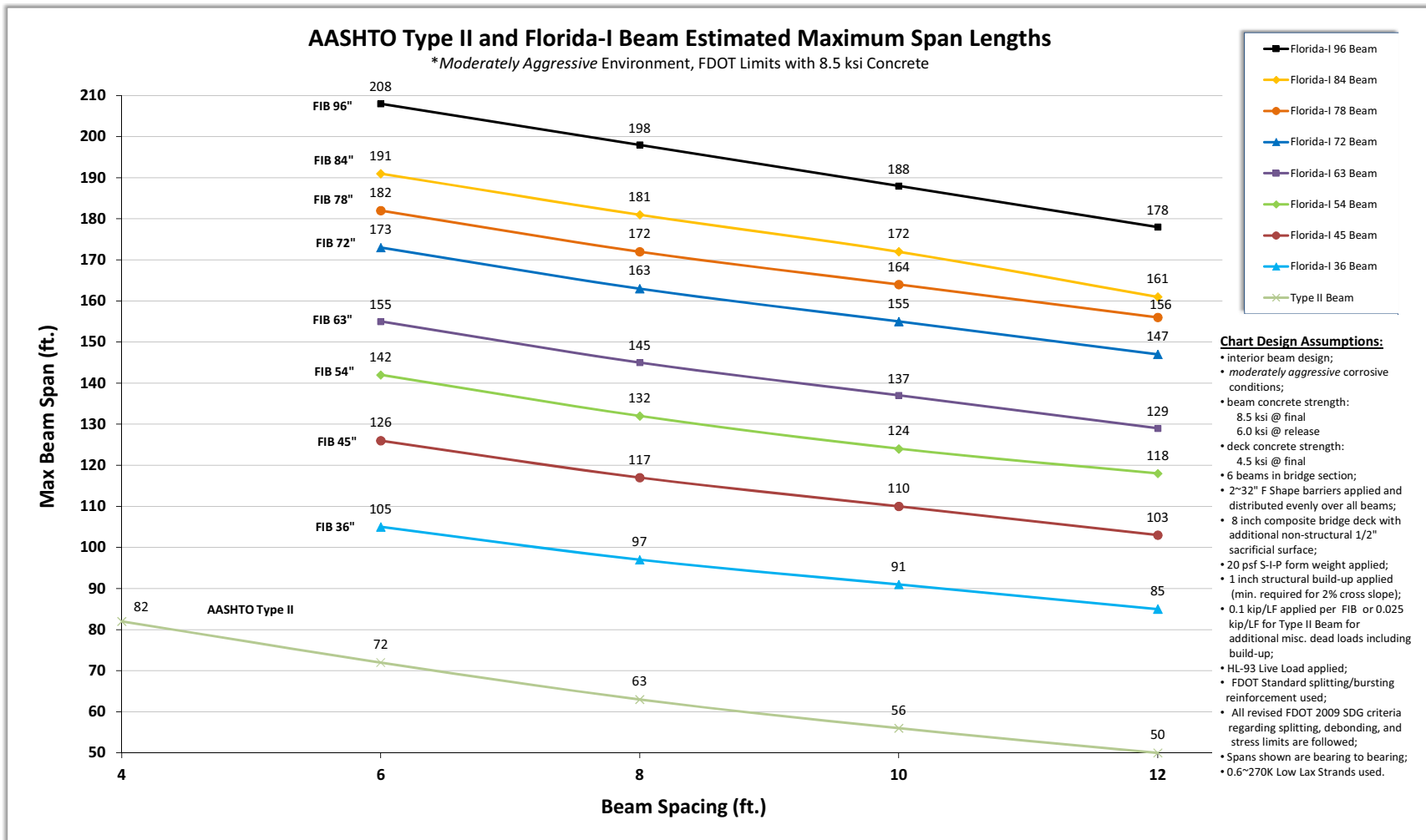
STRAND PATTERNS

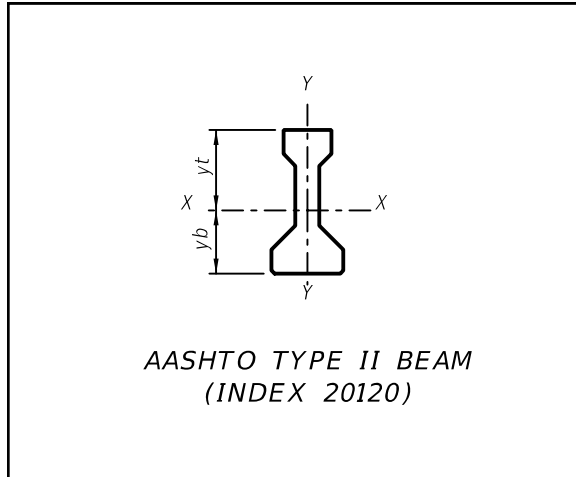
Payment

Item number	Item description	Unit Measure
450-1-AAA	Prestressed Beams	LF

Design Aids







SECTION PROPERTIES*	
Area (in. ²)	369
I _{xx} (in. ⁴)	50,979
I _{yy} (in. ⁴)	5,333
y _t (in.)	20.17
y _b (in.)	15.83

* These section properties are based on gross section properties and neglect the 3/4" chamfers on the bottom flanges.