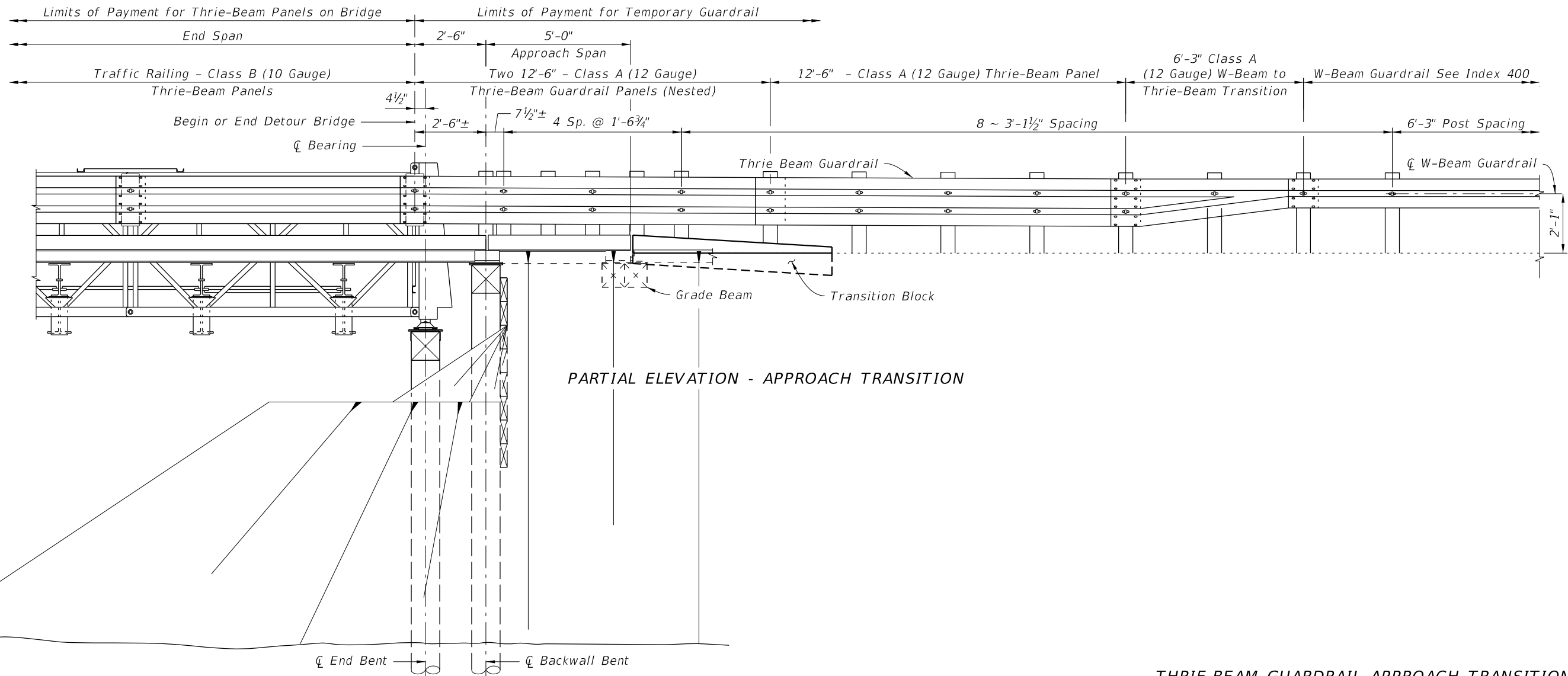


PARTIAL PLAN - APPROACH TRANSITION

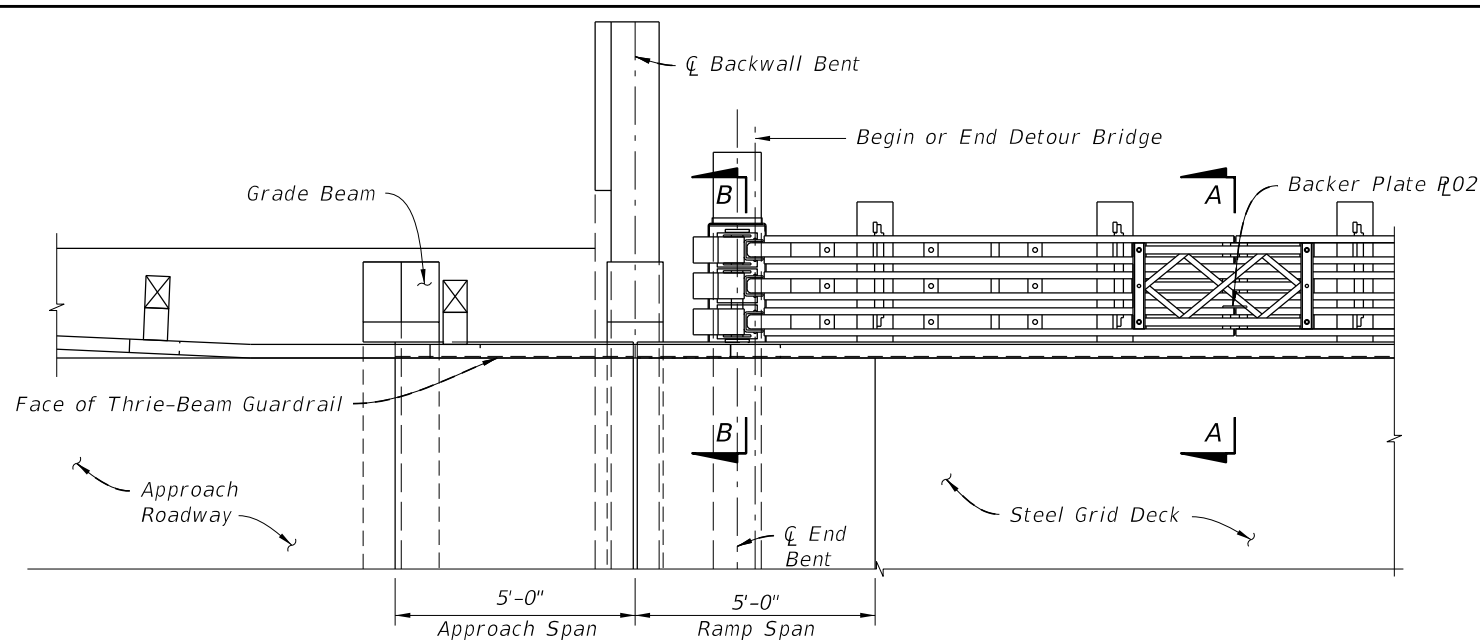


PARTIAL ELEVATION - APPROACH TRANSITION

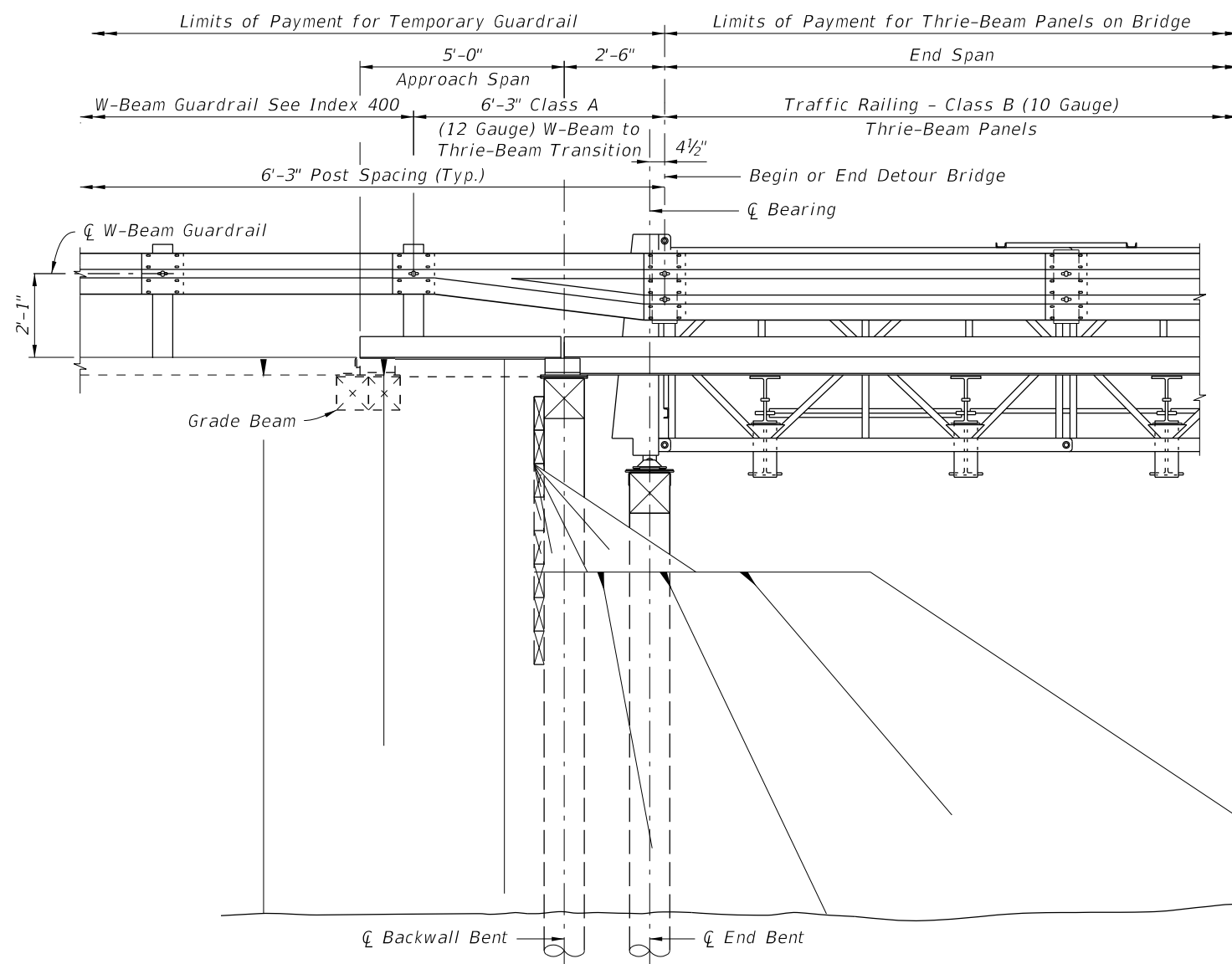
6/24/2015 7:53:06 AM

THRIE-BEAM GUARDRAIL APPROACH TRANSITION

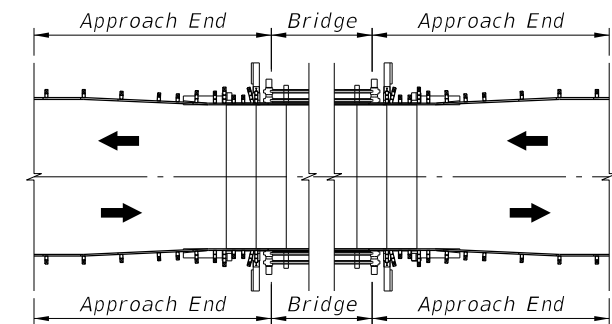
LAST REVISION	REVISION	DESCRIPTION:	 2016 DESIGN STANDARDS	TEMPORARY DETOUR BRIDGE THRIE-BEAM GUARDRAIL	INDEX NO. 21640	SHEET NO. 1 of 6
---------------	----------	--------------	---	---	---------------------------	----------------------------



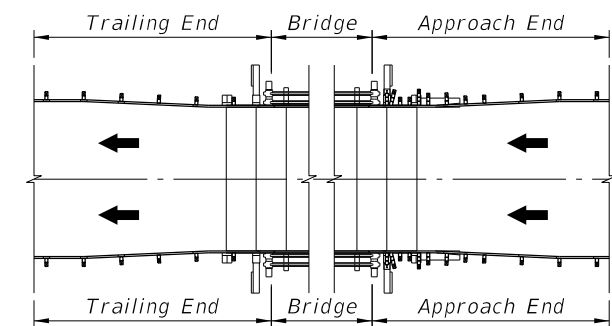
PARTIAL PLAN - TRAILING END



PARTIAL ELEVATION - TRAILING END



TWO-WAY TRAFFIC



ONE-WAY TRAFFIC

END TRANSITION APPLICATION DETAILS

6/24/2015 7:53:07 AM

LAST REVISION 07/01/15	DESCRIPTION:
---------------------------	--------------

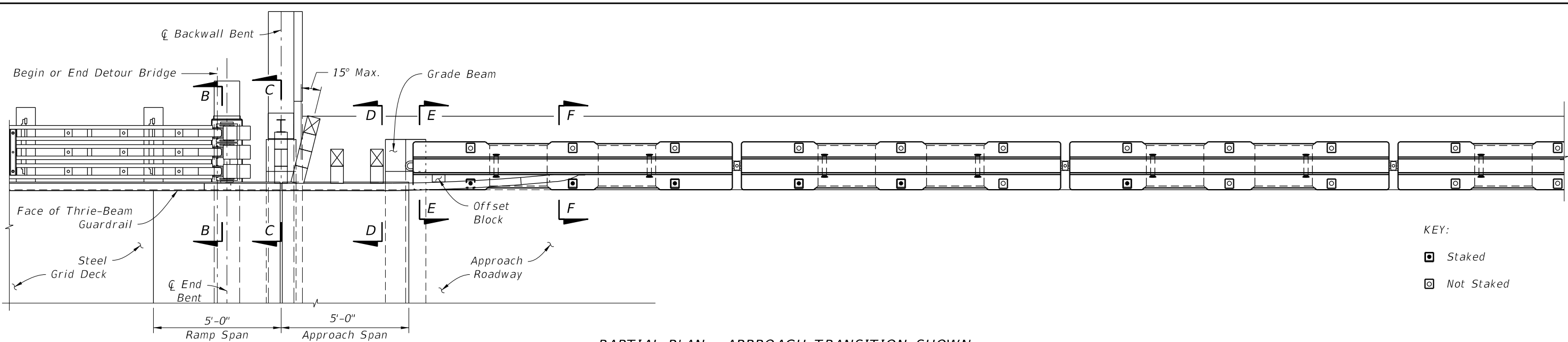


TEMPORARY DETOUR BRIDGE
THRIE-BEAM GUARDRAIL

INDEX NO.
21640

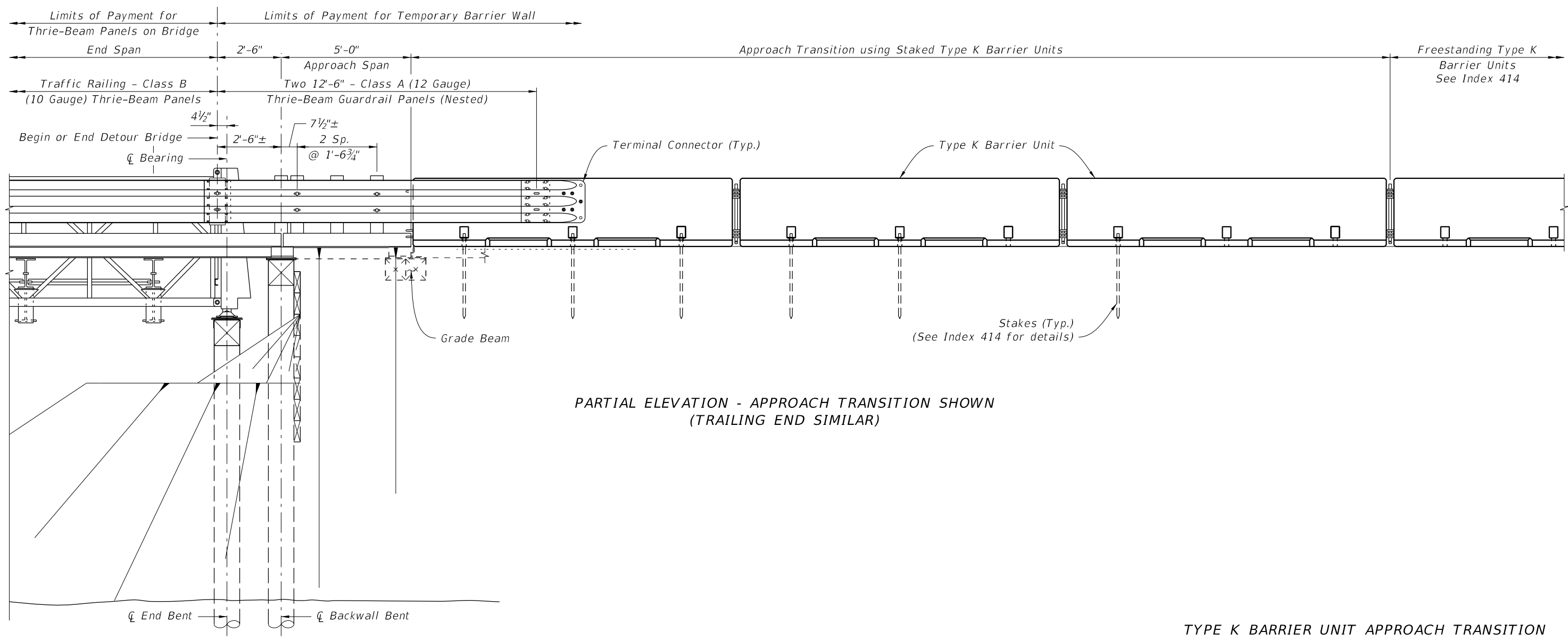
SHEET NO.
2 of 6

THRIE-BEAM GUARDRAIL TRAILING END TRANSITION



KEY:
 □ Staked
 □ Not Staked

PARTIAL PLAN - APPROACH TRANSITION SHOWN
 (TRAILING END SIMILAR)

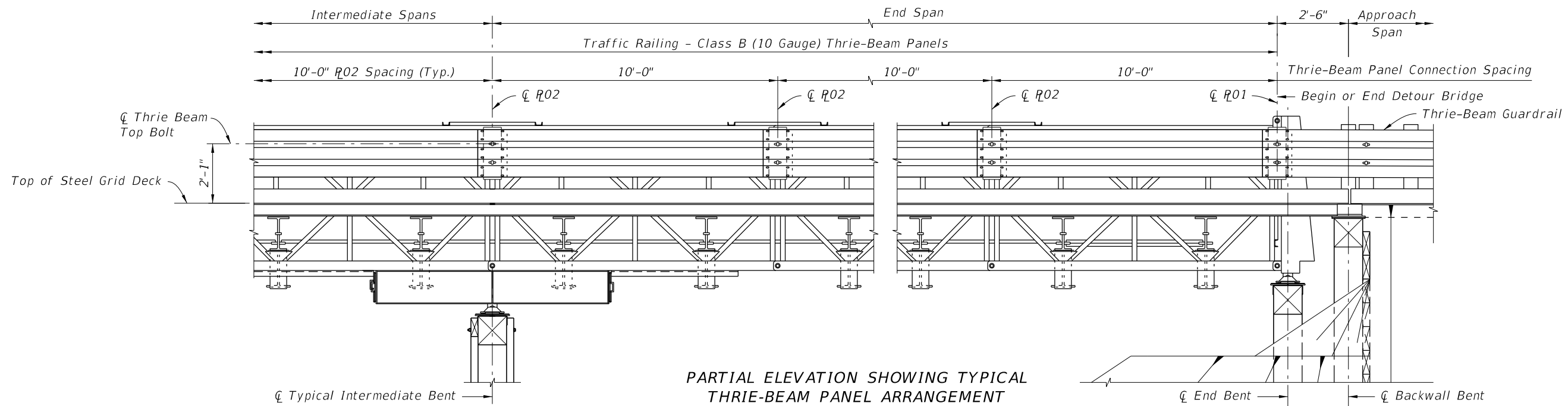


PARTIAL ELEVATION - APPROACH TRANSITION SHOWN
 (TRAILING END SIMILAR)

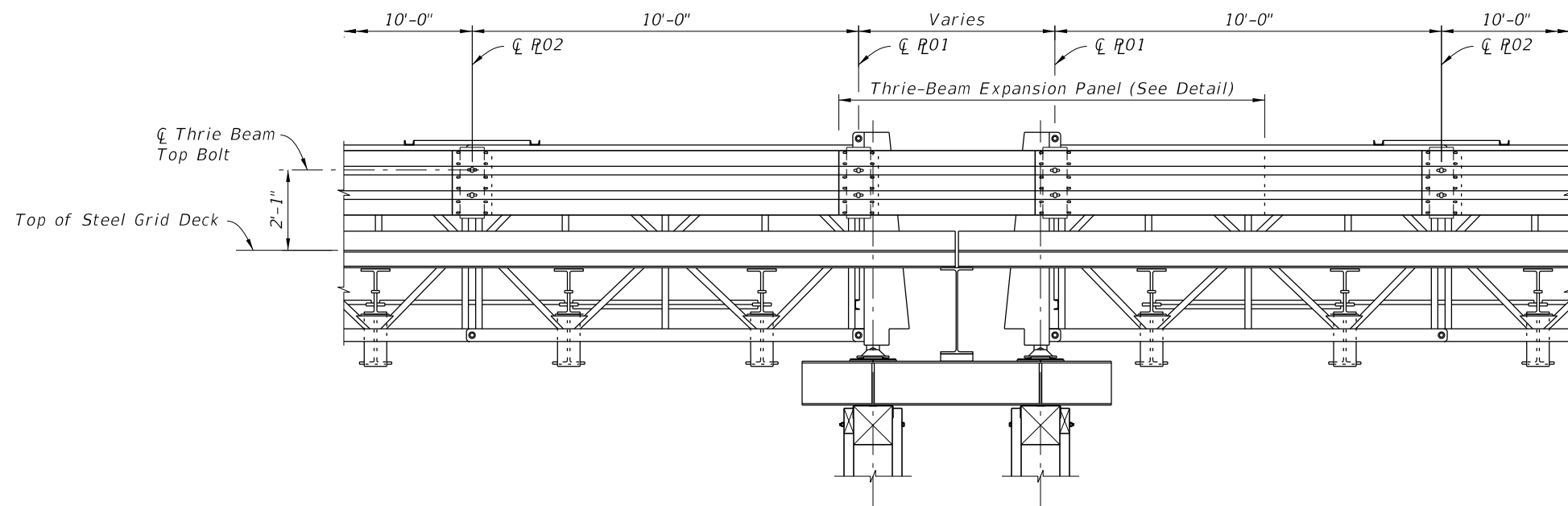
6/30/2015 11:24:07 AM

TYPE K BARRIER UNIT APPROACH TRANSITION

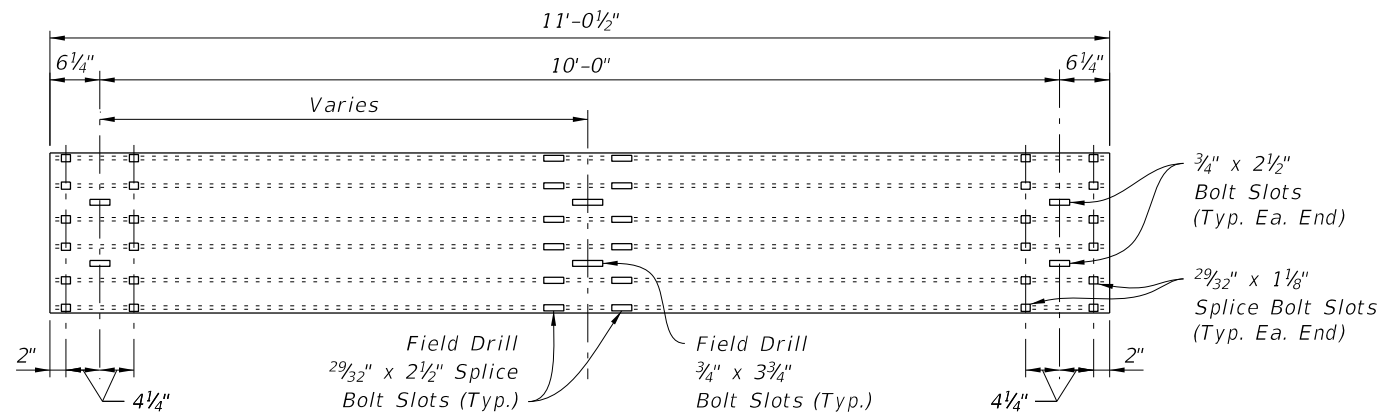
LAST REVISION	07/01/15	DESCRIPTION:	2016 DESIGN STANDARDS	TEMPORARY DETOUR BRIDGE THRIE-BEAM GUARDRAIL	INDEX NO. 21640	SHEET NO. 3 of 6
---------------	----------	--------------	-----------------------	---	--------------------	---------------------



PARTIAL ELEVATION SHOWING TYPICAL THRIE-BEAM PANEL ARRANGEMENT



PARTIAL ELEVATION SHOWING THRIE-BEAM PANELS AT EXPANSION JOINT



THRIE-BEAM EXPANSION PANEL DETAIL

6/24/2015 7:53:08 AM

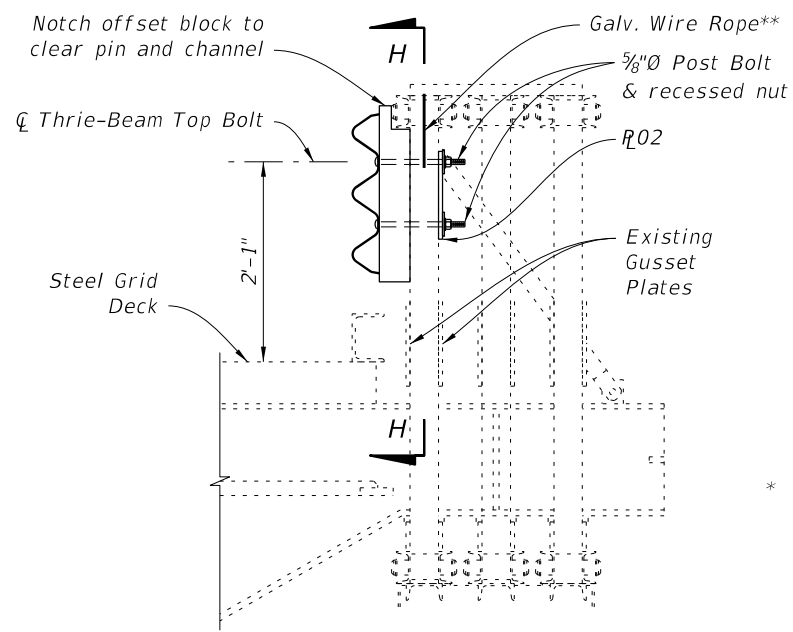
LAST REVISION 07/01/15	DESCRIPTION:
---------------------------	--------------



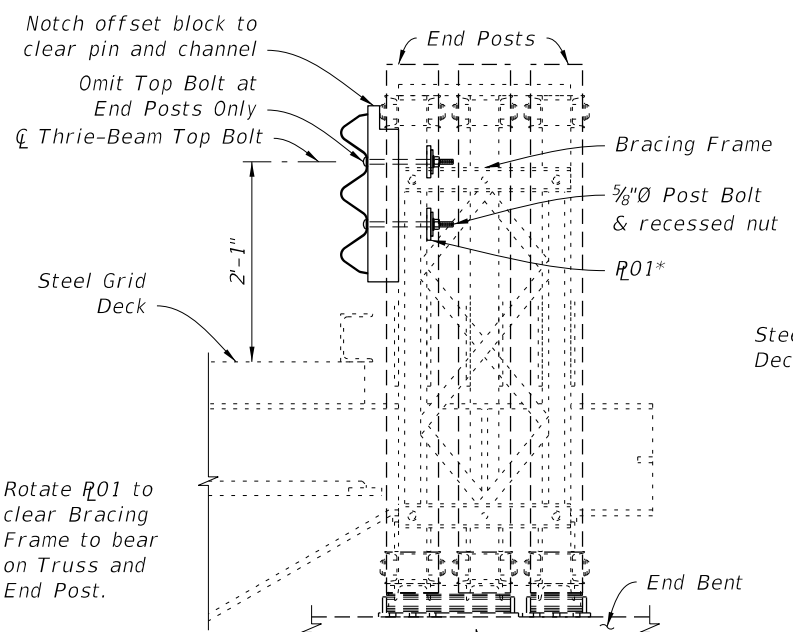
TEMPORARY DETOUR BRIDGE
THRIE-BEAM GUARDRAIL

INDEX NO.
21640

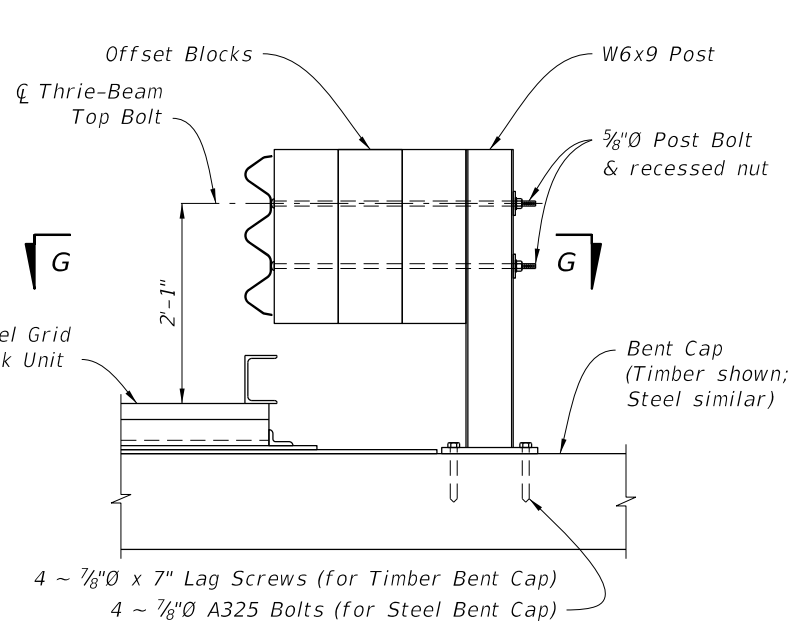
SHEET NO.
4 of 6



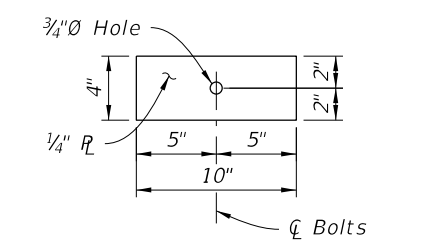
SECTION A-A



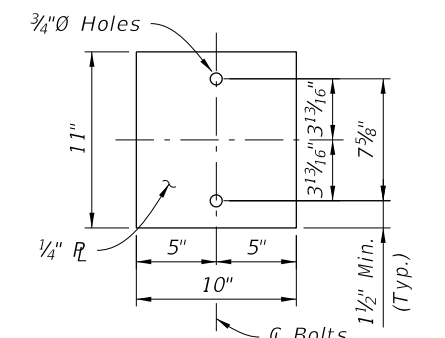
SECTION B-B



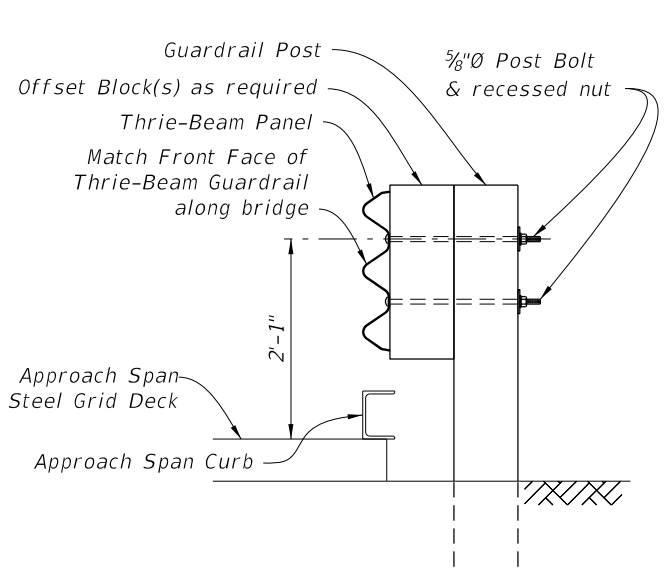
SECTION C-C



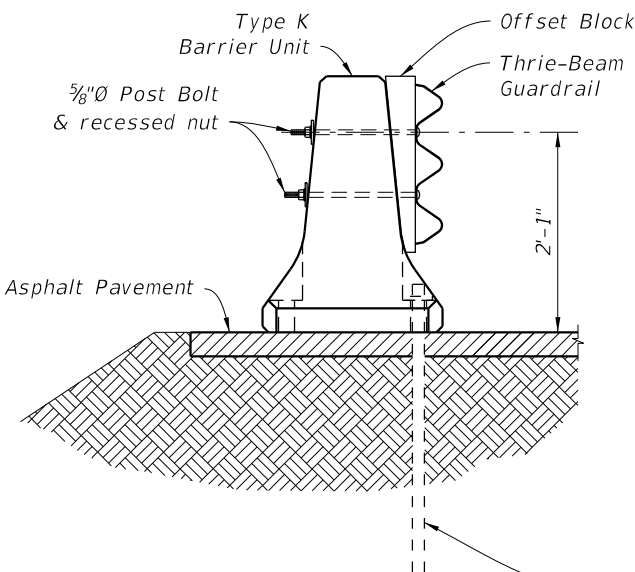
BACKER PLATE R01 DETAIL



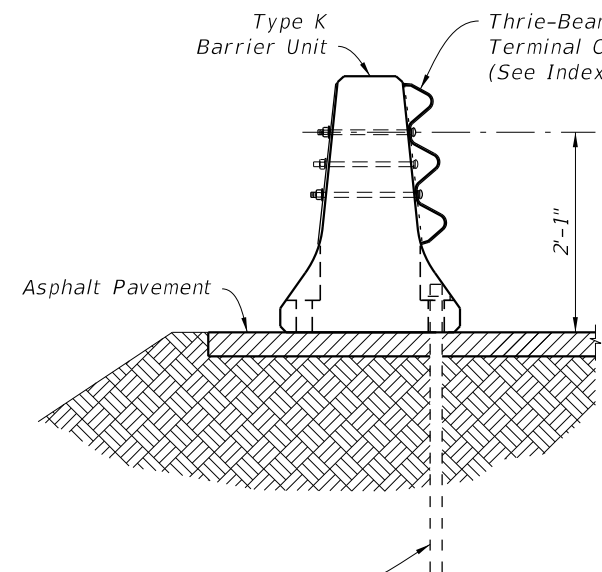
BACKER PLATE R02 DETAIL



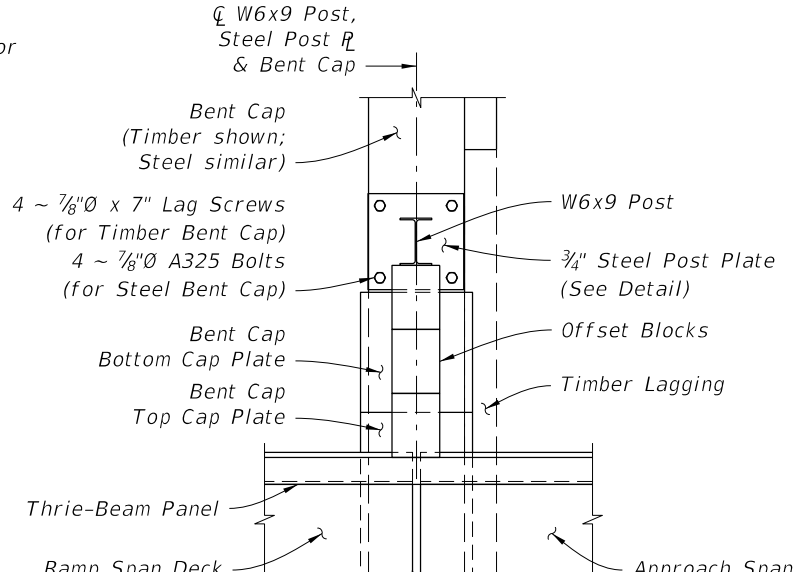
SECTION D-D



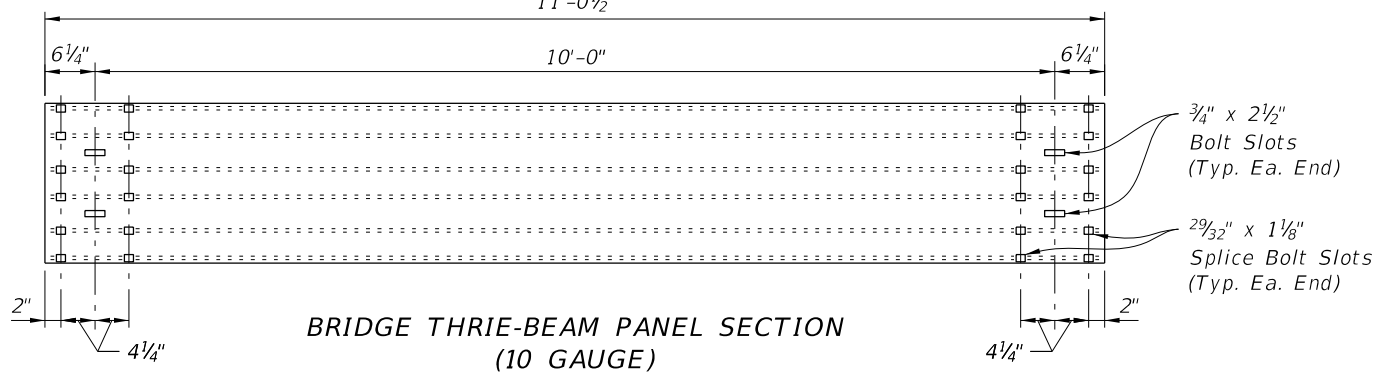
SECTION E-E



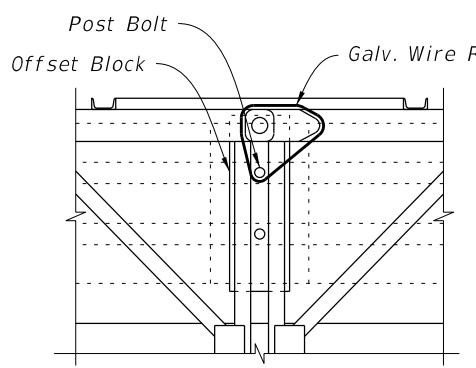
SECTION F-F



VIEW G-G
(Adjacent Post and Offset Blocks not shown for clarity)

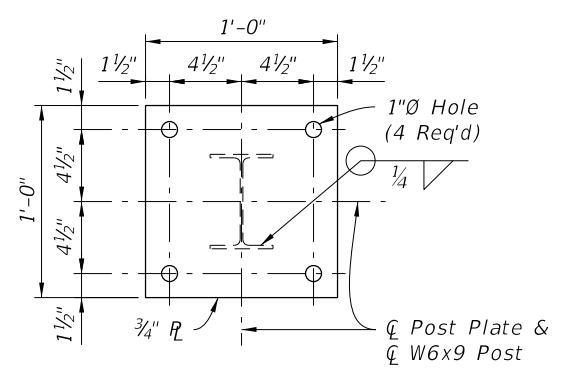


BRIDGE THRIE-BEAM PANEL SECTION
(10 GAUGE)



SECTION H-H

** As directed by the Engineer in order to limit vibration induced vertical displacement of the Thrie-Beam Panels, provide Contractor supplied, one time use, commercially available 3/16 inch (Min.) Galvanized Wire Rope w/ Ferrules (or other approved wire type) positioned and tensioned as required to secure the Panels.



STEEL POST PLATE DETAIL

SECTIONS AND DETAILS

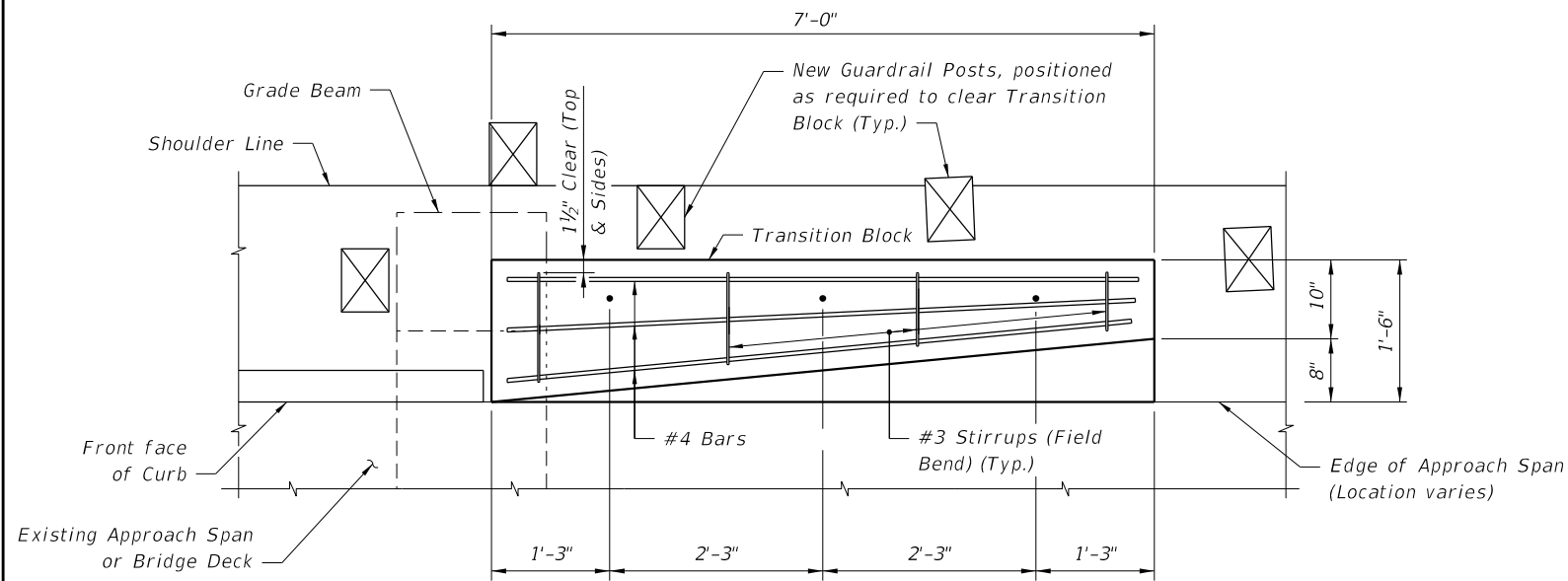
6/24/2015 7:53:09 AM

LAST REVISION 07/01/15	REVISION	DESCRIPTION:
---------------------------	----------	--------------

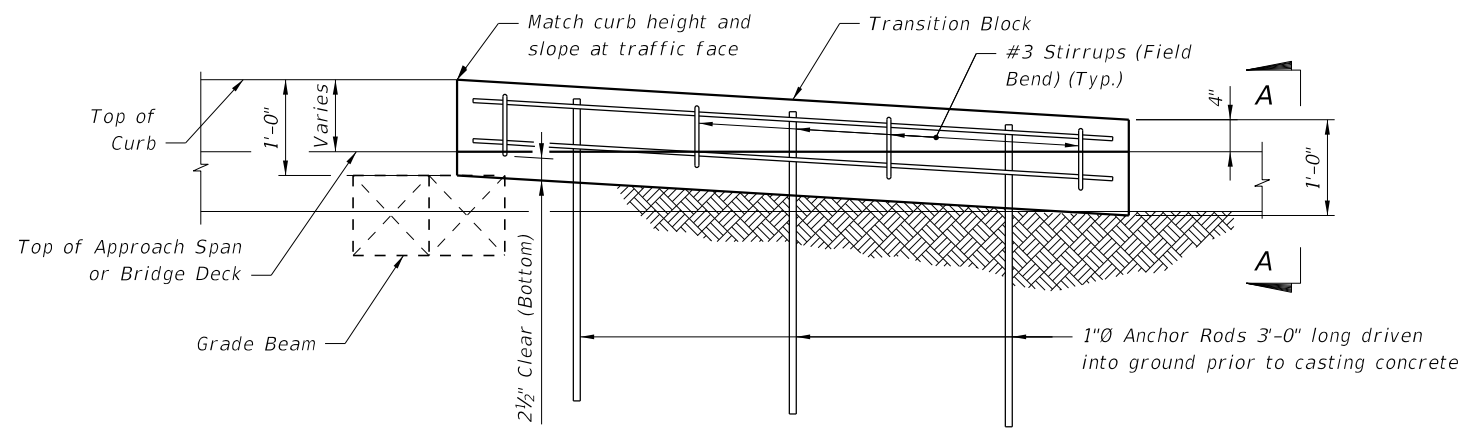


TEMPORARY DETOUR BRIDGE
THRIE-BEAM GUARDRAIL

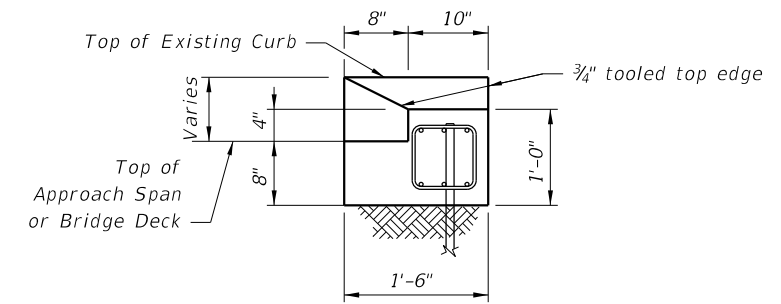
INDEX NO. 21640	SHEET NO. 5 of 6
--------------------	---------------------



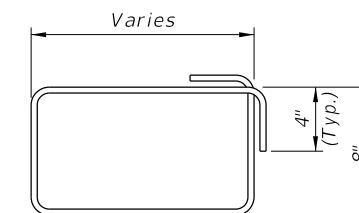
PLAN VIEW OF TRANSITION BLOCK
(GUARDRAIL NOT SHOWN FOR CLARITY)



ELEVATION OF TRANSITION BLOCK
(GUARDRAIL AND POSTS NOT SHOWN FOR CLARITY)



END VIEW A-A



#3 STIRRUP (FIELD BEND)

NOTES:

REINFORCING STEEL: Reinforcing steel shall be ASTM A615, Grade 60.

ANCHOR RODS: Steel Anchor Rods shall be ASTM A36, ASTM A709 Grade 36 or ASTM A615 Grade 60 hot-dip galvanized in accordance with Specification Section 962.

ESTIMATED QUANTITIES

ITEM	UNIT	QUANTITY
Concrete Class NS	CY	0.4
Reinforcing Steel	LB	61
Guardrail (Reset)	LF	12.5

6/24/2015 7:53:12 AM

LAST REVISION 07/01/13	DESCRIPTION:
---------------------------	--------------