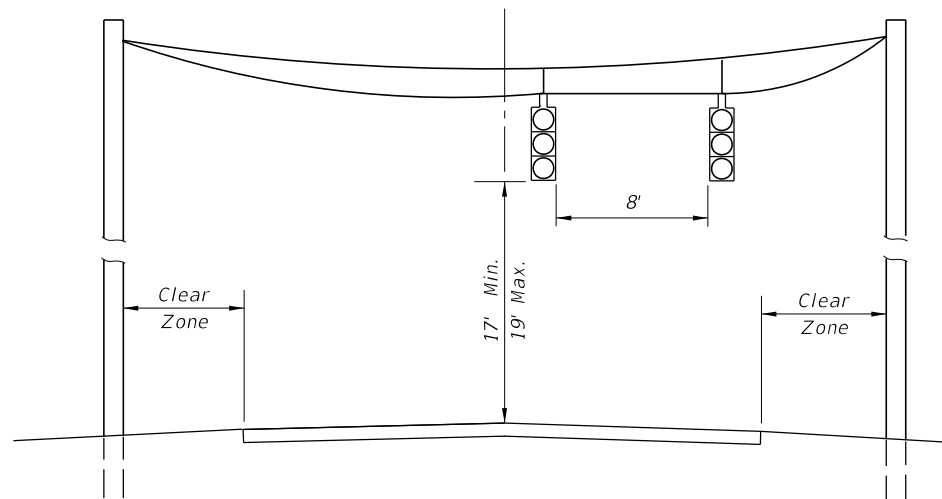


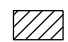
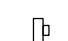




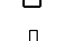
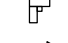

PORTABLE SIGNALS



SPAN WIRE SIGNALS

SIGNAL MOUNT DETAILS

SYMBOLS

-  Work Area
-  Work Zone Sign
-  Traffic Signal
-  Channelizing Device (See Index No. 600)
-  Type III Barricade
-  Stop Bar
-  Flagger
-  Portable Signal
-  Lane Identification + Direction of Traffic


GENERAL NOTES

1. Work operations shall be confined to one traffic lane, except for haul road crossings, leaving the opposite lane open to traffic.
2. The installation and timing of signals shall be approved by the District Traffic Operations Engineer prior to signals being placed in operation.  
  
Where sight distance to the signal is limited, the signals may be mounted on span wire or relocated at the discretion of the Engineer.  
  
Whether the signals are in automatic mode or being controlled manually, in no case will the distance between the portable signals (receiver/controllers) exceed the maximum distance at which both of the portable signals can be positively and safely operated.
3. Additional signals or flaggers may be required to assure safe movements between traffic and operating equipment, as determined by the Engineer.
4. An additional warning sign may be required in advance of the ROAD WORK AHEAD sign, as determined by the Engineer. The distance between successive signs shall be 500'.
5. The SIGNAL AHEAD legend sign may be substituted for the symbol sign.
6. SIGNAL AHEAD and EQUIPMENT CROSSING AHEAD signs are to be removed or fully covered when no work is being performed and the highway is open to two-way traffic. Type III Barricades shall be in place to block haul road access when the haul road is not in operation and a flagger/signal operator is not on duty, except when the haul road is an existing properly marked road.
7. When a side road intersects the highway within the TTC zone, additional TTC devices shall be placed in accordance with other applicable TCZ Indexes.
8. For general TCZ requirements and additional information, refer to Index No. 600.
9. Span wire signals are to be used only in work zones with workers present, where the contractor can monitor signal operation and maintain traffic with flaggers in the event of a power failure.
10. Use Temporary Raised Rumble Strips in accordance with Index 603, General Note #3.

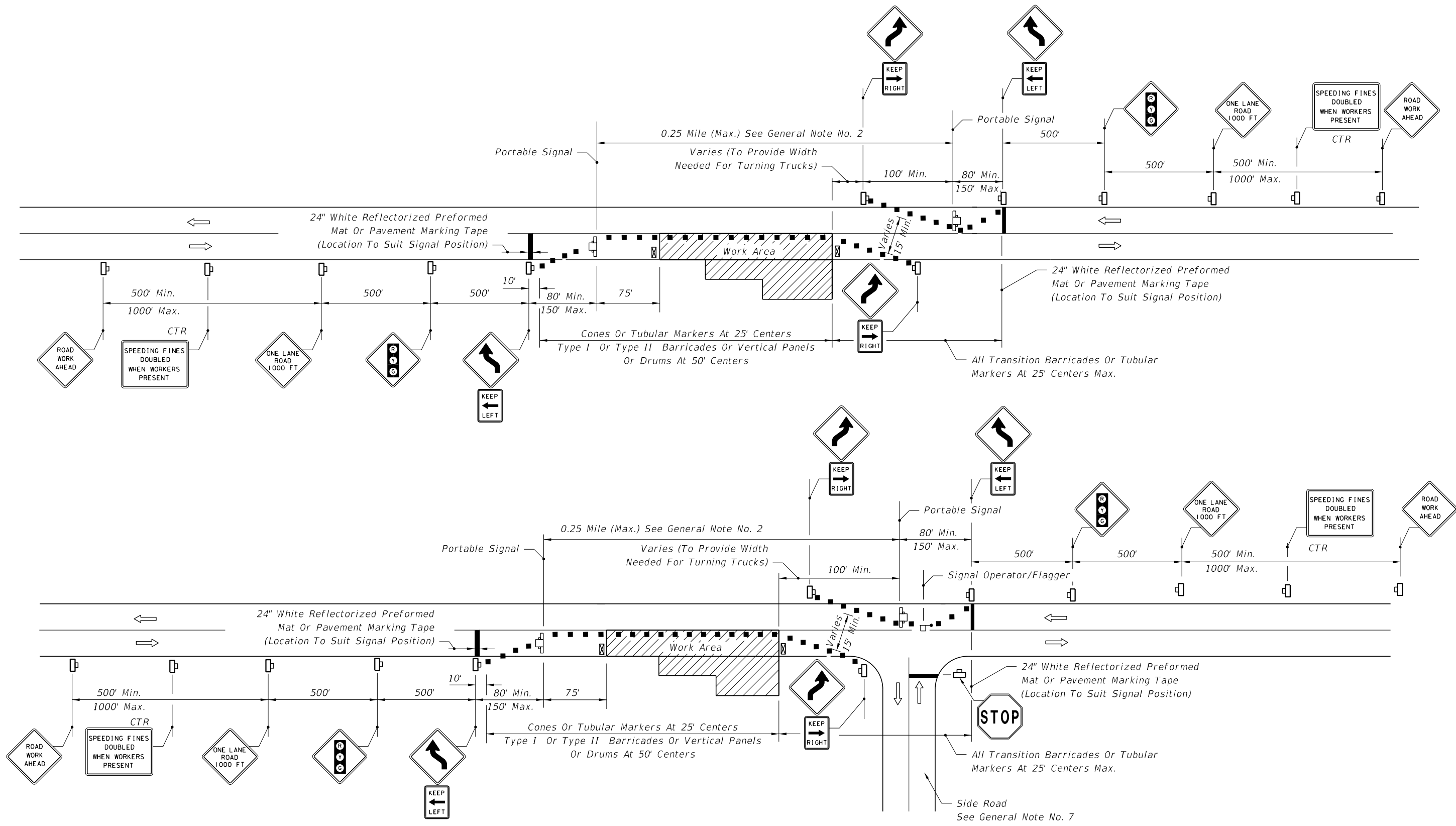
CONDITIONS

WHERE ANY VEHICLE, EQUIPMENT, WORKERS OR THEIR ACTIVITIES WILL ENCROACH ON ONE LANE OR MOMENTARILY ENCROACH ON BOTH LANES OF A TWO-LANE TWO-WAY ROADWAY AND TRAFFIC SIGNALS ARE NEEDED.

6/16/2015 10:47:51 AM

LAST REVISION 07/01/15	REVISION	DESCRIPTION:	 <b>2016</b> DESIGN STANDARDS	<b>TWO-LANE, TWO-WAY, WORK WITHIN THE TRAVEL WAY - SIGNAL CONTROL</b>	INDEX NO. <b>606</b>	SHEET NO. <b>1 of 4</b>
---------------------------	----------	--------------	--	---	-------------------------	----------------------------

6/16/2015 10:47:51 AM



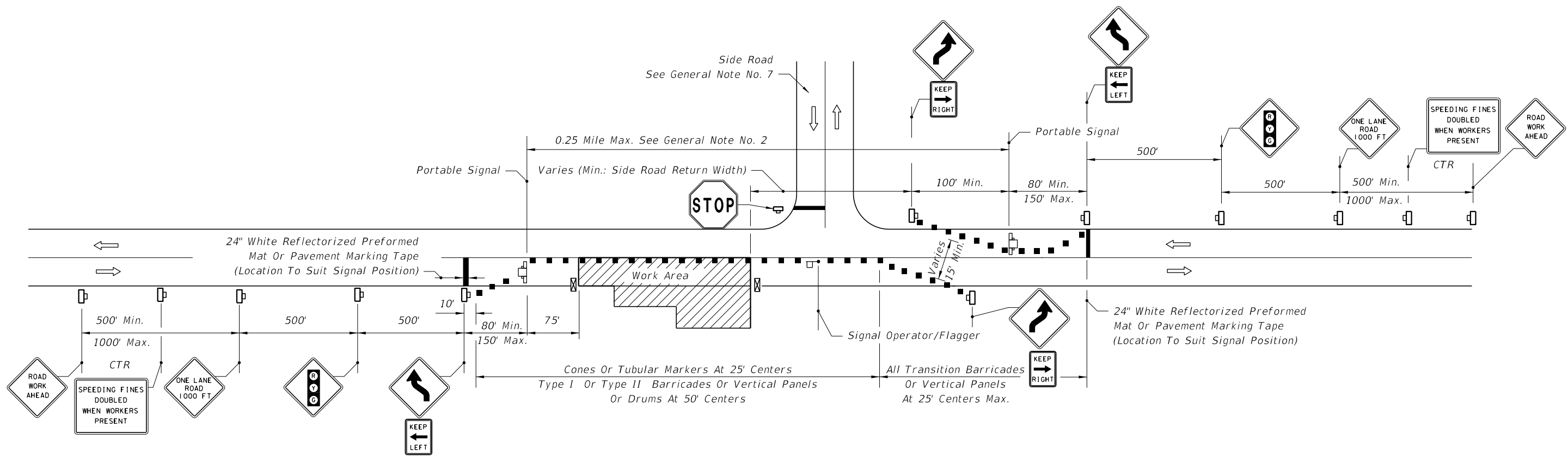
**SINGLE LANE CLOSURE • ROADWAY AND BRIDGES ALL LENGTHS**

LAST REVISION 07/01/15	DESCRIPTION:
---------------------------	--------------

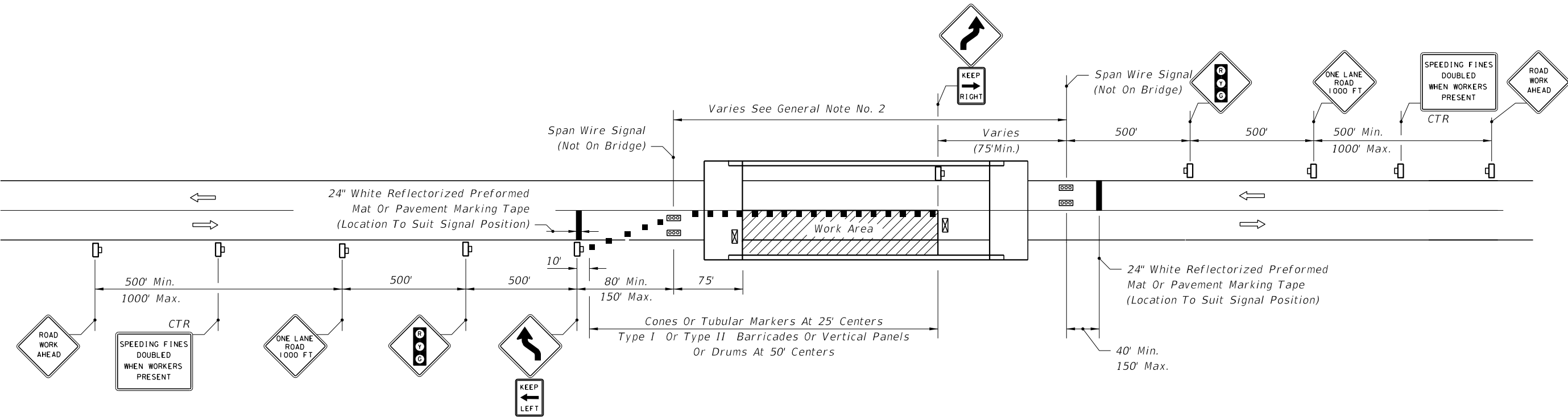


**TWO-LANE, TWO-WAY, WORK WITHIN THE TRAVEL WAY - SIGNAL CONTROL**

INDEX NO. 606	SHEET NO. 2 of 4
------------------	---------------------



**SINGLE LANE CLOSURE • ROADWAY AND BRIDGES ALL LENGTHS**

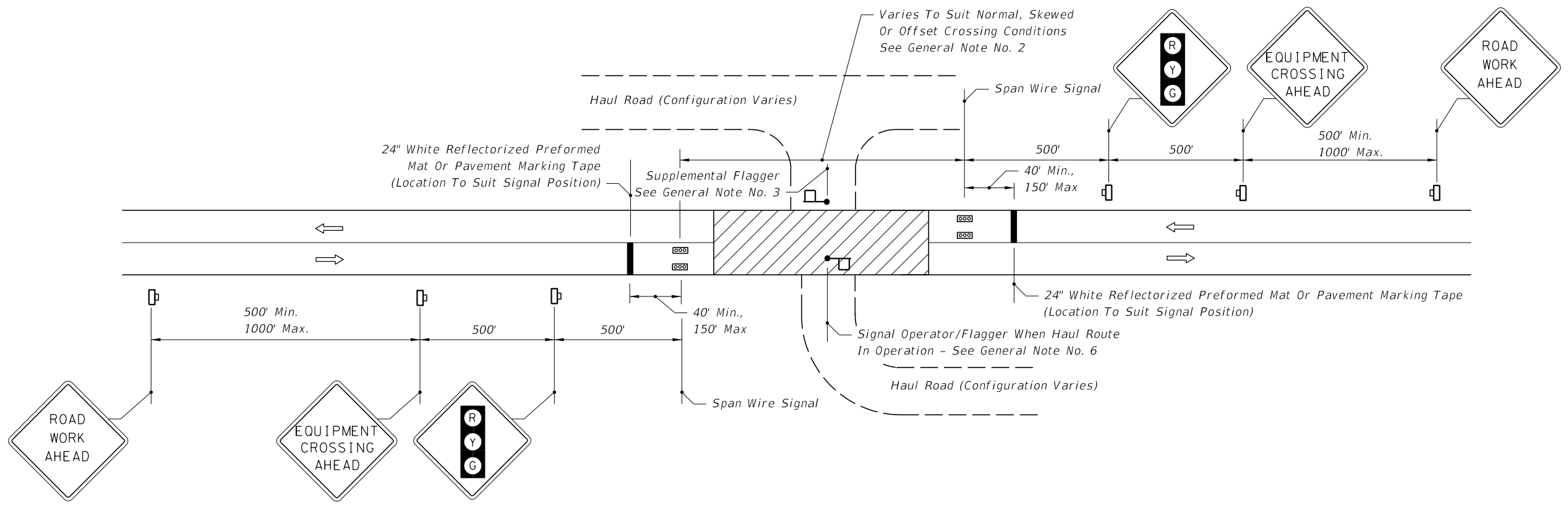


**SINGLE LANE CLOSURE • SHORT BRIDGES**

6/16/2015 10:47:52 AM

LAST REVISION 07/01/15	REVISION	DESCRIPTION:	 <b>2016</b> DESIGN STANDARDS	<b>TWO-LANE, TWO-WAY, WORK WITHIN          THE TRAVEL WAY - SIGNAL CONTROL</b>	INDEX NO. <b>606</b>	SHEET NO. <b>3 of 4</b>
---------------------------	----------	--------------	---	--	-------------------------	----------------------------

6/16/2015 10:47:52 AM



MOMENTARY ROADWAY CLOSURE • HAUL ROUTE CROSSING

LAST REVISION 07/01/15	DESCRIPTION:
---------------------------	--------------



TWO-LANE, TWO-WAY, WORK WITHIN THE TRAVEL WAY - SIGNAL CONTROL

INDEX NO.  
606

SHEET NO.  
4 of 4