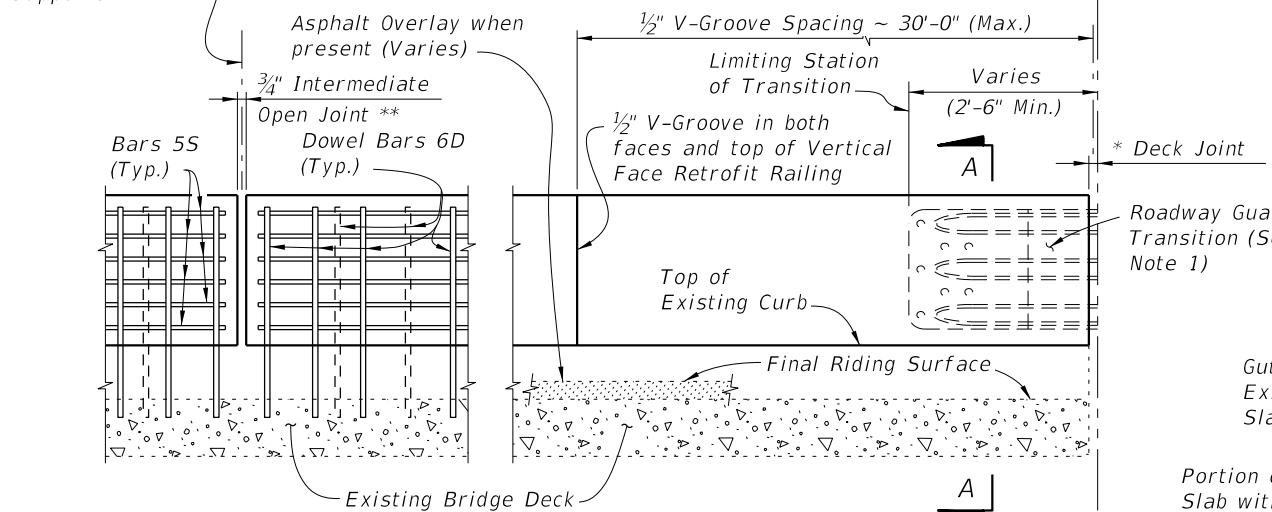


PARTIAL PLAN OF RAILING

Bars 6D spacing at Railing Joints (Typ. on bridge except as noted for skewed deck joints)

Superstructure Supports



PARTIAL ELEVATION OF INSIDE FACE OF RAILING (Existing Traffic Railing, Expansion Dowel Assemblies & Bars 4C not shown for clarity)

TYPICAL TREATMENT OF RAILING ALONG BRIDGE

NOTES:

1. On approach end provide a Roadway Guardrail Transition, Index No. 402 (as shown) or other site specific treatment. See Roadway Plans for limiting station of Roadway Guardrail Transition or other site specific treatment. If limiting station of Roadway Guardrail Transition is on the bridge, attach Thrie-Beam Terminal Connector to railing as shown above. If limiting station of Roadway Guardrail Transition is along the Wing Wall, see Schemes 2, 3, 4 or 5, Sheets 3 and 4. On skewed bridges, if the skew along the deck joint extends across the width of the railing, the 2'-6" minimum dimension shall apply to both the front and back face of the railing. For treatment of trailing end see Roadway Plans. If vertical face retrofit extends beyond bridge and approach slab ends, see Index No. 484 for treatment and Details.
2. Field cut Bars 5S and Dowel Bars 6D to maintain clearance within Vertical Face Retrofit Railing.
3. Where existing structure has been removed and not encased in new concrete; match adjoining areas and finish flat by grouting or grinding as required. Exposed existing reinforcing steel not encased in new concrete shall be burned off 1" below existing concrete and grouted over.

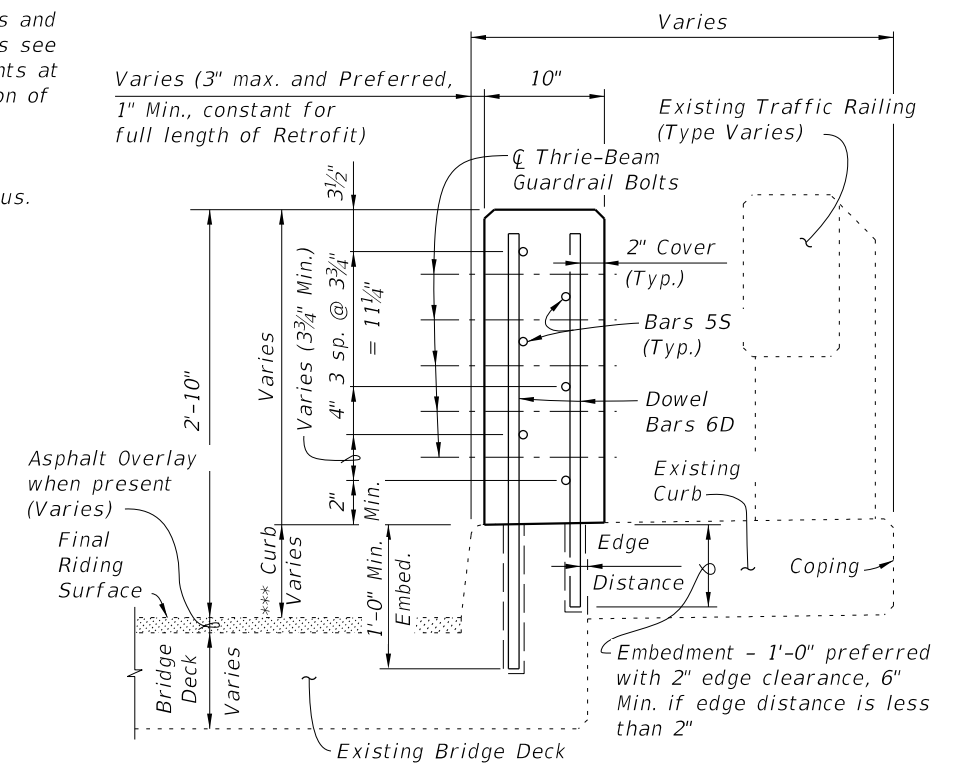
\* Non skewed deck joint shown, actual joint dimensions and orientation vary. For treatment at skewed deck joints see Skew Detail, Index No. 480. Provide open Railing Joints at Deck Expansion Joint locations matching the dimension of the Deck Joint.

\*\* Provide 3/4" Intermediate Open Joints at:  
(1) - Superstructure supports where slab is continuous.

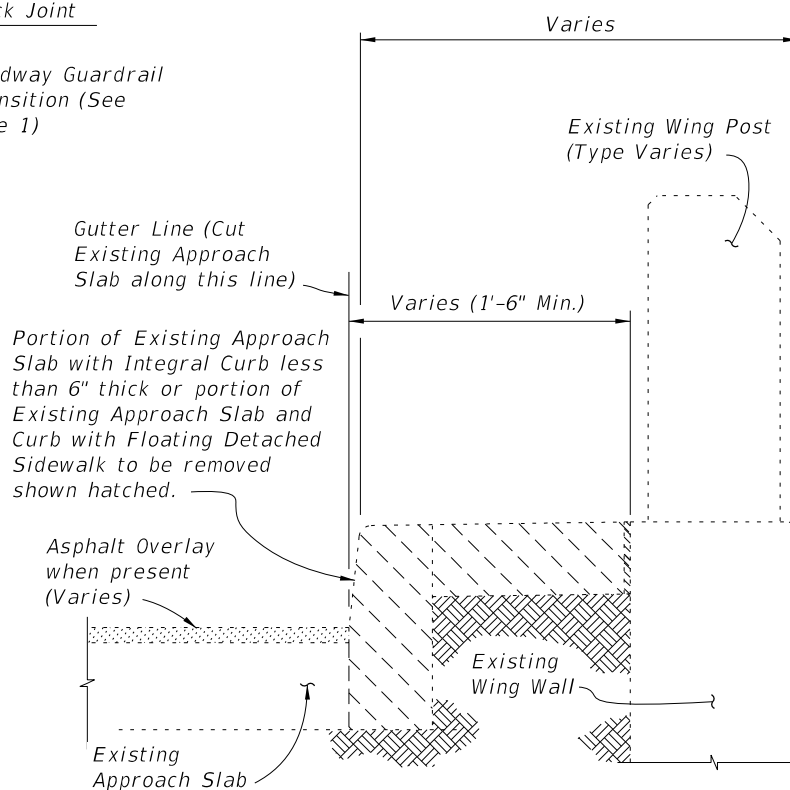
\*\*\* Curb heights vary from 5" Min. to 1'-2" Max.

CROSS REFERENCE:

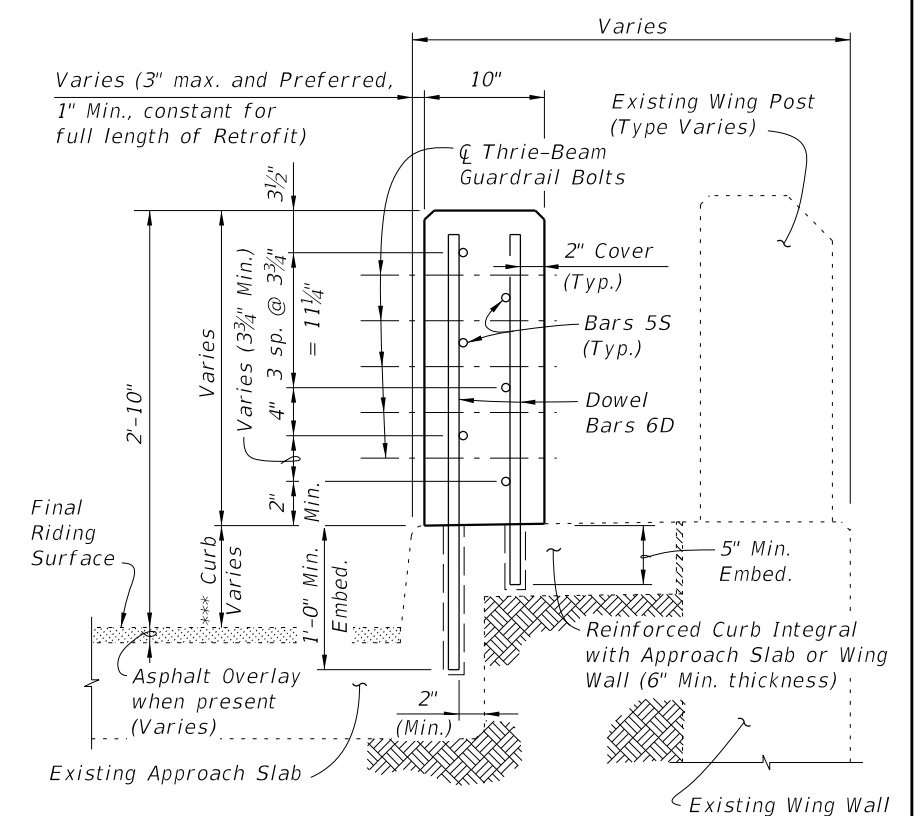
For General Notes, Estimated Quantities, Dowel Detail, Expansion Dowel Detail, Reinforcing Steel Notes & Bending Diagrams see Index No. 480.



SECTION A-A TYPICAL SECTION THRU RAILING ON BRIDGE DECK



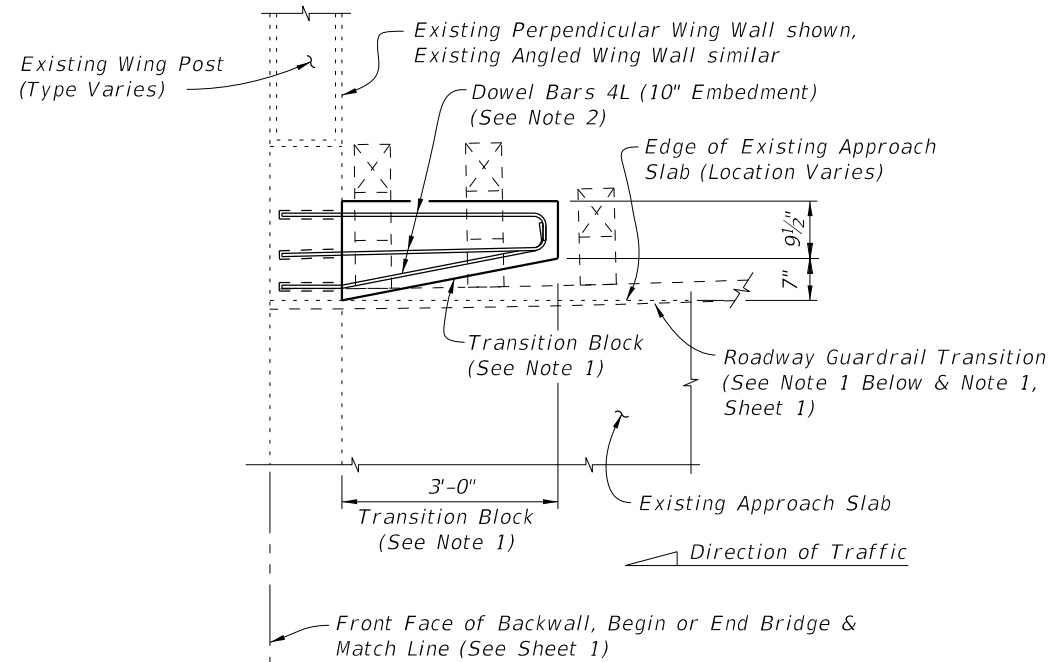
TYPICAL SECTION THRU EXISTING APPROACH SLAB AND END BENT WING WALL SHOWING LIMITS OF REMOVAL (SCHEMES 4 AND 5 ONLY)



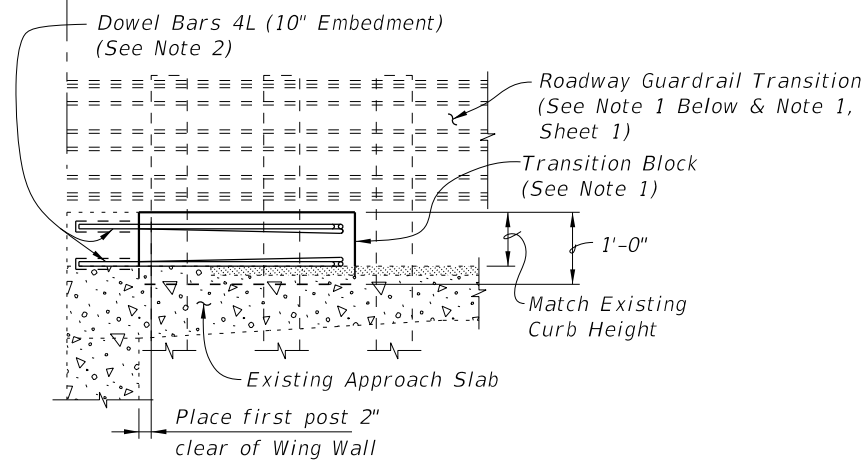
SECTION B-B TYPICAL SECTION THRU RAILING ALONG APPROACH SLAB (SCHEMES 2 AND 3 ONLY)

6/23/2015 4:37:58 PM

LAST REVISION	DESCRIPTION:
07/01/13	



**PARTIAL PLAN OF RAILING**

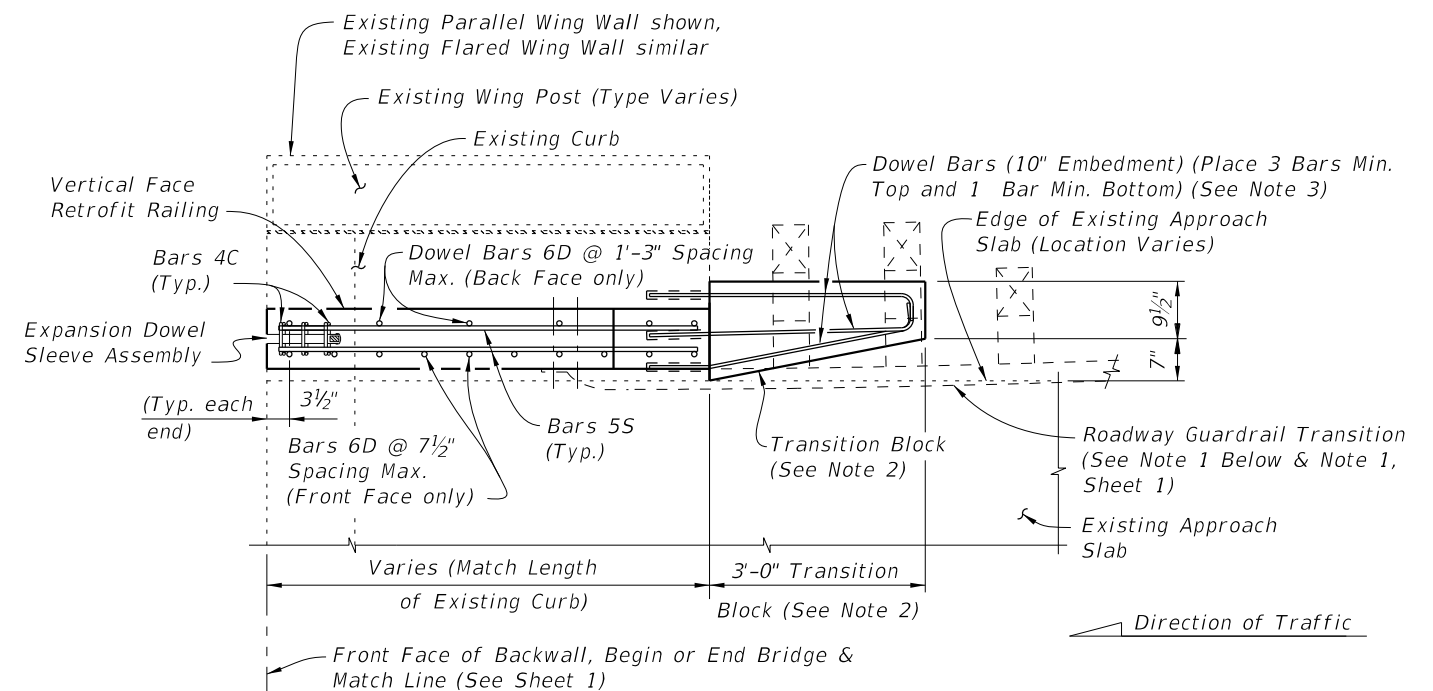


**PARTIAL ELEVATION OF INSIDE FACE OF GUARDRAIL**  
(Existing Wing Post not shown for clarity)

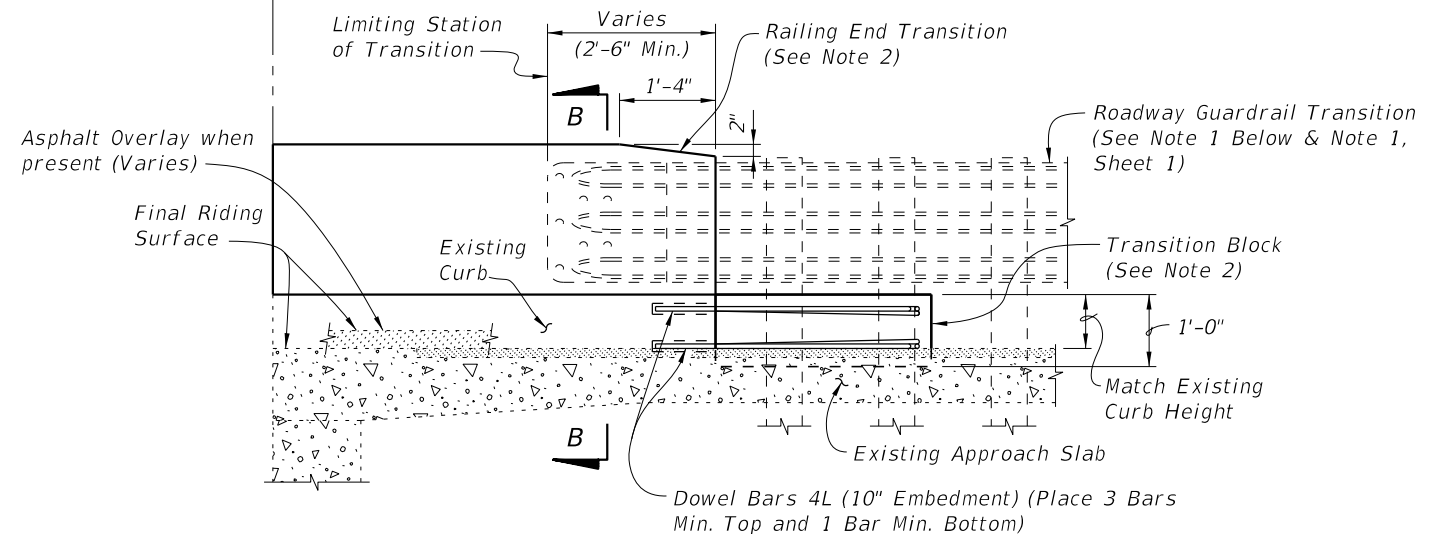
**SCHEME 1**  
**RAILING END TREATMENT FOR PERPENDICULAR OR ANGLED WING WALLS**

**SCHEME 1 NOTES:**

1. Provide Transition Block (as shown) or Curb if existing Approach Slab does not have a curb, see Roadway Plans. Shape and height of Transition Block or Curb shall match existing bridge curb. Railing End Transition and Transition Block may be omitted on trailing ends with no opposing traffic.
2. Field bend Dowel Bars 4L within Transition Block as required to maintain 2" top and side clearance and 3" bottom clearance.
3. If a Special Steel Guardrail Post is required for attachment to the top of a sloping Wing Wall, saw cut and remove a wedge shaped portion of the sloping Wing Wall as required to provide a level surface for post installation.



**PARTIAL PLAN OF RAILING**




**PARTIAL ELEVATION OF INSIDE FACE OF RAILING**  
(Existing Wing Post, Railing Reinforcing and Expansion Dowel Assemblies not shown for clarity)

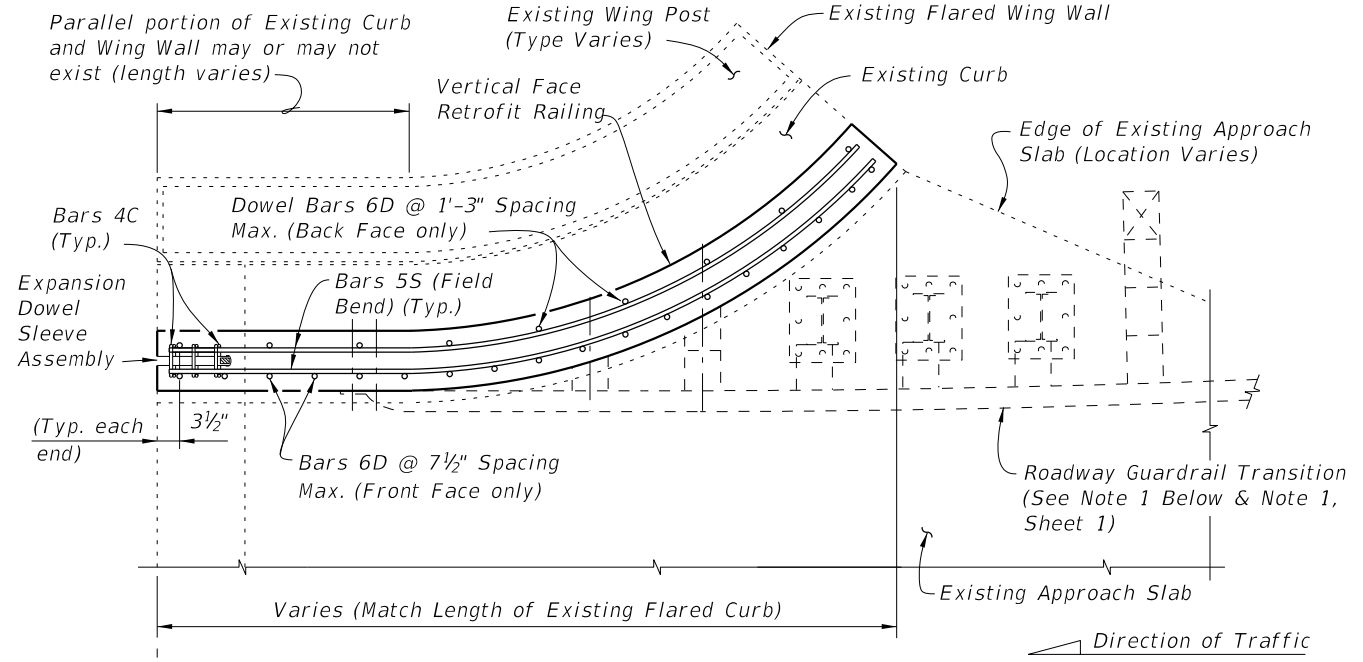
**SCHEME 2**  
**RAILING END TREATMENT FOR PARALLEL CURBS**

**SCHEME 2 NOTES:**

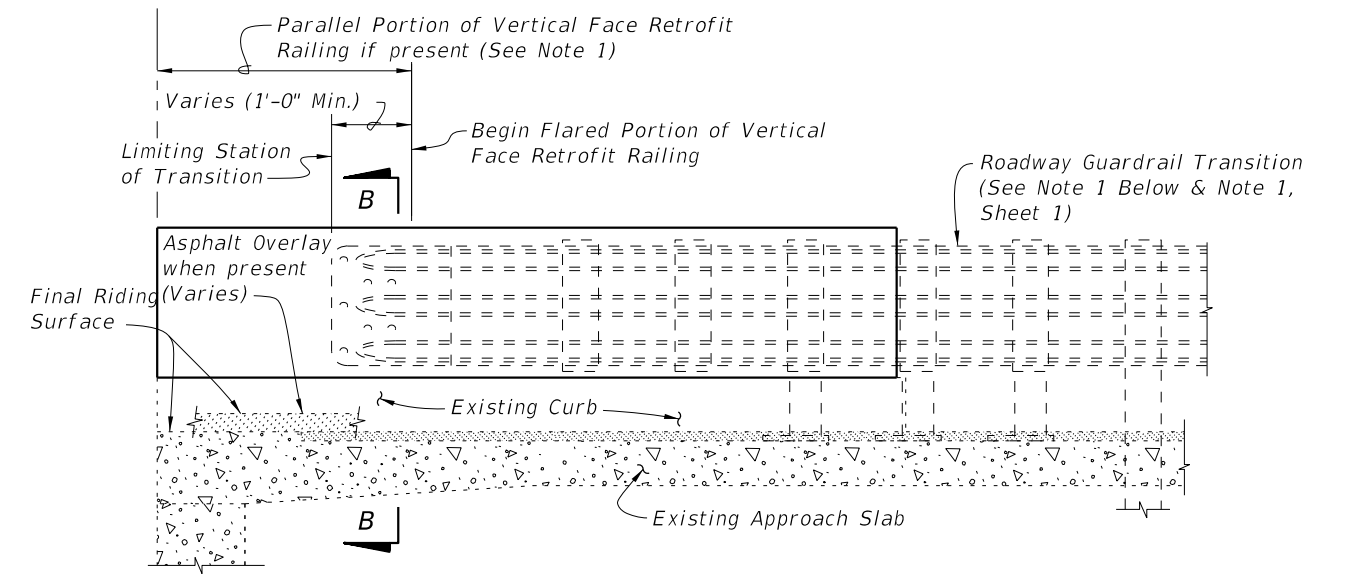
1. See Roadway Plans for limiting station of Roadway Guardrail Transition or other site specific treatment. If limiting station of Roadway Guardrail Transition is along the Wing Wall, attach Thrie-Beam Terminal Connector to railing as shown above. If limiting station of Roadway Guardrail Transition is on the bridge, see Sheet 1. On skewed bridges, if the skew along the deck joint extends across the width of the railing, the 2'-6" minimum dimension shall apply to both the front and back face of the railing.
2. Provide Transition Block (as shown) or Curb if existing Approach Slab Curb does not extend beyond end of existing End Bent Wing Wall, see Roadway Plans. Shape and height of Transition Block or Curb shall match existing bridge curb. Railing End Transition and Transition Block may be omitted on trailing ends with no opposing traffic.
3. Field bend Dowel Bars 4L within Transition Block as required to maintain 2" top and side clearance and 3" bottom clearance.

6/23/2015 4:37:59 PM

LAST REVISION 07/01/05	REVISION	DESCRIPTION:	 <b>2016</b> DESIGN STANDARDS	<b>TRAFFIC RAILING - (VERTICAL FACE RETROFIT)</b> WIDE CURB	INDEX NO. <b>482</b>	SHEET NO. <b>2 of 4</b>
---------------------------	----------	--------------	-----------------------------------------------------------------------------------------------------------------------	----------------------------------------------------------------	-------------------------	----------------------------



**PARTIAL PLAN OF RAILING**



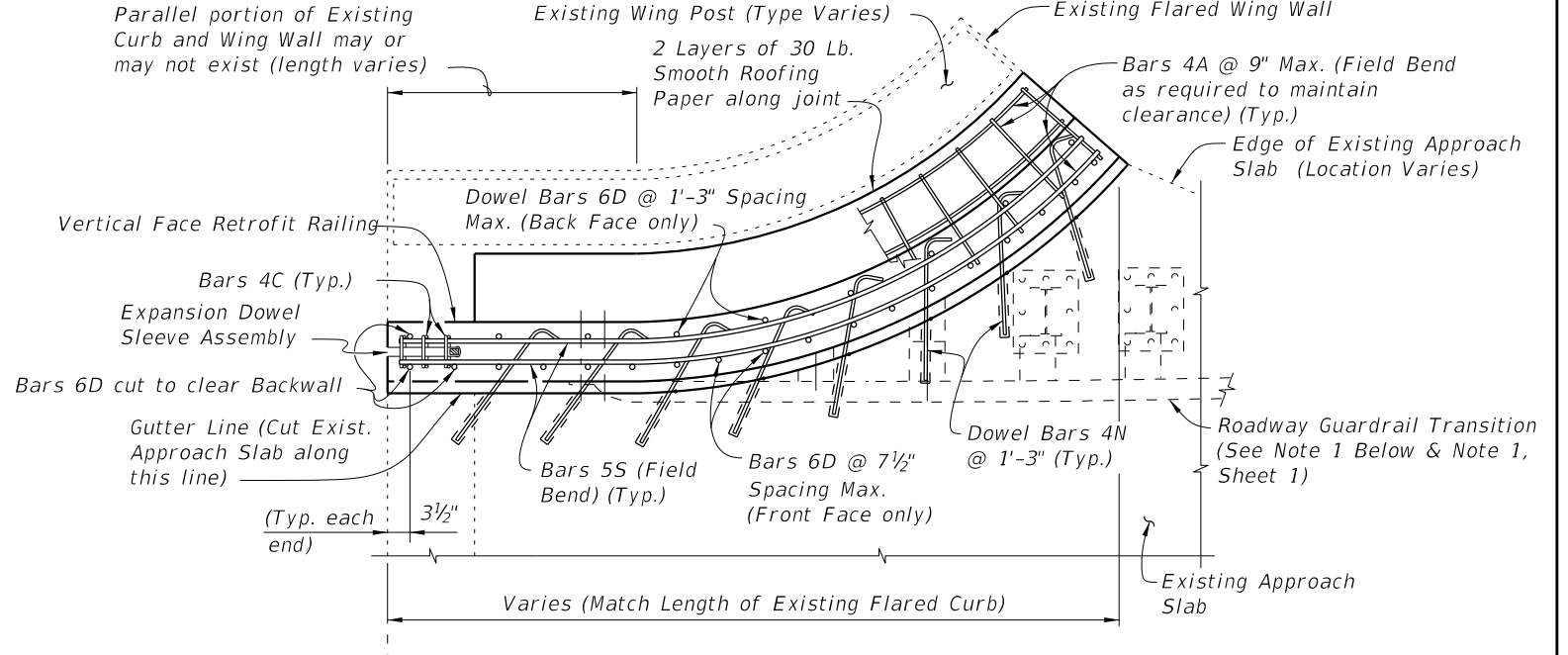
**PARTIAL ELEVATION OF INSIDE FACE OF RAILING**

(Existing Wing Post, Railing Reinforcing and Expansion Dowel Assemblies not shown for clarity)

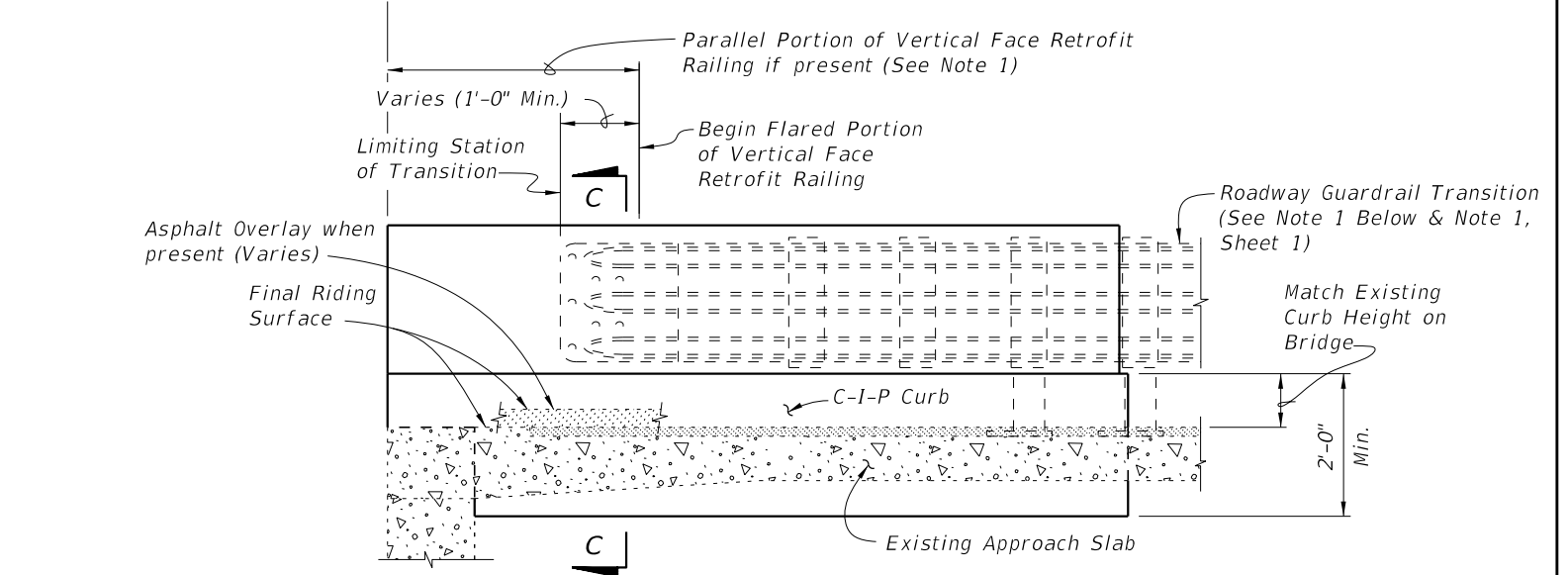
**SCHEME 3**  
**RAILING END TREATMENT FOR FLARED CURBS**

SCHEME 3 NOTE:

1. See Roadway Plans for limiting station of Roadway Guardrail Transition or other site specific treatment. If limiting station of Roadway Guardrail Transition is along the Wing Wall, attach Thrie-Beam Terminal Connector to railing as shown above. If limiting station of Roadway Guardrail Transition is on the bridge, see Sheet 1.



**PARTIAL PLAN OF RAILING**



**PARTIAL ELEVATION OF INSIDE FACE OF RAILING**

(Existing Wing Post, Railing Reinforcing and Expansion Dowel Assemblies not shown for clarity)

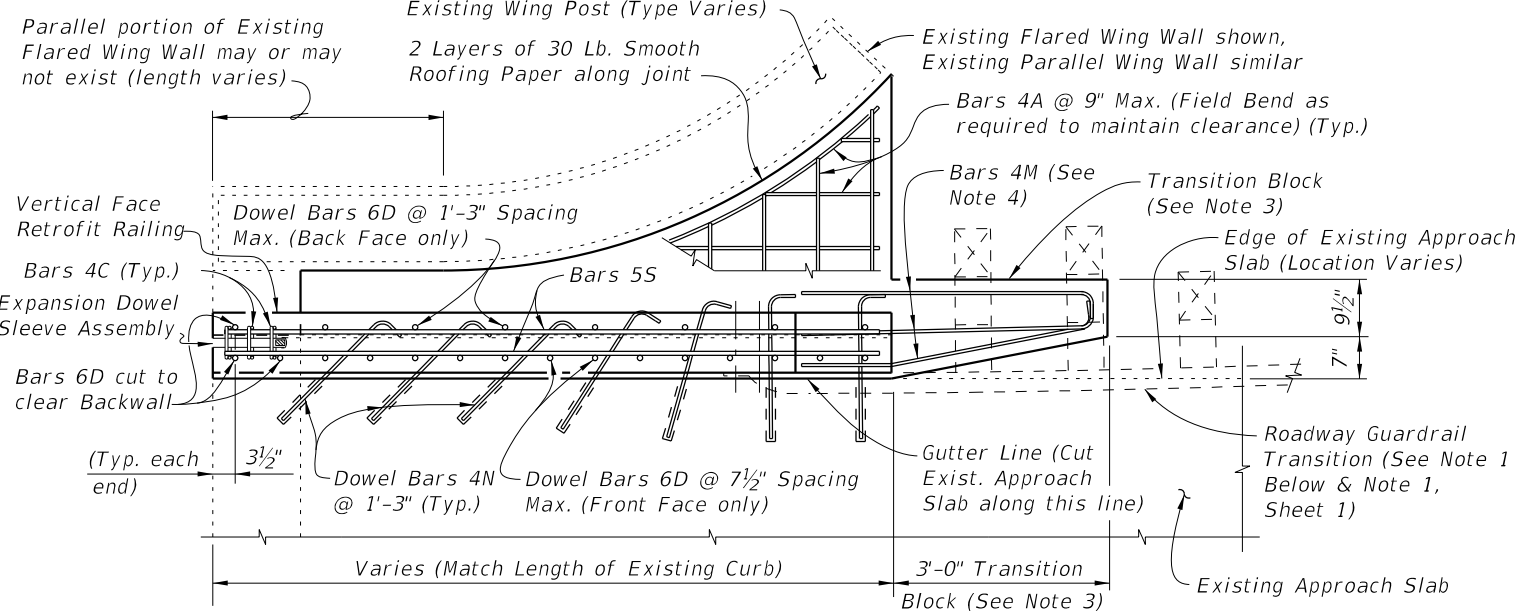
**SCHEME 4**  
**RAILING END TREATMENT FOR FLARED CURBS**

SCHEME 4 NOTES:

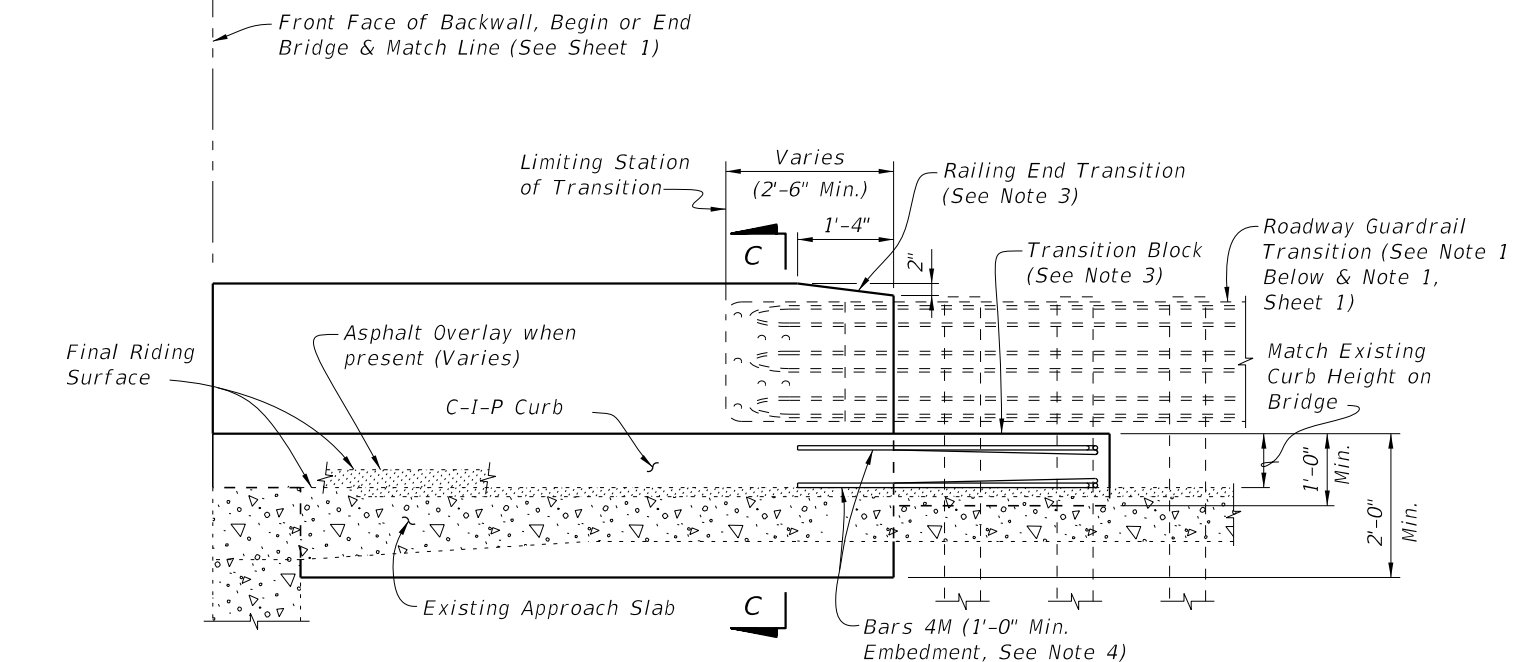
1. See Roadway Plans for limiting station of Roadway Guardrail Transition or other site specific treatment. If limiting station of Roadway Guardrail Transition is along the Wing Wall, attach Thrie-Beam Terminal Connector to railing as shown above. If limiting station of Roadway Guardrail Transition is on the bridge, see Sheet 1.
2. Dowel Bars 4N may be installed on a maximum angle of 45° to the cut edge of the Approach Slab as shown to facilitate drilling of holes and installation of bars.
3. At the Contractor's option, along the length of the Approach Slab curb that is to be replaced, Dowel Bars 6D may be cast in with the new section of curb as shown or they may be installed in drilled holes in the new section of curb using an Adhesive Bonding Material System with a 1'-0" minimum embedment.

6/23/2015 4:37:59 PM

LAST REVISION 07/01/05	REVISION	DESCRIPTION:	<b>2016</b> DESIGN STANDARDS	<b>TRAFFIC RAILING - (VERTICAL FACE RETROFIT)</b> WIDE CURB	INDEX NO. <b>482</b>	SHEET NO. <b>3 of 4</b>
---------------------------	----------	--------------	---------------------------------	----------------------------------------------------------------	-------------------------	----------------------------



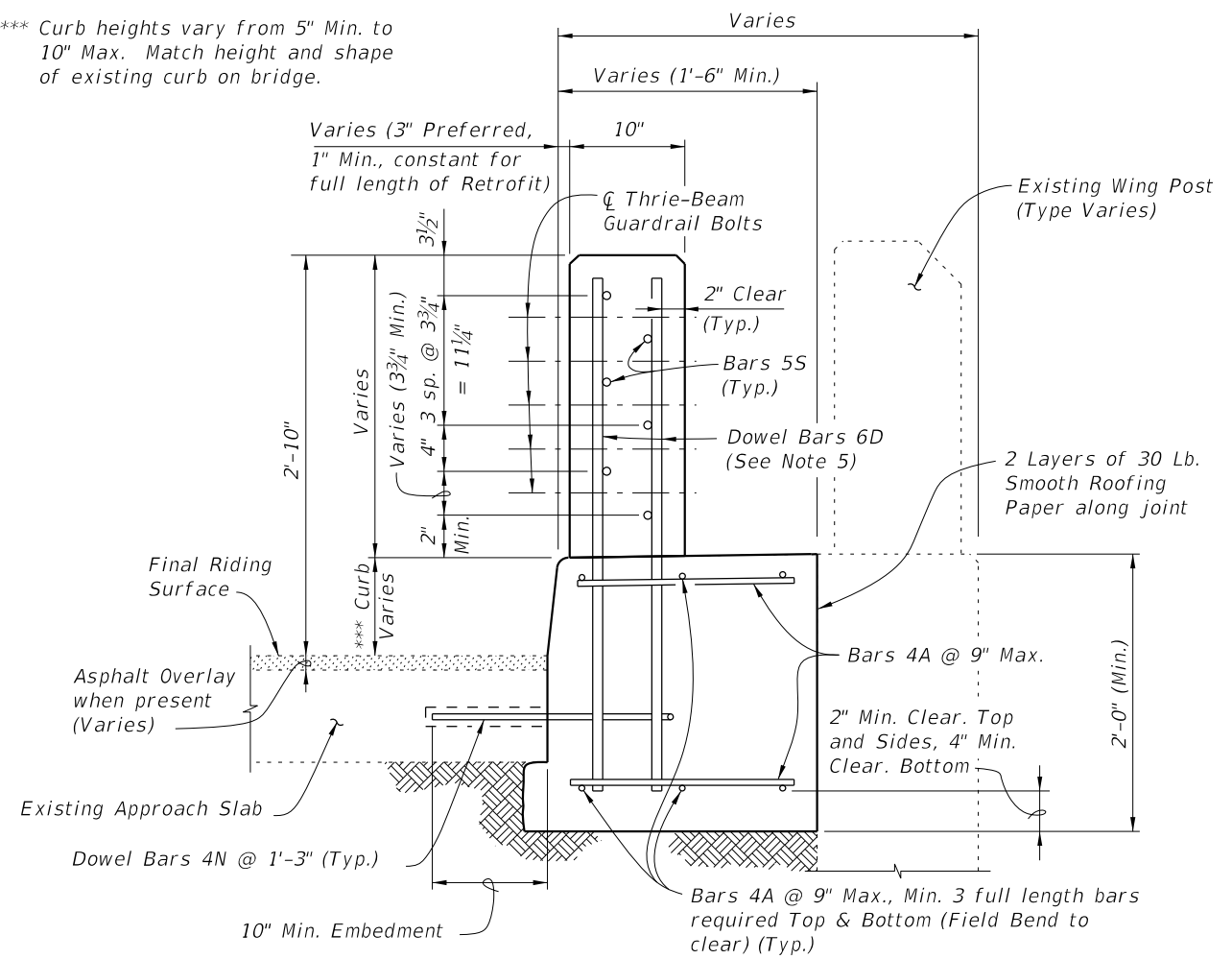
PARTIAL PLAN OF RAILING



PARTIAL ELEVATION OF INSIDE FACE OF RAILING  
(Existing Wing Post, Railing Reinforcing and Expansion Dowel Assemblies not shown for clarity)

**SCHEME 5**  
RAILING END TREATMENT FOR PARALLEL CURBS

\*\*\* Curb heights vary from 5" Min. to 10" Max. Match height and shape of existing curb on bridge.



SECTION C-C  
TYPICAL SECTION THRU RAILING ALONG APPROACH SLAB  
(SCHEME 4 SHOWN, SCHEME 5 SIMILAR)

SCHEME 5 NOTES:

1. See Roadway Plans for limiting station of Roadway Guardrail Transition or other site specific treatment. If limiting station of Roadway Guardrail Transition is along the Wing Wall, attach Thrie-Beam Terminal Connector to railing as shown above. If limiting station of Roadway Guardrail Transition is on the bridge, see Sheet 1.
2. Dowel Bars 4N may be installed on a maximum angle of 45° to the cut edge of the Approach Slab as shown to facilitate drilling of holes and installation of bars.
3. Provide Transition Block (as shown) or Curb if existing Approach Slab Curb does not extend beyond end of existing End Bent Wing Wall, see Roadway Plans. Shape and height of Transition Block or Curb shall match existing bridge curb. Railing End Transition and Transition Block may be omitted on trailing ends with no opposing traffic.
4. Field bend Dowel Bars 4M within Transition Block as required to maintain 2" top and side clearance and 3" bottom clearance.
5. At the Contractor's option, along the length of the Approach Slab curb that is to be replaced, Dowel Bars 6D may be cast in with the new section of curb as shown or they may be installed in drilled holes in the new section of curb using an Adhesive Bonding Material System with a 1'-0" minimum embedment.

6/23/2015 4:38:00 PM

LAST REVISION 07/01/05	REVISION	DESCRIPTION:	 2016 DESIGN STANDARDS	TRAFFIC RAILING - (VERTICAL FACE RETROFIT) WIDE CURB	INDEX NO. 482	SHEET NO. 4 of 4
---------------------------	----------	--------------	------------------------------	---------------------------------------------------------	------------------	---------------------