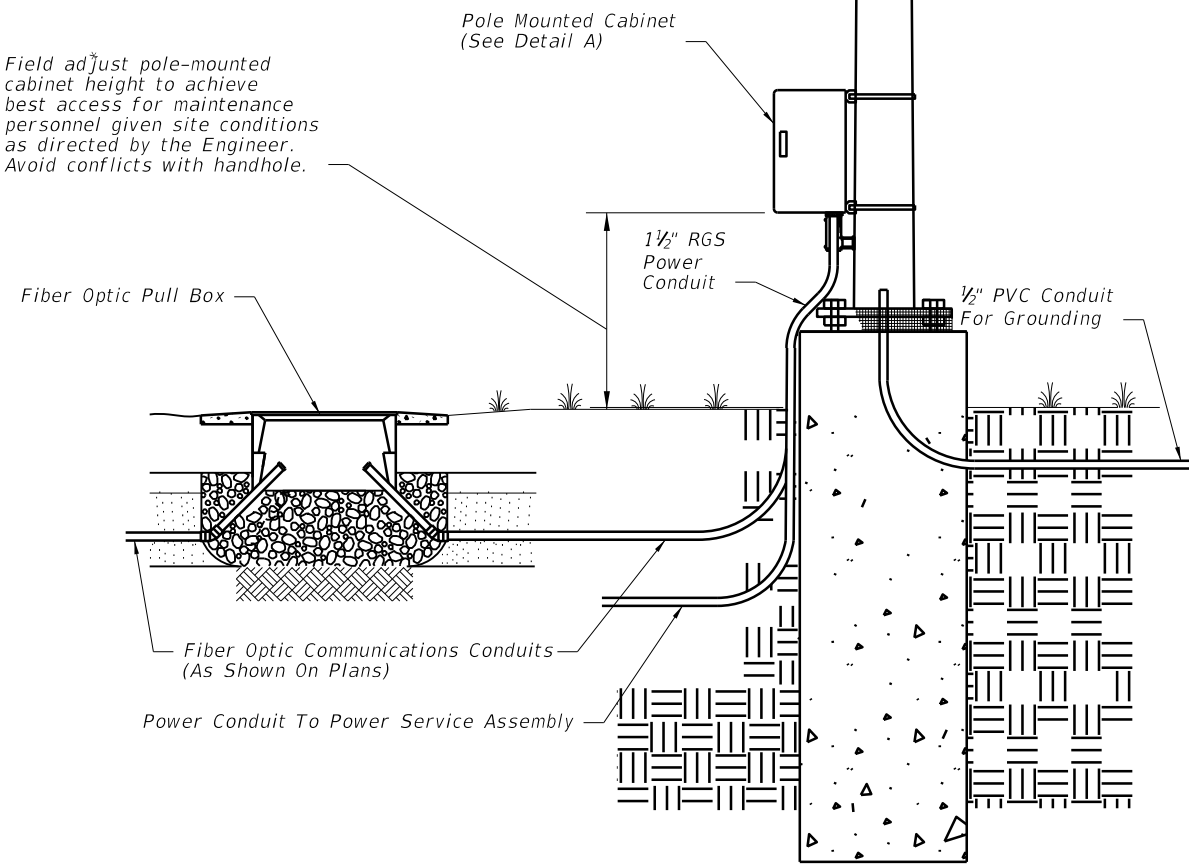
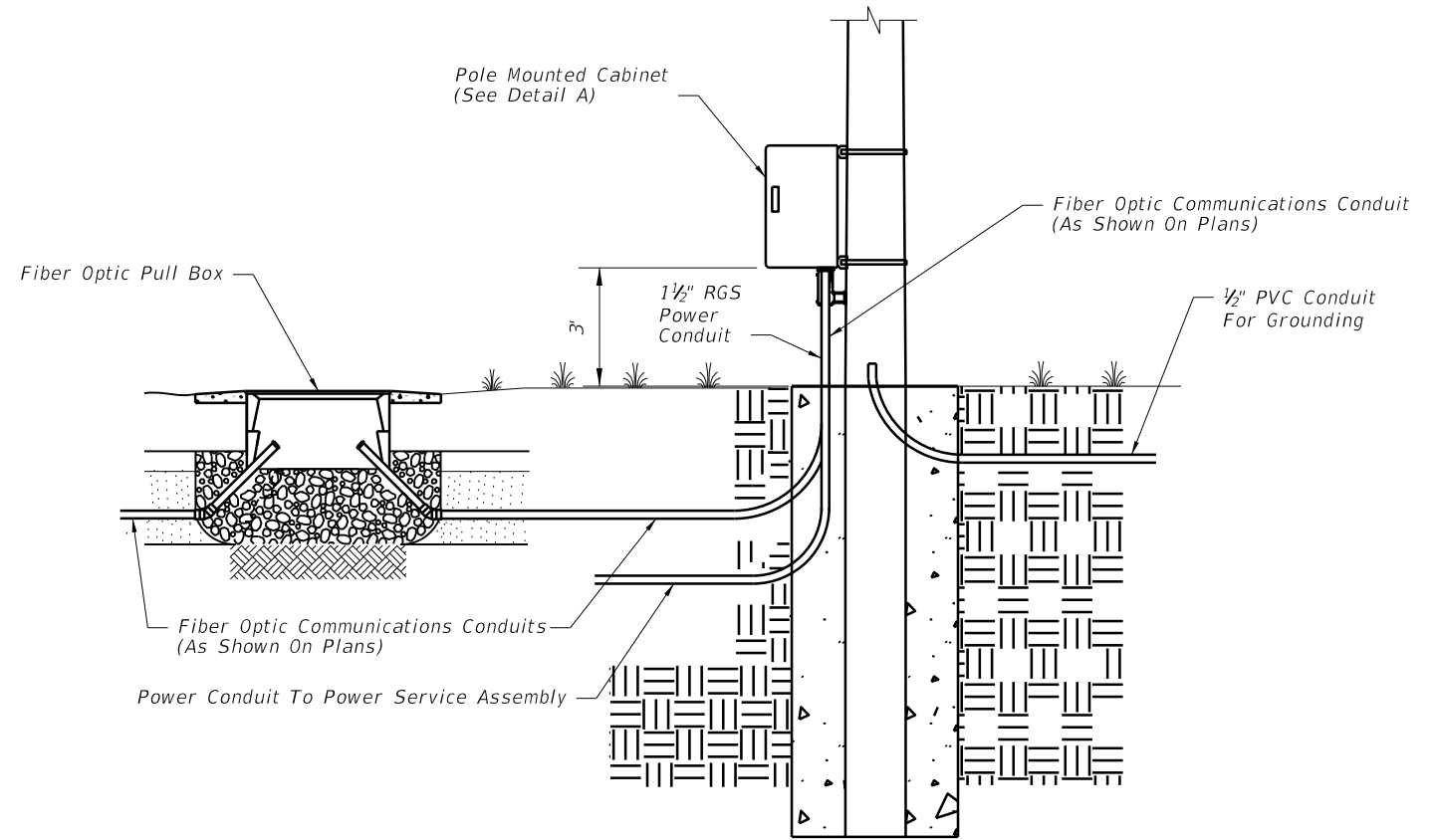


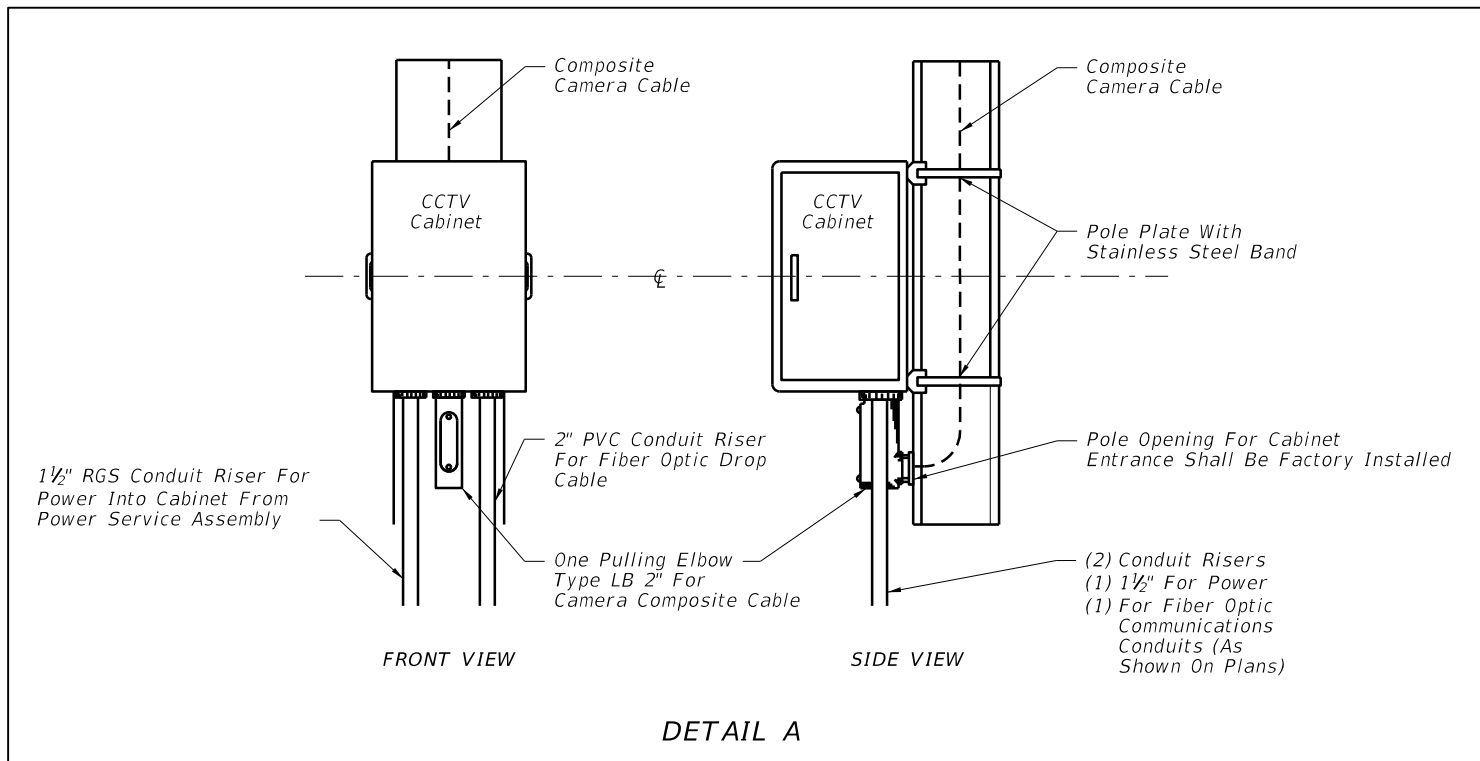
Field adjust pole-mounted cabinet height to achieve best access for maintenance personnel given site conditions as directed by the Engineer. Avoid conflicts with handhole.



STEEL POLE



CONCRETE POLE



DETAIL A

**GENERAL NOTES:**

1. Contractor shall splice fiber optic cables in cabinet to preterminated patch panel.
2. Furnish and install TVSS protection on all cabling in cabinet.
3. Furnish and install secondary TVSS protection on outlets for equipment in cabinet.
4. Sizes and types of conduits and innerducts for network communications between the pull box and cabinet are stated in the contract documents.
5. Ensure that equipment cabinet is bonded to CCTV pole grounding system.
6. All network communications conduits and ducts shall be sealed with approved waterproof duct plugs and seals.
7. Pole mounted cabinets shall be mounted with hinges next to the pole.

C:\projects\standards\18108-01.dgn 6/24/2013 7:36:38 PM sm970re

LAST REVISION	07/01/07
---------------	----------

DESCRIPTION:	
--------------	--



POLE MOUNTED CCTV CABINET	
---------------------------	--

INDEX NO.	18108
-----------	-------

SHEET NO.	1 of 1
-----------	--------