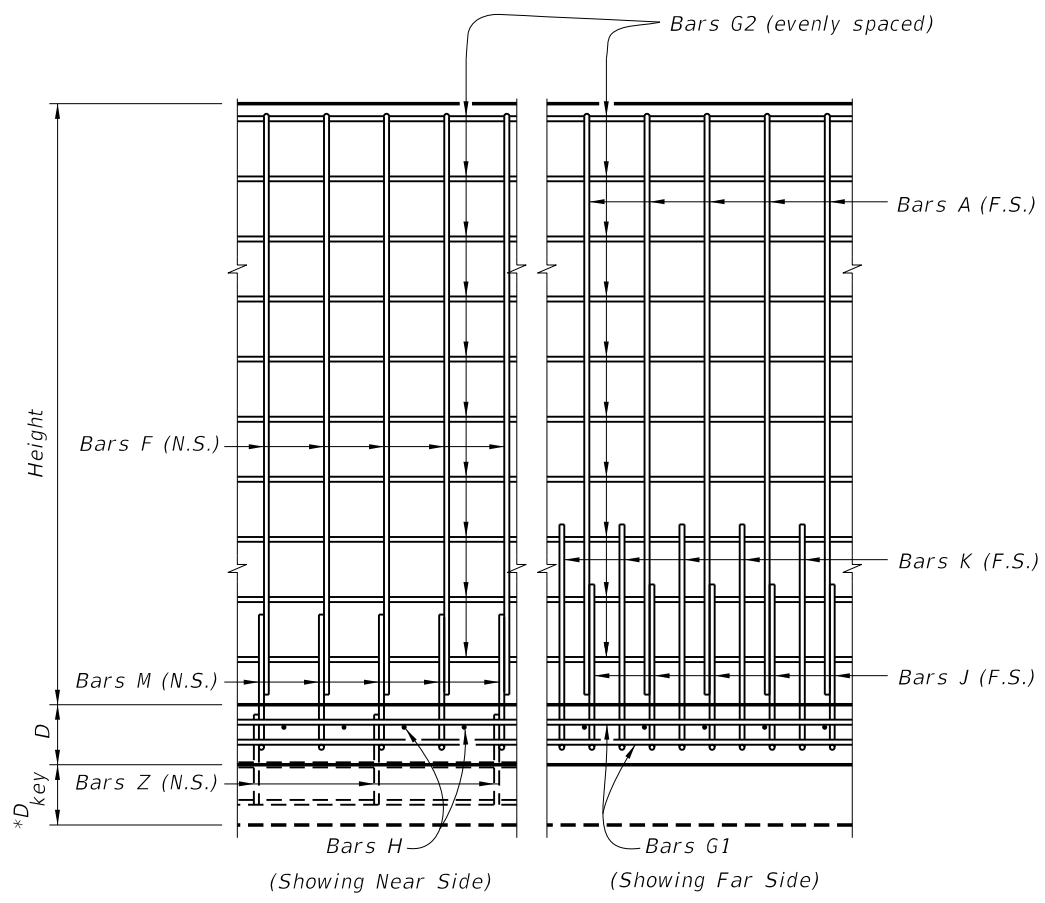


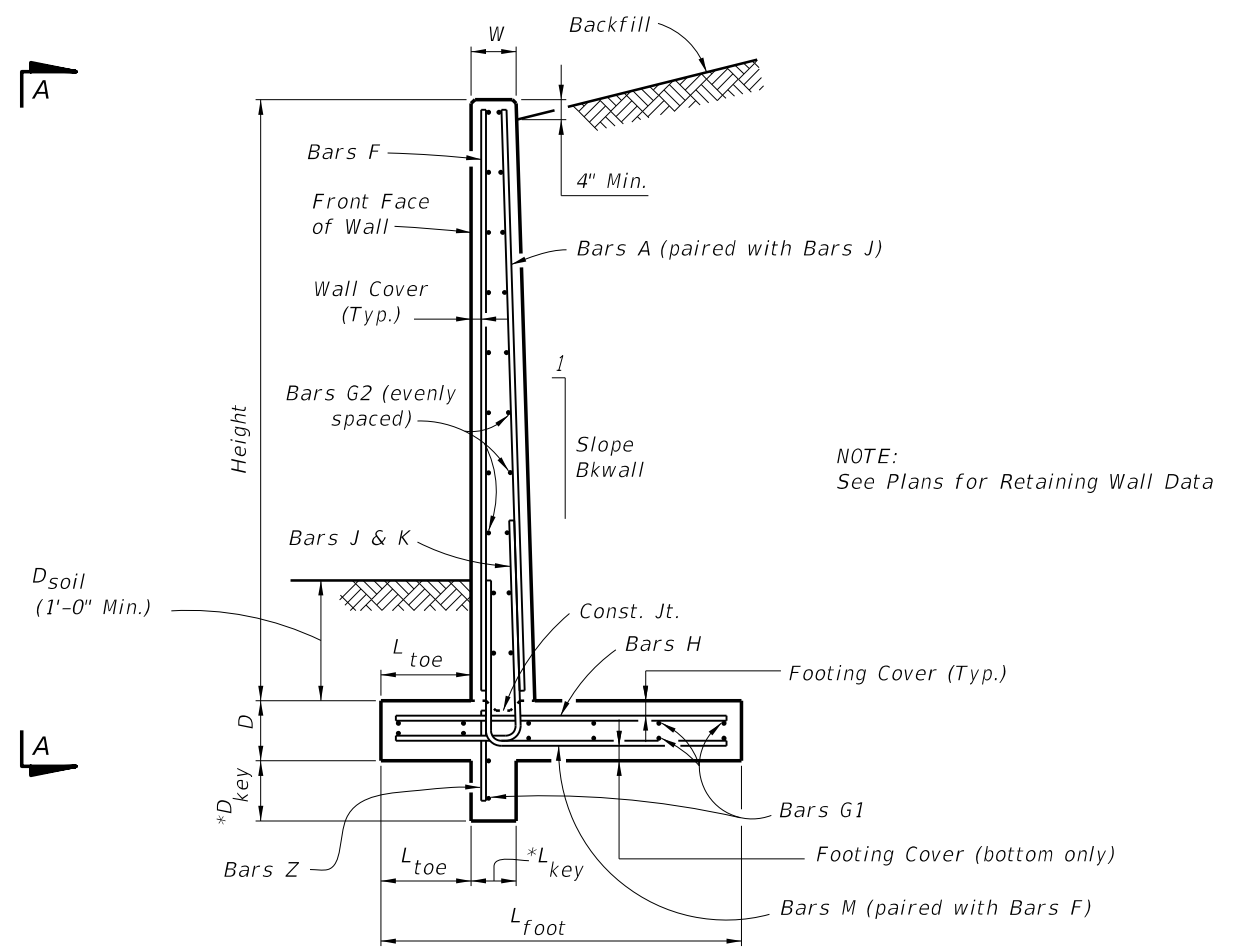
C:\projects\standards\structures\current\ready\4release\2014B00K\06010-1of2.dgn 6/24/2013 6:56:50 PM sm970re



VIEW A-A
(Shear key shown dashed)

NOTES

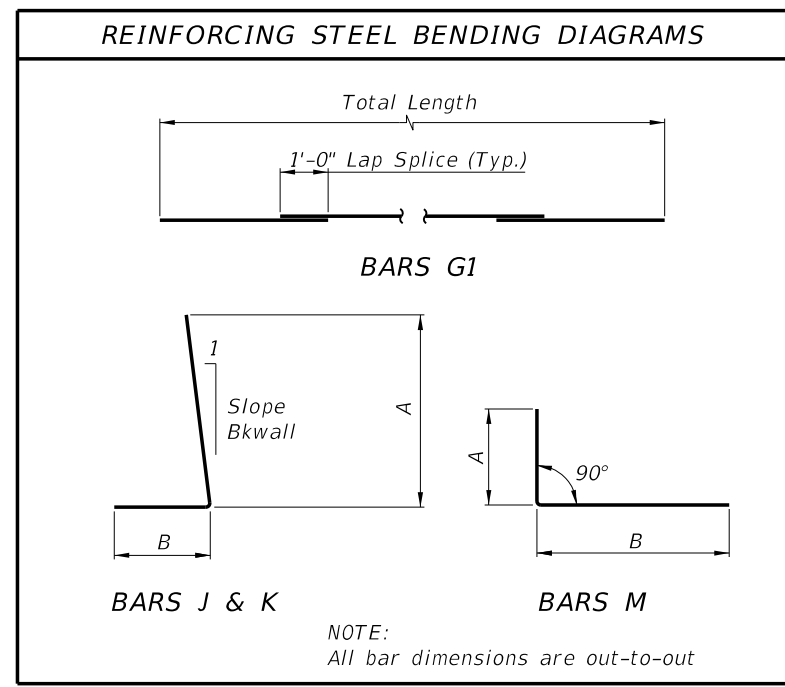
- DESIGN SPECIFICATIONS:**
Design according to FDOT Structures Manual (current edition).
- TRAFFIC RAILINGS OR PARAPETS:**
If there is a Traffic Railing or Parapet on the wall, align Wall Joints with V-Grooves, and Wall Expansion Joints with Barrier Open Joints.
- FOUNDATION:** Prepare the soil below the footing in accordance with the requirements for spread footings in Specification Section 455.
- PAYMENT:**
All Retaining Wall costs, including all miscellaneous costs, shall be paid for at the unit contract price for either Class II, III or IV Concrete (Retaining Walls) (CY) and Reinforcing Steel (Retaining Walls) (lbs.). Retaining Wall quantities shall not include concrete nor reinforcing steel for Traffic Railing, Parapet or Junction Slab.



NOTE:
See Plans for Retaining Wall Data

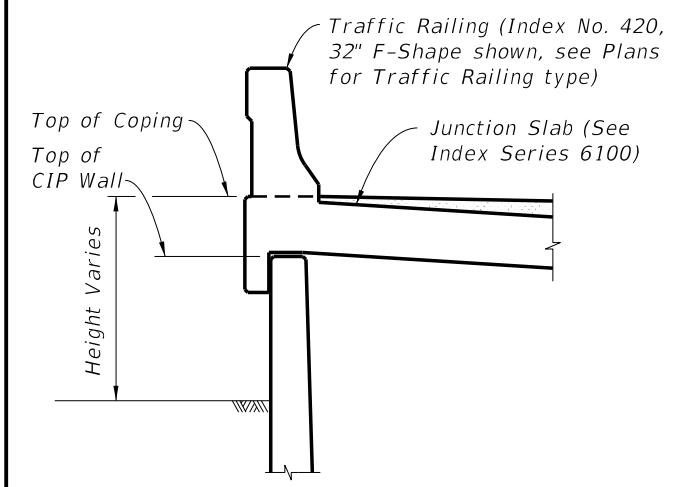
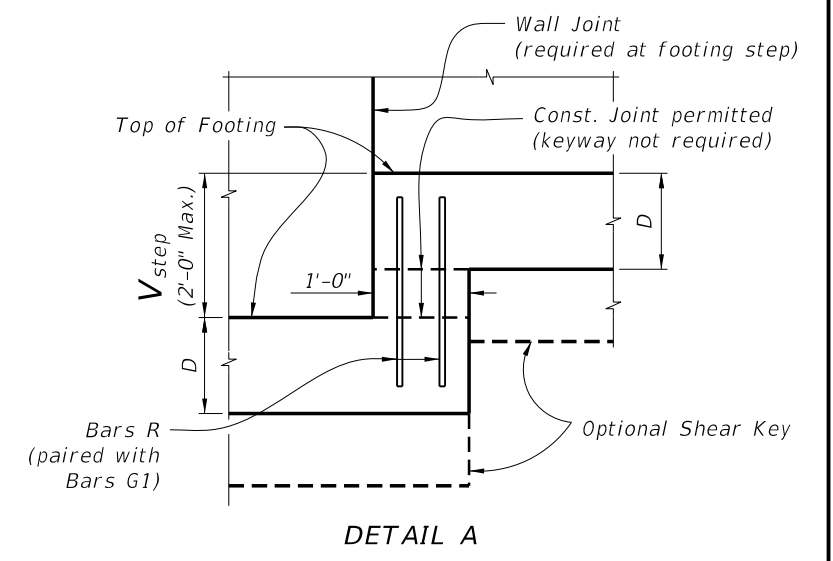
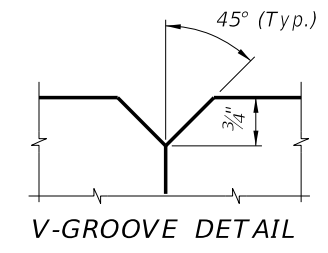
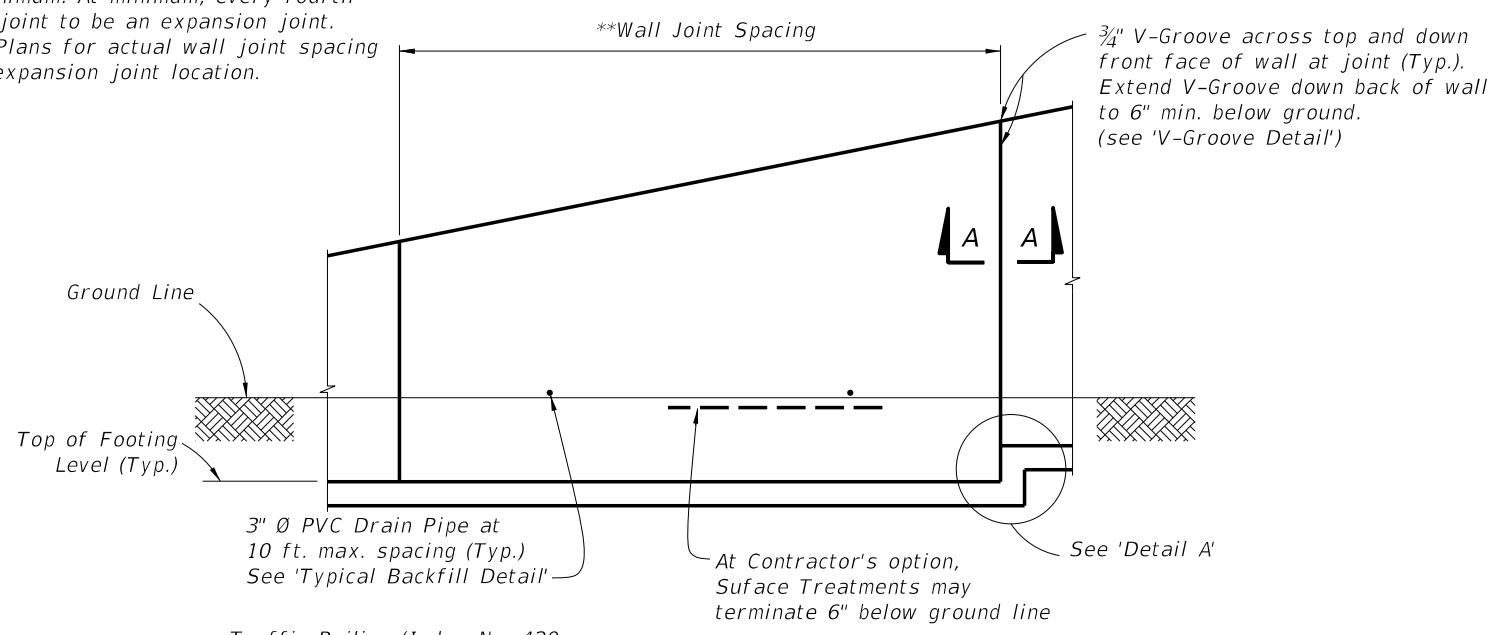
* Shear Key is required only when specified in the Plans.

TYPICAL SECTION

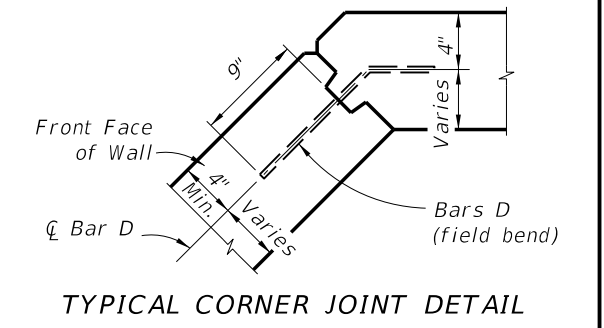
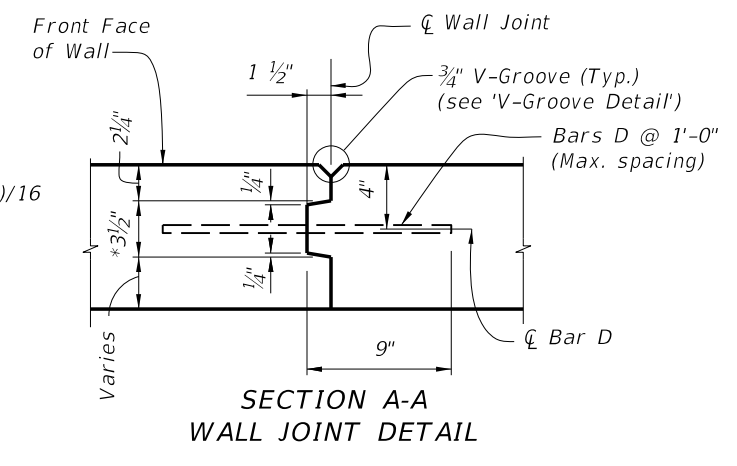
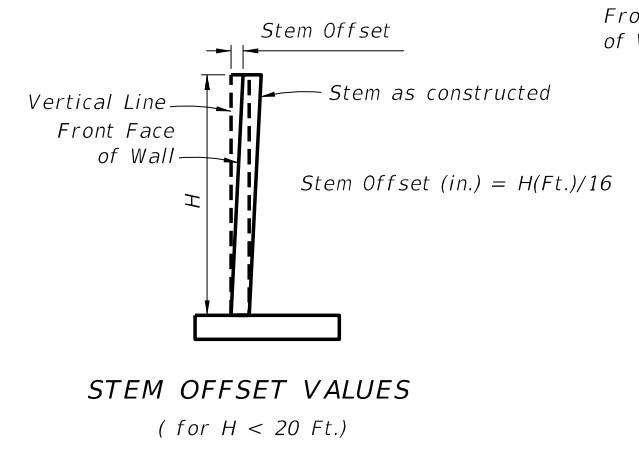


LAST REVISION 01/01/11	REVISION	DESCRIPTION:	<p style="text-align: center;">FDOT 2014 DESIGN STANDARDS</p>	<p style="font-size: 1.2em;">C-I-P CANTILEVER RETAINING WALL</p>	INDEX NO. 6010	SHEET NO. 1 of 2
---------------------------	----------	--------------	--	---	--------------------------	----------------------------

**Wall joint spacing 25 ft. maximum and 5' minimum. At minimum, every fourth wall joint to be an expansion joint. See Plans for actual wall joint spacing and expansion joint location.



FRONT ELEVATION

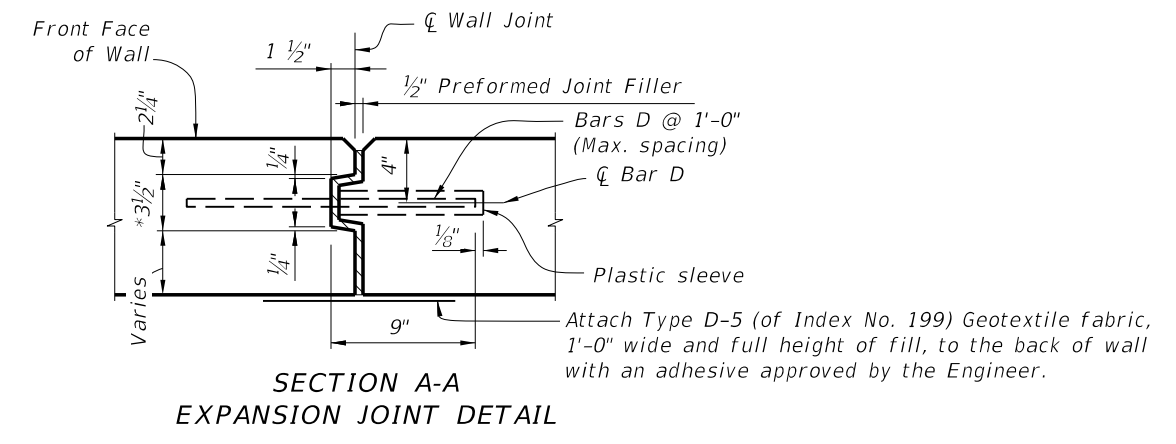
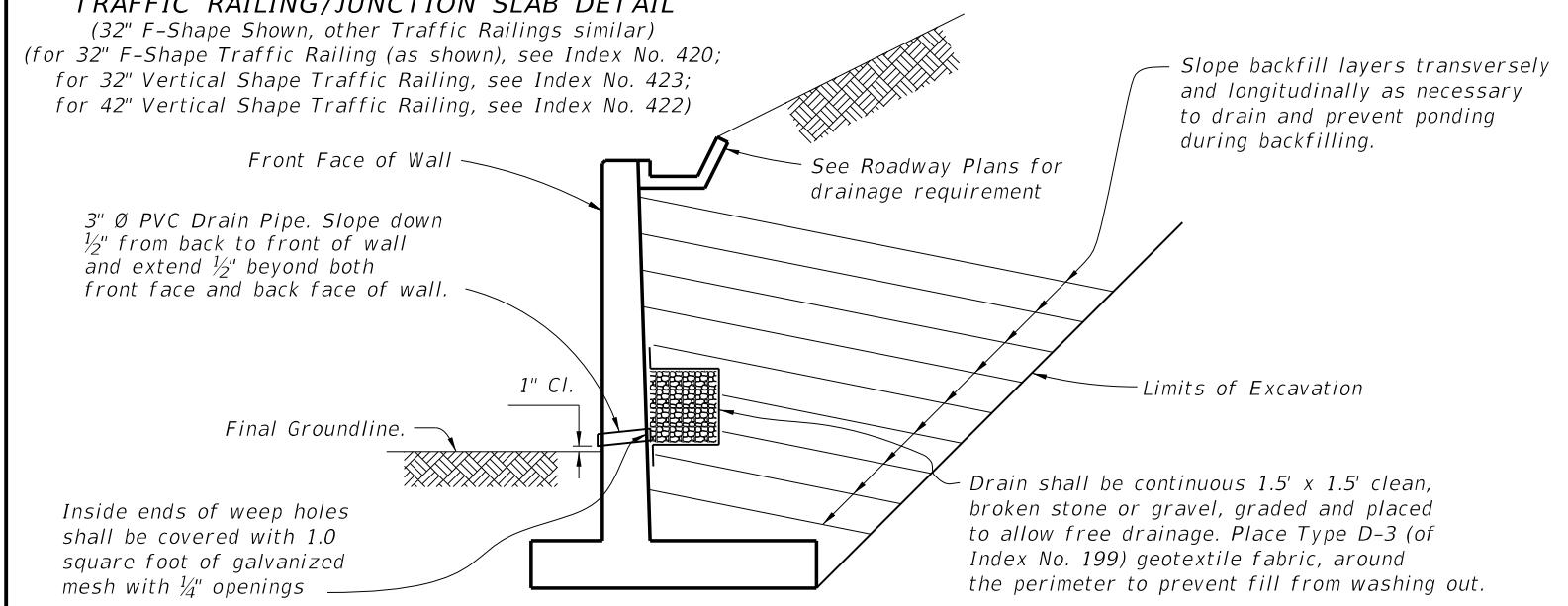


TRAFFIC RAILING/JUNCTION SLAB DETAIL
 (32" F-Shape Shown, other Traffic Railings similar)
 (for 32" F-Shape Traffic Railing (as shown), see Index No. 420;
 for 32" Vertical Shape Traffic Railing, see Index No. 423;
 for 42" Vertical Shape Traffic Railing, see Index No. 422)

STEM OFFSET VALUES
 (for H < 20 Ft.)

SECTION A-A WALL JOINT DETAIL

TYPICAL CORNER JOINT DETAIL

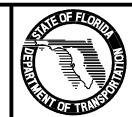


* Key to stop at top of footing and 6" from top of wall. Joint across footing and top of wall to be a straight line.

TYPICAL BACKFILL DETAIL

SECTION A-A EXPANSION JOINT DETAIL

C:\projects\standards\structures\current\ready\4release\2014B00K\06010-2of2.dgn
 RD960DM
 9:27:11 AM
 7/1/2013

LAST REVISION 01/01/11	REVISION	DESCRIPTION:	 FDOT 2014 DESIGN STANDARDS	C-I-P CANTILEVER RETAINING WALL	INDEX NO. 6010	SHEET NO. 2 of 2
---------------------------	----------	--------------	--	--	--------------------------	----------------------------