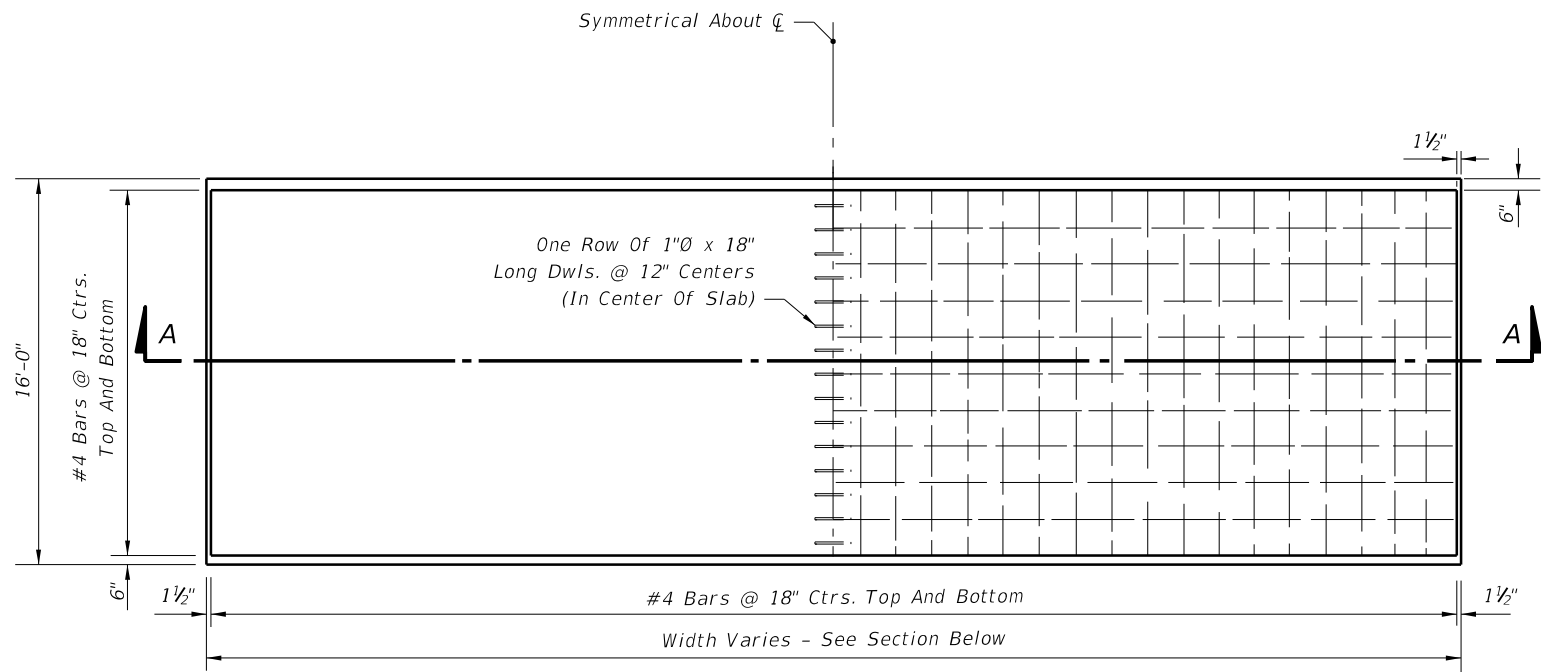
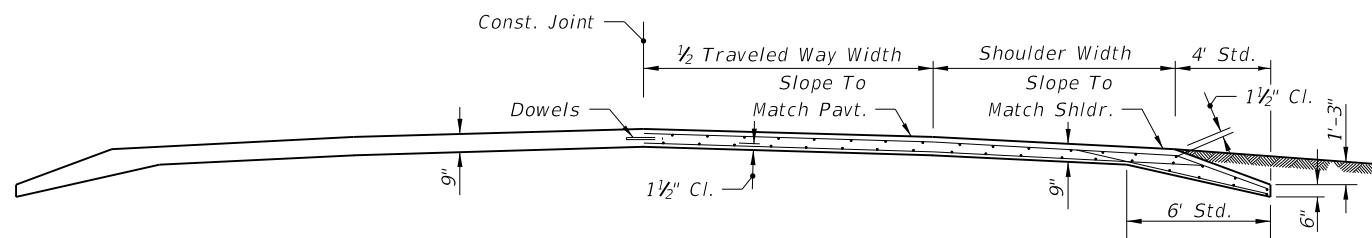


C:\projects\standards\roadway\00500-s\00535-01.dgn  
 sm970re  
 6:25:59 PM  
 6/24/2013



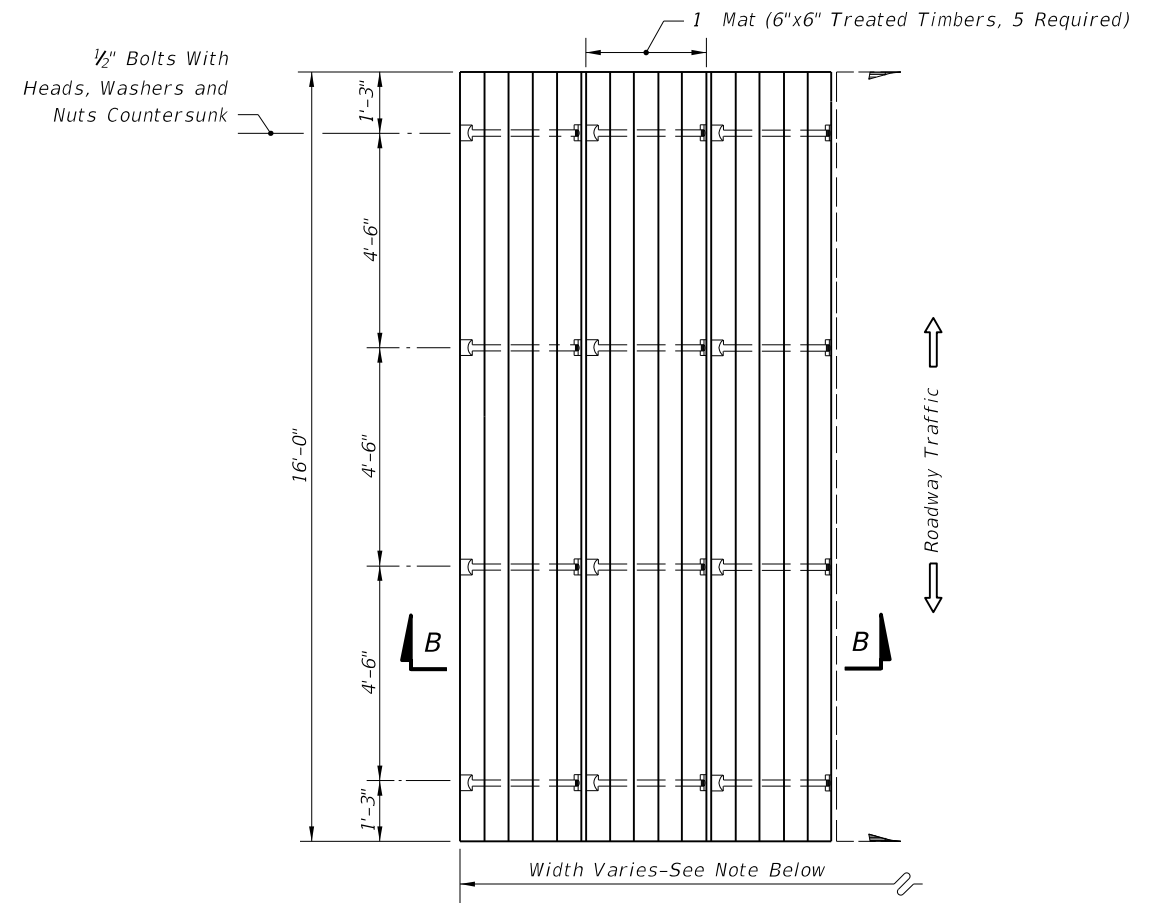
PLAN



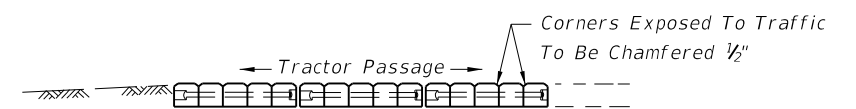
SECTION AA

Note: Class I concrete is to be used unless otherwise noted in plans or special provisions.

REINFORCED CONCRETE  
 TYPE A



PLAN



SECTION BB

Note: Tractor crossing to be constructed to match pavement cross slope.

The number of mats required will vary with the pavement width. A sufficient number of mats will be used so that the tractor crossing will extend a minimum of four feet (4') beyond roadway shoulders.

TREATED TIMBER  
 TYPE B

GENERAL NOTES

1. Tractor crossing shall be paid for under the contract unit price for Tractor Crossing, EA.

TRACTOR CROSSINGS

LAST REVISION 07/01/00	DESCRIPTION:	 <p>FDOT 2014                  DESIGN STANDARDS</p>	<p>TRACTOR CROSSINGS</p>	INDEX NO. 535	SHEET NO. 1 of 1
REVISION					