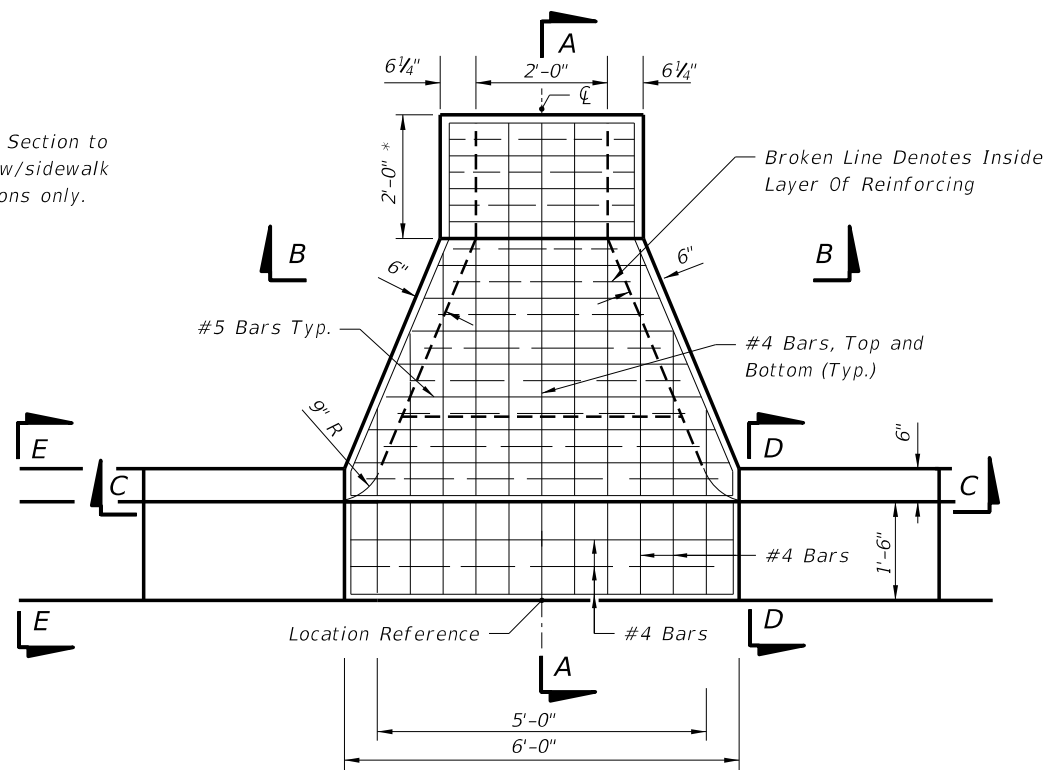


SECTION AA

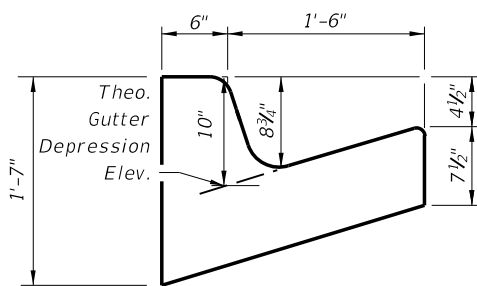
* Sloped Section to be used w/sidewalk applications only.



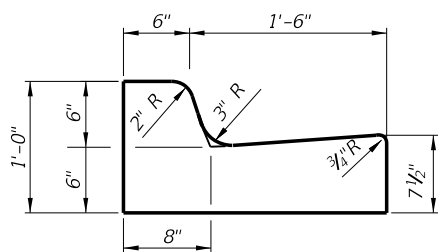
TOP VIEW

GENERAL NOTES

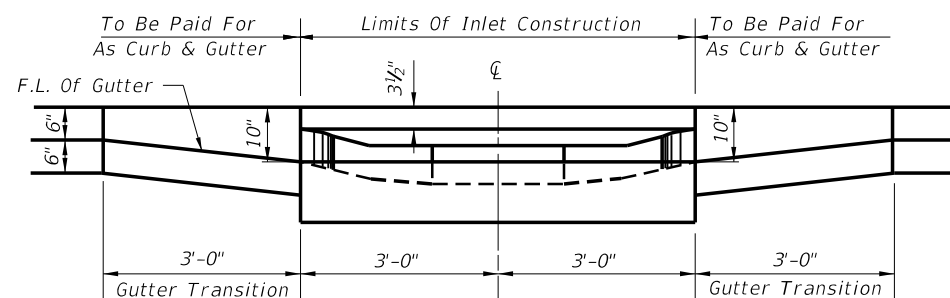
1. The finished grade and slope of the inlet top are to conform with the finished cross slope and grade of the proposed sidewalk and/or border.
2. When inlets are to be constructed on a curve, refer to the plans to determine the radius and, where necessary, modify the inlet details accordingly. Bend steel when necessary.
3. All steel shall have 1 1/4" minimum cover unless otherwise shown. Inlets can be either cast-in-place or precast concrete. Chamfer all exposed edges 3/4".
4. All reinforcement is ASTM A615/A615M Grade 60 steel, either smooth or deformed. Equivalent area grade 40 steel or 65 ksi welded wire fabric may be substituted.
5. Inlets to be paid for under the contract unit price for Inlets (Closed Flume) EA.



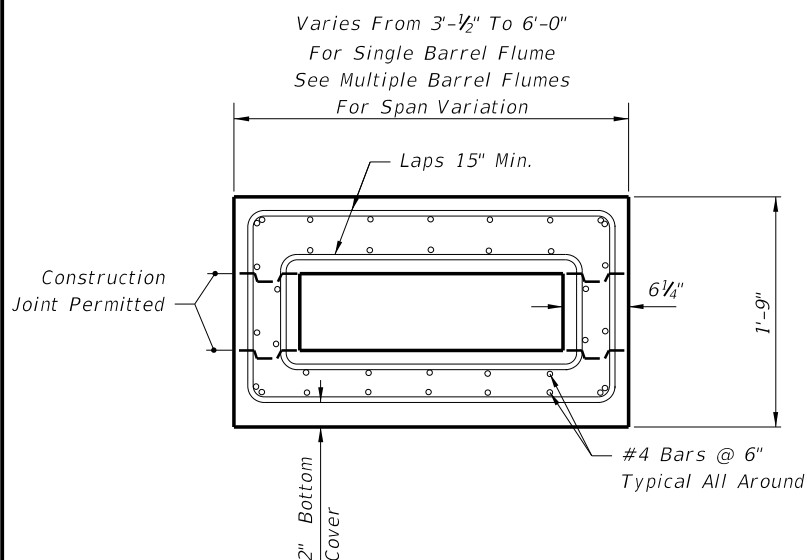
SECTION DD



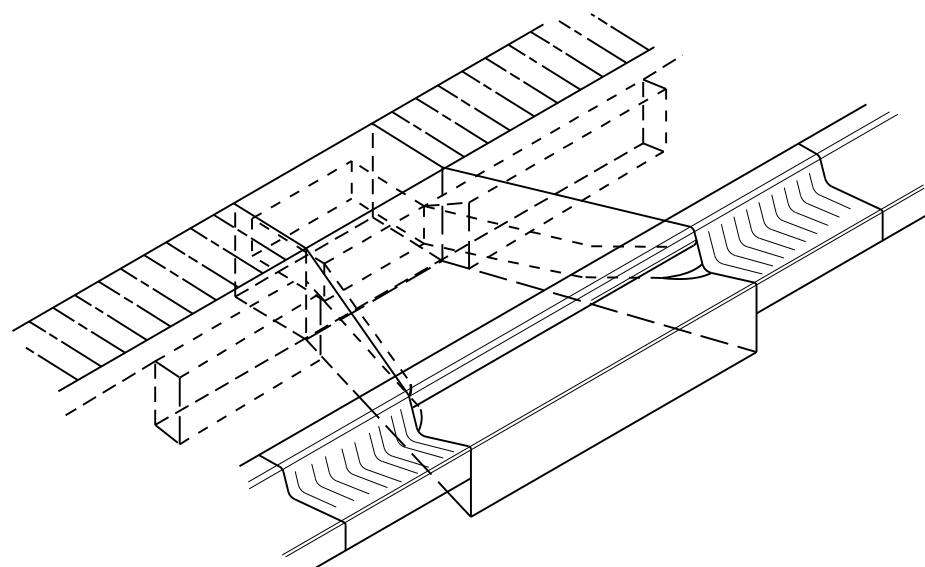
Curb And Gutter Type F SECTION EE



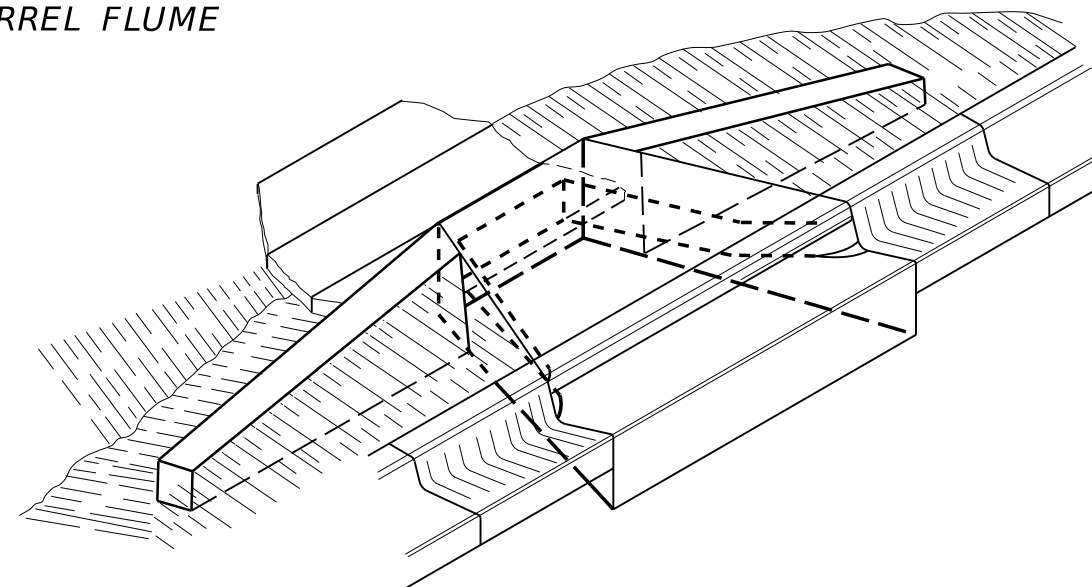
SECTION CC SINGLE BARREL FLUME



SECTION BB




SINGLE BARREL FLUME DEPICTED
FLUME W/SIDEWALK INLET (CLOSED FLUME) TYPE I

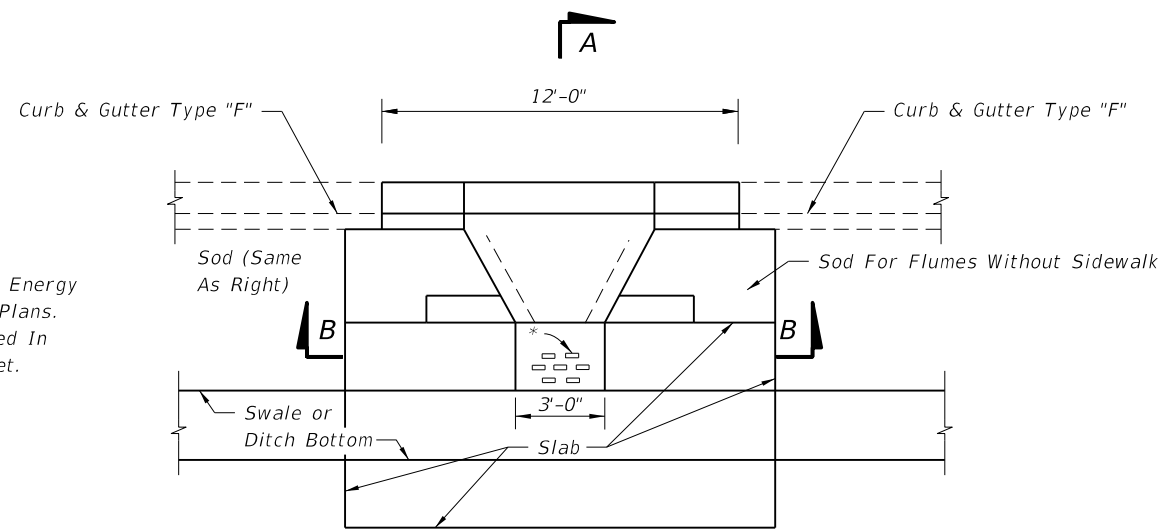


SINGLE BARREL FLUME DEPICTED
FLUME W/O SIDEWALK INLET (CLOSED FLUME) TYPE II

C:\projects\standards\roadway\02200-s\02216-01.dgn sm970re 4:39:09 PM 6/24/2013

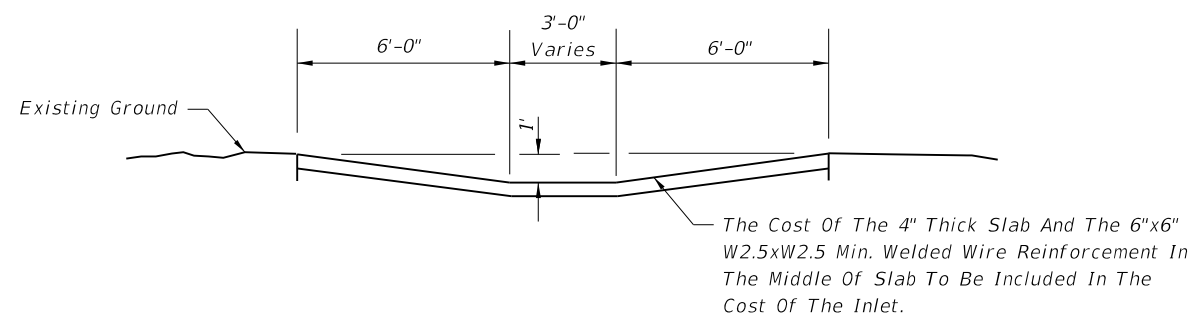
LAST REVISION 07/01/13	REVISION	DESCRIPTION:	 FDOT 2014 DESIGN STANDARDS	CLOSED FLUME INLET	INDEX NO. 216	SHEET NO. 1 of 3
---------------------------	----------	--------------	---	---------------------------	------------------	---------------------

C:\projects\standards\roadway\02200-s\02216-02.dgn
sm970re
4:39:11 PM
6/24/2013

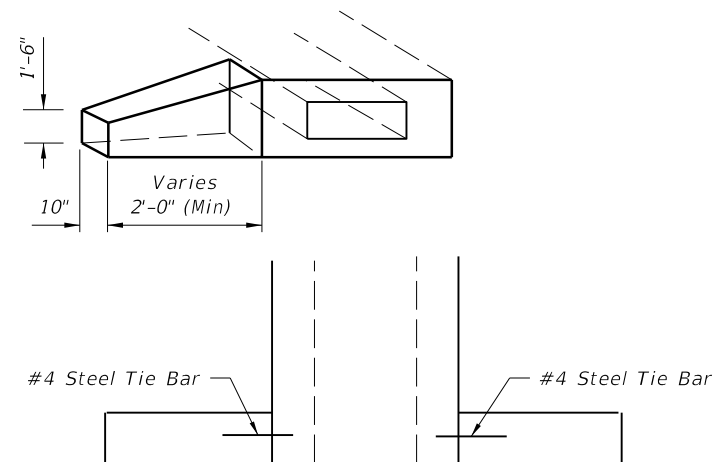


*Bricks to Dissipate Energy When Called For In Plans. Bricks To Be Included In The Cost Of The Inlet.

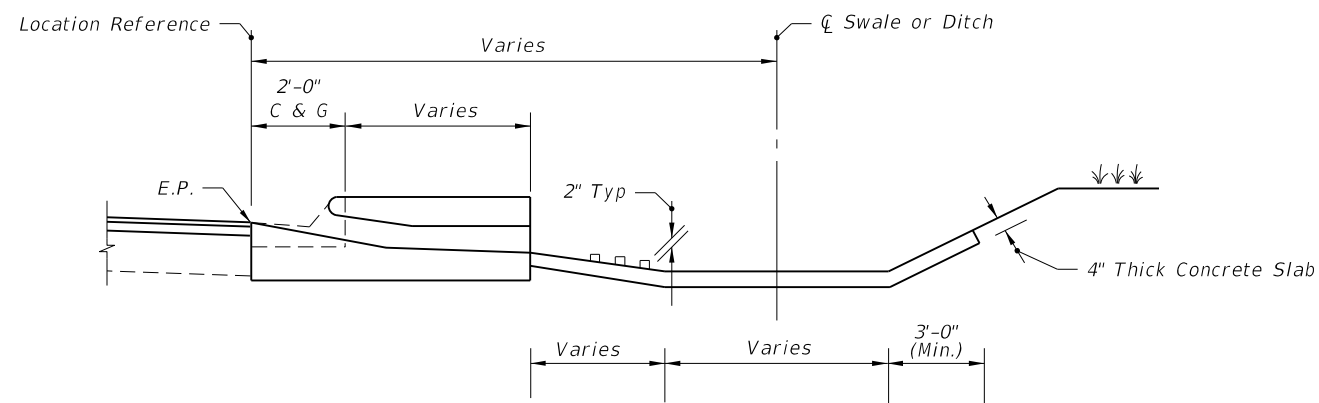
SINGLE BARREL FLUME DEPICTED
PLAN



SINGLE BARREL FLUME DEPICTED
SECTION BB




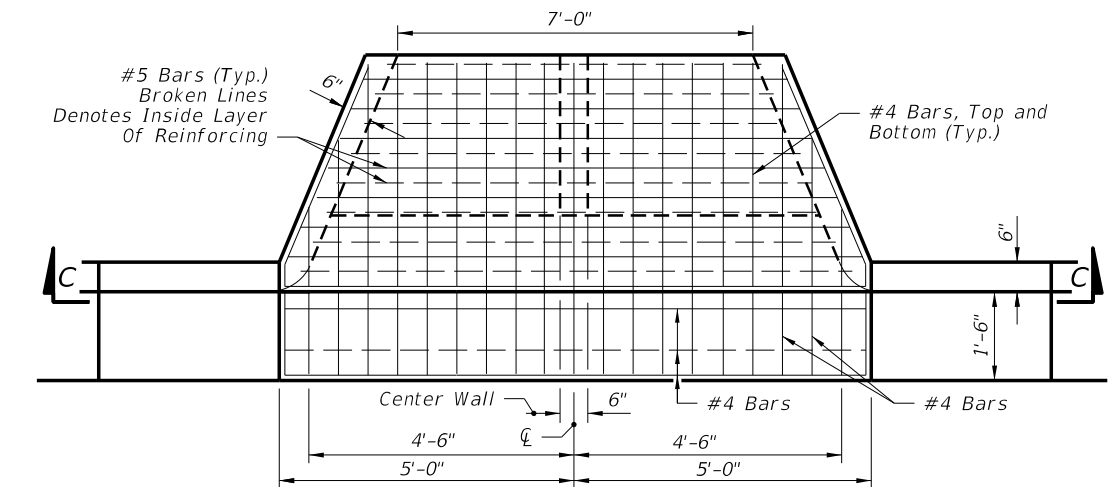
SINGLE BARREL FLUME DEPICTED
ENDWALL



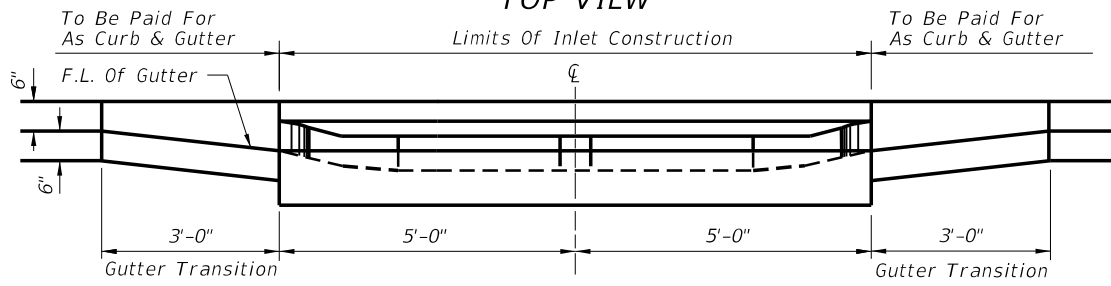
SECTION AA

SLOPES, DITCH APRON AND ENDWALLS

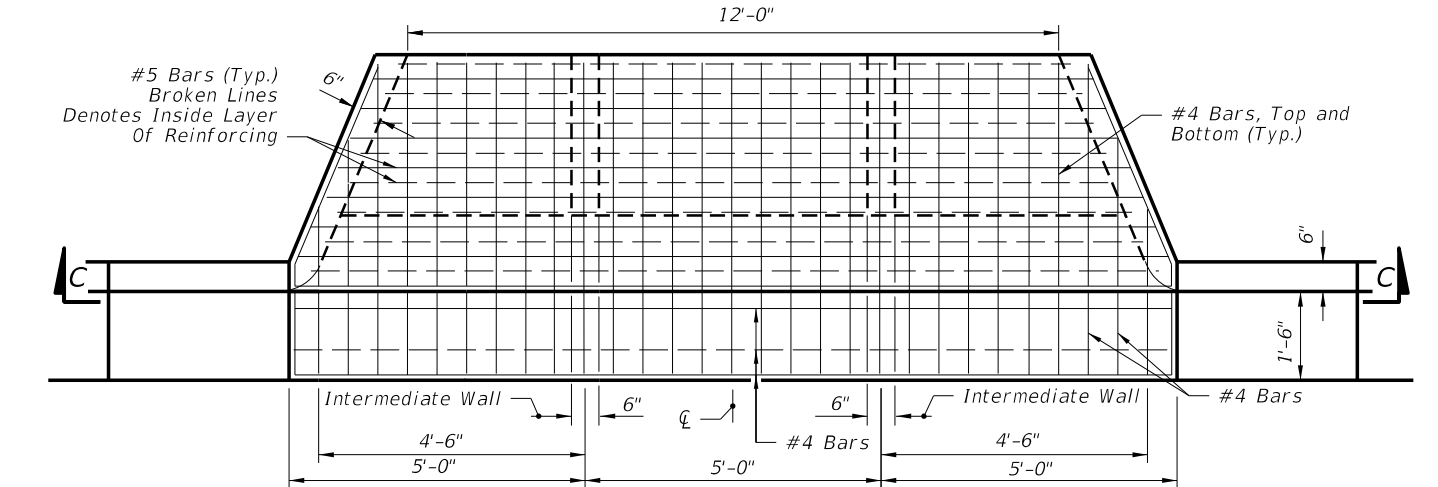
LAST REVISION 07/01/13	DESCRIPTION:	 <p>FDOT 2014 DESIGN STANDARDS</p>	<p>CLOSED FLUME INLET</p>	INDEX NO. 216	SHEET NO. 2 of 3
REVISION					



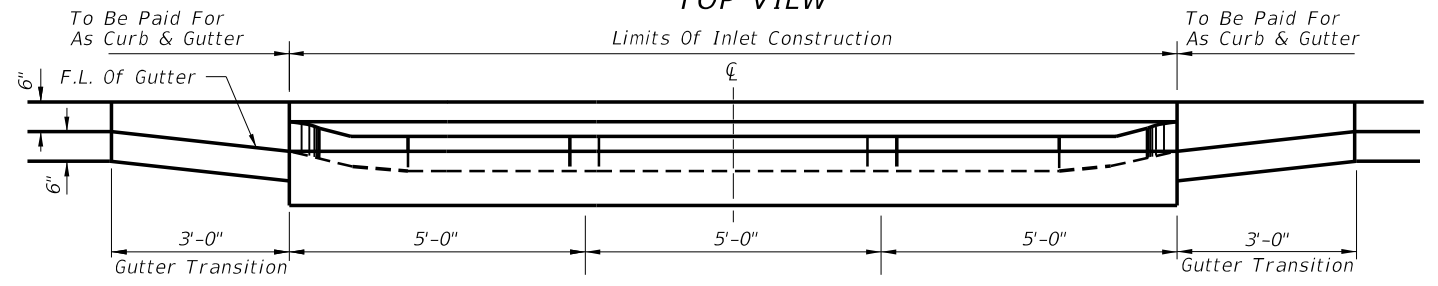
TOP VIEW



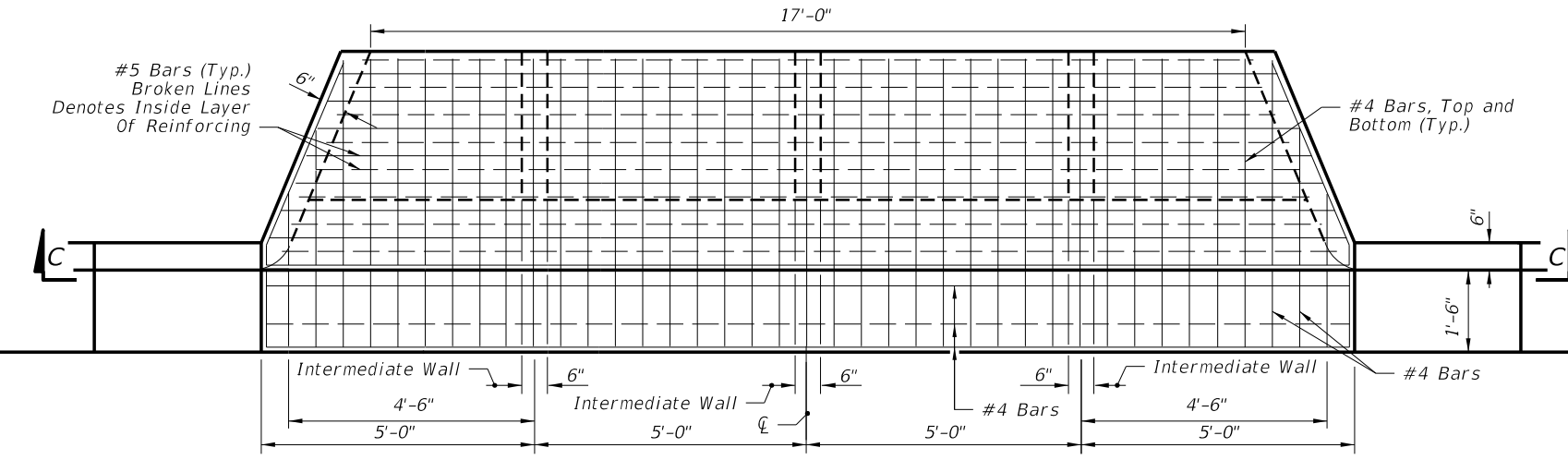
SECTION CC
DOUBLE BARREL FLUME



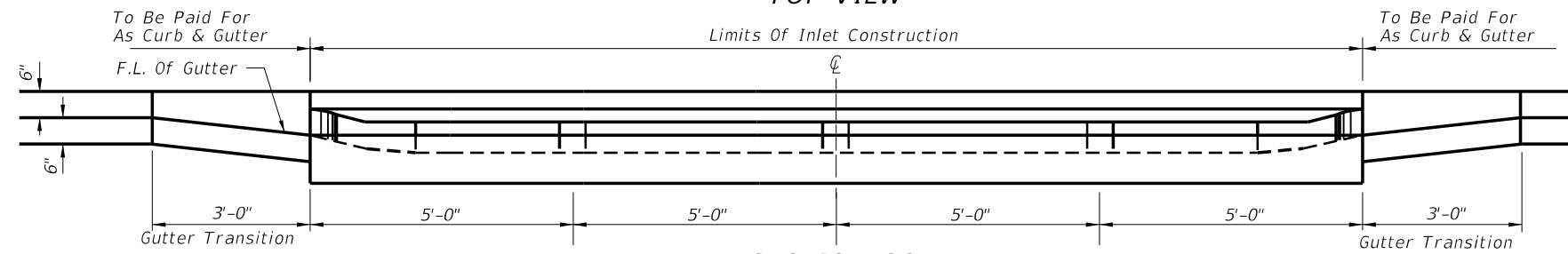
TOP VIEW



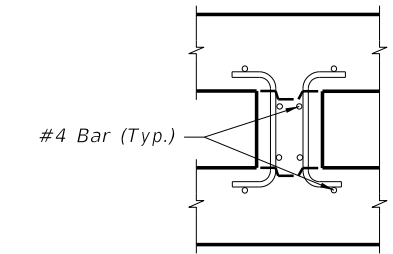
SECTION CC
TRIPLE BARREL FLUME



TOP VIEW



SECTION CC
QUADRUPLE BARREL FLUME



INTER-WALL REINFORCING

NOTE: See Single Barrel Flume For Base Dimensions.

C:\projects\standards\roadway\02200-s\00216-03.dgn smg70re 4:39:12 PM 6/24/2013

LAST REVISION	REVISION	DESCRIPTION:	 FDOT 2014 DESIGN STANDARDS	CLOSED FLUME INLET	INDEX NO. 216	SHEET NO. 3 of 3
07/01/02						