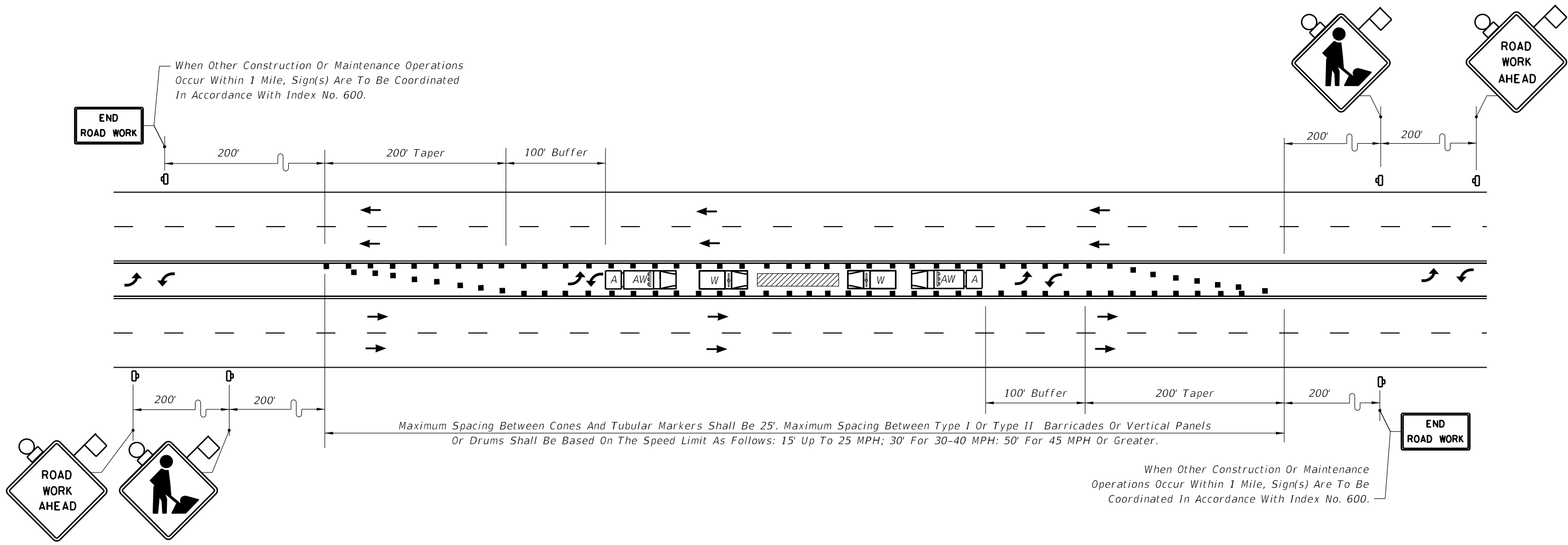


C:\projects\standards\roadway\00600-s\00628-01.dgn
r0960rh
10:55:17 AM
6/28/2012



SYMBOLS

- Work Area
- Channelizing Device (See Index No. 600)
- Work Zone Sign
- Work Vehicle With Rotating/Strobe Lights
- Shadow (S) Or Advance Warning (AW) Vehicle with Advance Warning Arrow Board and Sign Message
- Truck/Trailer Mounted Attenuator (TMA)
- Sign With 18" x 18" (Min.) Orange Flag And Type B Light

GENERAL NOTES

1. Work operations shall be confined to two way left turn lane, leaving the adjacent lanes open to traffic.
2. Advance Warning Vehicle will have an Advanced Warning Arrow Board in the Warning Mode.
3. When a side road intersects the highway within the TTC zone, additional TTC devices shall be placed in accordance with other applicable TCZ Indexes.
4. For general TCZ requirements and additional information, refer to Index No. 600.

CONDITIONS

WHERE ANY VEHICLE, EQUIPMENT, WORKERS OR THEIR ACTIVITIES ARE BEING CONDUCTED IN THE TWO WAY LEFT TURN LANE.

LAST REVISION	07/01/10	DESCRIPTION:	FDOT DESIGN STANDARDS 2013	TWO WAY LEFT TURN LANE CLOSURE	INDEX NO.	SHEET NO.
					628	1