




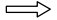


C:\projects\standards\roadway\00600-s\00620-01.dgn
 r1960rh
 11:45:32 AM
 12/30/2011

GENERAL NOTES

1. TWO-WAY TRAFFIC sign(s) shall be repeated every 1/4 mile in each direction, throughout the tangent distance (T).
2. L (min.) = WS for speeds ≥ 45 mph
 $= \frac{WS^2}{60}$ for speeds ≤ 40 mph
 Where:
 W = Width of lateral transition in feet.
 S = Posted speed limit (mph).
3. Where the tangent distance (T) exceeds 250', spacing between Type I or II barricades or vertical panels or drums may be increased to 100' within the limits of the tangent, or post mounted delineators at 50' centers may be substituted for barricades, vertical panels or drums.
4. All existing pavement markings within the realignment which conflict with the revised traffic pattern are to be removed and removable pavement markings used for making new edge lines.
5. When side roads, cross roads or interchanges intersects the highway within the TTC zone, additional TTC devices shall be placed in accordance with other applicable TCZ Indexes.
6. For general TCZ requirements and additional information, refer to Index No. 600.

SYMBOLS

-  Work Area
-  Sign With 18" x 18" (Min.)
Orange Flag And Type B Light
-  Channelizing Device (See Index No. 600)
-  Work Zone Sign
-  Advance Warning Arrow Board
-  Lane Identification + Direction of Traffic

SCHEME APPLICATIONS

- Scheme 1: Restricted Construction Limits.
- Scheme 2: Unrestricted Construction Limits
And Light To Moderate Traffic.
- Scheme 3: Unrestricted Construction Limits
And Moderate To Heavy Traffic.
- Where: Construction Limits Are The
Outward Beginning Or Ending
Of Lane Reductions.
- Where: Unless A Specific Scheme Is
Called For In The Plans, Scheme
Selection Shall Be At The Contractor's
Option And As Approved By The
Engineer.

CONDITIONS

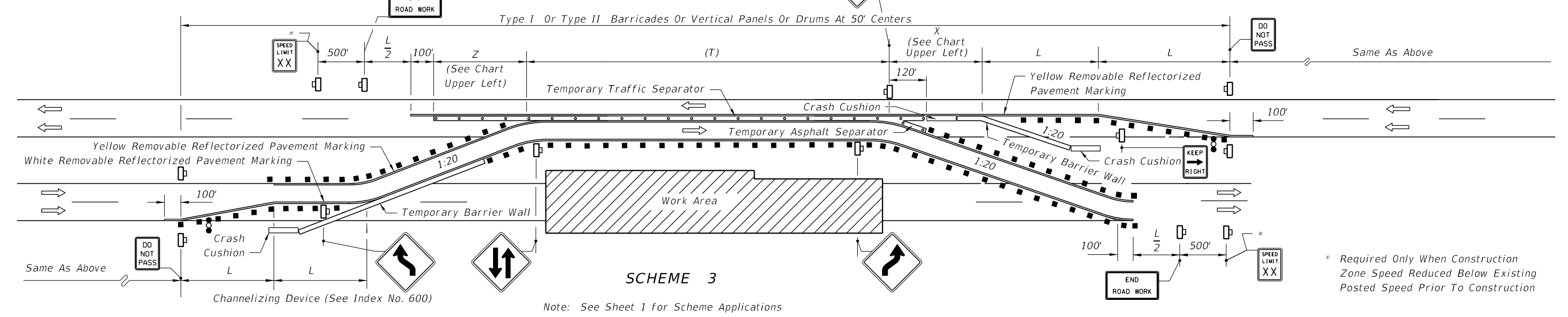
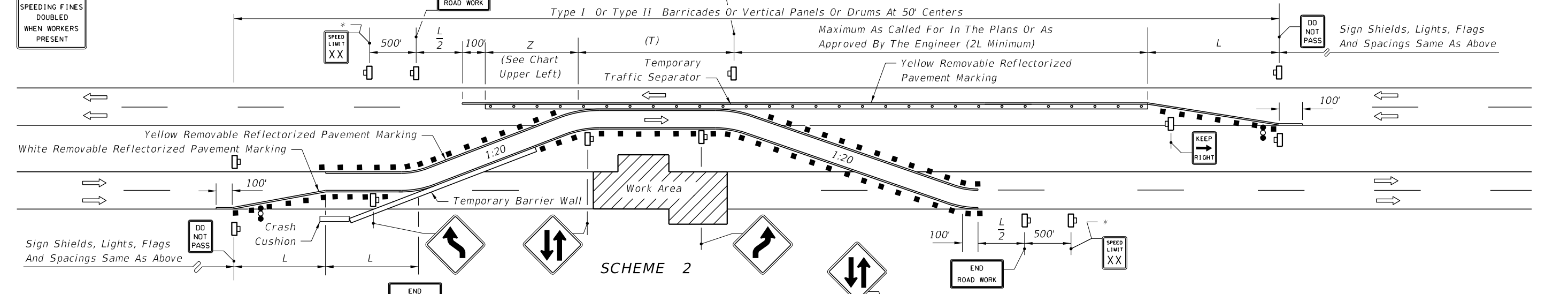
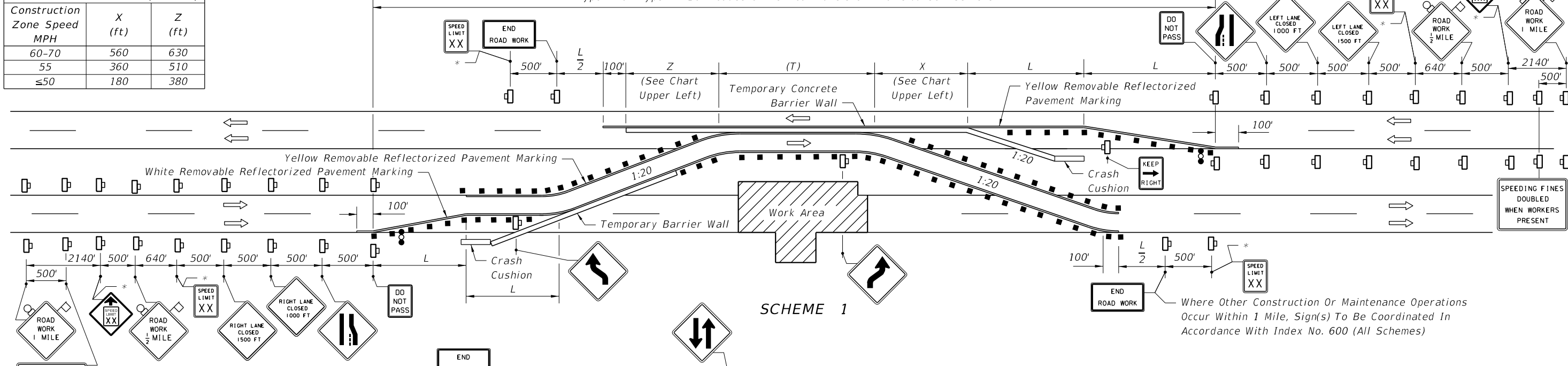
WHERE ANY VEHICLE, EQUIPMENT,
WORKERS OR THEIR ACTIVITIES
REQUIRE THE CLOSURE OF ONE
ROADWAY AND THE OPPOSING
ROADWAY IS CONVERTED TO
TEMPORARY TWO-WAY TRAVEL BY
WAY OF CROSSOVERS.

LAST REVISION	REVISION	DESCRIPTION:		FDOT DESIGN STANDARDS FY 2012/2013	MULTILANE, DIVIDED, TEMPORARY DIVERSION CONNECTION	INDEX NO.	SHEET NO.
07/01/09						620	1

BUFFER LENGTH (FEET)

Construction Zone Speed MPH	X (ft)	Z (ft)
60-70	560	630
55	360	510
≤50	180	380

Type I Or Type II Barricades Or Vertical Panels Or Drums At 50' Centers



Note: See Sheet 1 for Scheme Applications

* Required Only When Construction Zone Speed Reduced Below Existing Posted Speed Prior To Construction

C:\projects\standards\roadway\00600-s\00620-02.dgn
r0960/h
11:45:33 AM
12/30/2011