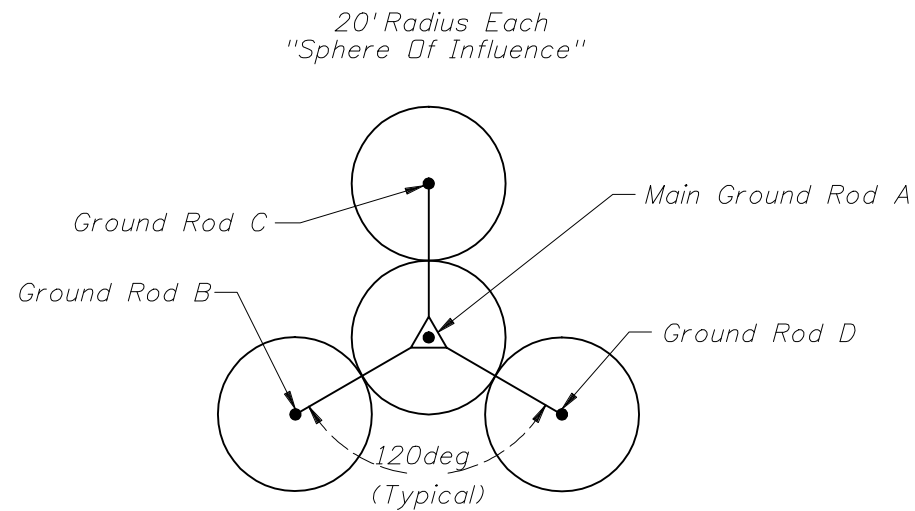


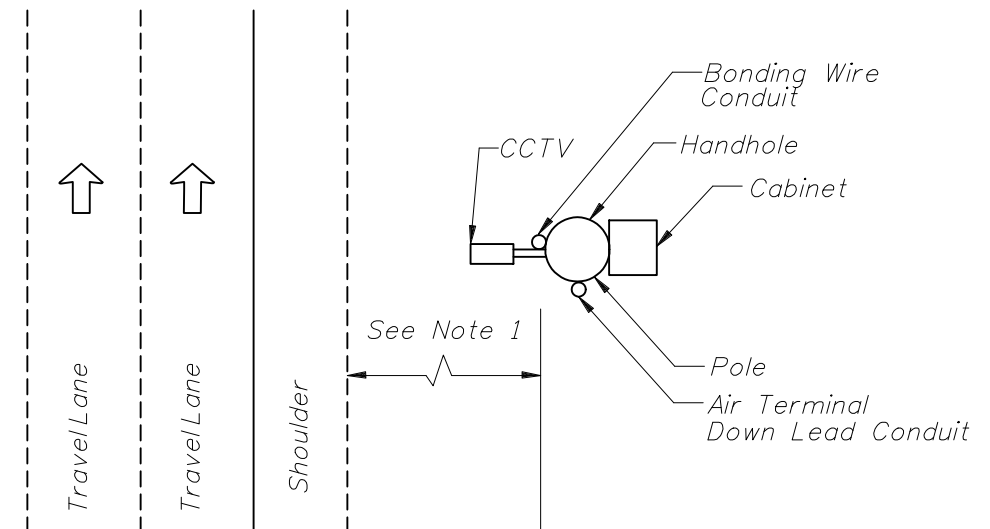
INSET "A"



GROUND ROD PLACEMENT DETAIL  
(Typical Each Pole)

**GENERAL NOTES:**

1. Distance must be in accordance with project design documents and greater than or equal to minimum clear zone requirements.
2. Exothermically weld all connections to ground rods.
3. Install marker tape directly above all grounding electrodes and conductors at a depth of 6".
4. All data, coaxial and power cables to the camera shall be completely concealed.
5. All air terminals must meet UL-96A.
6. Ground rod A is required. Ground rods B, C and D will be required as necessary to meet the ground resistance requirements in the contract documents.
7. Place ground system within right of way.
8. Route all camera cables inside arm of mounting bracket.
9. Main ground rod to be placed immediately adjacent to pole.



ORIENTATION OF CONDUITS AND DEVICES ON POLE

Not To Scale



2010 FDOT Design Standards

CCTV POLE GROUNDING

Last Revision	Sheet No.
07/01/07	2 of 2
Index No.	
18102	