

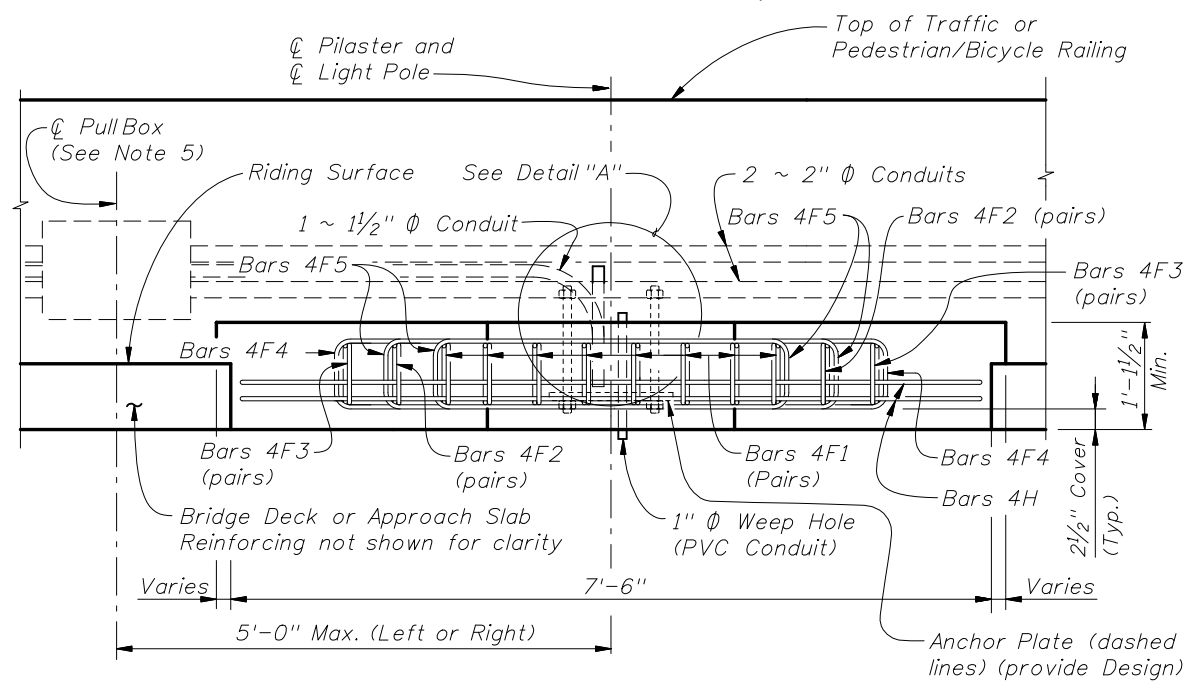
\* Slip Forming Method of Construction is not allowed within the limits shown.

\*\* For Index No. 820 - Pedestrian/Bicycle Railing, this dimension is 4 1/2". For all other Railings, this dimension is 2 Eq. Sp. @ 6" Max.

\*\*\* Anchor Bolt pattern orientation shall be as shown.

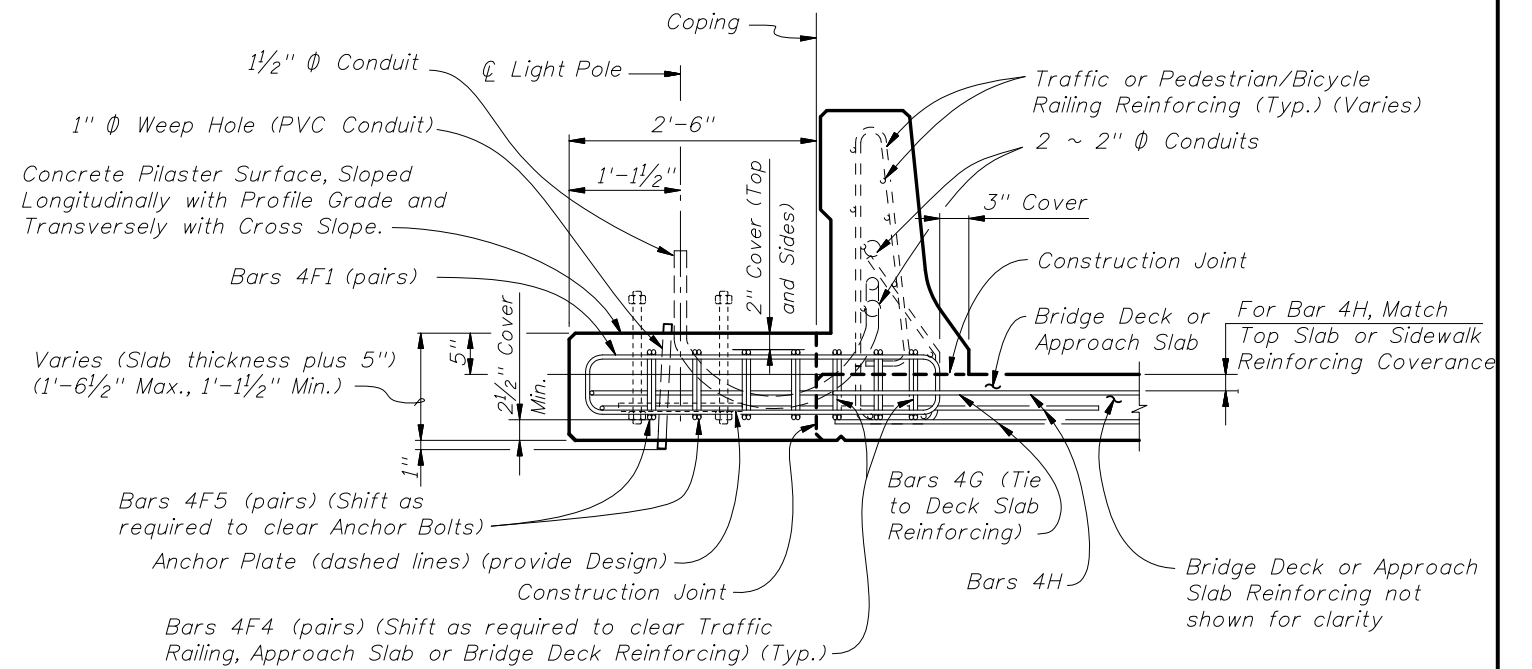
**PLAN VIEW**

(Anchor Plate not shown for clarity)

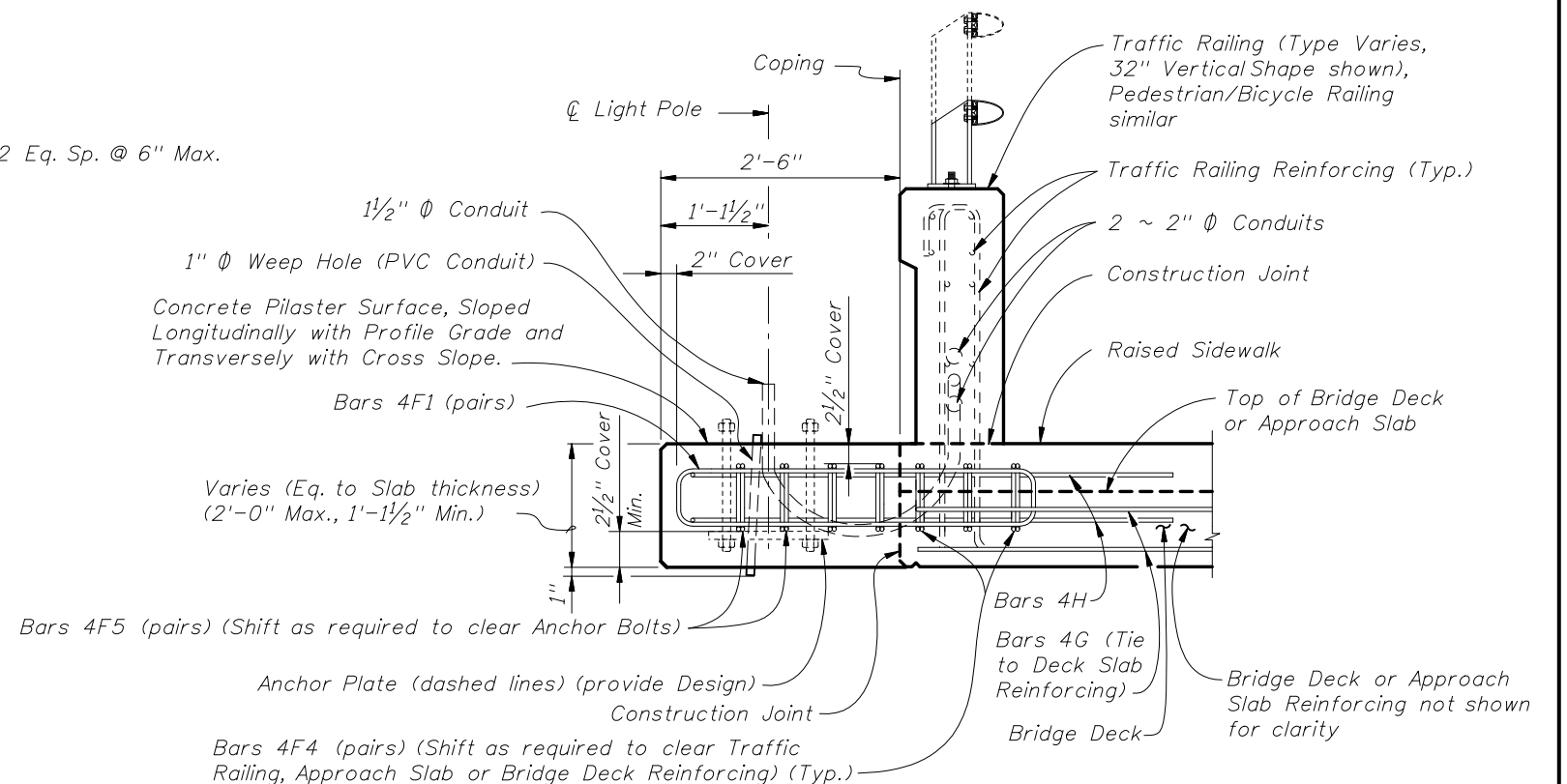


**ELEVATION VIEW**

(Bars 4G not shown for clarity)



**TYPICAL SECTION AT LIGHT POLE PILASTER FOR APPROACH SLAB OR BRIDGE DECK THICKNESS LESS THAN 1'-1/2".**

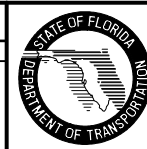


**TYPICAL SECTION AT LIGHT POLE PILASTER FOR APPROACH SLAB OR BRIDGE DECK THICKNESS 1'-1/2" OR GREATER**

CROSS REFERENCE:  
For Detail "A" and Light Pole Pilaster Notes, see Sheet 2.

**REVISIONS**

DATE	BY	DESCRIPTION	DATE	BY	DESCRIPTION
01/01/08	DYW	Added "Anchor Plate (dashed lines) (provide Design)" to ELEVATION VIEW and TYPICAL SECTION'S.			



2008 Interim Design Standard

**LIGHT POLE PILASTER**

Interim Date	Sheet No.
01/01/08	1 of 2
Index No.	
21200	