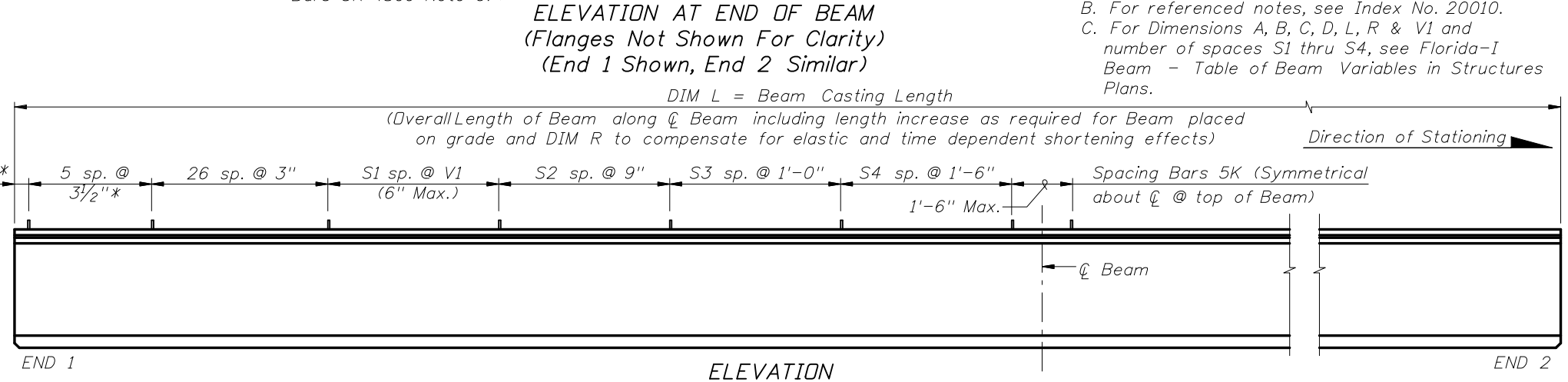
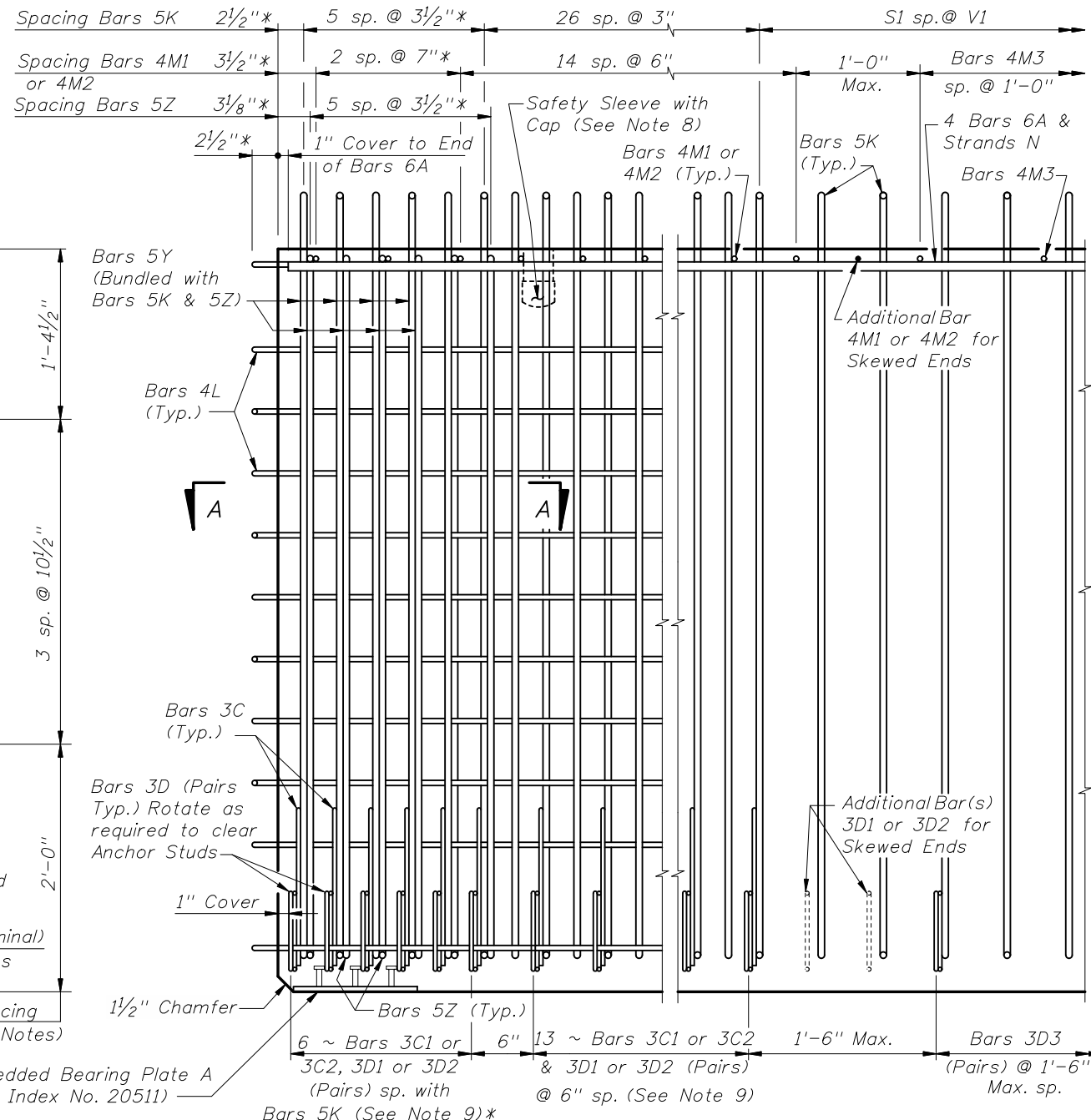
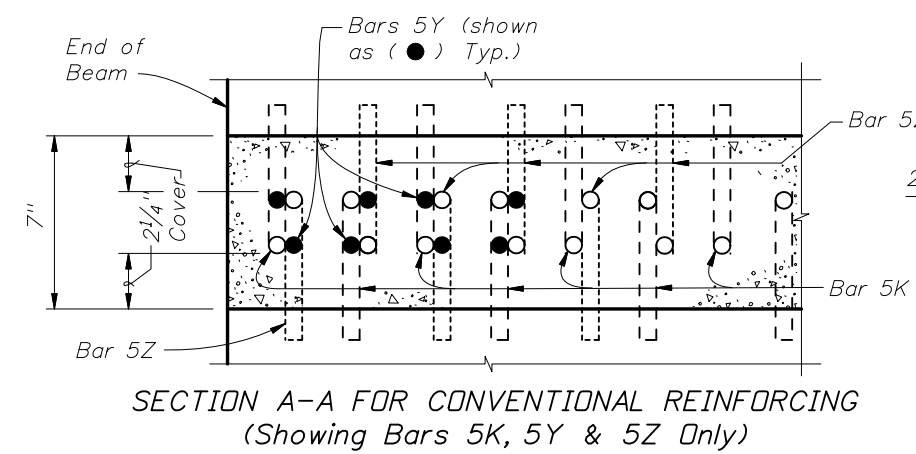
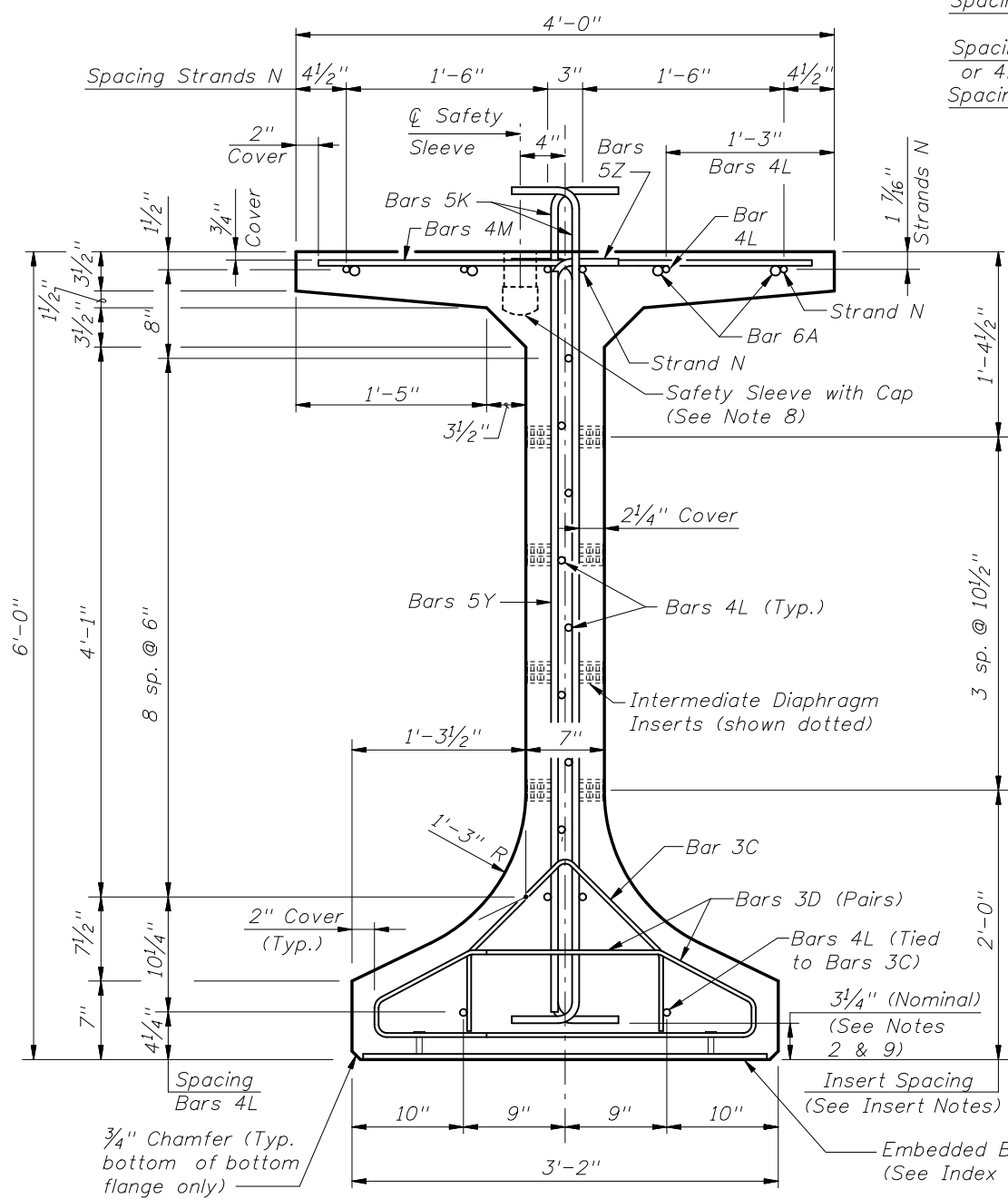


\* These dimensions are measured perpendicular to the end of beam



### CONVENTIONAL REINFORCING BAR BENDING DETAILS

| BILL OF REINFORCING STEEL |                |                    |                 |                 |
|---------------------------|----------------|--------------------|-----------------|-----------------|
| MARK                      | NOTE NUMBERS   | SIZE               | NUMBER REQUIRED | LENGTH (NOTE 1) |
| A                         | —              | 6                  | 8               | 26'-0"          |
| C1                        | 9, 10 & 11     | 3                  | 19 (End 1)      | Varies          |
| C2                        | 9, 10 & 11     | 3                  | 19 (End 2)      | Varies          |
| D1                        | 9, 10, 11 & 14 | 3                  | 38 (End 1)      | Varies          |
| D2                        | 9, 10, 11 & 14 | 3                  | 38 (End 2)      | Varies          |
| D3                        | 9 & 14         | 3                  | See Table       | 4'-3"           |
| K                         | 2, 9, 11 & 13  | 5                  | See Table       | 7'-2"           |
| L                         | 3 & 4          | 4                  | 28              | 4'-10"          |
| M1                        | 9 & 10         | 4                  | 17 (End 1)      | Varies          |
| M2                        | 9 & 10         | 4                  | 17 (End 2)      | Varies          |
| M3                        | 9              | 4                  | See Table       | 3'-8"           |
| N                         | 5              | 3/8" $\phi$ Strand | 4               | DIM L + 5"      |
| Y                         | 9 & 11         | 5                  | 16              | 5'-6"           |
| Z                         | 2, 9, 11 & 13  | 5                  | 12              | 6'-8"           |

#### BENDING DIAGRAMS (See Note 1)

**BARS 3D1, 3D2 & 3D3**

**BARS 5K & 5Z**

**BARS 3C1 & 3C2**

**BARS 4L**

**BARS 5A, 4M1, 4M2, 4M3 & 5Y**

**NOTES:**  
 A. Work this Index with Index No. 20010 - Typical Florida-I Beam Details and Notes and the Florida-I Beam - Table of Beam Variables in Structures Plans.  
 B. For referenced notes, see Index No. 20010.  
 C. For Dimensions A, B, C, D, L, R & V1 and number of spaces S1 thru S4, see Florida-I Beam - Table of Beam Variables in Structures Plans.

| REVISIONS |     |                     |      |    |             |
|-----------|-----|---------------------|------|----|-------------|
| DATE      | BY  | DESCRIPTION         | DATE | BY | DESCRIPTION |
| 07/01/09  | RMS | New Design Standard |      |    |             |

2008 Interim Design Standard

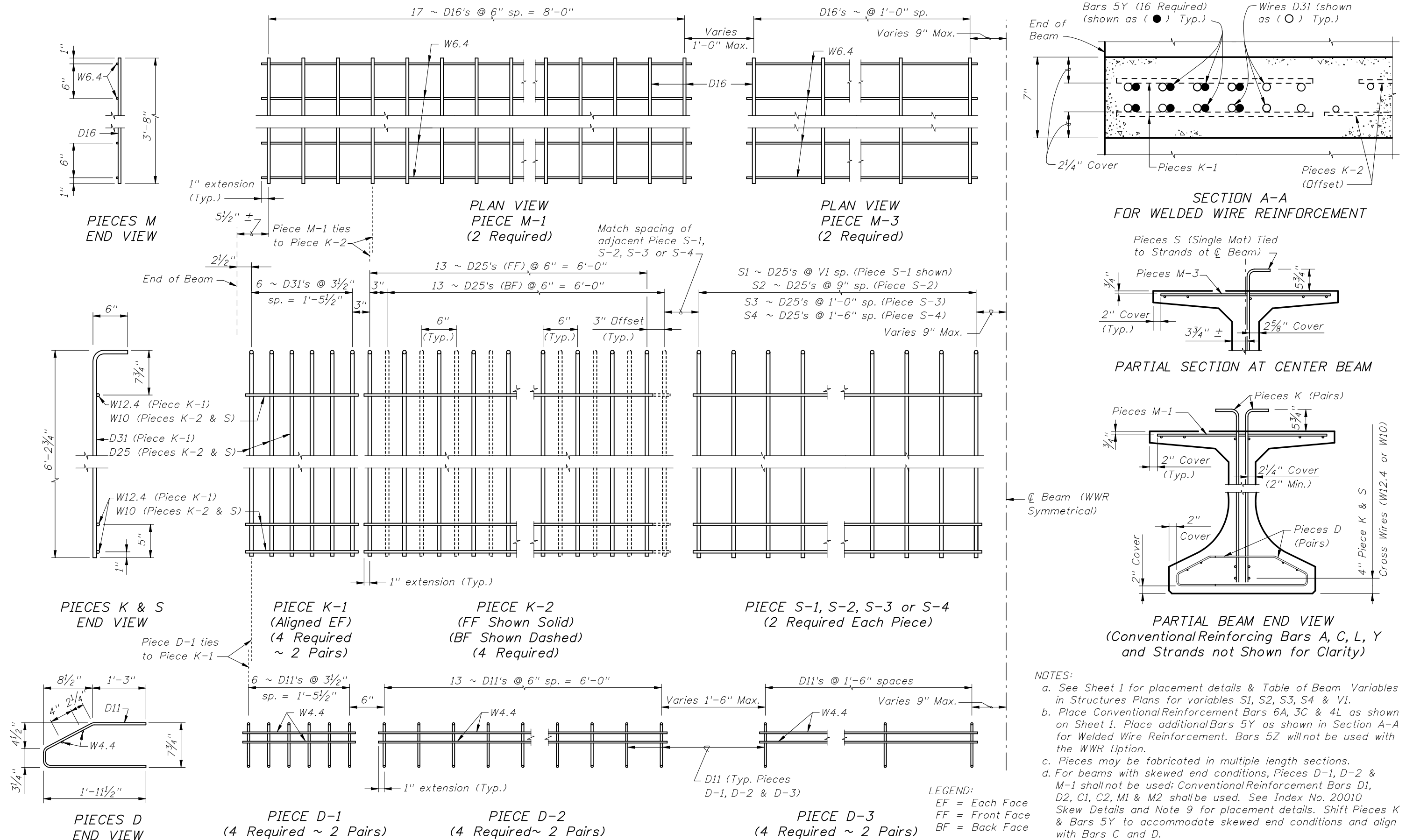
**FLORIDA-I 72 BEAM - STANDARD DETAILS**

Interim Date  
07/01/09

Sheet No.  
1 of 2

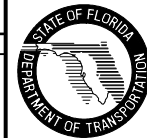
Index No.  
**20072**

ALTERNATE REINFORCING STEEL (WELDED WIRE REINFORCEMENT) DETAILS



**NOTES:**  
 a. See Sheet 1 for placement details & Table of Beam Variables in Structures Plans for variables S1, S2, S3, S4 & V1.  
 b. Place Conventional Reinforcing Bars 6A, 3C & 4L as shown on Sheet 1. Place additional Bars 5Y as shown in Section A-A for Welded Wire Reinforcement. Bars 5Z will not be used with the WWR Option.  
 c. Pieces may be fabricated in multiple length sections.  
 d. For beams with skewed end conditions, Pieces D-1, D-2 & M-1 shall not be used; Conventional Reinforcing Bars D1, D2, C1, C2, M1 & M2 shall be used. See Index No. 20010 Skew Details and Note 9 for placement details. Shift Pieces K & Bars 5Y to accommodate skewed end conditions and align with Bars C and D.

| REVISIONS |     |                     |      | DATE |             | DESCRIPTION |  |
|-----------|-----|---------------------|------|------|-------------|-------------|--|
| DATE      | BY  | DESCRIPTION         | DATE | BY   | DESCRIPTION |             |  |
| 07/01/09  | RMS | New Design Standard |      |      |             |             |  |



STATE OF FLORIDA  
DEPARTMENT OF TRANSPORTATION

2008 Interim Design Standard

**FLORIDA-I 72 BEAM - STANDARD DETAILS**

Interim Date  
**07/01/09**

Sheet No.  
**2 of 2**

Index No.  
**20072**