

GENERAL AND FABRICATION NOTES:

- Furnish Poured Joint With Backer Rod Expansion Joint Systems in accordance with Specification Section 932 and that are listed on the Qualified Products List. Furnish joint systems consisting of Poured Joint Material, Foam Backer Rods, Sidewalk Cover Plates (as required) and all associated miscellaneous components. Poured Joint Material shall be an ultra-low modulus, self-leveling silicone formulation, cold-applied, rapid-cure, used to seal expansion joints that experience both thermal and/or vertical movements. The Poured Joint Material must cure by chemical reaction and not by evaporation of solvent or fluxing of harder particles. Tooling of the Poured Joint Material shall not be required. Poured Joint Material shall meet the following requirements:

Property or Characteristic	Test Method	Result
Extrusion rate	MIL S 8802	3.3 - 9.2 g/s
Tack-free time at 77 ± 3° F and 45 to 55% Relative Humidity	MIL S 8802	30 - 60 minutes
Specific gravity	ASTM D 792, Method A	1.26 to 1.34
Elongation (Cured seven days at 77 ± 3° F and 50 ± 5% Relative Humidity)	ASTM D 412 (Die C)	600% Minimum
Movement Capability	ASTM C 719	No adhesive or cohesive failure and adhesion, 10 cycles at +100/-50% (joints 2" wide)

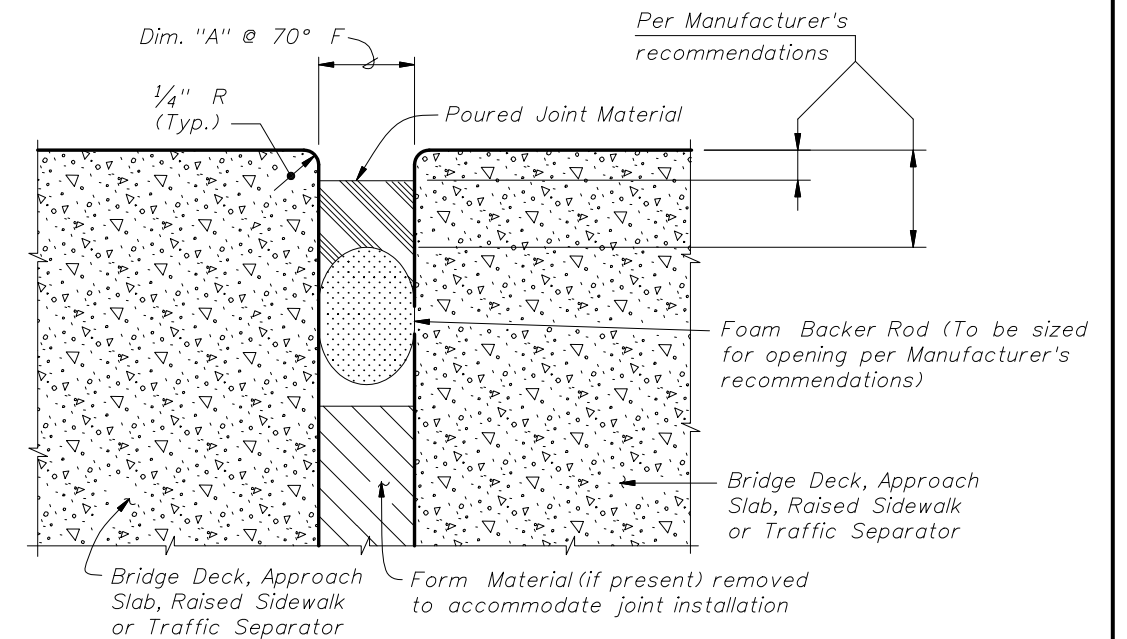
- Furnish 1/4" thick slip resistant steel Sidewalk Cover Plates in accordance with ASTM A709, Grade 36 or 50, with a minimum coefficient of friction after galvanizing on the top surface of 0.8 in a dry condition as determined by ASTM F1677 or F1679 and 0.68 or 0.52 in a wet condition as determined by ASTM F1679 or ASTM F1677 (respectively); that incorporate an anti-slip steel surface consisting of a random hatch matrix or other suitable pattern and that are listed as slip-resistant by Underwriters Laboratories. Do not use diamond plate or surface applied slip resistant tapes, films, nonmetallic coatings or other similar materials. Furnish flat head Stainless Steel Sleeve Anchors in accordance with ASTM F593 Group 1 Alloy 304 for attaching Sidewalk Cover Plates. Install Sleeve Anchors in accordance with manufacturer's recommendations.
- Hot-dip galvanize Sidewalk Cover Plates after shop fabrication in accordance with Section 962 of the Specifications and manufacturer's recommendations.
- Submit shop drawings for Sidewalk Cover Plates (as required) showing all materials and project specific details and dimensions.
- Manufacturers seeking approval of Poured Joint with Backer Rod Expansion Joint Systems for inclusion on the Qualified Products List as pre-approved designs must submit application along with design documentation showing the expansion joint meets the specification, geometric and material requirements specified herein.

CONSTRUCTION AND INSTALLATION NOTES:

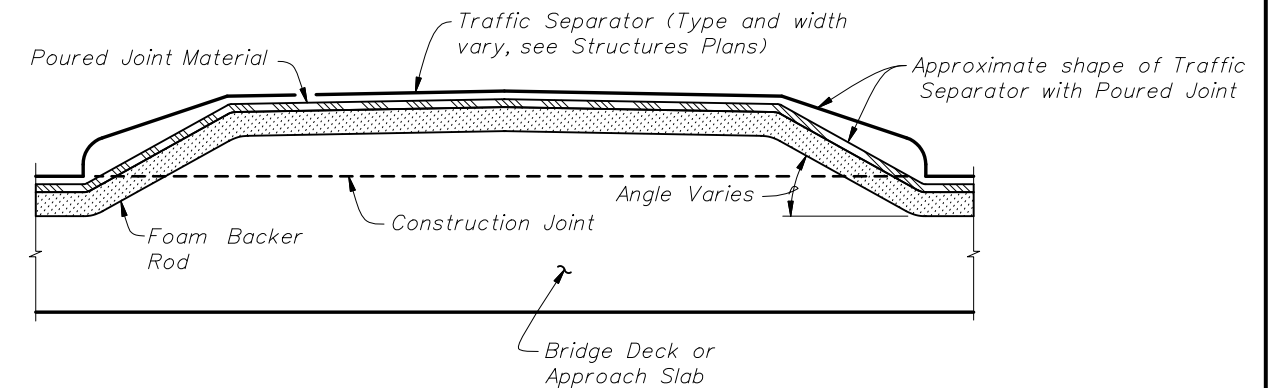
- When casting the Bridge Deck, Approach Slab or Raised Sidewalk adjacent to the joint at temperatures other than 70° F, adjust Dim. "A" at 70° F by the amount of the adjustment per 10° F shown in Structures Plans, Poured Expansion Joint Data Table. For temperatures above 70° F decrease the opening, for temperatures below 70° F increase the opening.
- Install Poured Joint with Backer Rod in accordance with manufacturer's recommendations, when the joint opening is between 1 3/4" and 2 1/4" and after deck profiling and grooving operations are completed. Place Poured Joint Material only when the ambient temperature is between 55° F and 85° F and is expected to rise for the next three hours minimum to provide for adequate joint opening and compression of the Poured Joint Material during curing.

INSTRUCTIONS TO DESIGNER:

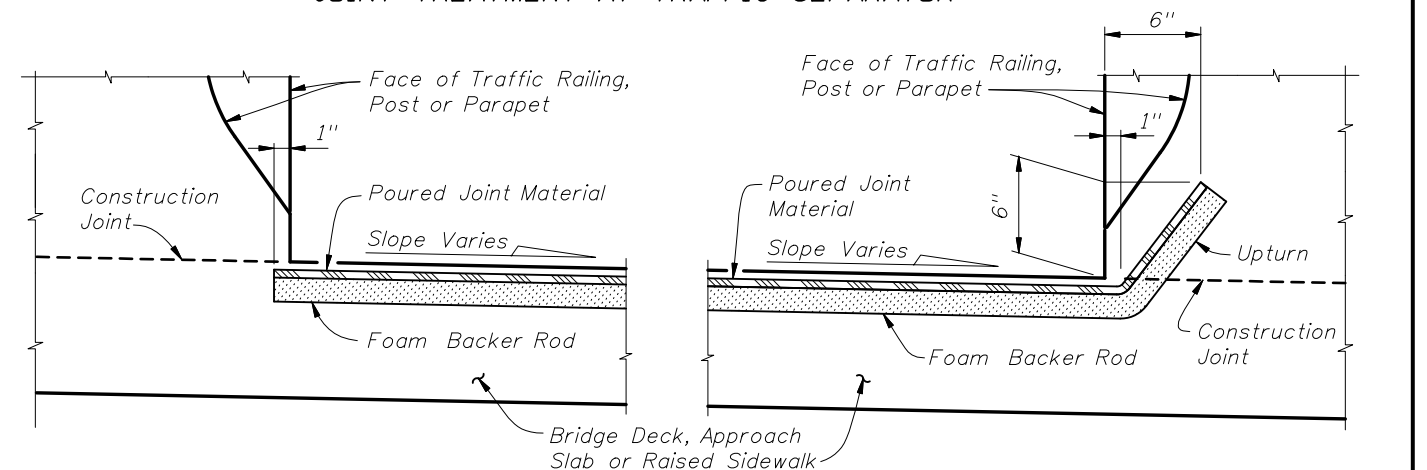
Allow for a minimum (fully closed) opening of 50% of Dimension "A" and a maximum opening of 3" (measured in the direction of travel).



TYPICAL SECTION THRU JOINT

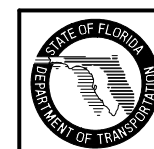


PARTIAL SECTION ALONG CENTERLINE OF JOINT, JOINT TREATMENT AT TRAFFIC SEPARATOR



PARTIAL SECTION ALONG CENTERLINE OF JOINT, JOINT TREATMENT AT HIGH SIDE OF DECK WITH SLOPES 2% OR LESS

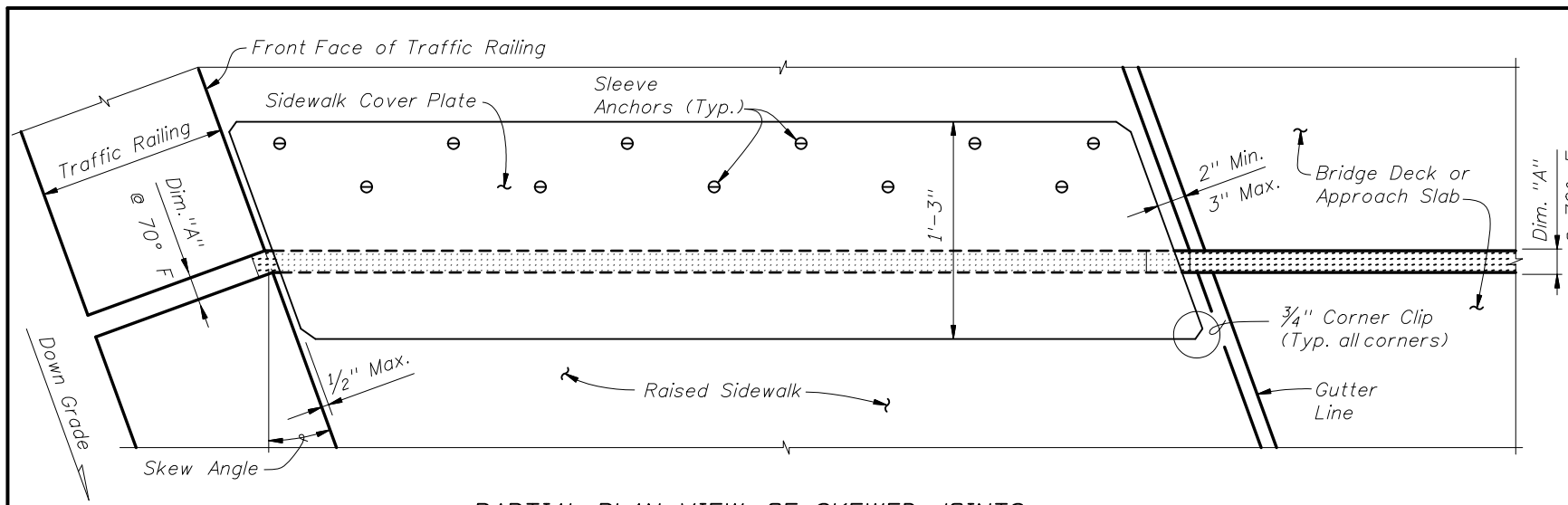
PARTIAL SECTION ALONG CENTERLINE OF JOINT, JOINT TREATMENT AT LOW SIDE OF DECK OR HIGH SIDE OF DECK WITH SLOPES < 2%



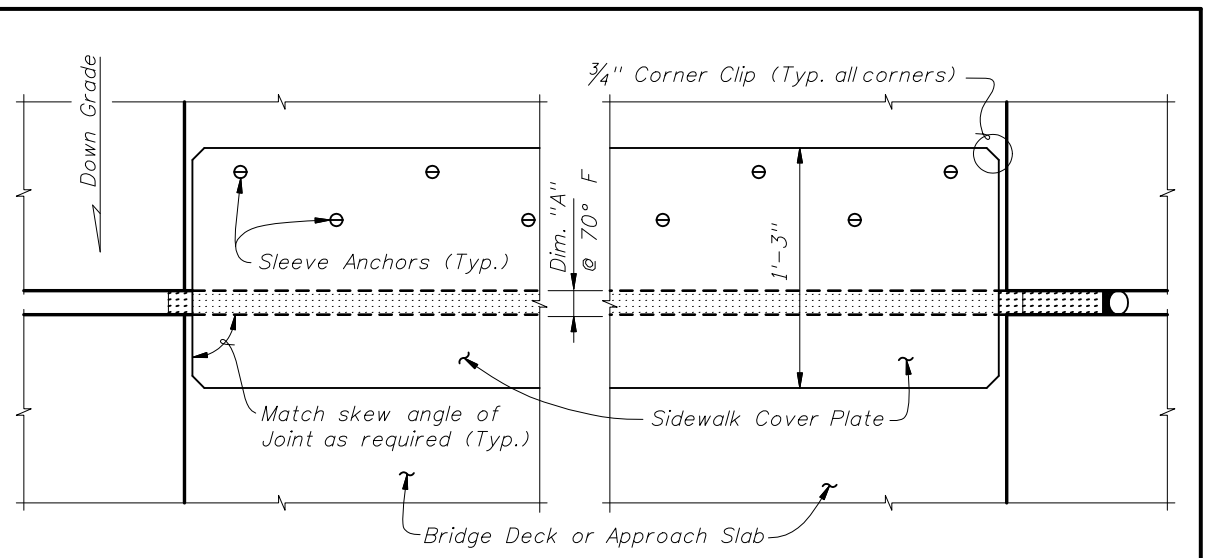
2008 FDOT Design Standards

POURED JOINT WITH BACKER ROD EXPANSION JOINT SYSTEM

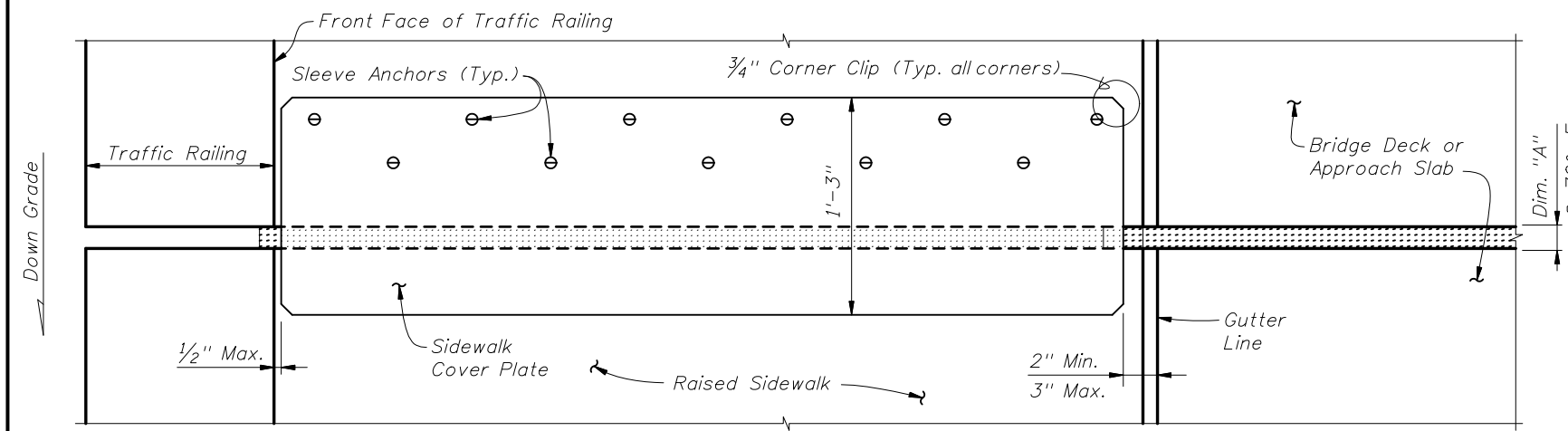
Last Revision: 01/01/06
 Sheet No. 1 of 2
 Index No. 21110



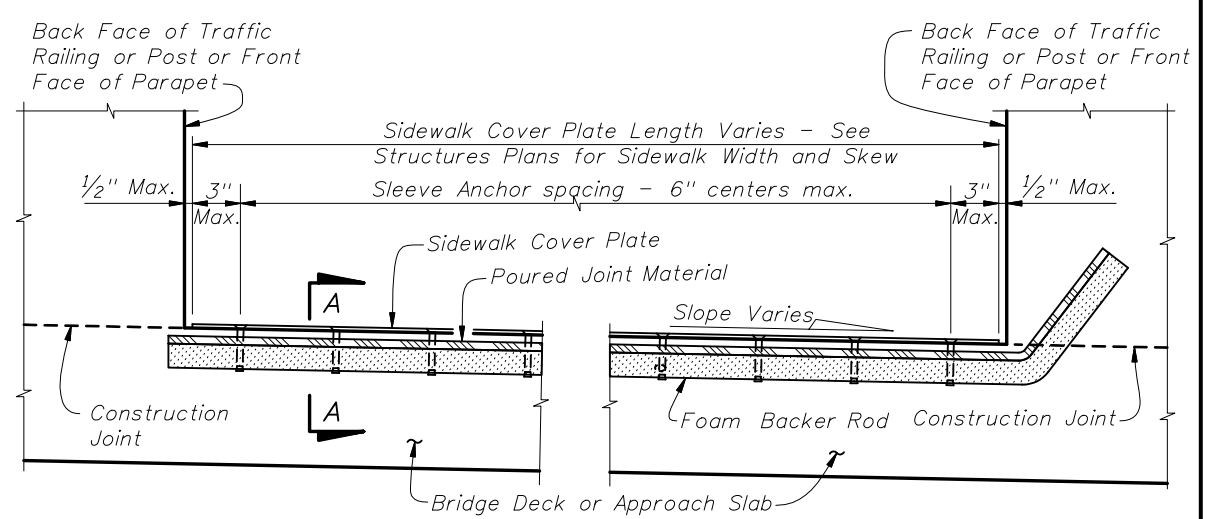
PARTIAL PLAN VIEW OF SKEWED JOINTS



PARTIAL PLAN VIEW

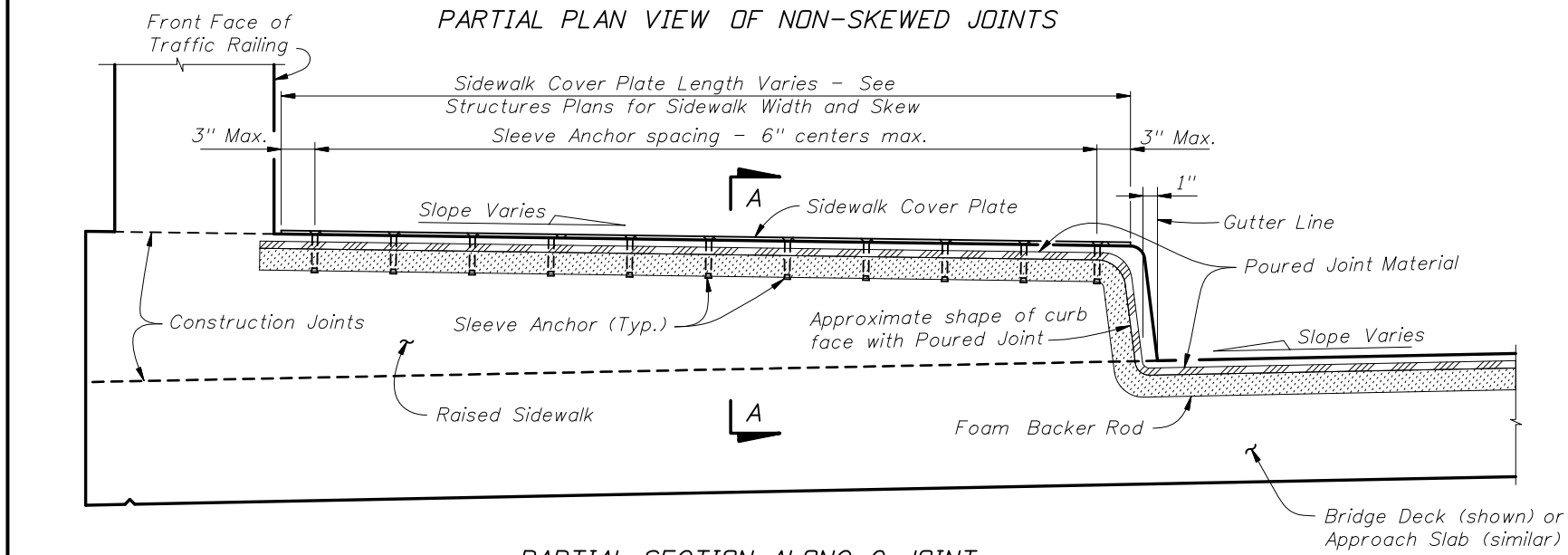


PARTIAL PLAN VIEW OF NON-SKEWED JOINTS



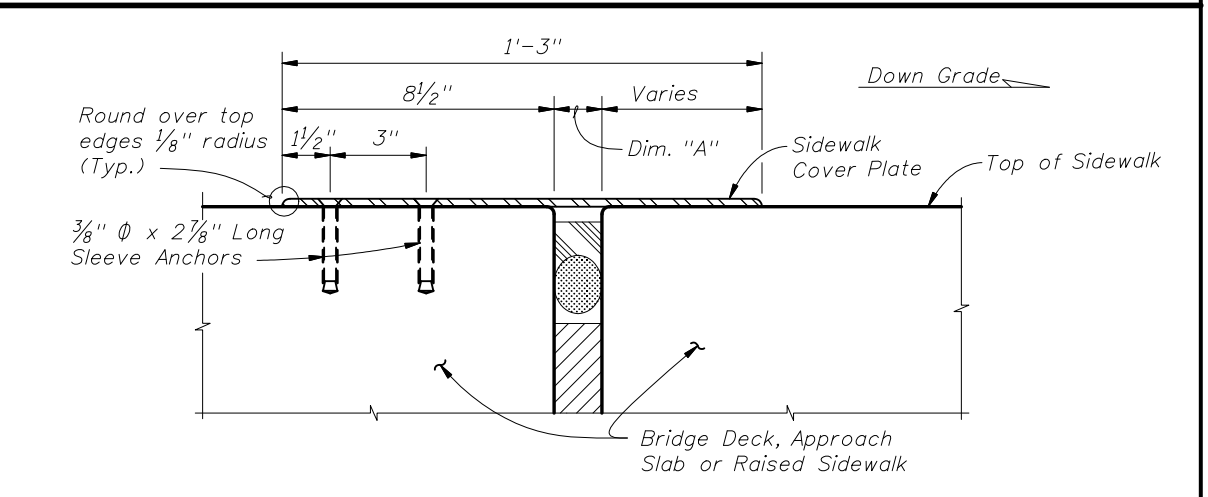
PARTIAL SECTION ALONG Q JOINT

FLUSH SIDEWALK DETAIL



PARTIAL SECTION ALONG Q JOINT

RAISED SIDEWALK DETAIL



SECTION A-A



2008 FDOT Design Standards

**POURED JOINT WITH BACKER ROD
EXPANSION JOINT SYSTEM**

Last Revision 01/01/06 Sheet No. 2 of 2

Index No. 21110