

DETAIL A
WITH LOWERING DEVICE

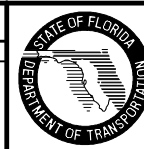
GENERAL NOTES:

1. Lowering device to be shipped ready for pole attachment to include 100 ft of composite power and signal cable pre-wired to lowering device at the factory.
2. The lowering device manufacturers shall supply both a portable lowering tool with a manual hand crank and a portable electric drill motor with custom clutch adapter. One lowering tool per every 10 lowering devices is required.
3. The lowering device manufacturer shall provide an on site installation / operation instruction and certification. This ensures the product is assembled correctly and, more importantly, all necessary persons are trained in the proper safe operation of the system. Before erecting the first pole the contractor must contact the lowering device supplier and schedule for a factory representative to be on site.
4. Lowering device connection to top of pole shall be capable of service tension and shear of 1 kip minimum. The contractor shall provide product cut sheet and capacity data for the engineer's review and approval prior to installation.
5. Camera to be mounted to camera junction box and stabilizing weight via 1/2" Standard NPT Pipe Thread.

Not To Scale

REVISIONS

Date	By	Description	Date	By	Description
01/01/06	ITS	New Design Standard Index.			



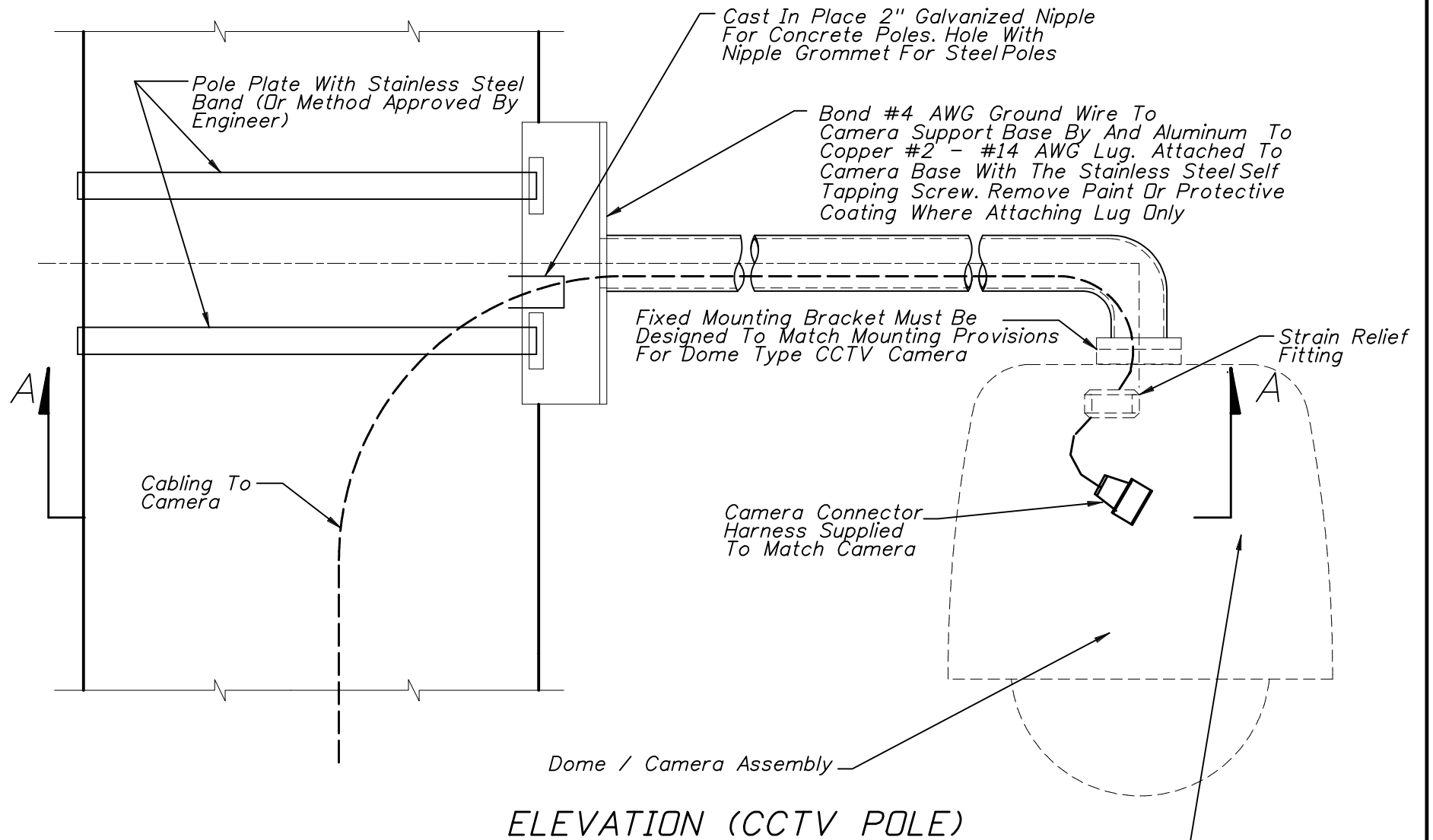
2006 Interim Design Standard

CAMERA MOUNTING DETAILS

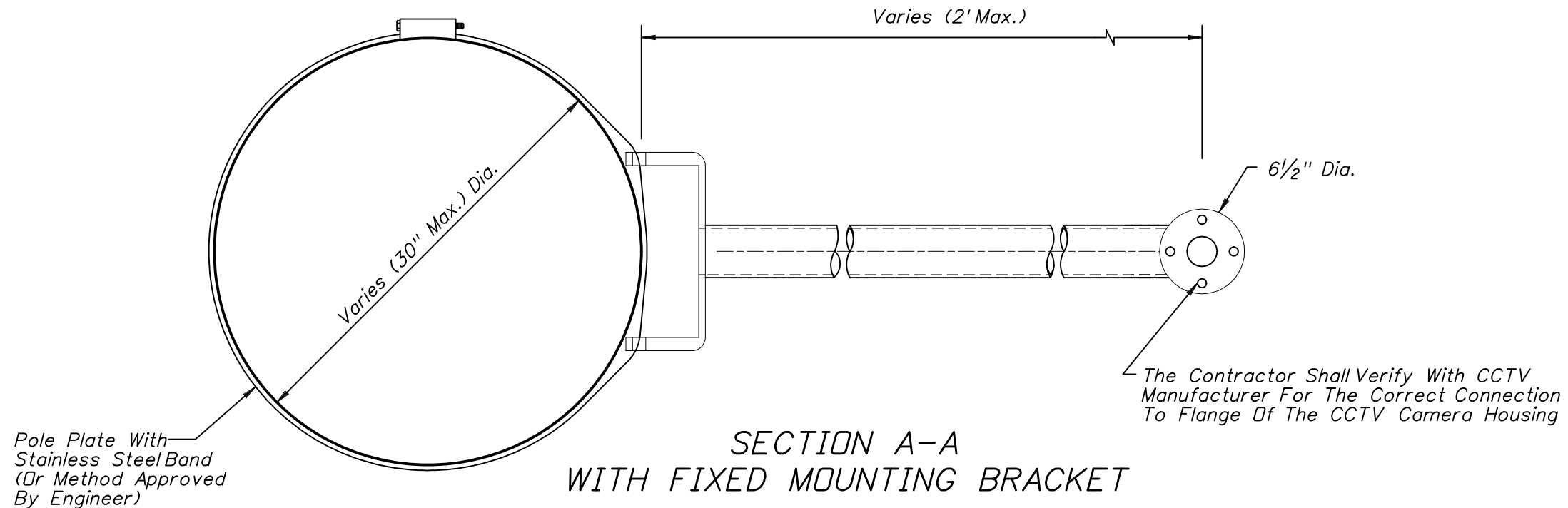
Interim Date	Sheet No.
01/01/06	1 of 2
Index No.	
18110	

GENERAL NOTES:

1. Verify the pole type, the dimensions of the pole at the point of installation of the camera mount and angle with respect to the roadway before manufacturing camera mount assembly.
2. The design of the camera mounting bracket shall conform to the Plans Preparation Manual, Volume I Chapter 29 and shall allow for the additional weight of the CCTV dome camera system.
3. No field welding shall be permitted.
4. Mounting bracket arm shall be level after installation.
5. The contractor shall submit shop drawings for the proposed fixed mounting arm, signed and sealed by a professional engineer registered in the state of Florida, to the engineer for review and approval.
6. See Index 18113, for concrete pole details.
7. Galvanized pipe connections and conduit entry points shall be sealed in accordance with Section 630 of the Standard Specifications For Road and Bridge Construction.



ELEVATION (CCTV POLE)

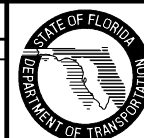


**SECTION A-A
WITH FIXED MOUNTING BRACKET**

Not To Scale

REVISIONS

Date	By	Description	Date	By	Description
01/01/06	ITS	New Design Standard Index.			



2006 Interim Design Standard

CAMERA MOUNTING DETAILS

Interim Date: 01/01/06
Sheet No.: 2 of 2

Index No.: 18110