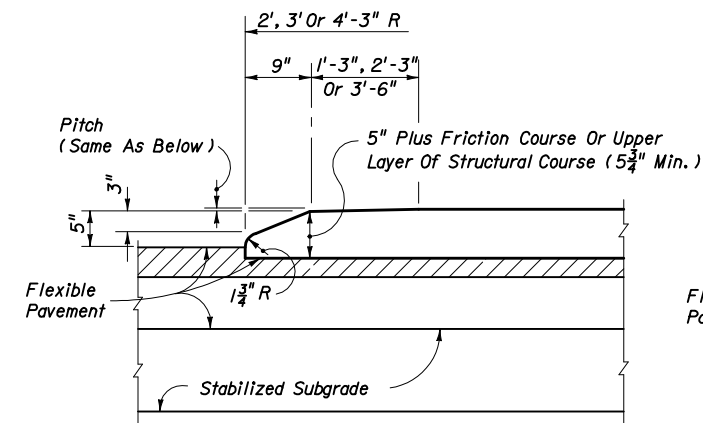


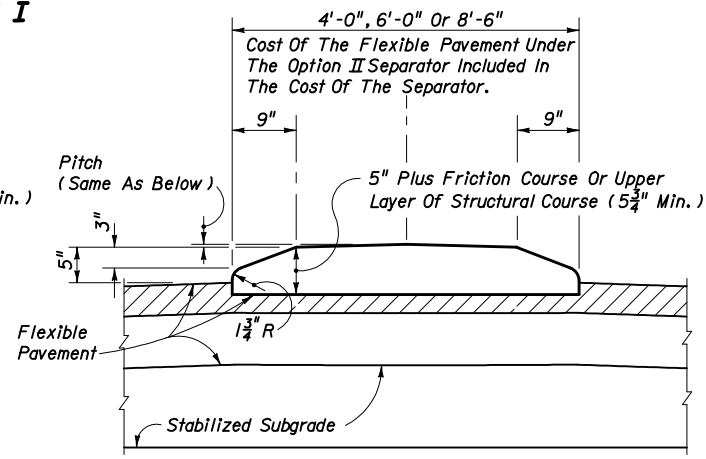
LONGITUDINAL SECTION (NOSE)

TRANSVERSE SECTION

**OPTION I**

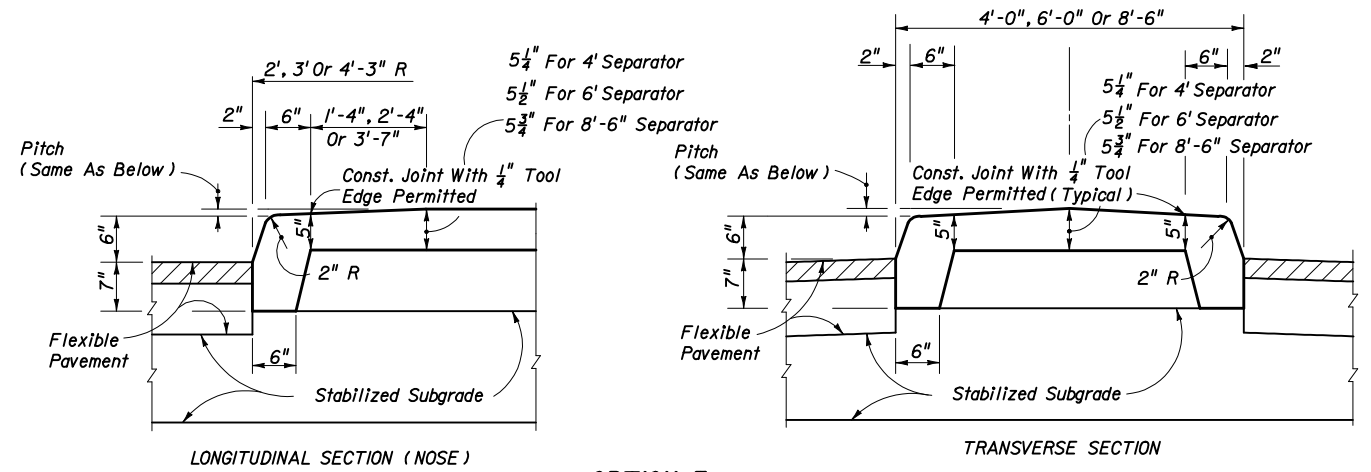


LONGITUDINAL SECTION (NOSE)



TRANSVERSE SECTION

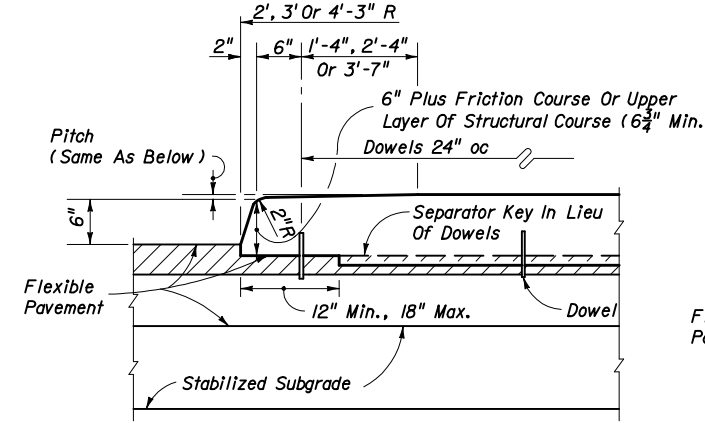
**OPTION II**  
**TYPE I CONCRETE TRAFFIC SEPARATOR**



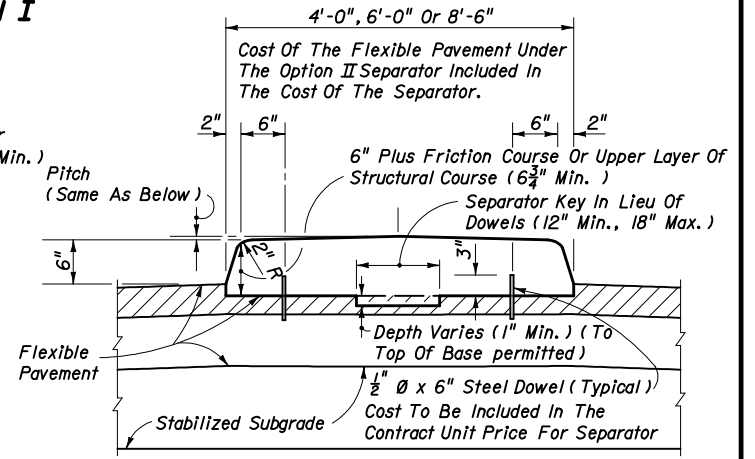
LONGITUDINAL SECTION (NOSE)

TRANSVERSE SECTION

**OPTION I**

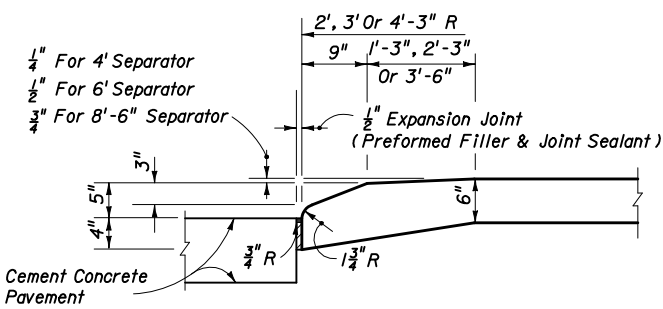


LONGITUDINAL SECTION (NOSE)

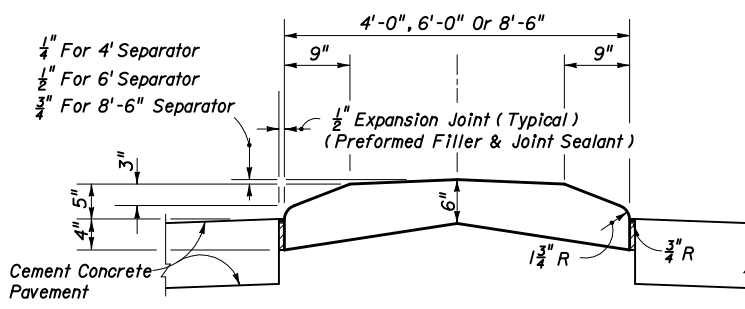


TRANSVERSE SECTION

**OPTION II**  
**TYPE IV CONCRETE TRAFFIC SEPARATOR**

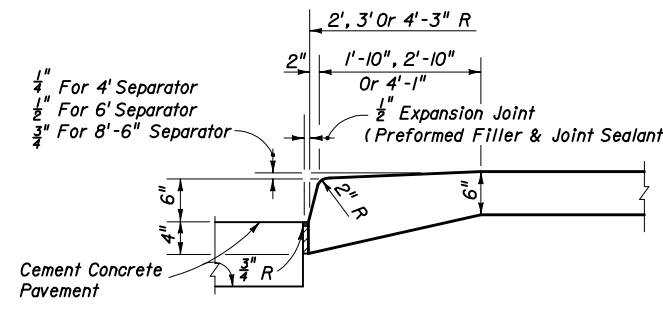


LONGITUDINAL SECTION (NOSE)

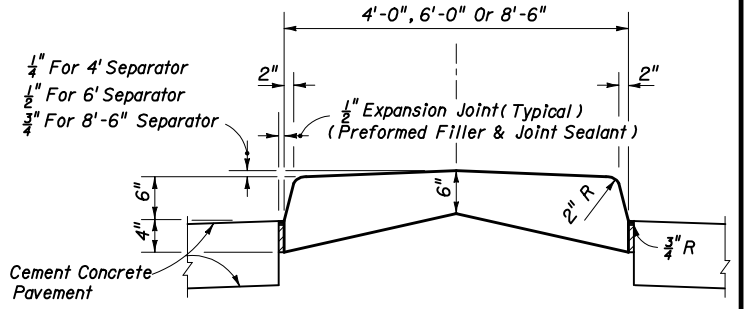


TRANSVERSE SECTION

**TYPE II CONCRETE TRAFFIC SEPARATOR**



LONGITUDINAL SECTION (NOSE)



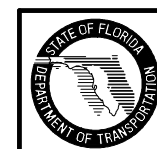
TRANSVERSE SECTION

**TYPE V CONCRETE TRAFFIC SEPARATOR**

**ROADWAY INSTALLATIONS**

**NOTES**

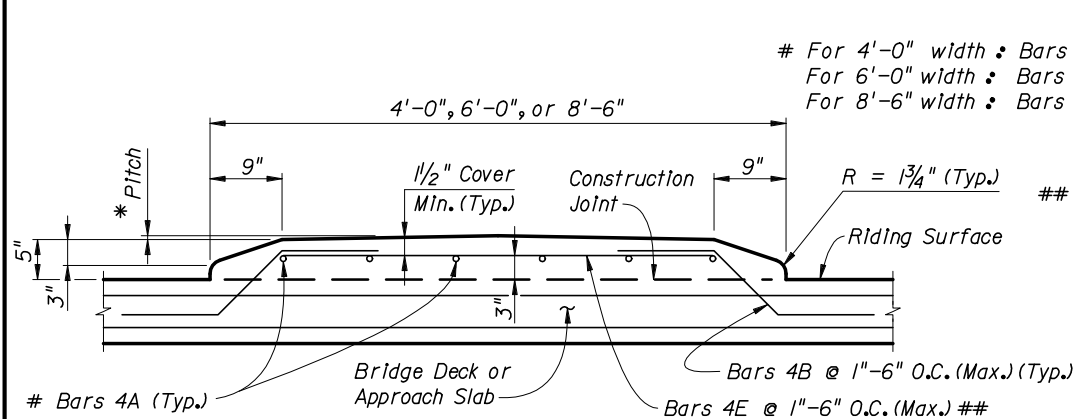
- Separators Type I and IV are to be used with flexible pavement. Separators Types II and V are to be used with rigid pavement.
- Either Option I or Option II may be used for Types I and IV separators except when a specific option is called for in the plans.
- For all separators provide 1/8" - 1/4" contraction joints at 10' centers (max.). Contraction joints adjacent to concrete pavement on tangents and flat curves are to match the pavement joints, with intermediate joints not to exceed 10' centers.
- Separators having widths of 4', 6' or 8'-6" shall be paid for under the contract unit price for Concrete Traffic Separator (Type \_\_\_) (\_\_\_' Wide) LF. Separators having widths other than 4', 6' or 8'-6" shall be detailed in the plans as special separators and paid for under the contract unit price for Concrete Traffic Separator (Special) SY.



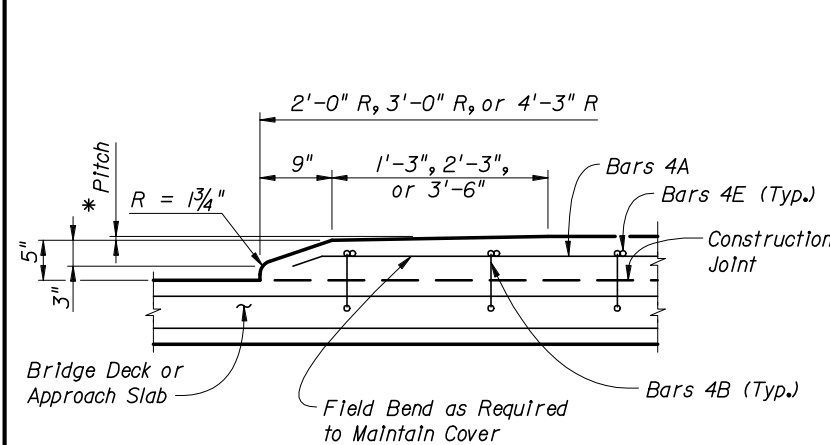
2006 FDOT Design Standards

**TRAFFIC SEPARATORS**

|               |           |
|---------------|-----------|
| Last Revision | Sheet No. |
| 07/01/05      | 1 of 3    |
| Index No.     |           |
| 302           |           |

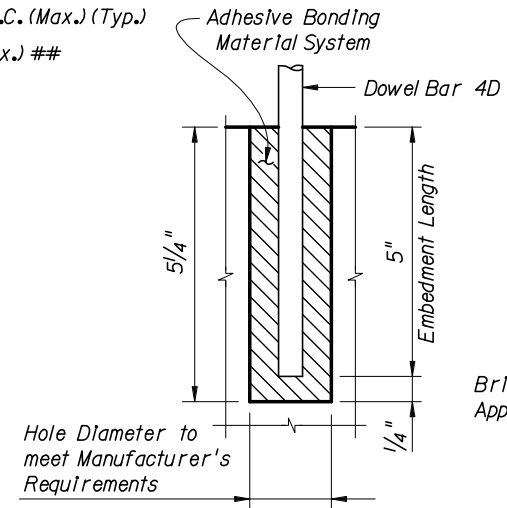


**TYPICAL SECTION THRU TRAFFIC SEPARATOR (Bridge Deck Shown, Approach Slab Similar)**

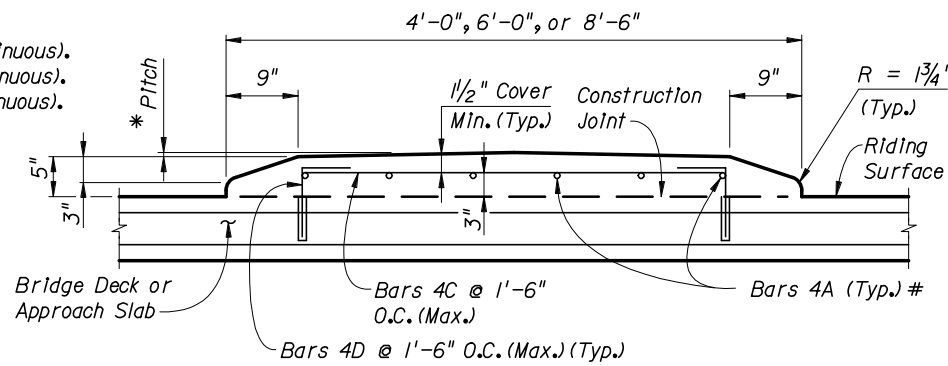


**\*\*\* LONGITUDINAL SECTION THRU TRAFFIC SEPARATOR AT NOSE (Bridge Deck Shown, Approach Slab Similar)**

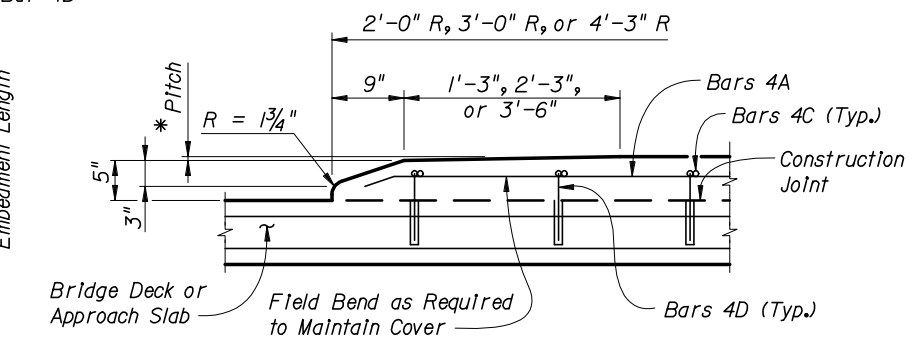
## At the Contractor's option a one piece bar may be substituted for Bars 4B and 4E.



**\*\* DOWEL DETAIL**



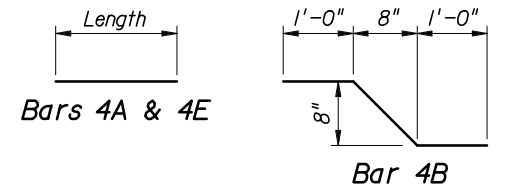
**TYPICAL SECTION THRU TRAFFIC SEPARATOR (Bridge Deck Shown, Approach Slab Similar)**



**\*\*\* LONGITUDINAL SECTION THRU TRAFFIC SEPARATOR AT NOSE (Bridge Deck Shown, Approach Slab Similar)**

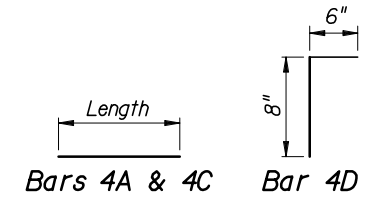
**Dowel Notes:**  
 1. Shift Dowel Holes to clear if existing reinforcement is encountered.  
 2. Holes for Dowel Bars shall be thoroughly cleaned with compressed air prior to placing the adhesive bonding material & dowels. The adhesive bonding material system used shall be in accordance with Sections 416 and 937 of the Specifications.

**CONVENTIONAL REINFORCING STEEL BENDING DIAGRAMS**



**Notes:**  
 Length of Bars 4E is 2'-5" for 4'-0" Separator.  
 Length of Bars 4E is 4'-5" for 6'-0" Separator.  
 Length of Bars 4E is 6'-11" for 8'-6" Separator.

**REINFORCING STEEL OPTION A**



**Notes:**  
 Length of Bars 4C is 2'-4 1/2" for 4'-0" Separator.  
 Length of Bars 4C is 4'-4 1/2" for 6'-0" Separator.  
 Length of Bars 4C is 6'-10 1/2" for 8'-6" Separator.

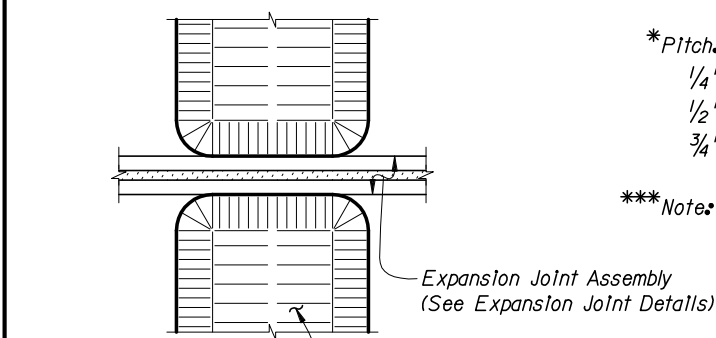
**REINFORCING STEEL OPTION B**

**REINFORCING STEEL NOTES:**

- All dimensions are out to out.
- The 8" vertical dimension shown for Bars 4B and 4D are based on a slab 8 1/2" thick or greater without a wearing surface. If slab thickness is less than 8 1/2", decrease this dimension by an amount equal to the difference in thickness. If a wearing surface is to be provided, increase this dimension by an amount equal to the wearing surface thickness.

**REINFORCING STEEL OPTION A**

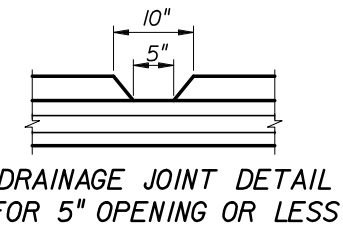
**REINFORCING STEEL OPTION B (NOT PERMITTED ON BRIDGE DECKS WITH PRESTRESSING STEEL)**



**DETAIL AT EXPANSION JOINTS (Strip Seal Shown, Other Joint Types Similar)**

**Note:** See Structures Plans, Superstructure Sheets for actual dimensions and joint orientation. Treatment of separators on straight bridges shown. For treatment of separators on skewed bridges see Index No. 490.

**NOTES:**  
**CONCRETE:** See General Notes In Structures Plans.  
**REINFORCING STEEL:** Reinforcing Steel shall be ASTM A615 Grade 60.  
**PAYMENT:** Separators having widths of 4'-0", 6'-0", and 8'-6" shall be paid under the contract unit price for Traffic Separator Concrete (Type II) (1' Wide), LF. Separators having widths other than 4'-0", 6'-0", or 8'-6" shall be detailed in the plans as special separators and paid under the contract unit price for Traffic Separator Concrete (Special), S.Y.  
**TRAFFIC SEPARATOR CONSTRUCTION:** The Contractor may construct the separator by the use of stationary removable forms or by the use of slip forms without altering the separator dimensions shown above.  
**1/2" V-GROOVES:** For all separators provide 1/2" V-Grooves at 30'-0" centers (max.) equally spaced between expansion joints.



**DRAINAGE JOINT DETAIL FOR 5" OPENING OR LESS**

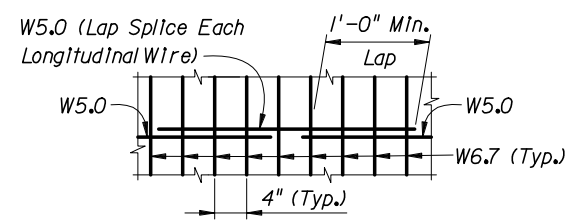
**ESTIMATED TRAFFIC SEPARATOR QUANTITIES**

**CONCRETE:**  
**CONSTANT WIDTH OF SEPARATOR:**  
 4'-0" Width - 0.056 CY per Ft.  
 6'-0" Width - 0.089 CY per Ft.  
 8'-6" Width - 0.132 CY per Ft.  
**NOSE:**  
 4'-0" Width - 0.080 CY  
 6'-0" Width - 0.193 CY  
 8'-6" Width - 0.403 CY

**REINFORCING STEEL:**  
 (All quantities are based on an 8 1/2" slab.)  
**OPTION A:**  
 4'-0" Width - 6.37 lbs. per Ft.  
 6'-0" Width - 8.60 lbs. per Ft.  
 8'-6" Width - 11.05 lbs. per Ft.  
**OPTION B:**  
 4'-0" Width - 4.77 lbs. per Ft.  
 6'-0" Width - 7.00 lbs. per Ft.  
 8'-6" Width - 9.45 lbs. per Ft.

**ALTERNATE REINFORCING STEEL DETAILS (WELDED WIRE FABRIC)**

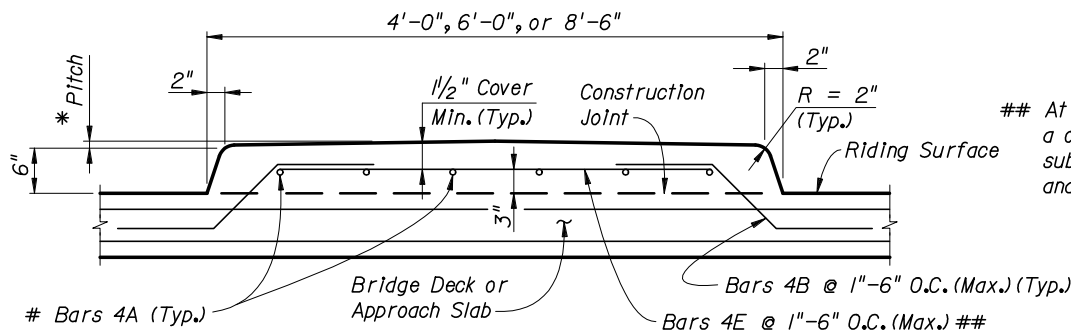
**OPTION A:** Use Welded Wire Fabric 3 x 4 - W5.0 x W6.7 as required by plans in place of Bars 4A, 4B and 4E. Bend the Welded Wire Fabric to the dimensions of Bar 4B shown in the Bending Diagram for Reinforcing Steel Option A.  
**OPTION B:** Use Welded Wire Fabric 3 x 4 - W5.0 x W6.7 as required by plans in place of Bars 4A and 4C shown in Reinforcing Steel Option B.  
**Note:** Welded Wire Fabric shall conform to ASTM A185.



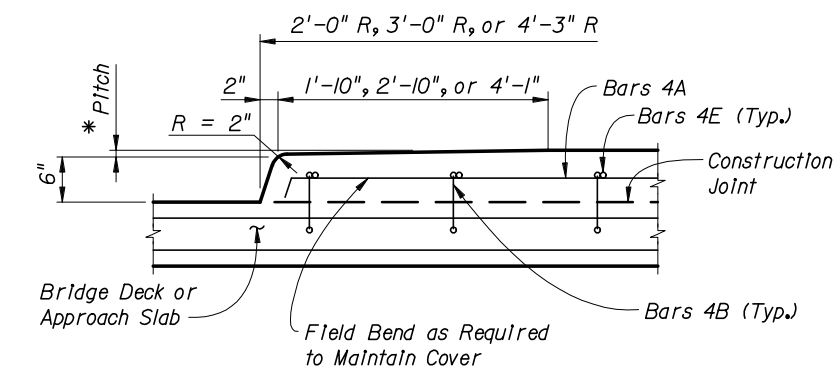
**SPLICE DETAIL (Between WWF 3 x 4 - W5.0 x W6.7 Sections)**

**BRIDGE INSTALLATIONS - TYPE "E" CURB**

# For 4'-0" width : Bars 4A @ 3 equal spaces (continuous).  
 For 6'-0" width : Bars 4A @ 5 equal spaces (continuous).  
 For 8'-6" width : Bars 4A @ 7 equal spaces (continuous).

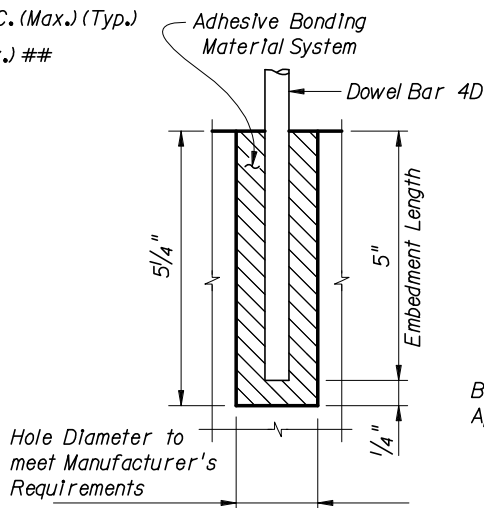


TYPICAL SECTION THRU TRAFFIC SEPARATOR  
 (Bridge Deck Shown, Approach Slab Similar)



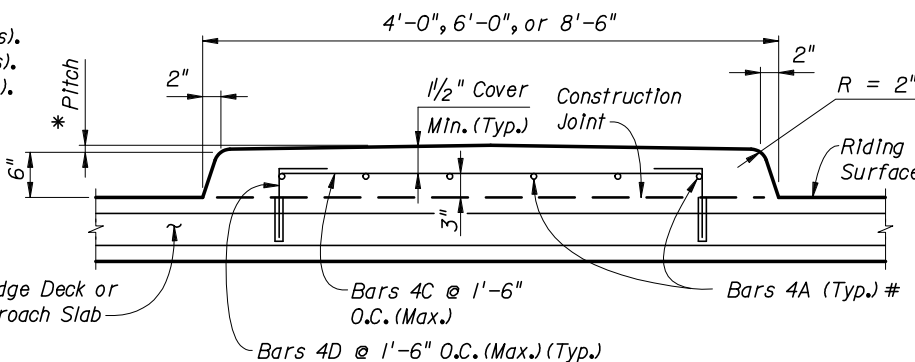
\*\*\* LONGITUDINAL SECTION THRU TRAFFIC SEPARATOR AT NOSE  
 (Bridge Deck Shown, Approach Slab Similar)

## At the Contractor's option a one piece bar may be substituted for Bars 4B and 4E.

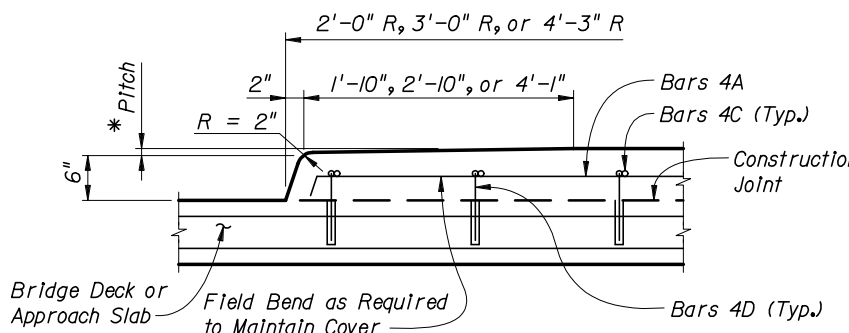


\*\* DOWEL DETAIL

\*\* Dowel Installation:  
 Drill holes to depth shown and install dowels in accordance with Sections 416 and 937 of the Specifications.



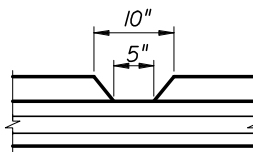
TYPICAL SECTION THRU TRAFFIC SEPARATOR  
 (Bridge Deck Shown, Approach Slab Similar)



\*\*\* LONGITUDINAL SECTION THRU TRAFFIC SEPARATOR AT NOSE  
 (Bridge Deck Shown, Approach Slab Similar)

Dowel Notes:  
 1. Shift Dowel Holes to clear if existing reinforcement is encountered.  
 2. Holes for Dowel Bars shall be thoroughly cleaned with compressed air prior to placing the adhesive bonding material & dowels. The adhesive bonding material system used shall be in accordance with Sections 416 and 937 of the Specifications.

REINFORCING STEEL OPTION B (NOT PERMITTED ON BRIDGE DECKS WITH PRESTRESSING STEEL)



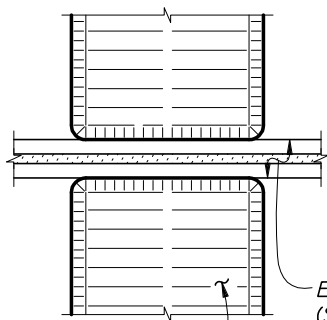
DRAINAGE JOINT DETAIL FOR 5" OPENING OR LESS

See Structures Plans, Superstructure Sheets for location(s) of drainage joints. Locations for drainage joints shall be limited to the constant width section of separator.

NOTES:  
 CONCRETE: See General Notes In Structures Plans.  
 REINFORCING STEEL: Reinforcing Steel shall be ASTM A615 Grade 60.  
 PAYMENT: Separators having widths of 4'-0", 6'-0", and 8'-6" shall be paid under the contract unit price for Traffic Separator Concrete (Type V) (1' Wide), LF. Separators having widths other than 4'-0", 6'-0", or 8'-6" shall be detailed in the plans as special separators and paid under the contract unit price for Traffic Separator Concrete (Special), S.Y.  
 TRAFFIC SEPARATOR CONSTRUCTION: The Contractor may construct the separator by the use of stationary removable forms or by the use of slip forms without altering the separator dimensions shown above.  
 1/2" V-GROOVES: For all separators provide 1/2" V-Grooves at 30'-0" centers (max.) equally spaced between expansion joints.

BRIDGE INSTALLATIONS - TYPE "F" CURB

REINFORCING STEEL OPTION A



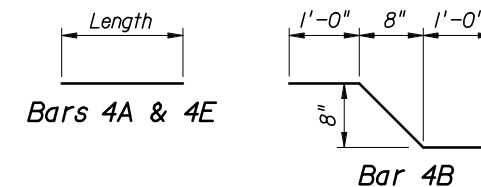
DETAIL AT EXPANSION JOINTS  
 (Strip Seal Shown, Other Joint Types Similar)

Note: See Structures Plans, Superstructure Sheets for actual dimensions and joint orientation. Treatment of separators on straight bridges shown. For treatment of separators on skewed bridges see Index No. 490.

\* Pitch:  
 1/4" For 4'-0" Separator  
 1/2" For 6'-0" Separator  
 3/4" For 8'-6" Separator

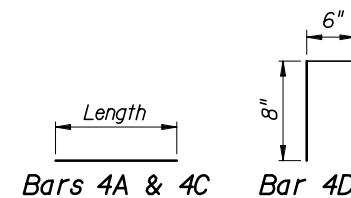
\*\*\* Note: Field bend and cut rebar required to maintain cover.

CONVENTIONAL REINFORCING STEEL BENDING DIAGRAMS



Notes:  
 Length of Bars 4E is 2'-5" for 4'-0" Separator.  
 Length of Bars 4E is 4'-5" for 6'-0" Separator.  
 Length of Bars 4E is 6'-11" for 8'-6" Separator.

REINFORCING STEEL OPTION A



Notes:  
 Length of Bars 4C is 2'-4 1/2" for 4'-0" Separator.  
 Length of Bars 4C is 4'-4 1/2" for 6'-0" Separator.  
 Length of Bars 4C is 6'-10 1/2" for 8'-6" Separator.

REINFORCING STEEL OPTION B

REINFORCING STEEL NOTES:

- All dimensions are out to out.
- The 8" vertical dimension shown for Bars 4B and 4D are based on a slab 8 1/2" thick or greater without a wearing surface. If slab thickness is less than 8 1/2", decrease this dimension by an amount equal to the difference in thickness. If a wearing surface is to be provided, increase this dimension by an amount equal to the wearing surface thickness.

ESTIMATED TRAFFIC SEPARATOR QUANTITIES

CONCRETE:

CONSTANT WIDTH OF SEPARATOR:  
 4'-0" Width - 0.072 CY per Ft.  
 6'-0" Width - 0.112 CY per Ft.  
 8'-6" Width - 0.164 CY per Ft.

NOSE:

4'-0" Width - 0.109 CY  
 6'-0" Width - 0.257 CY  
 8'-6" Width - 0.536 CY

REINFORCING STEEL:

(All quantities are based on an 8 1/2" slab.)

OPTION A:

4'-0" Width - 6.37 lbs. per Ft.  
 6'-0" Width - 8.60 lbs. per Ft.  
 8'-6" Width - 11.05 lbs. per Ft.

OPTION B:

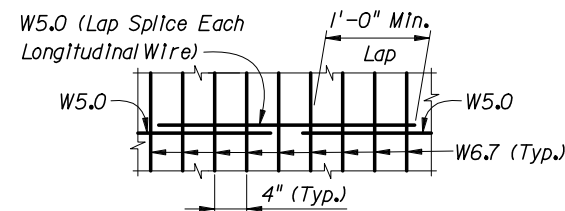
4'-0" Width - 4.77 lbs. per Ft.  
 6'-0" Width - 7.00 lbs. per Ft.  
 8'-6" Width - 9.45 lbs. per Ft.

ALTERNATE REINFORCING STEEL DETAILS (WELDED WIRE FABRIC)

OPTION A: Use Welded Wire Fabric 3 x 4 - W5.0 x W6.7 as required by plans in place of Bars 4A, 4B and 4E. Bend the Welded Wire Fabric to the dimensions of Bar 4B shown in the Bending Diagram for Reinforcing Steel Option A.

OPTION B: Use Welded Wire Fabric 3 x 4 - W5.0 x W6.7 as required by plans in place of Bars 4A and 4C shown in Reinforcing Steel Option B.

Note: Welded Wire Fabric shall conform to ASTM A185.



SPLICE DETAIL  
 (Between WWF 3 x 4 - W5.0 x W6.7 Sections)



2006 FDOT Design Standards

TRAFFIC SEPARATORS

Last Revision: 07/01/05  
 Sheet No.: 3 of 3  
 Index No.: 302