

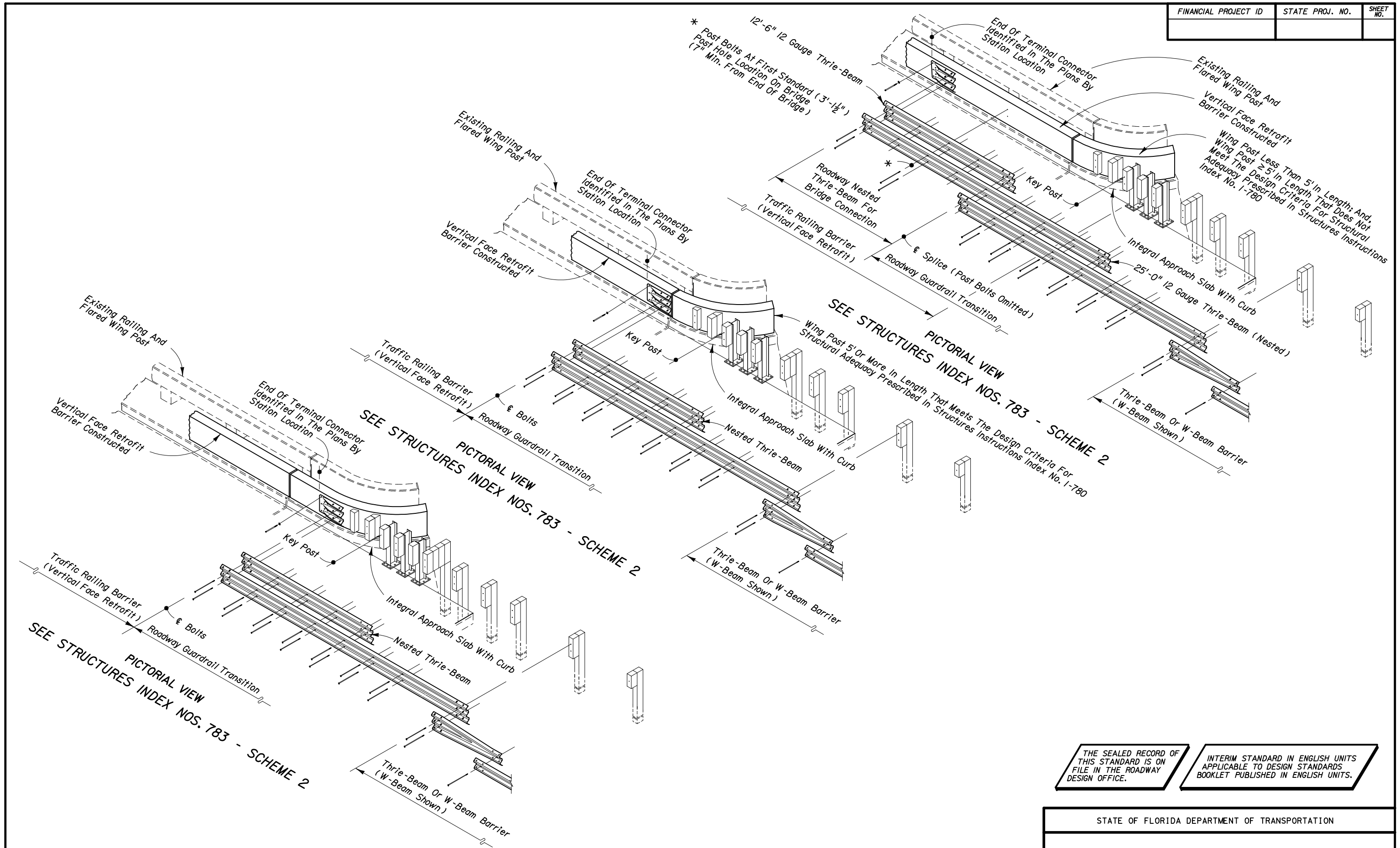
**PICTORIAL VIEWS OF GUARDRAIL APPROACH TRANSITIONS AND CONNECTIONS
FOR BRIDGE TRAFFIC RAILING BARRIER (VERTICAL FACE RETROFIT)
DETAIL E**

Date: 12-31-02

THE SEALED RECORD OF THIS STANDARD IS ON FILE IN THE ROADWAY DESIGN OFFICE.

INTERIM STANDARD IN ENGLISH UNITS APPLICABLE TO DESIGN STANDARDS BOOKLET PUBLISHED IN ENGLISH UNITS.

STATE OF FLORIDA DEPARTMENT OF TRANSPORTATION		
GUARDRAIL		
INTERIM STANDARD	APPROVED BY	<i>Jamell D. Milk</i> Roadway Design Engineer
SHEET NOS. 1 - 25 OF 25 ARE A SUPPLEMENT TO INDEX NO. 400 (SHEET 13 OF 32) OF THE DESIGN STANDARDS BOOKLET DATED JANUARY 2002.	REVISION NO.	SHEET NO. INDEX NO.
		18 of 25 0400



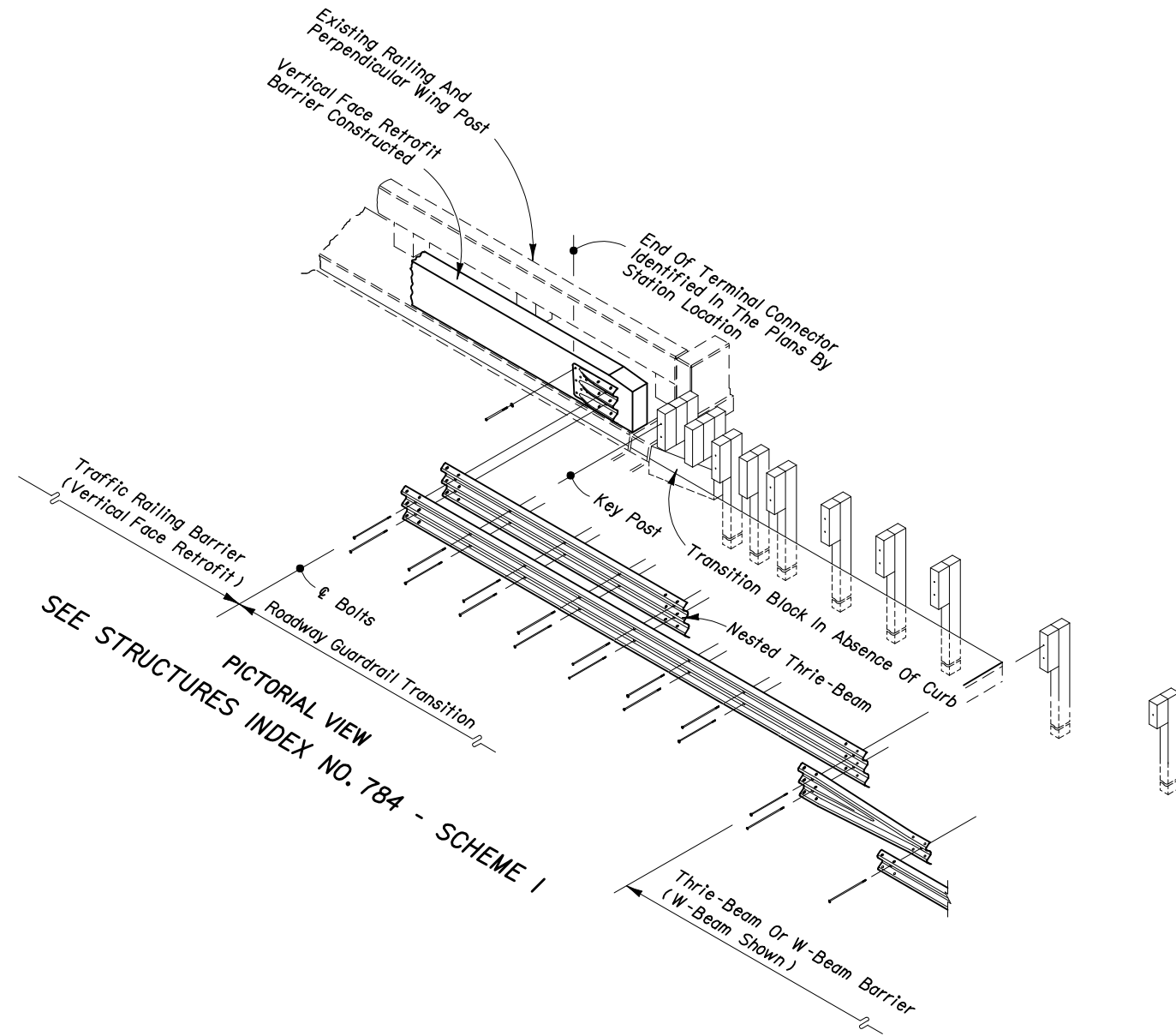
**PICTORIAL VIEWS OF GUARDRAIL APPROACH TRANSITIONS AND CONNECTIONS
FOR BRIDGE TRAFFIC RAILING BARRIER (VERTICAL FACE RETROFIT)
DETAIL E**

Date: 12-31-02

THE SEALED RECORD OF THIS STANDARD IS ON FILE IN THE ROADWAY DESIGN OFFICE.

INTERIM STANDARD IN ENGLISH UNITS APPLICABLE TO DESIGN STANDARDS BOOKLET PUBLISHED IN ENGLISH UNITS.

STATE OF FLORIDA DEPARTMENT OF TRANSPORTATION			
GUARDRAIL			
INTERIM STANDARD		APPROVED BY <i>Jamal D. Milk</i> Roadway Design Engineer	
SHEET NOS. 1 - 25 OF 25 ARE A SUPPLEMENT TO INDEX NO. 400 (SHEET 13 OF 32) OF THE DESIGN STANDARDS BOOKLET DATED JANUARY 2002.			
REVISION NO.	SHEET NO.	INDEX NO.	
	19 of 25	0400	



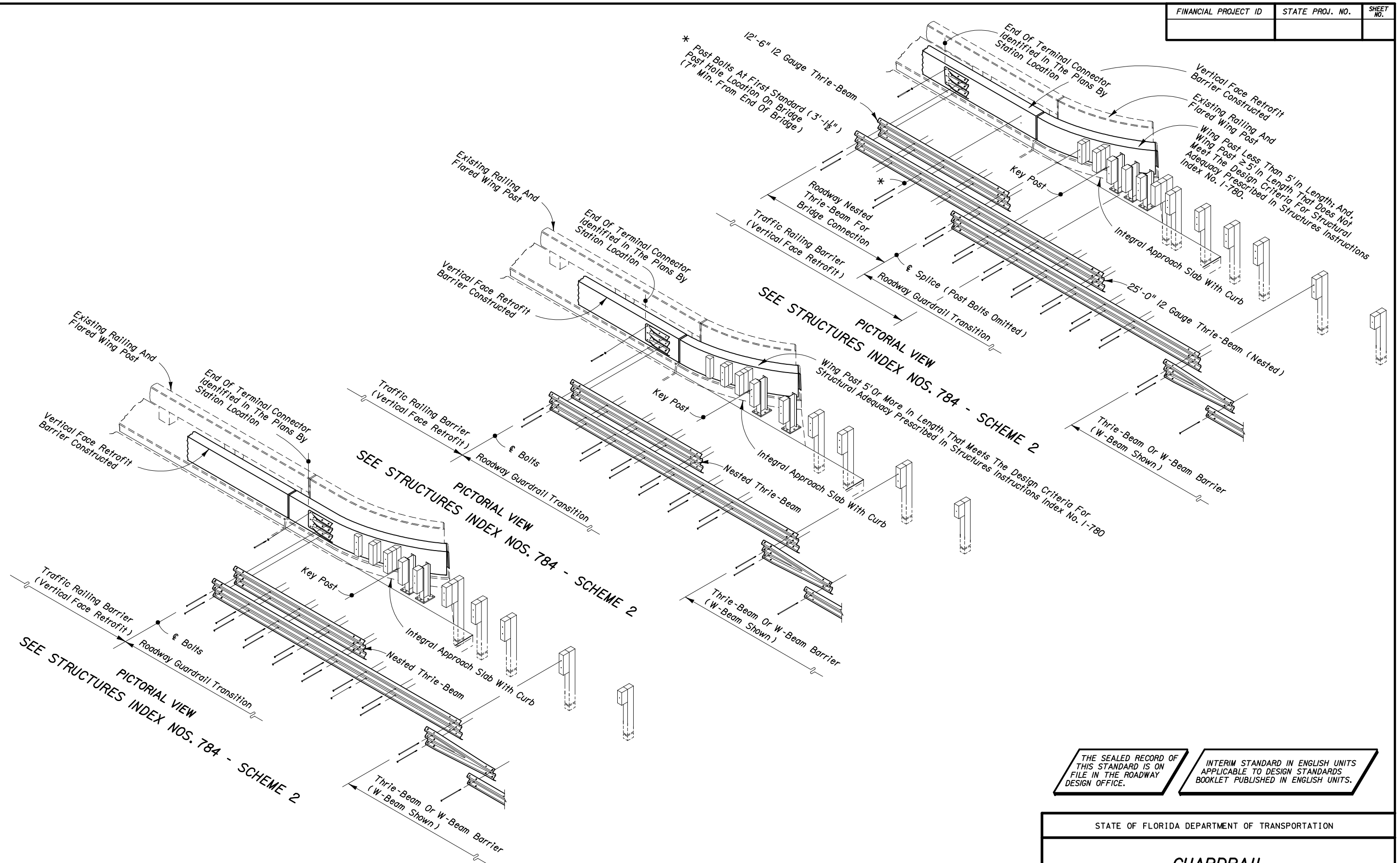
**PICTORIAL VIEWS OF GUARDRAIL APPROACH TRANSITIONS AND CONNECTIONS
FOR BRIDGE TRAFFIC RAILING BARRIER (VERTICAL FACE RETROFIT)
DETAIL E**

Date: 12-31-02

THE SEALED RECORD OF THIS STANDARD IS ON FILE IN THE ROADWAY DESIGN OFFICE.

INTERIM STANDARD IN ENGLISH UNITS APPLICABLE TO DESIGN STANDARDS BOOKLET PUBLISHED IN ENGLISH UNITS.

STATE OF FLORIDA DEPARTMENT OF TRANSPORTATION		
GUARDRAIL		
INTERIM STANDARD	APPROVED BY <i>Lama D. Milk</i> Roadway Design Engineer	
SHEET NOS. 1 - 25 OF 25 ARE A SUPPLEMENT TO INDEX NO. 400 (SHEET 13 OF 32) OF THE DESIGN STANDARDS, BOOKLET DATED JANUARY 2002.	REVISION NO.	INDEX NO.
	20 of 25	0400



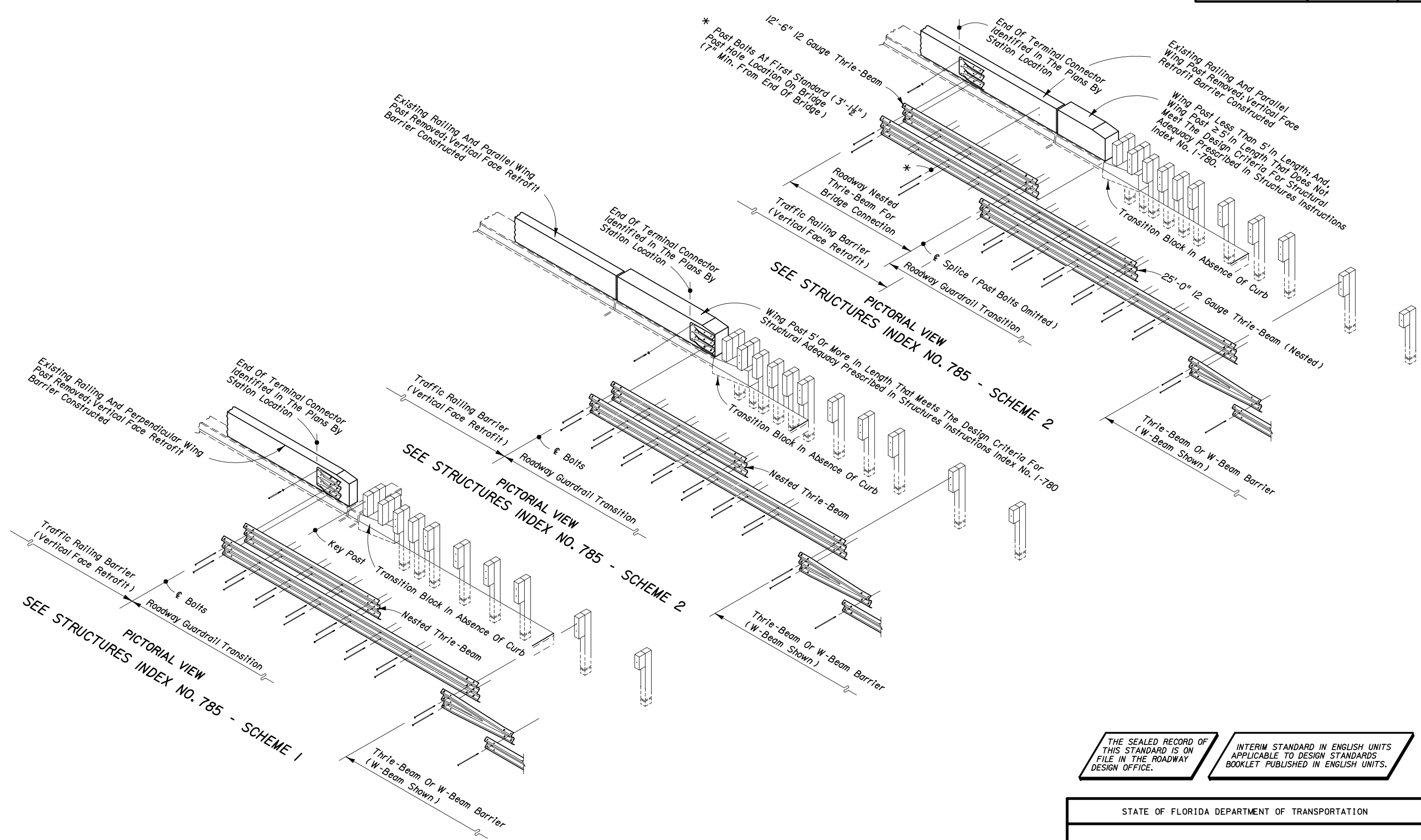
**PICTORIAL VIEWS OF GUARDRAIL APPROACH TRANSITIONS AND CONNECTIONS
FOR BRIDGE TRAFFIC RAILING BARRIER (VERTICAL FACE RETROFIT)
DETAIL E**

Date: 12-31-02

THE SEALED RECORD OF THIS STANDARD IS ON FILE IN THE ROADWAY DESIGN OFFICE.

INTERIM STANDARD IN ENGLISH UNITS APPLICABLE TO DESIGN STANDARDS BOOKLET PUBLISHED IN ENGLISH UNITS.

STATE OF FLORIDA DEPARTMENT OF TRANSPORTATION			
GUARDRAIL			
INTERIM STANDARD		APPROVED BY <i>Jared D. Mill</i> Roadway Design Engineer	
SHEET NOS. 1 - 25 OF 25 ARE A SUPPLEMENT TO INDEX NO. 400 (SHEET 13 OF 32) OF THE DESIGN STANDARDS BOOKLET DATED JANUARY 2002.			
REVISION NO.	SHEET NO.	INDEX NO.	
	21 of 25	0400	



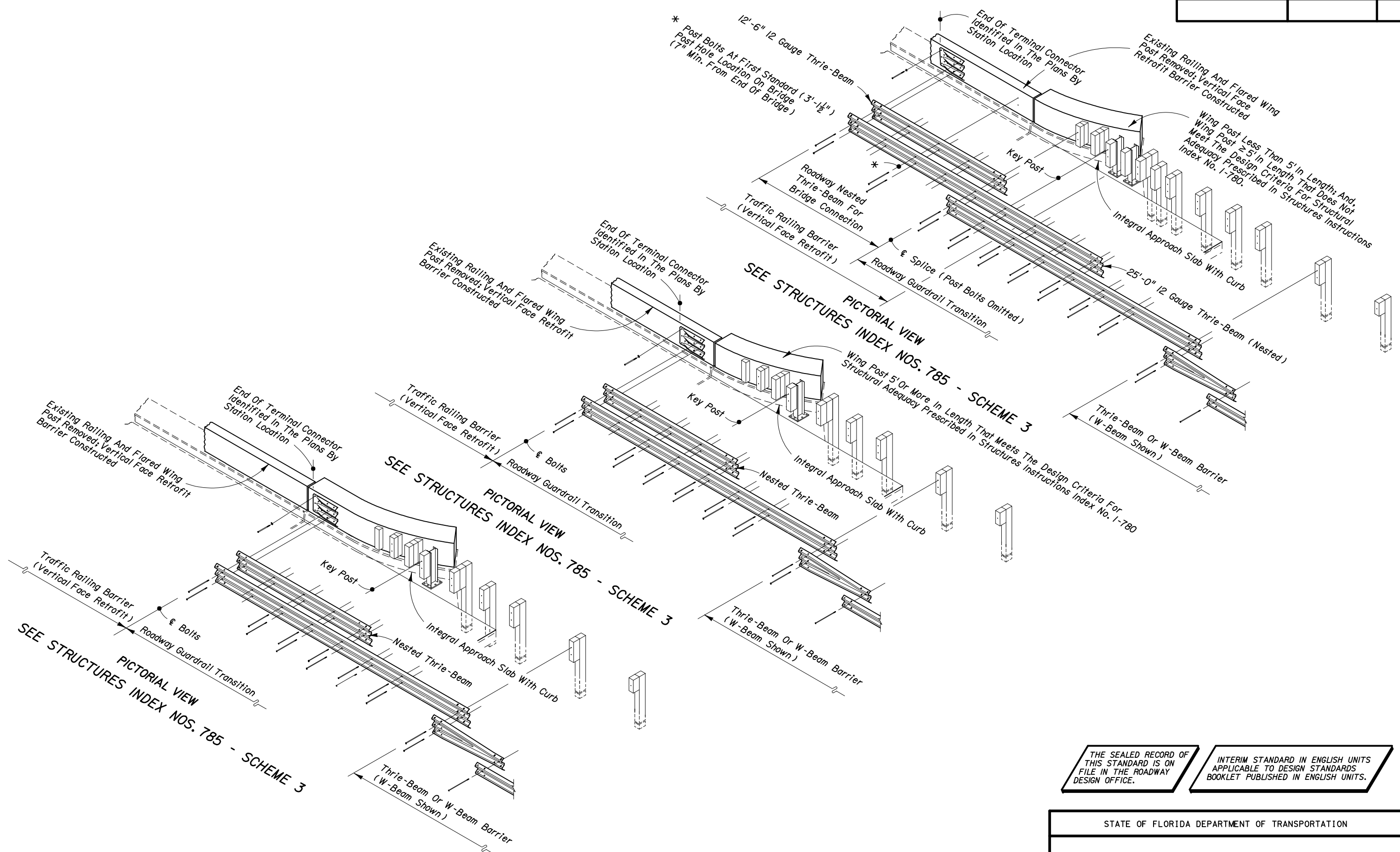
**PICTORIAL VIEWS OF GUARDRAIL APPROACH TRANSITIONS AND CONNECTIONS
FOR BRIDGE TRAFFIC RAILING BARRIER (VERTICAL FACE RETROFIT)
DETAIL E**

Date: 12-31-02

THE SEALED RECORD OF THIS STANDARD IS ON FILE IN THE ROADWAY DESIGN OFFICE.

INTERIM STANDARD IN ENGLISH UNITS APPLICABLE TO DESIGN STANDARDS BOOKLET PUBLISHED IN ENGLISH UNITS.

STATE OF FLORIDA DEPARTMENT OF TRANSPORTATION			
GUARDRAIL			
INTERIM STANDARD		APPROVED BY <i>Jared D. Mill</i> Roadway Design Engineer	
SHEET NOS. 1 - 25 OF 25 ARE A SUPPLEMENT TO INDEX NO. 400 (SHEET 13 OF 32) OF THE DESIGN STANDARDS BOOKLET DATED JANUARY 2002.			
REVISION NO.	SHEET NO.	INDEX NO.	
	23 of 25	0400	



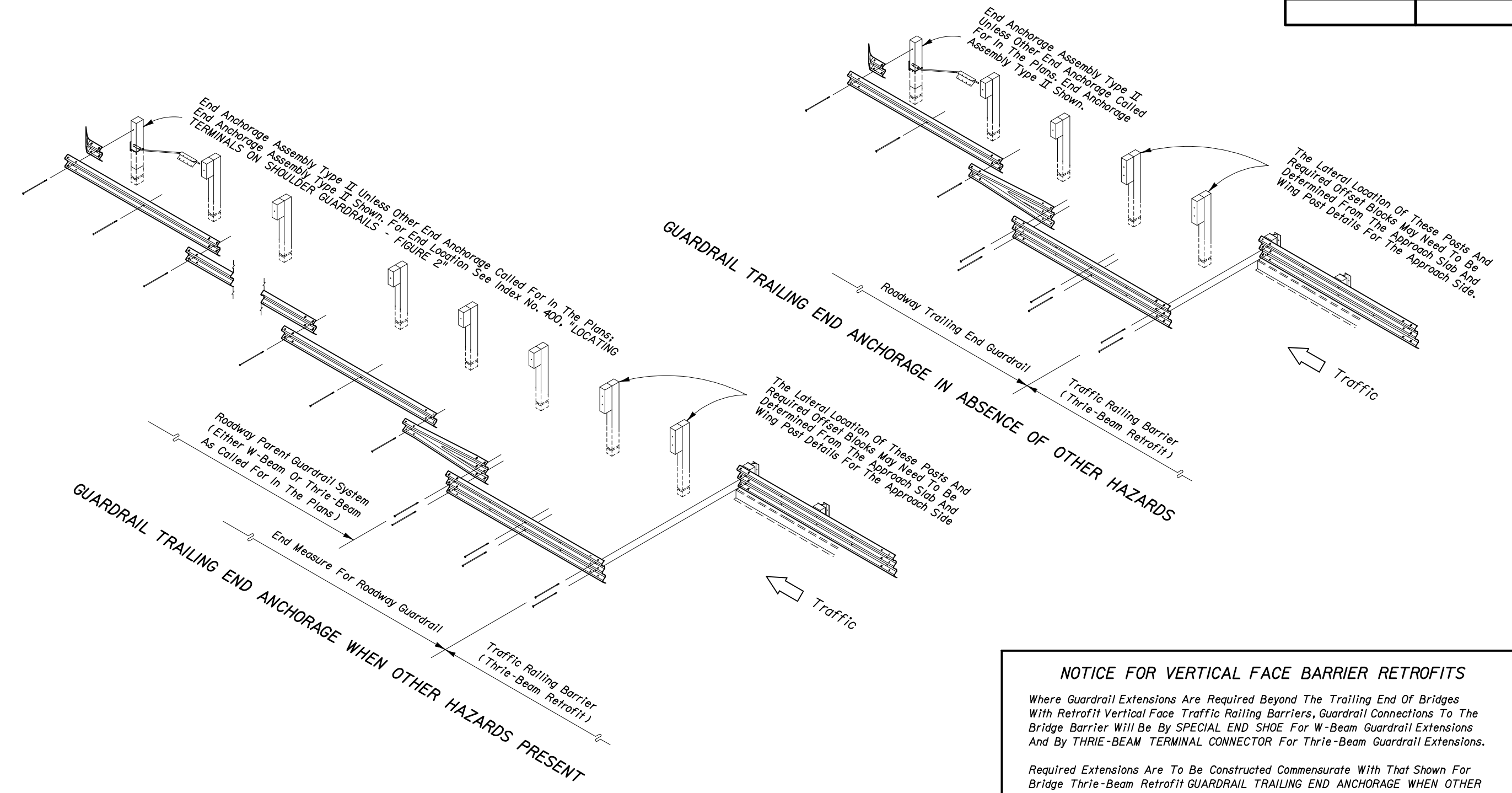
THE SEALED RECORD OF THIS STANDARD IS ON FILE IN THE ROADWAY DESIGN OFFICE.

INTERIM STANDARD IN ENGLISH UNITS APPLICABLE TO DESIGN STANDARDS BOOKLET PUBLISHED IN ENGLISH UNITS.

PICTORIAL VIEWS OF GUARDRAIL APPROACH TRANSITIONS AND CONNECTIONS FOR BRIDGE TRAFFIC RAILING BARRIER (VERTICAL FACE RETROFIT) **DETAIL E**

Date: 12-31-02

STATE OF FLORIDA DEPARTMENT OF TRANSPORTATION		
GUARDRAIL		
INTERIM STANDARD	APPROVED BY <i>Jamal D. Malik</i> Roadway Design Engineer	
SHEET NOS. 1 - 25 OF 25 ARE A SUPPLEMENT TO INDEX NO. 400 (SHEET 13 OF 32) OF THE DESIGN STANDARDS, BOOKLET DATED JANUARY 2002.	REVISION NO.	SHEET NO. INDEX NO.
		24 of 25 0400



GUARDRAIL TRAILING END ANCHORAGE FOR BRIDGE THRIE-BEAM RETROFIT

THRIE-BEAM RETROFIT NOTES

1. See Structures indexes for bridge thrie-beam traffic railing barrier retrofits.
2. Trailing end guardrail to be paid for under the contract unit price for the parent roadway guardrail; end measure includes length of end anchorage assembly; additional payment made for end anchorage assembly. No additional payment for connecting roadway thrie-beam to bridge thrie-beam retrofit.

NOTICE FOR VERTICAL FACE BARRIER RETROFITS

Where Guardrail Extensions Are Required Beyond The Trailing End Of Bridges With Retrofit Vertical Face Traffic Railing Barriers, Guardrail Connections To The Bridge Barrier Will Be By SPECIAL END SHOE For W-Beam Guardrail Extensions And By THRIE-BEAM TERMINAL CONNECTOR For Thrie-Beam Guardrail Extensions.

Required Extensions Are To Be Constructed Commensurate With That Shown For Bridge Thrie-Beam Retrofit GUARDRAIL TRAILING END ANCHORAGE WHEN OTHER HAZARDS PRESENT, Except Payment Will Be Made Under The Contract Unit Price For Guardrail Bridge Anchorage Assembly, EA., For Attaching The Thrie-Beam Terminal Connector To The Bridge Traffic Railing Barrier.

PICTORIAL VIEWS OF GUARDRAIL TRAILING END CONNECTIONS FOR BRIDGE TRAFFIC RAILING BARRIER RETROFITS

DETAIL E

Date: 12-31-02

THE SEALED RECORD OF THIS STANDARD IS ON FILE IN THE ROADWAY DESIGN OFFICE.

INTERIM STANDARD IN ENGLISH UNITS APPLICABLE TO DESIGN STANDARDS BOOKLET PUBLISHED IN ENGLISH UNITS.

STATE OF FLORIDA DEPARTMENT OF TRANSPORTATION		
GUARDRAIL		
INTERIM STANDARD	APPROVED BY <i>James D. Smith</i> Roadway Design Engineer	
SHEET NOS. 1 - 25 OF 25 ARE A SUPPLEMENT TO INDEX NO. 400 (SHEET 13 OF 32) OF THE DESIGN STANDARDS, BOOKLET DATED JANUARY 2002.	REVISION NO.	SHEET NO. 25 of 25
		INDEX NO. 0400