



Florida Department of Transportation

RICK SCOTT
GOVERNOR

605 Suwannee Street
Tallahassee, FL 32399-0450


ANANTH PRASAD, P.E.
SECRETARY

Mail Station 32

ROADWAY DESIGN BULLETIN 11-11

DATE: July 8, 2011

TO: District Directors of Transportation Development, District Directors of Operations, District Design Engineers, District Maintenance Engineers, District Traffic Operations Engineers, District Utilities Engineers/Administrators, Plans Preparation Manual Holders

FROM: David C. O'Hagan, P. E., State Roadway Design Engineer 

COPIES: Brian Blanchard, Duane Brautigam, Tim Lattner, Mark Wilson, Thomas Bane, and Chris Richter (FHWA)

SUBJECT: Accommodating Aboveground Fixed Utilities (AFUs)

BACKGROUND:

Rule Chapter 14-46.001, F.A.C "Utility Installation or Adjustment" and the Procedure 710-020-001-g "2010 UAM Utility Accommodation Manual" were incorporated into State Law on January 30, 2011 and were effective immediately. On February 2, 2010, FHWA approved the 2010 UAM as meeting current federal requirements. Consequently, the Plans Preparation Manual (PPM) is being revised for publication in January 2012 to include new instructions that comply with the Rule and Procedure.

REQUIREMENTS:

1. Until these new instructions are published, please use the attached flowcharts titled DESIGNER'S GUIDANCE FOR ABOVEGROUND FIXED UTILITIES (AFUs) when accommodating these roadside features such as utility poles.

2. The following revisions to the current PPM are necessary:

A. Chapter 2 – Design Geometrics and Criteria: Eliminate Table 2.11.3

~~Table 2.11.3 Horizontal Clearance for Utility Installations~~

ABOVE GROUND OBJECTS	See the <i>Utility Accommodation Manual (UAM)</i> , (Topic No. 710-020-001) for horizontal-clearance criteria for utilities. The <i>UAM</i> is available online at: http://www.dot.state.fl.us/rddesign/utilities/
-------------------------------------	---

B. Chapter 21 – Transportation Design for Livable Communities: Eliminate Table 21.2

~~Table 21.2 Horizontal Clearance to Utility Installations~~

ABOVE GROUND OBJECTS	See the <i>Utility Accommodation Manual (UAM)</i> , (Topic No. 710-020-001) for horizontal-clearance criteria for utilities. The <i>UAM</i> is available online at: http://www.dot.state.fl.us/rddesign/utilities/
-------------------------------------	---

C. Chapter 23 – Exceptions and Variations: Modify 4th paragraph 4 as follows:

23.3 Approval

Approval is required from the District Design Engineer or Turnpike Design Engineer for the following:

- Design Exceptions.
- Utility Exceptions.
- Design Variations.

D. Chapter 25 – Florida’s Design Criteria for Resurfacing, Restorations and Rehabilitation (RRR) of Streets and Highways: Eliminate Table 25.4.14.4 and Section 25.4.20.

~~Table 25.4.14.4 Horizontal Clearance for Utility Installations~~

ABOVE GROUND OBJECTS	See the <i>Utility Accommodation Manual (UAM)</i> , (Topic No. 710-020-001) for horizontal clearance criteria for utilities. The <i>UAM</i> is available online at: http://www.dot.state.fl.us/rddesign/utilities/
-------------------------------------	---

~~25.4.20 Utilities (Underground and Overhead)~~

Horizontal clearance criteria are given in ~~Table 25.4.14.4~~ and in the *Utility Accommodation Manual (UAM)*. Additional clearance criteria are found in the *UAM*.

IMPLEMENTATION:

These changes are effective immediately on all projects

CONTACTS:

If you have any questions, please contact:

Thomas Bane, P.E., State Utilities Engineer

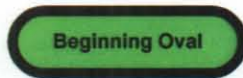
(850) 414-4379

thomas.bane@dot.state.fl.us

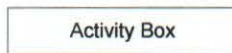
Designer Guidance

These flowcharts are to guide Designers and Utility Coordinators through key coordination activities for the installation and adjustment of Aboveground Fixed Utilities (AFUs) within various FDOT project types in accordance with the new State Laws and Federal Regulations that pertain to these roadside features. Please, contact the State Utilities Engineer, Thomas Bane, P.E., (850) 414-4379, thomas.bane@dot.state.fl.us with any questions.

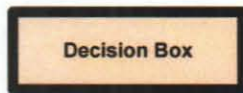
FLOWCHART LEGEND



The "Beginning Oval" indicates the beginning of all activities.



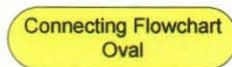
An "Activity Box" indicates activities to be performed



A "Decision Box" contains questions that must be answered either "YES" or "NO" to correctly proceed to the next activity.



A "Connecting Box" leads to a "Connecting Flowchart Oval" of the same color on a following page.

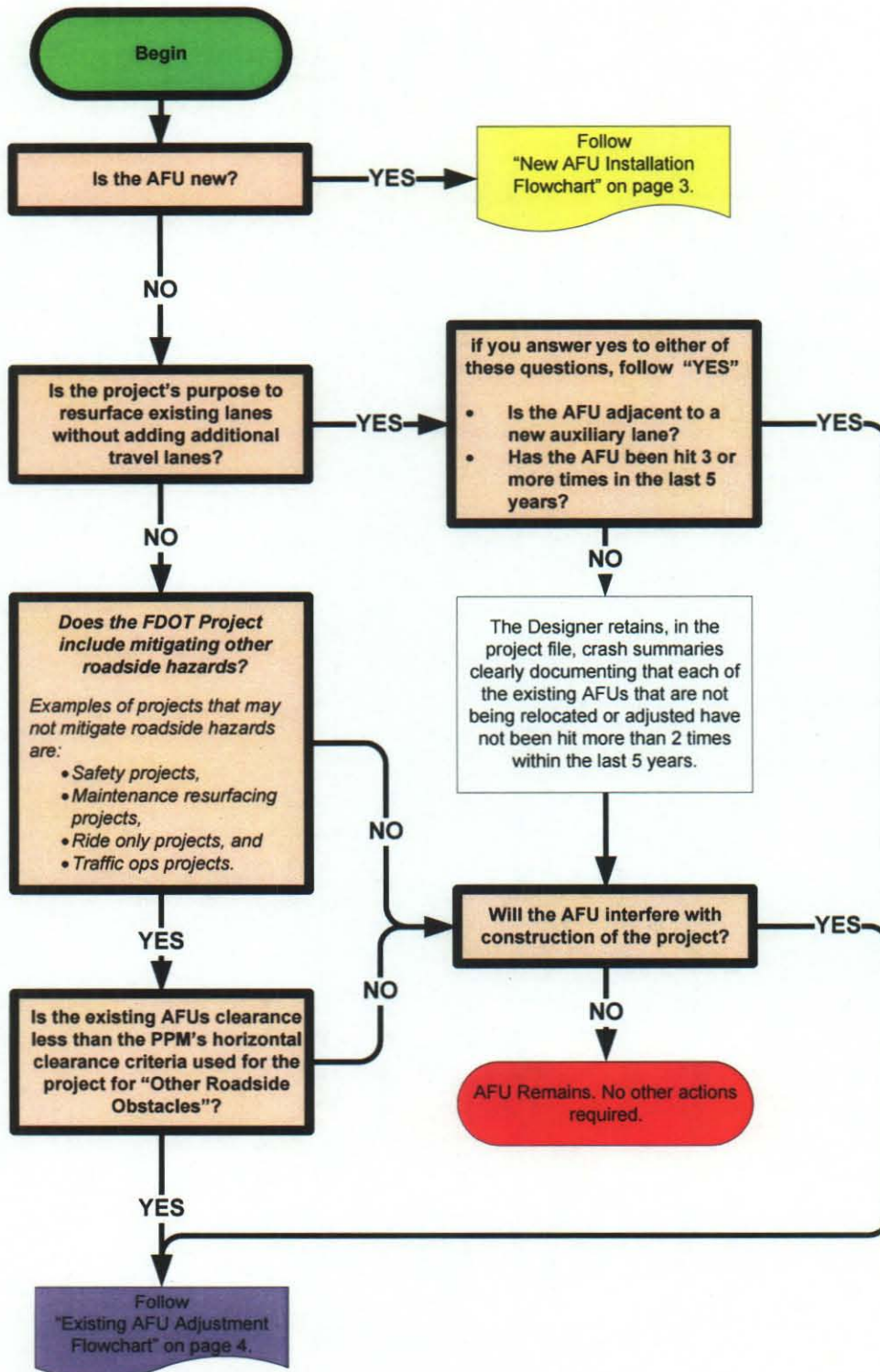


A "Connecting Flowchart Oval" indicate the beginning of other activities that flow from a "Connecting Box" of the same color on a preceding page.

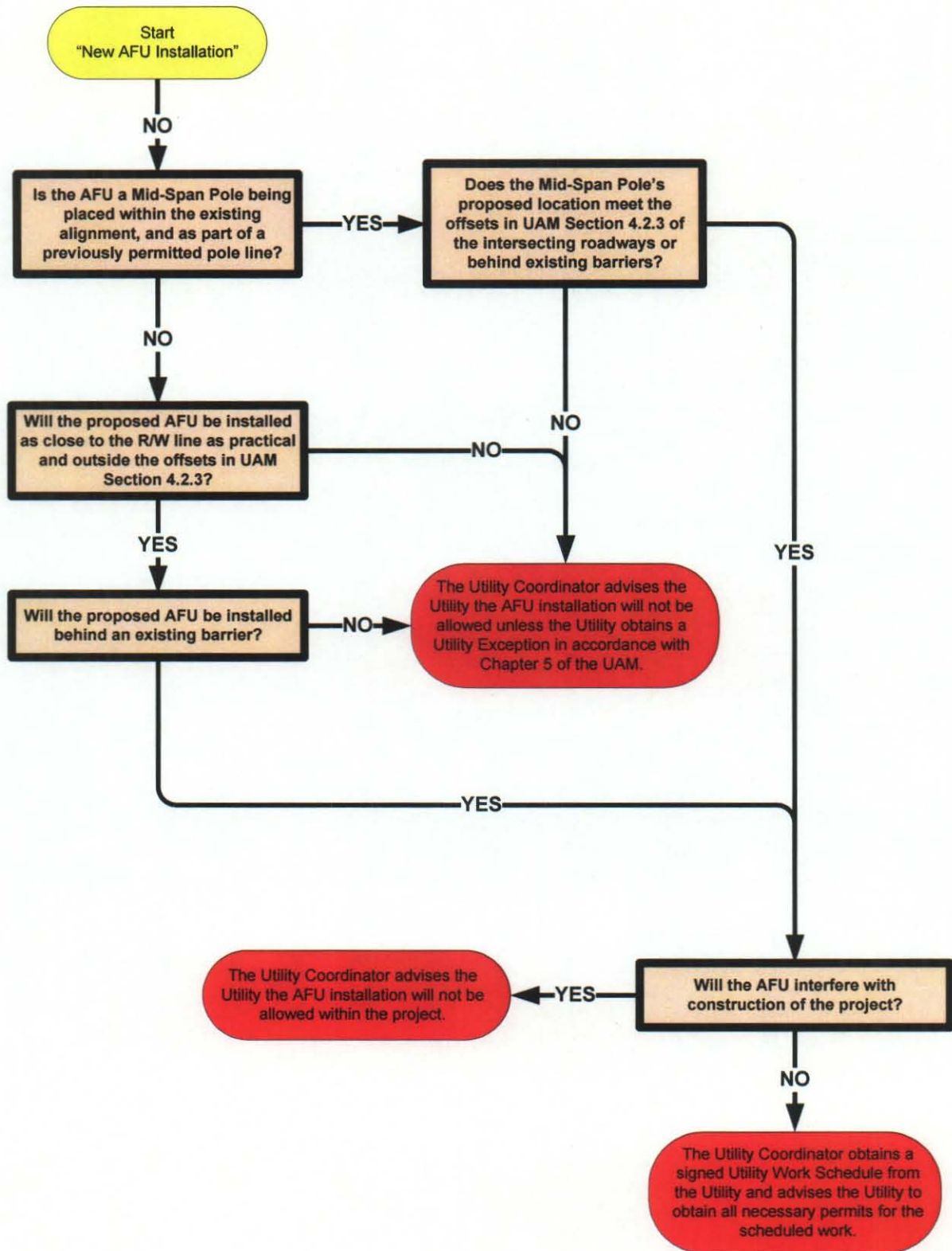


An "End Activities Oval" indicates the conclusion of all necessary activities.

DESIGNER'S GUIDANCE FOR ABOVEGROUND FIXED UTILITIES (AFUs)



New AFU Installation Flowchart



Existing AFU Adjustment Flowchart

