



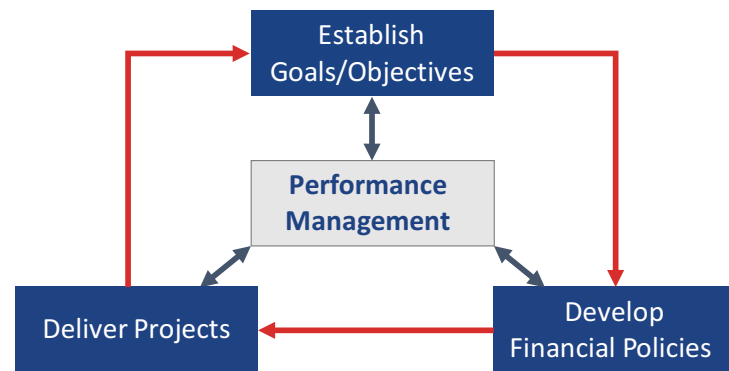
PERFORMANCE FRAMEWORK

WHAT are performance measures?

Performance measures are usually indicators of progress toward attaining a goal, objective, or target (a desired level of future performance). FDOT's Performance Management/Measurement Policy provides the basis and foundation for the department's approach.

WHY do we use them?

- FDOT uses performance measures to:
- Assess how well Florida's multimodal transportation system is functioning
 - Provide information to support and inform decision-making
 - Assess how effectively and efficiently transportation programs, projects and services are being delivered
 - Determine customer satisfaction levels
 - Demonstrate transparency and accountability to Florida's citizens and to foster collaboration with FDOT's transportation system stakeholders



As shown in this **Performance-Based Planning and Programming Process** graphic, performance management is at the heart of FDOT's planning and programming process.

Florida Department of Transportation

2015 Performance Report

Highlights

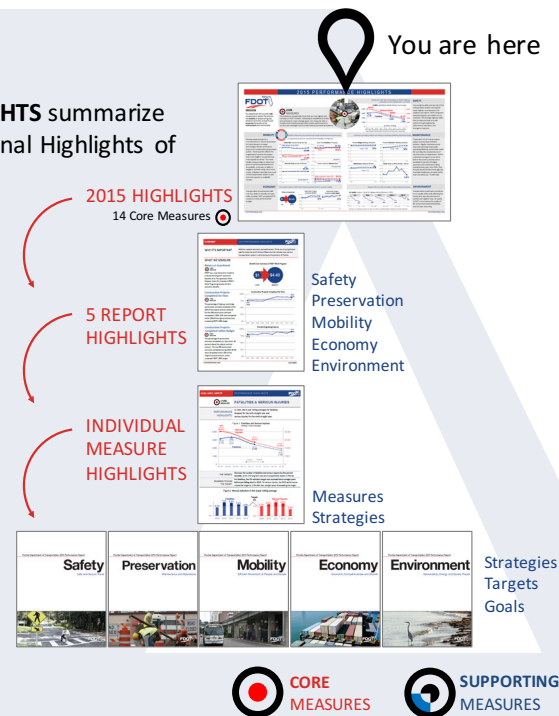
FDOTPERFORMS.ORG

This **2015 PERFORMANCE HIGHLIGHTS** summarize the 5 Performance Reports. Additional Highlights of individual Core and Supporting Measures are also available at FDOTPERFORMS.ORG

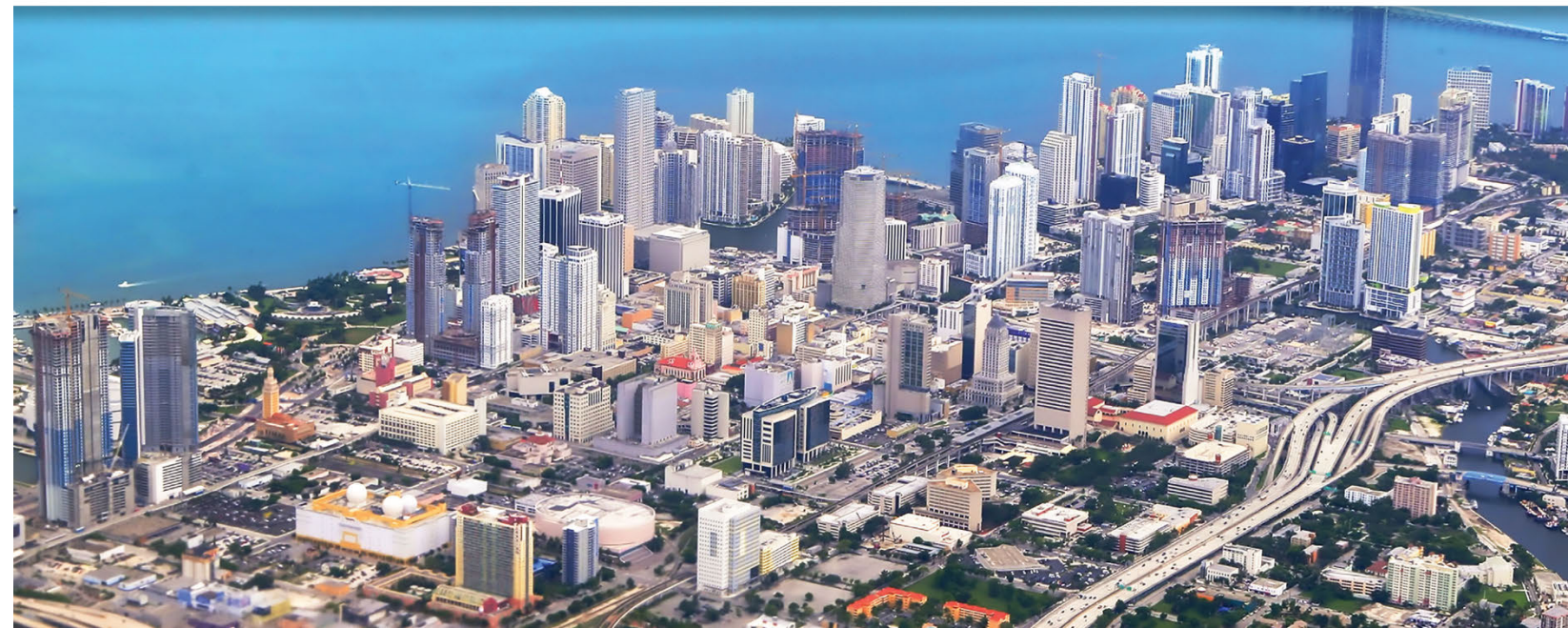
5 one page **REPORT HIGHLIGHTS** focus on a primary FDOT goal area.

One page **MEASURE HIGHLIGHTS** are prepared for each core measure and many supporting measures

5 **PERFORMANCE REPORTS** evaluate results in relation to FDOT's mission, plans and programs.



FDOTPERFORMS.ORG



2015 PERFORMANCE HIGHLIGHTS



MISSION

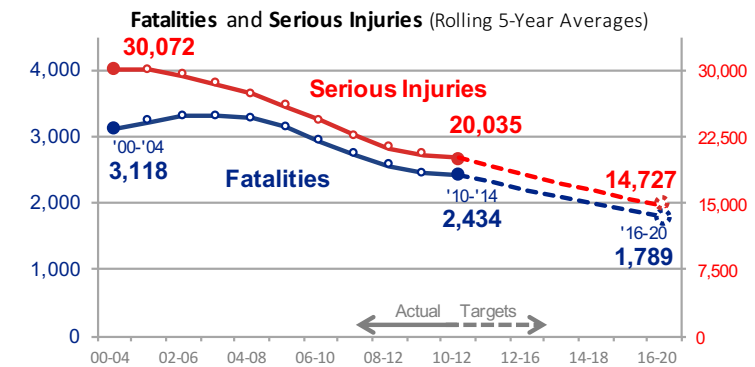
The department will provide a **safe** transportation system that ensures the **mobility** of people and goods, enhances **economic** prosperity and **preserves** the quality of our **environment** and communities

CORE MEASURES

Core Measures are those most aligned with carrying out FDOT's mission, priorities, and strategic goals. Core measures help communicate transportation system performance in a succinct yet meaningful way to a wide audience.



Fatalities, serious injuries and crash rates are decreasing on Florida's highways, protecting our most valuable asset – our people.

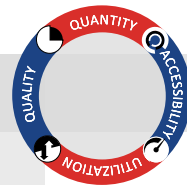


Since 2007, the five-year rolling averages for fatalities and serious injuries have dropped substantially by 26 percent and 29 percent, respectively.

SAFETY

Improving the safety and security of the transportation system is among the state's highest commitments. FDOT's long-term aspirational goal is zero deaths on our roadways. The Strategic Highway Safety Plan provides the basis of a safer system through engineering, enforcement, education, and emergency response.

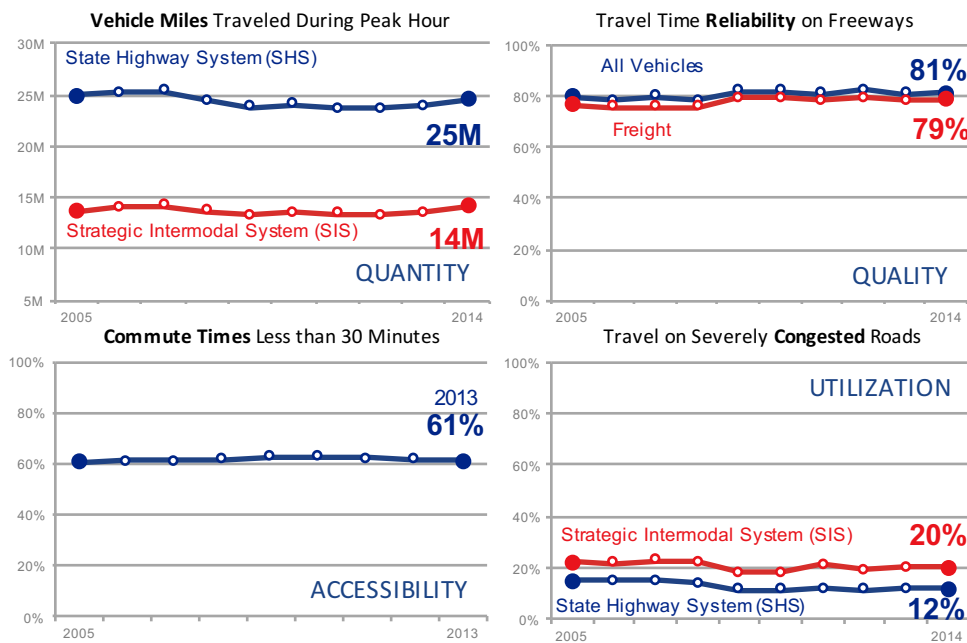
MOBILITY



Mobility is measured in four dimensions for people and goods across every mode.

23 Supplemental measures communicate the 4 Mobility Core Measures

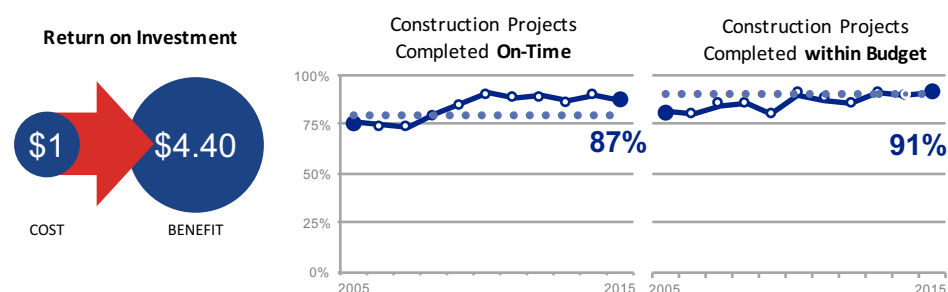
Moving people and goods is transportation's essential purpose. As travel demand increases and changes, Florida continues to improve our multimodal transportation system. Travel Quantity reflects the magnitude of travel on the system; how much freight is moved and how many people are served. The travel Quality measure helps to assess how good or bad the travel experience is. Accessibility is the ease or ability to engage in activities using one or more modes. Utilization describes how much of the transportation system is used and what capacity or availability remains.



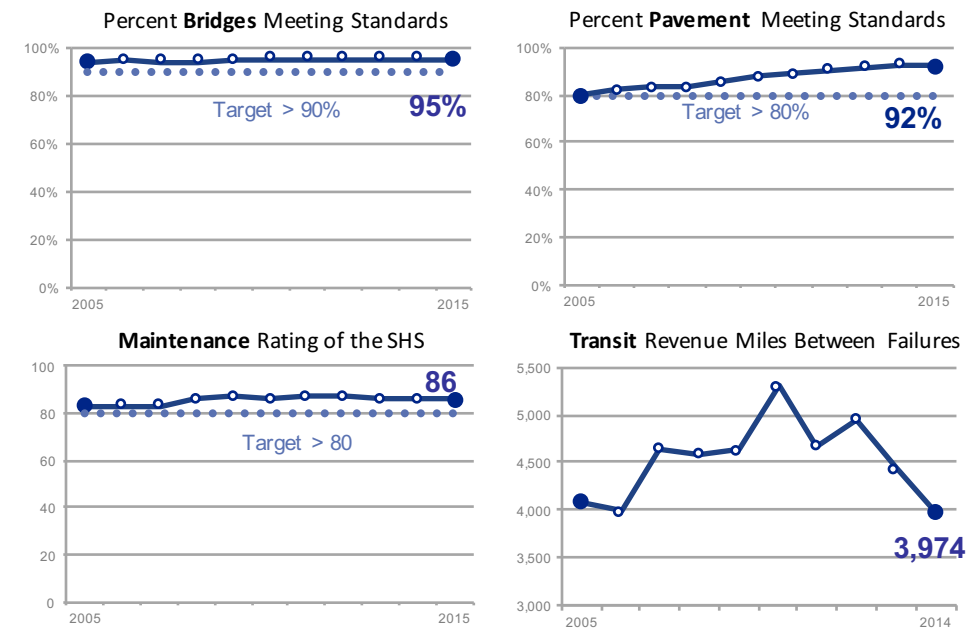
ECONOMY

Every dollar invested in FDOT's Work Program generates \$4.40 in economic benefits.

Transportation improvements yield over four dollars in benefits for every dollar invested. FDOT completed 87% of its projects on-time and 91% within budget.



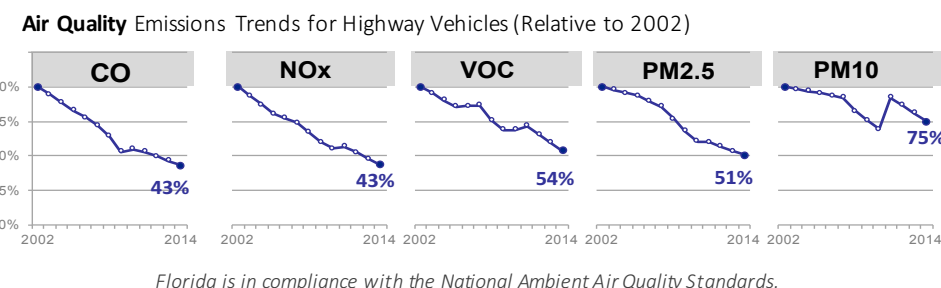
Pavement, bridge and maintenance are meeting or exceeding established performance targets.



PRESERVATION

Preservation of our transportation system is at the heart of FDOT's business. Regular maintenance and improvements keep these assets operating efficiently, extending their useful life and delaying the substantial cost of reconstruction or replacement. FDOT's maintenance program is one of the best in the country, and has met or exceeded its percent of bridges, pavement and maintenance rating standards every year since 1994. Over the past decade Florida transit agencies have kept breakdowns at a level better than one vehicle per 4,000 miles.

Between 2002 and 2014, air quality in Florida continued to improve.



Florida is in compliance with the National Ambient Air Quality Standards.

ENVIRONMENT

Air quality is FDOT's core measure for the environment, and has been improving. Transportation investments contribute to our quality of life while affecting the human and natural environment in positive ways.