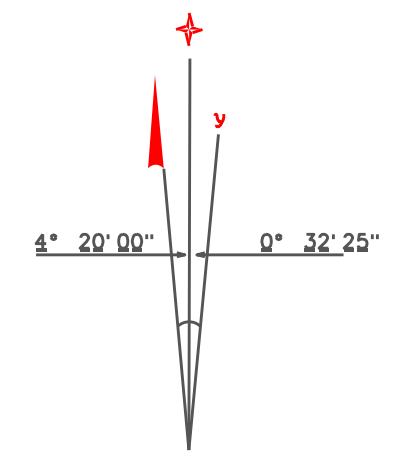
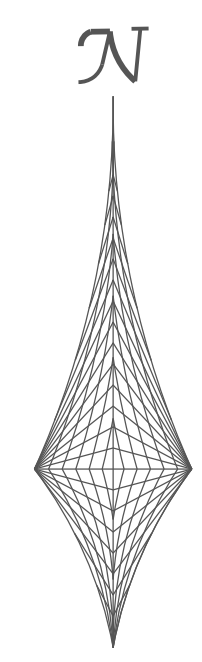
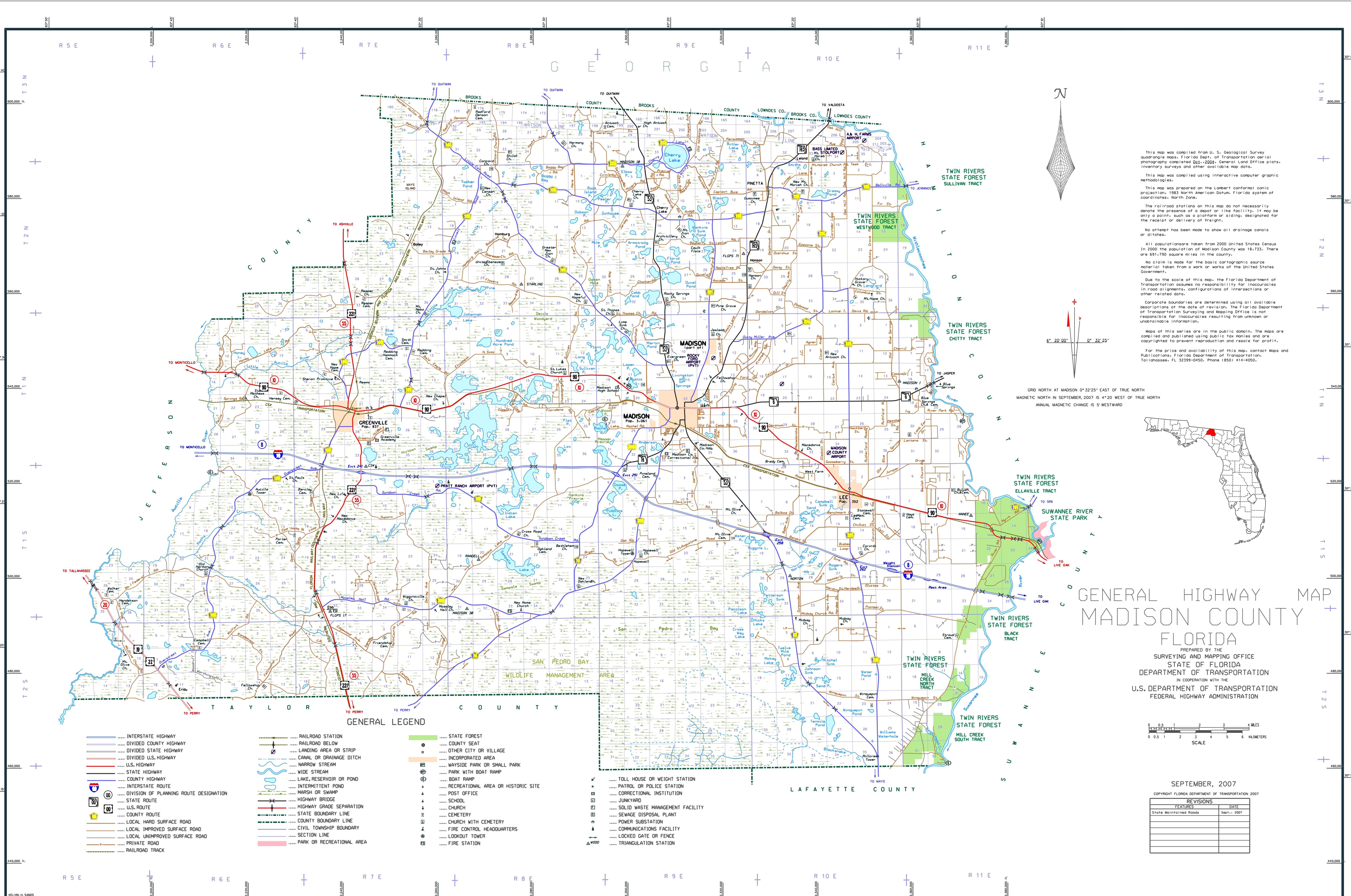
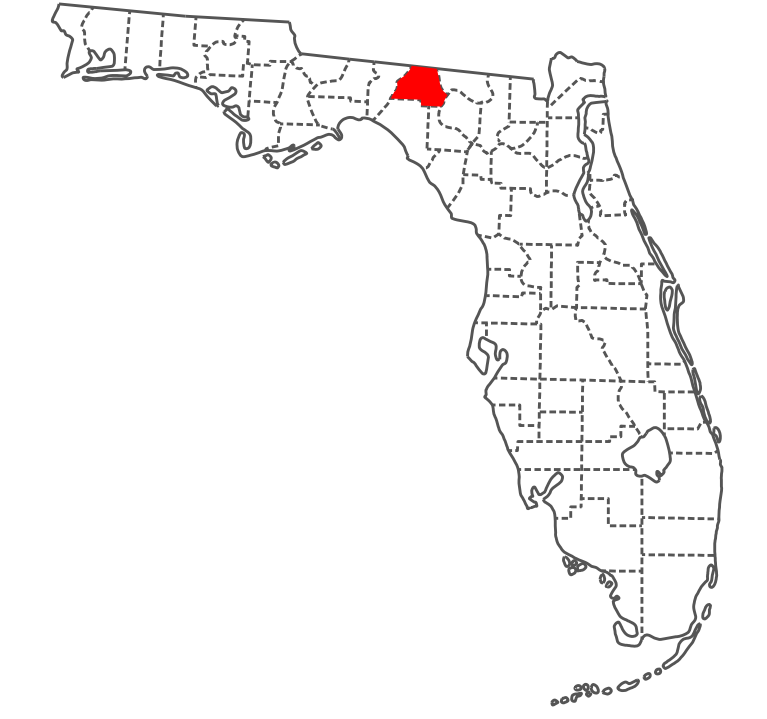


GEORGIA



GRID NORTH AT MADISON 0°32'25" EAST OF TRUE NORTH
 MAGNETIC NORTH IN SEPTEMBER, 2007 IS 4°20' WEST OF TRUE NORTH
 ANNUAL MAGNETIC CHANGE IS 5' WESTWARD



This map was compiled from U. S. Geological Survey quadrangle maps, Florida Dept. of Transportation aerial photography completed 02-2005, General Land Office plats, inventory surveys and other available map data.

This map was compiled using interactive computer graphic methodologies.

This map was prepared on the Lambert conformal conic projection, 1983 North American Datum, Florida system of coordinates, North Zone.

The railroad stations on this map do not necessarily denote the presence of a depot or line facility; it may be only a point, such as a platform or siding, designated for the receipt or delivery of freight.

No attempt has been made to show all drainage canals or ditches.

All population data taken from 2000 United States Census in 2000 the population of Madison County was 18,731. There are 691,790 square miles in the county.

No claim is made for the basic cartographic source material taken from a work or works of the United States Government.

Due to the scale of this map, the Florida Department of Transportation assumes no responsibility for inaccuracies in road alignments, configurations of intersections or other related data.

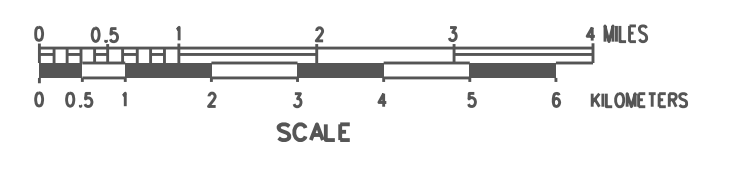
Corporate boundaries are determined using all available descriptions of the date of revision. The Florida Department of Transportation Surveying and Mapping Office is not responsible for inaccuracies resulting from unknown or undetectable information.

Maps of this series are in the public domain. The maps are compiled and published using public tax records and are copyrighted to prevent reproduction and resale for profit.

For the price and availability of this map, contact Maps and Publications, Florida Department of Transportation, Tallahassee, FL 32399-0450, Phone (850) 414-0550.

GENERAL HIGHWAY MAP MADISON COUNTY FLORIDA

PREPARED BY THE
 SURVEYING AND MAPPING OFFICE
 STATE OF FLORIDA
 DEPARTMENT OF TRANSPORTATION
 IN COOPERATION WITH THE
 U.S. DEPARTMENT OF TRANSPORTATION
 FEDERAL HIGHWAY ADMINISTRATION



SEPTEMBER, 2007

COPYRIGHT FLORIDA DEPARTMENT OF TRANSPORTATION 2007

REVISIONS	
FEATURES	DATE
State Maintained Roads	Sept., 2007

- ### GENERAL LEGEND
- INTERSTATE HIGHWAY
 - DIVIDED COUNTY HIGHWAY
 - DIVIDED STATE HIGHWAY
 - DIVIDED U.S. HIGHWAY
 - U.S. HIGHWAY
 - STATE HIGHWAY
 - COUNTY HIGHWAY
 - INTERSTATE ROUTE
 - DIVISION OF PLANNING ROUTE DESIGNATION
 - STATE ROUTE
 - U.S. ROUTE
 - COUNTY ROUTE
 - LOCAL HARD SURFACE ROAD
 - LOCAL IMPROVED SURFACE ROAD
 - LOCAL UNIMPROVED SURFACE ROAD
 - PRIVATE ROAD
 - RAILROAD TRACK
 - RAILROAD STATION
 - RAILROAD BELOW
 - LANDING AREA OR STRIP
 - CANAL OR DRAINAGE DITCH
 - NARROW STREAM
 - WIDE STREAM
 - LAKE, RESERVOIR OR POND
 - INTERMITTENT POND
 - MARSH OR SWAMP
 - HIGHWAY BRIDGE
 - HIGHWAY GRADE SEPARATION
 - STATE BOUNDARY LINE
 - COUNTY BOUNDARY LINE
 - SECTION LINE
 - PARK OR RECREATIONAL AREA
 - STATE FOREST
 - COUNTY SEAT
 - OTHER CITY OR VILLAGE
 - INCORPORATED AREA
 - WAYSIDE PARK OR SMALL PARK
 - PARK WITH BOAT RAMP
 - BOAT RAMP
 - RECREATIONAL AREA OR HISTORIC SITE
 - POST OFFICE
 - SCHOOL
 - CHURCH
 - CEMETERY
 - CHURCH WITH CEMETERY
 - FIRE CONTROL HEADQUARTERS
 - LOOKOUT TOWER
 - FIRE STATION
 - TOLL HOUSE OR WEIGHT STATION
 - PATROL OR POLICE STATION
 - CORRECTIONAL INSTITUTION
 - JUNKYARD
 - SOLID WASTE MANAGEMENT FACILITY
 - SEWAGE DISPOSAL PLANT
 - POWER SUBSTATION
 - COMMUNICATIONS FACILITY
 - LOCKED GATE OR FENCE
 - TRIANGULATION STATION