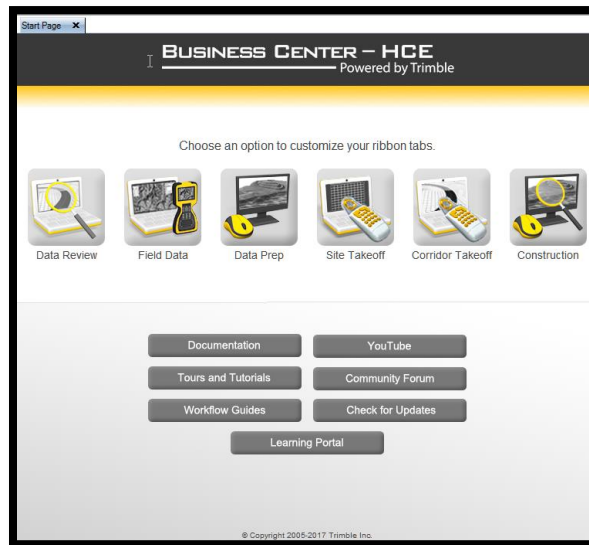


This file provides information about the Trimble Start page.

Trimble has a standard Start page that resembles the figure below:



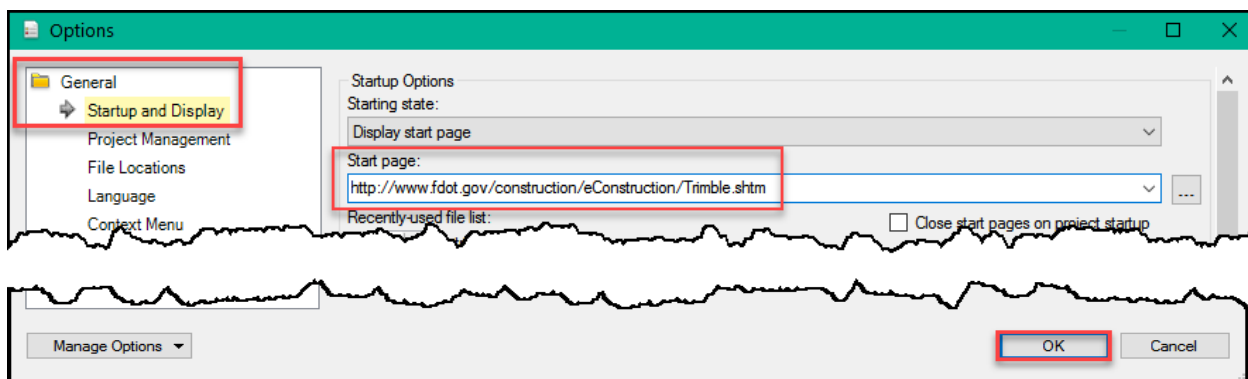
It is recommended to change the Start page to the [FDOT Trimble Resource page](http://www.fdot.gov/construction/eConstruction/Trimble.shtm), so you can see up to date information posted by FDOT each time you use Trimble.

NOTE: This step is optional and only needs to be done with the first load of each download/update.

1. Select Project, then Options.



2. Under General, Startup and Display, Start page, enter <http://www.fdot.gov/construction/eConstruction/Trimble.shtm>, then select OK.



For additional information, use the FDOT Trimble Handbook.